

ENERGY INDUSTRY

PERSONAL PROTECTIVE EQUIPMENT & SITE SAFETY

JSP design and manufacture high quality personal protective equipment (PPE) and site safety products, providing innovative solutions for the energy industry. The range includes helmets, ear defenders, eye protection, respirators, and personal fall protection, offering versatile solutions for working safely at ground level and at height, with barriers, cones, and spill products to help prevent and respond to accidents on site. JSP products offer compatible and user-friendly protection for use in petrochemical, oil and gas, and renewable energy sectors. See the full energy industry range on the next page.



www.jspsafety.com
sales@jspsafety.com
+44 (0)1993 826050



EVO® VISTAshield®

EVO® VISTAshield® is a next generation safety helmet incorporating a fully retractable optical class 1 integrated faceshield offering A-rated impact protection.

Conforms to EN397 / EN166 / EN170 / EN50365



More colours available, please contact for more details.

AMC170-004-F00 EVO® VISTAshield® - vented, white/smoke Qty 10

EVO® VISTAlens®

EVO® VISTAlens® is a next generation safety helmet incorporating a fully retractable optical class 1 integrated overspec offering B-rated impact protection.

Conforms to EN397 / EN166 / EN170 / EN50365



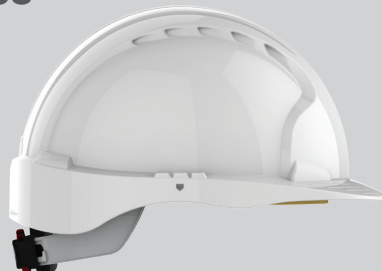
More colours available, please contact for more details.

AMB170-007-F00 EVO® VISTAlens® - vented, blue/smoke Qty 10

EVO®5 OLYMPUS®

EVO®5 Olympus® industrial safety helmet passes all relevant international standards. Fitted with Revolution® wheel ratchet and 3D-adjustment™ harness.

Conforms to EN397 / EN50365 / ANSI Z89.1 / AS/NZS1801



More colours available, please contact for more details.

AKE170-000-100 EVO®5 - non-vented, white Qty 10

EVOLite®

Weighing less than 300g, the EVOLite® is the lightest safety helmet for sale in Europe. Fitted with Revolution® wheel ratchet and 3D-adjustment™ harness.

Conforms to EN397 / EN50365



More colours available, please contact for more details.

AJA170-000-100 EVOLite® - non-vented, white Qty 10

EVO®3

The EVO®3 helmet combines a super strong shell for superior all day protection with the comfort benefits of the 3D Adjustment™ harness and Revolution® wheel ratchet.

Conforms to EN397 / EN50365



More colours available, please contact for more details.

AJE170-000-200 EVO®3 - non-vented, yellow Qty 10

EVO® 6100 FULL BRIM

The EVO®6100 Full Brim safety helmet combines a super strong full brim HDPE shell with the comfort benefits of the 3D-Adjustment™ harness system and Revolution® wheel ratchet.

Conforms to EN397 / EN50365 / ANSI Z89.1 / AS/NZS1801



AJP170-000-100 EVO® 6100 Full Brim - non-vented, white Qty 10

www.jspsafety.com
sales@jspsafety.com
+44 (0)1993 826050



DUALSWITCH™ WORK AT HEIGHT OR ON THE GROUND

JSP's DualSwitch™ technology is fully certified to both EN397 and EN12492, with the ability to change between the two standards easily at the flick of a switch. The innovative system is available with EVO®5 and EVO® Vista® range helmets, for use at ground level (EN397) or at height (EN12492) without the need to change the harness.

WORKING ON THE GROUND



SWITCH UP

WORKING AT HEIGHT



SWITCH DOWN



EVO® VISTAshield® DUALSWITCH™

EVO® VISTAshield® DUALSWITCH™ combines the new EVO® VISTA® retractable eyewear helmet technology with the innovative DUALSWITCH™ chin strap harness system. The faceshield offers A-rated impact protection - tested with 6mm steel ball bearing at speeds of up to 425mph (685kph).

EVO® VISTAshield® is specifically designed to maximise compatibility with JSP respirators, such as the Force™8 PressToCheck™ and the Sonis® helmet mounted ear defender range.

Conforms to EN397 / EN12492 / EN50365 / EN166 / EN170



More colours available, please contact for more details.

AMH270-409-H00 EVO® VISTAshield® Dualswitch™ - vented, yellow/smoke, silver CR2 Qty 10

SONIS®1 HELMET MOUNTED EAR DEFENDERS

Sonis®1 Helmet Mounted Ear Defenders 26dB SNR can be used for the following activities but not limited to moderate industrial noise, workshops, landscaping, leisure activities.

Conforms to EN352-3



AEB010-0CY-800 Sonis®1 Qty 10

SONIS®C HELMET MOUNTED EAR DEFENDERS

Sonis®C Helmet Mounted Ear Defenders 31dB SNR can be used for the following activities but not limited to substantial industrial noise, construction & agricultural machinery, road works, engineering.

Conforms to EN352-3



AEB030-0CY-000 Sonis®C Qty 10

InterGP™ HELMET MOUNTED EAR DEFENDERS

The InterGP™ helmet mounted ear defenders are designed for general purpose use, providing an SNR of 24dB when fitted to EVO®3 and 25dB when fitted to EVOLite®.

Conforms to EN352-3

Not compatible with EVO® VISTA®



AEK010-005-300 InterGP™ Qty 10



www.jspsafety.com
sales@jspsafety.com
+44 (0)1993 826050

FORCE™ 10 TYPHOON™

The Force™ 10 Typhoon™ is an extremely lightweight, easy to maintain full face mask with panoramic visor. With 3 available sizes (S,M,L) and the ability to fit PressToCheck™ filters, the user can feel reassured of an excellent fit. Conforms to EN136



BPB003-104-000	Force™ 10 Typhoon™ - small	Qty 1
BPB003-004-000	Force™ 10 Typhoon™ - medium	Qty 1
BPB003-204-000	Force™ 10 Typhoon™ - large	Qty 1

PRESSTOCHECK™ FILTERS

Filters offering 'Daily Face Fit Check Reassurance'. PressToCheck™ is the easiest way to face-fit check the seal of your respirator, every time you put it on! Conforms to EN14387



BMN750-000-600	ABEK1 P3 filters	Set of 2
----------------	------------------	----------

FORCE™ 8

The Force™ 8 twin cartridge half mask with Typhoon™ valve offers superior low breathing resistance and a 4-point suspension harness. With 3 available sizes (S,M,L) and the ability to fit PressToCheck™ filters, the user can feel reassured of an excellent fit. Conforms to EN140



BHG003-1L5-000	Force™ 8 - small	Qty 1
BHT003-0L5-000	Force™ 8 - medium	Qty 1
BHG003-2L5-000	Force™ 8 - large	Qty 1

FORCE™ 8 WITH ABEK1 P3 CLASSIC FILTERS

The Force™ 8 twin cartridge half mask with classic multi gas / vapour and particulate filters. Cartridges feature low profile angle for minimum visual impairment and an integral maintenance-free disposable inhalation valve. Conforms to EN140 & EN14387



BHT523-0L5-800	Force™ 8 with ABEK1 P3 Classic Filters	
----------------	--	--

SPRINGFIT™

SpringFit™ fold flat disposable masks achieve an unrivalled secure fit with a unique endoskeleton structure. Also features Typhoon™ exhalation valve. Conforms to EN149



BGA122-202-000	421ML FFP2 - non-valved	Box of 10
BGA172-202-000	425ML FFP2 - valved	Box of 10

BGA182-206-000	435ML FFP3 - valved	Box of 10
BGA802-206-000	436ML FFP3 Odour - valved	Box of 10

F600 SERIES

Vertical fold flat disposable masks with foam padded adjustable nose clip and extended chin coverage. Conforms to EN149



BGV120-000-Q00	F621 FFP2 - non-valved	Qty 40
BGW170-000-S00	F622 FFP2 - valved	Qty 30

700 SERIES TYPHOON™ MOULDED

The range features the unique Typhoon™ Valve for extremely low breathing resistance, low heat, moisture and CO₂ build-up. Conforms to EN149



BEP120-001-A00	FFP2 - valved	Qty 10
BEP150-001-A00	FFP2 Odour - valved	Qty 10

www.jspsafety.com
sales@jspsafety.com
+44 (0)1993 826050

STEALTH™ 16g

The world's lightest safety eyewear, weighing just 16g. Ultra thin & strong optically perfect K-rated anti-scratch lenses. Conforms to EN166 / EN172



ASA920-163-000	Stealth™ 16g - smoke lens	Qty 10
----------------	---------------------------	--------

FORCEFLEX™ 3

The Forceflex™ 3 is the latest generation of high performance eyewear made with Forceflex™ technology, it is lighter and more flexible than previous models providing maximum comfort to the wearer and eliminating pressure points. Conforms to EN166 / EN170



ASA460-0A5-900	Forceflex™ 3 - clear lens, green/black frame	Qty 10
----------------	--	--------

EVOGUARD® C4-MAX INDUSTRIAL VISOR

Fully compatible with EVOGuard® browguard systems and *EVO® helmet models *Not including EVO®Vista® or EVO®6100 ranges. Conforms to EN166 / EN170



ADA270-070-000	EVOGuard® C4-MAX Industrial Visor	Qty 10
----------------	-----------------------------------	--------

EVO® DOUBLE LENS GOGGLE

Engineered to offer outstanding performance, compatibility, comfort and looks. Double lens for optimum anti fog protection. Anti-Mist and scratch resistant with UV protection. Conforms to EN166 / EN 170



AGM020-823-000	EVO® Double Lens Safety Goggles	Qty 10
----------------	---------------------------------	--------



STEALTH™ 8000

A lightweight safety spectacle, weighing just 26g, the wraparound 9 base curve polycarbonate lens has a built in adjustable PVC nose piece for added comfort and stability.. Conforms to EN166 / EN170



ASA790-151-300	Stealth™ 8000 - clear lens, clear/red frame	Qty 10
----------------	---	--------

COVERSIGHT™ CLEAR OVERSPECS

The Coversight™ is designed to fit perfectly over prescription glasses. They are lightweight, with adjustable temples and rotating soft tips, providing excellent protection in all environments without compromising on comfort. Conforms to EN166 / EN170



1SIG23C	Coversight™ Overspecs - clear lens	Qty 10
---------	------------------------------------	--------

EVO® SUREFIT™ CARRIER & 20CM POLYCARBONATE VISOR

Surefit™ visor carrier & 20cm polycarbonate visor to fit EVO® range of safety helmets. Compatible with Sonis® and InterGP™ / InterEX™ helmet mounted ear defenders. Conforms to EN166



ANK060-230-000	EVO® Surefit™ Carrier & Polycarbonate Visor	Qty 10
----------------	---	--------

COSMOS™ GOGGLE

The Cosmos™ Safety Goggle has a wide field of vision. Improved ergonomics, thanks to its bi-material injection, ensures optimum comfort and resistance to wear. Conforms to EN166



2COS23C	Cosmos™ Safety Goggles - clear lens	Qty 1
---------	-------------------------------------	-------

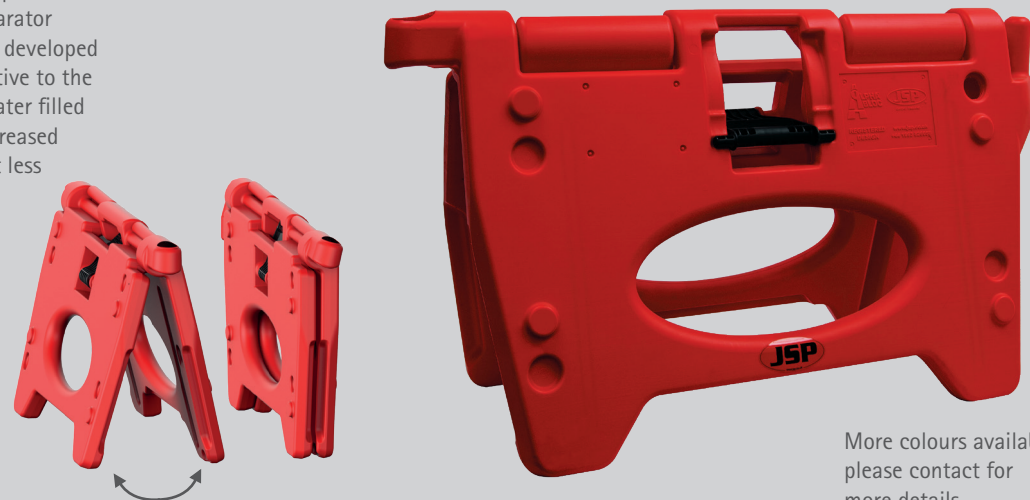


www.jspsafety.com
sales@jspsafety.com
+44 (0)1993 826050



ALPHABLOC® TRAFFIC SEPARATOR BARRIER

The uniquely foldable AlphaBloc® space saving traffic separator barrier system has been developed as a convenient alternative to the conventional style of water filled separators, allowing increased quantities on a pallet at less stacking height.



More colours available,
please contact for
more details.

KBV030-000-600 AlphaBloc® Traffic Separator Barrier

Pallet Qty 40

TITAN® 2M ROAD TRAFFIC BARRIER

The Titan® is the recognised and well established stacking barrier from JSP, it has all the usual advantages of standard stackable systems but in addition has many unique features. Titan® has undergone modifications to further improve longevity and to meet the proposed NRSWA changes effecting wind stability, set out in BS8442 when erected and assembled correctly.



More colours available,
please contact for
more details.

KBP073-000-600 Titan® 2m Traffic Barrier with Yellow Anti-Trip Black

Pallet Qty 40

www.jspsafety.com
sales@jspsafety.com
+44 (0)1993 826050



RIDGEBACK® 600 RAMP 5CM SPEED RAMP - 10MPH / 16KM/H

The Ridgeback® 600 joins the existing range of speed reducing products. The modular units provide a global solution by reducing traffic speed and increasing safety. These inner and end units have integrated reflective areas featuring the latest high performance technology conforming to EN 1436:2018 and durability requirements of EN 1824:2011.



HAA000-225-300	15kph/10mph Speed bump (single)		Qty 1
HAB001-225-300	15kph/10mph End cap (single)		Qty 1
HAH000-000-000	Pair of concrete application fixings		Qty 1
HAJ000-000-000	Pair of asphalt application fixings		Qty 1

DOMINATOR™ 75CM TRAFFIC CONE WITH TWIN SEALBRITE™ SLEEVE

The preferred traffic management and term maintenance two-piece moulded cone. Made with UV stabilised HDPE moulded top and heavy duty 100% recycled PVC base.



JBF060-840-600 Dominator™ 75cm with Twin Sleeve Qty 1

150 LITRE OIL SPILL KIT



PKQ230-010-000 150 Litre Oil Spill Kit Qty 1

90 LITRE CHEMICAL SPILL KIT



PKC110-010-000 90 Litre Chemical Spill Kit Qty 1

ABX10 ABSORBENT



PAM060-100-000 ABX10 Absorbent (30 Litre Bag) Qty 1

THE JSP RANGE OF PRODUCTS FOR WORKING AT HEIGHT

A range of products for complete fall arrest protection. K2™ harness and lanyard provide premium comfort and high performance, with helmet and tool lanyards available for safe and convenient work at height.

JSP is one of the UK's most highly specialised vendors of products and courses for working at height. We constantly strive to provide professional solutions for our customers within fall prevention, evacuation and rescue at height.

CONTACT US FOR MORE INFORMATION



K2™ 2-POINT HARNESS

Premium harness designed for intensive use, providing a comfortable and effective solution with the highest standards of safety and ergonomics.

K2™ 2-point harness features ultra-lightweight air mesh material with 5 points of adjustment and lanyard keepers. Conforms to EN361



FAR0401

K2™ 2-point harness

K2™ 2m TWIN FAL

Twin tail fall arrest lanyard complete with quarter turn aluminium karabiner, 2 aluminium scaffold hooks and internal energy absorber.

Relaxed length: 1.4m
Extended length: 2m

Lanyard: EN355, EN354 & CNB/P/11.063
Karabiner: EN362 Class B
Scaffold Hook: EN362 Class A/T



FAR0405

K2™ 2m twin FAL

HELMET LANYARD

High visibility red elastic lanyard helps to prevent hard hats from falling when working from height. Attaches easily and securely to equipment.



FAR0512

Helmet lanyard

WRIST TOOL LANYARD

Band for secure attachment to wrist or harness to prevent accidental dropping of tools with durable and comfortable fabric and a pull-cord blocker. Capacity 2kg.



FAR0501

Wrist tool lanyard

TWIN TOOL LANYARD

Stretch twin lanyard made with high visibility 16mm tubular webbing. Complete with lightweight connector for attachment to user's belt, the tool lanyard is convenient for holding multiple tools safely.



FAR0503

Twin tool lanyard



JSP LTD Worsham Mill, Minster Lovell, Oxford, OX29 0TA, England
Tel: +44 (0)1993 826050 Fax: +44 (0)1993 824411
sales@jspsafety.com export@jspsafety.com www.jspsafety.com
Issued: 07/21 Copyright © 2021. JSP Ltd. All Rights Reserved
All weights and measures are approximate.



www.jspsafety.com

sales@jspsafety.com

UK tel: +44 (0)1993 826050

GENERAL DISCLAIMER

It is the responsibility of Employers and Individuals to carry out proper risk assessment by qualified Health and Safety personnel of any hazardous situation or activity. The Seller shall not be held liable for any loss, damage or injury sustained where no risk assessment has been carried out.

DATA

Product images, dimensions and descriptions are statements of opinion, provided for information only and form no part of the contract. Reasonable changes to designs and materials may be made without notice by the Seller without affecting the validity of the contract. All measurements

are approximate. All information in this publication has been checked for accuracy. However, the Seller cannot accept any liability for errors or omissions. The Seller reserves the right to alter specifications or to withdraw products from range without prior notice. No reproductions of any part of this catalogue may be made without the Seller's consent.