

**World Leader in Sophisticated Packaging Systems****RQ** Random Quad Drive**series overview**

The BestPack® RQ Series Semi-Automatic Random Tape Carton Sealers are built for speed and rugged dependability. The 4 belt carton sealer system is a solution for heavy-duty applications. This heavy duty workhorse is ideal for those rugged and random sealing applications

All systems incorporate our exclusive pop out pressure sensitive "High Speed" tape heads with patented tab adjustment available in both 2" or 3". All our machines are also available in stainless steel.

**major features**

- *Handles Random Carton Sizes*
- *Adjustable Bed Height from 20.25" to 30.75" for the RQ22 and 23.85" to 30.75" for the RQ33 and RQ44*
- *4 Belts - 2 top and 2 side*
- *Extra 4" Carton Height Adjustment Available on Upper Assembly*
- *Height Sensors*
- *Tape Roll Lengths: 1000 yd, 1500 yd, 2000 yd.*
- *Heavy Duty Frame*
- *UL Approved Electrical Parts*
- *Rugged Construction*
- *Capable of Interchanging 2" or 3" Tape Heads*
- *Electrical on/off box can be mounted on either side of machine*

**standard features**

- *Exclusive Pop-out pressure sensitive "high speed" tape head with patented tab adjustment and noise reduction arm*
- *Maintenance Free, Oil-less Air Cylinders*
- *Operation Manual*

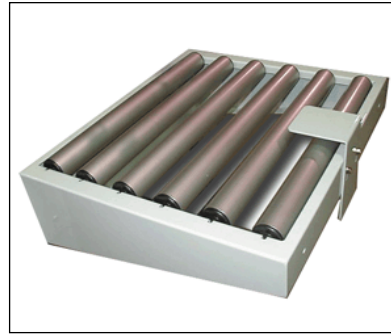
**World Leader in Sophisticated Packaging Systems**

**optional features**

- Spare Parts Kit
- High Speed Motor Upgrade (Up to 125 ft./mm.)
- Interlock Safety Gates
- Infeed/Exit Conveyor
- Low or No Tape Sensor
- Stainless Steel
- Random Side Compression Rollers



**Locking Castors**



**Infeed/Exit Conveyor w/ Stabilizer**

**machine & carton specifications**

- Power Requirements: 110 Volts 60 Hz
- Air Requirements: 90-100 psi, 6-8 cfm
- Speed: Up to 25 cartons/minute
- Tape Head: Standard: 2"; Available: 3"

**series comparison table**

Model	Machine Dimensions	Carton Range	Cartons/Min.	Shipping Weight (lbs.)
RQ 22-2	(42.8") x (34.6") x (57.5")	(6.0" min) x (7.5" - 21") x (4.5" - 20.5")	Up to 25	434
RQ 22-3	(42.8") x (34.6") x (57.5")	(6.0" min) x (7.5" - 21") x (4.5" - 20.5")	Up to 25	434
RQ 23-2	(42.8") x (34.6") x (76.0")	(6.0" min) x (7.5" - 21") x (4.5" - 30.0")	Up to 20	476
RQ 23-3	(42.8") x (34.6") x (57.5")	(6.0" min) x (7.5" - 21") x (4.5" - 30.0")	Up to 20	476
RQ EC 33-3-CP**	(46.3") x (45.0") x (76.0")	(6.0" min) x (7.5" - 30.0") x (6.0" - 30.0")	Up to 15	612
RQ 33-3-CP**	(46.3") x (45.0") x (76.0")	(6.0" min) x (7.5" - 30.0") x (6.0" - 30.0")	Up to 15	612
RQ 44-3**	(46.3") x (54.7") x (86.0")	(6.0" min) x (7.5" - 40.0") x (6.0" - 40.0")	Up to 12	704

\*All specifications subject to change without notice  
All specifications capable of customization

\*\* Includes interlock gates and random side compression rollers