

**World Leader in Sophisticated Packaging Systems****MSD-WA** Manual Side Drive Water Activated**series overview**

The BestPack® MSD22-3WA Series are water-activated (gummed tape), operator fed, adjustable carton-sealing machines designed to cater to the needs of general and heavy duty uniform closure applications.

This machine comes with a pop-out tape head. The two side belts are driven by two electric 110V UL-approved motors. These units are also available in Stainless Steel.

**major features**

- **3" water-activated pop-out tape heads**
- **Two Side Belts**
- **Telescopic Mast Design**
- **Adjustable Bed Height 25.5" to 30.00"**
- **Width/Height Adjustment either side of machine**
- **Heavy Duty Frame**
- **UL Approved Electrical Parts**
- **Designed for uniform applications**

**standard features**

- **Exclusive Pop-out Water Activated Tapehead**
- **Operation Manual and Spare Parts Kit**
- **Top Carton Compression Unit**
- **3" Tapehead**

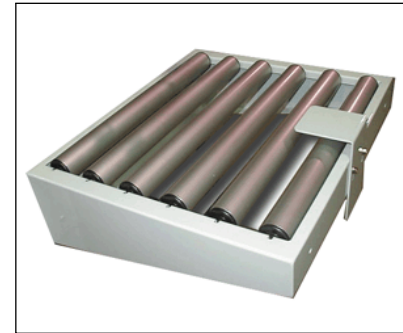
**World Leader in Sophisticated Packaging Systems**

**optional features**

- *Motorized Height and/or Width Adjustment*
- *Interlock Safety Gates*
- *Stainless Steel*



**Locking Castors**



**Infeed/Exit Conveyor w/ Stabilizer**

**machine & carton specifications**

- *Power Requirements: 110 Volts 60 Hz*
- *Speed: Up to 5-10 cartons/minute*
- *Tape Head: Standard: 3"*
- *Requires Dry Air*

**series comparison table**

Model	Machine Size	Carton Range	Cartons/Min.	Shipping Weight (lbs.)
MSD 22-3WA	(56.7") x (35.0") x (79.4")	(7.9" - unlimited) x (5.1" - 20.8") x (7.0" - 20.5")	5-10	528 (machine) 75 (pallet) 40 (tri-wall)
MSDL 22-3WA	(67.1") x (35.0") x (79.4")	(7.9" - unlimited) x (5.0" - 20.5") x (4.0" - 20.5")	5-10	600 (machine) 90 (pallet) 50 (tri-wall)

\* All specifications capable of customization

\*\*With skid plates