

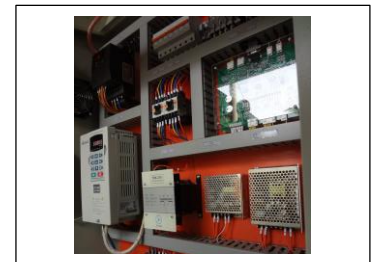


EU NIAN PRECISION TECHNOLOGY SDN. BHD. (629410-X)

友聯精準科技有限公司

No. 23, Jalan Ros Merah 2/7, Taman Johor Jaya, 81100 Johor Bahru, Johor, Malaysia.

Tel : +60-7-3538933, 3538533 Fax : +60-7-3539533 E-mail : admin@eunian.com



EUNIAN TRX-310 Rotary Clipper

Specification

Machine	9ft Rotary Clipper
Model	TRX-310-W09B2V□-K□C□-S□ (Please refer to Model Explanation)
Clipping Width (min)	4ft (1270mm)
Clipping Width (max)	9ft (2790mm)
Clipping Length (min)	3ft (915mm)
Clipping Length (max)	50ft (15,240mm)
Clipping Speed (nominal)	80m/min
Clipping Speed (max)	120m/min
Clipping Speed (Normal Range)	0 to 80m/min
Clipping Accuracy	±2mm (0 to 60m/min) , ±3mm (>60m/min)
No. of Blade	2
Manual Clipping	YES
Manual Clipping Length (min)	200mm at 50m/min
Blade Dimension	2860mm (L), 20mm (W), 1.2mm (T)
Input Conveyor Speed (max)	120m/min
Input Conveyor Motor	5HP AC Induction Motor, 3-Phase (380/415/440VAC), 1450rpm
Input Conveyor Motor Driver	DELTA 5HP, 460VAC Class Inverter



EU NIAN PRECISION TECHNOLOGY SDN. BHD. (629410-X)

友聯精準科技有限公司

No. 23, Jalan Ros Merah 2/7, Taman Johor Jaya, 81100 Johor Bahru, Johor, Malaysia.

Tel : +60-7-3538933, 3538533 Fax : +60-7-3539533 E-mail : admin@eunian.com

Clipping Motor	7.5HP Vector Induction Motor, 3-Phase (380/415/440VAC), 1450rpm with Rotary Encoder 1024ppr
Clipping Motor Driver	DELTA 7.5HP, 460VAC Class Vector Inverter with PG Card and Braking Resistor
Clipping Length Encoder	OMRON E6B2-CWZ6C, 360ppr Rotary Encoder
Clipping "Zeroing" Sensor	FOTEK PM18-05N-S, Cylindrical DC 3-Wire NPN Proximity Sensor
Main Control Unit	TRX-3101 u-Controller and Central Processing Card
Operation Interface	HITECH HMI, 5.7" STN LCD Touch Screen
Total Machine Power	5.9kW
Machine Dimension	3680mm (L) x 1800mm (W) x 1260mm (H)
Control Panel Dimension	850mm (L) x 380mm (W) x 1020mm (H)
Machine Weight	1,500kg

Model Explanation

TRX310 - W09 B2 V38 - K30 C30 - S0

