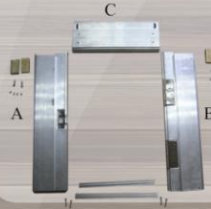


## Procedures To Assemble Door Frame

### STEP 1

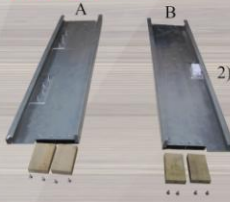
Remove all parts/accessories from the box comprising of:-

- i) 3 pieces of Aluminium Door Frames.
- ii) 4 pieces of Wooden Support Panels.
- iii) 2 pieces of Temporary Spreader Bars.
- iv) Screws.



### STEP 2

- 1) Slot in the four pieces of Wooden Support Panels into the slot holes of the two side Door Frames (A & B).



- 2) The Wooden Support Panels will act as supports when fastening the top Door Frames "C" to Door Frames "A" and "B" with screws as in Step 4.

Door Frame will look like this after step 4.



### STEP 5

### STEP 3

Fasten the four pieces of Wooden Support Panels with screws against the holes provided in the Door Frame "A" and "B" so that the Wooden Support Panels won't fall inside.



### STEP 6

Affix (temporary) SPREADER BARS to the Door Frames "A" and "B" and fasten with the screws provided.

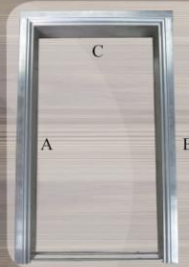


### STEP 4

- 1) Place Door Frame "C" on top of the Door Frames "A" and "B" where the Wooden Support Panels had already been mounted.



- 2) Fasten screws through the holes provided in the Door Frames "C" against the Wooden Support Panels in Door Frames "A" and "B".



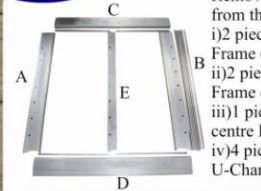
### STEP 7

Completed Door Frame will look like this.

## Procedures To Assemble Window Frame

### STEP 1

Remove all parts/accessories from the box comprising of:-  
 i) 2 pieces of Aluminium Main Frame (Top & Bottom).  
 ii) 2 pieces of Aluminium Side Frame (Right & Left).  
 iii) 1 piece of Aluminium centre Frame.  
 iv) 4 pieces 12mm Aluminium U-Channel



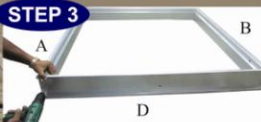
- v) 7 pieces Aluminium Round Pipe.
- vi) 20 pieces Screw.
- vii) 14 pieces clip.

### STEP 2

- 1) Mount Top Main Frame "C" on top of the two side Frames "A" & "B".
- 2) Fasten two screws each through the holes provided in the Main Frame "C" against the right and left Side Frames "A" & "B" respectively.

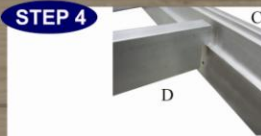


### STEP 3



Place Bottom Main Frame "D" below the two Side Frames "A" & "B" and fasten the 4 screws as mentioned in Step 2 above.

### STEP 4



Mount Centre Frame at centre of Top Main Frame "C" and bottom Main Frame "D".

### STEP 5



Fasten 2 screws each at top and bottom of Main Frame "C" & "D" against the screw holes provided.

### STEP 6



Mount 2 pieces of U-Channel each on the top and bottom Main Frame to the right and left of the Centre Frame and fasten the eight screws provided against the top and bottom Main Frames.

### STEP 7



Slot in the 7 pieces of Round Pipe through the holes in the right Side Frame through the Centre Frame and left Side Frame.

### STEP 8



- 1) Place the metal clips against the holes at the right and left end of the Round Pipes.
- 2) The clips are to prevent the Round Pipes from falling off through the Frames.

### STEP 9



Completed Window Frame.