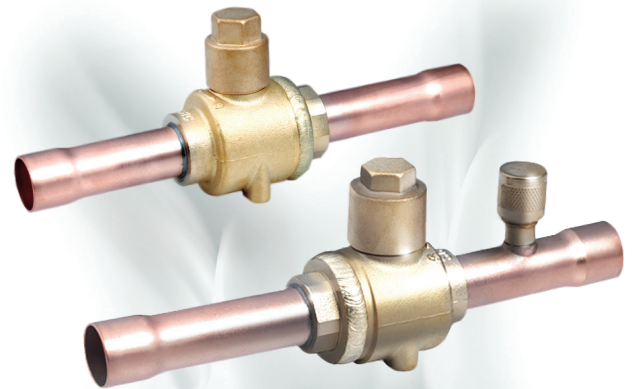




## Ball Valve

The ball valve of series SBV is applicable for commercial air conditioner, freezing or deep-freezing equipment or other refrigeration circuits in order to open and to shut off inner flow path by operating the valve stem. It can also be used as service valve for vacuum pumping and refrigerant injection etc.



### FEATURES

- STRAIGHTWAY TYPE, FULL PORT, LOW PRESSURE DROP , COST-EFFECTIVE
- VALVE BODY AND VALVE SEAT WITH WELDED STRUCTURE, WITH HIGH PRODUCT RELIABILITY
- ROTATE 1/4 CIRCLES FROM FULL-OPEN TO FULL-CLOSE, EASY TO OPERATE
- BIDIRECTIONAL FLOW
- ROTATION STOP ON REQUEST FOR FULL-OPEN AND FULL-CLOSE OF THE VALVE
- SPECIAL SEALING MATERIALS TO PREVENT INTERNAL LEAKAGE

### GENERAL SPECIFICATIONS

- Applicable for all common HCFC and HFC refrigerants such as: R22, R134a, R404A, R407C, R410A, R507A ...
- Medium temperature TS min./max.: -40°C / +120°C
- Max. operating pressure PS: 4,5 MPa (45 bar)
- Installation position: liquid, suction and discharge line in all directions
- Certifications: UL/CSA and PED declaration





# SANHUA SBV SERIES Ball Valve

## GENERAL CHARACTERISTICS

Without Access Fitting		Connections Ø d ODF		Kv	Wrench Size Cap	PED category	With Access Fitting	
Model	Part Number	[inch]	[mm]	[m³/h]	[mm]		Model	Part Number
SBV(M)-A2YHSY-2-S	SBV-13001	-	6	1,9	14	3.3	SBV(M)-JA2YHSY-2-S	SBV-13019
SBV(M)-A2YHSY-1-S	SBV-13002	1/4	-	1,9	14	3.3	SBV(M)-JA2YHSY-1-S	SBV-13020
SBV(M)-A3YHSY-2-S	SBV-13037	3/8	-	5,5	14	3.3	SBV(M)-JA3YHSY-2-S	SBV-13039
SBV(M)-A3YHSY-1-S	SBV-13003	-	10	5,5	14	3.3	SBV(M)-JA3YHSY-1-S	SBV-13021
SBV(M)-A4YHSY-2-S	SBV-13004	-	12	10,2	14	3.3	SBV(M)-JA4YHSY-2-S	SBV-13022
SBV(M)-A4YHSY-1-S	SBV-13005	1/2	-	10,2	14	3.3	SBV(M)-JA4YHSY-1-S	SBV-13023
SBV(M)-A5YHSY-2-S	SBV-13006	-	15	13,2	14	3.3	SBV(M)-JA5YHSY-2-S	SBV-13024
SBV(M)-A5YHSY-1-S	SBV-13007	5/8	16	13,8	14	3.3	SBV(M)-JA5YHSY-1-S	SBV-13025
SBV(M)-A6YHSY-2-S	SBV-13008	-	18	19,5	17	3.3	SBV(M)-JA6YHSY-2-S	SBV-13026
SBV(M)-A6YHSY-1-S	SBV-13009	3/4	-	19,5	17	3.3	SBV(M)-JA6YHSY-1-S	SBV-13027
SBV(M)-A7YHSY-1-S	SBV-13010	7/8	22	28,0	17	3.3	SBV(M)-JA7YHSY-1-S	SBV-13028
SBV(M)-A9YHSY-2-S	SBV-13011	-	28	51,5	17	3.3	SBV(M)-JA9YHSY-2-S	SBV-13029
SBV(M)-A9YHSY-1-S	SBV-13012	1 1/8	-	51,5	17	3.3	SBV(M)-JA9YHSY-1-S	SBV-13030
SBV(M)-A11YHSY-1-S	SBV-13013	1 3/8	35	80,0	17	I	SBV(M)-JA11YHSY-1-S	SBV-13031
SBV(M)-A13YHSY-2-S	SBV-13038	1 5/8	-	119,8	17	I	SBV(M)-JA13YHSY-2-S	SBV-13040
SBV(M)-A13YHSY-1-S	SBV-13014	-	42	119,8	17	I	SBV(M)-JA13YHSY-1-S	SBV-13032
SBV(M)-A17YHSY-1-S	SBV-13015	2 1/8	54	225	19	I	SBV(M)-JA17YHSY-1-S	SBV-13033
SBV(M)-A19YHSY-1-S	SBV-13016	-	64	225	19	I	SBV(M)-JA19YHSY-1-S	SBV-13034
SBV(M)-A21YHSY-2-S	SBV-13017	2 5/8	-	305	19	I	SBV(M)-JA21YHSY-2-S	SBV-13035
SBV(M)-A25YHSY-2-S	SBV-13018	3 1/8	80	635	24	I	SBV(M)-JA25YHSY-2-S	SBV-13036
SBV(M)-A29YHSY-1-S	SBV-13041	3 5/8	92	805	26	I	SBV(M)-JA29YHSY-1-S	SBV-13043
SBV(M)-A33YHSY-2-S	SBV-13046	4 1/8	105	950	32	I	SBV(M)-JA33YHSY-2-S	SBV-13045
SBV(M)-A34YHSY-1-S	SBV-13042	4 1/4	108	950	32	I	SBV(M)-JA34YHSY-1-S	SBV-13044

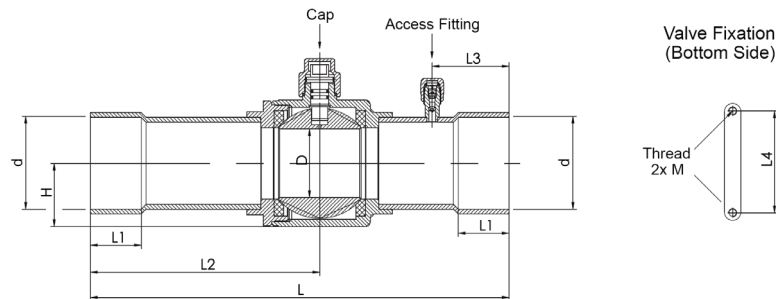
- Note:**
- SBV model with connection size 3-1/2" (89mm) available on request
  - For possible accessories see page 5





# SANHUA SBV SERIES Ball Valve

## DIMENSIONS & WEIGHT



Product Number		L	L1	L2	L3 <sup>1)</sup>	L4	D	H	M	Weight
Without access fitting	With Access Fitting	[mm]	[mm]	[mm]	[mm]	[mm]	[mm]	[mm]	[mm]	[kg]
SBV-13001	SBV-13019	132	8	68	31	22	14	16	M4 x 0,7	0,28
SBV-13002	SBV-13020	132	8	68	31	22	14	16	M4 x 0,7	0,28
SBV-13037	SBV-13039	132	8	68	31	22	14	16	M4 x 0,7	0,29
SBV-13003	SBV-13021	132	8	68	31	22	14	16	M4 x 0,7	0,29
SBV-13004	SBV-13022	160	10	85	31	22	14	16	M4 x 0,7	0,30
SBV-13005	SBV-13023	160	10	85	31	22	14	16	M4 x 0,7	0,30
SBV-13006	SBV-13024	160	12	85	31	22	14	16	M4 x 0,7	0,30
SBV-13007	SBV-13025	160	12	85	31	22	14	16	M4 x 0,7	0,30
SBV-13008	SBV-13026	185	14	99	37	30	19	20	M4 x 0,7	0,51
SBV-13009	SBV-13027	185	14	99	37	30	19	20	M4 x 0,7	0,51
SBV-13010	SBV-13028	185	17	99	37	30	19	20	M4 x 0,7	0,52
SBV-13011	SBV-13029	208	20	112	44	38	25	25	M4 x 0,7	0,73
SBV-13012	SBV-13030	208	20	112	44	38	25	25	M4 x 0,7	0,73
SBV-13013	SBV-13031	251	25	136	44	48	32	31	M6 x 1,0	1,42
SBV-13038	SBV-13040	281	29	151	56	55	38	35	M6 x 1,0	1,90
SBV-13014	SBV-13032	281	29	151	56	55	38	35	M6 x 1,0	1,90
SBV-13015	SBV-13033	305	34	167	56	74	50	46	M6 x 1,0	3,74
SBV-13016	SBV-13034	305	34	167	70	74	50	46	M6 x 1,0	3,79
SBV-13017	SBV-13035	305	37	167	56	74	60	56	M6 x 1,0	6,08
SBV-13018	SBV-13036	378	42	186,2	80	90	70	63	M6 x 1,0	8,81
SBV-13041	SBV-13043	422,7	42	207,5	75	108	80	75	M6 x 1,0	11,32
SBV-13046	SBV-13045	423	42	210,0	75	148	95	91	M6 x 1,0	19,94
SBV-13042	SBV-13044	423	42	210,0	75	148	95	91	M6 x 1,0	19,94

**Note:** 1) Applicable to versions with access fitting - SBV(M)-JA series

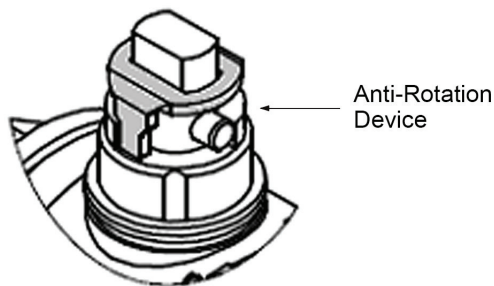




# SANHUA SBV SERIES Ball Valve

## BALL VALVES WITH INTEGRATED ANTI-ROTATION DEVICE

The steel ring placed on the stem under the cover cap prevents the accidental rotation of the ball during the system operation.



General Characteristics									
Without Access Fitting		Connections		Kv	Wrench		PED Category	With Access Fitting	
		Ø d			Size				
		ODF			Cap				
Model	Product Number	[inch]	[mm]	[m <sup>3</sup> /h]	[mm]		Model	Product Number	
SBV(M)-A9YHSY-10-S	SBV-13047	-	28	51,5	17	3.3	SBV(M)-JA9YHSY-10-S	SBV-13051	
SBV(M)-A9YHSY-9-S	SBV-13055	1 1/8	-	51,5	17	3.3	SBV(M)-JA9YHSY-9-S	SBV-13063	
SBV(M)-A11YHSY-9-S	SBV-13056	1 3/8	35	80	17	I	SBV(M)-JA11YHSY-9-S	SBV-13064	
SBV(M)-A13YHSY-9-S	SBV-13057	1 5/8	-	119,8	17	I	SBV(M)-JA13YHSY-9-S	SBV-13065	
SBV(M)-A13YHSY-10-S	SBV-13048	-	42	119,8	17	I	SBV(M)-JA13YHSY-10-S	SBV-13052	
SBV(M)-A17YHSY-9-S	SBV-13058	2 1/8	54	225	19	I	SBV(M)-JA17YHSY-9-S	SBV-13066	
SBV(M)-A19YHSY-10-S	SBV-13049	-	64	225	19	I	SBV(M)-JA19YHSY-10-S	SBV-13053	
SBV(M)-A21YHSY-9-S	SBV-13059	2 5/8	-	305	19	I	SBV(M)-JA21YHSY-9-S	SBV-13067	
SBV(M)-A25YHSY-9-S	SBV-13060	3 1/8	80	635	24	I	SBV(M)-JA25YHSY-9-S	SBV-13068	
SBV(M)-A29YHSY-9-S	SBV-13061	3 5/8	92	805	26	I	SBV(M)-JA29YHSY-9-S	SBV-13069	
SBV(M)-A33YHSY-10-S	SBV-13050	4 1/8	105	950	32	I	SBV(M)-JA33YHSY-10-S	SBV-13054	
SBV(M)-A34YHSY-9-S	SBV-13062	4 1/4	108	950	32	I	SBV(M)-JA34YHSY-9-S	SBV-13070	

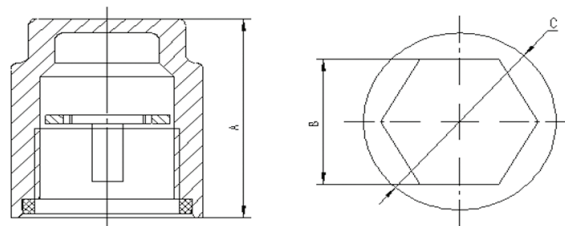


**BALL VALVES WITH INTEGRATED ANTI-ROTATION DEVICE**

Dimensions & Weight										
Product Number		L	L1	L2	L3 <sup>1)</sup>	L4	D	H	M	Weight
Without Access Fitting	With Access Fitting	[mm]	[mm]	[mm]	[mm]	[mm]	[mm]	[mm]	[mm]	[kg]
SBV-13047	SBV-13051	208	20	112	44	38	25	25	M4 x 0,7	0,73
SBV-13055	SBV-13063	208	20	112	44	38	25	25	M4 x 0,7	0,73
SBV-13056	SBV-13064	251	25	136	44	48	32	31	M6 x 1,0	1,42
SBV-13057	SBV-13065	281	29	151	56	55	38	35	M6 x 1,0	1,9
SBV-13048	SBV-13052	281	29	151	56	55	38	35	M6 x 1,0	1,9
SBV-13058	SBV-13066	305	34	167	56	74	50	46	M6 x 1,0	3,74
SBV-13049	SBV-13053	305	34	167	70	74	50	46	M6 x 1,0	3,79
SBV-13059	SBV-13067	305	37	167	56	74	60	56	M6 x 1,0	6,08
SBV-13060	SBV-13068	378	42	186,2	80	90	70	63	M6 x 1,0	8,81
SBV-13061	SBV-13069	422,7	42	207,5	75	108	80	75	M6 x 1,0	11,32
SBV-13050	SBV-13054	423	42	210	75	148	95	91	M6 x 1,0	19,94
SBV-13062	SBV-13070	423	42	210	75	148	95	91	M6 x 1,0	19,94

**Note:** 1) Applicable to versions with access fitting - SBV(M)-JA series  
2) All the models with anti-rotation device (SBV-13047 to SBV-13070) are available only on request (no stock, enhanced lead time)

**ACCESSORIES**



*Anti-Rotation Device*

Model	Product Number	Applicable for SBV models with:		Cap Nut	Dimensions mm		
		Inch connections:	Metric connections:		A	B	C
SK01	SBV-13101	1" 1/8 - 1" 3/8	28mm - 35mm	M18X1-6H	27,0	H17	Ø 24
SK02	SBV-13102	1" 5/8	42mm	M22X1-6H	27,5	H17	Ø 26
SK03	SBV-13103	2" 1/8 - 2" 5/8	54mm - 64mm	M22X1-6H	27,5	H19	Ø 28
SK04	SBV-13104	3" 1/8 - 3" 5/8	80mm - 92mm	M26X1-6H	29,5	H24	Ø 32
SK05	SBV-13105	4" 1/8 - 4" 1/4	105mm - 108mm	M32X1-6H	32,0	H29	Ø 38

**Note:** 1) Steel Anti-Rotation ring and Brass Cover Cap are in the extent of delivery

