

Horizontal Split Case



Features & Benefits

The casing is axially split, which permits removal of the complete rotor without moving either piping or motor. Pumps generating high heads have double volutes to reduce radial forces, ensuring minimal shaft deflection and low bearing loads.

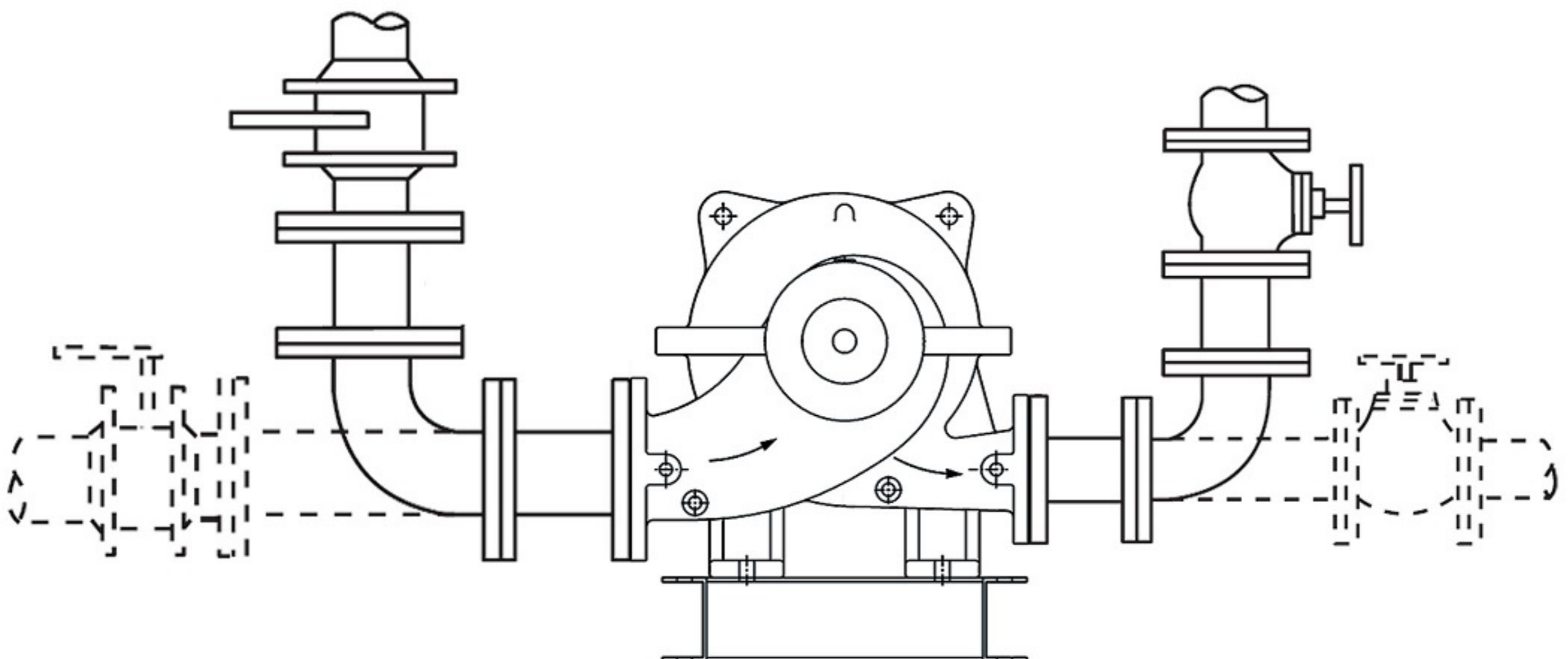
Applications

- ▶ Fire-fighting systems
- ▶ Water supply systems
- ▶ Industrial circulating systems
- ▶ Water systems for industrial uses
- ▶ Warm water heating, chilled & cooling water systems

Operation Data

Pump Size	DN 80 up to 900 mm
Capacities	up to 1500 l/s
Heads	up to 200 Meter
Speed	1450 - 2900 rpm
Motor Rating	up to 3400 kW
Operating Temperature	up to 105°C*

* The material of pumps differ according to the type of pumped liquid, operating temperature and pressure.



Performance Range

