



CT PERFORATORS SDN BHD
SAMPLE
MAT. THICKNESS 2.0 MM(1) ALU
HOLE DIA. Ø 20.0 MM
STAG. PITCH 40.0 MM (45 DEGREE)
OPENING AREA

**HOLE DIA: 20.0MM PITCH: 40.0MM 45
DEGREE**

Description

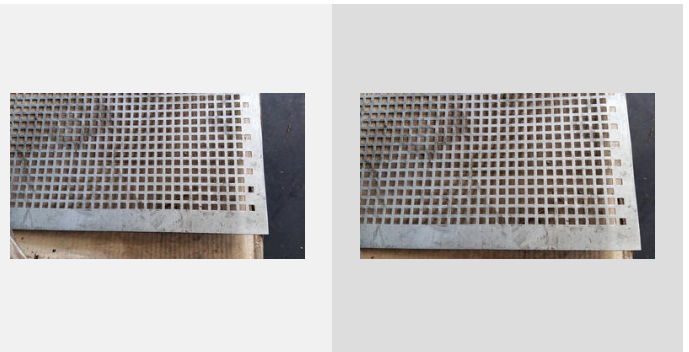
HOLE DIA: 20.0MM PITCH: 40.0MM
45 DEGREE

SQUARE HOLE

Description

SQUARE HOLE

HOLE DIA : 8MM X 8MM PITCH: 12.0MM



COMPOSITE PANEL

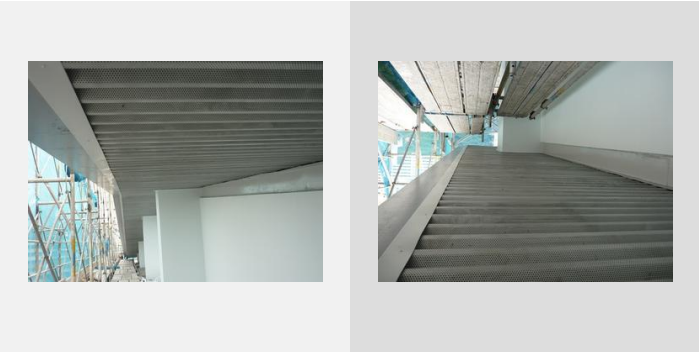
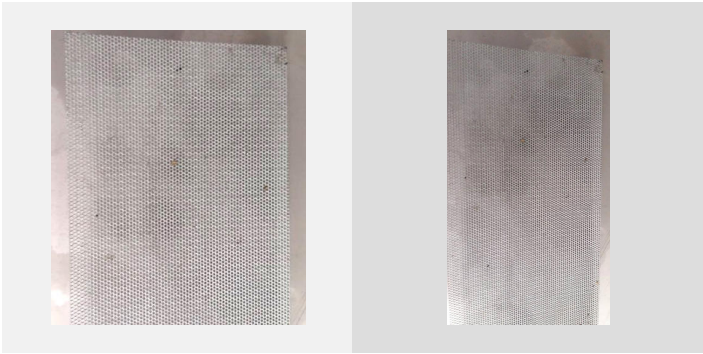
Description

HOLE DIA: 50.0MM PITCH: 100.0MM

HOLE DIA: 1.1MM PITCH: 1.5MM

Description

HOLE DIA: 1.1MM PITCH: 1.5MM



KALZIP

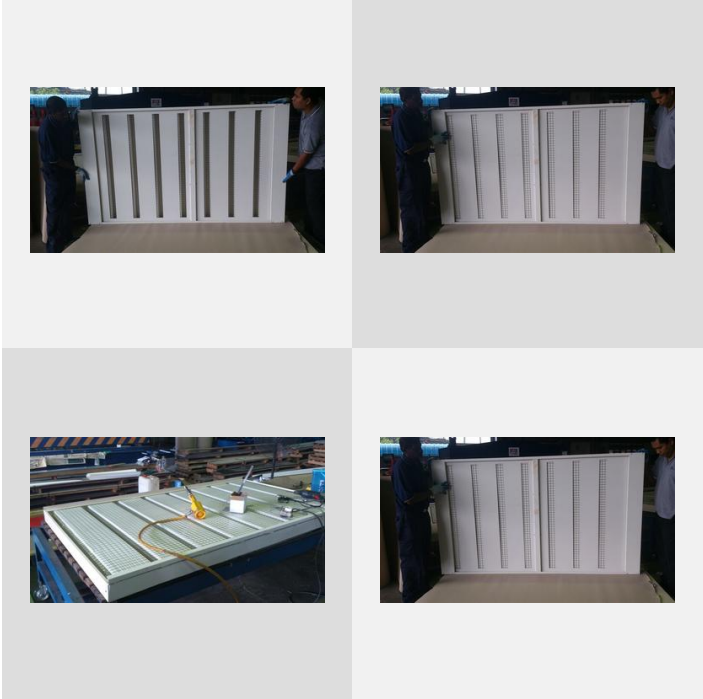
Description

KALZIP

COILS PERFORATION

Description

EP



COILS PERFORATION

Description

EP



Perforated Sheet

Description

Perforated Sheet

Email: chee@ctperforators.com.my

Website: ctperforators.com.my

No.1, Jalan TTC 10, Taman Teknologi Cheng, 75250 Melaka.





Metal Perforation

Description

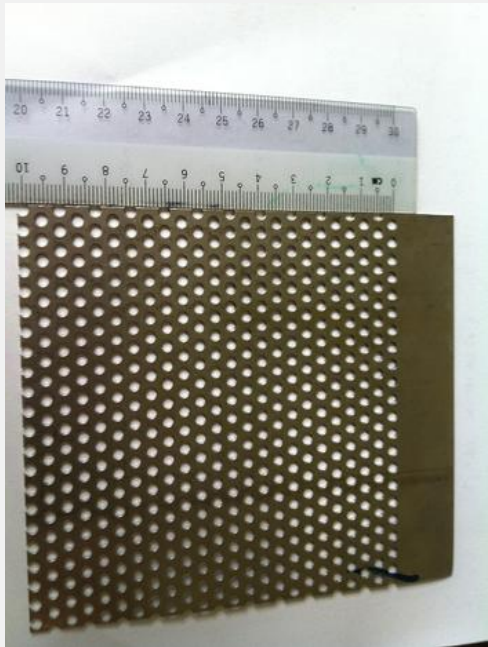
Metal Perforation



Metal Perforation

Description

Email: chee@ctperforators.com.my Website: ctperforators.com.my No.1,
Jalan TTC 10, Taman Teknologi Cheng, 75250 Melaka.

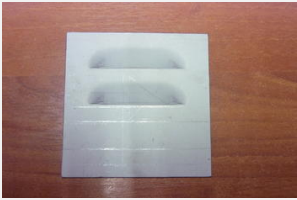
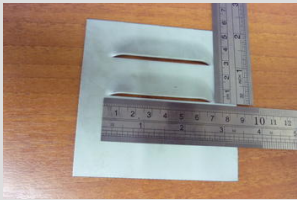


Metal Perforation

Description

Technical Characteristic :

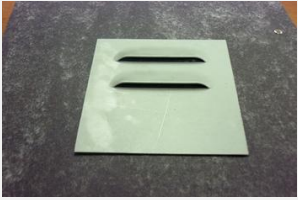
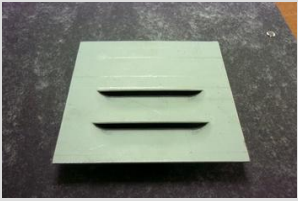
- Formula for calculation of the weight of a perforated sheet
- Perforation Formula
- Round Holes



Metal Perforation

Description

Metal Perforation





Metal Perforation

Description

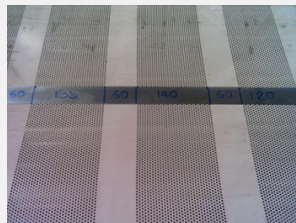
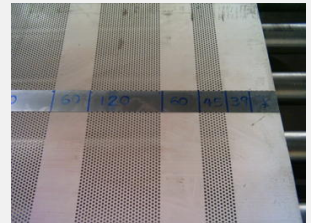
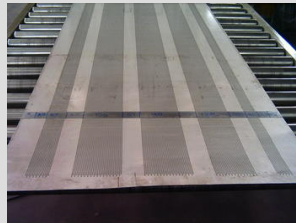
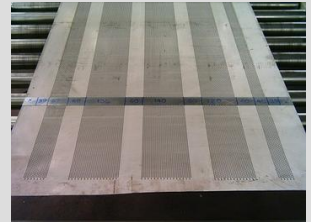
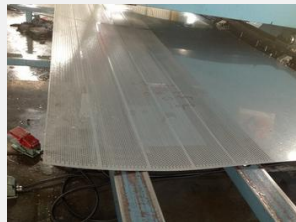
Metal Perforation



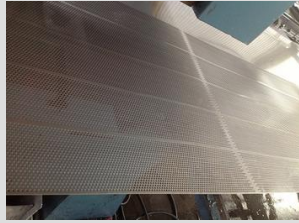
Manik Prestarroof

Description

Manik Prestarroof



Prepainted Steel Coil



Metal Perforation

Description

Technical Characteristic

- Formula for calculation of the weight of a perforated sheet
- Perforation Formula
- Round Holes



C.T. Perforators Sdn. Bhd.

No. 1, Jalan TTC 10, Taman Teknologi, 75250, Melaka, Malaysia

Tel.....06-334 2988

Fax.....06-334 2985

Mobile Phone.....012-228 9062

E-Mail.....chee@ctperforators.com.my

