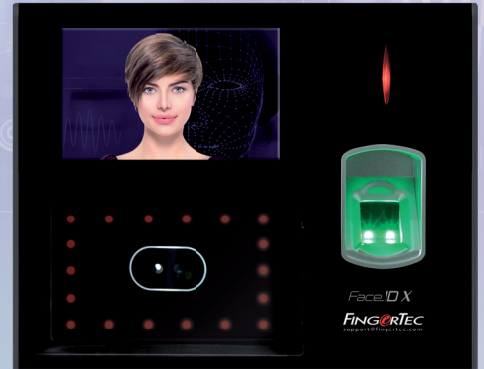
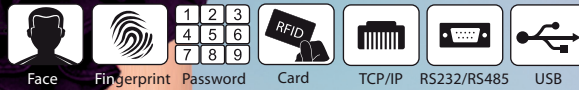


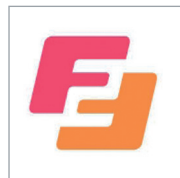
Face ID X Bigger & Better

2-in-1 Face & Fingerprint Recognition Terminal



The latest addition of Face ID series has arrived and this time around the face recognition machine is made bigger and better!

Face ID X is a biometric verification terminal that contains two types of advanced biometrics technologies with dual cameras, 1.2 GHz Single Core microprocessor, 1.0GB flash memory, 1.0GB SDRAM, various types of data communication and an enormous data storage capacity; all of which to provide a swift and accurate biometrics verification. The device can contain up to 30K face recognition with 1:1 verification, 10K fingerprint templates, 10K cards, and a huge 1 million transaction data at any given time. Face ID X is designed to provide users with a convenient and contactless verification in addition to multiple verification options. With the mighty capacity in which Face ID X offers, the face recognition machine is thus taken to another level of power!



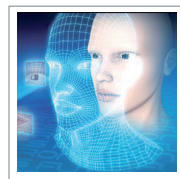
Contactless Identification

One of the many advantages of face identification is its contactless nature. Just stand still in front of the camera and get verified instantly.



Multi-Verification Method for Versatility

Face ID X offers four different types of identity verifications: Fingerprint, Face ID, RFID card and password.



Tighten Security

Face ID X caters to a tighter access control system with implementation of both face & fingerprint biometric authentication methods simultaneously.



No Waiting Time

It takes 2 seconds to verify an identity through face recognition and 1 second for fingerprint. It'll be done before you know it!



Security and Accuracy Assured

Face ID X can be installed for door access and staff time & attendance providing companies with security and data accuracy from one single system.



Supersized Capacity

Face ID X can store up to 30,000 face templates, 10,000 fingerprint templates and up to 1,000,000 transaction logs which can be downloaded into a computer via TCP/IP, RS232, RS485, or via USB flash disk connection.



Shortcut Keys for Convenience

Face ID X presents users with the convenient shortcut keys, programmable for the commonly used functions.



Smooth Navigation

The full colour touch screen in Face ID X makes it easy for users to navigate through the system.



WEB LINK

Product
http://info.fingertec.com/faceidx-1

Quick Start Guide
http://info.fingertec.com/faceidx-2

Installation Guide
http://info.fingertec.com/faceidx-3

User Guide
http://info.fingertec.com/faceidx-4

Video Guide
http://info.fingertec.com/faceidx-5

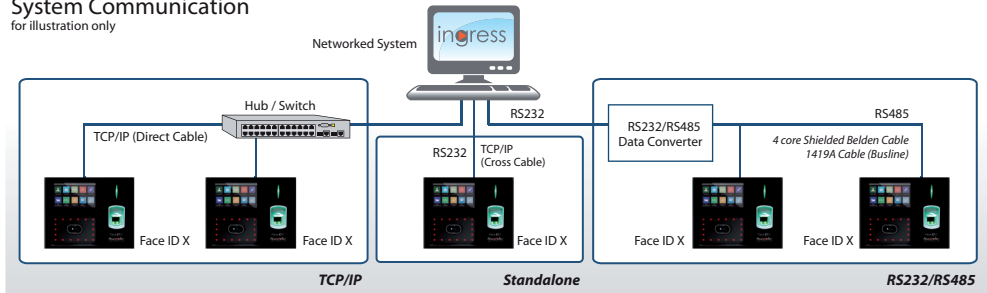
Technical Tips
http://info.fingertec.com/faceidx-6

Ingress Software
http://info.fingertec.com/ingress

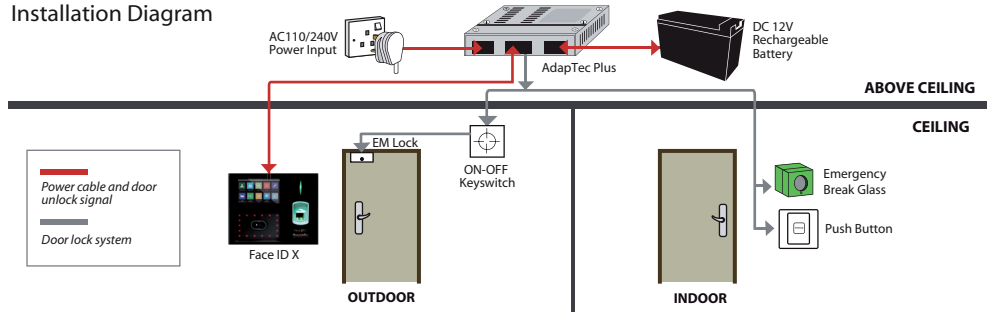
LAYOUT PLAN

System Communication

for illustration only



Installation Diagram



SPECIFICATIONS

MODEL	Face ID X
SURFACE FINISHING	Acrylonitrile butadiene styrene (ABS) & acrylic
TYPE OF SCANNER	Hi-res infrared camera & fingerprint scanner
MICROPROCESSOR	1.2GHz Single Core CPU
MEMORY	1.0GB SDRAM/ 1.0GB flash
ALGORITHM	Face BioBridge VX8.0, Fingerprint BioBridge VX9.0 / 10.0
PUSH TECHNOLOGY	Yes
DIMENSION (L X W X H), mm	194 x 110 x 145
STORAGE	
Fingerprint templates	10,000
Face templates	3000 (1:N), 30000(1:1)
Cards	10000
Transactions	1000000
ENROLLMENT & VERIFICATION	
Methods	Face (1:1, 1:N), fingerprint (1:1, 1:N), card & password
Recommended fingerprint per user ID	2
Fingerprint placement	Any angle
Verification time (sec)	Face < 2, Fingerprint < 1
Fingerprint	FAR < 0.0001%, FRR < 0.1%
Face	FAR < 0.01%, FRR < 0.1%
CARD TECHNOLOGY	
RFID: 64-bit, 125kHz, RF output power (EN300-330)	Yes
MIFARE: MIFISS0/S70, 13.56MHz	Made to order
HID: HID 1325, 26-bit, 125kHz	Made to order
COMMUNICATIONS	
Method	TCP/IP, RS232, RS485, USB disk (Optional WiFi & 3G)
Baud rates	9600, 19200, 38400, 57600, 115200
Wiegand	26-bit output
OPERATING ENVIRONMENT	
Temperature (°C)	0 ~ 45
Humidity (%)	20 ~ 80
Power input	DC 12V 3A
TIME ATTENDANCE	
Siren	Internal and external
Work codes	Yes
Fast transaction checking	Yes
MULTIMEDIA	
Display	4.3" 65K color TFT touch screen panel
Photo-ID	Yes
Short messaging	Yes
Day light saving timer	Yes
Internal backup battery	Yes (DC 12V, 2000mAh)
ACCESS CONTROL	
EM lock driving output	DC 12V / relay output
Alarm output	NO/NC
VOICE / DISPLAY LANGUAGE (TERMINAL)	
English (Standard), Arabic, Indonesian, Chinese Traditional / Simplified, Cantonese, Vietnamese, Spanish, Portuguese (Portugal), Turkish, Persian. Other languages are available upon request.	

NOTE: Specifications are subject to change. Check <http://product.fingertec.com> for latest product information.

Authorized Reseller:



Packaging

Dimension (mm) : 298 (L) x 123 (W) x 222 (H)
Weight : 1.84 kg



FINGERTEC
www.fingertec.com

© 2018 Timetec Computing Sdn Bhd. All rights reserved.