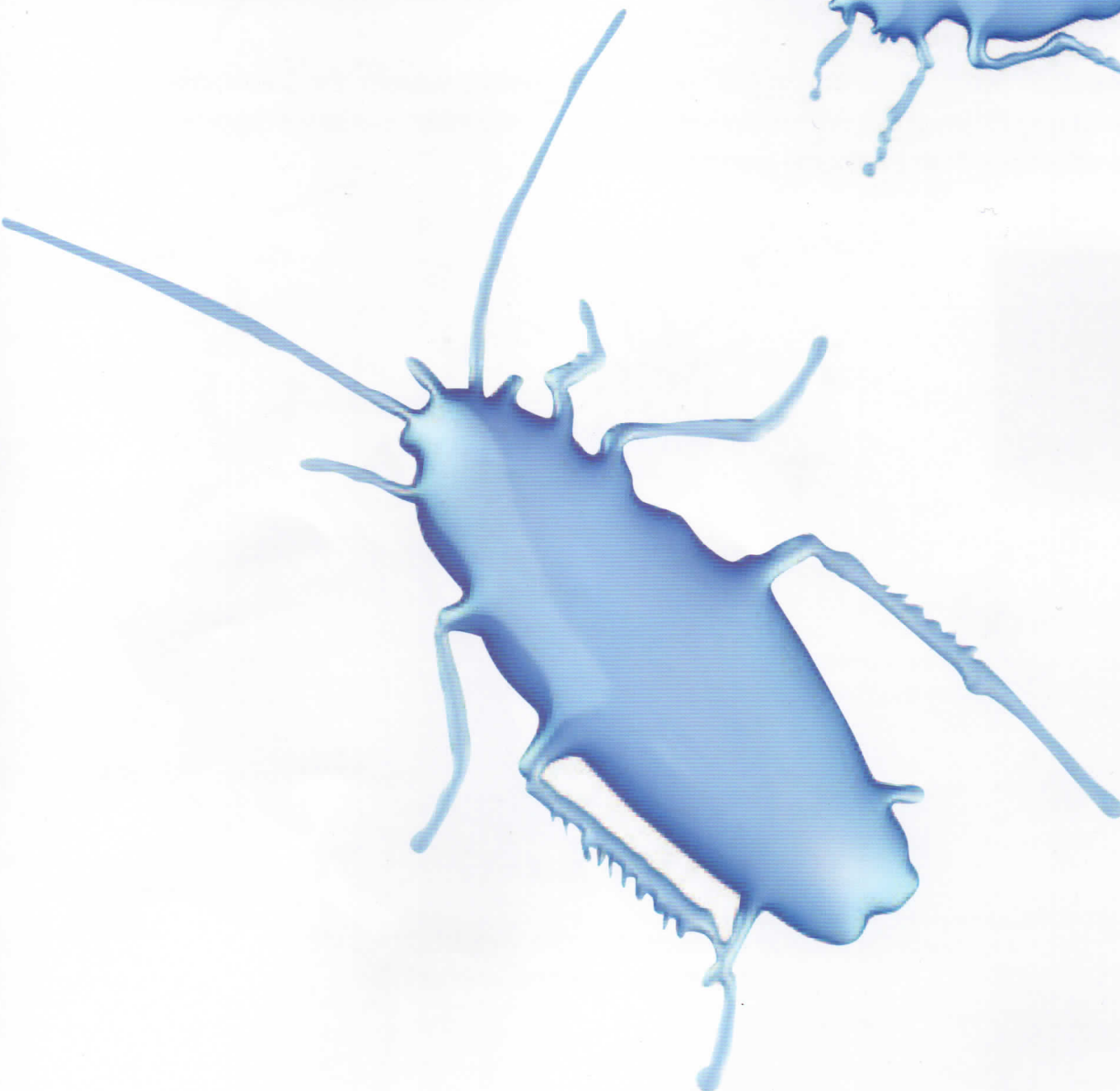
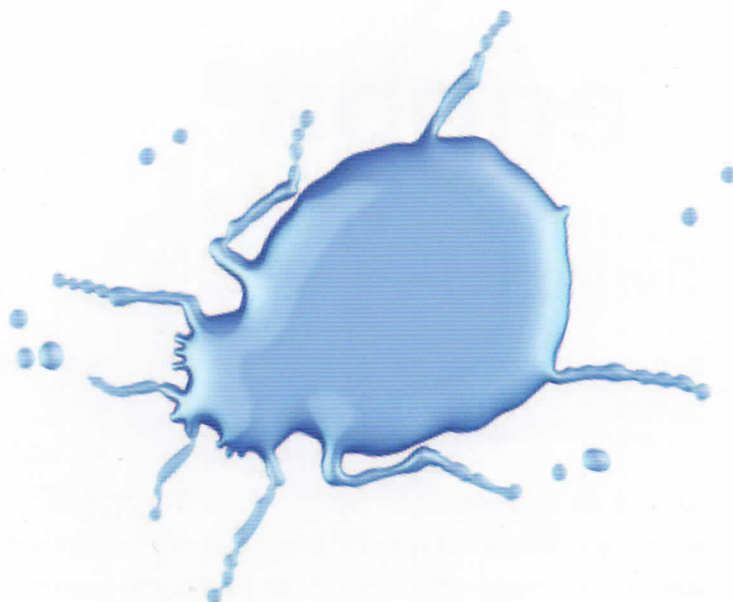


Tenopa®

The complete spray treatment.
A dual action formulation for
control selected insect life stages.



BASF **Pest Control Solutions**

- The effective insect pest solution
- Knockdown and extended residual action
- Acceptable in use

Enabling the effective solutions to your pest problems

 **BASF**
We create chemistry

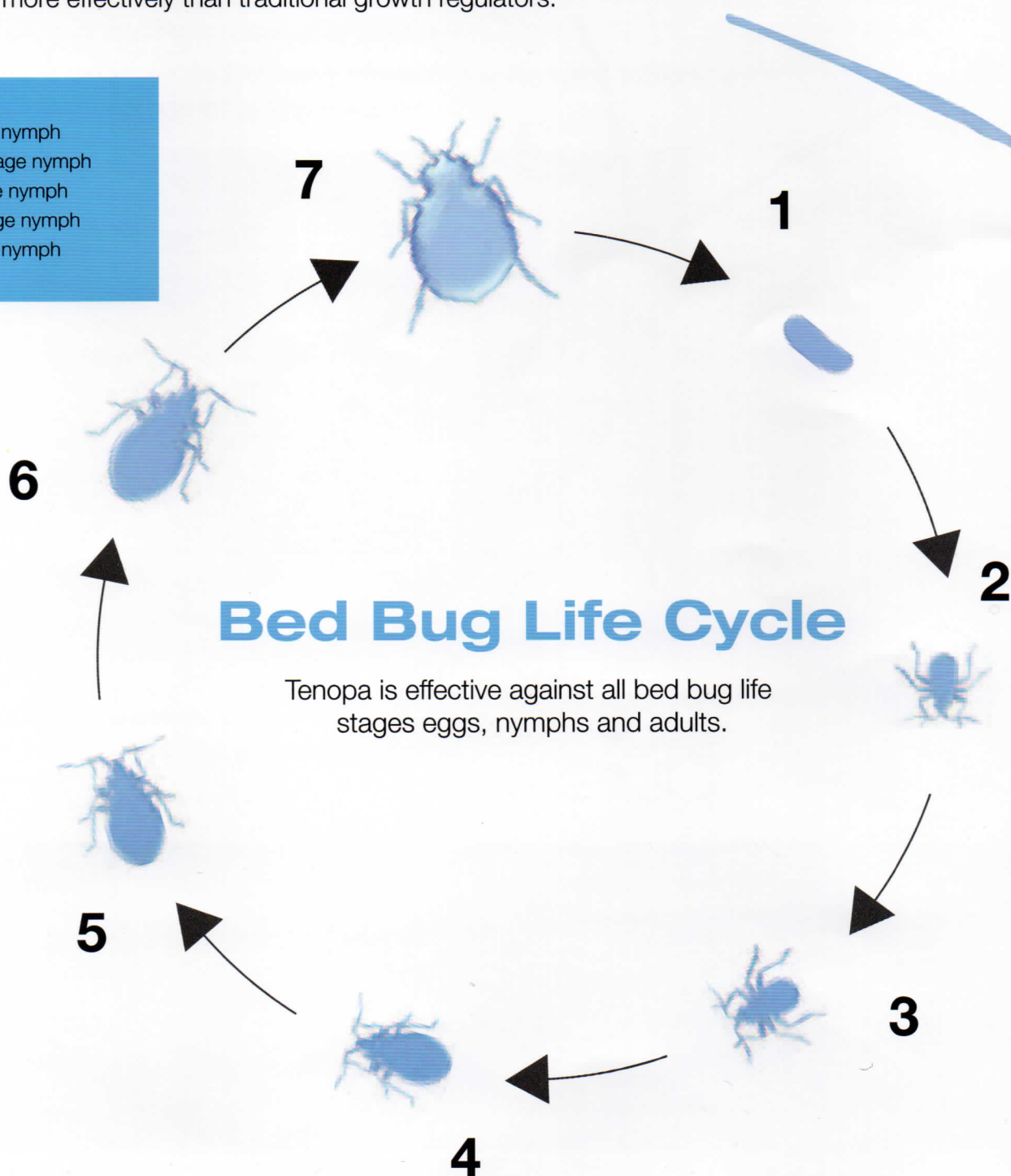
Tenopa®

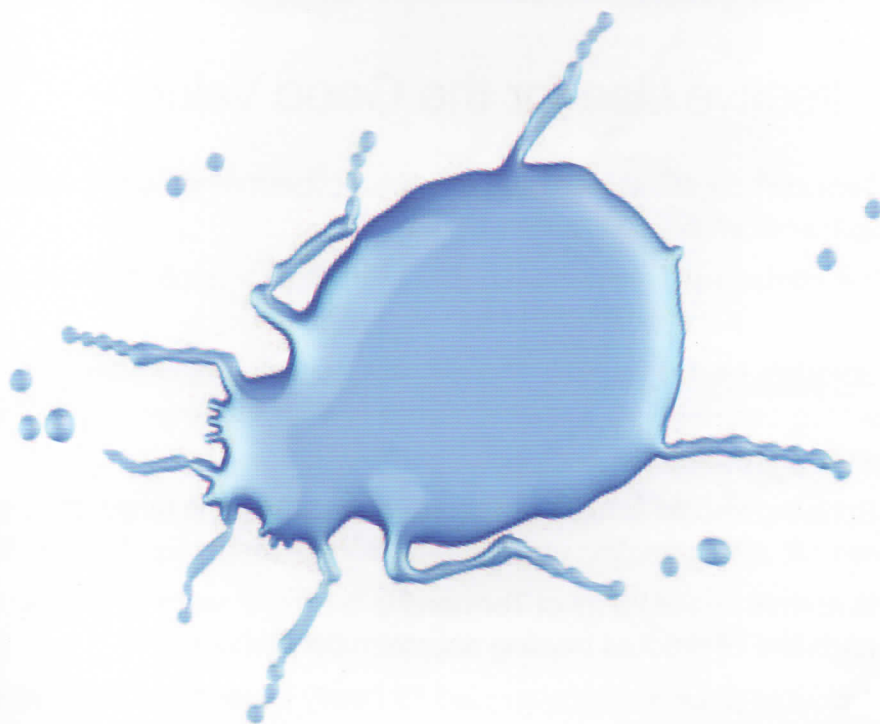
The Insect Pest Solution

Tenopa® combines 30g/l of alpha-cypermethrin with 30 g/l flufenoxuron for good and complete insect control.

As well as its immediate pyrethroid effect on the adult insect nervous system, the flufenoxuron renders a high proportion of eggs from any survivors non-viable and lethally interrupts larval development – working far more effectively than traditional growth regulators.

1. Egg
2. First stage nymph
3. Second stage nymph
4. Third stage nymph
5. Fourth stage nymph
6. Fifth stage nymph
7. Adult





Performance on Cockroaches

Cockroaches are ubiquitous and live in close contact with humans. They are found everywhere - in homes, restaurants, hospitals and industrial sites - especially in areas concerned with food handling, preparation and storage.

Cockroaches pose a threat to public health because they carry disease-causing microorganisms responsible for diarrhea, food poisoning and dysentery.

They usually feed on decaying matter and waste where they pick up bacteria and fungi. Because they also feed on human food and, they are capable of transmitting these bacteria and fungi to food supplies. Allergens produced by cockroaches can present serious health threat to people prone to allergies. In addition these cockroaches are a nuisance because they emit an odor that permeates areas where they breed.

Extensive laboratory tests confirm that flufenoxuron is highly active at all nymphal stages and causes a severe reduction in the viability of eggs produced by adult females exposed to the treatment.

Effective Use for the Good Value

Tenopa® contains 30g/l each of alpha-cypermethrin and flufenoxuron as a water-based suspension concentrate.

It is diluted with water at the rate of 5ml/litre for application through all standard knapsack or hand-held sprayers at low pressure.

Sprayers should be filled with the required amount of water and the measured dose of **Tenopa®** added before being shaken thoroughly to ensure even mixing. Thorough shaking is also recommended after any prolonged breaks from work.

Spraying should achieve a uniform coverage of the target area without excessive wetting or liquid run-off. When treating around food storage areas, food should be covered and protected.

In normal use of 25 ml of **Tenopa®** in 5 litres of water is sufficient to treat around 100m² of surface, each litre of product treating approximately 4,000m².

A double dose is recommended for heavy infestations or for soiled or highly absorbent/porous surface to ensure sufficient coverage for optimum activity.

PESTS	LOCATION	RATES	SPRAY VOLUME
		5 litre of water / 100m ²	
German cockroach (<i>Blatella germanica</i>) American cockroach (<i>Periplaneta americana</i>)	Homes, hospitals, hotels, restaurants, kitchens, industrial sites, and food processing plants	25 ml	50 ml / m ²
Bedbug (<i>Cimex lectularius</i>)	Carpet, mattress, wallpaper		

This brochure is intended as advice.

The recommendations for use provided with each product should be carefully observed.



Tenopa® is a registered trademark of BASF.

Always read the label and production information before use.

Registered by:

BASF (Malaysia) Sdn. Bhd. (182671-M)
No. 2, Jalan Astaka U8/87, Bukit Jelutong, Seksyen U8,
40150 Shah Alam, Selangor Darul Ehsan, Malaysia.
Tel.: 03-5628 3888 Fax: 03-5628 3777