

Horizontal Split Case



Features & Benefits

The casing is axially split, which permits removal of the complete rotor without moving either piping or motor. Pumps generating high heads have double volutes to reduce radial forces, ensuring minimal shaft deflection and low bearing loads.

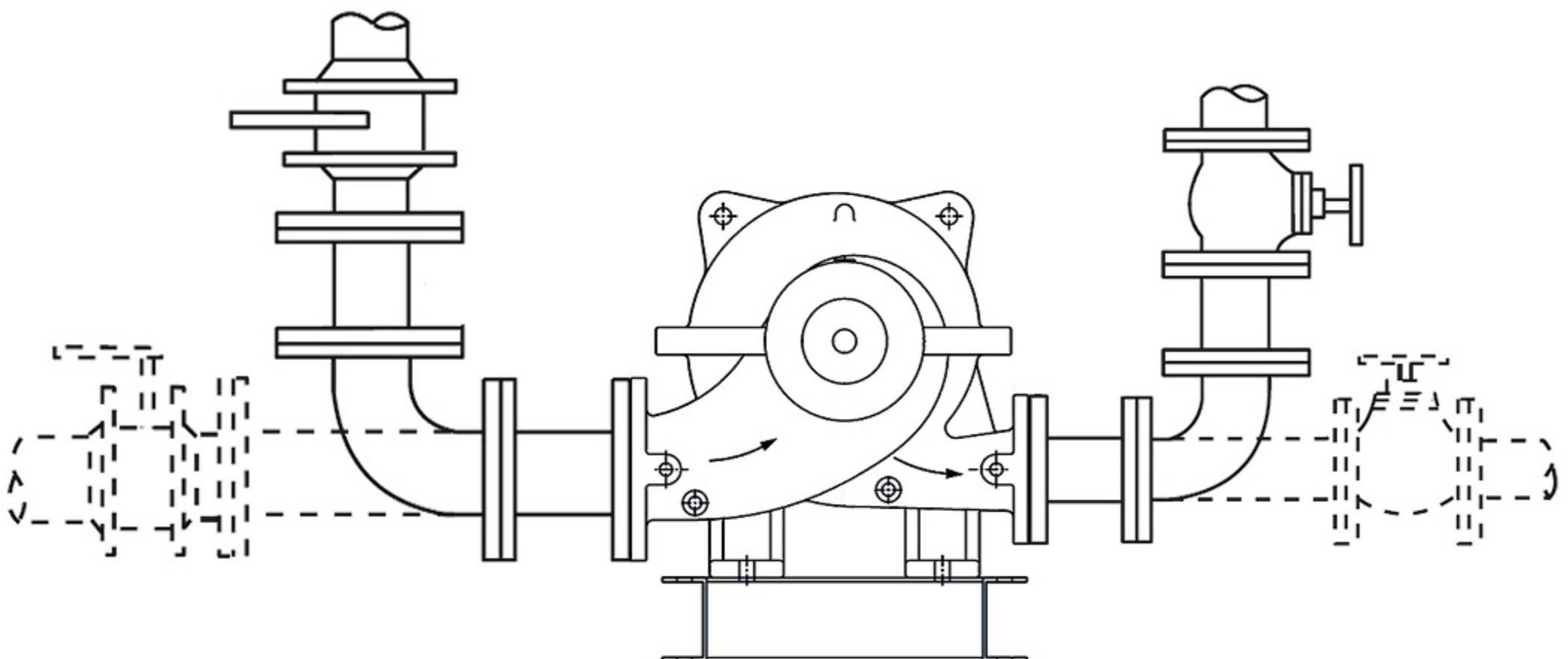
Applications

- ▶ Fire-fighting systems
- ▶ Water supply systems
- ▶ Industrial circulating systems
- ▶ Water systems for industrial uses
- ▶ Warm water heating, chilled & cooling water systems

Operation Data

| | |
|-----------------------|--------------------|
| Pump Size | DN 80 up to 900 mm |
| Capacities | up to 1500 l/s |
| Heads | up to 200 Meter |
| Speed | 1450 - 2900 rpm |
| Motor Rating | up to 3400 kW |
| Operating Temperature | up to 105°C* |

* The material of pumps differ according to the type of pumped liquid, operating temperature and pressure.



Performance Range

