



Adding or upgrading wheel and undercar services to your shop's capabilities is a sure way to grow your customer base, as well as your bottom line. Like everything we offer, you can also be sure the equipment will perform flawlessly and is built to last.

UNDERCAR EQUIPMENT THAT GOES ABOVE AND BEYOND.

From tire changers and tire pressure monitoring tools to wheel balancers and torque sticks, our equipment combines ultimate accuracy with intuitive operation so you can grow your skill set even further. And with additional solutions like our ball joint press that makes removal and installation a snap, you'll also save time.

UNDERCAR





WHEEL BALANCING: BALANCERS

Wheel Balancers

Snap-on® Wheel Balancers use a patented Virtual Plane Measurement system to achieve accuracy and repeatability. A variety of weight placement options such as Static, Dynamic, five ALU modes, ALU-S, hidden spoke

and match mounting optimization modes provide the versatility for these balancers in a variety of applications on passenger cars, light trucks and commercial vehicles.



- Easy to use display panel includes individual keys for parameter input
- Static mode for single-plane narrow wheels
- Dynamic mode for dual-plane balancing
- SAPE arm accelerates set-up time without entering wheel type
- Five ALU-S Modes provide multiple combinations of hammer and adhesive weight placements
- ALU-S Mode provides two-plane ALU weight placement

- Match Mount-Optimization Feature determines proper phasing between tire and wheel and allows minimal weight usage
- Hidden Weight Mode for weight placement behind spokes
- Multiple Operator Feature stores parameters for up to four individual operators
- Fine Weight Toggle allows operator to choose between 0.25 oz Standard mode and 0.05 oz Fine mode
- Allows use of common adaptors and pin plates

Specification	EEWB330B	EEWB331B	EEWB332B	EEWB334A
Type	Handspin	Motorized	Motorized	Motorized
Display Type	Digital	Digital	Digital	Touchscreen
Data entry Distance/Diameter	SAPE arm	SAPE arm	SAPE arm	SAPE arm
SAPE entry Width	Manual	Manual	Sonar	Sonar
Weight Placement	SAPE	SAPE	Laser	Laser
Rim Width (Maximum), inches (mm)	20 (508)	20 (508)	20 (508)	20 (508)
Rim Diameter, inches (mm)	8-30 (203-762)	8-30 (203-762)	8-30 (203-762)	8-30 (203-762)
Max Wheel Weight, lb (kg)	120 (54)	120 (54)	154 (70)	154 (70)
Max Tire Diameter, inches (mm)	42 (1,067)	42 (1,067)	42 (1,067)	42 (1,067)
Max Wheel Width, inches (mm)	20 (508)	20 (508)	20 (508)	20 (508)
Cycle Time, seconds	15	12	4.5	4.5
Measuring Speed, RPM	100	200	200	200
Weight Placement Resolution	± 0.7°	± 0.7°	± 0.7°	± 0.7°
Weight Imbalance Resolution (Roundoff Mode), oz (g)	0.25 (7.1)	0.25 (7.1)	0.25 (7.1)	0.25 (7.1)
Weight Imbalance Resolution (Non-Roundoff Mode), oz (g)	0.05 (1.42)	0.05 (1.42)	0.05 (1.42)	0.05 (1.42)
Electrical Requirements, V AC/ph/Hz/A	115/1/60/2	115/1/60/6	115/1/60/6	115/1/60/6
Required Work Area (W x D), inches (mm)	52 x 48 (1,321 x 1,219)	60 x 48 (1,524 x 1,219)	62 x 67 (1,575 x 1,702)	62 x 67 (1,575 x 1,702)
Machine Weight, lb (kg)	174 (79)	280 (127)	325 (147)	325 (147)

Technical Support 1-800-225-5786

EEWB330B Hand Spin Wheel Balancer

- Small footprint handspin wheel balancer with features of most high-end machines

EEWB331B Motorized Wheel Balancer

- Small footprint motorized wheel balancer with features of most high-end machines

EEWB332B Motorized Wheel Balancer with Raised Display

- Medium footprint motorized wheel balancer with a high-end feature set with faster throughput times
- Laser guided weight placement on the inside of the wheel

EEWB334A Motorized Wheel Balancer with Touchscreen Video Display

- Motorized wheel balancer that features extremely fast data entry, low cycle times
- Laser guided weight placement on the inside of the wheel

Standard Accessories

Stock No.	Description
EAM0003J69A	3.4-5.4" Cone
EAM0005D25A	3.8-4.5" Cone
EAM0005D24A	2.8-3.9" Cone
EAM0005D23A	1.6-3.0" Cone
EAA0263G66A	40 mm Quick Nut

Stock No.	Description
EAC0058D08A	Pressure Disk
EAC0058D15A	Soft Protector Ring
EAM0021D90A	Standard 40 mm Stub Shaft
WWPR13A	Wheel Weight Pliers
EAA0247G21A	Rim Width Caliper



- Read and follow all safety messages and instructions
- Read safety precautions on pages W1 to W4

WHEEL BALANCING: MOTORCYCLE WHEEL BALANCER AND TIRE CHANGER



EEWB333A

Motorcycle Wheel Balancer

EEWB333A Motorcycle Wheel Balancer

- Handspin operation features static and dynamic balancing modes
- Features five ALU modes to place weights in proper location on multiple wheel configurations
- Input of rim distance by SAPE arm for accelerated set up time
- Allows exact weight placement on rim when using tape weights
- Weight minimization and balancing optimization modes for reducing the overall weight usage
- Split weight mode to hide weights behind spokes
- Stadium weight tray is curved to access keypad and weight pockets easily
- Multiple operator feature allows several users to quickly recall settings
- Virtual Plane imaging technology for unsurpassed accuracy

Specifications	EEWB333A
Accuracy, oz. (grams)	0.25
Cycle Time, seconds	6-10
Shaft Measuring Speed, RPM	100
Shaft Capacity, lb (kg)	70 (32)
Rim Dia., inches (mm)	8-30 (203-762)
Rim Width, inches (mm)	3-20 (76-508)
Tire Diameter, inches (mm)	42 (1,067)
Electrical Req.	115 V AC, 1 ph, 60 Hz, 2 A
Shipping Weight, lb (kg)	174 (79)



EAA0260D80A

Motorcycle Balancing Accessories

EAA0260D80A Optional Motorcycle

Adaptor For Snap-on® Wheel Balancers

- Holds wheel and tire assembly into position
- Minimizes wobble and improves accuracy

EAA0260D16A BMW® Adaptor for Monolever Wheels

EAA0277D03A 10 mm Shaft Assembly

EAA0277D05A Scooter Adaptor

EAA0277D07A Suzuki®, Moto Guzzi® V11 14 mm

Shaft Cone set

EAA0277D20A Ducati®/Triumph®

Adaptor Set

EAA0277D22A Harley-Davidson® 3/4" Shaft

Adaptor - 311.2 mm Long

EAA0277D09A Honda®/Yamaha® Monolever

Adaptor Flange

(bolts direct to wheel balancer)

EAA0277D11A Aprilia® Monolever Adaptor Flange

(bolts direct to wheel balancer)



EAA0277D09A



EEWH310B

Motorcycle Tire Changer

EEWH310B Motorcycle Tire Changer

- Designed to change motorcycle and ATV tires along with standard automotive tires
- Raised turntable clamps provide additional clearance for motorcycle wheels with brake discs and sprocket assemblies
- Swing arm and mount/dismount head provide 13" maximum wheel width*
- Specially designed bead breaker shovel for smaller diameter wheels

Specifications	EEWH310B
Outside Clamping Range (in)	8-21
Inside Clamping Range (in)	12-20
Rim Width (max, in)	13†
Tire Diameter (max, in)	40
Tire Width (max, in)	13*
Bead Breaking Width (max, in)	13
Bead Breaking Force (lb @ 150 PSI)	3,300
Air Requirements (PSI)	140-170 @ 8.5 CFM
Voltage Requirements	120 V 60 Hz, 20 A
Net Weight, lb (kg)	306 (139)
Overall Dimensions, inches	67 x 30 x 28

†10"-18" car, 8"-15" scooter,
15"-21" motorcycle *13" car, 10" motorcycle

Technical Support
1-800-225-5786

WHEEL BALANCING: ACCESSORIES



KR401A

WWPR13A

WWH13LG

WWH13SM

WWH36HD

Wheel Balancing Accessories

KRD401A Wheel Weight Cabinet

- Storage for a wide assortment of wheel weights
- 36 compartments, each measuring 3-7/8 x 3-7/8"

WWPR13A Wheel Weight Pliers

- Easily removes and replaces wheel weights as well as cutting and crimping
- Made of heat-strengthened steel
- Comfortable vinyl handle grips and replaceable hard plastic hammer tip

WWH13LG Wheel Weight Hammer (Blue-Point®)

- Designed for use on steel and zinc clip-on wheel weights
- Soft hammer face to avoid scratches and dings
- Solid Nuplaglas® handle resists most shop chemicals and has a nonslip grip
- Replaceable cold rolled steel hook assembly to ensure long service life
- Works best on US brands that use traditional dimension dismounting holes

WWH13SM Wheel Weight Hammer (Blue-Point®)

- Designed for use on steel and zinc clip-on wheel weights
- Soft hammer face to avoid scratches and dings
- Solid Nuplaglas® handle resists most shop chemicals and has a nonslip grip
- Replaceable cold rolled steel hook assembly to ensure long service life
- Specially designed small diameter dismounting hook is used on wheel weights with smaller dimension dismount holes

WWH36HD Wheel Weight Hammer (Blue-Point®)

- Heavy duty wheel weight hammer for truck and high volume tire shops
- Heavy duty Nuplaglas® handle is chemical-resistant and features non-slip cushioned grip
- 30 oz head weight for working on larger vehicles
- Soft, replaceable hammer face avoids scratches and dings to rim
- Removes perfect-style wheel weights without touching rim of vehicle
- Removes larger v-clips found on medium-duty truck rims

Balancer Pin Plate Kits

- Pin plate kits accurately align and center the rim to the wheel balancer
- Eliminates damage to plastic clad wheels by avoiding contact with the outer surface of the wheel
- Used to properly mount wheels to Wheel Balancer and is positioned outside of wheel, in-between the quick nut and lug stud holes
- Mirrors mounting wheel to the vehicle's hub and minimizes imbalance errors
- Applies even pressure to lug stud surfaces and locates the wheel on center of Balancer shaft
- Avoids misalignment by improper and inconsistent mounting on the balancer
- When mounted, the plate and stud system places an even clamping force on the rim and centers the assembly on the balancer

Stock No.	Description	EEWB3-1A
EEWB3-11A	Adaptor Plate #1	1X
EEWB3-120A	Adaptor Plate #2	1X
EEWB3-13A	Adaptor Plate #3	1X
EEWB3-140A	Adaptor Plate #4	1X
EEWB3-02A	Style B Stud	6X
EEWB3-03A	Style C Stud	6X
EEWB3-050A	Style E Stud	8X

EEWB3-1A Balancer Plate Pin Kit

- Eliminates damage to plastic clad wheels

EEWB3-055 Extra Long E-Stud

- Additional length for custom wheels

EEWB3-4 9 pc Collet Set

- Precision-machined and sized collets fit into rear pilot hole on plastic-clad wheels to avoid damage
- Collets are shallow in length – not to interfere with plastic clad wheels
- Recommended to be used in conjunction with a pin plate on the wheel's outer side
- Includes (9) collets 2.1–2.4" (53.0–62.0 mm), 2.4–2.8" (62.0–70.5 mm), 2.7–3.1" (69.0–77.5 mm), 3.0–3.4" (76.5–86.5 mm), 3.4–3.7" (85.5–95.0 mm), 3.7–4.1" (94.0–103.0 mm), 4.0–4.4" (102.0–111.0 mm), 4.3–4.7" (110.0–119.0 mm) and 4.6–5.0" (118.0–126.5 mm)
- Larger collets require the use of EEWB3-5 Balancer Flange Spacer

EEWB3-5 Balancer Flange Spacer

- Provides added clearance for larger cones and collets
- Use with EEWB3-4 collet set

EAA0255J33A 40 mm Shaft Upgrade Kit (Blue-Point®)

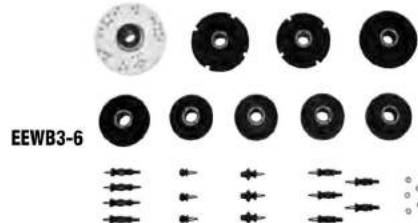
- Converts older Snap-on® balancers with 28.5 mm shaft to 40 mm (EEWB304A and B, EEWB305A and B)

EAK0309J20A Storage Stand

- Storage stand for EEWB3-1A and EEWB3-4

EEWB3-6 Balancer Plate Pin Kit

- Fits a variety of trucks such as Ford® F350®, F450® and F550® as well as GM®, GMC®, Isuzu®, Mitsubishi® Fuso® and Dodge® Sprinter®
- Some applications may require EEWB3-11A Adaptor Plate #1 (sold separately)



Stock No.	Description (Chart)	Ford®	GM®	Dodge®	Hino®, Isuzu®, Mitsubishi®, Fuso®, UD
EEWB3-11A	Adaptor Plate #1	1 each	1 each	1 each	—
EEWB3-61	Truck and Motor Home Plate	1 each	1 each	1 each	1 each
EEWB3-62	#16–12mm Stud Standard Cone Seat	4 each	4 each	4 each	—
EEWB3-63	#17 Tapered Stud Sprinter	—	—	3 each	—
EEWB3-64	#18–21 mm Stud Japanese	—	3 each	—	3 each
EEWB3-65	#19–14 mm Stud w/Short Cone Seat	5 each	4 each	5 each	—
EEWB3-67	#10 Centering Disk 4.60 dia	—	1 each	—	—
EEWB3-68	#16 Centering Disk 124/154 mm dia	—	1 each	—	—
EEWB3-69	#14 Centering Disk 5.25/5.46 dia	1 each	—	—	—
EEWB3-70	#13 Centering Disk 4.88/125 mm dia	1 each	—	—	—
EEWB3-71	#17 Centering Disk 142/170 mm	1 each	—	1 each	—
EEWB3-72	#12 Centering Disk 4.77 dia	—	—	1 each	—
EEWB3-73	#15 Centering Disk 161 mm dia	—	1 each	1 each	1 each
EEWB3-74	3/8-16 Flange Nut	5 each	4 each	5 each	3 each

EEWB3-75 3 pc Truck Step Cone Kit

- Low taper angle for hub centric wheels
- For 5.059"–5.683" and 6.190"–6.972" hub pilot hole sizes
- Works on wheel balancers with a 40mm shaft size



- Read and follow all safety messages and instructions
- Read safety precautions on pages W1 to W4

TIRE CHANGERS

Tire Changers come in a variety of models to fit each individual shop's needs. The Tilt-Back Tire Changer handles a variety of tire sizes and configurations, with a tower that tilts back to allow for wider tire and wheel assemblies and features a Pneumatic Bead Assist arm to assist the operator when mounting low profile tires. The Swing Arm Tire Changers have basic features for a shop that is new in the tire business or as an additional unit in a high-volume shop.

Common Features for all Snap-on® Tire Changers

- Mount/dismount head is designed to avoid direct contact with the rim
- Six point contact rim clamping jaws provide additional slip resistance
- Plastic protection on the mount/dismount head and clamping jaws prevents accidental rim damage
- Bead seating jets are integrated into clamping jaws and force additional air into tire during inflation
- Twin cylinder clamping offers more force and provides a uniform clamping pressure on the rim
- Multi-position bead breaker covers multiple applications such as SUV's and light trucks with tall sidewalls
- High-torque 1HP turntable motor minimizes stalling
- Optional accessories available for a variety of specialty applications.
- Optional safety restraint arm provides additional tire/wheel retention when seating beads
- Covered by a two year on-site parts and labor warranty



EEWH326A



EEWH329A



EEWH311C



EEWH312A

EEWH326A Tilt Back Tire Changer

- Two-Speed turntable offers a forward speed of 14 RPM to provide faster throughput when mounting initial bead and 7 RPM for precise speed control
- Laser guided mount/dismount head for quick and precise positioning
- Capable of clamping 24" diameter wheels on the inside and outside of the rim (28" with included extension adaptors)

EEWH311C Tilt Back Tire Changer

- Tilt back design speeds setup and allows for a 15" tire and rim clearance
- Capable of clamping 24" diameter wheels on the inside and outside of the rim

EEWH329A Swing Arm Tire Changer

- Ideal for handling passenger car, light truck and high-performance wheels
- Swing-arm design for fast set up time and also provides additional clearance for taller profile tires
- Mount-dismount head is positioned at 3 o'clock for easier access and locks in place away from rim edge

Common to EEWH326A, EEWH311C and EEWH329A:

- Pneumatic Bead Assist provides user with additional capability when servicing low-profile tires with stiff sidewalls
- Pneumatic cylinder raises and lowers each of the specialized tools into place
- Bead Depressor pushes tire sidewall into the drop center and follows the tire as the turntable rotates for easier mounting
- Top Roller also helps keep the bead in drop center
- Top Roller allows user to lubricate top bead prior to dismounting tire
- Wheel Depressor applies downward pressure during initial clamping
- Power Lifting Disc lifts tire off the lower bead of rim to aid user during the dismount process

EEWH312A Swing Arm Tire Changer

- Services OE wheel/tire assemblies on cars and light trucks

Specifications	EEWH326A	EEWH329A	EEWH311C	EEWH312A
Type	Two-Speed Tilt Back	Swing Arm	Tilt Back	Swing Arm
Pneumatic Bead Assist	Standard	Standard	Standard	Optional
Turntable Speed, RPM	7+14 CW/7 CCW	7 CW/7 CCW	7 CW/7 CCW	7 CW/7 CCW
Outside Clamping Range (in)	10-28	10-24	10-24	10-20
Inside Clamping Range (in)	12-24	12-26	12-24	12-22
Rim Width (max, in)	15	14	15	12
Tire Diameter (max, in)	40	42	40	40
Tire Width (max, in)	15	15	15	13
Bead Breaking Force (lb @ 150 PSI)	3,300	3,300	3,300	3,300
Air Requirements (PSI)	140-170 @ 8.5 CFM	140-170 @ 8.5 CFM	140-170 @ 8.5 CFM	140-170 @ 8.5 CFM
Voltage Requirements	230 V, 60 Hz, 1 ph, 12 A	115 V 60 Hz, 1 ph 20A	115 V 60 Hz, 1 ph 20 A	115 V 60 Hz, 1 ph 20 A
Net Weight, lb (kg)	766 (347)	717 (325)	750 (340)	442 (200)
Overall Width x Depth x Height (in)	41 x 55 x 69	68 x 49 x 89	41 x 55 x 69	41 x 49 x 68



Tire Changer Accessories

Stock No.	Description	EEWH312A	EEWH311C	EEWH326A	EEWH329A
EAA0331G91A	+4" Adaptors (4 each, use with EAA0304G80A)	n/a	opt	std	opt
EAA0247G14A	Bead Breaker Extension	opt	opt	opt	opt
EAA0384G58A	Bead Breaker Support Extension	opt	opt	opt	opt
EAA0247G70A	Bead Holding Clamp	opt	opt	opt	opt
EAA0332G30A	Bead Roller	n/a	std	std	std
EAA0328G91A	Clamping Adaptor	n/a	opt	opt	opt
EAA0351G93A	+6" Clamping Adaptors (4 each)	opt	n/a	n/a	n/a
EAA0351G90A	Clamping Jaw Protectors (Set of 4)	opt	n/a	n/a	n/a
EAA0329G99A	Inflation Hose Assembly	std	std	std	std
EAA0351G95A	Light Truck Adaptors (4 each)	opt	n/a	n/a	n/a
EAA0304G32A	Light Truck Clamping Jaws	n/a	opt	opt	opt
ST4025966	Magic Bead Pusher	opt	opt	opt	opt
EAA0408G24A	Rubber Jaw Protector Pad	n/a	std	n/a	n/a
EAC0113G47A	Medium Length Jaw Protector	n/a	std	n/a	n/a
EAA0304G21A	Medium Length Jaw Protector (4 each)	n/a	n/a	std	std
EAA0351G92A	Motorcycle Adaptors (4 each)	opt	n/a	n/a	n/a
EAA0329G53A	8-24" Motorcycle/ATV Adaptors (4 each)	n/a	opt	opt	opt
ST4029337	Motorcycle Tire Mounting Head	opt	opt	opt	opt
EAK0315G48A	Mount/De-Mount Protective Inserts	std	std	std	std
EAA0329G95A	Mount/Dismount Head	std	std	std	std
EAA0304G50A	Off-Road Bead Breaker Blade	opt	opt	opt	opt
EAA0304G80A	4" Offset Mount/Dismount Head	n/a	opt	std	n/a
5-14126A	Paste Brush	std	std	std	std
8-03229A	Paste Bucket	std	std	std	std
EAA0247G20A	Plastic Mount/De-Mount Tool	opt	opt	opt	std
EAA0304G37A	Plastic Mount/Dismount Head	opt	opt	opt	opt
EAA0304G52A	3 pc Plastic Rim Protector	opt	opt	opt	opt
EAA0329G33B	Pneumatic Bead Assist	opt	n/a	n/a	n/a
EAA0329G34B	Pneumatic Bead Assist	n/a	std	std	n/a
EAA0304G15A	Protective Cover for Bead Breaker	opt	opt	opt	opt
EAC0087G48A	Protective Jaw Insert (1 each)	n/a	n/a	std	std
EAA0329G27A	Quick Change Mounting Adaptor	opt	opt	opt	opt
EAA0332G32A	Rod with Roller	n/a	opt	opt	opt
EAA0304G51A	Roller Board	opt	opt	opt	opt
EAA0270J11A	Safety Restraint Arm	opt	n/a	n/a	n/a
EAA0304G72A	Safety Restraint Arm	n/a	opt	opt	n/a
EAA0307G91A	Safety Restraint Arm	n/a	n/a	n/a	std
EAA0329G74A	Slip-on Pad Motorcycle Tire Bead Breaker	opt	opt	opt	opt
EAA0247G02A	Tire Mounting Bar	std	opt	std	std
EAA0247G04A	Tire Mounting Bar Protective Sleeves	opt	opt	opt	opt
EAA0097G47A	Wave Tire Tool	opt	std	opt	opt



• Read and follow all safety messages and instructions
 • Read safety precautions on pages W1 to W4

TIRE AND WHEEL: TIRE PRESSURE MONITORING SYSTEM



TPMS Testers



TPMS3

TPMS3 Tire Pressure Sensor System Tool Kit

- Test TPM Sensors: Diagnose sensors and determine whether or not a replacement is needed
- Also captures sensor data and displays PSI, ID, temperature and battery status
- Print Sensor Information: Allows user to print sensor information using WebTPM software (included) and PC
- Relearn TPM Vehicle Systems: Provides vehicle-specific reset procedures when vehicle tires have been rotated
- Sensor Replacements: Features vehicle-specific prompts that guide the TPM system relearn following sensor replacement
- Tire Rotations: Provides quick registration of new sensor locations after tire rotation
- Tests key FOBs for proper signal strength and battery condition
- Includes replacement TPM sensor part number lookup for OEM and aftermarket sensors
- Complete with docking/charging station
- Built-in Lithium Ion rechargeable battery

Software Updates

- TPMS3 includes webTPM portal that installs on PC or laptop and administers software updates
- Registration of tool through webTPM provides 12 months of access to new software updates as they become available
- After the first 12 months, TPMS3U update will allow software updates and additional 12-month time period
- Additional functionality of webTPM includes Print Sensor Information and the ability to add optional software such as TPMS3PRG Programmable Sensor add-on pack
- Technical Support US and Canada (English): 844-349-8767; Canada (French): 855-455-8767



TPMS3BOX

TPMS3BOX TPMS Sensor Bench Tester

- Tests TPMS sensors without having to mount in a tire/wheel assembly
- Pressurizes sensor to simulate actual conditions
- Used with Tire Pressure Monitoring System Tools
- Saves time in mounting/dismounting tire



TPMS3U



TPMS3PRG

TPMS3U TPMS3 Software Update

- Up to and including the current model year vehicle coverage: sensor testing, relearn procedures and ECU sensor ID registration
- Troubleshooter menu option assists technician diagnosing the TPM system
- Improved menu navigation with guided symptom-based TPM sensor tests and system relearn procedure
- Added ECU unlock for Toyota®, Lexus® and Scion® vehicles that have a TPMS dash-reset button
- Part number lookup for OEM and aftermarket sensors
- Software purchase allows user to access new updates for a period of 12 months

TPMS3PRG Programmable Sensor Add-on Package

- Use the TPMS3 to program aftermarket tire pressure sensors
- Replace a sensor with low battery life or one that is non-functioning
- Reduce sensor inventory costs - one sensor covers multiple vehicle applications
- Use to install a duplicate set of sensors in a summer/winter set of tires
- Kit consists of a 2GB Micro SD card along with registration certificate
- Registration certificate contains a code that is entered into webTPM and allows access to sensor programming functionality
- Requires TPMS3 software version CS2-02 or newer to install TPMS3PRG
- TPMS3PRG is a one-time activation to program aftermarket TPM sensors
- The TPMS3PRG with the following aftermarket programmable sensors: Alligator® sens.it®, BWD® Standard® QWIK-SENSOR™, Dorman® DIRECT-FIT, EZ-sensor®, Dynamic™ DVT Pro Select™, Hamaton® UPro, Huf® IntelliSens®, NAPA® Echlin® QWIK-SENSOR™, Orange SIMPLE SENSOR® and Steelman® Select Sensor

TPMS Tools

QDTPMS Valve Core Torque Tool

- Specifically designed to be used as a core remover and precise installer for TPMS tire valve to eliminate risk of damaging expensive TPMS sensors
- Preset to 4 in-lb to prevent over- or under-torquing
- Preset torque setting also helps prevent valve core leaks that lead to low tire pressure and TPMS alerts

QDTPMS35 TPMS Adjustable Torque Screwdriver

VSC4KT 4 pc TPMS Valve Stem Cap Set (Blue-Point®)

- Quickly evacuate air without removing valve cores
- Replace a standard sized valve cap with this tool, will depress the valve stem for rapid deflation
- Return your wheels to the original position without resetting the TPMS
- Caps are clearly marked for easy identification for the reinstall
- Blue anodizing makes caps easily visible on most rims or tires
- Knurling provides sure grip even in greasy situations
- Back side of the tool allows for valve cap storage while the tools are in use
- Vinyl holder included to keep valve stem caps together when not in use
- Includes (4) valve stem caps

S61112 1/4" Drive 6-Point Metric 11 and 12 mm TPMS Flip Socket

- Manufactured from special alloy steel, precision forged and heat-treated for optimum strength and durability
- Requires use with a 1/4" drive extension
- Used to remove and install clamp-in style TPMS sensors – combined with a torque wrench, this socket allows the technician to precisely install clamp-in style TPMS sensors

Valve and Stem

SDMV208 Tire Valve Bit

- Designed for use with all Snap-on® ratcheting screwdrivers
- Similar to what is covered by the TR107A, TR108, TR1170 screwdrivers
- 1/4" Hex insert bit, 1" length



QDTPMS



VSC4KT



S61112



SDMV208

TIRE AND WHEEL: TIRE PRESSURE GAUGES

Dial Type Pressure Gauges

TPRG60 TPMS/Racing Tire Gauge (Blue-Point®)

- Ideal for applications requiring precise readings like TPMS gauge testing and performance driving
- PowerFlex® movement is both durable and accurate
- ±1% accuracy

TPG15 Low-Pressure Tire Gauge (Blue-Point®)

- Low pressure gauge for ATVs, lawnmowers, motorcycle fork tubes and more
- Unique design offers superior shock resistance: movement from socket is isolated, reducing effects of shock
- Silicone dampened gears and enhanced vibration dampening design cushion movement for extended gauge service
- Clear and concise, easy-to-read 1–15 PSI gauge displays in 1/4 PSI increments
- ±1% accuracy

PG160 Dial Type Pressure Gauge (Blue-Point®)

- Calibrated in 2 PSI increments from 10–160 PSI
- 2-1/2" diameter dial gauge with shock-resistant gauge movement
- 12" flex hard-to-reach valves (16" with chuck)
- Bleeder valve to relieve excess pressure to achieve proper inflation
- Dual foot chuck 1% accuracy

PG60 Dial Type Pressure Gauge (Blue-Point®)

- 12" flex hose and bleeder valve
- 1% accuracy
- Swivel angle chuck
- Dual scale pressure range 60 PSI, 410 kPa
- Ideal for automobile and light truck service



TPRG60



TPG15



PG160

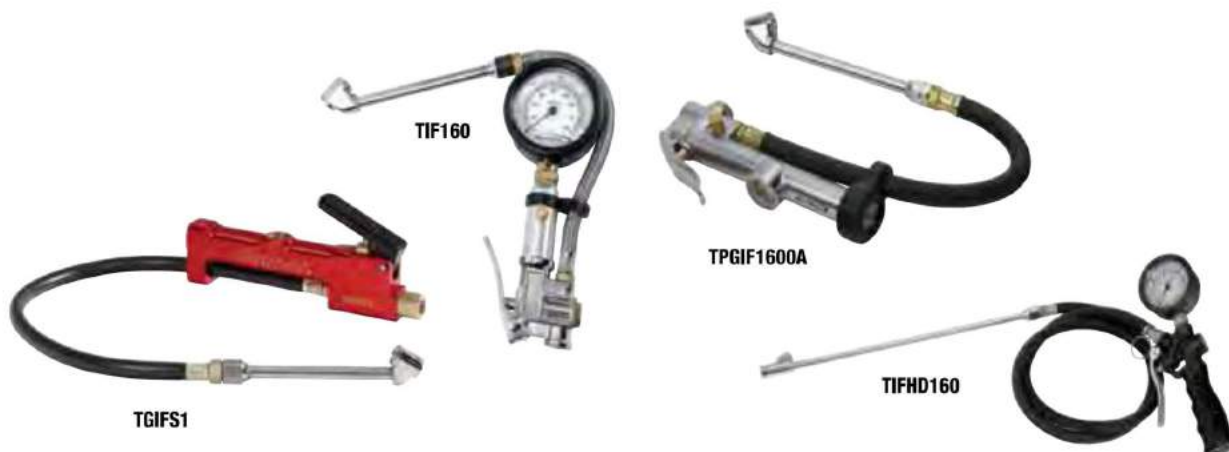


PG60



- Do not exceed rated pressure
- Read safety precautions on pages W1 to W4

TIRE AND WHEEL: TIRE PRESSURE GAUGES



Inflators

TGIFS1 20–160 PSI Tire Gauge Inflator

- Snap-on® exclusive design
- Heavy duty billet-machined aluminum body for durability
- Dual swivel point hose for ease of use/accessing tight areas
- 20–160 PSI range
- Modular design for easy replacement of worn parts
- Double sealed scale avoids contamination from air supply
- ±1% accuracy

TIF160 Tire Pressure Gauge/Inflator (Blue-Point®)

- 1% accuracy allows for use on vehicles equipped with TPMS sensors
- Shorter hose and body length make this gauge ideal for use on cars and light trucks
- Rugged dial and plunger style mechanism preserve gauge accuracy when dropped
- Stainless-steel braided hose
- 6–160 PSI (60–1100 kPa)
- Lifetime warranty

TPGIF1600A Tire Gauge and Inflator (Blue-Point®)

- 10–120 PSI in 2 lb increments
- 1/4" FNPT air inlet fitting
- Swiveling hose for easy gauge positioning
- Zinc body with heavy duty brass valves
- Easy-to-read sight glass featuring PSI and kPa readings
- ±1% accuracy

TIFHD160 Truck Tire Inflator (Blue-Point®)

- Inflate heavy-duty truck tires quickly and safely
- Gauge measures from 6–160 PSI (40–1100 kPa)
- Includes 14" dual foot budd chuck with locking threads
- High quality 48" extended rubber hose (tested to 300 PSI)
- 1/4" NPT Brass fitting for inlet air connection
- 360° swiveling gauge for easy reading
- Rubber gauge guard for added shock resistance
- Rugged geared gauge construction (not bourdon tube like most dial gauges) for added durability
- 48" hose and chuck allow a tire technician to stand outside of the trajectory zone as noted in OSHA1910.177 standards, servicing multipiece and single piece rim wheels
- This standard requires a sufficient length of hose exist between the chuck and valve

TPGDL1000C Digital Inflator with Coated Hose

- Reads in 0.1 PSI increments, range of 5–150psi
- Comes with coated, stainless steel hose
- Back-lit display, with PSI, kPa, bar and kg/m²
- Dual foot and clip-on chuck included with 1/4" threads for easy use with any open chuck
- 1/4" NPT air inlet fitting
- Rubber body prevents damage when dropped



TPGD150



TPGDL150

Digital Tire Pressure Gauges

TPGD150 Digital Tire Pressure Gauge (Blue-Point®)

- Ranges from 5–150 PSI in 0.5 increments
- Flexible 11" braided hose with dual foot chuck helps access hard-to-reach tire valves
- Black ribbed gauge guard provides a sure gripping surface and helps protect the gauge if dropped
- Auto shutoff extends battery life
- 1% accuracy

TPGDL150 Digital Tire Pressure Gauge (Blue-Point®)

- Backlit for easier measurement reading
- Auto shutoff extends battery life
- 5–150 PSI reading
- Shockproof rubber guard to prevent damage when dropped
- Molded finger grips for added comfort
- Heavy die cast faceplate
- Includes steel belt clip and batteries
- ±1% accuracy



Pencil Tire Pressure Gauges

PGP20 Tire Pressure Pencil Gauge (Blue-Point®)

- 20 PSI pencil gauge for low pressure applications
- 0.5 PSI accuracy for the full range of scale
- Laser engraved barrel
- Full metal body construction
- Pocket clip holds gauge securely in pocket
- Ideal for ATVs and riding mowers

PGPS50GB Master's Choice Pencil Tire Gauge in Solid Maple Box

- Durable brass construction promotes longevity and resists corrosion
- $\pm 1\%$ accuracy exceeds ANSI® standards and allows for use on vehicles with TPMS sensors
- Dual scale measures from 5–50 PSI and from 34.4 kPa–344.7 kPa
- The solid maple box protects and showcases this high quality gauge

PGPS50 Master's Choice Tire Pressure Pencil Gauge

- Tire pressure gauge only
- $\pm 1\%$ accuracy exceeds ANSI® standards and allows for use on vehicles with TPMS sensors
- Dual scale measures from 5 PSI to 50 PSI and from 34.4 kPa to 344.7 kPa

PGPS50-BOX Master's Choice Box (Solid Maple)

- Wooden box only



TGS1 Sight Glass Test Gauge

- Gauge is accurate enough to use for TPMS applications
- Rugged sight glass design for better durability and readability
- 1% Master Gauge Accuracy, with certificate of accuracy included
- Durable billet machined 6061-T6 aluminum body
- Dual Foot Budd Chuck
- 10–160 PSI
- Unique comfort grip for easy use
- Can be calibrated in the field (instruction included)

PGP120 Pressure Gauge (Blue-Point®)

- Calibrated in 2 PSI increments from 10–120 PSI and in 10 kPa increments from 100–800 kPa
- Chrome body
- 1% gauge accuracy
- 5-3/4" long

PGP45LQ Air Liquid Pressure Gauge (Blue-Point®)

- Calibrated in 1 PSI increments from 5–45 PSI

- Can be used on any standard or liquid solution-filled tires
- Spring retracts into gauge, causing pump action to expel tire liquid
- Chrome body
- 1% gauge accuracy
- 5-15/16" long

PGP50 Pencil Tire Pressure Gauge (Blue-Point®)

- Calibrated in 1 PSI increments from 5–50 PSI and 5 kPa increments from 50–350 kPa
- Chrome body
- 1% gauge accuracy
- 5-3/4" long

PGPL150 Pencil Tire Pressure Gauge (Blue-Point®)

- Calibrated in 2 PSI increments from 10–150 PSI
- Straight dual foot is well suited for Budd style truck tires
- 30° angle reverse foot assists in hard-to-reach areas
- Includes hanging clip
- Chrome body
- 1% gauge accuracy
- 12" long

AIR CHUCKS



Closed Air Chucks

GA356B Dual Foot Air Chuck (Blue-Point®)

- 1/4"-18 female NPT with 5/8" hex nut
- Straight foot works well on Budd style wheel rims
- 30° angle reverse foot is helpful in limited access situations
- 6-1/2" long

GA460B Dual Foot Air Chuck (Blue-Point®)

- 1/4"-18 female NPT
- 6-1/8" long
- Maximum rating is 150 PSI
- For use with air lines only, do not use on inflators

GA296B Angled Air Chuck (Blue-Point®)

- 1/4"-18 female NPT
- Rubber gasket included
- Maximum rating is 150 PSI
- For use with air lines only, do not use on inflators

GA358B Instinct® Handle Air Chuck

- Features comfortable Instinct® screwdriver-style handle
- Thread size of 1/4" NPT
- Overall length of 7"
- Maximum rating is 150 PSI
- FOR USE WITH AIR LINES ONLY – DO NOT USE ON INFLATORS

GA359B Instinct® Handle Air Chuck Dual Foot

- Features comfortable Instinct® soft-grip screwdriver handle
- Dual-foot chuck easily accesses hard to reach inner tandem wheels
- 30° reverse angle chuck can be used on outside tires
- Thread size of 1/4" MNPT
- Overall length of 12"

YA173B Clip-on Style Angled Air Chuck (Blue-Point®)

- 1/4"-18 female NPT
- Spring loaded, trigger operated valve stem clip
- Maximum operating pressure is 200 PSI
- For use with air lines only – do not use on inflators

TPDF14A Long Reach Dual Foot Air Chuck (Blue-Point®)

- 14" Long reach dual chuck
- Straight on chuck with 30° reverse chuck
- All metal components
- Work well for reaching dual wheel truck tires
- Compatible with Snap-on® and Blue-Point® inflators



- Do not exceed rated pressure
- Read safety precautions on pages W1 to W4

AIR CHUCKS



GAOC356



GAOC460



TPDFOC14



TPLOC2

Open Air Chucks

GAOC356 Dual Foot Air Chuck (Blue-Point®)

- 1/4"-18 female NPT with 5/8" hex nut
- Straight foot works well on Budd style wheel rims
- 30° angle reverse foot is helpful in limited access situations
- 6-1/2" long

GAOC460 Dual Foot Air Chuck (Blue-Point®)

- 1/4"-18 female NPT
- 6-1/8" long

TPDFOC14 Long Reach Dual Foot Air Chuck (Blue-Point®)

- 14" Long reach dual chuck
- Straight on chuck with 30° reverse chuck
- All metal components
- Work well for reaching dual wheel truck tires
- Compatible with Snap-on® and Blue-Point® inflators

TPLOC2 Heavy Duty Air Chuck (Blue-Point®)

- 1/4" NPT Open style air chuck
- Heavy duty coupling style teeth for a secure lock on all tire valves
- Full metal one piece construction for added durability
- Secure connection to all standard sized Schrader® valves found on cars, trucks, motorcycles, RV's, and light duty tractors
- For use on tire inflators

VALVE TOOLS



TR107A



TR108



TR109



TR1170



VT14



GA143C



VT1B

Valve and Stem

TR107A Tire Valve Tool with Black Handle

TR107AG Green, TR107AO Orange, TR107AR Red

- Designed to install and remove standard tire valve cores
- Larger screwdriver style handle
- Comfortable, durable acetate handle
- 6-1/4" long

TR108 Tire Valve Core Tool

- Designed to install and remove standard tire valve cores
- Larger screwdriver style handle
- Comfortable, durable acetate handle
- 4-3/4" long

TR109 Valve Core Tool

- Use to remove or replace valve cores on A/C systems (large bore)
- 6-3/4" long

TR1170 Valve Core Remover/Installer Tool

- Designed to install and remove standard tire valve cores
- 6-1/4" long

VT14 Universal Valve Core Tool (Blue-Point®)

- Double-ended bit removes and installs large and small valve cores
- Reverse the double-ended wrench in the tool body to fit both large and small valve cores
- Use the cup end to remove valve caps

GA143C Valve Core and Stem Tool (Blue-Point®)

- Four-function tool inserts and removes cores, taps inner stem threads and chases outer threads
- 1-7/8 x 13/16"

VT1B Valve Stem Puller

- Vinyl spacer protects rims
- Simplify inserting any tubeless tire valve
- Swivel head screws onto cap thread of tire valve
- Handle is used as a lever to pull tire valve into rim hole



TDG1



TDG2

Tread Depth Gauge

TDG1 Tread Depth Gauge (Blue-Point®)

- Sliding gauge is colored coded to more easily identify when it is time for a new tire
- Measures to a depth of 1" in 1/32" increments
- Plastic body with aluminum probe and sliding gauge
- Includes pocket clip

TDG2 Dial Type Tread Depth Gauge

- Oversized dial allows for much easier reading than stick type tread depth gauges
- Geared interior movement for increased ruggedness
- Reads in 1/32" increments and has a color coded dial design

Torque Sticks/Standard Duty

- Strobe marks stop turning at precisely the right torque
- Engineered for rugged professional environments
- Manufactured with heat treated Swedish spring steel in a solid one piece design
- Sticks are individually packaged
- Sets come with a color coded torque chart showing the correct stick for nearly every foreign and U.S. vehicle
- Lifetime guarantee

Stock No.	Size, mm	Color	Torque Limit, ft-lb	Drive Size, inches	Set Contains:		
					BTQS1000	BTQS600	BTQS500
BTQS12A	21	Brown	100	1/2	•		
BTQS12AA	22	Orange	75	1/2		•	
BTQS12B	21	Light Brown	80	1/2	•		•
BTQS12BB	21	Charcoal	147	1/2	•		•
BTQS12C	19	Gray	100	1/2	•		•
BTQS12D	21	Black	60	1/2			
BTQS12E	19	Blue	80	1/2	•		
BTQS12EE	22	Turquoise	140	1/2	•		•
BTQS12F	19	Yellow	65	1/2			•
BTQS12G	17	Red	80	1/2		•	
BTQS12H	17	Green	55	1/2			•
BTQS12HH	22	Medium Brown	110	1/2			
BTQS12I	22	White	120	1/2	•		•
BTQS12K	17	Light Yellow	113	1/2		•	
BTQS12KK	21	Red-Orange	110	1/2			
BTQS12MM	17	Off-White	90	1/2		•	
BTQS12NN	19	Light Tan	90	1/2			
BTQS12OO	19	Quartz	120	1/2			
BTQS12T	24	Light Green	140	1/2	•		
BTQS12UU	14	Mud	80	1/2			
BTQS12XX	21	Light Purple	160	1/2	•		
BTQS12Y	22	Light Blue	100	1/2	•		



BTQS1000



BTQS500



BTQS600

BTQSWC13 Wall Chart

- Color wall chart for service bays

Sets shown include storage case

Torque Sticks/Heavy Duty

Stock No.	Size, inches (mm)	Color	Torque Limit, ft-lb	Drive Size, inches	Set Contains:	
					BTQSHD400	
BTQSHD34114	1-1/4 (31.7)	Red	250	3/4		
BTQSHD3433M	1-19/64 (33)	Brown	475	3/4		
BTQSHD1114	1-1/4 (31.7)	Red	250	1	•	
BTQSHD133M	1-19/64 (33)	Brown	475	1	•	
BTQSHD1112	1-1/2 (38)	Black	475	1	•	
BTQSHD11316	13/16 (21)	Yellow	475	1	•	

Set shown includes storage case



BTQSHD400



TUAM4E

Torque Sticks/Special Application

Stock No.	Size, mm	Color	Torque Limit, ft-lb	Set Contains:	
				TSS2KT	
TSS2TT	22	Pink	150	•	
TSS2QQ	22	Salmon	95	•	



TSS2KT

Hex/Stubby Universal, mm, chrome (1/4")

TUAM4E 1/4" Drive 4 mm Stubby Flex Hex Bit Socket

- Manufactured from special alloy steel
- Precision machined and heat treated for optimum strength and durability
- Nickel Chrome finish helps protect against corrosion and makes it easy to wipe clean

Torque Extensions

- Help eliminate over-torqued lug nuts, broken or damaged studs and distortion of rotors, drums and wheels
- Color coded low friction sleeve for quick reference
- Cold formed special alloy steel for greater accuracy and strength
- 1/2" male and female square drive for use with appropriate impact socket
- Female square drive designed for improved retention on impact wrenches
- Male square drive has friction ring for secure socket retention



305TSKTA

Stock No.	Color	Torque Limit, ft-lb	Set Contains:	
			305TSKTA	
TSKT65A	Yellow	65	•	
TSKT80A	Blue	80	•	
TSKT100A	Gray	100	•	
TSKT120A	White	120	•	
TSKT140A	Teal	140	•	

Set shown includes storage case



- Read and follow all safety messages in instructions
- Check final torque on lug nuts with a torque wrench
- Read safety precautions on pages W1 to W4

TIRE AND WHEEL: LUG/RETAINING NUT SOCKETS



Lug Nut Sockets

LSR1500 Standard/Twist Wheel Flip Socket Set (Blue-Point®)

- Five sockets for use on the most popular lug nut sizes (17 mm, 19 mm, 3/4", 21 mm, 13/16" and 7/8")
- Six-point Flank Drive® wrenching system at one end and a six fluted twist socket for removal of damaged wheel lugs at the other end
- Flip the socket when encountering a damaged head
- Knurling identifies twist socket end
- Sockets and 3-1/2" extension are all 1/2" drive for use with hand drivers or impact wrenches
- Black oxide finish
- Includes storage case



LSR1500

LSR2000 3 pc 1/2" Square Drive**Thinwall Wheel Flip Socket Set (Blue-Point®)**

- Covers the four most popular lug nut sizes (3/4 and 13/16", 19 and 21 mm)
- Flank Drive® wrenching configuration
- 1/2" square drive located at center of socket
- Use with hand driver or impact wrench
- Includes (2) lug nut sockets and 3-1/2" extension
- Black industrial finish
- Includes storage case



LSR2000

LSR2000PLUS 3 pc 1/2" Square Drive Lug Nut Flip Socket Set (Blue-Point®)

- Includes (3) lug nut flip sockets (3/4 and 13/16", (7/8 and 15/16") and (19 and 21 mm)
- All sockets are 3" long
- 1/2" square drive located at center of socket
- Use with hand driver or impact wrench
- Includes storage case
- Black industrial finish on all components
- Requires use of optional LSR1000EXT extension (not included)



LSR2000PLUS

LSR1150 1/2" Square Drive SAE 3/4 and 13/16" Thinwall Wheel Flip Socket (Blue-Point®)

- Thinwall wheel flip socket covers 3/4 and 13/16" wheel lug sizes
- Use with hand driver or impact wrench
- 3" long



LSR1150

LSR1250 1/2" Square Drive Metric 19 and 21 mm Thinwall Wheel Flip Socket (Blue-Point®)

- Thinwall wheel flip socket covers 19 and 21 mm wheel lug sizes
- Use with hand driver or impact wrench
- 3" long



LSR1250

LSR2500 Lug/Lock Flip Twist Socket Set (Blue-Point®)

- Quickly and easily remove damaged wheel lugs (six flute end) or damaged wheel locks with damaged or lost keys (12 flute end)
- 1/2" square drive located at center of socket
- Use with hand driver or impact wrench
- Includes LSR2501 and LSR2502 lug/lock sockets and 3-1/2" extension in a custom case
- Black industrial finish



LSR2500

LSR2501 Lug/Lock Flip Twist Socket (Blue-Point®)

- 3/4" 19 mm twist socket quickly and easily removes damaged wheel lugs (six flute end) or damaged wheel locks with damaged or lost keys (12 flute end)
- Use with hand driver or impact wrench
- Black industrial finish: 2-5/8" long

LSR2502 Lug/Lock Flip Twist Socket (Blue-Point®)

- Same as LSR2501 except in 7/8" size

LSR2503 Lug/Lock Flip Twist Socket (Blue-Point®)

- Same as LSR2501 except in 17 mm size



LSR2503

LSR2500PLUS 3 pc 1/2" Square Drive Lug/Lock Flip Twist Socket Set (Blue-Point®)

- Quickly and easily remove damaged wheel lugs (six flute end) or damaged wheel locks with damaged or lost keys (12 flute end)
- 1/2" square drive located at center of socket
- Use with hand driver or impact wrench
- Includes (3) lug/lock sockets
- Black industrial finish
- LSR1000EXT is optional 3" extension for the set
- Includes storage case



LSR2500PLUS

LSR1450 Thinwall Wheel Flip Socket (Blue-Point®)

- Covers 17 mm and 19 mm wheel lug sizes
- Flank Drive® wrenching configuration
- 1/2" square drive located at center of socket (requires optional extension LSR1000EXT)
- Ideal companion to LSR2000 and LSR2000PLUS
- Black industrial finish
- Major O.D.: 1.03" (26.3 mm)
- Minor O.D.: 0.94" (23.9 mm)
- Length: 3" (76.2 mm)



LSR1450

LSR1580 1/2" Square Drive Metric 21 and 22 mm Thinwall Wheel Flip Socket (Blue-Point®)

- Thinwall wheel flip socket covers 21 and 22 mm wheel lug sizes
- Use with hand driver or impact wrench
- Requires use of optional LSR1000EXT extension
- 3" long



LSR1580

LSRM2000 Metric Flip Socket Set (Blue-Point®)

- Includes LSR1580 and LSR1450 sockets plus LSR1000-EXT 3" extension
- Designed for 2005 and later vehicles
- Includes 17 mm, 19 mm, 21 mm and 22 mm sizes
- Applications: Dodge® Pickup 1500, Dodge® SRT-10, Honda® Odyssey®, Land Rover® L3, Range Rover® and Sport, Lexus® LX470 and Toyota® Land Cruiser® vehicles



LSRM2000

LSR1560 Flip Socket (Blue-Point®)

- 7/8" and 1" socket size: 3" long
- Use with hand driver or impact wrench
- Expands LSR2000 and LSR2000PLUS sets
- Requires use of LSR1000EXT extension (not included)
- 1/2" square drive located at center of socket
- Applications: (7/8") Chevy®, GMC® vans, Dodge® 1500 Ram® Pickup, Ford® E250/350, Ford® Super-Duty, Hummer® H1, Lincoln® Blackwood®, Lexus® LX470, Toyota® Land Cruiser, Jaguar® XJ Series, (7/8 and 1") Chevy/GMC Pickups and SUVs, (1") Plymouth® 1 ton vans



LSR1560

LSR1570 Flip Socket (Blue-Point®)

- 15/16 and 1-1/16" socket size: 3" long
- Use with hand driver or impact wrench
- Expands LSR2000 and LSR2000PLUS sets
- Requires use of optional LSR1000EXT extension
- 1/2" square drive located at center of socket
- Applications: (15/16") Dodge® Ram® 2500, 3500, (1-1/16") Land Rover®, Range Rover® Discovery II, Ford® E300/350, Ford® F300/350



LSR1570



Lug Nut Sockets

SLSM1922 1/2" Drive 19/22 mm Impact Flip Socket

- Manufactured from special steel with higher alloy content
- Precision-machined and heat-treated for optimum strength and durability
- 1/2" drive socket employs Flank Drive® technology with single hex design on both ends
- Industrial finish helps protect against corrosion

DW402C 3/4" Drive 6-Point SAE 1-1/4" Dayton Lug Nut Impact Socket

- Use with socket retainers

2003LN 3 pc 1/2" Drive Double-Ended Lug Nut Socket Set

- Includes (2) double ended lug nut sockets and 3" extension bar

A98A 1/2" Square Drive 6-Point SAE Lug Nut Socket

- 1/2" square drive is recessed between (two) six-point wrench openings: 3/4" and 13/16"
- Length 2-3/4", diameter 13/16"

A98M 1/2" Square Drive 6 Point Metric Lug Nut Socket

- 1/2" square drive is recessed between (2) six-point wrench openings: 19 and 21 mm
- Length 2-3/4", diameter is 13/16"

IMX32B 1/2" Drive 3" Snap Ring Impact Extension

- Snap-on® impact extensions are heat-treated to optimize impact service life with a lower hardness and able to withstand repeated cycling loads of impact wrenches
- Snap-on® uses a proprietary blend of special alloy steel that provides long life and great strength

TSR500 Lug Nut Remover Socket (Blue-Point®)

- Use on late model OEM and aftermarket lug nuts
- Dual sided design allows use on 3/4", 13/16", 19 mm and 21 mm lug nuts
- Use with 1/2" drive impact wrench
- Fluted socket design helps remove most stubborn lug nuts
- Includes extractor punch

TSR600 Locking Lug Nut Socket (Blue-Point®)

- 1/2" square drive is located in the center of the socket
- Use included pin to dislodge lug nut if wedged in socket
- Removes most locking lug nuts and has two-in-one flip socket design
- For use with impact wrench
- Fluted for extra grip

TSR700 Lug Nut Remover Socket (Blue-Point®)

- Use on late model OEM and aftermarket lug nuts
- Dual sided design allows use on 7/8", 1", 22 mm and 25 mm lug nuts
- Use with 1/2" drive impact wrench

- Six flute socket design helps remove most stubborn hex lug nuts

TSR800 Lug Nut Remover Socket (Blue-Point®)

- Use on late model OEM and aftermarket lug nuts
- Dual sided design allows use on 7/8", 1", 22 mm and 25 mm lug nuts
- Use with 1/2" drive impact wrench
- Six flute socket design helps remove most stubborn hex lug nuts

TSR1000 Lug Nut Socket Set (Blue-Point®)

- Set includes TSR500 and TSR600 lug nut sockets plus YA1005-7 extractor punch
- Use TSR500 on late model OEM and aftermarket lug nuts
- Dual-sided design allows use on 3/4", 13/16", 19 mm and 21 mm lug nuts
- TSR600 removes most locking lug nuts and has a two-in-one flip socket design
- For use with 1/2" drive tools
- Fluted socket design provides extra grip

TSR1240 Lug Nut Removal Socket (Blue-Point®)

- 21 mm/21.5 mm socket, use for Chrysler® and Dodge® applications

TSR1250 Lug Nut Removal Socket (Blue-Point®)

- Dual flip 1/2" drive impact socket design
- Removes lug nuts with missing or distorted caps
- 19.5 mm side fits distorted 19 mm chrome caps found on many GM® and Chrysler® vehicles
- 18.5 mm side fits rusted lug nuts missing chrome covers

TSR1260 1/2" Drive Metric 22 and 22.5 mm Dual Flip Lug Nut Removal Impact Socket (Blue-Point®)

- Works great on lugs that are rusted or have missing caps
- Use for Dodge® 16-17" aluminum wheels

TSR1270 Lug Nut Removal Socket (Blue-Point®)

- 1-1/16"/27.5 mm socket, use for Range Rover® and Land Rover® applications

TSR1230 Lug Nut Removal Socket Set (Blue-Point®)

- Set includes TSR1240, TSR1250, TSR1260 and TSR1270 Dual Flip sockets plus YA1005-7 Extractor Punch in custom vinyl bag
- Works great on lugs that are rusted, have missing caps or are missing caps altogether

YA1005C Locking Lug Nut Remover Kit (Blue-Point®)

- Removes locking lug nuts and locking hubcaps on most vehicles including the new Chrysler® hubcap locks
- Updated set includes new turbo lug nut socket to easily remove damaged 3/4", 13/16", 19 and 21 mm lug nuts
- Tapered swirl in socket bites into damaged lug nut for quick removal
- Intended for hand use only, except for turbo lug nut socket, which should be used with an impact wrench



• Read safety precautions on pages W1 to W4

TIRE AND WHEEL: LUG/RETAINING NUT SOCKETS

Lug Nut Sockets (3/8" drive)



203FLSM

Stock No.	Square Drive, inches	Wrench Size, mm	Overall Length, inches
FLS2426	3/8	3/4 and 13/16	3
FLSM1719	3/8	17 and 19	3
FLSM2122	3/8	21 and 22	3

203FLSM 3 pc 3/8" Drive Lug Nut Socket Set

- Includes FLSM1719 (17/19 mm) and FLSM2122 (21/22 mm) Metric Flip Lug Nut Sockets plus IMX31 Impact Extension

SIMML210 Lug Nut Socket

- Long socket designed to fit lug nut applications where an extension would be needed
- Flank Drive® wrenching configuration where the socket grips the fastener on the flanks/flats increasing torque by up to 15%-20%
- Forged from tough alloy steel to increase safety, impact sockets are heat treated to a lower hardness to add impact resistance and ductility
- One-piece design



SIMML210

Lug Nut Sockets (Magazine Loading)

- Allow easy multiple lug nut removal up to 5 lug nuts at a time
- Eliminates rolling or lost lug nuts and wasted motion
- Ideal for use in tire and brake shops
- Adjust type 9,12 and 16 cu in air chambers that are equipped with 1/2 to 20" threaded rod and 3/4" nut



LMS24

Stock No.	Wrench Size	Square Drive, inches	Outside Dia., inches	Overall Length, inches
LMS24	3/4" (19 mm)	1/2	1	5-5/16

Wheel Lock Sockets

LSR1000A Wheel Lock Removal Socket Set (Blue-Point®)

- Easily removes most lug nuts and wheel locks on most US and import passenger vehicles and light trucks
- Use with hand driver or impact wrench
- Some sockets cover specific GM®, Ford® and Chrysler® applications
- Set includes 11 sockets, extension and extractor punch in storage case



LSR1000A

Torque Wrenches

BRUTUS3R300 1/2" Drive Heavy Duty Torque Wrench

- Expanded range allows extended coverage with 1/2" drive tool servicing a majority of vehicles and large pick-ups
- Gives user additional range in applying torque and needing angle on high torque applications
- Roll-stamped tube: stamped scale (ft-lb) offers better permanency and visibility in increments of 2 ft-lb
- Features heavy duty components; thicker diameter main tube, cam and internal components for strength and durability
- Overall length is 32-1/2" L (previous model 28" L), accuracy is ± 6% CW and CCW



BRUTUS3R300



WHV1



WHM1



WHS1



WHB1

Wheel Hangers

Allow faster, safer and easier balancing of wheels when attempting to insert and tighten wheel bolts.

Set Contains: WHS4

Stock No.	Thread Size	Hex Size, mm	Applications	
WHM1	M12 x 1.5	10	Mercedes-Benz®, BMW®, MINI®, Cadillac® Catera, Chrysler® Crossfire	•
WHS1	M14 x 1.5	15	Current Mercedes-Benz®, current Dodge® Sprinter® trucks, Freightliner® Sprinter® trucks from 2002-2004	
WHV1	M14 x 1.5	10	Volkswagen®, Audi®, Mercedes-Benz® ML Class, BMW® 7 and X5 Series, Porsche®	•
WHB1	M14 x 1.25	10	2009-current BMW® and Mini® vehicles	•
WHD1	M12 x 1.25	10	Applications include 2012-2014 Dodge® Dart®, 2015 Chrysler® 200®, and 2014 Jeep® Cherokee® vehicles	•
WHM2	M12 x 1.5	10	Mercedes-Benz®, BMW®	
WHS2	M14 x 1.5	15	Dodge® Sprinter®, Freightliner®	
WHV2	M14 x 1.5	10	VW®/Audi®	
WHP1	M16 x 1.5	15	RAM Promaster Vehicles	



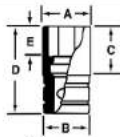
Deep, mm

305SIMMY

Set Contains:

305SIMMY

Stock No.	Size, mm	A	B	C	D	E	
SIMM290	29	41.3	41.3	71.6	88.9	21.3	•
SIMM300	30	42.9	42.9	71.6	88.9	21.6	•
SIMM340	34	49.3	49.3	72.8	88.9	22.6	•
SIMM350	35	50.8	50.8	72.8	88.9	22.9	•
SIMM360	36	50.8	50.8	72.8	88.9	22.9	•



1/2" Square Drive

Use with a torque wrench to service truck wheel bearing lock nuts.



ANS1938

Stock No.	Nominal Size	Style
ANS1937*	2-1/2"	6-point
ANS1938	2-3/4"	6-point
ANS1939*	2-3/8"	6-point

*Fits special "rounded" hex nuts on Dana® axles of some Ford® trucks.

3/4" Square Drive

Stock No.	Nominal Size	Style
ANS1900B	2-1/8" (54 mm)	6-point
ANS1933A**	59 mm	6-point
ANS1901A	2-3/32"	6-point
ANS1920A	2-1/4"	6-point
ANS1902A	2-3/8"	6-point
ANS1903A	2-3/8"	8-point
ANS1921A	2-1/2"	6-point
ANS1928A*	2-9/16"	6-point
ANS1905A	2-9/16"	8-point
ANS1904A	2-9/16"	6-point
ANS1922A	2-5/8"	6-point
ANS1923A	2-3/4"	6-point
ANS1924A	2-3/4"	8-point
ANS1926A	2-13/16"	8-point
ANS1932A	2-7/8"	6-point
ANS1906A	3"	6-point
ANS1907A	3"	8-point

Stock No.	Nominal Size	Style
ANS1908A	3-1/4"	6-point
ANS1909A	3-1/4"	8-point
ANS1910A	3-1/2"	6-point
ANS1911A	3-1/2"	8-point
ANS1925A	3-3/4"	8-point
ANS1927A	3-13/16"	8-point
ANS1912A	3-7/8"	6-point
ANS1913A	3-7/8"	8-point
ANS1914A	4"	6-point
ANS1915A	4-1/8"	6-point
ANS1916A	4-3/8"	6-point
ANS1917A	4-3/8"	8-point
ANS1918A	4-7/8"	6-point
ANS1919A	4-7/8"	8-point

*Fits special "rounded" hex nuts on Dana axles of some Ford trucks.

**For 1/2 ton vehicles with automatic locking nuts. Designed for late model Ford vehicles. 3/4" square drive, 59 mm nominal size. Industrial finish.



ANS1900B



ANS1933A



S8695C



S6109A



S6146

Retaining Nut Sockets

S8695C Axle Nut Socket 4 Lug

- 1/2" square drive: 3-3/4" long
- For 1/2 ton vehicles with manual locking nuts
- Use on front wheel bearing retaining nut on Dana® 44 Series Axle used on 1959 and later GM®, Ford®, Dodge® and AMC®
- Industrial finish
- Railroad applications: use to install or remove point detector bushing found on WABCO-M23B switch machines

S6146 1/2" Square Drive Axle Nut Socket Four Lug

- Use for front wheel bearing retaining nut on 3/4-ton vehicles with Dana® 60 series axle used on GM®, Ford® and Dodge® trucks
- 3-3/4" long
- Industrial finish

S6109A Axle Nut Socket 6 Lug

- For front wheel bearing retaining nut on 3/4 ton vehicles with heavy duty suspension
- Designed for use on GM®, Ford® and Dodge® trucks with Dana® 70 Series axle
- 1/2" square drive: 3-3/4" long
- Industrial finish

SPANNER SOCKETS

Spanner Sockets

For use with a torque wrench when servicing Chevrolet®, GM® and Ford® axles

Stock No.	Square Drive, inches	No. of Lugs	Outside Dia., inches	Applications
ANS1929A*	3/4	6	2-5/8	Chevy®/GMC® with 5,200 and 7,200 lb axles
ANS1930	3/4	6	2-7/8	Chevy®/GMC® with 11,000 and 13,500 lb axles
ANS7269A	1/2	4	2-3/4	1985 and later Ford® F250/F350 with floating rear axle.

*Blue-Point



ANS1929A



• Read safety precautions on pages W1 to W4

TIRE AND WHEEL: SPINDLE NUT SOCKETS



SNS2467



SNS2770



SNS3195



SNS3246

Spindle Nut Sockets

SNS2467 Spindle Nut Socket (Blue-Point®)

- Remove and install four-slot axle lock nuts
- 1/2–3/4 ton Dana® 44 axle
- Socket I.D.: 2"
- 1/2" drive

SNS2770 Socket, Spindle Nut, 6 Lug, 4 Wheel Drive (Blue-Point®)

- Remove and install four-slot front axle lock nuts
- 3/4–1 ton Dana® 44 axle
- Socket I.D.: 2-1/4"
- 1/2" drive

SNS3195 Spindle Nut Socket (Blue-Point®)

- For high-shear rotating nuts
- 1/2 ton Dana® 80 axle
- Socket I.D.: 2-3/8"
- 1/2" drive

SNS3246 Socket, Spindle Nut, 4 Lug, 4 Wheel Drive (Blue-Point®)

- Remove and install four-slot axle lock nuts
- 3/4–1 ton
- Socket I.D.: 2-1/4"
- 1/2" drive



YA6540

Axle Lock Nut Removers

YA6540 Nut Remover Kit for Toyota®/Lexus® vehicles Axle Locks

- This tool kit prevents damage to the axle shaft threads when removing the lock nut
- Unlocks and removes the 30 mm axle nuts from Toyota®/Lexus® vehicles
- Kit combines a 1/2" drive 12-point special depth 30 mm impact socket and unique angle axle-nut release tool
- This tool kit prevents damage to the axle shaft threads when removing the lock nut
- Unlocks and removes the 30 mm axle nuts from Toyota®/Lexus® vehicles
- Kit combines a 1/2" drive 12-point special depth 30 mm impact socket and unique angle axle-nut release tool

YA6541 1/2" Drive 30 mm Impact Socket (Blue-Point®)**YA6542 Lock Nut Release Tool (Blue-Point®)**

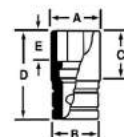
SIMDM300



IMDM320



IMDM390



Special Application Axle Nut Sockets (mm)

Stock No.	Size, mm	Style	A	B	C	D	E
SIMDM300	30	12-point	42.9	42.9	71.1	88.9	21.6
IMDM320	32	12-point	45.7	45.7	36.8	50.8	20.6
IMDM390	39	12-point	53.8	39.6	36.8	50.8	22.3
SIMM360TW	36	6-point	47.2	45.8	72.8	88.9	22.9

SIMDM300 1/2" Drive 6-Point Metric 30 mm**Flank Drive® Deep Impact Socket**

- Applications: Axle nut removal for Toyota®: Avalon®, Camry®, Highlander® and Matrix®; Lexus®: ES300; Pontiac®: Vibe®; VW®: Beetle®, Jetta® and Golf® (1999 and later); Dodge®: Dodge®/Freightliner® Sprinter® vans with 215 mm rear axle (2004 and newer)
- Applications: Automatic transmission tail output shafts for Chrysler®: 300C and Crossfire® (2004); Dodge®: Magnum® (2004); Jeep®: Grand Cherokee® V6 models (2005); Mercedes-Benz®: Many years of coverage
- Snap-on® impact sockets are heat-treated to optimize impact service life with a lower hardness than hand sockets and are able to withstand repeated cycling loads of impact wrenches
- Snap-on® uses a proprietary blend of special alloy socket steel that provides long life and great strength
- Flank Drive® wrenching system delivers up to 20% more turning power without slipping or rounding while exceeding ANSI® performance standards

IMDM320 12-Point Metric Shallow Impact Socket

- Applications: Service axle nuts on Mercedes-Benz® w140 chassis 1992–1999 SC and SL Class, Porsche® Boxster®, Cayenne® and 944 plus BMW® x3, X5® and X6® Series 2007 vehicles and later
- Other uses include drive shaft nuts on VW® Touareg® vehicles 2003 and later

IMDM390 12-Point Metric Shallow Impact Socket

- Use on front axle hub of 2007 Toyota® Tundra 4WD
- Applications: Use for servicing Inner Rack and Pinion Nuts on BMW® X5® and X6® vehicles

SIMM360TW Axle Nut Socket

- Thin wall design provides the extra room needed to remove and install the axle nut on Chevrolet® Sonic® vehicles

Wheel Hub Lock Tool

WLT1 Wheel Hub Lock Tool (Blue-Point®)

- Eliminates need for assistant to hold brake pedal while axle nuts are removed or installed
- Works on any vehicle with wheel stud bolt patterns ranging from 4 x 100 mm – 8 x 170 mm
- One-piece design with incorporated cushioned grip handle for comfort and ease-of-use
- Can also be used to hold rear differential yoke on solid axle vehicles during pinion seal or bearing service, as well as many other types of machines with drive shafts, yokes and universal joints



WLT1



Staked Axle Nut Punches

YA6545 Staked Axle Nut Punch Set (Blue-Point®)

- Punches release and stake the crush type axle nuts found on many vehicles
- Using punches with an air hammer makes it quick and easy to fully disengage the axle nut crimp therefore reducing damage to the threads
- Fully crimps the nut eliminating axle nuts correctly
- When re-staking the nut, the tool has the right size and shape to fully lock the nut in place
- When used with an air hammer the job is quick and easy
- Saves time and money on broken screwdrivers



Special Application Axle Nut Sockets (inches)

SIM540A 6-Point Axle Nut Socket

- Remove or install 1996 and later Dodge® truck axle nuts
- Use on truck and bus wheel applications
- Flank Drive® wrenching design
- 1/2" square drive

TIRE AND WHEEL: SHACKLE PIN

Shackle Pin Impact Sockets

Oval shaped wrench opening services shackle pins on International® and Kenworth® semi tractors

SPS10A 1/2" Drive 41/64" Shackle Pin SAE Impact Socket

- Designed with an oval configuration to service shackle pins on International Harvester® and Kenworth® semi trucks

SPS11A Shackle Pin Socket

- 21/32 x 1-17/32 x 1-3/4" long

SPS12 Shackle Pin Socket

- Manufactured from special billet alloy steel and heat treated for optimum strength and durability
- Impact rated 1/2" drive
- Socket opening is 3/4" x 1-9/32" – 1-3/4" long

SPS13 Spring Shackle Pin Socket

- Manufactured from special alloy steel, precision machined and heat treated for optimum strength and durability
- Hardened pins for engaging shackle pin



SPS10A



SPS13

LUG/RETAINING NUT



HDLUGSET2

Heavy Duty Truck Wheel Lug Sockets

HDLUGSET1 Heavy Duty Lug Socket Set

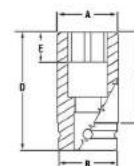
- Includes: SIM383, SIM403, SIM483B, SIMM333, SIMM383 plus BW726A and BWD483
- Flank Drive® wrenching system
- Alloy steel combines strength and durability
- All sockets 1" square drive

HDLUGSET2 Heavy Duty Lug Socket Set

- Includes: SIM342, SIM482, SIMM332, SIMM382, SIMM412, DW402C, plus BW626A, BWD482 and BWD412 in a PAKPB063 storage case
- Flank Drive® wrenching system
- Alloy steel combines strength and durability
- All sockets 3/4" square drive



S6840



Lug Nut Removal Sockets (Magazine Loading)

S6840 Magazine Loading Lug Nut Removal Socket

- Manufactured from special alloy steel, precision machined and heat-treated for optimum strength and durability
- Flank Drive® wrenching system grips fastener on the flanks/flats increasing torque and preventing fastener from rounding and increases the life of the socket

Applications:

- Saves technician time by housing the five lug nuts as they are removed, one at a time, from the wheels on Flexi-Van Chassis trailers

TIRE AND WHEEL: BUDD WHEEL

Budd Wheel Impact Sockets

- 6 point and square openings combined
- Use with socket retainers below
- Industrial finish



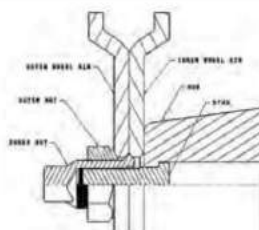
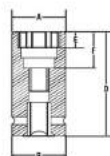
BWD482



BWD412



BWDS483



Stock No.	Dimension A, Socket End Diameter, inches	Dimension B, Drive End Diameter, inches	Dimension D, Length	Dimension E, Hex Depth	Dimension F, Square Depth, Inches	Hex Size	Square Size	Square Drive, inches
BWD482	2-7/32	1-3/4	4"	5/8"	1-11/16	1-1/2"	13/16"	3/4
BWD483	2-15/64	2-15/64	4"	5/8"	1-11/16	1-1/2"	13/16"	1
BWD412	2-11/32	1-3/4	4-1/4"	17/32"	1-43/64	41 mm	21 mm	3/4
BWDS483	2-15/64	2-15/64	4"	5/8"	1-9/64	1-1/2"	13/16"	1

BWDM412 3/4" Square Drive 6-Point Metric 21 mm Square Budd Wheel Impact Socket

- For 1986 and later Nissan® and Isuzu® classes 4, 5, 6 and 7
- Impact sockets are heat-treated to a low hardness range compared to chrome sockets so that under heavy, continuous use, the impact socket will withstand the impact blows and wear rather than break

BWDS483 1" Square Drive 6-Point SAE 13/16" Square Budd Wheel Impact Socket

- Dual-opening socket allows just one socket to remove the outer hex nut and the inner square nut used on Budd wheel assemblies for semi trucks and buses
- Flank Drive® wrenching configuration
- Special alloy steel for strength and durability
- Some Budd wheel assemblies have long inner nuts while some have short inner nuts
- The BWDS483 is designed to engage only short inner nuts; for long inner nuts, use the BWD483



BWS1316A



WSK755



WSK938

Stud Remover and Installers

BWS1316A Stud Remover (Blue-Point®)

- Use on 13/16" studs on Budd wheels

WSK755 Light Truck Wheel Stud Kit (Blue-Point®)

- Use on most US and import light trucks and SUVs
- Self-centering units permit quick installation the first time
- Will not damage threads: use with impact wrenches
- Clamshell container for storage
- Includes 9/16"-18, 1/2"-20, 12 mm-1.75 and 14 mm-1.5 installers plus spacer and washer

WSK938 Automotive Wheel Stud Kit (Blue-Point®)

- Use on most US and import cars
- Self centering units permit quick installation the first time
- Will not damage threads: use with impact wrenches
- Clamshell container for storage
- Includes 7/16"-20, 1/2"-20, 12 mm-1.25 and 12 mm-1.5 installers plus spacer and washer

Impact Sockets

- Use with socket retainers listed below
- Industrial finish
- Snap-on® impact sockets are heat-treated to a lower hardness to add impact resistance and ductility
- Superior wall construction absorbs repeated impact cycling loads
- Flank Drive® wrenching system provides flat-to-flat contact for up to 20% more turning power
- 6-point sockets engage fasteners every 60° for better turning power
- Always use impact sockets with impact guns to prevent injury and socket damage



BW626A

Stock No.	Square Drive, inches	Wrench Size	Length
BW626A	3/4	13/16" square	4"
IM562	3/4	1-3/4" hex	2-3/4"
SIMM332	3/4	33 mm hex	82.6 mm
BW726A	1	13/16" square	2-1/4"
SIMML332	3/4	33 mm hex	152.4 mm
SIMML333	1	33 mm hex	152.4 mm

IMPACT SOCKET RETAINERS

3/4" Drive Impact Socket Retainers

IM182R Rubber Locking Ring

- Snap-on® impact sockets are heat treated to optimize impact service life with a lower hardness than hand sockets and are able to withstand repeated cycling loads of impact wrenches
- Chrome sockets are heat treated to optimize non-impact torque application (too brittle for impact use and are not the safe choice)
- Snap-on® uses a proprietary blend of special alloy socket steel that provides long life and great strength
- Our Flank Drive® wrenching system delivers up to 20% more turning power without slipping or rounding while exceeding ANSI® performance standards

IM182P Steel Locking Pin

IMR2 Socket Retainer

- Retainer

IM243P Steel Locking Pin

- Steel locking pin
- Use on 1" Drive Sockets/Accessories up to 1-3/8" (35 mm) plus IM124B Adaptor

IMR3 Socket Retainer

- For all 1" drive sockets
- The one piece retention system holds the socket to the impact wrench anvil



TR200

Bead Breakers

TR200 Bead Breaker

- For bus, truck or tractor tires
- Sliding hammer weighs 13 lb
- Stroke length is 16"; overall length is 46" closed and 62" expanded



BH102

BH102 Hammer, 9-1/4 lb

- 9-1/4 lb, 32" long handle give force and leverage for bead breaking on auto and large truck tires
- Rubber hand grip

BH102-1 Replacement Hammer Handle

TIRE AND WHEEL: GENERAL SERVICE TOOLS



B2193

Toyota®/Lexus® Carrier Assembly Socket

B2193 3/8" Drive 5-Point Spare Tire Carrier Assembly Socket

- Tough nickel-chrome plating provides corrosion resistance
- Special alloy steel provides the highest match of strength and durability
- Lower and remove the spare tire from the carrier assembly on various Toyota® and Lexus® vehicles for PDI (pre-delivery inspection)
- Great time saver for PDI when selling a new vehicle and you want to check the air pressure of the spare tire
- Saves time when doing an oil change and the air pressure of the spare tire is checked as part of the service
- 4" long



TR100

TR102

Rim

TR100 Rim Tool

- Use on split rims and rim lock rings
- One end is angled; the other is straight
- 19-1/8" long with 9/16" and 5/8" wide ends

TR102 Rim Tool

- For drop center rims
- 18" long with a 1-3/8" wide end



SGCP1BR

CP9

S9094B

Cotter Pin Pullers

SGCP1BR Cotter Pin Puller

- Make short work of pulling even large pins
- Heat-treated shank provides maximum strength
- Soft grip handle: 8-1/2" long

S9094B Cotter Pin Puller

- Pins removed by hitting anvil sharply
- Side handle ensures a firm grip
- 10" long
- Replaceable steel hook

S9094A2X Replacement Hook and Rivet Set

Rivet Set

- For S9094B

CP9 Cotter Pin Puller

- 38° angle end pries cotter pin loose
- 105° angle end pulls it out
- 10" long



TWP8

Truck Wheel Pan

TWP8 Truck Wheel Pan (Blue-Point®)

- Helps prevent messes and spills
- Fits rims with 13-3/4" inside diameter or larger for use on most large trucks and trailers
- Holds 88 oz of oil
- Pan will not warp if oil is warm
- Compartment above handles holds hub nuts



GCP10

Dust Cap

GCP10 Grease and Dust Cap Tool

- Tapered jaws of tool fit behind the crimped edge of grease cap
- One handle is designed for prying hub caps loose



YA9020A

Wheel Chocks

YA9020A Truck Wheel Chocks

- Heavy duty truck chocks are connected by a 10' nylon rope and measure 8" wide and 8" high overall
- Non-slide design