

WILLIAMS®



15 PIECE 3/8" DRIVE SOCKET AND DRIVE TOOL SET

12 Point Compact Case Tool Set, SAE

Product Code	Description
50673	15 Piece 3/8" Drive Socket and Drive Tool Set

Contents Include:

3/8" Drive Tools:		3/8" Drive Shallow 12 Point Sockets:					
Product Code	Description	Product Code	Size (Inches)	Product Code	Size (Inches)	Product Code	Size (Inches)
31001	7 3/4" Pear Head Ratchet	31208	1/4	31216	1/2	31224	3/4
31002	3" Extension	31210	5/16	31218	9/16	31226	13/16
31003	6" Extension	31212	3/8	31220	5/8	31228	7/8
31006	Universal Joint	31214	7/16	31222	1 1/16		

Features

- All tools are professional quality, made of high-grade chrome vanadium steel
- Sockets feature SUPERTORQUE® lobular openings for greater turning power without deforming the fastener
- Packed in rugged compact high-density polyethylene (HDPE) cases that are strong and durable yet light in weight



50673

WILLIAMS®



15 PIECE 3/8" DRIVE SOCKET AND DRIVE TOOL SET

6 Point Compact Case Tool Set, SAE

Product Code	Description
50663	15 Piece 3/8" Drive Socket and Drive Tool Set

Contents Include:

3/8" Drive Tools:		3/8" Drive Shallow 12 Point Sockets:					
Product Code	Description	Product Code	Size (Inches)	Product Code	Size (Inches)	Product Code	Size (Inches)
31001	7 3/4" Pear Head Ratchet	31108	1/4	31116	1/2	31124	3/4
31002	3" Extension	31110	5/16	31118	9/16	31126	13/16
31003	6" Extension	31112	3/8	31120	5/8	31128	7/8
31006	Universal Joint	31114	7/16	31122	1 1/16		

Features

- All tools are professional quality, made of high-grade chrome vanadium steel
- Sockets feature SUPERTORQUE® lobular openings for greater turning power without deforming the fastener
- Packed in rugged compact high-density polyethylene (HDPE) cases that are strong and durable yet light in weight



50663

WILLIAMS®



15 PIECE 3/8" DRIVE SOCKET AND DRIVE TOOL SET

6 Point Compact Case Tool Set, Metric

Product Code	Description
50665	16 Piece 3/8" Drive Socket and Drive Tool Set

Contents Include:

3/8" Drive Tools:		3/8" Drive Shallow 12 Point Sockets:					
Product Code	Description	Product Code	Size (mm)	Product Code	Size (mm)	Product Code	Size (mm)
31001	7 3/4" Pear Head Ratchet	31508	8	31512	12	31516	16
31002	3" Extension	31509	9	31513	13	31517	17
31003	6" Extension	31510	10	31514	14	31518	18
31006	Universal Joint	31511	11	31515	15	31519	19

Features

- All tools are professional quality, made of high-grade chrome vanadium steel
- Sockets feature SUPERTORQUE® lobular openings for greater turning power without deforming the fastener
- Packed in rugged compact high-density polyethylene (HDPE) cases that are strong and durable yet light in weight



50665

3/8" DRIVE

SOCKETS AND
DRIVE TOOLS

284



WILLIAMS®

3/8" DRIVE ENCLOSED HEAD RATCHETS

Williams® Sealed Narrow Head Design,
Chrome and Black Industrial Finish

Product Code	Description	Length (Inches)	Number of Teeth
B-52EHA	Chrome Finish Enclosed Head Ratchet	8	36
B-52EHLA	Chrome Finish Enclosed Head Ratchet, Long	10 1/4	36
B-52EHFB	Chrome Finish Flex Head Ratchet	9 11/16	36
BB-52EHA	Black Industrial Finish Enclosed Head Ratchet	8	36
B-52EHRKA	Repair Kit "EHA, EHLA, EHFA" Model Enclosed Head Ratchets		

Fed. Spec: ANSI B107.10M



Features

- Enclosed head is sealed to prevent dust, dirt, and liquids from entering head, preserving internal lubrication.
- Forged one-piece ratchet provide strength and safety for industrial applications.
- Smooth comfort-grip handle permits all-day use without gloves.
- 36 tooth gear with 10 degree of engagement allows engagement in tight working areas.
- Nickel/Chrome plating provides increase protection from rust and corrosion.
- Chrome finish models feature mirror-like exterior that can be easily cleaned after each use.
- Single Pawl ratchet design:
 - 1) Designed for tighter tolerances between pawl and gear which reduces metal fatigue and slippage under load.
 - 2) Does not require as many working parts, reducing possible breakage and parts to repair.
- Easy access reverse lever allows user to change working direction quickly and easily with only one hand.



B-52EHA



B-52EHLA



B-52EHFB



BB-52EHA

WILLIAMS®

3/8" DRIVE ROUND HEAD RATCHETS

Knurled Handle, Chrome and Black Industrial Finish

Product Code	Description	Length (Inches)	Number of Teeth
B-52A	Chrome Finish Round Head Ratchet	7 5/8	72
B-53A	Chrome Finish Round Head Ratchet, Long	10 1/2	72
BB-52A	Black Industrial Finish Round Head Ratchet	7 5/8	72
B-52ARK	Repair Kit for Round Head Ratchets		

Fed. Spec: ANSI B107.10M



Features

- Double pawl design with 72 teeth action provides a 5° ratcheting angle.
- Shift lever reverses action instantly.
- Knurled handle provides a non-slip grip.
- Chrome finish models provides increased protection from rust and corrosion.



B-52A



BB52A



B-53A

3/8" DRIVE

SOCKETS AND
DRIVE TOOLS



3/8" DRIVE HANDLES

Knurled Handle, High-Polished Chrome Finish

Product Code	Description	Length (Inches)
B-40B	Flex Handle	8 ⁹ / ₁₆
B-20A	Sliding T-Handle	7 ¹⁵ / ₁₆
B-15	Speeder Handle	18

Fed. Spec: ANSI B107.10M



Features

- Chrome plating provides increased protection from rust and corrosion.
- Drive handles provide extra leverage with greater strength than ratchets.
- Speeder handle is ideal for fast turn down of fasteners.



3/8" DRIVE EXTENSIONS AND ACCESSORIES

High-Polished Chrome Finish

Product Code	Description	Length (Inches)
B-101	Extension	1 1/2
B-108	Extension	3
B-110	Extension	6
B-115	Extension	11
B-118	Extension	18
BFE-8	Flexible Extension	8
B-140A	Universal Joint	2
B-70	Ratchet Spinner Disk	1 1/4

Fed. Spec: ANSI B107.10M

WSB-5XT 5 Piece Extension Set in Pouch – 049605

Contents Include:

Product Code	Size (Inches)	Product Code	Size (Inches)
B-101	1 1/2	B-115	11
B-108	3	B-118	18
B-110	6		

Features

- Chrome plating provides increased protection from rust and corrosion.
- Flexible extension is designed for low torque applications in limited access areas.
- Ball and spring socket retention.
- Spinner disk is ideal for fast turn down of fasteners.



3/8" DRIVE ADAPTORS

High-Polished Chrome and Black Industrial Finish

Product Code	Length (Inches)	Male End (Inches)	Female End (Inches)
--------------	-----------------	-------------------	---------------------

Chrome Finish

BS-130	1 ⁵ / ₁₆	1/2	3/8
--------	--------------------------------	-----	-----

Black Industrial Finish

BS-130B	1 ⁵ / ₁₆	1/2	3/8
BS-131BF	1 ⁵ / ₁₆	3/8	1/2

Fed. Spec: ANSI B107.10M



Features

- Ball and spring socket retention.



3/8" DRIVE

SOCKETS AND DRIVE TOOLS





WILLIAMS®

3/8" DRIVE RATCHETS AND HANDLES

High-Polished Chrome Finish

Product Code	Description	Length (Inches)	Repair Kit
31001	38 Tooth Quick-Release Ratchet	7 3/4	31001RK
31011	Ultra-Fine 60-Tooth Ratchet	7 3/4	31011RK
31005	Flex Handle	10	
11920	Flex Handle, Comb. 3/8" x 1/2" Drive	10	
31007	Sliding T-Handle	7 3/4	
31016A	3/8" Drive Spinner Handle	9	

Fed. Spec: ANSI B107.10M

Features

- Ball and spring socket retention.
- Williams 3/8" Drive Ratchets Feature:
 - Ultra-fine 60 tooth model offers 6° tooth action in a narrow pear head.
 - Unique Finger-Fit handles to provide a comfortable, non-slip grip and extra turning power.
 - Choice of 38-tooth quick-release or 60-tooth ultra-fine gear.
 - Narrow pear-shaped heads for access into confined work areas.
 - High-polished chrome finish for easy cleaning.
- Spinner handles features three component comfort grip handle.
- Unique combination 3/8" x 1/2" drive flex handle offers convenience of both drive sizes on one handle.

WILLIAMS®

3/8" DRIVE EXTENSIONS AND ACCESSORIES

High-Polished Chrome Finish

Product Code	Description	Length (Inches)
31002	Extension	3
31003	Extension	6
31004	Extension	10
31006	Universal Joint	2
31008	Adaptor, 3/8" F x 1/4" M	1
31009	Adaptor, 3/8" F x 1/2" M	1 1/4
31013	Holder for 1/2" Hex Screwdriver Bits	3/4
31023	Locking Extension	3
31024	Locking Extension	6
31025	Locking Extension	10
31026	Locking Extension	12
31027	Locking Extension	18
31028	Locking Extension	24

Fed. Spec: ANSI B107.10M

Features

- Chrome plating provides increased protection from rust and corrosion.
- Ball and spring socket retention.

WILLIAMS®

6 PIECE 3/8" DRIVE RATCHET AND DRIVE TOOL SET

Furnished in a Pouch

Product Code	Description
31920	6 Piece 3/8" Drive Ratchet and Accessory Set

Contents Include:

Product Code	Description	Product Code	Description
31001	38 Tooth Quick-Release Ratchet	31005	10" Flex Handle Breaker Bar
31002	3" Extension	31006	Universal Joint
31004	10" Extension	31007	7 3/4" Sliding T-Handle

Features

- All tools are professional quality, made of high-grade chrome vanadium steel.

3/8" DRIVE

SOCKETS AND
DRIVE TOOLS

3/8" DRIVE SHALLOW 12 POINT SOCKETS, SAE

High-Polished Chrome Finish

Product Code	Size (Inches)	A OAL (Inches)	B Drive End Diameter (Inches)	C Working End Diameter (Inches)	D Broach Depth (Inches)	E Bolt Clearance Depth (Inches)	F Bolt Clearance Diameter (Inches)	Nose Length (Inches)
B-1208	1/4	1 1/32	11/16	13/32	7/32	9/16	7/32	17/32
B-1210	5/16	1 1/32	11/16	7/16	1/4	9/16	17/64	17/32
B-1211	1/32	1 1/32	11/16	1/2	9/32	9/16	21/64	17/32
B-1212	3/8	1 1/32	11/16	9/16	9/32	9/16	11/32	17/32
B-1214	7/16	1 1/32	11/16	5/8	5/16	9/16	11/32	17/32
B-1216	1/2	1 1/32	23/32	23/32	11/32	3/8	3/8	-
B-1217	17/32	1 1/32	25/32	25/32	13/32	3/4	1/2	-
B-1218	9/16	1 3/32	25/32	25/32	9/16	19/32	17/32	-
B-1219	19/32	1 3/32	25/32	25/32	9/16	9/16	9/16	-
B-1220	5/8	1 1/8	27/32	27/32	19/32	5/8	19/32	-
B-1222	11/16	1 9/32	15/16	15/16	5/8	5/8	11/16	-
B-1224	3/4	1 3/16	1	1	11/16	11/16	23/32	-
B-1226	13/16	1 1/4	1 1/16	1 1/16	11/16	11/16	25/32	-
B-1228	7/8	1 9/32	1 5/32	1 5/32	25/32	25/32	7/8	-
B-1230	15/16	1 3/8	1 1/4	1 1/4	13/16	27/32	29/32	-
B-1232	1	1 13/32	1 5/16	1 5/16	27/32	7/8	1	-

Fed. Spec: ANSI B107.110



B-1212 B-1208

WSB-10RC 10 Piece 3/8" Drive Shallow 12-Point Socket Set on Clip Rail

Contents Include:

Product Code	Size (Inches)	Product Code	Size (Inches)	Product Code	Size (Inches)
B-1210	5/16	B-1218	9/16	B-1226	13/16
B-1212	3/8	B-1220	5/8	B-1228	7/8
B-1214	7/16	B-1222	11/16		
B-1216	1/2	B-1224	3/4		

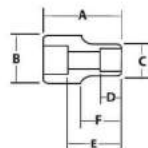
WSB-13RC 13 Piece 3/8" Drive Shallow 12-Point Socket Set on Clip Rail

Contents Include:

Product Code	Size (Inches)	Product Code	Size (Inches)	Product Code	Size (Inches)
B-1208	1/4	B-1218	9/16	B-1228	7/8
B-1210	5/16	B-1220	5/8	B-1230	15/16
B-1212	3/8	B-1222	11/16	B-1232	1
B-1214	7/16	B-1224	3/4		
B-1216	1/2	B-1226	13/16		

Features

- SUPERTORQUE[®] lobular openings for greater turning power without deforming the fastener.
- Designed for quick engagement on both 6 and 12 point fasteners.



WSB-10RC



WSB-13RC

3/8" DRIVE

SOCKETS AND DRIVE TOOLS





3/8" DRIVE SHALLOW SOCKETS, 6 POINT, SAE

High-Polished Chrome Finish



Product Code	Size (Inches)	A OAL (Inches)	B Drive End Diameter (Inches)	C Working End Diameter (Inches)	D Broach Depth (Inches)	E Bolt Clearance Depth (Inches)	F Nose Length (Inches)
B-608	1/4	1 1/32	1 1/16	13/32	1/32	9/16	1/2
B-610	5/16	1 1/32	1 1/16	7/16	1/4	9/16	1/2
B-611	11/32	1 1/32	1 1/16	1/2	9/32	9/16	1/2
B-612	3/8	1 1/32	1 1/16	9/16	9/32	9/16	1/2
B-614	7/16	1 1/32	1 1/16	5/8	9/16	9/16	1/2
B-616	1/2	1 1/32	23/32	23/32	11/32	9/16	-
B-618	9/16	1 3/32	25/32	25/32	9/16	19/32	-
B-620	5/8	1 1/8	27/32	27/32	19/32	5/8	-
B-622	11/16	1 5/32	15/16	15/16	5/8	5/8	-
B-624	3/4	1 9/16	1	1	21/32	11/16	-
B-626	13/16	1 1/4	1 1/16	1 1/16	1 1/16	23/32	-
B-628	7/8	1 9/32	1 5/32	1 9/32	3/4	25/32	-
B-630	15/16	1 3/8	1 1/4	1 1/4	13/16	27/32	-
B-632	1	1 13/32	1 5/16	1 5/16	27/32	7/8	-

Fed. Spec. ANSI B107.110

WSS-8HRC 8 Piece 3/8" Drive Shallow 6 Point Socket Set on Clip Rail

Contents Include:

Product Code	Size (Inches)	Product Code	Size (Inches)	Product Code	Size (Inches)
B-608	1/4	B-614	7/16	B-620	5/8
B-610	5/16	B-616	1/2	B-624	3/4
B-612	3/8	B-618	9/16		

WSB-10HRC 10 Piece 3/8" Drive Shallow 6 Point Socket Set on Clip Rail

Contents Include:

Product Code	Size (Inches)	Product Code	Size (Inches)	Product Code	Size (Inches)
B-610	5/16	B-618	9/16	B-626	13/16
B-612	3/8	B-620	5/8	B-628	7/8
B-614	7/16	B-622	11/16		
B-616	1/2	B-624	3/4		

WSB-13HRC 13 Piece 3/8" Drive Shallow 6 Point Socket Set on Clip Rail

Contents Include:

Product Code	Size (Inches)	Product Code	Size (Inches)	Product Code	Size (Inches)
B-608	1/4	B-618	9/16	B-628	7/8
B-610	5/16	B-620	5/8	B-630	15/16
B-612	3/8	B-622	11/16	B-632	1
B-614	7/16	B-624	3/4		
B-616	1/2	B-626	13/16		



Features

- SUPERTORQUE® lobular openings for greater turning power without deforming the fastener.
- Designed for maximum engagement on 6 point fasteners.



MSS-8HRC



WSB-10HRC



WSB-13HRC

3/8" DRIVE

SOCKETS AND DRIVE TOOLS

WILLIAMS®

12 F

3/8" DRIVE SHALLOW SOCKETS, 12 POINT, SAE

High-Polished Chrome Finish

Product Code	Size (Inches)	OAL (Inches)	Drive End Diameter (Inches)	Working End Diameter (Inches)	Broach Depth (Inches)	Bolt Clearance Depth (Inches)	Bolt Clearance Diameter (Inches)	Nose Length (Inches)
31208	1/4	1	11/16	7/16	1/32	9/16	7/32	17/32
31210	5/16	1	11/16	15/32	3/8	11/32	1/4	17/32
31212	3/8	1	11/16	9/16	3/8	1/2	9/32	17/32
31214	7/16	1	11/16	3/4	1/32	17/32	13/32	17/32
31216	1/2	1	3/4	3/4	13/32	19/32	7/16	-
31218	5/8	1 1/16	25/32	25/32	17/32	5/8	17/32	-
31220	3/4	1 1/16	7/8	7/8	13/32	19/32	11/16	-
31222	13/16	1 1/16	15/16	15/16	1/2	11/16	27/32	-
31224	3/4	1 1/8	1	1	9/16	23/32	23/32	-
31226	15/16	1 1/8	1 1/8	1 1/8	9/16	23/32	23/32	-
31228	7/8	1 1/2	1 3/16	1 3/16	27/32	19/16	27/32	-
31230	15/16	1 7/32	1 1/4	1 1/4	27/32	19/16	27/32	-
31232	1	1 7/32	1 5/16	1 5/16	11/16	19/16	31/32	-

Fed. Spec: ANSI B107.110

31923 9 Piece 3/8" Drive Shallow 12 Point Socket Set on Clip Rail
Contents Include:

Product Code	Size (Inches)	Product Code	Size (Inches)	Product Code	Size (Inches)
31208	1/4	31214	7/16	31220	3/4
31210	5/16	31216	1/2	31222	11/16
31212	3/8	31218	5/8	31224	3/4

31927 10 Piece 3/8" Drive Shallow 12 Point Socket Set on Clip Rail
Contents Include:

Product Code	Size (mm)	Product Code	Size (mm)	Product Code	Size (mm)
31208	1/4	31210	5/16	31212	3/8
31214	7/16	31216	1/2	31218	5/8
31220	3/4	31222	11/16	31224	3/4
31226	13/16				

31925 13 Piece 3/8" Drive Shallow 12 Point Socket Set on Clip Rail
Contents Include:

Product Code	Size (Inches)	Product Code	Size (Inches)	Product Code	Size (Inches)
31208	1/4	31218	5/8	31228	7/8
31210	5/16	31220	3/4	31230	15/16
31212	3/8	31222	11/16	31232	1
31214	7/16	31224	3/4		
31216	1/2	31226	13/16		

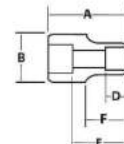


Features

- SUPERTORQUE® lobular openings for greater turning power without deforming the fastener.
- Designed for maximum engagement on 12 point fasteners.



31116 31108



Features

- SUPERTORQUE® lobular openings for greater turning power without deforming the fastener.
- Designed for maximum engagement on 6 point fasteners.

3/8" DRIVE

SOCKETS AND DRIVE TOOLS





3/8" DRIVE SHALLOW SOCKETS, 4 & 8 POINT, SAE

High-Polished Chrome Finish



BD-814



WSBD-7RC

Product Code	Size (Inches)	A		B		C		D		E		F	
		OAL (Inches)	Drive End Diameter (Inches)	Working End Diameter (Inches)	Broach Depth (Inches)	Bolt Clearance Depth (Inches)	Bolt Clearance Diameter (Inches)	Nose Length (Inches)					
BD-808	1/4	29/32	21/32	19/32	7/32	13/32	5/32	7/16					
B-409 **	9/32	1 1/32	11/16	9/16	5/16	17/32	3/16	1/2					
BD-810	5/16	29/32	21/32	9/16	1/4	13/32	1/4	7/16					
BD-812	3/8	15/16	11/16	47/64	9/32	7/16	5/16	15/32					
BD-814	7/16	1	23/32	23/32	9/32	1/2	5/16	-					
BD-816	1/2	1	23/32	23/32	5/16	1/2	13/32	-					
BD-818	9/16	1 1/8	1	1	13/32	5/8	17/32	-					
BD-820	5/8	1 1/8	1 1/16	1 1/16	7/16	5/8	19/32	-					

** 4 Point Socket
Fed. Spec: ANSI B107.110

WSBD-7RC 7 Piece 8 Point Socket Set on Clip Rail

Contents Include:

Product Code	Size (Inches)	Product Code	Size (Inches)	Product Code	Size (Inches)
BD-808	1/4	BD-814	7/16	BD-820	5/8
BD-810	5/16	BD-816	1/2		
BD-812	3/8	BD-818	9/16		

Features

- SUPERTORQUE[®] lobular openings for greater turning power without deforming the fastener.
- 8 point sockets are designed for quick engagement on 4 point fasteners.



3/8" DRIVE 5 POINT PENTA-SOCKET

Black Industrial Finish



BB-526

Product Code	Size (Inches)	A		B		C		D		E		F	
		OAL (Inches)	Drive End Diameter (Inches)	Working End Diameter (Inches)	Broach Depth (Inches)	Bolt Clearance Depth (Inches)	Bolt Clearance Diameter (Inches)	Nose Length (Inches)					
BB-526	51/64	1 1/16	1 1/8	1 1/8	7/16	1/2	23/32	-					

Features

- 5 point Penta-Socket services 5 point nuts found on tamper-resistant Buffalo covers used by gas, electric, and some water companies to protect shutoff gates.



3/8" DRIVE UNIVERSAL SOCKETS, 12 POINT, SAE

High-Polished Chrome Finish



BU-1220, BU-1212



WSB-7U

Product Code	Size (Inches)	A		B		C		D		E		F	
		OAL (Inches)	Drive End Diameter (Inches)	Open End Diameter (Inches)	Broach Depth (Inches)	Bolt Clearance Depth (Inches)	Bolt Clearance Diameter (Inches)	Nose Length (Inches)					
BU-1212	3/8	1 29/32	3/4	1/2	1/4	1/2	5/16	15/64					
BU-1214	7/16	1 29/32	3/4	5/8	1/4	1/2	11/32	15/64					
BU-1216	1/2	1 29/32	3/4	11/16	5/16	9/16	11/32	9/32					
BU-1218	9/16	1 29/32	3/4	3/4	11/32	5/8	11/32	17/32					
BU-1220	5/8	1 29/32	3/4	7/8	3/8	11/16	11/32	17/32					
BU-1222	11/16	2	3/4	15/16	7/16	23/32	11/32	17/32					
BU-1224	3/4	2 1/8	3/4	1	17/32	13/16	11/32	5/8					

Fed. Spec: ANSI B107.110

WSB-7U 7 Piece 12 Point Universal Socket Set on Clip Rail

Contents Include:

Product Code	Size (Inches)	Product Code	Size (Inches)	Product Code	Size (Inches)
BU-1212	3/8	BU-1218	9/16	BU-1224	3/4
BU-1214	7/16	BU-1220	5/8		
BU-1216	1/2	BU-1222	11/16		

Features

- Ideal for work in confined areas where fastener is inaccessible to standard sockets.



3/8" DRIVE

SOCKETS AND DRIVE TOOLS

3/8" DRIVE UNIVERSAL SOCKETS, 6 POINT, SAE

High-Polished Chrome Finish

Product Code	Size (Inches)	A		B		C		D		E		F
		OAL (Inches)	Drive End Diameter (Inches)	Open End Diameter (Inches)	Broach Depth (Inches)	Bolt Clearance Depth (Inches)	Bolt Clearance Diameter (Inches)	Nose Length (Inches)				
31142	3/8	1 53/64	3/4	9/16	3/8	35/64	21/64	5/16				
31144	7/16	1 53/64	3/4	9/8	3/8	35/64	21/64	5/16				
31146	1/2	1 57/64	3/4	49/64	13/32	37/64	21/64	13/32				
31148	9/16	1 57/64	3/4	25/32	7/16	43/64	21/64	33/64				
31150	5/8	2	3/4	59/64	7/16	45/64	21/64	39/64				
31152	11/16	2 3/64	3/4	19/16	31/64	3/4	21/64	17/32				
31154	3/4	2 3/64	3/4	1 1/64	1/2	51/64	21/64	17/32				

Fed. Spec: ANSI B107.110



31154

31142

31938 7 Piece 6 Point Universal Socket Set on Clip Rail

Contents Include:

Product Code	Size (Inches)	Product Code	Size (Inches)	Product Code	Size (Inches)
31142	3/8	31148	9/16	31154	3/4
31144	7/16	31150	5/8		
31146	1/2	31152	11/16		

Features

- Ideal for work in confined areas where fastener is inaccessible to standard sockets



31938

3/8" DRIVE UNIVERSAL SOCKETS, 6 POINT, MM

High-Polished Chrome Finish

Product Code	Size (mm)	A		B		C		D		E		F
		OAL (Inches)	Drive End Diameter (Inches)	Open End Diameter (Inches)	Broach Depth (Inches)	Bolt Clearance Depth (Inches)	Bolt Clearance Diameter (Inches)	Nose Length (Inches)				
31528	8	1 27/32	3/4	19/32	23/64	35/64	15/64	21/64				
31530	10	1 55/64	3/4	9/16	23/64	35/64	21/64	21/64				
31531	11	1 55/64	3/4	5/8	23/64	35/64	21/64	21/64				
31532	12	1 55/64	3/4	43/64	23/64	35/64	21/64	21/64				
31533	13	1 55/64	3/4	45/64	23/64	35/64	21/64	23/64				
31534	14	1 15/16	3/4	49/64	25/64	39/64	21/64	1/2				
31535	15	1 57/64	3/4	53/64	25/64	39/64	21/64	1/2				
31536	16	2	3/4	59/64	7/16	45/64	21/64	1/2				
31537	17	2	3/4	15/16	7/16	45/64	21/64	1/2				
31538	18	2 1/64	3/4	19/16	19/32	3/4	21/64	1/2				
31539	19	2 3/64	3/4	1	1/2	49/64	21/64	1/2				

Fed. Spec: ANSI B107.110

31939 11 Piece 6 Point Universal Socket Set on Clip Rail

Contents Include:

Product Code	Size (mm)	Product Code	Size (mm)	Product Code	Size (mm)
31528	8	31533	13	31537	17
31530	10	31534	14	31538	18
31531	11	31535	15	31539	19
31532	12	31536	16		

Features

- Ideal for work in confined areas where fastener is inaccessible to standard sockets



31539

31528



31939



BCO32

WBCO-10

WILLIAMS



3/8" DRIVE CROWFOOT WRENCH, OPEN END, SAE

Satin Chrome Finish, SAE

Product Code	Size (Inches)	A Outside Diameter (Inches)	C Center to Center (Inches)	D Overall Length (Inches)	E Head Depth (Inches)	F Total Depth (Inches)
BCO12	3/8"	7/8	23/32	7/32	33/64	1 19/64
BCO14	7/16"	7/8	41/64	7/32	33/64	1 17/64
BCO16	1/2"	1 1/32	59/64	7/32	33/64	1 29/64
BCO18	9/16"	1 1/4	59/64	7/32	33/64	1 5/8
BCO20	5/8"	1 1/4	59/64	7/32	33/64	1 19/32
BCO22	11/16"	1 9/16	1 3/32	7/32	33/64	1 59/64
BCO24	3/4"	1 9/16	1 1/32	7/32	33/64	1 57/64
BCO26	13/16"	1 23/32	1 3/32	9/32	19/32	2
BCO28	7/8"	1 23/32	1 1/32	9/32	19/32	1 31/32
BCO30	15/16"	2	1 5/32	11/32	21/32	2 1/8
BCO32	1"	2	1 5/16	11/32	21/32	2 3/32
BCO40	1 1/4"	2 3/32	1 15/64	3/8	41/64	2 7/32
BCO44	1 3/8"	2 3/8	1 19/64	3/8	41/64	2 9/8

WBCO-10 10 Piece 3/8" Drive Crowfoot Wrenches on Clip Rails, SAE

Contents Include:

Product Code	Size (Inches)	Product Code	Size (Inches)	Product Code	Size (Inches)
BCO12	3/8"	BCO18	9/16"	BCO24	3/4"
BCO14	7/16"	BCO20	5/8"	BCO26	13/16"
BCO16	1/2"	BCO22	11/16"	BCO28	7/8"
				BCO32	1"

Features

- Crowfoot wrenches are professional quality, made of high grade steel.
- Featuring an open end with a continuous arc for constant contact with the fastener for greater turning power without deforming the fastener.



WILLIAMS



3/8" DRIVE CROWFOOT WRENCH, OPEN END, MM

Satin Chrome Finish, MM



BCOM19

WBCOM-10

Product Code	Size (mm)	A Outside Diameter (Inches)	B Center to Center (Inches)	C Overall Length (Inches)	D Head Depth (Inches)	E Total Depth (Inches)
BCOM10	10	7/8	11/16	1/4	1/2	1 1/4
BCOM11	11	7/8	9/8	1/4	1/2	1 1/4
BCOM12	12	1	13/16	1/4	1/2	1 1/2
BCOM13	13	1	9/8	1/4	1/2	1 1/2
BCOM14	14	1	9/8	1/4	1/2	1 3/8
BCOM15	15	1 1/4	7/8	1/4	1/2	1 5/8
BCOM16	16	1 1/4	7/8	1/4	1/2	1 5/8
BCOM17	17	1 1/4	13/16	1/4	1/2	1 5/8
BCOM18	18	1 1/2	1 1/8	1/4	1/2	1 7/8
BCOM19	19	1 1/2	1	1/4	1/2	1 7/8
BCOM20	20	1 1/2	1	1/4	1/2	1 7/8
BCOM21	21	1 3/4	1 1/8	1/4	5/8	1 7/8
BCOM22	22	1 3/4	1	1/4	5/8	2

WBCOM-10 10 Piece 3/8" Drive Crowfoot Wrenches on Clip Rails, MM

Contents Include:

Product Code	Size (mm)	Product Code	Size (mm)	Product Code	Size (mm)
BCOM10	10	BCOM13	13	BCOM16	16
BCOM11	11	BCOM14	14	BCOM17	17
BCOM12	12	BCOM15	15	BCOM18	18
				BCOM19	19

Features

- Crowfoot wrenches are professional quality, made of high grade steel.
- Featuring an open end with a continuous arc for constant contact with the fastener for greater turning power without deforming the fastener.



3/8" DRIVE

SOCKETS AND DRIVE TOOLS

3/8" DRIVE CROWFOOT WRENCH, OPEN END, SAE

High-Polished Chrome Finish

Product Code	Size (Inches)	A Overall Length (Inches)	B Diameter of Head (Inches)	C Thickness of Head (Inches)	D Thickness of Drive End (Inches)	Length of Centers (Inches)
10700	3/8	1 1/4	3/4	1/4	1/2	3/8
10701	7/16	1 3/8	3/4	1/4	1/2	3/4
10702	1/2	1 1/2	1	1/4	1/2	3/4
10703	9/16	1 3/4	1 1/8	1/4	1/2	1
10704	5/8	1 3/4	1 1/4	1/4	1/2	1
10705	11/16	2	1 1/2	1/4	1/2	1 1/8
10706	3/4	2	1 1/2	1/4	1/2	1 1/8
10707	13/16	2 1/8	1 5/8	1/4	1/2	1 1/4
10708	7/8	2 1/4	1 5/8	1/4	1/2	1 1/4
10709	15/16	2 1/4	2	3/8	1/2	1 1/4
10710	1	2 1/4	2	3/8	1/2	1 1/4
10711	1 1/16	2	1 3/4	3/8	5/8	1 1/8
10712	1 1/8	2	1 3/4	3/8	5/8	1 1/8
10713	1 3/16	1 5/8	2	3/8	5/8	1 1/4
10714	1 1/4	1 5/8	2	3/8	5/8	1 1/4
10715	1 9/16	1 5/8	2 1/8	3/8	5/8	1 1/4
10716	1 3/8	2 1/4	2 1/4	3/8	5/8	1 1/4
10717	1 7/16	2 1/4	2 3/8	3/8	5/8	1 3/8
10718	1 1/2	2 1/2	2 1/2	3/8	5/8	1 3/8
10719	1 5/8	2 1/2	2 1/2	3/8	5/8	1 1/2
10720	1 5/8	2 1/2	2 1/2	3/8	5/8	1 1/2
10721	1 11/16	2 1/2	2 3/8	3/8	5/8	1 1/2
10722	1 3/4	2 1/2	2 3/4	3/8	5/8	1 1/2
10723	1 13/16	2 1/2	2 3/4	3/8	5/8	1 1/2
10724	1 3/4	2 3/4	3 1/8	3/8	5/8	1 5/8
10725	1 15/16	2 3/4	3 1/8	3/8	5/8	1 5/8
10726	2	3	3 3/8	1/2	3/8	1 3/4

Fed. Spec: ANSI B107.110

10741 14 Piece 3/8" Drive Crowfoot Wrenches on Clip Rails

Contents Include:

Product Code	Size (Inches)	Product Code	Size (Inches)	Product Code	Size (Inches)
10713	1 3/16	10718	1 1/2	10723	1 13/16
10714	1 1/4	10719	1 5/8	10724	1 3/8
10715	1 9/16	10720	1 5/8	10725	1 15/16
10716	1 3/8	10721	1 11/16	10726	2
10717	1 7/16	10722	1 3/4		



10741

10740 13 Piece 3/8" Drive Crowfoot Wrenches on Clip Rails

Contents Include:

Product Code	Size (Inches)	Product Code	Size (Inches)	Product Code	Size (Inches)
10700	3/8	10704	5/8	10708	7/8
10701	7/16	10705	11/16	10709	15/16
10702	1/2	10706	3/4	10710	1
10703	9/16	10707	13/16	10711	1 1/16
				10712	1 1/8



10740

Features

- Designed for quick engagement on both 6 and 12 point fasteners.

3/8" DRIVE

SOCKETS AND
DRIVE TOOLS

WILLIAMS®



3/8" DRIVE CROWFOOT WRENCH, OPEN END, MM



10790



10791

Product Code	Size (MM)	A Overall Length (Inches)	B Diameter of Head (Inches)	C Thickness of Head (Inches)	D Thickness of Drive End (Inches)	E Length of Centers (Inches)
10759	9	1 1/4	3/4	1/4	1/2	5/8
10760	10	1 1/4	3/4	1/4	1/2	5/8
10761	11	1 3/8	7/8	1/4	1/2	3/4
10762	12	1 3/8	7/8	1/4	1/2	3/4
10763	13	1 1/2	1	1/4	1/2	3/4
10764	14	1 3/4	1 1/8	1/4	1/2	1
10765	15	1 3/4	1 1/8	1/4	1/2	1
10766	16	1 3/4	1 1/4	1/4	1/2	1
10767	17	2	1 1/2	1/4	1/2	1 1/8
10768	18	2	1 1/2	1/4	1/2	1 1/8
10769	19	2	1 1/2	1/4	1/2	1 1/8
10770	20	2 1/8	1 5/8	1/4	1/2	1 1/4
10771	21	2 1/8	1 5/8	1/4	1/2	1 1/4
10772	22	2 1/4	1 5/8	1/4	1/2	1 1/4
10773	23	2 1/4	1 5/8	1/4	1/2	1 1/4
10774	24	2 1/8	2	1/4	1/2	1 1/4

10790 8 Piece 3/8" Drive Crowfoot Wrenches on Clip Rails

Contents Include:

Product Code	Size (mm)	Product Code	Size (mm)	Product Code	Size (mm)
10759	9	10762	12	10765	15
10760	10	10763	13	10766	16
10761	11	10764	14		

10791 8 Piece 3/8" Drive Crowfoot Wrenches on Clip Rails

Contents Include:

Product Code	Size (mm)	Product Code	Size (mm)	Product Code	Size (mm)
10767	17	10770	20	10773	23
10768	18	10771	21	10774	24
10769	19	10772	22		

10792 10 Piece 3/8" Drive Crowfoot Wrenches on Clip Rails

Contents Include:

Product Code	Size (mm)	Product Code	Size (mm)	Product Code	Size (mm)
10760	10	10763	13	10766	16
10761	11	10764	14	10767	17
10762	12	10765	15	10768	18
				10769	19

Features

- Designed for quick engagement on both 6 and 12 point fasteners.

WILLIAMS®



3/8" DRIVE CROWFOOT WRENCH, FLARE NUT, 12 POINT

Satin Chrome Finish, SAE



BCF-26



BCF-32



WSBCF-8

Product Code	Size (Inches)	A Diameter of Head	B Thickness of Head	C Width of Slot	D Length of Centers
BCF20	5/8	1 1/16	1 1/16	1 5/32	1 7/64
BCF22	1 1/16	1 1/32	1 1/16	1 7/32	2 5/32
BCF24	3/4	1 1/8	2 3/32	9/16	5 3/64
BCF26	13/16	1 13/64	2 3/32	5/8	7/8
BCF28	7/8	1 19/64	3/4	1 1/16	1 5/16
BCF30	1 5/16	1 3/8	3/4	2 3/32	1 5/16
BCF32	1	1 29/64	2 5/32	3/4	1 1/64
BCF34	1 1/8	1 17/32	2 5/32	2 5/32	1 3/64

Fed. Spec: ASME B107.21 Type 1 Class 1

WSBCF-8 8 Piece 12 Point Crowfoot Wrench on Clip Rail

Contents Include:

Product Code	Size (Inches)	Product Code	Size (Inches)	Product Code	Size (Inches)	Product Code	Size (Inches)
BCF20	5/8	BCF24	3/4	BCF28	7/8	BCF32	1
BCF22	1 1/16	BCF26	13/16	BCF30	1 5/16	BCF34	1 1/8
BCF24	3/4						



3/8" DRIVE

SOCKETS AND
DRIVE TOOLS

WILLIAMS®



3/8" DRIVE BOLT THRU SOCKETS, 6 POINT, SAE

Product Code	Size (Inches)	Overall Length (Inches)	External Hex Inches
31612BT	3/8	1 7/16	3/4
31614BT	7/16	1 7/16	3/4
31616BT	1/2	1 7/16	3/4
31618BT	9/16	1 7/16	3/4
31620BT	5/8	1 7/16	3/4
31622BT	11/16	1 7/16	3/4
31624BT	3/4	1 7/16	3/4

Features

- SUPERTORQUE® lobular openings for greater turning power without deforming the fastener.
- Designed for quick engagement on both 6 point fasteners.



31612BT

WILLIAMS®



3/8" DRIVE BOLT THRU SOCKETS, 6 POINT, MM

Product Code	Size (mm)	Overall Length (Inches)	External Hex Inches
31708BT	8	1 7/16	3/4
31709BT	9	1 7/16	3/4
31710BT	10	1 7/16	3/4
31711BT	11	1 7/16	3/4
31712BT	12	1 7/16	3/4
31713BT	13	1 7/16	3/4
31714BT	14	1 7/16	3/4
31715BT	15	1 7/16	3/4
31716BT	16	1 7/16	3/4
31717BT	17	1 7/16	3/4
31718BT	18	1 7/16	3/4
31719BT	19	1 7/16	3/4

Features

- Designed for quick engagement on 6 point fasteners.



31708BT

WILLIAMS®



22 PIECE 3/8" DRIVE BOLT THRU SOCKET SET

6 Point Compact Case Tool Set, SAE & MM

Product Code	Description
50671	22 Piece 3/8" Drive Bolt Thru Socket Set

Contents Include:

3/8" Drive Tools:		3/8" Drive Shallow 6-Point Sockets	
Product Code	Description	Product Code	Size (mm)
31018	Locking Flexible Ratchet	31708BT	8
31019	3" Extension	31709BT	9
31020	Adaptor	31710BT	10
		31711BT	11
		31712BT	12
		31713BT	13
		31714BT	14
		31715BT	15
		31716BT	16
		31717BT	17
		31718BT	18
		31719BT	19

Features

- All tools are professional quality, made of high-grade chrome vanadium steel
- Sockets feature SUPERTORQUE® lobular openings for greater turning power without deforming the fastener
- Packed in rugged compact high-density polyethylene (HDPE) cases that are strong and durable yet light in weight
- Ratchet with 7 locking positions and flex head design.



50671

3/8" DRIVE

SOCKETS AND DRIVE TOOLS





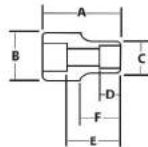
BD-1216 BD-1208



WSBD-9RC



WSBD-13RC



3/8" DRIVE DEEP SOCKETS, 12 POINT, SAE

High-Polished Chrome Finish

Product Code	Size (Inches)	A		B		C		D		E		F
		OAL (Inches)	Drive End Diameter (Inches)	Working End Diameter (Inches)	Broach Depth (Inches)	Bolt Clearance Depth (Inches)	Bolt Clearance Diameter (Inches)	Nose Length (Inches)				
BD-1208	1/4	2 1/8	1 1/16	13/32	7/32	1 1/16	7/32	1 5/8				
BD-1210	5/16	2 1/8	1 1/16	15/32	1/4	1 1/16	5/16	1 5/8				
BD-1212	3/8	2 1/8	1 1/16	9/16	9/32	1 1/16	3/8	1 5/8				
BD-1214	7/16	2 1/8	1 1/16	5/8	9/32	1 1/16	7/16	1 5/8				
BD-1216	1/2	2 1/8	27/32	23/32	11/32	1 1/16	15/32	-				
BD-1218	5/8	2 3/8	25/32	25/32	9/16	1 9/16	17/32	-				
BD-1220	5/8	2 3/8	27/32	27/32	19/32	1 9/16	19/32	-				
BD-1222	1 1/16	2 5/8	19/16	15/16	9/8	1 1/16	2 1/32	-				
BD-1224	3/4	2 5/8	1	1	21/32	1 1/16	23/32	-				
BD-1226	13/16	2 3/4	1 1/8	1 1/8	11/16	2 1/32	25/32	-				
BD-1228	7/8	2 3/4	1 5/8	1 5/8	3/4	2 1/32	27/32	-				
BD-1230	15/16	2 3/4	1 1/4	1 1/4	13/16	2 1/32	27/32	-				
BD-1232	1	2 3/4	1 5/8	1 5/8	27/32	2	31/32	-				

Fed. Spec: ANSI B107.110

WSBD-9RC 9 Piece 3/8" Drive Deep 12 Point Socket Set on Clip Rail

Contents Include:

Product Code	Size (Inches)	Product Code	Size (Inches)	Product Code	Size (Inches)
BD-1212	3/8	BD-1218	5/8	BD-1224	3/4
BD-1214	7/16	BD-1220	5/8	BD-1226	13/16
BD-1216	1/2	BD-1222	1 1/16	BD-1228	7/8

WSBD-13RC 13 Piece 3/8" Drive Deep 12 Point Socket Set on Clip Rail

Contents Include:

Product Code	Size (Inches)	Product Code	Size (Inches)	Product Code	Size (Inches)
BD-1208	1/4	BD-1218	5/8	BD-1228	7/8
BD-1210	5/16	BD-1220	5/8	BD-1230	15/16
BD-1212	3/8	BD-1222	1 1/16	BD-1232	1
BD-1214	7/16	BD-1224	3/4		
BD-1216	1/2	BD-1226	13/16		



Features

- SUPERTORQUE® lobular openings for greater turning power without deforming the fastener.
- Designed for quick engagement on both 6 and 12 point fasteners.

3/8" DRIVE

SOCKETS AND DRIVE TOOLS

3/8" DRIVE DEEP SOCKETS, 12 POINT, SAE

High-Polished Chrome Finish

Product Code	Size (Inches)	A OAL (Inches)	B Drive End Diameter (Inches)	C Working End Diameter (Inches)	D Broach Depth (Inches)	E Bolt Clearance Depth (Inches)	F Bolt Clearance Diameter (Inches)	Nose Length (Inches)
31408	1/4	2 1/2	1 1/16	7/16	1 1/32	1 11/16	7/32	1 1/16
31410	5/16	2 1/2	1 1/16	13/32	3/8	1 11/16	5/16	1 1/16
31412	3/8	2 1/2	1 1/16	9/16	3/8	1 11/16	3/8	1 1/16
31414	7/16	2 1/2	1 1/16	5/8	1 1/32	1 11/16	7/16	1 1/16
31416	1/2	2 1/2	3/4	3/4	1 1/32	1 11/16	1 1/2	-
31418	5/8	2 1/2	25/32	25/32	17/32	1 9/16	1 1/2	-
31420	3/4	2 1/2	7/8	7/8	1 1/32	1 9/16	1 1/2	-
31422	7/8	2 1/2	1 1/16	1 1/16	1/2	1 11/16	2 1/32	-
31424	1	2 1/2	1	1	9/16	1 11/16	2 1/32	-
31426	1 1/16	2 1/2	1 1/8	1 1/8	9/16	2 1/32	2 1/32	-
31428	1 1/8	2 1/2	1 3/16	1 3/16	2 1/32	2 1/32	2 1/32	-
31430	1 1/4	2 1/2	1 1/4	1 1/4	2 1/32	2 1/32	2 1/32	-
31432	1 1/2	2 1/2	1 5/16	1 5/16	1 1/16	2	3 1/32	-

Fed. Spec. ANSI B107.110

31926 9 Piece 3/8" Drive Deep 12 Point Socket Set on Clip Rail

Contents Include:

Product Code	Size (Inches)	Product Code	Size (Inches)	Product Code	Size (Inches)
31408	1/4	31414	7/16	31420	3/4
31410	5/16	31416	1/2	31422	1 1/16
31412	3/8	31418	9/16	31424	3/4

31928 13 Piece 3/8" Drive Deep 12 Point Socket Set on Clip Rail

Contents Include:

Product Code	Size (Inches)	Product Code	Size (Inches)	Product Code	Size (Inches)
31408	1/4	31418	9/16	31428	7/8
31410	5/16	31420	3/4	31430	1 1/8
31412	3/8	31422	1 1/16	31432	1
31414	7/16	31424	3/4		
31416	1/2	31426	13/16		

Features

- SUPERTORQUE® lobular openings for greater turning power without deforming the fastener.
- Designed for quick engagement on both 6 and 12 point fasteners.



31416 31408



31926



31928

3/8" DRIVE DEEP SOCKETS, 6 POINT, SAE

High-Polished Chrome Finish

Product Code	Size (Inches)	A OAL (Inches)	B Drive End Diameter (Inches)	C Working End Diameter (Inches)	D Broach Depth (Inches)	E Bolt Clearance Depth (Inches)	F Bolt Clearance Diameter (Inches)	Nose Length (Inches)
BD-608	1/4	2 1/8	1 1/16	13/32	1/4	1 11/16	7/32	1 5/8
BD-610	5/16	2 1/8	1 1/16	7/16	9/32	1 11/16	5/16	1 5/8
BD-611	1 1/32	2 1/8	1 1/16	1/2	1/4	1 11/16	1 1/32	1 5/8
BD-612	3/8	2 1/8	1 1/16	9/16	5/16	1 11/16	3/8	1 5/8
BD-614	7/16	2 1/8	1 1/16	1 1/16	3/8	1 11/16	7/16	1 5/8
BD-616	1/2	2 1/8	23/32	23/32	7/16	1 11/16	1 1/2	-
BD-618	5/8	2 1/8	25/32	25/32	7/16	1 9/16	1 1/2	-
BD-620	3/4	2 3/8	27/32	27/32	1/2	1 9/16	1 1/2	-
BD-622	7/8	2 3/8	1 1/16	1 1/16	17/32	1 3/4	2 1/32	-
BD-624	1	2 3/8	1	1	5/8	1 3/4	2 1/32	-
BD-626	1 1/16	2 3/4	1 1/8	1 1/8	1 1/16	1 27/32	2 1/32	-
BD-628	1 1/8	2 3/4	1 5/16	1 5/16	2 1/32	1 27/32	2 1/32	-
BD-630	1 1/4	2 3/4	1 1/4	1 1/4	2 1/32	2 1/32	2 1/32	-
BD-632	1 1/2	2 3/4	1 5/16	1 5/16	1 1/16	2 1/32	2 1/32	-

Fed. Spec. ANSI B107.110

WSBD-13HRC 13 Piece 3/8" Drive Deep 6 Point Socket Set on Clip Rail

Contents Include:

Product Code	Size (Inches)	Product Code	Size (Inches)	Product Code	Size (Inches)
BD-608	1/4	BD-618	5/8	BD-628	7/8
BD-610	5/16	BD-620	3/4	BD-630	1 1/8
BD-612	3/8	BD-622	1 1/16	BD-632	1
BD-614	7/16	BD-624	3/4		
BD-616	1/2	BD-626	13/16		

Features

- SUPERTORQUE® lobular openings for greater turning power without deforming the fastener.
- Designed for maximum engagement on 6 point fasteners.



BD-616 BD-608



WSBD-13HRC





31316 31308



31940



31941



31303



31301



3/8" DRIVE DEEP SOCKETS, 6 POINT, SAE

High-Polished Chrome Finish

Product Code	Size (Inches)	A OAL (Inches)	B Drive End Diameter (Inches)	C Working End Diameter (Inches)	D Broach Depth (Inches)	E Bolt Clearance Depth (Inches)	Bolt Clearance Diameter (Inches)	F Nose Length (Inches)
31308	1/4	2 1/2	1 1/16	7/16	1 1/32	1 11/16	7/32	1 1/16
31310	5/16	2 1/2	1 1/16	7/16	3/8	1 11/16	5/16	1 1/16
31312	3/8	2 1/2	1 1/16	9/16	3/8	1 11/16	3/8	1 1/16
31314	7/16	2 1/2	1 1/16	9/16	1 1/32	1 11/16	7/16	1 1/16
31316	1/2	2 1/2	3/4	3/4	1 1/32	1 11/16	1 1/32	-
31318	5/8	2 1/2	25/32	25/32	1 1/32	1 11/16	1 1/32	-
31320	3/4	2 1/2	7/8	7/8	1 1/32	1 11/16	1 1/32	-
31322	1 1/16	2 1/2	15/16	15/16	1/2	1 11/16	2 1/32	-
31324	3/4	2 1/2	1	1	9/16	1 11/16	2 1/32	-
31326	13/16	2 1/2	1 1/8	1 1/8	5/8	2 1/32	2 1/32	-
31328	7/8	2 1/2	1 3/16	1 3/16	2 1/32	2 1/32	2 1/32	-
31330	15/16	2 1/2	1 1/4	1 1/4	2 1/32	2 1/32	2 1/32	-
31332	1	2 1/2	1 5/16	1 5/16	1 1/16	2	3 1/32	-

Fed. Spec: ANSI B107.110

31940 9 Piece 3/8" Drive Deep 6 Point Socket Set on Clip Rail

Contents Include:

Product Code	Size (Inches)	Product Code	Size (Inches)	Product Code	Size (Inches)
31308	1/4	31314	7/16	31320	3/4
31310	5/16	31316	1/2	31322	1 1/16
31312	3/8	31318	5/8	31324	3/4

31941 13 Piece 3/8" Drive Deep 6 Point Socket Set on Clip Rail

Contents Include:

Product Code	Size (Inches)	Product Code	Size (Inches)	Product Code	Size (Inches)
31308	1/4	31318	5/8	31328	7/8
31310	5/16	31320	3/4	31330	15/16
31312	3/8	31322	1 1/16	31332	1
31314	7/16	31324	3/4		
31316	1/2	31326	13/16		

Features

- SUPERTORQUE® lobular openings for greater turning power without deforming the fastener.
- Designed for quick engagement on 6 point fasteners.



3/8" DRIVE SPARK PLUG SOCKETS, 6 POINT, SAE

High-Polished Chrome Finish

Product Code	Size (Inches)	A OAL (Inches)	B Drive End Diameter (Inches)	C Working End Diameter (Inches)	D Broach Depth (Inches)	E Bolt Clearance Depth (Inches)	Bolt Clearance Diameter (Inches)	F Nose Length (Inches)
31301	5/8	2 27/32	1 1/8	27/32	1 1/2	2 29/32	1 1/8	NA
31303	13/16	2 23/32	1 3/8	1 1/8	1 1/2	1 1/2	7/8	NA

Fed. Spec: ANSI B107.110

Features

- Rubber insert holds spark plug and prevents damage to insulator.

3/8" DRIVE SHALLOW SOCKETS, 12 POINT, METRIC

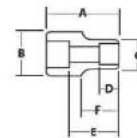
High-Polished Chrome Finish

Product Code	Size (MM)	A		B		C		D		E		F
		OAL (Inches)	OAL (MM)	Drive End Diameter (Inches)	Drive End Diameter (MM)	Working End Diameter (Inches)	Working End Diameter (MM)	Broach Depth (Inches)	Broach Depth (MM)	Bolt Clearance Depth (Inches)	Bolt Clearance Depth (MM)	
BM-1206	6	1 1/32	15.875	1 1/16	14.950	1 3/32	15.238	7/32	17.780	9/16	14.288	1 7/32
BM-1207	7	1 1/32	17.780	1 1/16	16.825	1 3/32	17.113	7/32	17.780	9/16	14.288	1 7/32
BM-1208	8	1 1/32	19.750	1 1/16	18.775	1 5/32	19.063	1/4	25.400	9/16	14.288	1 7/32
BM-1209	9	1 1/32	21.725	1 1/16	20.750	1 1/2	38.100	9/32	22.860	9/16	14.288	1 7/32
BM-1210	10	1 1/32	23.700	1 1/16	22.725	9/16	23.175	9/32	23.175	9/16	14.288	1 7/32
BM-1211	11	1 1/32	25.675	1 1/16	24.700	5/8	31.750	9/32	23.175	9/16	14.288	1 7/32
BM-1212	12	1 1/32	27.650	1 1/16	26.675	1 1/32	27.143	1 1/32	27.143	9/16	14.288	1 7/32
BM-1213	13	1 1/32	29.625	1 1/16	28.650	1 1/8	29.175	1 1/32	29.175	9/16	14.288	-
BM-1214	14	1 1/32	31.600	1 1/16	30.625	1 1/4	31.750	1 1/32	31.750	9/16	14.288	-
BM-1215	15	1 1/32	33.575	1 1/16	32.600	1 1/2	38.100	1 1/32	38.100	9/16	14.288	-
BM-1216	16	1 1/8	35.550	1 1/16	34.575	1 5/8	40.125	1 1/8	40.125	9/16	14.288	-
BM-1217	17	1 1/32	37.525	1 1/16	36.550	1 3/4	42.150	1 1/8	42.150	9/16	14.288	-
BM-1218	18	1 1/32	39.500	1 1/16	38.525	1 7/8	44.175	1 1/8	44.175	9/16	14.288	-
BM-1219	19	1 1/8	41.475	1 1/16	40.500	2	50.800	1 1/8	50.800	9/16	14.288	-
BM-1220	20	1 1/32	43.450	1 1/16	42.475	2 1/8	54.125	1 1/8	54.125	9/16	14.288	-
BM-1221	21	1 1/4	45.425	1 1/16	44.450	2 3/8	59.375	1 1/8	59.375	9/16	14.288	-
BM-1222	22	1 1/32	47.400	1 1/16	46.425	2 1/2	63.500	1 1/8	63.500	9/16	14.288	-
BM-1223	23	1 5/16	49.375	1 1/16	48.400	2 7/8	71.125	1 1/8	71.125	9/16	14.288	-
BM-1224	24	1 3/8	51.350	1 1/16	50.375	3	76.200	1 1/8	76.200	9/16	14.288	-
BM-1226	26	1 7/16	57.150	1 1/16	56.175	3 1/2	89.175	1 1/8	89.175	9/16	14.288	-

Fed. Spec: ANSI B107.110



BM-1212 BM-1206



MSB-12RC 12 Piece 3/8" Drive Shallow 12 Point Socket Set on Clip Rail

Contents Include:

Product Code	Size (MM)	Product Code	Size (MM)	Product Code	Size (MM)
BM-1208	8	BM-1212	12	BM-1216	16
BM-1209	9	BM-1213	13	BM-1217	17
BM-1210	10	BM-1214	14	BM-1218	18
BM-1211	11	BM-1215	15	BM-1219	19

MSB-17RC 17 Piece 3/8" Drive Shallow 12 Point Socket Set on Clip Rail

Contents Include:

Product Code	Size (MM)	Product Code	Size (MM)	Product Code	Size (MM)	Product Code	Size (MM)
BM-1206	6	BM-1211	11	BM-1216	16	BM-1221	21
BM-1207	7	BM-1212	12	BM-1217	17	BM-1222	22
BM-1208	8	BM-1213	13	BM-1218	18		
BM-1209	9	BM-1214	14	BM-1219	19		
BM-1210	10	BM-1215	15	BM-1220	20		



MSB-12RC

MSB-20RC 20 Piece 3/8" Drive Shallow 12 Point Socket Set on Clip Rail

Contents Include:

Product Code	Size (MM)	Product Code	Size (MM)	Product Code	Size (MM)	Product Code	Size (MM)
BM-1206	6	BM-1211	11	BM-1216	16	BM-1221	21
BM-1207	7	BM-1212	12	BM-1217	17	BM-1222	22
BM-1208	8	BM-1213	13	BM-1218	18	BM-1223	23
BM-1209	9	BM-1214	14	BM-1219	19	BM-1224	24
BM-1210	10	BM-1215	15	BM-1220	20	BM-1226	26



MSB-20RC

Features

- SUPERTORQUE[®] lobular openings for greater turning power without deforming the fastener.
- Designed for quick engagement on both 6 and 12 point fasteners.



MSB-20RC





3/8" DRIVE SHALLOW SOCKETS, 6 POINT, METRIC

High-Polished Chrome Finish



Product Code	Size (MM)	A OAL (Inches)	B Drive End Diameter (Inches)	C Working End Diameter (Inches)	D Broach Depth (Inches)	E Bolt Clearance Depth (Inches)	Bolt Clearance Diameter (Inches)	F Nose Length (Inches)
BM-605½	5 ½	1 ½	1 ¼	1 ¼	7/32	9/16	3/16	1 7/32
BM-606	6	1 ½	1 ¼	1 ¼	7/32	9/16	3/16	1 7/32
BM-607	7	1 ½	1 ¼	1 ¼	7/32	9/16	3/16	1 7/32
BM-608	8	1 ½	1 ¼	1 ¼	1/4	9/16	3/16	1 7/32
BM-609	9	1 ½	1 ¼	1 ¼	9/32	9/16	3/16	1 7/32
BM-610	10	1 ½	1 ¼	1 ¼	9/32	9/16	3/16	1 7/32
BM-611	11	1 ½	1 ¼	1 ¼	5/8	9/16	3/16	1 7/32
BM-612	12	1 ½	1 ¼	1 ¼	1 1/32	9/16	3/16	1 7/32
BM-613	13	1 ½	1 ¼	1 ¼	1 1/32	9/16	3/16	-
BM-614	14	1 ½	1 ¼	1 ¼	7/16	1 7/32	3/16	-
BM-615	15	1 ½	1 ¼	1 ¼	19/32	1 7/32	3/16	-
BM-616	16	1 ½	1 ¼	1 ¼	19/32	5/8	3/16	-
BM-617	17	1 ½	1 ¼	1 ¼	29/32	5/8	3/16	-
BM-618	18	1 ½	1 ¼	1 ¼	5/8	2 1/32	3/16	-
BM-619	19	1 ½	1 ¼	1 ¼	2 1/32	1 1/16	29/32	-
BM-620	20	1 ½	1 ¼	1 ¼	1 1/32	1 1/16	29/32	-
BM-621	21	1 ½	1 ¼	1 ¼	23/32	23/32	3/16	-
BM-622	22	1 ½	1 ¼	1 ¼	3/4	3/4	3/16	-
BM-623	23	1 ½	1 ¼	1 ¼	3/4	25/32	7/8	-
BM-624	24	1 ½	1 ¼	1 ¼	13/16	27/32	7/8	-

Fed. Spec: ANSI B107.110

MSB-12HRC 12 Piece 3/8" Drive Shallow 6 Point Socket Set on Clip Rail

Contents Include:

Product Code	Size (MM)	Product Code	Size (MM)	Product Code	Size (MM)
BM-608	8	BM-612	12	BM-616	16
BM-609	9	BM-613	13	BM-617	17
BM-610	10	BM-614	14	BM-618	18
BM-611	11	BM-615	15	BM-619	19

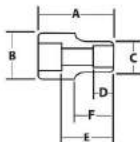
MSB-20HRC 20 Piece 3/8" Drive Shallow 6 Point Socket Set on Clip Rail

Contents Include:

Product Code	Size (MM)	Product Code	Size (MM)	Product Code	Size (MM)	Product Code	Size (MM)
BM-605½	5 ½	BM-610	10	BM-615	15	BM-620	20
BM-606	6	BM-611	11	BM-616	16	BM-621	21
BM-607	7	BM-612	12	BM-617	17	BM-622	22
BM-608	8	BM-613	13	BM-618	18	BM-623	23
BM-609	9	BM-614	14	BM-619	19	BM-624	24

Features

- SUPERTORQUE® lobular openings for greater turning power without deforming the fastener.
- Designed for maximum engagement on 6 point fasteners.



MSB-12HRC



MSB-20RC

3/8" DRIVE

SOCKETS AND
DRIVE TOOLS

3/8" DRIVE SHALLOW SOCKETS, 12 POINT, METRIC

High-Polished Chrome Finish

Product Code	Size (MM)	A		B		C		D		E		F	
		OAL (Inches)	Drive End Diameter (Inches)	Working End Diameter (Inches)	Broach Depth (Inches)	Bolt Clearance Depth (Inches)	Bolt Clearance Diameter (Inches)	Nose Length (Inches)					
31606	6	1	11/16	3/8	17/32	7/32	1/16	9/16					
31607	7	1	11/16	7/16	5/16	17/32	7/32	9/16					
31608	8	1	11/16	15/32	11/32	1/2	1/4	9/16					
31609	9	1	11/16	17/32	3/8	17/32	9/32	9/16					
31610	10	1	11/16	9/16	11/32	15/32	3/8	9/16					
31611	11	1	11/16	5/8	11/32	1/2	13/32	9/16					
31612	12	1	11/16	11/16	3/8	9/16	7/16	-					
31613	13	1	3/4	3/4	3/8	9/16	1/2	-					
31614	14	1 1/16	25/32	25/32	17/32	17/32	-	-					
31615	15	1 1/16	13/16	13/16	17/32	17/32	-	-					
31616	16	1 1/16	7/8	7/8	17/32	17/32	-	-					
31617	17	1 1/16	15/16	15/16	17/32	17/32	-	-					
31618	18	1 1/16	31/32	31/32	17/32	17/32	-	-					
31619	19	1 5/32	1	1	5/8	5/8	-	-					

Fed. Spec: ANSI B107.110



31942 8 Piece 3/8" Drive Shallow 12 Point Socket Set on Clip Rail

Contents Include:

Product Code	Size (MM)	Product Code	Size (MM)	Product Code	Size (MM)
31610	10	31613	13	31616	16
31611	11	31614	14	31617	17
31612	12	31615	15		

31943 14 Piece 3/8" Drive Shallow 12 Point Socket Set on Clip Rail

Contents Include:

Product Code	Size (MM)	Product Code	Size (MM)	Product Code	Size (MM)
31606	6	31611	11	31616	16
31607	7	31612	12	31617	17
31608	8	31613	13	31618	18
31609	9	31614	14	31619	19
31610	10	31615	15		

Features

- SUPERTORQUE® lobular openings for greater turning power without deforming the fastener.
- Designed for maximum engagement on 12 point fasteners.



31942



31943

3/8" DRIVE

SOCKETS AND DRIVE TOOLS

302

