



57 PIECE 1/2" DRIVE SOCKET AND DRIVE TOOL SET

8 & 12 Point SAE, with Metal Box

Product Code	Description
WSS-57TB	57 Piece Tool Set with TB-6124A Metal Tool Box
WSS-57F	57 Piece Tool Set Only

Contents Include:

Drive Tools:		Drive Tools:	
Product Code	Description	Product Code	Description
S-15A	18" Speeder Handle	S-70	Ratchet Spinner Disk
S-20A	12" Sliding T-Handle	S-102P	2" Extension
S-40AA	10 15/16" Flex Handle	S-110P	5" Extension
S-41AA	15 1/2" Flex Handle	S-115P	10" Extension
S-52EHA	10 3/8" Enclosed Head Ratchet	S-140A	Universal Joint
S-52EHLA	15" Enclosed Head Ratchet		

Shallow 12-Point Sockets

Product Code	Size (Inches)
ST-1212	3/8
ST-1214	7/16
ST-1216	1/2
ST-1218	9/16
ST-1220	5/8
ST-1222	11/16
ST-1224	3/4
ST-1226	13/16
ST-1228	7/8
ST-1230	15/16
ST-1232	1
ST-1234	1 1/16
ST-1236	1 1/8
ST-1238	1 3/16
ST-1240	1 1/4
ST-1242	1 5/16
ST-1244	1 3/8
ST-1246	1 7/16
ST-1248	1 1/2

Standard Hex Bit Sockets

Product Code	Size (Inches)
SA-8A	1/4
SA-10A	5/16
SA-12A	3/8
SA-16A	1/2
SA-18A	9/16
SA-20A	5/8

Deep 12-Point Sockets

Product Code	Size (Inches)
SD-1216	1/2
SD-1218	9/16
SD-1220	5/8
SD-1222	11/16
SD-1224	3/4
SD-1226	13/16
SD-1228	7/8
SD-1230	15/16
SD-1232	1
SD-1234	1 1/16
SD-1236	1 1/8

Shallow 8-Point Sockets

Product Code	Size (Inches)
ST-812	3/8
ST-814	7/16
ST-816	1/2
ST-818	9/16
ST-820	5/8
ST-822	11/16
ST-824	3/4
ST-826	13/16
ST-828	7/8
ST-832	1



WSS-57TB



TB-6124A

Features

- All tools are professional quality, made of high-grade chrome vanadium steel.
- Sockets feature SUPERTORQUE® lobular openings for greater turning power without deforming the fastener.
- Metal tool box made for years of rugged use.





WSS-38FTB

Features

- All tools are professional quality, made of high-grade chrome vanadium steel.
- Sockets feature SUPERTORQUE® lobular openings for greater turning power without deforming the fastener.
- Metal tool box made for years of rugged use.

WILLIAMS



38 PIECE 1/2" DRIVE SOCKET AND DRIVE TOOL SET

12 Point SAE, with Metal Box

Product Code	Description
WSS-38FTB	38 Piece Tool Set with TB-104 Metal Tool Box
WSS-38F	38 Piece Tool Set Only - Packed in Keep Safe Foam System

Contents Include:

Drive Tools:		Drive Tools:	
Product Code	Description	Product Code	Description
S-15A	18" Speeder Handle	S-140A	Universal Joint
S-41AA	15 1/2" Flex Handle	S-102P	2" Extension
S-52EHA	10 3/8" Enclosed Head Ratchet	S-110P	5" Extension
S-70	Ratchet Spinner Disk	S-115P	10" Extension

Shallow 12-Point Sockets

Product Code	Size (Inches)	Product Code	Size (Inches)
ST-1212	3/8	ST-1244	1 3/8
ST-1214	7/16	ST-1246	1 1/2
ST-1216	1/2	ST-1248	1 1/2
ST-1218	9/16		
ST-1220	5/8		
ST-1222	11/16		
ST-1224	3/4		
ST-1226	13/16		
ST-1228	7/8		
ST-1230	15/16		
ST-1232	1		
ST-1234	1 1/16		
ST-1236	1 1/8		
ST-1238	1 3/16		
ST-1240	1 1/4		
ST-1242	1 5/16		

Shallow 12-Point Sockets

Product Code	Size (Inches)
SD-1216	1/2
SD-1218	9/16
SD-1220	5/8
SD-1222	11/16
SD-1224	3/4
SD-1226	13/16
SD-1228	7/8
SD-1230	15/16
SD-1232	1
SD-1234	1 1/16
SD-1236	1 1/8

Deep 12-Point Sockets

Product Code	Size (Inches)
SD-1216	1/2
SD-1218	9/16
SD-1220	5/8
SD-1222	11/16
SD-1224	3/4
SD-1226	13/16
SD-1228	7/8
SD-1230	15/16
SD-1232	1
SD-1234	1 1/16
SD-1236	1 1/8



WSS-30FTB

Features

- Keep-Safe-Foam system keeps tools organized and helps prevent loss
- All tools are professional quality, made of high-grade chrome vanadium steel
- Sockets feature SUPERTORQUE® lobular openings for greater turning power without deforming the fastener
- Metal tool box made for years of rugged use.

WILLIAMS



30 PIECE 1/2" DRIVE SOCKET AND DRIVE TOOL SET

12 Point SAE, with Metal Box

Product Code	Description
WSS-30FTB	30 Piece Tool Set with TB-104 Metal Tool Box
WSS-30F	30 Piece Tool Set Only - Packed in Keep Safe Foam System

Contents Include:

Drive Tools:		Drive Tools:	
Product Code	Description	Product Code	Description
S-41AA	15 1/2" Flex Handle	S-110P	5" Extension
S-52EHA	10 3/8" Enclosed Head Ratchet	S-115P	10" Extension
S-140A	Universal Joint		

Shallow 12-Point Sockets

Product Code	Size (Inches)	Product Code	Size (Inches)
ST-1212	3/8	SD-1216	1/2
ST-1214	7/16	SD-1218	9/16
ST-1216	1/2	SD-1220	5/8
ST-1218	9/16	SD-1222	11/16
ST-1220	5/8	SD-1224	3/4
ST-1222	11/16	SD-1226	13/16
ST-1224	3/4	SD-1228	7/8
ST-1226	13/16	SD-1230	15/16
ST-1228	7/8	SD-1232	1
ST-1230	15/16	SD-1234	1 1/16
ST-1232	1	SD-1236	1 1/8
ST-1234	1 1/16		
ST-1236	1 1/8		
ST-1240	1 1/4		



1/2" DRIVE

SOCKETS AND
DRIVE TOOLS

WILLIAMS



22 PIECE 1/2" DRIVE SOCKET AND DRIVE TOOL SET

12 Point SAE, Packed in Exclusive Keep-Safe-Foam System with Metal Box

Product Code	Description
WSS-22FTB	22 Piece Tool Set with TB-104 Metal Tool Box
WSS-22F	22 Piece Tool Set Only - Packed in Keep Safe Foam System

Contents Include:

Drive Tools:		Drive Tools:	
Product Code	Description	Product Code	Description
S-15A	18" Speeder Handle	S-102P	2" Extension
S-41AA	15 1/2" Flex Handle	S-110P	5" Extension
S-52EHA	10 3/8" Enclosed Head Ratchet	S-115P	10" Extension
S-140A	Universal Joint		

Shallow 12-Point Sockets

Product Code	Size (Inches)	Product Code	Size (Inches)
ST-1212	3/8	ST-1228	7/8
ST-1214	7/16	ST-1230	15/16
ST-1216	1/2	ST-1232	1
ST-1218	9/16	ST-1234	1 1/16
ST-1220	5/8	ST-1236	1 1/8
ST-1222	11/16	ST-1238	1 3/16
ST-1224	3/4	ST-1240	1 1/4
ST-1226	13/16		

Features

- Keep-Safe-Foam system keeps tools organized and helps prevent loss.
- All tools are professional quality, made of high-grade chrome vanadium steel.
- Sockets feature SUPERTORQUE® lobular openings for greater turning power without deforming the fastener.
- Metal tool box made for years of rugged use.



WSS-22FTB

WILLIAMS



19 PIECE 1/2" DRIVE SOCKET AND DRIVE TOOL SET

12 Point SAE, Packed in Exclusive Keep-Safe-Foam System with Metal Box

Product Code	Description
WSS-19FTB	19 Piece Tool Set with TB-103 Metal Tool Box
WSS-19F	19 Piece Tool Set Only - Packed in Keep Safe Foam System

Contents Include:

Drive Tools:		Drive Tools:	
Product Code	Description	Product Code	Description
S-41AA	15 1/2" Flex Handle	S-110P	5" Extension
S-52EHA	10 3/8" Enclosed Head Ratchet	S-140A	Universal Joint

Shallow 12-Point Sockets

Product Code	Size (Inches)	Product Code	Size (Inches)
ST-1212	3/8	ST-1228	7/8
ST-1214	7/16	ST-1230	15/16
ST-1216	1/2	ST-1232	1
ST-1218	9/16	ST-1234	1 1/16
ST-1220	5/8	ST-1236	1 1/8
ST-1222	11/16	ST-1238	1 3/16
ST-1224	3/4	ST-1240	1 1/4
ST-1226	13/16		

Features

- Keep-Safe-Foam system keeps tools organized and helps prevent loss.
- All tools are professional quality, made of high-grade chrome vanadium steel.
- Sockets feature SUPERTORQUE® lobular openings for greater turning power without deforming the fastener.
- Metal tool box made for years of rugged use.



WSS-19FTB

1/2" DRIVE

SOCKETS AND
DRIVE TOOLS

326





WSS-18HFTB

WILLIAMS®



18 PIECE 1/2" DRIVE SOCKET AND DRIVE TOOL SET

6 Point SAE, Packed in Exclusive Keep-Safe-Foam System with Metal Box

Product Code	Description
WSS-18HFTB	18 Piece Tool Set with TB-103 Metal Tool Box
WSS-18HF	18 Piece Tool Set Only - Packed in Keep Safe Foam System

Contents Include:

Drive Tools:		Drive Tools:	
Product Code	Description	Product Code	Description
S-41AA	15 1/2" Flex Handle	S-110P	5" Extension
S-52EHA	10 3/8" Enclosed Head Ratchet	S-140A	Universal Joint
Shallow 6-Point Sockets		Shallow 6-Point Sockets	
Product Code	Size (Inches)	Product Code	Size (Inches)
ST-612	3/8	ST-626	1 1/8
ST-614	7/16	ST-628	7/8
ST-616	1/2	ST-630	15/16
ST-618	9/16	ST-632	1
ST-620	5/8	ST-634	1 1/16
ST-622	1 1/16	ST-636	1 1/8
ST-624	3/4	ST-640	1 1/4

Features

- Keep-Safe-Foam system keeps tools organized and helps prevent loss.
- All tools are professional quality, made of high-grade chrome vanadium steel.
- Sockets feature SUPERTORQUE® lobular openings for greater turning power without deforming the fastener.
- Metal tool box made for years of rugged use.



WSS-15FTB

WILLIAMS®



15 PIECE 1/2" DRIVE SOCKET AND DRIVE TOOL SET

12 Point SAE, Packed in Exclusive Keep-Safe-Foam System with Metal Box

Product Code	Description
WSS-15FTB	15 Piece Tool Set with TB-103 Metal Tool Box
WSS-15F	15 Piece Tool Set Only - Packed in Keep Safe Foam System

Contents Include:

Drive Tools:		Shallow 12-Point Sockets	
Product Code	Description	Product Code	Size (Inches)
S-41AA	15 1/2" Flex Handle	ST-1214	7/16
S-52EHA	10 3/8" Enclosed Head Ratchet	ST-1216	1/2
S-110P	5" Extension	ST-1218	9/16
S-115P	10" Extension	ST-1220	5/8
S-140A	Universal Joint	ST-1222	1 1/16
		ST-1224	3/4
		ST-1226	13/16
		ST-1228	7/8
		ST-1230	15/16
		ST-1232	1

Features

- Keep-Safe-Foam system keeps tools organized and helps prevent loss.
- All tools are professional quality, made of high-grade chrome vanadium steel.
- Sockets feature SUPERTORQUE® lobular openings for greater turning power without deforming the fastener.
- Metal tool box made for years of rugged use.



1/2" DRIVE

SOCKETS AND
DRIVE TOOLS

WILLIAMS



47 PIECE 1/2" DRIVE SOCKET AND DRIVE TOOL SET

12 Point Metric, with Metal Box

Product Code	Description
MSS-47TB	47 Piece Tool Set with TB-6124A Metal Tool Box (Keep Safe Foam Not Included)
MSS-47F	47 Piece Tool Set Only - Packed in Keep Safe Foam System

Contents Include:

Drive Tools:		Shallow 12-Point Sockets	
Product Code	Description	Product Code	Size (MM)
S-15A	18" Speeder Handle	STM-1210	10
S-20A	12" Sliding T-Handle	STM-1211	11
S-40AA	10 13/16" Flex Handle	STM-1212	12
S-41AA	15 1/2" Flex Handle	STM-1213	13
S-52EHA	10 3/8" Enclosed Head Ratchet	STM-1214	14
S-60D	Stud Remover	STM-1215	15
S-70	Ratchet Spinner Disk	STM-1216	16
S-102P	2" Extension	STM-1217	17
S-110P	5" Extension	STM-1218	18
S-115P	10" Extension	STM-1219	19
S-140A	Universal Joint	STM-1220	20
		STM-1221	21
		STM-1222	22
		STM-1223	23
		STM-1224	24
		STM-1225	25
		STM-1226	26
		STM-1227	27
		STM-1228	28
		STM-1229	29
		STM-1230	30
		STM-1232	32
		STM-1234	34
		STM-1236	36

Deep 12-Point Sockets

Product Code	Size (MM)
SMD-1213	13
SMD-1214	14
SMD-1215	15
SMD-1216	16
SMD-1217	17
SMD-1218	18
SMD-1219	19
SMD-1221	21
SMD-1222	22
SMD-1224	24
SMD-1227	27
SMD-1230	30



MSS-47TB

Features

- All tools are professional quality, made of high-grade chrome vanadium steel
- Sockets feature SUPERTORQUE® lobular openings for greater turning power without deforming the fastener.
- Metal tool box made for years of rugged use.

WILLIAMS



33 PIECE 1/2" DRIVE SOCKET AND DRIVE TOOL SET

12 Point Metric, with Metal Box

Product Code	Description
MSS-33FTB	33 Piece Tool Set with TB-104 Metal Tool Box
MSS-33F	33 Piece Tool Set Only - Packed in Keep Safe Foam System

Contents Include:

Drive Tools:		Shallow 12-Point Sockets	
Product Code	Description	Product Code	Size (MM)
S-41AA	15 1/2" Flex Handle	STM-1210	10
S-52EHA	10 3/8" Enclosed Head Ratchet	STM-1211	11
S-102P	2" Extension	STM-1212	12
S-110P	5" Extension	STM-1213	13
S-115P	10" Extension	STM-1214	14
S-140A	Universal Joint	STM-1215	15
		STM-1216	16
		STM-1217	17
		STM-1218	18
		STM-1219	19
		STM-1220	20
		STM-1221	21
		STM-1222	22
		STM-1223	23
		STM-1224	24

Deep 12-Point Sockets

Product Code	Size (MM)
SMD-1213	13
SMD-1214	14
SMD-1215	15
SMD-1216	16
SMD-1217	17
SMD-1218	18
SMD-1219	19
SMD-1221	21
SMD-1222	22
SMD-1224	24
SMD-1227	27
SMD-1230	30



MSS-33FTB

Features

- All tools are professional quality, made of high-grade chrome vanadium steel.
- Sockets feature SUPERTORQUE® lobular openings for greater turning power without deforming the fastener.
- Metal tool box made for years of rugged use.

1/2" DRIVE

SOCKETS AND
DRIVE TOOLS

328





29 PIECE 1/2" DRIVE SOCKET AND DRIVE TOOL SET

12 Point Metric, Packed in Exclusive Keep-Safe-Foam System with Metal Box

Product Code	Description
MSS-29FTB	29 Piece Tool Set with TB-104 Metal Tool Box
MSS-29F	29 Piece Tool Set Only - Packed in Keep Safe Foam System

Contents Include:

Drive Tools:		Drive Tools:	
Product Code	Description	Product Code	Description
S-41AA	15 1/2" Flex Handle	S-110P	5" Extension
S-52EHA	10 3/8" Enclosed Head Ratchet	S-115P	10" Extension
S-102P	2" Extension	S-140A	Universal Joint

Shallow 12-Point Sockets

Product Code	Size (MM)	Product Code	Size (MM)
STM-1210	10	STM-1222	22
STM-1211	11	STM-1223	23
STM-1212	12	STM-1224	24
STM-1213	13	STM-1225	25
STM-1214	14	STM-1226	26
STM-1215	15	STM-1227	27
STM-1216	16	STM-1228	28
STM-1217	17	STM-1229	29
STM-1218	18	STM-1230	30
STM-1219	19	STM-1232	32
STM-1220	20	STM-1234	34
STM-1221	21		

Features

- Keep-Safe-Foam system keeps tools organized and helps prevent loss.
- All tools are professional quality, made of high-grade chrome vanadium steel.
- Sockets feature SUPERTORQUE® lobular openings for greater turning power without deforming the fastener
- Metal tool box made for years of rugged use.



MSS-29FTB



22 PIECE 1/2" DRIVE SOCKET AND DRIVE TOOL SET

12 Point Metric, Packed in Exclusive Keep-Safe-Foam System with Metal Box

Product Code	Description
MSS-22FTB	22 Piece Tool Set with TB-104 Metal Tool Box
MSS-22F	22 Piece Tool Set Only - Packed in Keep Safe Foam System

Contents Include:

Drive Tools:		Drive Tools:	
Product Code	Description	Product Code	Description
S-41AA	15 1/2" Flex Handle	S-115P	10" Extension
S-52EHA	10 3/8" Enclosed Head Ratchet	S-140A	Universal Joint
S-110P	5" Extension		

Shallow 6-Point Sockets

Product Code	Size (MM)	Product Code	Size (MM)
STM-1210	10	STM-1219	19
STM-1211	11	STM-1220	20
STM-1212	12	STM-1221	21
STM-1213	13	STM-1222	22
STM-1214	14	STM-1223	23
STM-1215	15	STM-1224	24
STM-1216	16	STM-1225	25
STM-1217	17	STM-1226	26
STM-1218	18		

Features

- Keep-Safe-Foam system keeps tools organized and helps prevent loss.
- All tools are professional quality, made of high-grade chrome vanadium steel.
- Sockets feature SUPERTORQUE® lobular openings for greater turning power without deforming the fastener.
- Metal tool box made for years of rugged use.



MSS-22FTB

1/2" DRIVE

SOCKETS AND
DRIVE TOOLS



20 PIECE 1/2" DRIVE SOCKET AND DRIVE TOOL SET



12 Point Metric, Packed in Exclusive Keep-Safe-Foam-System with Metal Box

Product Code	Description
MSS-20FTB	20 Piece Tool Set with TB-104 Metal Tool Box and Foam

Contents Include:

Drive Tools:

Product Code	Description
S-41AA	15 1/2" Flex Handle
S-52EHA	10 3/8" Enclosed Head Ratchet
S-110P	5" Extension

Shallow 12-Point Sockets

Product Code	Size (mm)	Product Code	Size (mm)
STM-1210	10	STM-1222	22
STM-1213	13	STM-1223	23
STM-1214	14	STM-1224	24
STM-1215	15	STM-1226	26
STM-1217	17	STM-1227	27
STM-1218	18	STM-1230	30
STM-1219	19	STM-1232	32
STM-1220	20	STM-1236	36
STM-1221	21		



Features

- All tools are professional quality, made of high grade special alloy steel.
- Sockets feature SUPERTORQUE lobular openings for greater turning power without deforming the fastener.
- Metal tool box made for years of rugged use.



MSS-20FTB



23 PIECE 1/2" DRIVE SOCKET AND DRIVE TOOL SET



12 Point Metric, Packed in Exclusive Keep-Safe-Foam-System with Metal Box

Product Code	Description
32960	23 Piece Tool Set with TB-104 Metal Tool Box and Foam

Contents Include:

Drive Tools:

Product Code	Description
32001	1/2" Drive Ratchet
32005	15" Flex Handle
32003	6" Extension
32004	10" Extension

Shallow 12-Point Sockets

Product Code	Size (mm)	Product Code	Size (mm)
32609	9	32619	19
32610	10	32620	20
32611	11	32621	21
32612	12	32622	22
32613	13	32623	23
32614	14	32624	24
32615	15	32627	27
32616	16	32630	30
32617	17	32632	32
32618	18		

Features

- Designed for quick engagement on both 6 and 12 fasteners.
- Metal tool box made for years of rugged use.



32960

1/2" DRIVE

SOCKETS AND
DRIVE TOOLS

330





50614A

Features

- All tools are professional quality, made of high-grade chrome vanadium steel.
- Sockets feature SUPERTORQUE® lobular openings for greater turning power without deforming the fastener.
- Packed in rugged high-density polyethylene (HDPE) cases that are strong and durable yet light in weight.
- Case is shock proof at both high and low temperatures, equipped with heavy-duty metal latches and hinges.
- Two-component handles are easy to grip and comfortable to carry.

146 PIECE 1/4", 3/8", 1/2" DRIVE SOCKET SET

6 & 12 Point Rugged-Case-System Tool Set, SAE and Metric

Product Code	Description
50614A	146 Piece 1/4", 3/8", 1/2" Drive Socket Set

Contents Include:

1/4" Drive Tools:		1/4" Drive Hex Bit Sockets, MM		3/8" Drive Shallow 6 Point Sockets, MM	
Product Code	Description	Product Code	Size (MM)	Product Code	Size (MM)
30001	Ratchet	35070	3	31506	6
30003	3" Extension	35071	4	31507	7
30006A	Handle	35072	5	31508	8
30007	Universal Joint	35073	6	31509	9
		35074	7	31510	10
		35075	8	31511	11
				31512	12
				31513	13
				31514	14
				31515	15
				31516	16
				31517	17
				31518	18
				31519	19
1/4" Drive Deep 6 Point Sockets, MM		1/4" Drive Screwdriver Bit Sockets		3/8" Drive Shallow 6 Point Sockets, SAE	
Product Code	Size (MM)	Product Code	Description	Product Code	Size (Inches)
30704	4	35040	5/32" Slotted Tip	31108	1/4
30705	5	35041	7/32" Slotted Tip	31110	5/16
30706	6	35042	9/32" Slotted Tip	31112	3/8
30707	7	35050	#0 Phillips Tip	31114	7/16
30708	8	35051	#1 Phillips Tip	31116	1/2
30709	9	35052	#2 Phillips Tip	31118	9/16
30710	10			31120	5/8
30711	11			31122	11/16
30712	12			31124	3/4
30713	13			31126	13/16
				31128	7/8
				31128	15/16
				31130	1
				31132	
1/4" Drive Deep 6 Point Sockets, SAE		1/4" Drive Torx Bit Sockets		3/8" Drive Spark Plug Socket	
Product Code	Size (Inches)	Product Code	Size	Product Code	Size (Inches)
30306	5/16	35080	T10	31301	5/8
30307	7/32	35081	T15	31303	13/16
30308	1/4	35082	T20		
30309	9/32	35083	T25		
30310	5/16	35084	T27		
30311	11/32	35085	T30		
30312	3/8				
30314	7/16				
30316	1/2				

138 PIECE 1/4", 3/8", 1/2" DRIVE SOCKET SET

6 Point Rugged-Case-System Tool Set, SAE and Metric

Product Code	Description
50612A	138 Piece 1/4", 3/8", 1/2" Drive Socket Set

Contents Include:

1/4" Drive Tools:		3/8" Drive Tools		1/2" Drive Tools	
Product Code	Description	Product Code	Description	Product Code	Description
30001	Ratchet	31001	Ratchet	32001	Ratchet
30002	1-1/2" Extension	31002	3" Extension	32003	6" Extension
30003	3" Extension	31003	6" Extension	32004	10" Extension
30006A	Spinner Handle	31006	Universal Joint	32006	Universal Joint
30007	Universal Joint	31008	Adaptor	32008	Adaptor
30013	Hex Bit Holder	31013	Hex Bit Holder		
24880	13 Piece Insert Bit Set				
1/4" Drive Deep 6 Point Sockets, MM		3/8" Drive Deep 12 Point Sockets, MM		1/2" Drive Shallow 12 Point Sockets, MM	
Product Code	Size (MM)	Product Code	Size (MM)	Product Code	Size (MM)
30704	4	31810	10	32610	10
30705	5	31811	11	32611	11
30706	6	31812	12	32612	12
30707	7	31813	13	32613	13
30708	8	31814	14	32614	14
30709	9	31815	15	32615	15
30710	10	31816	16	32616	16
30711	11	31817	17	32617	17
30712	12	31818	18	32618	18
30713	13	31819	19	32619	19
				32621	21
				32622	22
				32624	24
				32627	27
				32630	30
				32632	32
1/4" Drive Deep 6 Point Sockets, SAE		3/8" Drive Deep 12 Point Sockets, SAE		1/2" Drive Shallow 12 Point Sockets, SAE	
Product Code	Size (Inches)	Product Code	Size (Inches)	Product Code	Size (Inches)
30305	5/32	31412	3/8	32212	3/8
30306	3/16	31414	7/16	32214	7/16
30307	1/2	31416	1/2	32216	1/2
30308	5/8	31418	9/16	32218	9/16
30309	11/32	31420	5/8	32220	5/8
30310	3/4	31422	11/16	32222	11/16
30311	13/32	31424	3/4	32224	3/4
30312	7/8	31426	13/16	32226	13/16
30314	15/16	31428	7/8	32228	7/8
30316	1			32230	15/16
				32232	1
				32234	1 1/16
				32236	1 1/8
				32238	1 3/8
				32240	1 1/4
1/4" Drive Shallow 6 Point Sockets, MM		3/8" Drive Shallow 6 Point Sockets, MM			
Product Code	Size (MM)	Product Code	Size (MM)		
30504	4	31510	10		
30505	5	31511	11		
30509	5.5	31512	12		
30506	6	31513	13		
30507	7	31514	14		
30508	8	31515	15		
30509	9	31516	16		
30510	10	31517	17		
30511	11	31518	18		
30512	12	31519	19		
30513	13				
1/4" Drive Shallow 6 Point Sockets, SAE		3/8" Drive Shallow 6 Point Sockets, SAE			
Product Code	Size (Inches)	Product Code	Size (Inches)		
30105	5/32	31112	3/8		
30106	3/16	31114	7/16		
30107	1/2	31116	1/2		
30108	5/8	31118	9/16		
30109	11/32	31120	5/8		
30110	3/4	31122	11/16		
30111	13/32	31124	3/4		
30112	7/8				
30114	15/16				
30116	1				



50612A

Features

- All tools are professional quality, made of high-grade chrome vanadium steel.
- Sockets feature SUPERTORQUE® lobular openings for greater turning power without deforming the fastener.
- Packed in rugged high-density polyethylene (HDPE) cases that are strong and durable yet light in weight.
- Case is shock proof at both high and low temperatures, equipped with heavy-duty metal latches and hinges.
- Two-component handles are easy to grip and comfortable to carry.

WILLIAMS®



61 PIECE 1/2" DRIVE SOCKET & TOOL SET

6 Point Rugged-Case-System Tool Set, SAE and Metric

Product Code	Description
50617A	61 Piece Socket, Wrench, and Screwdriver Set

Contents Include:

1/2" Drive Tools

Product Code	Description
32001	Ratchet
32002	3' Extension
32003	6' Extension
32004	10' Extension
32005	15-1/2" Flex Handle
32006	Universal Joint
32008	Adaptor
32009	Adaptor 1/2 F x 3/4 M

1/2" Drive Shallow 6 Point Sockets, SAE

Product Code	Size (Inches)
32112	3/8
32114	7/16
32116	1/2
32118	9/16
32120	5/8
32122	11/16
32124	3/4
32126	13/16
32128	7/8
32130	15/16
32132	1
32134	1 1/16
32136	1 1/8
32138	1 3/16
32140	1 1/4

12 Point Combination Wrenches, SAE

Product Code	Size (Inches)
11108	1/4
11110	5/16
11112	3/8
11114	7/16
11116	1/2
11118	9/16
11120	5/8
11122	11/16
11124	3/4

1/2" Drive Shallow 6 Point Sockets, MM

Product Code	Size (MM)
32510	10
32511	11
32512	12
32513	13
32514	14
32515	15
32516	16
32517	17
32518	18
32519	19
32521	21
32522	22
32524	24
32527	27
32530	30
32532	32

12 Point Combination Wrenches, MM

Product Code	Size (MM)
11506	6
11508	8
11510	10
11512	12
11513	13
11514	14
11515	15
11517	17
11519	19

Comfort Grip Screwdrivers

Product Code	Description
24205A	3/16" x 4" Slotted
24219A	1/4" x 4" Slotted
24249A	# 1 x 3" Phillips
24253A	# 2 x 4" Phillips



50617A

Features

- All tools are professional quality, made of high-grade chrome vanadium steel.
- Sockets feature SUPERTORQUE® lobular openings for greater turning power without deforming the fastener.
- Packed in rugged high-density polyethylene (HDPE) cases that are strong and durable yet light in weight.
- Case is shock proof at both high and low temperatures, equipped with heavy-duty metal latches and hinges.
- Two-component handles are easy to grip and comfortable to carry.



S400

Features

- All tools are professional quality, made of high-grade chrome vanadium steel.
- Packed in rugged high-density polyethylene (HDPE) cases that are strong and durable yet light in weight.
- Case is shock proof at both high and low temperatures, equipped with heavy-duty metal latches and hinges.



40 PIECE 1/2" DRIVE SOCKET & TOOL SET

6 Point Rugged-Case-System Tool Set, Metric

Product Code	Description
S400	40 Piece 1/2" Drive Socket and Wrench Set

Contents Include:

1/2" Drive Tools

Description
Quick Release Ratchet
5' Extension
10' Extension
16
T-Adapter
Flex Handle

1/2" Drive 6 Point Sockets

Sizes (MM)	Sizes (MM)	Sizes (MM)
10	17	24
11	18	25
12	19	26
13	20	27
14	21	28
15	22	30
16	23	32

12 Point Combination Wrenches

Sizes (MM)	Sizes (MM)
7	13
8	14
9	15
10	16
11	17
12	18
	19

1/2" DRIVE TOOL SET

SOCKETS AND
DRIVE TOOLS

WILLIAMS®



23 PIECE 1/2" DRIVE BASIC TOOL SET

12 Point Rugged-Case-System Tool Set, SAE

Product Code	Description
50609	23 Piece Basic Tool Set, SAE

Contents Include:

1/2" Drive Tools:		1/2" Drive Shallow 12-Point Sockets	
Product Code	Description	Product Code	Size (Inches)
32001	9 7/8" Quick-Release Ratchet	32212	3/8
32002	3" Extension	32214	7/16
32003	6" Extension	32216	1/2
32004	10" Extension	32218	9/16
32005	15" Flex Handle Breaker Bar	32220	5/8
32006	Universal Joint	32222	11/16
32008	1/2" F X 3/8" M Adapter	32224	3/4
32009	1/2" F X 3/4" M Adapter	32226	13/16
		32228	7/8
		32230	15/16
		32232	1
		32234	1 1/16
		32236	1 1/8
		32238	1 3/16
		32240	1 1/4

Features

- All tools are professional quality, made of high-grade chrome vanadium steel.
- Sockets feature SUPERTORQUE® lobular openings for greater turning power without deforming the fastener.
- Packed in rugged high-density polyethylene (HDPE) cases that are strong and durable yet light in weight.
- Case is shock proof at both high and low temperatures, equipped with heavy-duty metal latches and hinges.
- Two-component handles are easy to grip and comfortable to carry.



50609

WILLIAMS®



25 PIECE 1/2" DRIVE BASIC TOOL SET

12 Point Rugged-Case-System Tool Set, Metric

Product Code	Description
50619	25 Piece Basic Tool Set, Metric

Contents Include:

1/2" Drive Tools:		1/2" Drive Shallow 12-Point Sockets	
Product Code	Description	Product Code	Size (MM)
32001	9 7/8" Quick-Release Ratchet	32610	10
32002	3" Extension	32611	11
32003	6" Extension	32612	12
32004	10" Extension	32613	13
32005	15" Flex Handle Breaker Bar	32614	14
32006	Universal Joint	32615	15
32008	1/2" F X 3/8" M Adapter	32616	16
32009	1/2" F X 3/4" M Adapter	32617	17
		32618	18
		32619	19
		32620	20
		32621	21
		32622	22
		32624	24
		32627	27
		32630	30
		32632	32

Features

- All tools are professional quality, made of high-grade chrome vanadium steel.
- Sockets feature SUPERTORQUE® lobular openings for greater turning power without deforming the fastener.
- Packed in rugged high-density polyethylene (HDPE) cases that are strong and durable yet light in weight.
- Case is shock proof at both high and low temperatures, equipped with heavy-duty metal latches and hinges.
- Two-component handles are easy to grip and comfortable to carry.



50619

1/2" DRIVE

SOCKETS AND
DRIVE TOOLS

334

WARNING





50668



50667



50669

WILLIAMS®



23 PIECE 1/2" DRIVE SOCKET AND DRIVE TOOL SET

12 Point Compact Case Tool Set, SAE

Product Code	Description
50668	23 Piece 1/2" Drive Socket and Drive Tool Set

Contents Include:

1/2" Drive Tools:		1/2" Drive Deep 12 Point Sockets	
Product Code	Description	Product Code	Size (Inches)
32001	9 7/16" Pear Head Ratchet	32416	1/2
32005	15 1/2" Flex Handle	32418	9/16
32003	6" Extension	32420	5/8
		32422	11/16

1/2" Drive Shallow 12 Point Sockets:		Product Code	Size (Inches)
Product Code	Size (Inches)	Product Code	Size (Inches)
32114	7/16	32224	3/4
32216	1/2	32226	13/16
32218	9/16	32228	7/8
32220	5/8	32230	15/16
32222	11/16	32232	1

Features

- All tools are professional quality, made of high-grade chrome vanadium steel
- Sockets feature SUPERTORQUE® lobular openings for greater turning power without deforming the fastener
- Packed in rugged compact high-density polyethylene (HDPE) cases that are strong and durable yet light in weight

WILLIAMS®



12 PIECE 1/2" DRIVE SOCKET AND DRIVE TOOL SET

12 Point Compact Case Tool Set, SAE

Product Code	Description
50667	12 Piece 1/2" Drive Socket and Drive Tool Set

Contents Include:

1/2" Drive Tools:	
Product Code	Description
32001	9 7/16" Pear Head Ratchet
32003	6" Extension

1/2" Drive Shallow 12 Point Sockets:		Product Code	Size (Inches)
Product Code	Size (Inches)	Product Code	Size (Inches)
32216	1/2	32224	3/4
32218	9/16	32226	13/16
32220	5/8	32228	7/8
32222	11/16	32230	15/16

Features

- All tools are professional quality, made of high-grade chrome vanadium steel
- Sockets feature SUPERTORQUE® lobular openings for greater turning power without deforming the fastener
- Packed in rugged compact high-density polyethylene (HDPE) cases that are strong and durable yet light in weight

WILLIAMS®



12 PIECE 1/2" DRIVE SOCKET AND DRIVE TOOL SET

12 Point Compact Case Tool Set, MM

Product Code	Description
50669	12 Piece 1/2" Drive Socket and Drive Tool Set

Contents Include:

1/2" Drive Tools:	
Product Code	Description
32001	9 7/16" Pear Head Ratchet
32003	6" Extension

1/2" Drive Shallow 12 Point Sockets:		Product Code	Size (MM)
Product Code	Size (MM)	Product Code	Size (MM)
32612	12	32616	16
32613	13	32617	17
32614	14	32618	18
32615	15	32619	19

Features

- All tools are professional quality, made of high-grade chrome vanadium steel
- Sockets feature SUPERTORQUE® lobular openings for greater turning power without deforming the fastener
- Packed in rugged compact high-density polyethylene (HDPE) cases that are strong and durable yet light in weight

1/2" DRIVE

SOCKETS AND
DRIVE TOOLS



1/2" DRIVE ENCLOSED HEAD RATCHETS

**Williams® Sealed Narrow Head Design,
Chrome and Black Industrial Finish**

Product Code	Description	Length (Inches)	Number of Teeth
S-52EHA	Chrome Finish Enclosed Head Ratchet	10 1/4	36
S-52EHLA	Chrome Finish Enclosed Head Ratchet, Long	15	36
SB-52EHLA	Black Industrial Finish Enclosed Head Ratchet, Long	15	36
S-52EHFA	Chrome Finish Flex Head Ratchet	14 1/4	36
SB-52EHA	Black Industrial Finish Enclosed Head Ratchet	10 1/4	36
S-52EHRKA	Repair Kit "EHA" Model Enclosed Head Ratchets		

Fed. Spec: ANSI B107.10M



Features

- Enclosed head is sealed to prevent dust, dirt, and liquids from entering head, preserving internal lubrication.
- Forged one-piece ratchet provide strength and safety for industrial applications.
- Smooth comfort-grip handle permits all-day use without gloves.
- 36 tooth gear with 10 degree of engagement allows engagement in tight working areas.
- Nickel/Chrome plating provides increase protection from rust and corrosion.
- Chrome finish models feature mirror-like exterior that can be easily cleaned after each use.
- Single Pawl ratchet design:
 - Designed for tighter tolerances between pawl and gear which reduces metal fatigue and slippage under load.
 - Does not require as many working parts, reducing possible breakage and parts to repair.
- Easy access reverse lever allows user to change working direction quickly and easily with only one hand.



SB-52EHA



S-52EHLA



SB-52EHLA



S-52EHFA



S-52EHA



1/2" DRIVE ROUND HEAD RATCHETS

Knurled Handle, Chrome and Black Industrial Finish

Product Code	Description	Length (Inches)	Number of Teeth
S-52A	Chrome Finish Round Head Ratchet	11 5/8	72
S-53A	Chrome Finish Round Head Ratchet, Long	15	72
BS-52A	Black Industrial Finish Round Head Ratchet	11 5/8	72
S-52ARK	Repair Kit		

Fed. Spec: ANSI B107.10M



Features

- Double pawl design with 72 teeth action provides a 5° ratcheting angle.
- Shift lever reverses action instantly.
- Knurled handle provides a non-slip grip.
- Chrome finish models provides increased protection from rust and corrosion.



S-53A



BS-52A



S-52A



1/2" DRIVE ROUND HEAD LINEMAN'S RATCHET

Knurled Handle, Chrome Finish

Product Code	Description	Length (Inches)	Number of Teeth
S-52LAB	Round Head Lineman's Ratchet	11 5/8	72
S-52LARK	Repair Kit		

Fed. Spec: ANSI B107.10M



Features

- Same features as other Williams' round head ratchets.
- Extra-large shift lever allows easy reversal even when wearing gloves.



S-52LAB

1/2" DRIVE

SOCKETS AND
DRIVE TOOLS





BS-71CBA



BS-62



BS-63A



BS-63B



TOOLS@HEIGHT
DROP PREVENTION SYSTEM



S-40AA



SB-40AA



S-41AA



S-20A



S-10A



S-15A



S-41AA

WILLIAMS

1/2" DRIVE NARROW HEAD CONSTRUCTION RATCHET

Knurled Handle, Black Industrial Finish

Product Code	Description	Length (Inches)	Number of Teeth
BS-71CBA	Narrow Head Construction Ratchet	15 13/16	36
BS-71ARKA	Repair Kit		

Fed. Spec: ANSI B107.10M



Features

- 36 tooth gear with 10 degree of engagement allows engagement in tight working areas.
- Extra-large shift lever reverses action instantly and easily, even when wearing gloves.
- Tapered spud handle easily lines up bolt holes.

WILLIAMS

1/2" DRIVE SCAFFOLDING RATCHET

Product Code	Description	Product Code	Description
BS-62	Scaffolding Ratchet with out pry bar	BS-63BTIP	Hammer Tip
BS-63A	Scaffolding Ratchet with reversed pry bar	BS-63BBAR	Pry Bar
BS-63B	Scaffolding Ratchet with pry bar		
BS-63BRK	Repair Kit		



Features

- 1/2" Drive with pinned 7/8" 6-point socket, 2-1/4" length
- 36 tooth gear with 10 degree of engagement allows engagement in tight working areas
- Bronze hammer head reduces rebound
- Pry bar handle provide alignment option
- Socket feature SUPERTORQUE lobular opening for greater turning power without deforming the fastener
- Easy access reversing lever allows user to change working direction quickly and easily with only one hand
- Tethering device attached to handle
- Repair kit includes ratchet repair kit and cover plate

WILLIAMS

1/2" DRIVE HANDLES

Knurled Handle, Chrome and Black Industrial Finish

Product Code	Description	Length (Inches)
S-40AA	Chrome Flex Handle	10 13/16
SB-40AA	Black Industrial Finish Flex Handle	10 13/16
S-41AA	Chrome Flex Handle	15 1/2
BS-41AA	Black Industrial Finish Flex Handle	15 1/2
S-20A	Sliding T-Handle	12
S-10A	Speeder Handle	13 5/8
S-15A	Speeder Handle	18 1/16
S-41RK	Flex Handle Repair Kit	

Fed. Spec: ANSI B107.10M



Features

- Chrome plating provides increased protection from rust and corrosion.
- Drive handles provide extra leverage with greater strength than ratchets.
- Speeder handle is ideal for fast turn down of fasteners.

1/2" DRIVE

SOCKETS AND
DRIVE TOOLS



1/2" DRIVE EXTENSIONS AND ACCESSORIES

High-Polished Chrome Finish

Product Code	Description	Length (Inches)
S-102P	Extension	2
S-110P	Extension	5
S-115P	Extension	10
S-121P	Extension	20
S-140A	Universal Joint	2 1/16
S-70	Ratchet Spinner Disk	1 9/16

Fed. Spec: ANSI B107.10M

WSS-3XT 3 Piece Extension Set in Pouch

Contents Include:

Product Code	Size (Inches)
S-102P	2
S-110P	5
S-115P	10

Features

- Chrome plating provides increased protection from rust and corrosion.
- Ball and spring socket retention.
- Spinner disk is ideal for fast turn down of fasteners.



1/2" DRIVE ADAPTORS AND EXTENSION ADAPTORS

High-Polished Chrome and Black Oxide Finish

Product Code	Length (Inches)	Male End (Inches)	Female End (Inches)
Chrome Finish Adapter			
SH-130	1 15/16	3/4	1/2
Black Industrial Finish Adapters			
SH-130B	1 15/16	3/4	1/2
SH-131BF	2 3/16	1/2	3/4
Black Industrial Finish Extension Adapters			
BS-05B	5	3/8	1/2
BS-12B	12	3/8	1/2

Fed. Spec: ANSI B107.10M

Features

- Ball and spring socket retention.
- Extension adapters offer convenience of extension and adapter in one tool.



1/2" DRIVE STUD REMOVER

Satin Chrome Finish

Product Code	Description	Length (Inches)	Capacity (Inches)
S-60E	Stud Remover	2 7/16	1/2 to 3/4

Fed. Spec: ANSI B107.10M

Features

- Knurled wheel grips studs during removal.
- Drive shank extends through both sides of housing for even bearing surface.
- Capacity is 1/2" to 3/4" stud diameter.





WILLIAMS®

1/2" DRIVE RATCHETS AND HANDLES

High-Polished Chrome Finish

Product Code	Description	Length (Inches)	Repair Kit
32001	40 Tooth Quick-Release Ratchet	9 7/8	32001RK
32011	Ultra-Fine 60-Tooth Ratchet	9 7/8	32011RK
32005	Flex Handle	15	
11920	Flex Handle, Comb. 3/8" x 1/2" Drive	10	
32007	Sliding T-Handle	15	

Fed. Spec: ANSI B107.10M

Features

- Ball and spring socket retention.
- Williams 1/2" Drive Ratchets Feature:
- Ultra-fine 60 tooth model offers 6° tooth action in a narrow pear head
- Unique Finger-Fit handles to provide a comfortable, non-slip grip and extra turning power.
- Choice of 38-tooth quick-release or 60-tooth ultra-fine gear.
- Narrow pear-shaped heads for access into confined work areas.
- High-polished chrome finish for easy cleaning.
- Unique combination 3/8" x 1/2" drive flex handle offers convenience of both drive sizes on one handle.

WILLIAMS®

1/2" DRIVE EXTENSIONS AND ACCESSORIES

High-Polished Chrome Finish

Product Code	Description	Length (Inches)
32002	Extension	3
32003	Extension	6
32004	Extension	10
32006	Universal Joint	2 11/16
32008	Adaptor, 1/2" F x 3/8" M	1 7/16
32009	Adaptor, 1/2" F x 3/4" M	1 3/4
32023	Locking Extension	3
32024	Locking Extension	6
32025	Locking Extension	10
32026	Locking Extension	12
32027	Locking Extension	18
32028	Locking Extension	24

Fed. Spec: ANSI B107.10M

Features

- Chrome plating provides increased protection from rust and corrosion.
- Ball and spring socket retention.

WILLIAMS®

6 PIECE 1/2" DRIVE RATCHET AND DRIVE TOOL SET

Furnished in Pouch

Product Code	Description
32920	6 Piece 1/2" Drive Ratchet and Accessory Set

Contents Include:

Product Code	Description	Product Code	Description
32001	9 7/8" Quick-Release Ratchet	32005	15" Flex Handle Breaker Bar
32002	3" Extension	32006	Universal Joint
32004	10" Extension	32007	15" Sliding T-Handle

Features

- All tools are professional quality, made of high-grade chrome vanadium steel.

1/2" DRIVE

SOCKETS AND
DRIVE TOOLS

1/2" DRIVE SHALLOW 12 POINT SOCKETS, SAE

High-Polished Chrome Finish

Product Code	Size (Inches)	OAL (Inches)	A	B	C	D	E	F
			Drive End Diameter (Inches)	Working End Diameter (Inches)	Broach Depth (Inches)	Bolt Clearance Depth (Inches)	Bolt Clearance Diameter (Inches)	Nose Length (Inches)
ST-1212	3/8	1 1/2	29/32	19/32	3/8	7/8	11/32	23/32
ST-1214	7/16	1 1/2	29/32	21/32	3/8	7/8	13/32	23/32
ST-1216	1/2	1 1/2	29/32	3/4	3/8	7/8	15/32	23/32
ST-1218	9/16	1 1/2	29/32	13/16	3/8	7/8	15/32	23/32
ST-1219	19/32	1 1/2	29/32	7/8	3/8	7/8	15/32	23/32
ST-1220	5/8	1 1/2	29/32	29/32	9/16	7/8	15/32	-
ST-1221	21/32	1 1/2	31/32	19/32	19/32	7/8	15/32	-
ST-1222	11/16	1 1/2	31/32	31/32	19/16	27/32	5/8	-
ST-1224	3/4	1 1/2	1 1/32	1 1/32	19/16	27/32	23/32	-
ST-1225	25/32	1 1/2	1 1/16	1 1/16	19/16	27/32	3/4	-
ST-1226	13/16	1 1/2	1 1/8	1 1/8	13/16	27/32	25/32	-
ST-1228	7/8	1 1/2	1 3/16	1 3/16	19/16	27/32	7/8	-
ST-1230	15/16	1 1/2	1 9/32	1 9/32	19/16	27/32	29/32	-
ST-1231	31/32	1 9/16	1 5/16	1 5/16	27/32	7/8	15/16	-
ST-1232	1	1 9/16	1 11/32	1 11/32	27/32	7/8	31/32	-
ST-1234	1 1/16	1 11/16	1 7/16	1 7/16	31/32	1	1 1/16	-
ST-1236	1 1/8	1 3/4	1 1/2	1 1/2	1 1/32	1 1/16	1 1/8	-
ST-1238	1 3/8	1 3/4	1 5/8	1 5/8	1	1 1/32	1 3/8	-
ST-1240	1 1/4	1 3/8	1 11/16	1 11/16	1 1/8	1 1/32	1 1/4	-
ST-1242	1 3/8	1 7/8	1 3/4	1 3/4	1 1/32	1 1/32	1 3/8	-
ST-1244	1 3/8	2 1/16	1 13/16	1 13/16	1	1 1/16	1 11/32	-
ST-1246	1 7/8	2 1/4	1 15/16	1 15/16	1 1/32	1 1/2	1 7/8	-
ST-1248	1 1/2	2 1/4	2	2	1 1/16	1 1/2	1 1/2	-

Fed. Spec: ANSI B107.110

WSS-15RC 15 Piece 1/2" Drive Shallow 12-Point Socket Set on Clip Rail

Contents Include:

Product Code	Size (Inches)	Product Code	Size (Inches)	Product Code	Size (Inches)
ST-1212	3/8	ST-1222	11/16	ST-1232	1
ST-1214	7/16	ST-1224	3/4	ST-1234	1 1/16
ST-1216	1/2	ST-1226	13/16	ST-1236	1 1/8
ST-1218	9/16	ST-1228	7/8	ST-1238	1 3/16
ST-1220	5/8	ST-1230	15/16	ST-1240	1 1/4



WSS-15RC

WSS-23RC 23 Piece 1/2" Drive Shallow 12-Point Socket Set on Clip Rail

Contents Include:

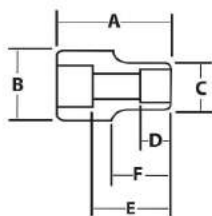
Product Code	Size (Inches)	Product Code	Size (Inches)	Product Code	Size (Inches)	Product Code	Size (Inches)
ST-1212	3/8	ST-1221	21/32	ST-1230	15/16	ST-1240	1 1/4
ST-1214	7/16	ST-1222	11/16	ST-1231	31/32	ST-1242	1 3/16
ST-1216	1/2	ST-1224	3/4	ST-1232	1	ST-1244	1 3/8
ST-1218	9/16	ST-1225	25/32	ST-1234	1 1/16	ST-1246	1 7/16
ST-1219	19/32	ST-1226	13/16	ST-1236	1 1/8	ST-1248	1 1/2
ST-1220	5/8	ST-1228	7/8	ST-1238	1 3/16		

Features

- SUPERTORQUE® lobular openings for greater turning power without deforming the fastener.
- Designed for quick engagement on both 6 and 12 point fasteners.



WSS-23RC



1/2" DRIVE SHALLOW 12 POINT SOCKETS, SAE

High-Polished Chrome Finish

Product Code	Size (Inches)	OAL (Inches)	Drive End Diameter (Inches)	Working End Diameter (Inches)	Broach Depth (Inches)	Bolt Clearance Depth (Inches)	Bolt Clearance Diameter (Inches)	Nose Length (Inches)
32212	3/8	1 1/2	7/8	5/8	1/2	25/32	5/16	23/32
32214	7/16	1 1/2	7/8	11/16	1/2	27/32	13/32	11/16
32216	1/2	1 1/2	7/8	3/4	17/32	27/32	15/32	23/32
32218	9/16	1 1/2	7/8	13/16	17/32	27/32	17/32	11/16
32220	5/8	1 1/2	29/32	29/32	17/32	27/32	9/16	-
32222	11/16	1 1/2	31/32	31/32	9/16	27/32	27/32	-
32224	3/4	1 1/2	1	1	3/4	29/32	23/32	-
32226	13/16	1 1/2	1 1/8	1 1/8	25/32	31/32	25/32	-
32228	7/8	1 5/8	1 9/16	1 3/16	7/8	1 1/32	7/8	-
32230	15/16	1 5/8	1 1/4	1 1/4	7/8	1 5/32	29/32	-
32232	1	1 5/8	1 5/8	1 5/8	7/8	1 3/16	31/32	-
32234	1 1/16	1 3/4	1 7/16	1 7/16	31/32	1 9/32	1 1/16	-
32236	1 1/8	1 3/4	1 1/2	1 1/2	31/32	1 5/16	1 9/32	-
32238	1 3/16	1 3/4	1 9/16	1 9/16	31/32	1 5/16	1 1/4	-
32240	1 1/4	1 3/4	1 11/16	1 21/32	31/32	1 5/16	1 1/4	-
32242	1 5/16	1 47/64	1 1/2	1 47/64	59/64	59/64	1 3/16	-
32244	1 3/8	1 47/64	1 37/64	1 53/64	59/64	59/64	1 17/64	-
32246	1 7/16	1 31/32	1 27/32	1 57/64	1 1/16	1 1/16	1 1/32	-
32248	1 1/2	1 31/32	1 11/16	1 31/32	1 1/8	1 1/2	1 1/8	-

Fed. Spec: ANSI B107.110

32922 9 Piece 1/2" Drive Shallow 12-Point Socket Set on Clip Rail

Contents Include:

Product Code	Size (Inches)	Product Code	Size (Inches)	Product Code	Size (Inches)
32216	1/2	32222	11/16	32228	7/8
32218	9/16	32224	3/4	32230	15/16
32220	5/8	32226	13/16	32232	1



32922

32924 16 piece 1/2" Drive Shallow 12 Point Socket Set on Clip Rails

Contents Include:

Product Code	Size (Inches)	Product Code	Size (Inches)	Product Code	Size (Inches)
32212	3/8	32220	5/8	32228	7/8
32214	7/16	32222	11/16	32230	15/16
32216	1/2	32224	3/4	32232	1
32218	9/16	32226	13/16	32234	1 1/16
				32248	1 1/2



32924

32925 19 piece 1/2" Drive Shallow 12 Point Socket Set on Clip Rails

Contents Include:

Product Code	Size (Inches)	Product Code	Size (Inches)	Product Code	Size (Inches)	Product Code	Size (Inches)
32212	3/8	32222	11/16	32232	1	32242	1 5/16
32214	7/16	32224	3/4	32234	1 1/16	32244	1 3/8
32216	1/2	32226	13/16	32236	1 1/8	32246	1 7/16
32218	9/16	32228	7/8	32238	1 3/16	32248	1 1/2
32220	5/8	32230	15/16	32240	1 1/4		



32925

Features

- SUPERTORQUE® lobular openings for greater turning power without deforming the fastener.
- Designed for quick engagement on both 6 and 12 point fasteners.

1/2" DRIVE

SOCKETS AND
DRIVE TOOLS