

WILLIAMS®

12 M

## 46 PIECE 3/4" DRIVE SOCKET AND DRIVE TOOL SET

12 Point MM, with Metal Box

| Product Code | Description                                 |
|--------------|---|
| 33910        | 46 Piece Tool Set with TB-12 Metal Tool Box |
| 33911        | 46 Piece Tool Set Only                      |

### Contents Include:

| Drive Tools: |                      | 3/4" Drive Shallow 12 Point Sockets |           |
|--------------|----------------------|-------------------------------------|-----------|
| Product Code | Description          | Product Code                        | Size (MM) |
| 33001        | Ratchet              | 33619                               | 19        |
| 33005        | Flex handle          | 33620                               | 20        |
| 33002        | 4" Extension         | 33621                               | 21        |
| 33003        | 8" Extension         | 33622                               | 22        |
| 33004        | 16" Extension        | 33623                               | 23        |
| 33006        | 18" Sliding T-handle | 33624                               | 24        |
| 33007        | Universal Joint      | 33625                               | 25        |
|              |                      | 33626                               | 26        |
|              |                      | 33627                               | 27        |
|              |                      | 33628                               | 28        |
|              |                      | 33629                               | 29        |
|              |                      | 33630                               | 30        |
|              |                      | 33632                               | 32        |
|              |                      | 33635                               | 35        |
|              |                      | 33636                               | 36        |
|              |                      | 33638                               | 38        |
|              |                      | 33641                               | 41        |
|              |                      | 33642                               | 42        |
|              |                      | 33646                               | 46        |
|              |                      | 33650                               | 50        |
|              |                      | 33654                               | 54        |
|              |                      | 33655                               | 55        |
|              |                      | 33658                               | 58        |
|              |                      | 33660                               | 60        |

### Features

- All tools are professional quality, made of high-grade chrome vanadium steel.
- Sockets feature SUPERTORQUE® lobular openings for greater turning power without deforming the fastener.
- Metal tool box made for years of rugged use.



33910

3/4" DRIVE

SOCKETS AND  
DRIVE TOOLS

379

### 30 PIECE 3/4" DRIVE SOCKET AND DRIVE TOOL SET

### 12 Point, MM with Metal Box

| Product Code | Description                                    |
|--------------|--|
| 33912        | 30 Piece Tool Set with TB-6124A Metal Tool Box |
| 33913        | 30 Piece Tool Set Only                         |

### Contents Include:

| <b>3/4" Drive Tools:</b>                   |                      | <b>3/4" Drive Shallow 12 Point Sockets</b> |                  |
|--|----------------------|--|------------------|
| <b>Product Code</b>                        | <b>Description</b>   | <b>Product Code</b>                        | <b>Size (MM)</b> |
| 33001                                      | Ratchet              | 33627                                      | 27               |
| 33005                                      | Flex handle          | 33628                                      | 28               |
| 33002                                      | 4" Extension         | 33629                                      | 29               |
| 33003                                      | 8" Extension         | 33630                                      | 30               |
| 33004                                      | 16" Extension        | 33632                                      | 32               |
| 33006                                      | 18" Sliding T-handle | 33635                                      | 35               |
| 33007                                      | Universal Joint      | 33636                                      | 36               |
|  |                      | 33638                                      | 38               |
| <b>3/4" Drive Shallow 12 Point Sockets</b> |                      | 33641                                      | 41               |
| <b>Product Code</b>                        | <b>Size (MM)</b>     | 33642                                      | 42               |
| 33619                                      | 19                   | 33646                                      | 46               |
| 33620                                      | 20                   | 33650                                      | 50               |
| 33621                                      | 21                   | 33654                                      | 54               |
| 33622                                      | 22                   | 33655                                      | 55               |
| 33623                                      | 23                   | 33658                                      | 58               |
| 33624                                      | 24                   | 33660                                      | 60               |
| 33625                                      | 25                   |  |                  |
| 33626                                      | 26                   |  |                  |

## Features

- All tools are professional quality, made of high-grade chrome vanadium steel.
- Sockets feature SUPERTORQUE® lobular openings for greater turning power without deforming the fastener.
- Metal tool box made for years of rugged use.



33912



WSH-29TB

WILLIAMS®



## 29 PIECE 3/4" DRIVE SOCKET AND DRIVE TOOL SET

### 12 Point SAE, with Metal Box

| Product Code | Description                                    |
|--------------|--|
| WSH-29TB     | 29 Piece Tool Set with TB-6124A Metal Tool Box |
| WSH-29       | 29 Piece Tool Set Only                         |

#### Contents Include:

| Drive Tools: |                      | Shallow 12-Point Sockets |               |
|--------------|----------------------|--------------------------|---------------|
| Product Code | Description          | Product Code             | Size (Inches) |
| H-20A        | 19" Sliding T-Handle | H-1242                   | 1 3/16        |
| H-41AA       | 22" Flex Handle      | H-1244                   | 1 3/8         |
| H-51B        | 20" Ratchet          | H-1246                   | 1 7/16        |
| H-104        | 3" Extension         | H-1248                   | 1 1/2         |
| H-110        | 8" Extension         | H-1250                   | 1 5/8         |
| H-115        | 16" Extension        | H-1252                   | 1 3/4         |
| H-140A       | Universal Joint      | H-1254                   | 1 13/16       |
|              |                      | H-1256                   | 1 3/4         |
|              |                      | H-1258                   | 1 15/16       |
|              |                      | H-1260                   | 1 7/8         |
|              |                      | H-1264                   | 2             |
|              |                      | H-1268                   | 2 1/8         |
|              |                      | H-1270                   | 2 3/16        |
|              |                      | H-1272                   | 2 1/4         |
|              |                      | H-1276                   | 2 3/8         |

#### Shallow 12-Point Sockets

| Product Code | Size (Inches) |
|--------------|---------------|
| H-1228       | 7/8           |
| H-1230       | 15/16         |
| H-1232       | 1             |
| H-1234       | 1 1/16        |
| H-1236       | 1 1/8         |
| H-1238       | 1 3/16        |
| H-1240       | 1 1/4         |



#### Features

- All tools are professional quality, made of high-grade chrome vanadium steel.
- Sockets feature SUPERTORQUE® lobular openings for greater turning power without deforming the fastener.
- Metal tool box made for years of rugged use.



WSH-22TB

WILLIAMS®



## 22 PIECE 3/4" DRIVE SOCKET AND DRIVE TOOL SET

### 12 Point SAE, with Metal Box

| Product Code | Description                                 |
|--------------|---|
| WSH-22TB     | 22 Piece Tool Set with TB-49 Metal Tool Box |
| WSH-22       | 22 Piece Tool Set Only                      |

#### Contents Include:

| Drive Tools: |                 | Shallow 12-Point Sockets |               |
|--------------|-----------------|--------------------------|---------------|
| Product Code | Description     | Product Code             | Size (Inches) |
| H-41AA       | 22" Flex Handle | H-1236                   | 1 1/8         |
| H-51B        | 20" Ratchet     | H-1240                   | 1 1/4         |
| H-104        | 3" Extension    | H-1242                   | 1 5/16        |
| H-110        | 8" Extension    | H-1244                   | 1 3/8         |
| H-115        | 16" Extension   | H-1246                   | 1 7/16        |
| H-140A       | Universal Joint | H-1248                   | 1 1/2         |
|              |                 | H-1252                   | 1 3/4         |
|              |                 | H-1254                   | 1 13/16       |
|              |                 | H-1256                   | 1 3/4         |
|              |                 | H-1258                   | 1 15/16       |
|              |                 | H-1260                   | 1 7/8         |
|              |                 | H-1264                   | 2             |

#### Shallow 12-Point Sockets

| Product Code | Size (Inches) |
|--------------|---------------|
| H-1228       | 7/8           |
| H-1230       | 15/16         |
| H-1232       | 1             |
| H-1234       | 1 1/16        |



#### Features

- All tools are professional quality, made of high-grade chrome vanadium steel.
- Sockets feature SUPERTORQUE® lobular openings for greater turning power without deforming the fastener.
- Metal tool box made for years of rugged use.

3/4" DRIVE

SOCKETS AND  
DRIVE TOOLS

WILLIAMS®



## 23 PIECE 3/4" DRIVE SOCKET AND DRIVE TOOL SET

### 12 Point, MM with Metal Box

| Product Code | Description                                 |
|--------------|---|
| 33914        | 23 Piece Tool Set with TB-49 Metal Tool Box |
| 33915        | 23 Piece Tool Set Only                      |

#### Contents Include:

##### 3/4" Drive Tools:

| Product Code | Description   |
|--------------|---------------|
| 33001        | Ratchet       |
| 33005        | Flex handle   |
| 33003        | 8" Extension  |
| 33004        | 16" Extension |

##### 3/4" Drive Shallow 12 Point Sockets

| Product Code | Size (MM) |
|--------------|-----------|
| 33619        | 19        |
| 33620        | 20        |
| 33621        | 21        |
| 33622        | 22        |
| 33623        | 23        |
| 33624        | 24        |
| 33625        | 25        |
| 33626        | 26        |
| 33627        | 27        |
| 33628        | 28        |
| 33629        | 29        |
| 33630        | 30        |
| 33632        | 32        |
| 33635        | 35        |
| 33636        | 36        |
| 33638        | 38        |
| 33641        | 41        |
| 33642        | 42        |
| 33646        | 46        |

#### Features

- All tools are professional quality, made of high-grade chrome vanadium steel.
- Sockets feature SUPERTORQUE® lobular openings for greater turning power without deforming the fastener.
- Metal tool box made for years of rugged use.



33914

Image shown is not actual set, for reference only.

3/4" DRIVE

SOCKETS AND  
DRIVE TOOLS

382







WSH-13TB

**WILLIAMS**



## 13 PIECE 3/4" DRIVE SOCKET AND DRIVE TOOL SET

### 12 Point SAE, with Metal Box

| Product Code | Description                                 |
|--------------|---|
| WSH-13TB     | 13 Piece Tool Set with TB-49 Metal Tool Box |
| WSH-13       | 13 Piece Tool Set Only                      |

#### Contents Include:

| Drive Tools: |              | Shallow 12-Point Sockets |               |
|--------------|--------------|--------------------------|---------------|
| Product Code | Description  | Product Code             | Size (Inches) |
| H-51B        | 20" Ratchet  | H-1234                   | 1 1/16        |
| H-110        | 8" Extension | H-1236                   | 1 1/8         |
|              |              | H-1240                   | 1 1/4         |
|              |              | H-1242                   | 1 5/16        |
|              |              | H-1244                   | 1 3/8         |
|              |              | H-1246                   | 1 7/16        |
|              |              | H-1248                   | 1 1/2         |
|              |              | H-1252                   | 1 5/8         |

#### Features

- All tools are professional quality, made of high-grade chrome vanadium steel.
- Sockets feature SUPERTORQUE® lobular openings for greater turning power without deforming the fastener.
- Metal tool box made for years of rugged use.



MSH-20TB

**WILLIAMS**



## 20 PIECE 3/4" DRIVE SOCKET AND DRIVE TOOL SET

### 12 Point Metric, with Metal Box

| Product Code | Description                                 |
|--------------|---|
| MSH-20TB     | 20 Piece Tool Set with TB-49 Metal Tool Box |
| MSH-20       | 20 Piece Tool Set Only                      |

#### Contents Include:

| Drive Tools: |                 | Shallow 12-Point Sockets |           |
|--------------|-----------------|--------------------------|-----------|
| Product Code | Description     | Product Code             | Size (MM) |
| H-41AA       | 22" Flex Handle | HM-1230                  | 30        |
| H-51B        | 20" Ratchet     | HM-1232                  | 32        |
| H-110        | 8" Extension    | HM-1235                  | 35        |
| H-115        | 16" Extension   | HM-1236                  | 36        |
| H-140A       | Universal Joint | HM-1238                  | 38        |
|              |                 | HM-1241                  | 41        |
|              |                 | HM-1246                  | 46        |
|              |                 | HM-1250                  | 50        |
|              |                 | HM-1254                  | 54        |
|              |                 | HM-1255                  | 55        |
|              |                 | HM-1260                  | 60        |

#### Features

- All tools are professional quality, made of high-grade chrome vanadium steel.
- Sockets feature SUPERTORQUE® lobular openings for greater turning power without deforming the fastener.
- Metal tool box made for years of rugged use.



3/4" DRIVE

SOCKETS AND  
DRIVE TOOLS



## 20 PIECE 3/4" DRIVE SOCKET-LOK® TOOL SET

### 12 Point SAE, with Metal Box

| Product Code | Description                                 |
|--------------|---|
| 33901        | 20 Piece Tool Set with 50081 Metal Tool Box |
| 50081        | Metal Box                                   |

#### Contents Include:

| 3/4" Drive Tools:                   |                         | 3/4" Drive Shallow 12-Point Sockets |               |
|-------------------------------------|-------------------------|-------------------------------------|---------------|
| Product Code                        | Description             | Product Code                        | Size (Inches) |
| 33001                               | 20" Socket-Lok® Ratchet | 33238                               | 1 3/16        |
| 33006                               | 18" Sliding T-Handle    | 33240                               | 1 1/4         |
| 33002                               | 4" Extension            | 33242                               | 1 5/16        |
| 33003                               | 8" Extension            | 33244                               | 1 3/8         |
|                                     |                         | 33246                               | 1 7/16        |
|                                     |                         | 33248                               | 1 1/2         |
|                                     |                         | 33252                               | 1 5/8         |
|                                     |                         | 33256                               | 1 3/4         |
|                                     |                         | 33258                               | 1 13/16       |
|                                     |                         | 33260                               | 1 7/8         |
|                                     |                         | 33264                               | 2             |
| 3/4" Drive Shallow 12-Point Sockets |                         |                                     |               |
| Product Code                        | Size (Inches)           |                                     |               |
| 33228                               | 7/16                    |                                     |               |
| 33230                               | 19/16                   |                                     |               |
| 33232                               | 1                       |                                     |               |
| 33234                               | 1 1/16                  |                                     |               |
| 33236                               | 1 1/8                   |                                     |               |

#### Features

- Unique Socket-Lok® Safety Retention System features a spring-loaded locking button for maximum socket retention and quick disassembly when used with our Williams® locking-button square drive tools and sockets. May also be used with all standard 3/4" drive tools.
- Chamfered ends provide easy engagement of the drive tool and fastener.
- All tools are professional quality, made of high-grade chrome vanadium steel.
- Sockets feature SUPERTORQUE® lobular openings for greater turning power without deforming the fastener.
- Metal tool box made for years of rugged use.



**Socket-Lok® button positively locks the socket and drive tool together, providing positive retention and quick disassembly.**



3/4" DRIVE

SOCKETS AND  
DRIVE TOOLS

384







33903



33905



## 20 PIECE 3/4" SOCKET SET

### 12 Point Rugged-Case-System Tool Set, SAE

| Product Code | Description              |
|--------------|--------------------------|
| 33903        | 20 Piece 3/4" Socket Set |

#### Contents Include:

| 3/4" Drive Tools: |                             | 3/4" Drive Shallow 12 Point Sockets |               |
|-------------------|-----------------------------|-------------------------------------|---------------|
| Product Code      | Description                 | Product Code                        | Size (Inches) |
| 33003             | 8" Extension                | 33236                               | 1 1/8         |
| 33004             | 16" Extension               | 33240                               | 1 1/4         |
| 33012             | 32 Tooth Ratchet Head       | 33242                               | 1 5/8         |
| 33013             | Universal Extendable Handle | 33244                               | 1 3/8         |
| 33014             | Sliding T-Handle            | 33246                               | 1 7/8         |
|                   |                             | 33248                               | 1 1/2         |
|                   |                             | 33252                               | 1 5/8         |
|                   |                             | 33256                               | 1 3/4         |
|                   |                             | 33258                               | 1 13/16       |
|                   |                             | 33260                               | 1 7/8         |
|                   |                             | 33264                               | 2             |

#### Features

- Extended Handle extends from 23-1/2" to 36"
- Sockets feature SUPERTORQUE® lobular openings for greater turning power without deforming the fastener
- Packed in rugged high-density polyethylene (HDPE) cases that are strong and durable yet light in weight
- Case is shock proof at both high and low temperatures, equipped with heavy-duty metal latches and hinges
- Two-component handles are easy to grip and comfortable to carry



## 25 PIECE 3/4" SOCKET SET

### 12 Point with Metal Box, SAE

| Product Code | Description              |
|--------------|--------------------------|
| 33905        | 25 Piece 3/4" Socket Set |

#### Contents Include:

| 3/4" Drive Tools: |                 | 3/4" Drive Shallow 12 Point Sockets |               |
|-------------------|-----------------|-------------------------------------|---------------|
| Product Code      | Description     | Product Code                        | Size (Inches) |
| 33001             | 2 Piece Ratchet | 33240                               | 1 1/4         |
| 33002             | 4" Extension    | 33242                               | 1 5/8         |
| 33003             | 8" Extension    | 33244                               | 1 3/8         |
| 33004             | 16" Extension   | 33246                               | 1 7/8         |
|                   |                 | 33248                               | 1 1/2         |
|                   |                 | 33250                               | 1 9/16        |
|                   |                 | 33252                               | 1 5/8         |
|                   |                 | 33256                               | 1 3/4         |
|                   |                 | 33258                               | 1 13/16       |
|                   |                 | 33260                               | 1 7/8         |
|                   |                 | 33264                               | 2             |
|                   |                 | 33268                               | 2 1/8         |
|                   |                 | 33272                               | 2 1/4         |

#### Features

- All tools are professional quality, made of high-grade chrome vanadium steel
- Sockets feature SUPERTORQUE® lobular openings for greater turning power without deforming the fastener
- Packed in rugged high-density polyethylene (HDPE) cases that are strong and durable yet light in weight
- Case is shock proof at both high and low temperatures, equipped with heavy-duty metal latches and hinges
- Two-component handles are easy to grip and comfortable to carry



### 3/4" DRIVE INTEGRATED HANDLE RATCHETS

#### Chrome and Black Industrial Finish

| Product Code | Description                     | Length (Inches) | Number of Teeth |
|--------------|---------------------------------|-----------------|-----------------|
| H-51B        | Chrome Ratchet                  | 20 1/8          | 32              |
| HB-51B       | Black Finish Ratchet            | 20 1/8          | 32              |
| H-52EHRK     | Repair Kit for H-51B and HB-51B |                 |                 |

Fed. Spec: ANSI B107.10M



#### Features

- Forged one-piece ratchet provide strength and safety for industrial applications.
- Smooth comfort-grip handle permits all-day use without gloves.
- 32 tooth gear with 11 degree of engagement allows engagement in tight working areas.
- Single Pawl ratchet design:
  - 1) Designed for tighter tolerances between pawl and gear which reduces metal fatigue and slippage under load.
  - 2) Does not require as many working parts, reducing possible breakage and parts to repair.
- Easy access reverse lever allows user to change working direction quickly and easily with only one hand.
- Ball and Spring socket retention.



H-51B



HB-51B



### 3/4" DRIVE REMOVABLE-HANDLE RATCHETS

#### Knurled Handle, Chrome Finish

| Product Code | Description | Length (Inches) | Number of Teeth |
|--------------|-------------|-----------------|-----------------|
|--------------|-------------|-----------------|-----------------|

#### Complete Ratchet

|         |                             |         |    |
|---------|-----------------------------|---------|----|
| H-51AB1 | Ratchet with 19 1/4" Handle | 24 1/16 | 32 |
|---------|-----------------------------|---------|----|

#### Components

|           |                                   |        |    |
|-----------|-----------------------------------|--------|----|
| H-51AB    | Ratchet Head Only                 | 6      | 32 |
| H-A1      | Handle Only                       | 19 1/4 |    |
| H-52EHRKA | Repair Kit for H-51AB1 and H-51AB |        |    |

Note: Head Bore and Handle End Diameter: 13/16"

Fed. Spec: ANSI B107.10M



#### Features

- 32 teeth action provides an 11° ratcheting angle.
- Shift lever reverses action instantly.
- Ball and spring provide firm socket retention.
- Removable handle makes the tool more versatile, and storage easier.
- Knurled handle provides a non-slip grip.
- Chrome finish models provides increased protection from rust and corrosion.
- Our most rugged, high torque capacity ratchet.



H-51AB1



H-51AB



H-A1



H-41AA



H-20A



HB-20A



### 3/4" DRIVE HANDLES

#### Chrome and Black Industrial Finish

| Product Code | Description                           | Length (Inches) | Finish           |
|--------------|---------------------------------------|-----------------|------------------|
| H-41AA       | Flex Handle Breaker Bar, Knurled Grip | 22 1/8          | Chrome           |
| H-20A        | Sliding T-Handle                      | 19 1/4          | Chrome           |
| HB-20A       | Sliding T-Handle                      | 19 1/4          | Black Industrial |

Fed. Spec: ANSI B107.10M



#### Features

- Chrome plating provides increased protection from rust and corrosion.
- Drive handles provide extra leverage with greater strength than ratchets.
- Square drive slides on T-Handles for versatility.
- Flex handle flex drive swivels 110° in either direction.







**WILLIAMS**

## 3/4" DRIVE EXTENSIONS

### Chrome and Black Industrial Finish

Product Code Length (Inches)

#### Chrome Finish

|       |    |
|-------|----|
| H-104 | 3  |
| H-110 | 8  |
| H-115 | 16 |

#### Black Industrial Finish

|        |    |
|--------|----|
| H-104B | 3  |
| H-110B | 8  |
| H-115B | 16 |

Fed. Spec: ANSI B107.10M



### Features

- Chrome plating provides increased protection from rust and corrosion.
- Ball and spring socket retention.

**WILLIAMS**

## 3/4" DRIVE ADAPTERS

### Chrome and Black Industrial Finish

Product Code Length (Inches) Male End (Inches) Female End (Inches) Female End Detent

#### Chrome Finish

|         |        |     |     |                     |
|---------|--------|-----|-----|---------------------|
| HNX-130 | 3      | 1   | 3/4 | Detent on Each Wall |
| HNX-131 | 3 1/16 | 3/4 | 1   | Drilled Hole        |

#### Black Industrial Finish

|          |        |     |     |                     |
|----------|--------|-----|-----|---------------------|
| HNX-130B | 3      | 1   | 3/4 | Detent on Each Wall |
| HNX-131B | 3 1/16 | 3/4 | 1   | Drilled Hole        |

Fed. Spec: ANSI B107.10M



### Features

- Chrome plating provides increased protection from rust and corrosion.
- Ball and spring socket retention.

**WILLIAMS**

## 3/4" DRIVE UNIVERSAL JOINTS

### Chrome and Black Industrial Finish

Product Code Description Length (Inches)

#### Chrome Finish

|        |                 |        |
|--------|-----------------|--------|
| H-140A | Universal Joint | 4 1/16 |
|--------|-----------------|--------|

#### Black Industrial Finish

|         |                 |        |
|---------|-----------------|--------|
| HB-140A | Universal Joint | 4 1/16 |
|---------|-----------------|--------|

### Features

- Chrome plating provides increased protection from rust and corrosion.
- Ball and spring socket retention.





### 3/4" DRIVE EXTENDABLE RATCHET AND T-HEAD

#### High-Polished Chrome Finish

| Product Code | Description                 | Length (Inches) | Repair Kit |
|--------------|-----------------------------|-----------------|------------|
| 33012        | 32 Tooth Ratchet Head       | 6               | 33001RK    |
| 33013        | Universal Extendable Handle | 23 1/2" to 36"  |            |
| 33014        | Sliding T-Head              |                 |            |

Fed. Spec: ANSI B107.10M

#### Features

- Williams 3/4" Drive Ratchet and Drive Tools Feature:
  - Unique Socket-Lok® Safety Retention System features a spring-loaded locking button for maximum socket retention and quick disassembly when used with our Williams® locking-button square drive tools and sockets. May also be used with all standard 3/4" drive tools.
  - Two-piece ratchet design for maximum versatility.
  - Knurled handle to provide a firm, non-slip grip and extra turning power.
  - Narrow pear-shaped head for access into confined work areas.
  - High-polished chrome finish for easy cleaning.
- Chamfered ends provide easy engagement of the drive tool and fastener.
- Extended Handle extends from 23-1/2" to 36"



### 3/4" DRIVE RATCHETS AND HANDLES

#### High-Polished Chrome Finish

| Product Code | Description                   | Length (Inches) | Repair Kit |
|--------------|-------------------------------|-----------------|------------|
| 33001        | Socket-Lok Ratchet - 32 Teeth | 20              | 33001RK    |
| 33015        | Ratchet head only for 33016   | 6               |            |
| 33016        | Handle only for 33015         | 16              |            |
| 33005        | Flex Handle                   | 19              |            |
| 33006        | Sliding T-Handle              | 19              |            |

Fed. Spec: ANSI B107.10M

#### Features

- Williams 3/4" Drive Ratchet and Drive Tools Feature:
  - Unique Socket-Lok® Safety Retention System features a spring-loaded locking button for maximum socket retention and quick disassembly when used with our Williams® locking-button square drive tools and sockets. May also be used with all standard 3/4" drive tools.
  - Two-piece ratchet design for maximum versatility.
  - Knurled handle to provide a firm, non-slip grip and extra turning power.
  - Narrow pear-shaped head for access into confined work areas.
  - High-polished chrome finish for easy cleaning.
- Chamfered ends provide easy engagement of the drive tool and fastener.



### 3/4" DRIVE EXTENSIONS AND ACCESSORIES

#### High-Polished Chrome Finish

| Product Code | Description             | Length (Inches) |
|--------------|-------------------------|-----------------|
| 33002        | Extension               | 4               |
| 33003        | Extension               | 8               |
| 33004        | Extension               | 16              |
| 33007        | Universal Joint         | 4 3/16          |
| 33008        | 3/4" F x 1/2" M Adapter | 2 1/4           |
| 33009        | 3/4" F x 1" M Adapter   | 2 3/16          |
| 33011        | 1" F x 3/4" M Adapter   | 2 3/8           |

Fed. Spec: ANSI B107.10M

#### Features

- Williams 3/4" Drive Ratchet and Drive Tools Feature:
  - Unique Socket-Lok® Safety Retention System features a spring-loaded locking button for maximum socket retention and quick disassembly when used with our Williams® locking-button square drive tools and sockets. May also be used with all standard 3/4" drive tools.
  - High-polished chrome finish for easy cleaning.
- Chamfered ends provide easy engagement of the drive tool and fastener.

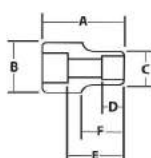


Socket-Lok® button positively locks the socket and drive tool together, providing positive retention and quick disassembly.



## 3/4" DRIVE SHALLOW 12 POINT SOCKETS, SAE

High-Polished Chrome Finish



| Product Code | Size (Inches) | A<br>OAL (Inches) | B<br>Drive End Diameter (Inches) | C<br>Working End Diameter (Inches) | D<br>Broach Depth (Inches) | E<br>Bolt Clearance Depth (Inches) | F<br>Bolt Clearance Diameter (Inches) | F<br>Nose Length (Inches) |
|--------------|---------------|-------------------|----------------------------------|------------------------------------|----------------------------|------------------------------------|---------------------------------------|---------------------------|
| H-1224       | 3/4           | 2                 | 1 1/8                            | 1 1/8                              | 1 1/8                      | 1 1/8                              | 1 1/8                                 | 1 1/8                     |
| H-1226       | 13/16         | 2                 | 1 1/8                            | 1 1/8                              | 1 1/8                      | 1 1/8                              | 1 1/8                                 | 1 1/8                     |
| H-1228       | 7/8           | 2                 | 1 1/8                            | 1 1/8                              | 1 1/8                      | 1 1/8                              | 1 1/8                                 | 1 1/8                     |
| H-1230       | 15/16         | 2                 | 1 1/8                            | 1 1/8                              | 1 1/8                      | 1 1/8                              | 1 1/8                                 | 1 1/8                     |
| H-1231       | 31/32         | 2                 | 1 1/8                            | 1 1/8                              | 1 1/8                      | 1 1/8                              | 1 1/8                                 | 1 1/8                     |
| H-1232       | 1             | 2 1/8             | 1 1/8                            | 1 1/8                              | 1 1/8                      | 1 1/8                              | 1 1/8                                 | 2 1/8                     |
| H-1234       | 1 1/16        | 2 1/8             | 1 1/8                            | 1 1/8                              | 1 1/8                      | 1 1/8                              | 1 1/8                                 | 2 1/8                     |
| H-1236       | 1 1/8         | 2 3/8             | 1 1/8                            | 1 1/8                              | 1 1/8                      | 1 1/8                              | 1 1/8                                 | 2 3/8                     |
| H-1238       | 1 1/4         | 2 1/2             | 1 1/8                            | 1 1/8                              | 1 1/8                      | 1 1/8                              | 1 1/8                                 | 2 1/2                     |
| H-1240       | 1 1/2         | 2 3/4             | 1 1/8                            | 1 1/8                              | 1 1/8                      | 1 1/8                              | 1 1/8                                 | 2 3/4                     |
| H-1242       | 1 5/8         | 2 7/8             | 1 1/8                            | 1 1/8                              | 1 1/8                      | 1 1/8                              | 1 1/8                                 | 2 7/8                     |
| H-1244       | 1 3/4         | 3                 | 1 1/8                            | 1 1/8                              | 1 1/8                      | 1 1/8                              | 1 1/8                                 | 3                         |
| H-1246       | 1 7/8         | 3 1/8             | 1 1/8                            | 1 1/8                              | 1 1/8                      | 1 1/8                              | 1 1/8                                 | 3 1/8                     |
| H-1248       | 2             | 3 1/4             | 1 1/8                            | 1 1/8                              | 1 1/8                      | 1 1/8                              | 1 1/8                                 | 3 1/4                     |
| H-1250       | 2 1/8         | 3 1/2             | 1 1/8                            | 1 1/8                              | 1 1/8                      | 1 1/8                              | 1 1/8                                 | 3 1/2                     |
| H-1252       | 2 1/4         | 3 3/8             | 1 1/8                            | 1 1/8                              | 1 1/8                      | 1 1/8                              | 1 1/8                                 | 3 3/8                     |
| H-1254       | 2 3/8         | 3 1/2             | 1 1/8                            | 1 1/8                              | 1 1/8                      | 1 1/8                              | 1 1/8                                 | 3 1/2                     |
| H-1256       | 2 1/2         | 3 3/4             | 1 1/8                            | 1 1/8                              | 1 1/8                      | 1 1/8                              | 1 1/8                                 | 3 3/4                     |
| H-1258       | 2 5/8         | 3 7/8             | 1 1/8                            | 1 1/8                              | 1 1/8                      | 1 1/8                              | 1 1/8                                 | 3 7/8                     |
| H-1260       | 3             | 4                 | 1 1/8                            | 1 1/8                              | 1 1/8                      | 1 1/8                              | 1 1/8                                 | 4                         |
| H-1264       | 3 1/4         | 4 1/4             | 1 1/8                            | 1 1/8                              | 1 1/8                      | 1 1/8                              | 1 1/8                                 | 4 1/4                     |
| H-1266       | 3 1/2         | 4 1/2             | 1 1/8                            | 1 1/8                              | 1 1/8                      | 1 1/8                              | 1 1/8                                 | 4 1/2                     |
| H-1268       | 3 3/4         | 4 3/4             | 1 1/8                            | 1 1/8                              | 1 1/8                      | 1 1/8                              | 1 1/8                                 | 4 3/4                     |
| H-1270       | 4             | 5                 | 1 1/8                            | 1 1/8                              | 1 1/8                      | 1 1/8                              | 1 1/8                                 | 5                         |
| H-1272       | 4 1/4         | 5 1/4             | 1 1/8                            | 1 1/8                              | 1 1/8                      | 1 1/8                              | 1 1/8                                 | 5 1/4                     |
| H-1274       | 4 1/2         | 5 1/2             | 1 1/8                            | 1 1/8                              | 1 1/8                      | 1 1/8                              | 1 1/8                                 | 5 1/2                     |
| H-1276       | 4 3/4         | 5 3/4             | 1 1/8                            | 1 1/8                              | 1 1/8                      | 1 1/8                              | 1 1/8                                 | 5 3/4                     |

Fed. Spec: ANSI B107.110

**WSH-16TB 16 Piece 3/4" Drive Shallow 12-Point Socket Set with TB-49 Tool Box**

**WSH-16RC 16 Piece 3/4" Drive Shallow 12-Point Socket Set on Clip Rails**

Contents Include:

| Product Code | Size (Inches) | Product Code | Size (Inches) | Product Code | Size (Inches) | Product Code | Size (Inches) |
|--------------|---------------|--------------|---------------|--------------|---------------|--------------|---------------|
| H-1228       | 7/8           | H-1236       | 1 1/8         | H-1246       | 1 7/8         | H-1256       | 1 3/4         |
| H-1230       | 15/16         | H-1240       | 1 1/2         | H-1248       | 2             | H-1258       | 2 1/8         |
| H-1232       | 1             | H-1242       | 1 5/8         | H-1252       | 1 3/4         | H-1260       | 3             |
| H-1234       | 1 1/16        | H-1244       | 1 3/4         | H-1254       | 1 11/16       | H-1264       | 3 1/4         |

**WSH-26RC 26 Piece 3/4" Drive Shallow 12-Point Socket Set on Clip Rails**

Contents Include:

| Product Code | Size (Inches) | Product Code | Size (Inches) | Product Code | Size (Inches) | Product Code | Size (Inches) |
|--------------|---------------|--------------|---------------|--------------|---------------|--------------|---------------|
| H-1224       | 3/4           | H-1238       | 1 13/16       | H-1252       | 1 5/8         | H-1268       | 2 1/2         |
| H-1226       | 13/16         | H-1240       | 1 1/4         | H-1254       | 1 11/16       | H-1270       | 2 3/8         |
| H-1228       | 7/8           | H-1242       | 1 5/8         | H-1256       | 1 3/4         | H-1272       | 2 1/2         |
| H-1230       | 15/16         | H-1244       | 1 3/4         | H-1258       | 1 13/16       | H-1274       | 2 3/4         |
| H-1232       | 1             | H-1246       | 1 7/8         | H-1260       | 3             | H-1276       | 2 5/8         |
| H-1234       | 1 1/16        | H-1248       | 2             | H-1264       | 3 1/4         |              |               |
| H-1236       | 1 1/8         | H-1250       | 2 1/8         | H-1266       | 3 1/2         |              |               |

Features

- SUPERTORQUE® lobular openings for greater turning power without deforming the fastener.
- Designed for quick engagement on both 6 and 12 point fasteners.





## 3/4" DRIVE SHALLOW 12 POINT SOCKETS, SAE

### High-Polished Chrome Finish

| Product Code | Size (Inches) | A<br>OAL (Inches) | B<br>Drive End Diameter (Inches) | C<br>Working End Diameter (Inches) | F<br>Nose Length (Inches) |
|--------------|---------------|-------------------|----------------------------------|------------------------------------|---------------------------|
| 33228        | 7/8           | 1 15/16           | 1 7/16                           | 1 1/4                              | 35/64                     |
| 33230        | 15/16         | 2                 | 1 7/16                           | 1 3/8                              | 5/8                       |
| 33232        | 1             | 2 1/8             | 1 7/16                           | 1 7/16                             | 5/8                       |
| 33234        | 1 1/16        | 2 1/8             | 1 7/16                           | 1 1/2                              | 7/8                       |
| 33236        | 1 1/8         | 2 1/8             | 1 1/2                            | 1 5/16                             | 7/8                       |
| 33238        | 1 3/16        | 2 1/8             | 1 1/2                            | 1 11/16                            | 15/16                     |
| 33240        | 1 1/4         | 2 3/8             | 1 1/2                            | 1 3/4                              | 15/16                     |
| 33242        | 1 5/16        | 2 3/8             | 1 1/2                            | 1 13/16                            | 1                         |
| 33244        | 1 3/8         | 2 1/4             | 1 5/8                            | 1 7/8                              | 1                         |
| 33246        | 1 7/8         | 2 1/4             | 1 5/8                            | 1 13/32                            | 1 1/64                    |
| 33248        | 1 1/2         | 2 3/8             | 1 3/4                            | 2 1/16                             | 1 1/64                    |
| 33250        | 1 5/8         | 2 7/16            | 1 3/4                            | 2 1/8                              | 1 3/16                    |
| 33252        | 1 5/8         | 2 1/2             | 1 3/4                            | 2 3/16                             | 1 3/16                    |
| 33256        | 1 3/4         | 2 3/8             | 1 13/16                          | 2 3/16                             | 1 1/4                     |
| 33258        | 1 13/16       | 2 11/16           | 1 13/16                          | 2 3/8                              | 1 1/4                     |
| 33260        | 1 7/8         | 2 3/4             | 1 7/8                            | 2 1/2                              | 1 11/32                   |
| 33264        | 2             | 2 13/16           | 1 7/8                            | 2 11/16                            | 1 13/32                   |

Fed. Spec: ANSI B107.110

### 33920 11 Piece 3/4" Drive Shallow 12-Point Socket Set on Clip Rails

#### Contents Include:

| Product Code | Size (Inches) | Product Code | Size (Inches) | Product Code | Size (Inches) |
|--------------|---------------|--------------|---------------|--------------|---------------|
| 33228        | 7/8           | 33236        | 1 1/8         | 33244        | 1 3/8         |
| 33230        | 15/16         | 33238        | 1 3/16        | 33246        | 1 7/16        |
| 33232        | 1             | 33240        | 1 1/4         | 33248        | 1 1/2         |
| 33234        | 1 1/16        | 33242        | 1 5/16        |              |               |

### 33922 16 Piece 3/4" Drive Shallow 12-Point Socket Set on Clip Rails

#### Contents Include:

| Product Code | Size (Inches) | Product Code | Size (Inches) | Product Code | Size (Inches) |
|--------------|---------------|--------------|---------------|--------------|---------------|
| 33228        | 7/8           | 33242        | 1 5/16        | 33260        | 1 7/8         |
| 33230        | 15/16         | 33244        | 1 3/8         | 33264        | 2             |
| 33232        | 1             | 33246        | 1 7/16        |              |               |
| 33234        | 1 1/16        | 33248        | 1 1/2         |              |               |
| 33236        | 1 1/8         | 33252        | 1 5/8         |              |               |
| 33238        | 1 3/16        | 33256        | 1 3/4         |              |               |
| 33240        | 1 1/4         | 33258        | 1 13/16       |              |               |

#### Features

- Williams 3/4" Drive Hand Sockets and Drive Tools Feature:
  - Unique Socket-Lok® Safety Retention System features a spring-loaded locking button for maximum socket retention and quick disassembly when used with our Williams® locking-button square drive tools and sockets. May also be used with all standard 3/4" drive tools.
  - Sockets feature a deep chamfer on the drive end to speed insertion onto the drive tool.
  - Chamfered ends provide easy engagement of the drive tool and fastener.
  - SUPERTORQUE® recessed corners in socket end provide extra turning power.
  - High-polished chrome finish tools clean easily and resist rust.
- Designed for quick engagement on both 6 and 12 point fasteners.

