



27 PIECE 1" DRIVE SOCKET AND DRIVE TOOL SET

12 Point SAE, with Metal Box

Product Code	Description
WSX-28TB	27 Piece Tool Set with TB-12 Metal Tool Box
WSX-28	27 Piece Tool Set Only

Contents Include:

Drive Tools:		Shallow 12-Point Sockets	
Product Code	Description	Product Code	Size (Inches)
X-20	20" Sliding T-Handle/Head	X-1252	1 5/8
X-41C	34 3/16" Flex Handle	X-1258	1 13/16
X-51B	20" Ratchet	X-1260	1 7/8
X-110	8" Extension	X-1264	2
X-115	16" Extension	X-1268	2 1/8
		X-1270	2 3/16
		X-1272	2 1/4
		X-1276	2 3/8
		X-1280	2 1/2
		X-1282	2 9/16
		X-1284	2 5/8
		X-1288	2 3/4
		X-1294	2 15/16
		X-1296	3
		X-12100	3 1/8



Features

- All tools are professional quality, made of high-grade chrome vanadium steel.
- Sockets feature SUPERTORQUE® lobular openings for greater turning power without deforming the fastener.
- Metal tool box made for years of rugged use.



WSX-28TB



19 PIECE 1" DRIVE SOCKET AND DRIVE TOOL SET

12 Point SAE, with Metal Box

Product Code	Description
WSX-21TB	19 Piece Tool Set with TB-12 Metal Tool Box
WSX-21	19 Piece Tool Set Only

Contents Include:

Drive Tools:		Shallow 12-Point Sockets	
Product Code	Description	Product Code	Size (Inches)
X-20	20" Sliding T-Handle / Head	X-1260	1 7/8
X-41C	34 3/16" Flex Handle	X-1264	2
X-51B	20" Ratchet	X-1270	2 3/16
X-110	8" Extension	X-1272	2 1/4
X-115	16" Extension	X-1276	2 3/8
		X-1280	2 1/2
		X-1282	2 9/16
		X-1284	2 5/8
		X-1288	2 3/4
		X-1294	2 15/16
		X-1296	3



Features

- All tools are professional quality, made of high-grade chrome vanadium steel.
- Sockets feature SUPERTORQUE® lobular openings for greater turning power without deforming the fastener.
- Metal tool box made for years of rugged use.



WSX-21TB

1" DRIVE

SOCKETS AND
DRIVE TOOLS

404



WILLIAMS®



19 PIECE 1" DRIVE SOCKET AND DRIVE TOOL SET

12 Point SAE, with Metal Box

Product Code	Description
WSX-20TB	19 Piece Tool Set with TB-12 Metal Tool Box
WSX-20	19 Piece Tool Set Only

Contents Include:

Drive Tools:		Shallow 12-Point Sockets	
Product Code	Description	Product Code	Size (Inches)
X-20	20" Sliding T-Handle/Head	X-1242	1 5/16
X-41C	34 3/8" Flex Handle	X-1244	1 3/8
X-51B	20" Ratchet	X-1246	1 7/16
X-110	8" Extension	X-1248	1 1/2
X-115	16" Extension	X-1252	1 5/8
		X-1258	1 13/16
		X-1260	1 7/8
		X-1264	2
		X-1270	2 3/16
		X-1272	2 1/4
		X-1276	2 5/8



Features

- All tools are professional quality, made of high-grade chrome vanadium steel.
- Sockets feature SUPERTORQUE® lobular openings for greater turning power without deforming the fastener.
- Metal tool box made for years of rugged use.



WSX-20TB

WILLIAMS®

1" DRIVE RATCHETS

Integrated Handle, Chrome Finish

Product Code	Description	Length (Inches)	Number of Teeth
X-51B	Chrome Ratchet	20 1/8	24
X-52EHRK	Repair Kit for X-51B		

Fed. Spec: ANSI B107.10M



Features

- Forged one-piece ratchet provide strength and safety for industrial applications.
- Smooth comfort-grip handle permits all-day use without gloves.
- 24 tooth gear with 15 degree of engagement allows engagement in tight working areas.
- Chrome finish with mirror-like exterior can be easily cleaned after each use.
- Single Pawl ratchet design:
 - 1) Designed for tighter tolerances between pawl and gear which reduces metal fatigue and slippage under load.
 - 2) Does not require as many working parts, reducing possible breakage and parts to repair.
- Easy access reverse lever allows user to change working direction quickly and easily with only one hand.
- Spring and plunger socket retention.



X-51B

1" DRIVE

SOCKETS AND
DRIVE TOOLS



1" DRIVE REMOVABLE-HANDLE RATCHETS

Knurled Handle, Chrome Finish

Product Code	Description	Length (Inches)	Number of Teeth
--------------	-------------	-----------------	-----------------

Complete Ratchet

X-52A1	Ratchet with 36" Handle	41	24
--------	-------------------------	----	----

Components

X-52	Ratchet Head Only	7 13/16	24
X-52H36	Handle Only	36	24
X-52EHRK	Repair Kit		

Note: Head Bore and Handle End Diameter: 1-7/64"

Fed. Spec: ANSI B107.10M



Features

- 24 teeth action provides an 15° ratcheting angle.
- Shift lever reverses action instantly.
- Dual socket retention, with both ball and plunger on male drive for versatility.
- Removable handle makes the tool more versatile, and storage easier.
- Knurled handle provides a non-slip grip.
- Chrome finish models provides increased protection from rust and corrosion.
- Our most rugged, high torque capacity ratchet.



X-52



X-52A1



X-52H36



1" DRIVE HANDLES

Chrome and Black Industrial Finish

Product Code	Description	Length (Inches)	Finish
X-41C	Flex Handle Breaker Bar, Knurled Grip	34 3/16	Chrome
X-41CB	Flex Handle Breaker Bar, Knurled Grip	34 3/16	Black Industrial
X-20	Sliding T-Handle	20	Chrome

Sliding T-Handle Components

X-20B	Handle	20	Chrome
X-20C	Sliding Head	1 13/16	Chrome

Fed. Spec: ANSI B107.10M



Features

- Chrome plating provides increased protection from rust and corrosion.
- Drive handles provide extra leverage with greater strength than ratchets.
- Square drive slides on T-Handles for versatility.
- Flex handle flex drive swivels 110° in either direction.
- Spring and plunger socket retention.



X-41C



X-41CB



X-20



1" DRIVE EXTENSIONS

Chrome Finish

Product Code	Length (Inches)
X-110	8
X-115	16

Fed. Spec: ANSI B107.10M



Features

- Chrome plating provides increased protection from rust and corrosion.
- Ball and spring socket retention.
- Hole in wall of drive end accommodates plunger for firm tool retention.



X-110



X-115



WILLIAMS

12 F

1" DRIVE SHALLOW 12 POINT SOCKETS, SAE

High-Polished Chrome Finish



Product Code	Size (Inches)	OAL (Inches)	Drive End Diameter (Inches)	Working End Diameter (Inches)	Broach Depth (Inches)	Bolt Clearance Depth (Inches)	Bolt Clearance Diameter (Inches)	Nose Length (Inches)
X-1234	1 1/8	2 1/4	2	1 5/8	3/4	1 1/8	13/16	7/8
X-1236	1 1/8	2 1/4	2	1 3/4	3/4	1 1/8	13/16	7/8
X-1240	1 1/4	2 3/8	2	1 7/8	3/4	1 1/8	13/16	7/8
X-1242	1 5/16	2 1/2	2	2 1/16	13/16	1 9/32	15/16	1 9/16
X-1244	1 3/8	2 1/2	2	2 1/8	7/8	1 11/32	1 13/32	1 9/16
X-1246	1 7/16	2 3/4	2	2 3/16	1	1 15/32	1 1/2	1 11/16
X-1248	1 1/2	2 3/4	2	2 1/4	1	1 15/32	1 9/16	1 13/16
X-1252	1 5/8	2 3/4	2	2 3/8	1 1/8	1 3/4	1 11/16	1 15/16
X-1254	1 11/16	2 3/4	2	2 3/8	1 3/16	1 9/16	1 3/4	1 15/16
X-1256	1 3/4	3	2	2 5/8	1 1/4	1 27/32	1 13/16	2 1/16
X-1258	1 15/16	3 1/8	2 1/8	2 3/8	1 1/4	1 31/32	1 7/8	2 3/16
X-1260	1 7/8	3 1/4	2 1/8	2 3/4	1 1/2	2 3/32	1 7/8	2 5/16
X-1264	2	3 3/8	2 1/8	2 15/16	1 1/2	2 1/4	1 7/8	2 7/16
X-1268	2 1/8	3 1/2	2 1/4	3 1/8	1 1/2	2 11/32	1 7/8	2 9/16
X-1270	2 3/16	3 3/8	2 1/4	3 1/8	1 11/32	2 15/32	2 1/4	2 11/16
X-1272	2 1/4	3 3/4	2 1/4	3 1/4	1 5/8	2 5/8	2 11/32	2 23/32
X-1276	2 3/8	3 7/8	2 1/4	3 3/8	1 5/8	2 3/4	2 3/8	2 13/16
X-1280	2 1/2	4 1/8	2 1/4	3 1/2	1 3/4	2 31/32	2 1/2	3 1/16
X-1282	2 9/16	4 1/8	2 1/4	3 5/16	1 13/16	2 31/32	2 9/16	3 3/16
X-1284	2 5/8	4 1/4	2 1/4	3 3/8	1 7/8	3 3/32	2 5/8	3 1/8
X-1288	2 3/4	4 1/2	2 1/4	3 3/4	2	3 3/8	2 3/4	3 9/16
X-1294	2 15/16	4 27/32	2 1/4	4	2 1/8	3 25/32	2 15/16	3 25/32
X-1296	3	4 7/8	2 1/4	4 1/8	2 1/8	3 3/4	3	3 27/32
X-12100	3 1/8	4 31/32	2 1/4	4 1/4	2 1/8	3 27/32	3 1/8	3 29/32

Fed. Spec: ANSI B107.1

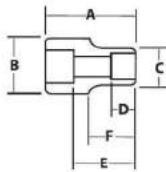
WSX-17 17 Piece 1" Drive Shallow 12-Point Socket Set

Contents Include:

Product Code	Size (Inches)	Product Code	Size (Inches)	Product Code	Size (Inches)
X-1234	1 1/8	X-1248	1 1/2	X-1264	2
X-1236	1 1/8	X-1252	1 5/8	X-1268	2 1/8
X-1240	1 1/4	X-1254	1 11/16	X-1270	2 3/16
X-1242	1 5/16	X-1256	1 3/4	X-1272	2 1/4
X-1244	1 3/8	X-1258	1 15/16	X-1276	2 3/8
X-1246	1 7/16	X-1260	1 7/8		

Features

- SUPERTORQUE® lobular openings for greater turning power without deforming the fastener.
- Designed for quick engagement on both 6 and 12 point fasteners.



7-107



7-140B



7-8

WILLIAMS

1" DRIVE IMPACT EXTENSIONS AND ACCESSORIES

Black Industrial Finish

Product Code	Description	Length (Inches)	Use RET RING®	Use O-Ring / Pin	Socket Retention
7-107	Impact Extension	7 1/4	7-2XS	7-1B / 7-2D	Through Hole and Pin
7-113	Impact Extension	13	7-2XS	7-1B / 7-2D	Through Hole and Pin
7-140B	Impact Universal Joint	4 1/2	7-3XS	7-1B / 7-2D	Through Hole and Pin
7-6	3/4"M x 1"F Adapter	3	7-2XS	7-1B / 7-2D	Through Hole and Pin
7-8	1 1/2"M x 1"F Adapter	3 3/8	7-2XS	7-1B / 7-2D	Through Hole and Pin

Fed. Spec: ANSI B107.2

Features

- Specially heat treated for impact use to provide long life, safety, and durability.
- Pin and o-ring or RET RING® (sold separately) secure tools onto impact wrench for safety and convenience.
- Universal joint provides 55° range of motion.
- Suitable for use with pneumatic and electric impact wrenches.
- Drive end features pin retention hole and groove.



1" DRIVE

SOCKETS AND DRIVE TOOLS



1" DRIVE IMPACT EXTENSIONS AND ACCESSORIES

Black Industrial Finish

Product Code	Description	Length (Inches)	Use RET RING®	Use O-Ring / Pin	Socket Retention
39003	Impact Extension	7	7-2XS	7-1B / 7-2D	Through Hole and Pin
39004	Impact Extension	13	7-2XS	7-1B / 7-2D	Through Hole and Pin
39002	Impact Universal Joint	4 1/2	7-3XS	7-1B / 7-2D	Through Hole and Pin
39005	3/4" M X 1" F Adapter	3	7-2XS	7-1B / 7-2D	Through Hole and Pin
39006	1-1/2" M X 1" F Adapter	3 3/8	7-2XS	7-1B / 7-2D	Through Hole and Pin

Fed. Spec: ANSI B107.2

Features

- Specially heat treated for impact use to provide long life, safety, and durability
- Pin and o-ring or RET RING® (sold separately) secure tools onto impact wrench for safety and convenience
- Universal joint provides 55° range of motion
- Suitable for use with pneumatic and electric impact wrenches
- Drive end features pin retention hole and groove



1" DRIVE IMPACT RETAINING PINS AND RINGS

Black Industrial Finish

Product Code	Description	Diameter	Length	Application
7-1B	Impact Retaining O-Ring	2	NA	Fits Williams Impact Tools with "B" Dimension to 2 3/8"
7-2D	Impact Retaining Pin	3/16	1 3/4	Fits Williams Impact Tools with "B" Dimension to 2 3/8"
7-1C	Impact Retaining O-Ring	3 1/4	NA	Fits Williams Impact Tools with "B" Dimension of 3 1/4"
7-2F	Impact Retaining Pin	3/16	2 7/8	Fits Williams Impact Tools with "B" Dimension of 3 1/4"

Features

- Specially heat treated for impact use to provide long life, safety, and durability.
- Suitable for use with pneumatic and electric impact wrenches.
- For 1" Drive impact tools with pin retention hole and groove.



1" DRIVE RET RING® ONE-PIECE IMPACT RETAINING RINGS WITH CRUSH GAUGE

Product Code	Groove Diameter (Inches)	Application
7-1XS	1 3/4	Fits Competitive Impact Sockets
7-2XS	2	Fits Williams 1" Drive Tools with "B" Dimension of 2 1/8" and 2 1/4"
7-3XS	2 1/8	Fits Williams 1" Drive Tools with "B" Dimension of 2 3/8"
7-4XS	2 1/4	Fits Competitive Impact Sockets
7-5XS	2 1/2	Fits Competitive Impact Sockets
7-6XS	2 5/8	Fits Competitive Impact Sockets

Features

- Fits all Williams 1" Drive Sockets and Accessories
- Crush Gauge on the resin pin indicates when a socket is excessively worn and should be replaced.
- Securely retains sockets and accessories to square drive of impact wrench
- For 1" drive impact tools with pin retention hole and groove
- Made of oil resistant material
- RET RING® is a trademark of FTL Enterprises, Inc.



1" DRIVE



1" DRIVE BUDD® WHEEL IMPACT SOCKET, 6 POINT, SAE

Black Industrial Finish

Product Code	Size (Inches)	A OAL (Inches)	B Drive End Diameter (Inches)	C Working End Diameter (Inches)	D Broach Depth (Inches)	E Bolt Clearance Depth (Inches)	Bolt Clearance Diameter (Inches)
17-648BW	1 3/8" Square / 1 1/2" Hex	4	1 3/4	2 1/4	1 7/16	2 1/4	1 1/4

Fed. Spec: ANSI B107.2

Features

- SUPERTORQUE® lobular openings for greater turning power without deforming the fastener.
- 13/16" square opening threads stud into wheel.
- 1-1/2" hex opening engages and tightens the wheel lug nut.
- Suitable for use with pneumatic and electric impact wrenches.
- Specially heat treated for impact use to provide long life, safety, and durability.



17-648BW

408



SOCKETS AND DRIVE TOOLS



TOOLS @ HEIGHT
DROP PREVENTION SYSTEM

Side hole in socket permits use with Snap-on Industrial Brands Tools@Height drive tools such as ratchets, extensions and u-joints



39654

1" DRIVE SHALLOW IMPACT SOCKETS, 6 POINT, SAE

Black Industrial Finish

Product Code	Size (Inches)	A OAL (Inches)	B Drive End Diameter (Inches)	C Working End Diameter (Inches)	D Broach Depth (Inches)	E Bolt Clearance Depth (Inches)	Bolt Clearance Diameter (Inches)	F Nose Length (Inches)	Uses RET RING® Number	Use O-Ring / Pin
39624	3/4	2 1/8	2 1/8	1 1/8	1 1/8	1 1/8	3/4	7/8	7-2XS	7-1B / 7-2D
39626	13/16	2 1/8	2 1/8	1 1/8	1 1/8	1 1/8	3/4	7/8	7-2XS	7-1B / 7-2D
39628	7/8	2 1/8	2 1/8	1 1/2	1 1/8	1 1/8	3/4	7/8	7-2XS	7-1B / 7-2D
39630	15/16	2 1/8	2 1/8	1 13/16	1 1/8	1 1/8	3/4	7/8	7-2XS	7-1B / 7-2D
39632	1	2 1/4	2 1/8	1 11/16	1 1/8	1 1/8	3/4	7/8	7-2XS	7-1B / 7-2D
39634	1 1/16	2 1/4	2 1/8	1 3/4	1 1/8	1 1/8	3/4	7/8	7-2XS	7-1B / 7-2D
39636	1 1/8	2 1/4	2 1/8	1 7/8	1 1/8	1 1/8	13/16	7/8	7-2XS	7-1B / 7-2D
39638	1 3/16	2 1/4	2 1/8	1 7/8	1 1/8	1 1/8	13/16	7/8	7-2XS	7-1B / 7-2D
39640	1 1/4	2 3/8	2 1/8	2	3/4	1 3/16	13/16	7/8	7-2XS	7-1B / 7-2D
39642	1 1/2	2 1/2	2 1/8	2 1/16	7/8	1 3/16	1	1	7-2XS	7-1B / 7-2D
39644	1 5/8	2 1/2	2 1/8	2 1/8	7/8	1 3/16	1 1/8	-	7-2XS	7-1B / 7-2D
39646	1 7/8	2 1/2	2 1/4	2 1/4	23/32	1 3/16	1 1/8	-	7-2XS	7-1B / 7-2D
39648	1 1/2	2 3/8	2 1/4	2 13/32	13/16	1 13/32	1 1/8	1 3/8	7-2XS	7-1B / 7-2D
39650	1 5/8	2 3/8	2 1/4	2 3/8	13/16	1 1/8	1 1/8	1 3/8	7-2XS	7-1B / 7-2D
39652	1 5/8	2 3/4	2 1/4	2 3/8	1 1/8	1 1/8	1 13/32	1 3/4	7-2XS	7-1B / 7-2D
39654	1 11/16	2 3/4	2 3/8	2 13/32	1 1/8	1 1/8	1 13/32	1 3/4	7-3XS	7-1B / 7-2D
39656	1 3/4	2 3/4	2 3/8	2 3/8	1 1/2	1 23/32	1 1/8	1 3/4	7-3XS	7-1B / 7-2D
39658	1 15/16	2 13/16	2 3/8	2 3/4	1 3/16	1 23/32	1 13/16	1 15/16	7-3XS	7-1B / 7-2D
39660	1 7/8	2 15/16	2 3/8	2 3/4	1 3/16	1 23/32	1 1/8	1 15/16	7-3XS	7-1B / 7-2D
39662	1 15/16	2 15/16	2 3/8	2 3/4	1 3/16	1 23/32	1 1/8	1 15/16	7-3XS	7-1B / 7-2D
39664	2	3 1/8	2 3/8	3	1 1/2	1 31/32	1 13/32	2 1/8	7-3XS	7-1B / 7-2D
39666	2 1/16	3 1/8	2 3/8	3	1 1/2	1 31/32	1 1/8	2 1/8	7-3XS	7-1B / 7-2D
39668	2 1/8	3 1/4	2 3/8	3 1/8	1 1/2	1 31/32	1 3/8	2 1/4	7-3XS	7-1B / 7-2D
39670	2 3/16	3 3/8	2 3/8	3 1/4	1 1/8	2 1/32	1 3/8	2 3/8	7-3XS	7-1B / 7-2D
39672	2 1/4	3 3/8	2 3/8	3 1/4	1 1/8	2 1/32	1 3/8	2 3/8	7-3XS	7-1B / 7-2D
39674	2 5/16	3 1/2	2 3/8	3 3/8	1 1/2	2 3/32	1 3/4	2 1/2	7-3XS	7-1B / 7-2D
39676	2 3/8	3 1/2	2 3/8	3 1/2	1 1/2	2 1/32	1 3/4	2 1/2	7-3XS	7-1B / 7-2D
39678	2 1/2	3 1/2	2 3/8	3 1/2	1 1/2	2 1/32	1 3/4	2 1/2	7-3XS	7-1B / 7-2D
39680	2 1/2	3 3/8	2 3/8	3 1/2	1 3/8	2 1/32	2 1/8	2 1/2	7-3XS	7-1B / 7-2D
39682	2 5/8	3 3/8	2 3/8	3 3/8	1 3/8	2 1/32	2 1/8	2 3/8	7-3XS	7-1B / 7-2D
39684	2 3/4	3 3/8	2 3/8	3 3/4	1 3/8	2 1/32	2 3/8	2 3/8	7-3XS	7-1B / 7-2D
39686	2 11/16	3 7/8	2 3/8	3 3/4	1 13/16	2 1/32	2	2 3/8	7-3XS	7-1B / 7-2D
39688	2 3/4	3 7/8	2 3/8	3 3/4	1 13/16	2 1/32	2 1/4	2 3/8	7-3XS	7-1B / 7-2D
39690	2 15/16	4	2 3/8	4	1 15/16	2 1/16	2	3	7-3XS	7-1B / 7-2D
39692	2 7/8	4	2 3/8	4	1 15/16	2 1/16	2	3	7-3XS	7-1B / 7-2D
39694	2 15/16	4 3/16	2 3/8	4 1/8	2 1/32	2 1/16	2 13/16	3 1/8	7-3XS	7-1B / 7-2D
39696	3	4 3/8	2 3/8	4 1/4	2 1/8	3 1/8	2 3/8	3 3/8	7-3XS	7-1B / 7-2D

Feat. Spec: ANSI B107.2

Features

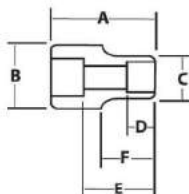
- SUPERTORQUE® lobular openings for greater turning power without deforming the fastener.
- Designed for maximum engagement on 6 point fasteners.
- Suitable for use with pneumatic and electric impact wrenches.
- Specially heat treated for impact use to provide long life, safety, and durability.

TOOLS @ HEIGHT
DROP PREVENTION SYSTEM

Side hole in socket permits use with Snap-on Industrial Brands Tools@Height drive tools such as ratchets, extensions and u-joints



7M-650



1" DRIVE SHALLOW IMPACT SOCKETS, 6 POINT, METRIC

Black Industrial Finish

Product Code	Size (MM)	A OAL (Inches)	B Drive End Diameter (Inches)	C Working End Diameter (Inches)	D Broach Depth (Inches)	E Bolt Clearance Depth (Inches)	Bolt Clearance Diameter (Inches)	F Nose Length (Inches)	Uses RET RING® Number	Use O-Ring / Pin
7M-627	27	2 1/4	2 1/8	1 3/4	1 1/8	1 1/8	3/4	7/8	7-2XS	7-1B / 7-2D
7M-630	30	2 1/4	2 1/8	1 7/8	1 1/8	1 1/8	13/16	7/8	7-2XS	7-1B / 7-2D
7M-632	32	2 3/8	2 1/8	2	3/4	1 3/16	13/16	7/8	7-2XS	7-1B / 7-2D
7M-635	35	2 1/2	2 1/8	2 1/8	7/8	1 1/8	1 3/8	-	7-2XS	7-1B / 7-2D
7M-638	38	2 3/8	2 1/4	2 11/32	13/16	1 13/32	1 1/2	1 5/8	7-2XS	7-1B / 7-2D
7M-641	41	2 3/4	2 1/4	2 3/8	1 1/8	1 3/8	1 13/32	1 3/4	7-2XS	7-1B / 7-2D
7M-646	46	2 15/16	2 3/8	2 3/4	1 3/16	1 23/32	1 13/16	1 15/16	7-3XS	7-1B / 7-2D
7M-650	50	3	2 3/8	2 3/4	1 1/4	1 23/32	1 81/64	2	7-3XS	7-1B / 7-2D
7M-660	60	3 1/2	2 3/8	3 1/2	1 1/2	2 1/32	1 3/4	2 1/2	7-3XS	7-1B / 7-2D
7M-665	65	3 3/8	2 3/8	3 3/8	1 5/8	2 1/8	2 1/4	2 3/8	7-3XS	7-1B / 7-2D
7M-670	70	3 7/8	2 3/8	3 3/4	1 13/16	2 1/32	2 3/4	2 3/8	7-3XS	7-1B / 7-2D
7M-675	75	4 3/16	2 3/8	4 1/8	2 1/32	2 1/16	2 13/16	3 1/8	7-3XS	7-1B / 7-2D

Features

- SUPERTORQUE® lobular openings for greater turning power without deforming the fastener.
- Designed for maximum engagement on 6 point fasteners.
- Suitable for use with pneumatic and electric impact wrenches.
- Specially heat treated for impact use to provide long life, safety, and durability.
- Drive end features pin retention hole and groove.
- Dual marked with corresponding SAE size.



1" DRIVE

SOCKETS AND DRIVE TOOLS

WILLIAMS®



1" DRIVE SHALLOW IMPACT SOCKETS, 6 POINT, SAE

Black Industrial Finish

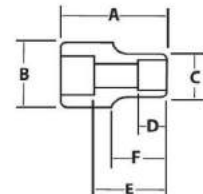
Product Code	A		B	C	D	E	Bolt Clearance Diameter (Inches)	Nose Length (Inches)	F	Uses RET RING® Number	Use O-Ring / Pin
	Size (Inches)	OAL (Inches)	Drive End Diameter (Inches)	Working End Diameter (Inches)	Broach Depth (Inches)	Bolt Clearance Depth (Inches)					
7-624	3/4	2 1/8	2 1/8	1 7/16	1 1/16	1 5/16	3/4	7/8	7-2XS	7-1B / 7-2D	
7-626	13/16	2 1/8	2 1/8	1 7/16	1 1/16	1 5/16	3/4	7/8	7-2XS	7-1B / 7-2D	
7-628	7/8	2 1/8	2 1/8	1 1/2	1 1/16	1 5/16	3/4	7/8	7-2XS	7-1B / 7-2D	
7-630	15/16	2 1/8	2 1/8	1 15/32	5/8	1 5/16	3/4	7/8	7-2XS	7-1B / 7-2D	
7-632	1	2 1/4	2 1/4	1 11/16	1 1/16	1 1/8	3/4	7/8	7-2XS	7-1B / 7-2D	
7-634	1 1/16	2 1/4	2 1/4	1 3/4	1 1/16	1 1/8	3/4	7/8	7-2XS	7-1B / 7-2D	
7-636	1 1/8	2 1/4	2 1/4	1 7/8	1 1/16	1 1/8	13/16	7/8	7-2XS	7-1B / 7-2D	
7-638	1 3/16	2 1/4	2 1/4	1 7/8	1 1/16	1 1/8	1 1/16	7/8	7-2XS	7-1B / 7-2D	
7-640	1 1/4	2 3/8	2 1/4	2	3/4	1 3/16	1 5/16	7/8	7-2XS	7-1B / 7-2D	
7-642	1 5/16	2 1/2	2 1/4	2 1/8	7/8	1 5/16	1	1	7-2XS	7-1B / 7-2D	
7-644	1 3/8	2 1/2	2 1/4	2 1/8	7/8	1 5/16	1 3/8	-	7-2XS	7-1B / 7-2D	
7-646	1 7/16	2 1/2	2 1/4	2 1/4	29/64	1 5/16	1 7/16	-	7-2XS	7-1B / 7-2D	
7-648	1 1/2	2 5/8	2 1/4	2 11/32	15/16	1 5/8	1 1/2	1 3/8	7-2XS	7-1B / 7-2D	
7-650	1 5/8	2 5/8	2 1/4	2 3/8	15/16	1 7/8	1 5/8	1 3/8	7-2XS	7-1B / 7-2D	
7-652	1 3/4	2 3/4	2 1/4	2 1/2	1 1/16	1 3/8	1 15/32	1 3/4	7-2XS	7-1B / 7-2D	
7-654	1 11/16	2 3/4	2 3/8	2 15/32	1 1/8	1 3/8	1 7/16	1 3/4	7-3XS	7-1B / 7-2D	
7-656	1 3/4	2 3/8	2 3/8	2 3/8	1 5/16	1 29/32	1 7/16	1 3/8	7-3XS	7-1B / 7-2D	
7-658	1 13/16	2 15/16	2 3/8	2 3/4	1 3/16	1 29/32	1 13/16	1 15/16	7-3XS	7-1B / 7-2D	
7-660	1 7/8	2 15/16	2 3/8	2 3/4	1 3/16	1 29/32	1 7/16	1 15/16	7-3XS	7-1B / 7-2D	
7-662	1 15/16	2 15/16	2 3/8	2 3/4	1 3/16	1 29/32	1 3/8	1 15/16	7-3XS	7-1B / 7-2D	
7-664	2	3 1/8	2 3/8	3	1 5/32	1 31/32	1 13/32	2 1/8	7-3XS	7-1B / 7-2D	
7-666	2 1/16	3 1/8	2 3/8	3	1 5/32	1 31/32	1 1/2	2 1/8	7-3XS	7-1B / 7-2D	
7-668	2 1/8	3 1/4	2 3/8	3 1/8	1 5/32	1 31/32	1 3/8	2 1/4	7-3XS	7-1B / 7-2D	
7-670	2 3/16	3 5/16	2 3/8	3 1/4	1 7/16	2 3/32	1 5/8	2 5/16	7-3XS	7-1B / 7-2D	
7-672	2 1/4	3 9/16	2 3/8	3 1/4	1 7/16	2 3/32	1 5/8	2 5/16	7-3XS	7-1B / 7-2D	
7-674	2 5/16	3 1/2	2 3/8	3 3/8	1 1/2	2 3/32	1 3/4	2 1/2	7-3XS	7-1B / 7-2D	
7-676	2 3/8	3 1/2	2 3/8	3 1/2	1 1/2	2 11/32	1 3/4	2 1/2	7-3XS	7-1B / 7-2D	
7-678	2 7/16	3 1/2	2 3/8	3 1/2	1 1/2	2 11/32	1 3/4	2 1/2	7-3XS	7-1B / 7-2D	
7-680	2 1/2	3 5/8	2 3/8	3 1/2	1 5/8	2 19/32	2 1/2	2 5/8	7-3XS	7-1B / 7-2D	
7-682	2 9/16	3 5/8	2 3/8	3 3/8	1 5/8	2 19/32	2 3/16	2 5/8	7-3XS	7-1B / 7-2D	
7-684	2 5/8	3 5/8	2 3/8	3 3/4	1 5/8	2 3/16	1 7/8	2 5/8	7-3XS	7-1B / 7-2D	
7-686	2 11/16	3 3/4	2 3/8	3 3/4	1 13/16	2 19/32	2	2 5/8	7-3XS	7-1B / 7-2D	
7-688	2 3/4	3 7/8	2 3/8	3 3/4	1 13/16	2 21/32	2 3/4	2 7/8	7-3XS	7-1B / 7-2D	
7-690	2 13/16	4	2 3/8	4	1 13/16	2 11/16	2	3	7-3XS	7-1B / 7-2D	
7-692	2 7/8	4	2 3/8	4	1 13/16	2 11/16	2	3	7-3XS	7-1B / 7-2D	
7-694	2 15/16	4 3/16	2 3/8	4 1/8	2 1/8	2 11/16	2 15/16	3 1/8	7-3XS	7-1B / 7-2D	
7-696	3	4 3/8	2 3/8	4 1/4	2 1/16	3 1/16	2 3/8	3 3/8	7-3XS	7-1B / 7-2D	
7-6100	3 1/8	4 3/8	2 3/8	4 1/4	2 1/16	3 1/16	2 3/8	3 3/8	7-3XS	7-1B / 7-2D	
7-6104	3 1/4	4 3/8	2 3/8	4 1/2	2 1/16	3 1/32	2 3/8	3 3/8	7-3XS	7-1B / 7-2D	
7-6108	3 3/8	4 29/64	2 3/8	4 5/8	2 1/4	3 1/16	2 1/2	2 39/64	7-3XS	7-1B / 7-2D	
7-6112	3 1/2	4 3/4	2 3/8	4 3/4	2 1/4	3 11/32	2 1/2	2 5/8	7-3XS	7-1B / 7-2D	
7-6116	3 5/8	4 3/4	2 3/8	5	2 5/16	3 11/32	2 5/8	2 19/32	7-3XS	7-1B / 7-2D	
7-6118	3 11/16	4 3/4	2 3/8	5 5/16	2 7/16	3 19/32	2 3/4	2 15/16	7-3XS	7-1B / 7-2D	
7-6120	3 3/4	5 1/16	2 3/8	5 1/8	2 3/8	3 21/64	2 5/8	3 5/32	7-3XS	7-1B / 7-2D	
7-6122	3 13/16	5 3/16	2 3/8	5 3/8	2 17/32	3 3/16	2 5/8	3 23/64	7-3XS	7-1B / 7-2D	
7-6124	3 7/8	5 1/4	2 3/8	5 1/4	2 9/16	3 29/64	2 3/4	3 1/8	7-3XS	7-1B / 7-2D	
7-6126	3 15/16	5 3/16	2 3/8	5 11/32	2 9/16	3 29/64	3	3 3/16	7-3XS	7-1B / 7-2D	
7-6128	4	5 3/8	2 3/8	5 1/2	2 9/16	3 29/64	2 7/8	3 15/64	7-3XS	7-1B / 7-2D	
7-6130	4 1/16	5 3/8	2 3/8	5 1/2	2 19/32	2 19/32	3	3 33/64	7-3XS	7-1B / 7-2D	
7-6132	4 1/8	5 3/8	2 3/8	5 5/16	2 1/16	3 29/64	2 7/8	3 7/32	7-3XS	7-1B / 7-2D	
7-6134	4 3/16	5 1/2	2 3/8	6	2 33/64	3 55/64	3	3 41/64	7-3XS	7-1B / 7-2D	
7-6136	4 1/4	5 1/2	2 3/8	5 3/4	2 5/8	3 29/64	3 1/8	3 5/16	7-3XS	7-1B / 7-2D	
7-6138	4 3/8	5 1/2	2 3/8	5 13/16	2 21/32	3 29/64	3 3/8	3 3/16	7-3XS	7-1B / 7-2D	
7-6140	4 3/8	5 5/8	2 3/8	5 27/32	2 5/8	3 29/64	3 1/8	3 39/64	7-3XS	7-1B / 7-2D	
7-6142	4 7/16	5 5/8	2 3/8	6	2 43/64	3 29/64	2 5/8	3 19/32	7-3XS	7-1B / 7-2D	
7-6144	4 1/2	5 5/8	2 3/8	6	2 5/8	3 29/64	3 1/2	3 13/32	7-3XS	7-1B / 7-2D	
7-6146	4 5/16	5 5/8	3 1/4	6 1/2	2 3/4	3 1/2	3 3/8	3 17/32	8-1XS	7-1C - 7-2F	
7-6148	4 3/8	5 3/4	3 1/4	6 13/32	3 1/16	3 25/32	3 1/8	3 25/32	8-1XS	7-1C - 7-2F	
7-6152	4 3/4	5 3/4	3 1/4	6 7/8	2 57/64	3 29/64	3 1/2	3 23/32	8-1XS	7-1C - 7-2F	
7-6156	4 7/8	6	3 1/4	7	3	3 29/64	3 1/2	3 31/32	8-1XS	7-1C - 7-2F	
7-6160	5	6 1/4	3 1/4	7	3	4 3/16	3 1/2	4 7/32	8-1XS	7-1C - 7-2F	
7-6172	5 3/8	6 1/2	3 1/4	7 1/2	3 9/16	4 3/16	4 43/64	4 1/4	8-1XS	7-1C - 7-2F	
7-6184	5 3/4	6 1/2	3 1/4	8 1/4	3 9/16	4 11/32	4	4 5/32	8-1XS	7-1C - 7-2F	

TOOLS@HEIGHT
DROP PREVENTION SYSTEM

Side hole in socket permits use with Snap-on Industrial Brands Tools@Height drive tools such as ratchets, extensions and u-joints



7-654



Features

- SUPERTORQUE® lobular openings for greater turning power without deforming the fastener.
- Designed for maximum engagement on 6 point fasteners.
- Suitable for use with pneumatic and electric impact wrenches.
- Specially heat treated for impact use to provide long life, safety, and durability.

Fed. Spec: ANSI B107.2



1" DRIVE

SOCKETS AND
DRIVE TOOLS

410





1" DRIVE SHALLOW IMPACT SOCKETS, 12 POINT, SAE

Black Industrial Finish



7-1296

Product Code	Size (MM)	OAL (Inches)	Drive End Diameter (Inches)	Working End Diameter (Inches)	Broach Depth (Inches)	Bolt Clearance Depth (Inches)	Bolt Clearance Diameter (Inches)	Nose Length (Inches)	Uses RET RING® Number	Use O-Ring / Pin
7-1224	3/4"	2	2 1/8	1 3/8	1/2	3/8	3/4	3/4	7-2XS	7-1B/7-2D
7-1226	13/16"	2 1/4	2 1/8	1 3/8	5/8	1 1/8	3/4	1	7-2XS	7-1B/7-2D
7-1228	7/8"	2 1/4	2 1/8	1 1/2	5/8	1 1/8	3/4	1	7-2XS	7-1B/7-2D
7-1230	15/16"	2 1/4	2 1/8	1 5/8	3/4	1 1/8	1	1	7-2XS	7-1B/7-2D
7-1232	1"	2 1/4	2 1/8	1 5/8	3/4	1 1/8	1	1	7-2XS	7-1B/7-2D
7-1234	1 1/16"	2 1/2	2 1/8	1 3/4	3/4	1 1/8	1	1 1/4	7-2XS	7-1B/7-2D
7-1236	1 1/8"	2 1/2	2 1/8	1 3/4	3/4	1 1/8	1	1 1/4	7-2XS	7-1B/7-2D
7-1238	1 1/4"	2 1/2	2 1/8	1 7/8	3/4	1 1/8	1 1/4	1 1/4	7-2XS	7-1B/7-2D
7-1240	1 1/2"	2 1/2	2 1/8	2	3/4	1 1/8	1 1/4	1 1/4	7-2XS	7-1B/7-2D
7-1242	1 5/8"	2 3/4	2 1/8	2 1/8	3/8	1 3/8	1 1/4	-	7-2XS	7-1B/7-2D
7-1244	1 3/4"	2 3/4	2 1/8	2 1/8	7/8	1 5/8	1 1/8	-	7-2XS	7-1B/7-2D
7-1246	1 7/8"	2 3/4	2 1/8	2 1/8	1	1 5/8	1 7/16	-	7-2XS	7-1B/7-2D
7-1248	1 1/2"	2 3/4	2 1/4	2 3/8	1	1 5/8	1 7/16	-	7-2XS	7-1B/7-2D
7-1250	1 3/4"	2 3/4	2 1/4	2 3/8	1	1 5/8	1 7/16	-	7-2XS	7-1B/7-2D
7-1252	1 5/8"	2 3/4	2 1/4	2 3/8	1 1/8	1 5/8	1 9/16	-	7-2XS	7-1B/7-2D
7-1254	1 11/16"	2 3/4	2 1/4	2 5/8	1 1/8	1 5/8	1 7/16	-	7-2XS	7-1B/7-2D
7-1256	1 3/4"	3	2 1/4	2 5/8	1 1/4	1 7/8	1 7/16	-	7-2XS	7-1B/7-2D
7-1258	1 13/16"	3	2 1/4	2 5/8	1 1/8	1 7/8	1 7/16	-	7-2XS	7-1B/7-2D
7-1260	1 7/8"	3	2 1/4	2 3/4	1 1/4	1 7/8	1 7/16	-	7-2XS	7-1B/7-2D
7-1262	1 15/16"	3 1/4	2 1/4	2 7/8	1	2	1 7/8	-	7-2XS	7-1B/7-2D
7-1264	2"	3 1/4	2 1/4	2 7/8	1 1/8	2	2	-	7-2XS	7-1B/7-2D
7-1266	2 1/16"	3 1/2	2 1/4	3	1 1/8	2 1/8	2	-	7-2XS	7-1B/7-2D
7-1268	2 1/8"	3 1/2	2 1/4	3	1 1/8	2 1/8	2	-	7-2XS	7-1B/7-2D
7-1270	2 3/16"	3 1/2	2 3/8	3 1/8	1 1/2	2 1/8	2 1/8	-	7-3XS	7-1B/7-2D
7-1272	2 1/4"	3 1/2	2 3/8	3 1/4	1 1/2	2 1/8	2 1/4	-	7-3XS	7-1B/7-2D
7-1274	2 3/8"	3 3/4	2 3/8	3 1/4	1 1/2	2 3/8	2 1/4	-	7-3XS	7-1B/7-2D
7-1276	2 5/8"	3 3/4	2 3/8	3 3/8	1 1/2	2 3/8	2 1/8	-	7-3XS	7-1B/7-2D
7-1278	2 7/8"	3 3/4	2 3/8	3 1/2	1 1/2	2 1/4	2 1/8	-	7-3XS	7-1B/7-2D
7-1280	2 1/2"	3 3/4	2 3/8	3 1/2	1 1/2	2 1/4	2 1/8	-	7-3XS	7-1B/7-2D
7-1282	2 9/16"	4	2 3/8	3 3/8	1 1/2	2 1/2	2 1/8	-	7-3XS	7-1B/7-2D
7-1284	2 5/8"	4	2 3/8	3 5/8	1 1/2	2 1/2	2 1/8	-	7-3XS	7-1B/7-2D
7-1286	2 11/16"	4	2 3/8	3 3/4	1 3/4	2 1/2	2 3/8	-	7-3XS	7-1B/7-2D
7-1288	2 3/4"	4 1/4	2 3/8	3 7/8	1 3/4	2 3/4	2 3/4	-	7-3XS	7-1B/7-2D
7-1290	2 13/16"	4 1/4	2 3/8	3 7/8	1 3/4	2 11/16	2 3/4	-	7-3XS	7-1B/7-2D
7-1292	2 7/8"	4 1/4	2 3/8	4	1 3/4	2 11/16	2 3/4	-	7-3XS	7-1B/7-2D
7-1294	2 15/16"	4 1/4	2 3/8	4 1/8	1 3/4	2 5/8	3	-	7-3XS	7-1B/7-2D
7-1296	3"	4 1/4	2 3/8	4 1/8	1 3/4	2 5/8	3	-	7-3XS	7-1B/7-2D
7-1298	3 1/16"	4 1/2	2 3/8	4 1/4	2	2 7/8	3	-	7-3XS	7-1B/7-2D
7-12100	3 1/8"	4 1/2	2 3/8	4 1/4	2	2 7/8	3	-	7-3XS	7-1B/7-2D
7-12104	3 1/4"	4 1/2	2 3/8	4 1/2	2	2 13/16	3 1/4	-	7-3XS	7-1B/7-2D
7-12108	3 3/8"	5	2 3/8	4 5/8	2 1/4	3 1/4	3 1/4	-	7-3XS	7-1B/7-2D
7-12112	3 1/2"	5	2 3/8	5	2 1/4	3 1/4	3 1/2	-	7-3XS	7-1B/7-2D
7-12116	3 5/8"	5	2 3/8	4 7/8	2 1/4	3 3/16	3 5/8	-	7-3XS	7-1B/7-2D
7-12120	3 3/4"	5	2 3/8	5 1/8	2 1/4	3 3/16	3 3/4	-	7-3XS	7-1B/7-2D
7-12124	3 7/8"	5 1/2	2 3/8	5 1/4	2 1/2	3 5/8	3 7/8	-	7-3XS	7-1B/7-2D
7-12128	4"	5 1/2	2 3/8	5 3/8	2 1/2	3 5/8	4	-	7-3XS	7-1B/7-2D
7-12132	4 1/8"	5 1/2	2 3/8	5 1/2	2 1/2	3 1/2	4	-	7-3XS	7-1B/7-2D
7-12136	4 1/4"	5 1/2	2 3/8	5 3/4	2 1/2	3 1/2	4 1/4	-	7-3XS	7-1B/7-2D
7-12144	4 1/2"	5 3/4	2 3/8	6	2 1/2	3 3/4	4 1/2	-	7-3XS	7-1B/7-2D

Features

- SUPERTORQUE® lobular openings for greater turning power without deforming the fastener.
- Designed for maximum engagement on 6 and 12 point fasteners.
- Suitable for use with pneumatic and electric impact wrenches.
- Specially heat treated for impact use to provide long life, safety, and durability.

1" DRIVE DEEP IMPACT SOCKETS, 6 POINT, SAE

Black Industrial Finish

Product Code	A		B		C		D		E		F		Uses RET RING® Number	Use O-Ring / Pin
	Size (Inches)	OAL (Inches)	Drive End Diameter (Inches)	Working End Diameter (Inches)	Broach Depth (Inches)	Bolt Clearance Depth (Inches)	Bolt Clearance Diameter (Inches)	Nose Length (Inches)						
17-632	1	3	2 1/8	1 13/32	3/4	1 13/16	1 1/16	3/8	7/8	7-2XS	7-1B / 7-2D			
17-634	1 1/16	3 3/4	2 1/8	1 3/4	1 23/32	2 19/32	3/4	7/8	7-2XS	7-1B / 7-2D				
17-636	1 1/8	3 3/4	2 1/8	1 13/16	1 25/32	2 19/32	3/8	7/8	7-2XS	7-1B / 7-2D				
17-638	1 3/16	3	2 1/8	1 13/16	3/4	1 13/16	19/16	7/8	7-2XS	7-1B / 7-2D				
17-640	1 1/4	3 3/4	2 1/8	1 31/32	1 15/16	2 19/32	3/8	1	7-2XS	7-1B / 7-2D				
17-642	1 9/16	3 3/4	2 1/8	2 1/16	2 1/32	2 27/32	1	1	7-2XS	7-1B / 7-2D				
17-644	1 3/8	4	2 1/8	2 1/16	2 1/8	2 27/32	1	1	7-2XS	7-1B / 7-2D				
17-646	1 7/8	4	2 1/8	2 1/4	2 3/16	2 27/32	1	2 1/4	7-2XS	7-1B / 7-2D				
17-648	1 1/2	4	2 1/8	2 3/8	2 1/4	2 27/32	1 1/8	2 1/2	7-2XS	7-1B / 7-2D				
17-650	1 9/16	3 1/2	2 1/4	2 3/8	1	2 1 1/32	1 17/32	2 1/2	7-2XS	7-1B / 7-2D				
17-652	1 3/8	3 3/8	2 1/4	2 7/16	2 13/32	3 3/32	1 1/8	2 5/8	7-2XS	7-1B / 7-2D				
17-654	1 11/16	4 1/4	2 1/4	2 17/32	2 1/2	3 3/32	1 1/4	2 5/8	7-3XS	7-1B / 7-2D				
17-656	1 3/4	4 1/4	2 1/4	2 19/32	2 9/16	3 1/32	1 1/4	2 7/8	7-3XS	7-1B / 7-2D				
17-658	1 15/16	4 1/2	2 1/4	2 11/16	2 21/32	3 3/32	1 1/4	2 7/8	7-3XS	7-1B / 7-2D				
17-660	1 7/8	4 1/2	2 1/4	2 3/4	2 3/4	3 1/4	1 3/8	2 7/8	7-3XS	7-1B / 7-2D				
17-662	1 15/16	4 1/2	2 1/4	2 27/32	2 19/16	3 1/4	1 3/8	3 1/8	7-3XS	7-1B / 7-2D				
17-664	2	4 1/2	2 1/4	2 29/32	2 7/8	3 7/32	1 3/8	3 1/8	7-3XS	7-1B / 7-2D				
17-666	2 1/16	4 3/4	2 1/4	3	2 31/32	3 19/32	1 1/2	3 1/8	7-3XS	7-1B / 7-2D				
17-668	2 1/8	4 3/8	2 3/8	3 1/4	1 9/16	3 3/16	1 5/8	3 3/8	7-3XS	7-1B / 7-2D				
17-670	2 3/16	4 3/4	2 13/32	3 5/32	3 1/8	3 7/16	1 1/2	3 3/8	7-3XS	7-1B / 7-2D				
17-672	2 1/4	4 3/4	2 13/32	3 7/32	3 3/16	3 13/32	1 3/8	3 3/8	7-3XS	7-1B / 7-2D				
17-674	2 3/16	5	2 13/32	3 9/16	3 9/32	3 21/32	1 3/8	3 1/2	7-3XS	7-1B / 7-2D				
17-676	2 3/8	5	2 13/32	3 3/8	3 3/8	3 3/8	1 3/4	3 1/2	7-3XS	7-1B / 7-2D				
17-678	2 7/16	4 1/2	2 3/8	3 1/2	1 1/2	3 7/32	1 3/4	3 1/2	7-3XS	7-1B / 7-2D				
17-680	2 1/2	4 1/2	2 3/8	3 1/2	1 3/8	3	2 1/2	3 1/2	7-3XS	7-1B / 7-2D				
17-682	2 9/16	4 7/8	2 3/8	3 5/8	1 3/8	3 1/2	2	3 7/8	7-3XS	7-1B / 7-2D				
17-684	2 3/8	4 11/16	2 3/8	3 3/4	1 3/8	3 11/32	2	3 11/16	7-3XS	7-1B / 7-2D				
17-686	2 11/16	4 11/16	2 3/8	3 3/4	1 13/16	2 1/2	2	3 11/16	7-3XS	7-1B / 7-2D				
17-688	2 3/4	5 1/8	2 3/8	3 3/4	1 3/4	3 3/8	2	4 1/8	7-3XS	7-1B / 7-2D				
17-690	2 13/16	5 1/8	2 3/8	4	1 13/16	2 27/32	2	4 1/8	7-3XS	7-1B / 7-2D				
17-692	2 3/8	4 7/8	2 3/8	4	1 13/16	3 9/16	2	3 7/8	7-3XS	7-1B / 7-2D				
17-694	2 15/16	4 7/8	2 3/8	4 1/8	2 11/16	2 11/16	2	3 7/8	7-3XS	7-1B / 7-2D				
17-696	3	5 1/8	2 3/8	4 1/4	2 1/2	3 7/8	2 3/8	4 1/8	7-3XS	7-1B / 7-2D				
17-6100	3 1/8	5 1/8	2 3/8	4 3/8	2 1/2	3 1/2	2 3/8	4 1/8	7-3XS	7-1B / 7-2D				
17-6104	3 1/4	5 3/8	2 3/8	4 1/2	2 1/2	3 1/2	2 3/8	4 3/8	7-3XS	7-1B / 7-2D				
17-6108	3 3/8	5 1/2	2 3/8	4 5/8	2 1/4	3 5/16	2 1/2	4 1/2	7-3XS	7-1B / 7-2D				
17-6112	3 1/2	5 1/2	2 3/8	4 3/4	2 1/4	4 3/32	2 1/2	4 1/2	7-3XS	7-1B / 7-2D				
17-6116	3 5/8	5 1/2	2 3/8	5	2 9/16	4 3/32	2 5/8	4 1/2	7-3XS	7-1B / 7-2D				
17-6118	3 11/16	5 17/32	2 3/8	5 5/16	2 7/16	3 7/8	2 3/4	4 17/32	7-3XS	7-1B / 7-2D				
17-6120	3 3/4	5 9/16	2 3/8	5 1/4	2 1/4	3 19/32	2 19/16	4 9/16	7-3XS	7-1B / 7-2D				
17-6122	3 15/16	5 31/32	2 3/8	5 3/8	2 17/32	4 11/32	2 5/8	4 31/32	7-3XS	7-1B / 7-2D				
17-6124	3 7/8	5 9/16	2 3/8	5 1/4	2 9/16	3 3/8	3	4 9/16	7-3XS	7-1B / 7-2D				
17-6126	3 15/16	6 1/16	2 3/8	5 1/2	2 13/32	4 13/32	3	5 1/16	7-3XS	7-1B / 7-2D				
17-6128	4	6 1/8	2 3/8	5 1/2	2 17/32	4 3/32	2 7/8	5 1/8	7-3XS	7-1B / 7-2D				
17-6130	4 1/16	6 1/8	2 3/8	5 1/2	2 15/32	4 1/2	3	5 9/32	7-3XS	7-1B / 7-2D				
17-6132	4 1/8	6 1/8	2 3/8	5 17/32	2 17/32	4 3/32	2 7/8	5 1/8	7-3XS	7-1B / 7-2D				
17-6134	4 3/16	6 7/32	2 3/8	6	2 1/2	4 9/16	3	5 7/32	7-3XS	7-1B / 7-2D				
17-6136	4 1/4	6 3/32	2 3/8	5 3/4	2 3/8	4 9/16	3 3/8	5 9/32	7-3XS	7-1B / 7-2D				
17-6138	4 3/8	6 11/32	2 3/8	5 13/16	2 21/32	4 3/8	3 3/8	5 11/32	7-3XS	7-1B / 7-2D				
17-6140	4 3/8	6 13/32	2 3/8	5 27/32	2 3/8	4 9/16	3 3/8	5 13/32	7-3XS	7-1B / 7-2D				
17-6142	4 7/8	6 13/32	2 3/8	6	2 21/32	4 9/16	2 5/8	5 13/32	7-3XS	7-1B / 7-2D				
17-6144	4 1/2	7	2 3/8	6	2 3/4	5	3 1/8	6	7-3XS	7-1B / 7-2D				
17-6146	4 9/16	7 1/8	3 1/4	6 1/2	2 3/4	4 19/32	3 3/8	6 1/8	8-1XS	7-1C - 7-2F				
17-6148	4 3/8	7 1/8	3 1/4	6 13/16	2 19/16	4 3/32	3 1/2	6 1/8	8-1XS	7-1C - 7-2F				
17-6152	4 3/4	6 3/4	3 1/4	6 5/8	2 29/32	4 29/32	3 1/2	5 3/4	8-1XS	7-1C - 7-2F				
17-6156	4 7/8	7 1/4	3 1/4	7	3	5 5/32	3 1/2	6 1/4	8-1XS	7-1C - 7-2F				
17-6160	5	7 3/4	3 1/4	7	3	5 21/32	3 1/2	6 3/4	8-1XS	7-1C - 7-2F				
17-6172	5 3/8	8	3 1/4	7 1/2	3 9/16	5 29/32	3 21/32	7	8-1XS	7-1C - 7-2F				
17-6184	5 3/4	8	3 1/4	8 1/4	3 9/16	6 1/2	4	7	8-1XS	7-1C - 7-2F				

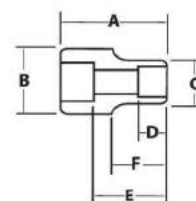
Fed. Spec: ANSI B107.2

TOOLS @ HEIGHT
DROPPREVENTION SYSTEM

Side hole in socket permits use with Snap-on Industrial Brands Tools@Height drive tools such as ratchets, extensions and u-joints.



17-660



Features

- SUPERTORQUE® lobular openings for greater turning power without deforming the fastener.
- Designed for maximum engagement on 6 point fasteners.
- Suitable for use with pneumatic and electric impact wrenches.
- Specially heat treated for impact use to provide long life, safety, and durability.





WILLIAMS

1" DRIVE SHALLOW IMPACT SOCKETS, 6 POINT, SAE

WS-7-19TB 19 Piece 1" Drive Shallow 6 Point Impact Socket Set in Tool Box Contents Include:



WS-7-19TB

Product Code	Size (Inches)	Product Code	Size (Inches)	Product Code	Size (Inches)
7-648	1 1/2	7-676	2 3/8	7-6100	3 1/8
7-652	1 5/8	7-680	2 1/2	7-6104	3 1/4
7-656	1 3/4	7-682	2 9/16	7-6112	3 1/2
7-660	1 7/8	7-684	2 5/8	7-107	7 3/8" EXT
7-664	2	7-688	2 3/4	7-140B	U-JOINT
7-668	2 1/8	7-692	2 7/8	TB-6124A	TOOL BOX
7-672	2 1/4	7-696	3		

Features

- SUPERTORQUE® lobular openings for greater turning power without deforming the fastener.
- Designed for maximum engagement on 6 point fasteners.
- Suitable for use with pneumatic and electric impact wrenches.
- Specially heat treated for impact use to provide long life, safety, and durability.



WILLIAMS



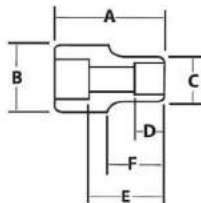
1" DRIVE SHALLOW IMPACT SOCKETS, 12 POINT, SAE

TOOLS @ HEIGHT
DROP PREVENTION SYSTEM

Side hole in socket permits use with Snap-on Industrial Brands Tools@Height drive tools such as ratchets, extensions and u-joints



39720



Black Industrial Finish

Product Code	Size (Inches)	A		B		C		D		E		F	
		Overall Length (Inches)	Drive End Diameter (Inches)	Working End Diameter (Inches)	Broach Depth (Inches)	Bolt Clearance Depth (Inches)	Bolt Clearance Diameter (Inches)	Nose Length (Inches)					
39720	5/8	2 1/4	2	1 3/16	7/16	/	/	/	/	/	/	1	/
39724	3/4	2 1/4	2	1 1/2	7/16	/	/	/	/	/	/	1	/
39726	13/16	2 1/4	2	1 1/2	7/16	/	/	/	/	/	/	1	/
39728	7/8	2 1/4	2	1 1/2	7/16	/	/	/	/	/	/	1	/
39730	15/16	2 1/4	2	1 1/2	7/16	/	/	/	/	/	/	1	/
39732	1	2 1/4	2	1 5/8	1/2	/	/	/	/	/	/	1	/
39734	1 1/16	2 1/4	2	1 3/4	1/2	/	/	/	/	/	/	1	/
39736	1 1/8	2 1/4	2	1 3/4	5/8	/	/	/	/	/	/	1	/
39738	1 3/16	2 7/16	2	1 7/8	5/8	/	/	/	/	/	/	1 1/8	/
39740	1 1/4	2 7/16	2	2	5/8	/	/	/	/	/	/	/	/
39742	1 5/16	2 7/16	2 1/16	2 1/8	3/4	/	/	/	/	/	/	1 3/16	/
39744	1 3/8	2 7/16	2 1/16	2 1/8	3/4	/	/	/	/	/	/	1 3/16	/
39746	1 7/16	2 7/16	2 1/16	2 1/8	3/4	/	/	/	/	/	/	1 3/16	/
39748	1 1/2	2 7/16	2 1/16	2 1/8	3/4	/	/	/	/	/	/	1 3/16	/
39750	1 5/16	2 7/16	2 1/16	2 1/8	7/8	/	/	/	/	/	/	1 3/16	/
39752	1 5/8	2 7/16	2 1/16	2 1/8	7/8	/	/	/	/	/	/	1 3/16	/
39754	1 11/16	2 1/2	2 1/16	2 1/8	1	/	/	/	/	/	/	1 3/16	/
39756	1 3/4	2 1/2	2 1/4	2 1/8	1	/	/	/	/	/	/	1 3/16	/
39758	1 15/16	2 1/2	2 1/4	2 1/8	1	/	/	/	/	/	/	1 3/16	/
39760	1 7/8	2 1/2	2 1/4	2 3/4	1 1/16	/	/	/	/	/	/	1 3/16	/
39762	1 15/16	2 5/8	2 1/4	2 3/4	1 1/16	/	/	/	/	/	/	1 3/16	/
39764	2	2 3/4	2 1/4	2 5/16	1 1/16	/	/	/	/	/	/	1 3/16	/
39766	2 1/16	2 3/4	2 1/4	2 5/16	1 3/16	/	/	/	/	/	/	1 3/16	/
39768	2 1/8	2 3/4	2 1/4	3 1/16	1 3/16	/	/	/	/	/	/	1 3/16	/
39770	2 3/16	2 3/4	2 1/16	3 3/16	1 3/16	/	/	/	/	/	/	1 3/16	/
39772	2 1/4	2 15/16	2 1/16	3 1/4	1 1/4	/	/	/	/	/	/	1 3/16	/
39776	2 3/8	3 1/16	2 1/16	3 1/2	1 3/8	/	/	/	/	/	/	1 3/16	/
39780	2 1/2	3 3/16	2 1/16	3 1/2	1 3/8	/	/	/	/	/	/	1 3/16	/
39782	2 5/16	3 3/16	2 1/16	3 3/8	1 3/8	/	/	/	/	/	/	1 3/16	/
39788	2 3/4	3 3/8	2 1/16	3 3/8	1 1/2	/	/	/	/	/	/	1 3/4	/
39794	2 15/16	3 3/4	3 3/8	4 1/8	1 5/8	/	/	/	/	/	/	1 1/2	/
39796	3	3 3/4	3 3/8	4 1/8	1 5/8	/	/	/	/	/	/	1 1/2	/

Features

- SUPERTORQUE® lobular openings for greater turning power without deforming the fastener.
- Designed for maximum engagement on 6 and 12 point fasteners.
- Suitable for use with pneumatic and electric impact wrenches.
- Specially heat treated for impact use to provide long life, safety, and durability.



1" DRIVE

SOCKETS AND DRIVE TOOLS