



## 1-1/2" DRIVE IMPACT EXTENSIONS AND ACCESSORIES

### Black Industrial Finish

Product Code	Description	Length (Inches)	Use RET RING®	Use O-Ring / Pin	Socket Retention
8-108	Impact Extension	8	8-1XS	7-1C / 8-2E	Through Hole and Pin
8-115	Impact Extension	15	8-1XS	7-1C / 8-2E	Through Hole and Pin
8-140B	Impact Universal Joint	6 1/8	8-1XS	7-1C / 8-2E	Through Hole and Pin
8-7	1" M x 1 1/2" F Adapter	4 1/4	8-1XS	7-1C / 8-2E	Through Hole and Pin
8-8	1 1/2" M x 2 1/2" F Adapter	6 3/8	8-4XS	9-1D / 9-2G	Through Hole and Pin

Fed. Spec: ANSI B107.2

### Features

- Specially heat treated for impact use to provide long life, safety, and durability.
- Pin and o-ring or RET RING® (sold separately) secure tools onto impact wrench for safety and convenience.
- Universal joint provides 55° range of motion.
- Suitable for use with pneumatic and electric impact wrenches.
- Drive end features pin retention hole and groove.



8-108



8-140B



8-8



8-7



## 1-1/2" SLIDING T-HANDLE

### Black Industrial Finish

Product Code	Length (Inches)	Shaft Diameter (Inches)	Socket Retention
8-20	36	2 1/2	Plunger and Spring

### Features

- Drive end slides on bar for additional flexibility.
- Ideal for turning 1-1/2" drive sockets when impact wrench is not available.



8-20



## 1-1/2" DRIVE IMPACT RETAINING PINS AND RINGS

### Black Industrial Finish

Product Code	Description	Diameter (Inches)	Length (Inches)	Application
7-1C	Impact Retaining O-Ring	3 1/4	NA	Fits All Williams 1 1/2" Drive Sockets and Accessories
8-2E	Impact Retaining Pin	1/4	2 7/8	Fits All Williams 1 1/2" Drive Sockets and Accessories
9-1D	Impact Retaining O-Ring	4 1/8	NA	
9-2G	Impact Retaining Pin	5/8	2 7/8	

### Features

- Specially heat treated for impact use to provide long life, safety, and durability.
- Suitable for use with pneumatic and electric impact wrenches.
- For 1-1/2" Drive impact tools with pin retention hole and groove.



7-1C



8-2E



## 1-1/2" DRIVE RET RING® ONE-PIECE IMPACT RETAINING RINGS WITH CRUSH GAUGE

### Black Industrial Finish

Product Code	Diameter (Inches)	Application
8-1XS	2 1/4	Fits Williams 1 1/2" Drive Tools with "B" Dimension of 3 1/4"
8-2XS	3 3/8	Fits Competitive Impact Sockets
8-3XS	3 7/8	Fits Competitive Impact Sockets
8-4XS	4 1/4	Fits Competitive Impact Sockets

### Features

- Fits all Williams 1-1/2" Drive Sockets and Accessories
- Crush Gauge on the resin pin indicates when a socket is excessively worn and should be replaced.
- Securely retains sockets and accessories to square drive of impact wrench
- For 1-1/2" drive impact tools with pin retention hole and groove
- Made of oil resistant material
- RET RING® is a trademark of FTL Enterprises, Inc.



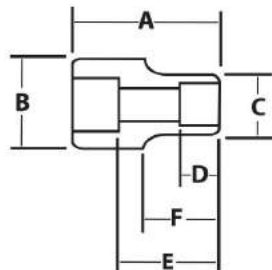
8-1XS





## 1-1/2" DRIVE SHALLOW IMPACT SOCKETS, 6 POINT, SAE

### Black Industrial Finish



Product Code	Size (Inches)	A OAL (Inches)	B Drive End Diameter (Inches)	C Working End Diameter (Inches)	D Broach Depth (Inches)	E Bolt Clearance Depth (Inches)	F Bolt Clearance Diameter (Inches)	Nose Length (Inches)	Uses RET RING® Number	Use O-Ring / Pin
8-646	1 1/16	3 1/32	3 1/4	2 7/8	5/64	1 23/64	1 1/8	1 1/32	8-1XS	7-1C / 8-2E
8-648	1 1/2	3 3/32	3 1/4	2 7/8	29/32	1 3/16	1 3/64	1 17/64	8-1XS	7-1C / 8-2E
8-652	1 5/8	3 3/16	3 1/4	2 29/32	1 1/32	1 9/16	1 5/8	1 21/64	8-1XS	7-1C / 8-2E
8-654	1 11/16	3 1/4	3 1/4	2 31/32	1 1/16	1 9/16	1 11/16	1 39/64	8-1XS	7-1C / 8-2E
8-656	1 3/4	3 3/32	3 1/4	3 1/32	1 1/32	1 21/32	1 21/32	1 5/16	8-1XS	7-1C / 8-2E
8-658	1 15/16	3 21/64	3 1/4	3 3/32	1 9/32	1 11/64	1 19/16	1 5/8	8-1XS	7-1C / 8-2E
8-660	1 7/8	3 3/8	3 1/4	3 3/32	1 7/32	1 3/4	1 7/8	1 23/32	8-1XS	7-1C / 8-2E
8-664	2	3 7/16	3 1/4	3 1/2	1 9/32	1 13/16	2	1 51/64	8-1XS	7-1C / 8-2E
8-666	2 1/16	3 1/2	3 1/4	3 1/2	1 13/32	1 55/64	2 1/16	1 55/64	8-1XS	7-1C / 8-2E
8-668	2 1/8	3 5/16	3 1/4	3 1/2	1 27/64	1 59/64	2 1/8	1 59/64	8-1XS	7-1C / 8-2E
8-670	2 3/16	3 21/32	3 1/4	3 1/2	1 7/16	2	2 3/16	2 1/64	8-1XS	7-1C / 8-2E
8-672	2 1/4	3 3/4	3 1/4	3 3/16	1 17/32	2 1/8	2 1/4	2 1/8	8-1XS	7-1C / 8-2E
8-676	2 5/8	3 7/8	3 1/4	3 25/32	1 9/16	2 1/4	2 5/8	2 17/64	8-1XS	7-1C / 8-2E
8-678	2 7/16	3 15/16	3 1/4	3 25/32	1 9/16	2 15/64	2 7/16	2 31/64	8-1XS	7-1C / 8-2E
8-680	2 1/2	4	3 1/4	3 7/8	1 19/32	2 3/8	2 3/8	2 1/64	8-1XS	7-1C / 8-2E
8-682	2 9/16	4 1/32	3 1/4	3 29/32	1 5/8	2 13/32	2 9/16	2 3/64	8-1XS	7-1C / 8-2E
8-684	2 5/8	4 3/32	3 1/4	4	1 11/16	2 15/32	2 5/8	2 3/64	8-1XS	7-1C / 8-2E
8-688	2 3/4	4 7/32	3 1/4	4 5/32	1 13/16	2 7/16	2 3/4	2 15/64	8-1XS	7-1C / 8-2E
8-692	2 7/8	4 3/16	3 1/4	4 3/16	1 7/8	2 11/16	2 7/8	2 5/64	8-1XS	7-1C / 8-2E
8-694	2 15/16	4 3/8	3 1/4	4 3/8	1 29/32	2 3/4	2 7/8	2 23/64	8-1XS	7-1C / 8-2E
8-696	3	4 7/16	3 1/4	4 7/16	1 5/16	2 27/32	2 5/8	2 13/64	8-1XS	7-1C / 8-2E
8-698	3 1/16	4 1/2	3 1/4	4 9/16	1 21/32	2 7/8	2 5/8	2 15/32	8-1XS	7-1C / 8-2E
8-6100	3 1/8	4 9/16	3 1/4	4 5/8	2	3	2 5/8	2 1/2	8-1XS	7-1C / 8-2E
8-6104	3 1/4	4 21/32	3 1/4	4 25/32	2 1/8	3	2 5/8	2 19/32	8-1XS	7-1C / 8-2E
8-6108	3 3/8	4 3/4	3 1/4	4 15/16	2 7/32	3 1/8	2 5/8	2 43/64	8-1XS	7-1C / 8-2E
8-6110	3 1/16	4 21/32	3 1/4	5	2 5/32	3 7/32	2 5/8	2 3/4	8-1XS	7-1C / 8-2E
8-6112	3 1/2	4 29/32	3 1/4	5 1/16	2 5/16	3 1/4	2 5/8	2 13/16	8-1XS	7-1C / 8-2E
8-6116	3 5/8	5 1/8	3 1/4	5 1/4	2 13/32	3 7/16	2 5/8	3	8-1XS	7-1C / 8-2E
8-6120	3 3/4	5 5/8	3 1/4	5 5/8	2 15/32	3 1/2	2 5/8	3 1/32	8-1XS	7-1C / 8-2E
8-6122	3 15/16	5 3/16	3 1/4	5 3/8	2 17/32	3 7/8	2 5/8	3 3/32	8-1XS	7-1C / 8-2E
8-6124	3 7/8	5 1/4	3 1/4	5 17/32	2 9/16	3 5/8	2 5/8	3 5/32	8-1XS	7-1C / 8-2E
8-6128	4	5 13/32	3 1/4	5 21/32	2 5/8	3 25/32	2 5/8	3 3/32	8-1XS	7-1C / 8-2E
8-6132	4 1/8	5 9/16	3 1/4	5 13/16	2 3/4	3 39/64	2 5/8	3 7/16	8-1XS	7-1C / 8-2E
8-6136	4 1/4	5 11/16	3 1/4	5 31/32	2 13/16	4 1/16	2 5/8	3 9/16	8-1XS	7-1C / 8-2E
8-6138	4 3/16	5 25/32	3 1/4	6 1/32	2 7/8	4 5/32	2 5/8	3 21/32	8-1XS	7-1C / 8-2E
8-6140	4 3/8	5 27/32	3 1/4	6 3/32	2 29/32	4 7/32	2 5/8	3 21/32	8-1XS	7-1C / 8-2E
8-6144	4 1/2	6	3 1/4	6 1/4	3 1/32	4 3/8	2 5/8	3 15/16	8-1XS	7-1C / 8-2E
8-6148	4 5/8	6 1/16	3 1/4	6 13/16	3 1/16	4 7/16	3 1/2	4 3/32	8-1XS	7-1C / 8-2E
8-6152	4 3/4	6 3/8	3 1/4	6 9/16	3 1/8	4 1/2	2 5/8	4	8-1XS	7-1C / 8-2E
8-6156	4 7/8	6 3/4	3 1/4	7	3 1/8	5 7/64	3 1/2	4 19/64	8-1XS	7-1C / 8-2E
8-6160	5	6 3/4	3 1/4	7 1/8	3 1/16	5 7/64	3 1/2	4 9/16	8-1XS	7-1C / 8-2E
8-6172	5 3/8	7	3 1/4	7 5/16	3 1/4	5 1/8	4	4 29/32	8-1XS	7-1C / 8-2E
8-6184	5 3/4	7	3 1/4	7 7/8	3 1/2	5 5/8	3 3/4	4 7/8	8-1XS	7-1C / 8-2E
8-6196	6 1/8	7 1/4	5	8 1/2	3 11/16	5 3/8	4 1/2	5 1/16	8-4XS	9-1D / 8-2E
8-6208	6 1/2	7 1/2	5	9 1/4	3 1/2	5 5/8	5	5 5/64	8-4XS	9-1D / 8-2E
8-6220	6 3/8	7 3/8	5	9 1/4	3 7/8	6	4 3/4	5 33/64	8-4XS	9-1D / 8-2E
8-6232	7 1/4	8 1/8	5	10	4 1/2	6 1/4	5 1/2	5 49/64	8-4XS	9-1D / 8-2E
8-6244	7 5/8	8 1/4	5	10 3/4	4 13/16	6 3/8	6 1/2	5 57/64	8-4XS	9-1D / 8-2E
8-6256	8	8 3/8	5	11	5 1/8	6 1/2	7	6 1/64	8-4XS	9-1D / 8-2E

Fed. Spec: ANSI B107.2

### Features

- SUPERTORQUE® lobular openings for greater turning power without deforming the fastener.
- Designed for maximum engagement on 6 point fasteners.
- Suitable for use with pneumatic and electric impact wrenches.
- Specially heat treated for impact use to provide long life, safety, and durability.



1-1/2" DRIVE

SOCKETS AND  
DRIVE TOOLS

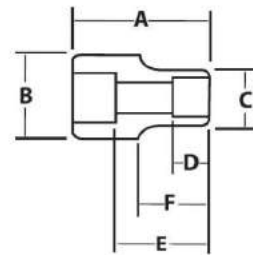
## 1-1/2" DRIVE SHALLOW IMPACT SOCKETS, 12 POINT, SAE

### Black Industrial Finish

Product Code	Size (Inches)	A Overall Length (Inches)	B Drive End Diameter (Inches)	C Working End Diameter (Inches)	D Broach Depth (Inches)	E Bolt Clearance Depth (Inches)	F Bolt Clearance Diameter (Inches)	F Nose Length (Inches)
41144	1 3/8	3 1/8	3 3/8	2 1/2	1	/	1 3/8	1 3/8
41146	1 7/16	3 1/8	3 3/8	2 1/2	1	/	1 1/4	1 3/8
41148	1 1/2	3 1/8	3 3/8	2 3/8	1	/	1 1/4	1 3/8
41150	1 9/16	3 1/8	3 3/8	2 3/8	1	/	1 3/8	1 3/8
41152	1 5/8	3 1/8	3 3/8	2 3/4	1	/	1 3/8	1 3/8
41154	1 11/16	3 1/4	3 3/8	2 3/4	1 1/16	/	1 1/2	1 1/2
41156	1 3/4	3 1/4	3 3/8	2 15/16	1 1/16	/	1 1/2	1 1/2
41158	1 15/16	3 1/4	3 3/8	2 15/16	1 1/16	/	1 5/8	1 1/2
41160	1 7/8	3 7/16	3 3/8	3 1/8	1 3/16	/	1 5/8	1 5/8
41162	1 15/16	3 7/16	3 3/8	3 1/8	1 3/16	/	1 3/4	1 5/8
41164	2	3 7/16	3 3/8	3 1/4	1 3/16	/	1 3/4	1 5/8
41166	2 1/16	3 7/16	3 3/8	3 1/4	1 3/16	/	1 7/8	1 5/8
41168	2 1/8	3 1/2	3 3/8	3 3/8	1 1/2	/	1 7/8	/
41170	2 3/16	3 1/2	3 3/8	3 3/8	1 1/2	/	1 7/8	/
41172	2 1/4	3 1/2	3 3/8	3 3/8	1 1/2	/	2 1/16	1 3/4
41174	2 5/16	3 1/2	3 3/8	3 3/8	1 1/2	/	2 1/16	1 3/4
41176	2 3/8	3 1/2	3 3/8	3 3/8	1 1/2	/	2 1/16	1 3/4
41178	2 7/16	3 3/4	3 3/8	3 7/8	1 5/8	/	3/4	1 3/4
41180	2 1/2	3 3/4	3 3/8	3 7/8	1 5/8	/	3/4	1 3/4
41182	2 9/16	3 3/4	3 3/8	3 7/8	1 5/8	/	3/4	1 3/4
41184	2 5/8	3 3/4	3 3/8	4 3/16	1 5/8	/	2 7/16	1 3/4
41186	2 11/16	3 3/4	3 3/8	4 3/16	1 5/8	/	2 7/16	1 3/4
41188	2 3/4	3 3/4	3 3/8	4 3/16	1 5/8	/	2 1/2	1 3/4
41190	2 13/16	4 1/16	3 3/8	4 1/4	1 3/4	/	2 1/2	1 3/4
41192	2 7/8	4 1/16	3 3/8	4 1/4	1 3/4	/	2 5/8	1 3/4
41194	2 15/16	4 1/8	3 3/8	4 1/4	1 3/4	/	2 5/8	1 3/4
41196	3	4 1/4	3 3/8	4 5/8	2	/	2 3/4	1 3/4
41200	3 1/8	4 1/4	3 3/8	4 5/8	2	/	2 3/4	1 3/4
41204	3 1/4	4 1/4	3 3/8	4 15/16	2	/	3	1 3/4
41208	3 3/8	4 1/4	3 3/8	4 15/16	2	/	3	1 3/4
41212	3 1/2	4 5/8	3 3/8	5	2 3/16	/	3 1/4	1 3/4
41220	3 3/4	4 5/8	3 3/8	5 1/4	2 3/16	/	3 1/2	2
41224	3 7/8	4 15/16	3 3/8	5 7/16	2 1/4	/	3 3/8	2
41226	3 15/16	4 15/16	3 3/8	5 7/16	2 1/4	/	3 3/8	2
41228	4	4 15/16	3 3/8	5 7/16	2 1/4	/	3 3/4	2



41144



### Features

- SUPERTORQUE® lobular openings for greater turning power without deforming the fastener.
- Designed for maximum engagement on 6 and 12 point fasteners.
- Suitable for use with pneumatic and electric impact wrenches.
- Specially heat treated for impact use to provide long life, safety, and durability.