

SPECIALTY



Special Applications Require Special Tools

Sioux Tools has a superb selection of specialty tools designed for very specific applications, and as always, we manufacture the finest tools in the industry.

ROUTERS

Sioux offers a selection of routers and laminate trimmers in 1.0 hp (0.75 kw) or 1.5 hp (1.1 kw) configurations. They feature lockoff lever, twist or finger throttles and come with a selection of different bases.

TAPPERS

Choose from pistol grip or inline configurations. The pistol grip offers chuck capacity from No. 10 thru 1/2" size.

METAL WORKING TOOLS NIBBLER AND SHEAR

Our 1.0 hp (0.75 kw) nibbler and shear has the power for use on cold rolled sheet steel up to 18 gauge.



POWER TOOLS

SPECIALTY

SHEARS

This versatile tool cuts 18 gauge steel and plastics up to 3/32" thick. It also makes straight or curve cuts clean and smooth.

AIRCRAFT SPECIALTY TOOLS

Sioux Tools offers several specialized tools for the aircraft industry such as Skin Clamp Runners, which are available in pistol grip or our exclusive Z-handle design. Rivet Shavers come in both pistol grip and inline configurations, with speeds up to 21,000 rpm.

CLINCH NUT TOOLS

As manufacturing trends continue to evolve manufacturers are finding more and more uses for thin wall assembly applications. Sioux Tools has a selection of Clinch Nut tools that handle these unique fasteners with precision and ease, and our Rapid Reverse feature makes them the best Clinch Nut tool on the market today.

AIR POWERED SAWS

Sioux Tools offers an outstanding and powerful Reciprocating Saw, offering variable speed control for precise cutting action in any application.





SRT10S25N



SRT10S25B



SRT10S25BB



SRT10S25LT

PERFORMANCE:

Power: 1 hp (0.75 kW)
Speed: 18,000 rpm – 25,000 rpm
Collet Size: 1/4" (6 mm)

FEATURES:

Lockoff Lever Throttle
Front Exhaust
Interchangeable Base
Built-in Speed Control

1 HP (0.75 KW) ROUTERS



Model Number	Collet Size	Free Speed		Weight		Height		Maximum Air Consumption		Sound Level
		rpm	lb	kg	in	mm	cfm	l/s	dB(A)	
Template Nose										
SRT10S18N	1/4"	18,000	2.1	0.95	9	230	30	14	14	78
SRT10S18M6N	6 mm	18,000	2.1	0.95	9	230	30	14	14	78
SRT10S25N	1/4"	25,000	2.1	0.95	9	230	30	14	14	78
SRT10S25M6N	6 mm	25,000	2.1	0.95	9	230	30	14	14	78
3" Base										
SRT10S18B	1/4"	18,000	2.1	0.95	9	230	30	14	14	78
SRT10S18M6B	6 mm	18,000	2.1	0.95	9	230	30	14	14	78
SRT10S18BB	1/4"	18,000	2.6	1.15	8.3	210	30	14	14	78
SRT10S25B	1/4"	25,000	2.1	0.95	9	230	30	14	14	78
SRT10S25M6B	6 mm	25,000	2.1	0.95	9	230	30	14	14	78
SRT10S25BB	1/4"	25,000	2.6	1.15	8.3	210	30	14	14	78
Laminate Trimmer										
SRT10S18LT	1/4"	18,000	2.9	1.30	9.3	235	30	14	14	78
SRT10S25LT	1/4"	25,000	2.9	1.30	9.3	235	30	14	14	78

Template guides must be ordered separately

General: Air Inlet Size: 1/4" NPT • Recommended Hose Size: 3/8" (10 mm) • Performance rated @ 90 psig (6.2 bar) air pressure

Standard Equipment: Parts List • Safety and Instruction Manual • Base/Head Assembly, Collet, Collet Wrenches

Accessories: Router Accessories, see pages 726-727

PERFORMANCE:

Power: 1.5 hp (1.2 kW)
Speed: 20,000 rpm
Collet Size: 1/4" – 1/2"

FEATURES:

Twist and Finger Throttle
4" (102 mm) or 6" (152 mm)
Diameter Base
Side Exhaust



1981F



1980



RT1983

1.5 HP (1.2 KW) ROUTERS

Model Number	Collet Size	Free Speed		Weight		Height		Base Diameter		Maximum Air Consumption		Sound Level
		rpm	lb	kg	in	mm	in	mm	cfm	l/s	dB(A)	
Finger Throttle												
1981F	1/2"	20,000	6	2.7	9.8	248	4	102	38	18	18	85
Twist Throttle												
1980A	1/4"	20,000	4.5	2	7.6	193	4	102	38	18	18	85
1980	3/8"	20,000	4.5	2	7.6	193	4	102	38	18	18	85
RT1981	1/2"	20,000	4.5	2	7.6	193	4	102	38	18	18	85
1982A	1/4"	20,000	7.5	3.4	8.3	211	6	152	38	18	18	85
RT1982	3/8"	20,000	7.5	3.4	8.3	211	6	152	38	18	18	85
RT1983	1/2"	20,000	4.8	2.2	8.3	211	6	152	38	18	18	85

General: Air Inlet Size: 1/4" NPT • Recommended Hose Size: 3/8" (10 mm) • Performance rated @ 90 psig (6.2 bar) air pressure

Standard Equipment: Parts List • Safety and Instruction Manual • Base & Collet Wrenches

Accessories: Router Accessories, see pages 726-727



SPECIALTY

The Fastest Way Out of a Clinch



Sioux Tool's new rapid reverse Clinch Nut Tools are meeting the demand of today's manufacturing marketplace with versatility and simplicity. Clinch nuts, also known as captive nuts, provide a reliable means of securing assembly components in thin wall applications. These unique fasteners are inserted into predrilled holes in thin materials such as sheet metal, and with the aid of a Sioux Clinch Nut Tool, compress and expand to clamp the material. This process creates a strong, secure base with a male or female thread for assembling additional components.

INSTALLING CLINCH NUT FASTENERS

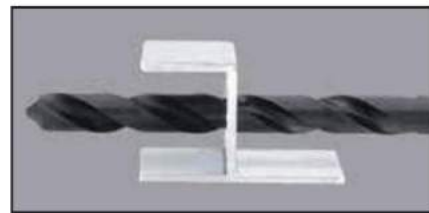
When installing clinch nut fasteners, the key to achieving high productivity with accurate, repeatable results is matching the right tool and fastener to your application. The right combination of rundown speed and stall torque in conjunction with a quick reverse method for disengaging the tool, will provide the best results. The Sioux SCN series tools offer higher torque in a wide range of speeds so you can match the right tool to your application. Our powerful tools allow you to use faster rundown speeds while maintaining high torque output, plus our exclusive Rapid Reverse feature makes short work of direction changes ensuring fast disengagement from the fastener.

REDUCING PHYSICAL LOAD

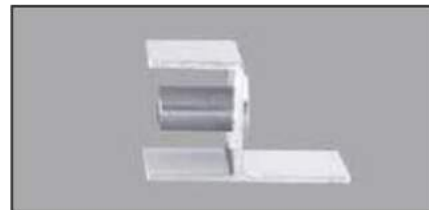
The ergonomic pistol housing with comfort rubber grip ensures operator comfort while maintaining superb balance and control. The powerful, precision motor ensures fast and consistent installation of fasteners in a variety of applications, and the wide selection of speeds and threads in both English and metric sizes make Sioux Tools your choice for all your clinch nut applications.

CLINCH NUT INSTALLATION PROCEDURE

Step 1 - Pre-drill hole for fastener.



Step 2 - Insert fastener.



Step 3 - Thread tool into fastener.



**Step 4 - Run tool to collapse fastener.
Reverse tool to release.**

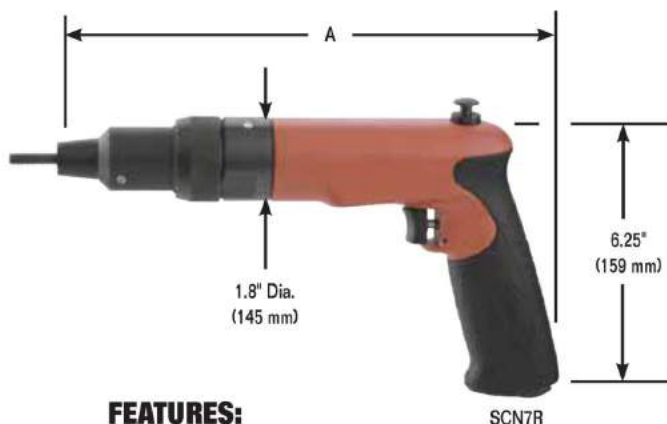


Step 5 - Assemble.



POWER TOOLS

SPECIALTY



SCN7R

PERFORMANCE:

Torque: 60 in. lb (6.5 Nm) – 400 in. lb (45 Nm)
Speed: 300 rpm – 2500 rpm

FEATURES:

Reversible
Pistol Grip

POWER TOOLS

SPECIALTY: CLINCH NUT TOOLS

1 HP (0.75 KW) CLINCH NUT TOOLS



Model Number	Free Speed		Maximum Torque		Weight		"A" Dimension		Side To Center		Maximum Air Consumption		Sound Level
	rpm		in lb	Nm	lb	kg	in	mm	in	mm	cfm	l/s	dB(A)
Pistol Grip – Rapid Reverse – Power Units Specifications													
SCN3R	300		400	45.2	3.2	1.5	11	279	0.9	20	30	14	80
SCN5R	500		325	36.7	3.2	1.5	11	279	0.9	20	30	14	80
SCN7R	700		220	24.8	3.2	1.5	11	279	0.9	20	30	14	80
SCN12R	1200		145	16.4	3.2	1.5	11	279	0.9	20	30	14	80
SCN20R	2000		80	9	2.8	1.3	10	254	0.9	20	30	14	80
SCN25R	2500		60	6.5	2.8	1.3	10	254	0.9	20	30	14	80

Power units can be ordered separately using part number above. For ordering complete tools select the appropriate power unit from the chart above and head assembly from the chart below and combine their part numbers as shown in the following example: SCN3R420.

General: Air Inlet Size: 1/4" NPT • Recommended Hose Size: 3/8" (10 mm) • Performance rated @ 90 psig (6.2 bar) air pressure

Standard Equipment: Parts List • Safety and Instruction Manual • Comfort Grip

Accessories: Clinch Nut Accessories, see pages 726-727



CLINCH NUT (FEMALE)

Thread Size	Order Number Suffix	
	Serrated Nose	Smooth Nose
#4-40	440	440S
M3 x 0.5	M305	M305S
#6-32	632	632S
#8-32	832	832S
M4 x 0.7	M407	M407S
#10-24	1024	1024S
#10-32	1032	1032S
M5 x 0.8	M508	M508S
1/4-20	420	420S
M6 x 1.0	M610	M610S
5/16-18	518	518S
M8 x 1.25	M8125	M8125S
3/8-16	616	616S
M10 x 1.5	M1015	M1015S



CLINCH STUD (MALE)

Thread Size	Order Number Suffix	
	Serrated Nose	Smooth Nose
#4-40	440F	440SF
M3 x 0.5	M305F	M305SF
#6-32	632F	632SF
#8-32	832F	832SF
M4 x 0.7	M407F	M407SF
#10-24	1024F	1024SF
#10-32	1032F	1032SF
M5 x 0.8	M508F	M508SF
1/4-20	420F	420SF
M6 x 1.0	M610F	M610SF
5/16-18	518F	518SF
M8 x 1.25	M8125F	M8125SF
3/8-16	616F	616SF
M10 x 1.5	M1015F	M1015SF

Head assemblies can be ordered separately by adding the prefix SCN to the above part number (example SCN-420).



Safety Precaution: Read and follow all safety and operation instructions.
Warning: Face & eye protection must be worn while operating power tools, per ANSI B186.1.



PERFORMANCE:

Power: 1 hp (0.75 kW)
 Torque: 145 in. lb (16 Nm) –
 400 in. lb (45 Nm)
 Speed: 300 rpm – 1200 rpm

FEATURES:

Pistol Grip Handle
 Rapid Reverse

CAPACITY:

1/4" in Steel
 5/16" in Aluminum



STP10P3C20

STP10S3B12



TAPPERS

Model Number	Chuck Capacity		Maximum Torque		Free Speed rpm	Weight		Length		Air Consumption		Sound Level dB(A)
	in	mm	in lb	Nm		lb	kg	in	mm	cfm	l/s	
1 hp (0.75 kW) – Pistol Grip – Trigger Start												
STP10P3C20	#10-3/16	5-8	400	45	300	2.9	1.3	7.3	185	30	14	80
STP10P3C32	1/4-1/2	6-13	400	45	300	2.9	1.3	7.3	185	30	14	80
1 hp (0.75 kW) – Inline – B12 Taper Spindle												
STP10S12B12			145	16	1200	2.5	1.2	9.5	240	30	14	78
STP10S7B12			220	25	700	2.5	1.2	9.5	240	30	14	78
STP10S5B12			325	37	500	2.5	1.2	9.5	240	30	14	78
STP10S3B12			400	45	300	2.5	1.2	9.5	240	30	14	78

General: Air Inlet Size: 1/4" NPT • Recommended Hose Size: 3/8" (10 mm) • Performance rated @ 90 psig (6.2 bar) air pressure

Standard Equipment: Parts List • Safety and Instruction Manual • Comfort Grip • Tapping Chuck (model STP10P3C series)

Accessories: Tapper Accessories, see pages 726-727

PERFORMANCE:

Power: 0.6 hp (0.45 kW) - 1 hp (0.75 kW)
 Speed: 21,000 rpm

FEATURES:

Pistol Grip & Inline



SRS6P21-8

SRS10P21-8

SRS10S21-8



RIVET SHAVERS

Model Number	Cutter Diameter		Free Speed rpm	Weight		Length		Side to Center		Maximum Air Consumption		Sound Level dB(A)
	in	mm		lb	kg	in	mm	in	mm	cfm	l/s	
0.6 hp (0.45 kW) – Pistol Grip – 1/4"-28 Internal Thread												
SRS6P21-5	3/16	8	21,000	2	0.9	6.5	165	0.8	21	25	12	84
SRS6P21-6	3/8	10	21,000	2	0.9	6.5	165	0.8	21	25	12	84
SRS6P21-7	7/16	11	21,000	2	0.9	6.5	165	0.8	21	25	12	84
SRS6P21-8	1/2	13	21,000	2	0.9	6.5	165	0.8	21	25	12	84
SRS6P21-9	9/16	14	21,000	2	0.9	6.5	165	0.8	21	25	12	84
SRS6P21-10	5/8	16	21,000	2	0.9	6.5	165	0.8	21	25	12	84
SRS6P21-9W	9/16	14	21,000	2	0.9	6.5	165	0.8	21	25	12	84
1 hp (0.75 kW) – Pistol Grip – 1/4"-28 Internal Thread												
SRS10P21-5	3/16	8	21,000	2.7	1.2	8	205	0.9	23	25	12	80
SRS10P21-6	3/8	10	21,000	2.7	1.2	8	205	0.9	23	25	12	80
SRS10P21-7	7/16	11	21,000	2.7	1.2	8	205	0.9	23	25	12	80
SRS10P21-8	1/2	13	21,000	2.7	1.2	8	205	0.9	23	25	12	80
SRS10P21-9	9/16	14	21,000	2.7	1.2	8	205	0.9	23	25	12	80
SRS10P21-10	5/8	16	21,000	2.7	1.2	8	205	0.9	23	25	12	80
1 hp (0.75 kW) – Inline – 1/4"-28 Internal Thread												
SRS10S21-8	1/2	13	21,000	2.5	1.1	10	255	0.9	23	30	14	78

General: Air Inlet Size: 1/4" NPT • Recommended Hose Size: 3/8" (10 mm) • Performance rated @ 90 psig (6.2 bar) air pressure

Standard Equipment: Parts List • Safety and Instruction Manual • Skirt • Comfort Grip (Pistol Grip models)

Accessories: Rivet Shaver Accessories, see pages 726-727



PERFORMANCE:

Speed: 2200 rpm - 2500 rpm

FEATURES:

Pistol Grip and Z-Handle
1/2-12 Point Internal, 9/16-6 Point External Hex

SKIN CLAMP RUNNERS

Model Number	Free Speed		Weight		Length		Side to Center		Air Consumption Free Speed		Sound Level dB(A)
	rpm		lb	kg	in	mm	in	mm	cfm	l/s	
Z-Handle 2S2300SR	2200		2.6	1.2	5.7	145	0.9	23	16	8	75
Pistol Grip SSR6P25	2500		2.7	1.2	9.2	234	0.9	23	30	14	78

General: Air Inlet Size: 1/4" NPT • Recommended Hose Size: 3/8" (10 mm) • Performance rated @ 90 psig (6.2 bar) air pressure
Standard Equipment: Parts List • Safety and Instruction Manual • Comfort Grip (Pistol Grip models)
Accessories: Skin Clamp Runner Accessories, see pages 726-727

PERFORMANCE:

Power: 1 hp (0.75 kW)
Strokes per Minute: 1800
Stroke Length: 0.6" (15 mm)

FEATURES:

Lockoff Trigger Start
Variable Speed
Swivel Air Inlet



RECIPROCATING SAW

Model Number	Stroke Length		Strokes per Minute	Power		Weight		Length		Air Consumption		Sound Level dB(A)
	in	mm		hp	kW	lb	kg	in	mm	cfm	l/s	
1300	0.6	15	1800	1	0.7	7.8	3.5	17.2	437	35	17	86

General: Air Inlet Size: 1/4" NPT • Recommended Hose Size: 3/8" (10 mm) • Performance rated @ 90 psig (6.2 bar) air pressure
Standard Equipment: Parts List • Safety and Instruction Manual • Swivel Air Inlet • 2 Blades • Protective Boot
Accessories: Reciprocating Saw Accessories, see pages 726-727

PERFORMANCE:

Free Speed: 10,000 rpm
Stroke Length: 0.375" (10 mm)
Cuts up to 1/8" (3 mm) mild steel

FEATURES:

Lock-off lever start
Low vibration
360° Adjustable Exhaust Deflector
Dual chuck accepts: 0.035" standard air saw blades AND 6" long reciprocating saw blades



RECIPROCATING SAW

Model Number	Stroke Length		Strokes per Minute	Weight		Length		Air Consumption		Sound Level dB(A)
	in	mm		lb	kg	in	mm	cfm	l/s	
RS10K	0.375	10	10,000	1.53	0.69	9.4	238.76	1	0.5	87.1

General: Air Inlet Size: 1/4" NPT • Recommended Hose Size: 3/8" (10 mm) • Performance rated @ 90 psig (6.2 bar) air pressure
Standard Equipment: Parts List • Safety and Instruction Manual • Swivel Air Inlet • 2 Blades • Protective Boot
Accessories: Reciprocating Saw Accessories, see pages 726-727

POWER TOOLS
SPECIALTY: RUNNERS/RECIPROCATING SAWS





PERFORMANCE:

Power: 1 hp (0.75 kW)
Free Speed: 18,000 rpm – 25,000 rpm

FEATURES:

Inline
Lockoff Lever Start
Front or Rear Exhaust



SCO10S253F



CUTOFF TOOL

Model Number	Blade Diameter		Depth of Cut		Free Speed rpm	Weight		Length		Air Consumption		Sound Level dB(A)	Exhaust
	in	mm	in	mm		lb	kg	in	mm	cfm	l/s		
1 hp (0.75 kW) – Cutoff Tool – Inline – Lockoff lever Start													
SCO10S184F	4	100	1.1	28	18,000	2	0.9	8.3	210	30	14	89.1	Front
SCO10S184R	4	100	1.1	28	18,000	2	0.9	8.3	210	30	14	87.8	Rear
SCO10S204F	4	100	1.1	28	20,000	2	0.9	8.3	210	30	14	90.3	Front
SCO10S204R	4	100	1.1	28	20,000	2	0.9	8.3	210	30	14	91.6	Rear
SCO10S253F	3	76	1	25	25,000	2	0.9	8.3	210	30	14	89	Front
SCO10S253R	3	76	1	25	25,000	2	0.9	8.3	210	30	14	87.8	Rear

General: Air Inlet Size: 1/4" NPT • Recommended Hose Size: 3/8" (10 mm) • Performance rated @ 90 psig (6.2 bar) air pressure

Standard Equipment: Parts List • Safety and Instruction Manual • 1 Blade • Spindle Wrenches & Guard

Accessories: Panel and Cutoff Saw Accessories, see pages 726-727

FEATURES:

Heavy duty spiral bevel gearing for durability and smooth operation

4 position indexable angle head
360 degree rotatable guard
Grease zerk in gear case



SCO10A106



ANGLE CUTOFF TOOL

Model Number	Blade Diameter		Depth of Cut		Free Speed rpm	Weight		Length		Air Consumption		Sound Level dB(A)	Spindle Thread	Exhaust
	in	mm	in	mm		lb	kg	in	mm	cfm	l/s			
SCO7A184	4	100	1.2	30	18,000	2.5	1.4	6.4	163	25	12	TBD	3/8"-24	Front
SCO10A106	6	150	2	51	10,000	3.7	1.7	8.75	220	35	16.5	91.2	3/8"-11	Rear
SCO10A125	5	125	1.5	38	12,000	3.5	1.6	8.75	220	35	16.5	87.3	3/8"-11	Rear
SCO10A184	4	100	1.2	30	18,000	2.5	1.4	7.75	195	35	16.5	TBD	3/8"-24	Rear
SCO10AXL124	4	100	1	25	12,000	3.6	1.6	11.25	285	35	17	83.7	3/8"-24	Rear

General: Air Inlet Size: 1/4" NPT • Recommended Hose Size: 3/8" (10 mm) • Performance rated @ 90 psig (6.2 bar) air pressure

Standard Equipment: Parts List • Safety and Instruction Manual • 1 Blade • Spindle Wrenches & Guard

Accessories: Angle Cutoff Tool Accessories, see page 726-727



SCOAX124



SCOAX124G



ANGLE METAL BODY EXTENDED CUTOFF TOOL

Model Number	Blade Diameter		Depth of Cut		Free Speed rpm	Weight		Length		Air Consumption		Sound Level dB(A)	Spindle Thread	Exhaust
	in	mm	in	mm		lb	kg	in	mm	cfm	l/s			
1 hp (0.75 kW) – Lever Throttle – Aluminum Housing														
SCOAX124	4	100	1	25	12,000	3.9	1.8	10.5	267	35	16.5	88	3/8" - 24	Front
1 hp (0.75 kW) – Lever Throttle – Aluminum Housing with Grip														
SCOAX124G	4	100	1	25	12,000	3.6	1.6	10.5	267	35	16.5	88	3/8" - 24	Front
1 hp (0.75 kW) – Lever Throttle – Steel Housing														
SCOS1AX124	4	100	1	25	12,000	4.5	2	10.5	267	35	16.5	89	3/8" - 24	Front
1 hp (0.75 kW) – Lever Throttle – Steel Housing with Grip														
SCOS1AX124G	4	100	1	25	12,000	4.1	1.9	10.5	267	35	16.5	87	3/8" - 24	Front

General: Air Inlet Size: 1/4" NPT • Recommended Hose Size: 3/8" (10 mm) • Performance rated @ 90 psig (6.2 bar) air pressure

Standard Equipment: Parts List • Safety and Instruction Manual • 1 Blade • Spindle Wrenches & Guard

Accessories: Angle Cutoff Tool Accessories, see page 726-727

POWER TOOLS
SPECIALTY: CUTOFF TOOLS



SNH10S18

PERFORMANCE:

Power: 1 hp (0.75 kW)
Capacity: 18 Gauge Cold Rolled Steel

NIBBLER

Model Number	Capacity (Cold Rolled Steel)	Power		Weight		Length		Side to Center		Maximum Air Consumption		Sound Level
	in	hp	kW	lb	kg	in	mm	in	mm	cfm	l/s	dB(A)
Nibbler												
SNH10S18 ¹	18 Ga	1	0.75	2.65	1.2	8.5	215	0.9	32	30	14	82.4

¹ Not CE Certified

General: Air Inlet Size: 1/4" NPT • Recommended Hose Size: 3/8" (10 mm) • Performance rated @ 90 psig (6.2 bar) air pressure

Standard Equipment: Parts List • Safety and Instruction Manual

Accessories: Nibbler Accessories, see pages 726-727

POWER TOOLS

SPECIALTY: NIBBLER/SHEARS

PERFORMANCE:

Power: 1 hp (0.75 kW)
Capacity: 18 Gauge Cold Rolled Steel



SSH10S18



SSH10P18

SHEARS

Model Number	Capacity (Cold Rolled Steel)	Power		Weight		Length		Side to Center		Maximum Air Consumption		Sound Level
	in	hp	kW	lb	kg	in	mm	in	mm	cfm	l/s	dB(A)
Shears												
SSH10S18 ¹	18 Ga	1	0.75	2.75	1.25	11	280	0.9	32	30	14	79.4
SSH10P18	18 Ga	1	0.75	2.9	1.3	10	255	0.9	22	30	14	85.1

¹ Not CE Certified

General: Air Inlet Size: 1/4" NPT • Recommended Hose Size: 3/8" (10 mm) • Performance rated @ 90 psig (6.2 bar) air pressure

Standard Equipment: Parts List • Safety and Instruction Manual • Comfort Grip (SSH10P18)

Accessories: Shears Accessories, see pages 726-727



SPECIALTY

Compression Riveters



PRINCIPLES OF OPERATION

Air powered compression riveters deliver a squeezing action, which drives the rivet by "flowing" the rivet metal with compressed forces. Squeezing action is obtained by coupling an air cylinder and piston to a wedge or cam, thus multiplying the original force to extreme ratios. High compressive forces are obtained from a relatively compact unit having small diameter cylinders and using very little compressed air.

The advantage of squeeze riveting is simple sounds of air exhaust and forward piston movement developing tremendous pressures being exerted at the work point.

Optimum control may be obtained in compression riveting. The rivet head is formed by a steady, uniform squeeze action. The set plunger and dolly are an integral part of the squeezer itself.

Length of the return stroke may be adjusted that the plunger itself does not have to travel its full length.

Consistently applied pressure makes for a better appearance of the finished product as well as giving the ultimate in structural efficiency.

CLASSIFICATION OF SQUEEZERS:

Alligator: The squeezing action of the jaws are similar to the movement of an Alligators jaws.

'C' Type: The rivet is squeezed between the two ends of the 'C'.

Type of Rivet:

- Rivet material.
- Rivet body diameter.
- Rivet length before and after compression.
- Force required to compress rivet.

Riveter Selection Guide:

- What material is the rivet made from?
- What size is the rivet?
- What is the form of the head?
- What components are being assembled?

- Are there any clearance problems?
- Is Alligator or 'C' type yoke required?
- How is the application being done now?
- Are there any special considerations?

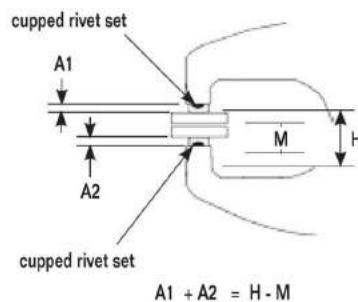
COMPRESSION RIVETERS

For maximum power the combined length of the two rivet sets must be of the correct length.

Determine the correct lengths as follows:

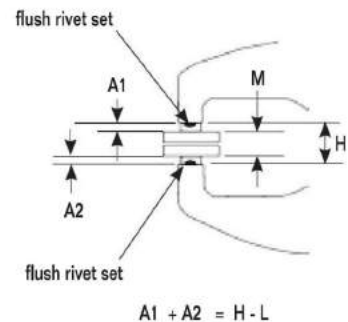
1) When two cupped rivet sets are used:

The length of the body dimensions of the two rivet sets (A1, A2) should equal the closed height dimension of the yoke (H) minus the total thickness of material being riveted together.



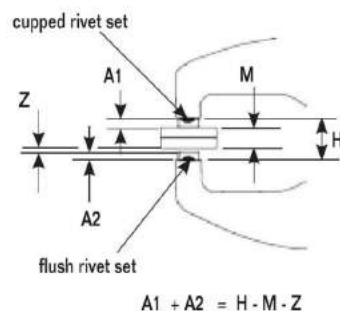
3) When two flush sets are used:

The length of the body dimensions of the two rivet sets (A1, A2) should equal the closed height dimension of the yoke (H) minus the overall length of the rivet (M) after it is compressed.

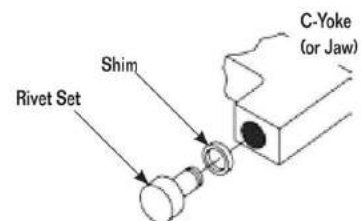


2) When one cupped set and one flush set are used:

The length of the body dimensions of the two rivet sets (A1, A2) should equal the closed height dimension of the yoke H minus the total thickness of material being riveted (M) and the height of the finished rivet head (Z) compressed by the flush set (A).



If necessary, select rivet sets a little short and shim to the correct length using spacer shims.





FEATURES:

Single, Tandem, and Triple Cylinder Options
 Riveting Capacity:
 1/8" (3 mm) (Single Cylinder)
 3/16" (5 mm) (Tandem Cylinder)
 1/4" (6 mm) (Triple Cylinder)
 Safety Throttle



SZEAE5030



SZEAE7030



SZEAE9030

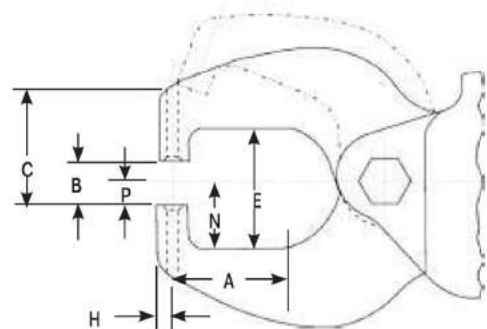
COMPRESSION RIVETERS

Model Number	Rivet Set Shank Diameter		Cap Cold Rivet Diameter						Standard Alligator Yoke Dimension				Max Force at 90 psi		Moving Jaw				Net Weight w/Yoke		Overall Length	
			Steel		Alum		Reach		Closed Ht		Max Travel				Stroke at Max Force							
			in	mm	in	mm	in	mm	in	mm	in	mm			in	mm	lb	kg				
CR-1 - Single Cylinder																						
SZEAE5000	NA	NA	3/32	2	1/8	3	NA	NA	NA	NA	3000	13.4	5/8	16	final 1/16	2	2 1/4	1	7 1/16	195		
SZEAE5015	3/16	5	3/32	2	1/8	3	1 1/2	38	7/8	22	3000	13.4	5/8	16	final 1/16	2	3.75	1.7	9 3/16	233		
SZEAE5022	3/16	5	3/32	2	3/32	2	2 1/4	57	7/8	22	2200	9.8	7/8	22	final 3/32	2	4.25	1.9	10 1/8	257		
SZEAE5030	3/16	5	3/32	2	3/32	2	3	76	7/8	22	1800	8	1 1/4	32	final 1/8	3	4.75	2.2	10 7/8	276		
CR-1 - Tandem Cylinder																						
SZEAE7000	NA	NA	3/32	4	3/16	5	NA	NA	NA	NA	6000	26.7	5/8	16	final 1/16	2	4	1.8	10 1/2	267		
SZEAE7015	3/16	5	3/32	4	3/16	5	1 1/2	38	7/8	22	6000	26.7	5/8	16	final 1/16	2	5.5	2.5	12	305		
SZEAE7022	3/16	5	1/8	3	3/32	4	2 1/4	57	7/8	22	4300	19.1	7/8	22	final 3/32	2	6	2.7	13	330		
SZEAE7030	3/16	5	3/32	2	1/8	3	3	76	7/8	22	3400	15.1	1 1/4	32	final 1/8	3	6.25	2.8	13.75	349		
CR-1 - Triple Cylinder																						
SZEAE9000	NA	NA	3/16	5	1/4	6	NA	NA	NA	NA	9000	40.1	5/8	16	final 1/16	2	5.5	2.5	14.5	368		
SZEAE9015	3/16	5	3/16	5	1/4	6	1 1/2	38	7/8	22	9000	40.1	5/8	16	final 1/16	2	7	3.2	16	406		
SZEAE9022	3/16	5	3/32	4	3/16	5	2 1/4	57	7/8	22	7000	31.2	7/8	22	final 3/32	2	7.5	93.4	16.75	426		
SZEAE9030	3/16	5	3/32	4	3/16	5	3	76	7/8	22	5200	23.1	1 1/4	32	final 1/8	3	8	3.6	17.5	445		

General: Air Inlet Size: 1/4" NPT • Recommended Hose Size: 3/8" (10 mm) • Performance rated @ 90 psig (6.2 bar) air pressure
 Standard Equipment: Parts List • Safety and Instruction Manual • Safety throttle action

ALLIGATOR YOKE NOMENCLATURE

- A** Reach
- B** Closed Height
- C** Total
- E** Gap
- H** Lowest Offset
- N** Depth from centerline to Stationary Jaw Gap
- P** Depth from centerline to Stationary Jaw set hole surface



A		B		C		E		H		N		P	
in	mm	in	mm	in	mm	in	mm	in	mm	in	mm	in	mm
1 1/2	38	7/8	22	1 1/2	38	1 5/8	41	7/32	6	1.0	1	5/8	16
2 1/4	57	7/8	22	1 7/8	48	2 1/8	54	7/32	6	1 1/4	32	3/8	16
3	76	7/8	22	2 1/4	54	2 1/8	54	7/32	6	1 1/4	32	3/8	16



Safety Precaution: Read and follow all safety and operation instructions.
 Warning: Face & eye protection must be worn while operating power tools, per ANSI B186.1.



FEATURES:

- Single, Tandem, and Triple Cylinder Options
- Riveting Capacity:
 - 1/8" (3 mm) (Single Cylinder)
 - 3/16" (5 mm) (Tandem Cylinder)
 - 1/4" (6 mm) (Triple Cylinder)
- Safety Throttle



POWER TOOLS

COMPRESSION RIVETERS

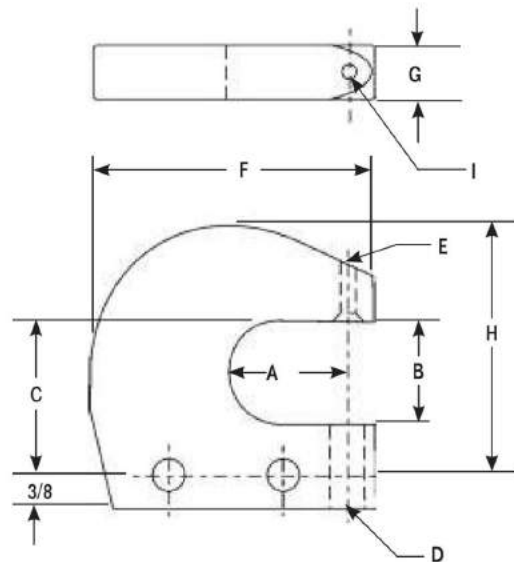
Model Number	Rivet Set Shank Diameter		Cap Cold Rivet Diameter		Standard "C" Yoke Dimension				Closed Height		Max Travel		Max Force at 90 psi		Stroke at Max Force		Net Weight w/Yoke		Overall Length			
	in	mm	in	mm	in	mm	Reach	Gap	in	mm	in	mm	lb	kN	in	mm	lb	kg	in	mm		
CR-1 - Single Cylinder																						
SZE3000	N/A	N/A	3/32	2	1/8	3	N/A	N/A	N/A	N/A	N/A	N/A	1/16	14	3000	13.4	f-1/16	2	3 1/2	1.6	8 1/2	216
SZE3015	3/16	5	3/32	2	1/8	3	1 1/2	38	1 1/4	32	1 1/16	78	3/16	14	3000	13.4	f-1/16	2	4 1/2	2	10 1/4	262
CR-1 - Tandem Cylinder																						
SZE6000	N/A	N/A	5/32	4	3/16	5	N/A	N/A	N/A	N/A	N/A	N/A	1/16	14	6000	26.7	f-1/16	2	4 1/2	2	11 1/4	287
SZE6015	3/16	5	5/32	4	3/16	5	1 1/2	38	1 1/4	32	1 1/16	78	3/16	14	6000	26.7	f-1/16	2	5 1/2	2.5	14	356
CR-1 - Triple Cylinder																						
SZE8000	N/A	N/A	5/32	4	1/4	6	N/A	N/A	N/A	N/A	N/A	N/A	1/16	14	9000	40.1	f-1/16	2	7 1/2	3.4	16	406
SZE8015	3/16	5	3/16	5	1/4	6	1 1/2	38	1 1/4	32	1 1/16	78	3/16	14	9000	40.1	f-1/16	2	8 1/2	3.9	18 3/4	476

Due to a variety of jobs and applications, Squeeze Riveters are not supplied with rivet sets. Please contact Sioux Tools, Inc. or your local distributor for rivet set information.
General: Air Inlet Size: 1/4" NPT • Recommended Hose Size: 3/8" (10 mm) • Performance rated @ 90 psig (6.2 bar) air pressure
Standard Equipment: Parts List • Safety and Instruction Manual • Safety throttle action

SPECIALTY: RIVETERS

C-YOKE NOMENCLATURE

- A** Reach
- B** Gap
- C** Height from yoke hole to center to top of yoke gap
- D** Bottom set hole diameter CR-1 or CR-2
- E** Top set hole diameter CR-1 or CR-2
- F** Width of yoke set hole center to top of yoke
- G** Thickness of yoke
- H** Height of yoke from bolt hole center to top of yoke
- I** Radius from set hole center



A		B		C		D		E		F		G		H		I	
in	mm	in	mm	in	mm	in	mm	in	mm	in	mm	in	mm	in	mm	in	mm
1 1/2	38	1 1/4	32	1 7/8	48	3/8	10	3/16	5	2 7/8	73	3/16	14	3	76	1/4	6
						7/16	11	1/4	6								



RIVET SHAVER SKIRTS



Part Number	Cutter Diameter	
	in	mm
2925-5	5/16	8
2925-6	3/8	10
2925-7	7/16	11
2925-8B	1/2	13
2925-9	9/16	14
2925-9W	9/16	14
2925-10	5/8	16

STABILIZER

Part Number	For Use On
7427A	SRS6P21 series



74274A

COLLETS



Collet Type	Part Number	Capacity	For Use On
Sioux	44440	1/4"	1971HP series
Sioux	66038	6 mm	1971HP series
100 Series	21126B	1/4"	1980A, 1982A, RT1985
100 Series	21125	3/8"	1980, RT1982, 1985A
100 Series	21124	1/2"	1981F, RT1981, RT1983, 1985-1/2



Collet Type	Collets
21095	#10 - 5/16"
21139	1/4" - 1/2"

SUPPORT HANDLE

Part No. 2355B



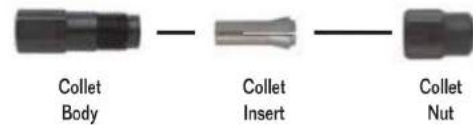
SIGNATURE SERIES SUPPORT HANDLE

Part No. SPSDR-14A



COLLET CHUCK ASSEMBLIES

Sioux Style Collets



Collet Chuck Assemblies	Sioux Collet Chuck				
	1/8"	3 mm	3/16"	1/4"	6 mm
Chuck Assembly	43342	68617	43341	43340	68618
Collet Body	21096	21096	21096	21096	21096
Collet Insert	44522	66037	44523	44440	66038
Collet Nose	N/A	N/A	N/A	N/A	N/A
Collet Nut	21097	21097	21097	21097	21097

200 Series Heavy Duty Double Tapered Collet



Part Number	Description
74071	Collet Nut
74072	Collet (1/8")
74073	Collet (3/16")
74074	Collet (1/4")
77400	Collet (1/4") Heavy Duty
68030	Collet (3/8")
74075	Collet (3 mm)
74076	Collet (6 mm)
68056	Collet (8 mm)
77057	Collet Body SDG Series
74070	Collet Body (1 hp)

300 Series Heavy Duty Double Tapered Collet



Part Number	Description
74128	Collet Nut
74124	Collet (3/32")
74121	Collet (1/8")
74120	Collet (1/4")
74122	Collet (3 mm)
74123	Collet (6 mm)
77505	Collet Body SAS Series
74125	Collet Body SDG Series



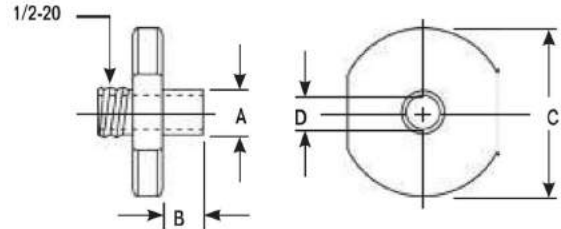


ROUTER BASE ASSEMBLY



Part Number	Used On
1992	SRT10S25BB
1993	1971HP / SRT10S25BB
1994	1971HPC / SRT10S25BB

TEMPLATE GUIDE CHART



Part Number	Dimensions in Inches			
	A Pilot OD	B Pilot Length	C Flange OD	D Pilot ID
68613-12	3/8	1/4	3/4	9/32
68613-14	3/8	3/8	3/4	9/32
68613-16	3/8	1/2	3/4	9/32
68613-22	3/8	1/8	1 1/2	9/32
68613-24	3/8	1/4	1 1/2	9/32
68613-26	3/8	3/8	1 1/2	9/32
68613-40	7/16	1/4	3/4	21/64
68613-42	7/16	3/8	3/4	21/64
68613-44	7/16	1/2	1 1/2	21/64
68613-48	7/16	1/4	1 1/2	21/64
68613-50	7/16	3/8	1 1/2	21/64
68613-52	7/16	1/2	1 1/2	21/64
68613-62	1/2	1/4	1 1/2	11/32
68613-64	1/2	3/8	1 1/2	11/32
68613-66	1/2	1/2	1 1/2	11/32
68613-72	1/2	1/2	2 1/2	11/32

LAMINATE BASE TRIMMER

Part No. 1991

For use on SRT10S25LT series routers



RECIPROCATING SAW BLADES

Packaged in Cartons of 5



1815



1816

Part Number	Length		Teeth Per Inch
	in	mm	
For Use on Model 1300			
1815	6	150	10
1810	6	150	14
1813	4	100	14
1811	6	150	18
1812	4	100	18
1814	6	150	24
1816	6	150	6
1819	12	300	6



FILTER, REGULATOR, LUBRICATOR ASSEMBLY

Part No. 1660B
1/2" NPT fittings
Air Flow: 30 – 75 cfm



Part Number	Description
1660B	Complete Air Control Unit, 1/2" PT
1661	Lubricator Only, 1/2" PT
1662A	Regulator with Gauge, 1/2" PT
1663	Manual Flex Drain Filter, 1/2" PT
1667	Automatic Drain – Optional

FILTER, REGULATOR, LUBRICATOR ASSEMBLY

Part No. 1651MA
3/4" NPT air fittings
Air Flow: Over 75 cfm



Part Number	Description
1651MA	Complete Automatic Air Control Unit, 3/4" PT, larger capacity and float type filter for automatic drain
1652M	Lubricator only, 3/4" PT, 1 quart capacity
1654B	Regulator with Gauge, 3/4" PT
1653MA	Automatic Air Filter, 3/4" PT, automatic float drain empties when full

AIR REGULATOR

Part No. 1335B
1/4" NPT Male/Female
• Mounts inline with air inlet
• Allows fine adjustment of air flow



HI-CAPACITY QUICK CHANGE COUPLERS



Part Number	Description	Thread
1316	Male Coupler Nipple	1/4" NPT
1317	Male Coupler Nipple	3/8" NPT
1318	Male Coupler Nipple	1/2" NPT
1391B	Quick Change Coupler	1/4" NPT
1392B	Quick Change Coupler	3/8" NPT
1393	Quick Change Coupler	1/2" NPT
1395	Female Coupler Nipple	1/4" NPT
1396	Female Coupler Nipple	3/8" NPT

NYLON RECOIL AIR HOSE



Part Number	ID		Length		Fittings
	in	mm	ft	m	
1326B	1/4	6	25	7.6	1/4" NPT
1327B	3/8	10	25	7.6	1/4" NPT

SIoux-PER SWIVEL

Allows the air hose to rotate 360° on 2 axes.



Part Number	Description
1338-25	1/4" non-regulated air swivel connector with safety pin
1338-38	3/8" non-regulated air swivel connector with safety pin
1338-50	1/2" non-regulated air swivel connector with safety pin
1338FC-25	1/4" regulated air swivel connector with safety pin

BALANCERS



Part Number	Capacity		Cable Length	
	lb	kg	ft	m
2300-4B	2 - 4	0.9 – 1.8	5.2	1.6
2300-6	4 - 6	1.8 – 2.7	6.7	2
2300-8B	6 - 8	2.7 – 3.6	6.7	2





GREASE GUN

Part No. 439

Use with impact wrenches and multi-assembly angle tools.
For use with grease tube 1232A-04.



GREASE NOZZLE

Part No. 469A

Used with No. 468A grease gun.



GREASE

Part Number	Description
289A	1 Quart
289A-1	2 Pounds
289A-2	6 Pounds
1198	6 Ounces
1198-1	2 Pounds
1198-2	6 Pounds
1232A-04	4 Ounces
1232A-1	1 Quart

AIR MOTOR OIL FOR AIR TOOLS

Part No. 288

1/2 Pint

Part No. 288-1

1 Quart

Part No. 288-2

2 Liter

