

# JACK STANDS



## **Durable Jack Stands**

*The CP Jack stand range includes 3 models with self locking handle & extra large feet for improved security and stability during use.*

### **EASY TO OPERATE**

Ratchet action for height adjustment

### **SAFETY**

Self locking handle with composite tip & locking pin

### **HIGH STABILITY**

Extra-large plated feet resist sinking into the ground



## Jack Stands



### JACK STANDS

#### CP82020

#### HIGH QUALITY YET AFFORDABLE JACK STANDS

##### FEATURES

- Feet with extra large plate
- Self locking handle & locking pin
- Ductile iron support column & rugged steel frame construction
- Ratchet action for height adjustment
- Sold in pairs

##### BENEFITS

- High stability
- Improved safety
- Durability
- Easy to operate

#### CP82030

Same features as CP82020 with 3 ton capacity

#### CP82060

Same features as CP82020 with 6 ton capacity



### JACK STANDS

#### CP82120

#### HIGH CAPACITY, HIGH QUALITY, QUICK HEIGHT ADJUSTMENTS

##### FEATURES

- 17.71 in. – 450 mm for the 12T model
- Welded steel construction to prevent distortion or twisting
- Height adjustment pin is attached to stand to prevent loss
- Handle welded to base for easy adjustment and positioning
- Large v-shaped saddle to support and to position vehicle frame
- Multiple hole locations in support tube, supplied with strong safety pin
- Wide, square base
- At ISO 9001 and ASME Standards
- Used in pairs for supporting trucks, trailers, and equipment in fleet garages, agricultural, industrial and construction environments

##### BENEFITS

- High capacity
- High quality and strength
- Functional
- Convenient
- Quick height adjustments
- High stability

#### CP82200

Same features as CP82120 with 20 ton capacity



MODEL	PART NUMBER	CAPACITY		WEIGHT		DIMENSIONS										POSITION IN HEIGHT
		tons	short tons	kg	lbs	MIN. HEIGHT		MAX. HEIGHT		STROKE		WIDTH		DEPTH		
mm	in.					mm	in.	mm	in.	mm	in.	mm	in.			
CP82020	894 108 2020	2	2.2	2.5	5.5	280	11.0	425	16.7	145	5.7	195	7.7	182	7.2	10
CP82030	894 108 2030	3	3.31	3	6.6	300	11.8	455	17.9	155	6.1	250	9.8	182	7.2	11
CP82060	894 108 2060	6	6.61	5	11.0	400	15.7	620	24.4	220	8.7	283	11.1	258	10.2	12
CP82120	894 108 2120	12	13.22	10	22.0	300	11.7	450	17.7	220	8.66			150	5.9	
CP82200	894 108 2200	20	22.02	18	39.7	350	13.7	500	19.6	280	11.02			200	7.8	





# BOTTLE JACKS



## Versatile Bottle Jacks

*The CP bottle jack range is equipped with a powerful mounted manual pump hydraulic system. Used on light or heavy vehicles, they are compact and versatile. The integrated safety valve prevents overloading and the large base provides high safety and great stability.*



CP81020  
2 T

CP81030  
3 T

CP81050  
5 T

CP81080  
8 T

CP81120  
CP81121  
CP81122  
12 T

CP81200  
CP81201  
20 T

CP81300  
CP81502  
30 T  
50 T

## Hydraulic Bottle Jacks

**CP81020/030/050/080/120/121/122/200/201/300/502**

## BENEFITS

- High capacity & durability
- 100% sealed & robust
- High standing & stability
- Improved safety
- Easy to disassemble & store
- Easy to use

## FEATURES

- Double guidance & chromed plated steel piston made of one piece
- Automatic welded construction
- Large base plate
- Safety valve against overloading
- Handle on pump in two parts to assemble/disassemble
- Handle supplied with a small hook to get from under the vehicle
- Ideal to be used in combination with the CP jack stands
- This product is not marketed yet in North America and Australia.

## EASY HEIGHT ADJUSTMENT

Threaded extension within piston

## HIGH DURABILITY

Solid chrome plated steel piston

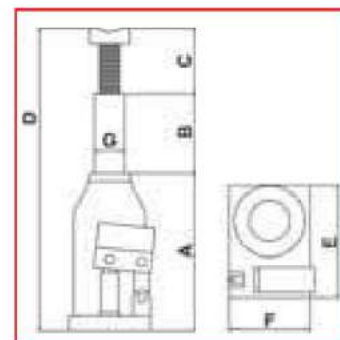
## SAFETY &amp; STABILITY

Safety valve prevents overloading

Large base plate

## EASY TO USE

Handle supplied with a small hook to retrieve jack from under the vehicle



MODEL	PART NUMBER	CAPACITY		WEIGHT		DIMENSIONS													
						A		A+B (MAX)		C (+thread)		D		E		F		G	
		tons	short tons	kg	lbs	mm	in.	mm	in.	mm	in.	mm	in.	mm	in.	mm	in.	mm	in.
CP81020	894 108 1020	2	2.2	2.4	5.29	180	7.1	297	11.7	52	2.1	347	13.7	120	4.7	80	3.2	20	0.8
CP81030	894 108 1030	3	3.31	2.9	6.39	190	7.5	304	12.0	62	2.4	366	14.4	125	4.9	85	3.4	23	0.9
CP81050	894 108 1050	5	5.51	3.8	8.38	200	7.9	322	12.7	70	2.8	390	15.4	140	5.5	90	3.5	29	1.1
CP81080	894 108 1080	8	8.82	5.8	12.79	200	7.9	322	12.7	72	2.8	394	15.5	160	6.3	100	3.9	35	1.4
CP81120	894 118 1120	12	13.23	6.7	14.77	180	7.1	275	10.8	76	3.0	347	13.7	175	6.9	120	4.7	43	1.7
CP81121	894 118 1121	12	13.23	9.5	20.9	240	9.4	326	12.8	40	1.6	308	12.1	195	7.7	145	5.7	41	1.6
CP81122	894 118 1122	12	13.23	5.9	13	155	6.1	320	12.6	-	-	445	17.5	200	7.9	150	5.9	41	1.6
CP81200	894 108 1200	20	22.05	9.1	20.06	185	7.3	335	13.2	90	3.5	478	18.8	195	7.7	145	5.7	53	2.1
CP81201	894 108 1201	20	22.05	13.2	28.7	275	10.8	345	13.5	45	1.8	270	10.6	140	5.5	105	4.1	51	2.0
CP81300	894 108 1300	30	33.07	18.3	40.34	285	11.2	454	17.9	70	2.8	514	20.2	205	8.1	140	5.5	62	2.4
CP81502	894 108 1502	50	55.12	35.3	77.8	300	11.8	482	19.0	-	-	482	19.0	220	8.7	175	6.9	65	2.6





# TROLLEY JACKS



## Robust Trolley Jacks

*The CP trolley jack range is manufactured with heavy duty steel. Chassis are welded with reinforcing rims for daily workshop use on passenger vehicles and vans. With high and quick lifting capacity, they provide productivity and ease of use.*



## Trolley Jacks

## CP80015 / CP80020 / CP80030

## BENEFITS

- Robust & Durable
- Quick lifting
- Comfort
- Easy to use

## FEATURES

- Heavy duty steel welded chassis with reinforcing rims
- Two pumps & one foot pedal for fast approach without load
- Handle with protector sponge & soft rubber pad on the saddle plate
- Turning handle for easy release of load
- Low profile construction
- Low noise & smooth to floor tiles due to oil and acid resistant plastic wheels
- This product is not marketed yet in North America and Australia.

## LOW PROFILE CONSTRUCTION

Down to 3.1" / 80 mm for easy placement under vehicle (CP80015 model)

## HIGH LIFTING CAPACITY

Lifting height up to 21.6" / 550 mm (CP80030 model)

## QUICK LIFTING

Foot pedal for fast approach without load

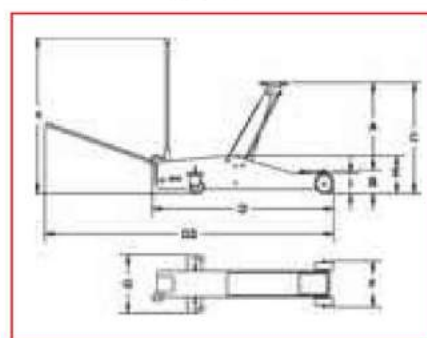
## CONVENIENT

- Handle with protector sponge
- Soft rubber pad on the saddle plate
- Low noise, oil and acid resistant plastic wheels

\* Steel wheels for North American market



See accessories on page 126



MODEL	PART NUMBER	CAPACITY		WEIGHT		DIMENSIONS															
						A		B		C		D		D2		E		F		G	
		tons	short tons	kg	lbs	mm	in.	mm	in.	mm	in.	mm	in.	mm	in.	mm	in.	mm	in.	mm	in.
CP80015	894 108 1015	1.5	2.2	50.5	111.30	620	24.4	70	2.75	540	21.3	920	36.2	2140	84.3	153	6.02	282	11.1	50.5	1.9
CP80020	894 118 1020	2	1.65	39.4	86.00	430	16.9	75	3	505	19.9	750	29.5	1960	77.2	150	5.9	270	10.6	39.4	1.5
CP80030	894 118 1030	3	3.31	45	99.20	455	17.9	95	3.7	550	21.7	779	30.7	1979	77.9	160	6.3	160	6.3	45	1.7
For NA markets only																					
CP80020	894 118 1021	2	1.65	39.4	86.00	430	16.9	75	3	505	19.9	750	29.5	1960	77.2	150	5.9	270	10.6	39.4	1.5
CP80030	894 118 1031	3	3.31	45	99.20	455	17.9	95	3.7	550	21.7	779	30.7	1979	77.9	160	6.3	160	6.3	45	1.7





# BALLOON JACKS



### High Lifting Capacity Balloon Jacks

Choose the CP882xx Series balloon jacks for your garage and auto body shop. A range of high quality, high lifting capacity balloon jacks by Chicago Pneumatic. Featuring a 2 ton lifting capacity, the CP882xx balloon jacks are available with short or long handle and with 2 or 3 balloons depending on your lifting needs. Low profile and lightweight, the new CP882xx balloon jack series delivers high lifting capacity from 4.5" (115mm) to 22" (560mm).



**CP88221 2T**

2 balloons with short handle



**CP88222 2T**

2 balloons with long handle



**CP88232 2T**

3 balloons with long handle

## Balloon Jacks

### CP88221 2T / CP88222 2T / CP88232 2T

#### BENEFITS

- High Lifting Capacity
- Safety
- Easy to Operation
- Lightweight
- Low Profile

#### FEATURES

- From 115 to 430 mm within extension
- Highly resistant diaphragm and internal telescopic guide
- Overload safety valve
- On/Off ergonomic lever
- 115 mm in uninflated position
- Extension included: 60 mm height



Balloon jacks can be used on column lifts. Ideal for tire changing applications and bodyshops

#### SAFETY & LONG LIFE

Durable diaphragm made of 4 ply cord with a 0.27"- 0.29" (7-7.5mm) thickness

#### LOW PROFILE

4.53" to 7.9" (115 to 200mm) uninflated position

#### EASY TO OPERATE

- Ergonomic levers
- Soft handle grip
- Overload safety valve
- 360° air inlet swivel

#### SAFETY & HIGH STABILITY

- Internal telescopic guide / stabilizers
- Large base

#### EASY TO USE

- 3 position adjustable handle
- Durable composite wheels for trolley models



See accessories on page 126

MODEL	PART NUMBER	CAPACITY		WEIGHT		DIMENSIONS											
						A Max.		B		C		D		E		F	
		tons	short tons	kg	lbs	mm	in.	mm	in.	mm	in.	mm	in.	mm	in.	mm	in.
CP88221 2T	894 108 8221	2	2.2	15	33	14	115	265	10	185	7	82	3	98	4	80	3
CP88222 2T	894 108 8222	2	2.2	18	40	14	115	265	10	185	7	82	3	98	4	80	3
CP88232 2T	894 108 8232	2	2.2	19	42	20	200	250	10	185	7	82	3	98	4	60	2





# AIR HYDRAULIC JACKS



## Air Hydraulic Jacks

*CP hydraulic jacks are telescopic jacks, ideal for servicing trucks, buses and heavy machinery. Jacks are equipped with an automatic stop valve for greater operator safety. The large wheels, cylinder handle and 3 position handle allows easier maneuvering.*

### FAST & HIGH LIFTING CAPACITY FOR HIGH AXLES:

- H30T - 16.1 in. / 409 mm
- 50T - 18 1/2 in. / 472 mm
- 80T - 22.16 in. / 563 mm
- 100T - 24.00 in. / 610 mm
- Air powered piston
- Includes 2 extensions for higher lifting
- Stored on handle for transport

### EASY TO USE

Simple controls



### EASY TO TRANSPORT

Cylinder mounted carrying handle



### PREMIUM QUALITY:

- Piston and pump
- Anti dust seals
- US manufactured pressure joint

### HIGH DURABILITY

- Hard chromium plated piston rod

### HIGH STABILITY

Large base.

### LOW PROFILE

Ideal for easily accessing lifting points on low chassis trucks and buses

### EASY MANEUVERING

- 4 1/4 ft. / 1.3 m / long handle bar (1 piece handle) allows easy access to controls when fully positioned under vehicle
- Handle bar locks in 3 positions: 45°, 90° & 180°
- Large & soft rubber wheels



## Air Hydraulic Jacks, Telescopic for Trucks and Heavy Vehicles



### AIR HYDRAULIC JACKS

#### CP85030

**HIGH LIFTING CAPACITY  
HIGH DURABILITY,  
SAFETY**

##### FEATURES

- Maximum height: 16.1 in. / 409 mm
- Air powered piston
- Includes 2 extensions for higher lifting - Stored on handle for transport
- Piston and pump
- Anti dust seals
- Ideal for easily accessing lifting points on low chassis trucks and buses
- Convenient joystick controls
- Cylinder mounted carrying handle
- 4 ¼ ft. / 1.3 m / long handle bar (1 piece handle) allows easy access to controls when fully positioned under vehicle
- Handle bar locks in 3 positions: 45°, 90° & 180°
- Large & soft rubber wheels

##### BENEFITS

- High Lifting Capacity
- High Durability
- Fast and easy operation controlled from the handle
- Low Profile
- Convenient
- Easy maneuvering and to transport
- Safety



#### CP85050

50 ton model, same features as CP85030 with maximum height: 18 1/2" in / 472 mm at 15 tons



### AIR HYDRAULIC JACKS

#### CP85080

**HIGH LIFTING CAPACITY  
HIGH DURABILITY,  
SAFETY**

##### FEATURES

- Maximum height: 22.16 in. / 563 mm
- Air powered piston
- Includes 2 extensions for higher lifting - Stored on handle for transport
- Piston and pump
- Anti dust seals
- Ideal for easily accessing lifting points on low chassis trucks and buses
- Convenient joystick controls
- Cylinder mounted carrying handle
- 4 ¼ ft. / 1.3 m / long handle bar (1 piece handle) allows easy access to controls when fully positioned under vehicle
- Handle bar locks in 3 positions: 45°, 90° & 180°
- Large & soft rubber wheels

##### BENEFITS

- High Lifting Capacity
- High Durability
- Fast and easy operation controlled from the handle
- Low Profile
- Convenient
- Easy maneuvering and to transport
- Safety

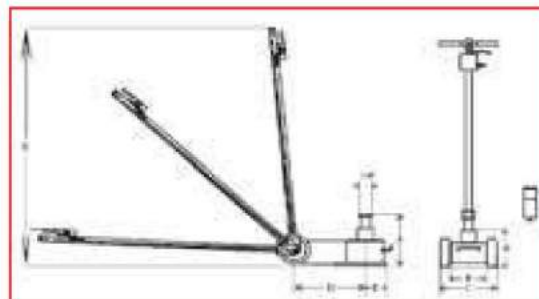


#### CP85100

100 ton model, same features as CP85030 with maximum height: 24 in / 610 mm at 33 tons



See accessories on page 126



MODEL	PART NUMBER	CAPACITY		WEIGHT		DIMENSIONS																	
						A		B		C		D		D+E		E		F		G		P	
		tons	short tons	kg	lbs	mm	in.	mm	in.	mm	in.	mm	in.	mm	in.	mm	in.	mm	in.	mm	in.	mm	in.
CP85030	894 108 5030	30 / 15	33	38	84	150	5.9	176	6.9	290	11.5	240	9.5	326	12.8	86	3.4	223/289	8.8/11.4	1365	53.6	71	2.8
CP85050	894 108 5050	50/25/15	55	60	132	160	6.3	200	7.9	282	11.2	470	18.6	555	21.8	85	3.4	222/283/352	8.7/11.1/13.9	1430	56.2	71	2.8
CP85080	894 108 5080	80/50	88	103	227	230	9.1	254	10.0	340	13.5	415	16.4	520	20.4	105	4.2	341/443	13.4/17.4	1610	63.3	82	3.2
CP85100	894 108 5100	100/60/33	110	105	232	215	8.5	209	10.8	341	13.5	723	28.6	860	33.7	137	5.5	313/403/490	12.3/15.8/19.3	1600	62.9	70	2.8





# WORKSHOP PRESSES



### High Durability Workshop Presses

*The CP press range includes 4 models for workshop operations on light and heavy vehicles. The two step stroke system provides high precision. The large gauge (in short and metric tons) eases the control of the pressure and the sturdy steel frame guarantees high durability.*

#### FLEXIBLE

Left/right moveable cylinder

#### CONVENIENT

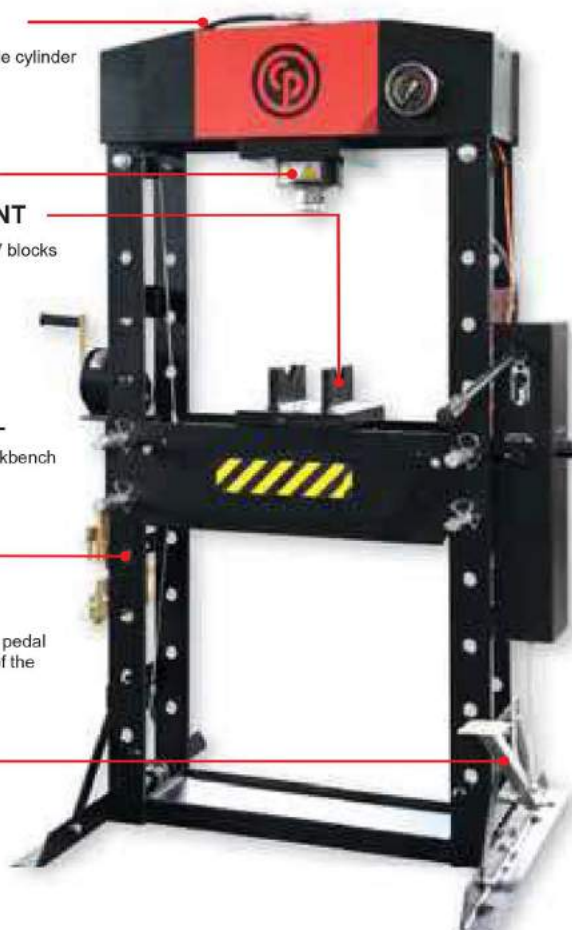
Delivered with 2 V blocks

#### PRACTICAL

Eight position workbench

#### EFFICIENT

Easy-to-reach foot pedal for quick descent of the cylinder



#### CONVENIENT

Winch with four easily removable steel locking pins are used to adjust and secure bench height

#### VERSATILE

Delivered with a quick chuck and 8 punches (included with CP86300 & CP86500)

#### EASY CONTROL

Large gauge measures both short and metric tons

#### PRECISE 2-STEP STROKE SYSTEM

Closed: Full stroke for quick approach.  
Open: Small stroke for fine tuning of the load

## Workshop Presses

**CP86150****WORKSHOP PRESSES****COMPACT BENCH PRESS****FEATURES**

- 2 step stroke system -> Closed: Full stroke for quick approach. Open: Small stroke for fine tuning of the load
- Large gauge measuring short and metric tons
- Delivered with 2 V blocks
- This product is not marketed yet in North America and Australia.

**BENEFITS**

- Precision
- Easy control
- Stable

**CP86151**

Same features as CP86150 for NA markets

**CP86200 / CP86201**

Same features as CP86150 with 20 ton capacity

**CP86300 / CP86301**

Same features as CP86150 with 30 ton capacity

**CP86500 / CP86501**

Same features as CP86150 with 50 ton capacity



See accessories on page 126

**CP86750****WORKSHOP PRESSES****DURABLE, HIGH CAPACITY PRESS & PNEUMATIC PUMP DRIVEN****FEATURES**

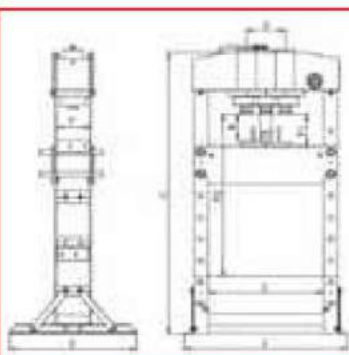
- Pneumatic pump driven by foot
- 2 step stroke system -> Closed: Full stroke for quick approach. Open: Small stroke for fine tuning of the load
- Large gauge measuring short and metric tons
- Delivered with 2 V blocks
- Delivered with a quick chuck and 8 punches
- This product is not marketed yet in North America

**BENEFITS**

- Fast & Easy Work
- Precision
- Easy control
- Stable
- CE & ASME certified

**PROTECTION CAGE**

Included with the press for North American markets only. Can also be ordered as optional accessory in the rest of the world - see page 126

**CP86751**

Same features as CP86750 for NA markets

**CP86100 / CP86101**

Same features as CP86750 with 100 ton capacity

MODEL	PART NUMBER	CAPACITY		WEIGHT		DIMENSIONS																	
						A		B		C		E		F		F1		F2		R		M	
		tons	short tons	kg	lbs	mm	in.	mm	in.	mm	in.	mm	in.	mm	in.	mm	in.	mm	in.	mm	in.	mm	in.
CP86150	894 108 6150	15	16.5	76	166	700	28	540	21	882	35	500	19.7	120	4.7	157	6.2	457	18	160	6.3		
CP86200	894 108 6200	20	22.1	105	232	740	29	700	28	1772	70	510	20.1	132	5.2	185	7.3	1175	46.3	186	7.3		
CP86300	894 108 6300	30	33.1	167	368	795	31	700	28	1772	70	535	21.1	140	5.5	151	5.9	1031	40.6	160	6.3	200	7.9
CP86500	894 108 6500	50	55.1	298	657	1030	41	800	32	1830	72	730	28.7	207	8.1	68	2.7	1048	41.3	200	7.9	245	9.6
CP86750	894 108 6750	75	82.7	498	1098	1140	45	800	32	1840	72	800	31.5	245	9.6	170	6.8	884	34.8	250	9.9	260	10.2
CP86100	894 108 6100	100	110.2	766	1689	1200	47	900	35	1830	72	787	30.9	300	11.7	114	4.5	814	32.1	300	11.9	235	9.2

For NA markets only

CP86151	894 108 6151	15	16.5	76	166	700	28	540	21	882	35	500	19.7	120	4.7	157	6.2	457	18	160	6.3		
CP86201	894 108 6201	20	22.1	105	232	740	29	700	28	1772	70	510	20.1	132	5.2	185	7.3	1175	46.3	186	7.3		
CP86301	894 108 6301	30	33.1	167	368	795	31	700	28	1772	70	535	21.1	140	5.5	151	5.9	1031	40.6	160	6.3	200	7.9
CP86501	894 108 6501	50	55.1	298	657	1030	41	800	32	1830	72	730	28.7	207	8.1	68	2.7	1048	41.3	200	7.9	245	9.6
CP86751	894 108 6751	75	82.7	498	1098	1140	45	800	32	1840	72	800	31.5	245	9.6	170	6.8	884	34.8	250	9.9	260	10.2
CP86101	894 108 6101	100	110.2	766	1689	1200	47	900	35	1830	72	787	30.9	300	11.7	114	4.5	814	32.1	300	11.9	235	9.2





# WORKSHOP CRANES

**NEW**



## Workshop cranes

*The CP workshop crane is ideal for servicing passenger vehicles, SUV and pick-up trucks. It's equipped with a hoist arm with 3 extension positions and pin locking mechanism for high access up to 53.1 in / 1350 mm @ 500 Kg*



**CP83100**

1 ton workshop crane

## Workshop Cranes

### CP83100-1T

#### BENEFITS

- High access up to 53.1 in / 1350 mm @ 500 Kg
- High maneuverability
- Easy to use by only one operator
- Convenient
- Fast operation
- High stability
- Access to low clearance car
- Easy to storage

#### FEATURES

- Double action pump system
- 200 ° Swiveling pump
- Safety release valve
- Ultralow profile legs (90mm)
- Foldable leg with safety pin and extra storage wheels
- Large handle and swiveling nylon wheels
- 3 arm position

#### HIGH ACCESS UP to 53.1 in / 1350 mm @ 500 Kg:

- Hoist arm with 3 extension positions and pin locking mechanism

#### HIGH MANEUVRABILITY

- Handle at the back to easily move about

#### EASY TO USE BY ONLY ONE OPERATOR:

- Swivel pump handle position
- Release valve at the bottom of the cylinder

#### EASY TO STORAGE:

- Foldable and compact with 2 wheels for moving the crane once folded

#### CONVENIENT

- Turnable hook with safety clip

#### FAST OPERATION

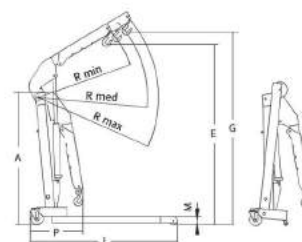
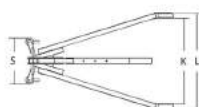
- Double pump system

#### HIGH STABILITY

- V shaped legs

#### ACCESS TO LOW CLEARANCE CAR

- Low profile nylon wheels with very low frame – 3.54 in - 90 mm



MODEL	PART NUMBER	CAPACITY			WEIGHT		DIMENSIONS											
							A	E	G	J	K	L	M	P	S	R min.	R med.	R max.
		P1/kg	P2/kg	P3/kg	kg	lbs	mm	mm	mm	mm	mm	mm	mm	mm	mm	mm	mm	mm
CP83100	894 108 3100	1000	750	500	98.5	217.15	1560	2120	2240	1525	790	981	90	480	460	1100	1225	1350





# WHEEL DOLLIES



## Versatile Wheel Dollies for Heavy Vehicles

*CP wheel dollies are a sturdy and, handy assembly aid for trucks, busses and tractors.*

Stop rollers for easy positioning of the wheel into the frame

### VERSATILE

Adjustable arms for various wheel sizes  
(width 11.4" - 24.4" / 29 - 62 cm )

### EASY TO OPERATE

Equipped with rollers for easy alignment of wheels in front of the vehicle's stud bolts or brake disk holes



## Wheel Dollies



### CP84010

#### WHEEL DOLLIES

#### EASY-TO-USE SINGLE WHEEL DOLLY

##### FEATURES

- Adjustable arms
- Sturdy & handy assembly aid for various types of wheels (trucks, vans and cars)
- Equipped with rollers for easy positioning
- Stop rollers on the rear side that avoid pushing the wheel onto the frame
- Ergonomic handle with rounded & soft safety grip

##### BENEFITS

- Versatile
- Easy to operate
- This product is not marketed yet in North America and Australia.



### CP87700

#### WHEEL DOLLIES

#### RELIABLE, ROBUST, FAST LIFTING

##### FEATURES

- Adjustable and sliding arms to wheel diameter from 21.4 – 50.5 In. / 545 to 1280 mm
- 2 ball bearing rollers for twin wheel trucks
- Chain attachment for safe balance during removal and transport
- Sturdy metal frame
- Cylinder position provides clear access to operating area through the open frame
- 2 swivel front wheels and 2 fixed rear wheels
- Double action hydraulic piston by effortless foot pedal or by handle

##### BENEFITS

- Easy to operate & high capacity
- Full access to wheel bolts
- Easy Rotation and Positioning
- Reliable
- High maneuverability
- Easy and Fast Lifting
- CE & ASME certified



### CP87120

#### WHEEL DOLLIES

#### RELIABLE, ROBUST, FAST LIFTING

##### FEATURES

- 2 handles for easy manipulation and wheel positioning – handle can be placed in 3 different positions
- Height adjustment
- Adjustable width from 39.4 – 78.7 In. / 1000 to 2200 mm with double action hydraulic pump
- Pedal to load/unload wheels
- 4 large swivel wheels with brake
- Fast turnable wheel attachment to keep wheels safely balanced
- 8 holes keep different strokes stable – with a pin - once set up
- 2 x 4 large rollers to ease the handling of tires with deep treads
- Angle of the rollers automatically adjusts
- Convenient for outside workshop applications: easy and quick disassembly

##### BENEFITS

- Easy to operate
- Reliable
- Adjustable
- High maneuverability
- Easy and Fast Adjustment
- CE & ASME certified

MODEL	PART NUMBER	CAPACITY		MAX. FORK WIDTH		WEIGHT		WEIGHT		LENGTH		MIN HEIGHT		MAX HEIGHT	
		kg	lbs	mm	in.	kg	lbs	kg	lbs	mm	in.	mm	in.	mm	in.
CP84010	894 108 4010	250	550	305	12.01	31.5	14.3	31.5	14.3	330	13	970	38.2	1005	39.6
CP87700	894 108 7700	700	1540	685	27	253.3	115	253.3	115	88	3.5	905	35.6	1430	56.3
CP87120	894 108 7120	1200	2640	1510	59.5	286.4	130	286.4	130	100	3.9	1360	53.5	2110	83.1





# TORQUE WRENCHES



### Durable and Accurate Torque Wrenches

Many facets of both automotive and heavy truck repair, in addition to numerous industrial maintenance applications, require repetitive accurate torquing for safety and proper equipment operation.

The CP89 Series of torque wrenches offer precision torquing for up to 25,000 cycles and are designed to provide high durability.

#### COMPACT

For work in restricted areas

#### DURABLE

Reliability of the mechanism for up to 25000 cycles

#### ROBUST

54 tooth fixed pear head ratchet with quick socket release

#### EASY & PRECISE ADJUSTMENT

- Torque adjustment with manual locking in front of the handle
- Fine scale graduation

#### COMFORT

Aluminum handle resistant to common chemicals in workshops

## Torque Wrenches

**CP8905****TORQUE WRENCH****ACCURACY, LONG-LASTING ACCURACY AND DURABILITY****FEATURES**

- Scale in ft-lbs and Nm
- Torque adjustment with manual locking in front of the handle
- Fine scale graduation
- Sensitive & sound signals when reaches the torque
- Provided with ISO 6789 calibration certificate
- Provided in a protective blow molded case
- Numbered wrenches

**BENEFITS**

- Accuracy: 4% according to the EN ISO 6789:2003 specifications
- Long-lasting accuracy up to 25000 cycles
- Durable: Reliability of the mechanism up to 25000 cycles
- Robust: 54 teeth fixed pear head ratchet with quick socket release
- Comfort: Black aluminum handle resistant to common chemicals in workshops
- Compact: To work in restricted areas

**CP8910**

Same features as CP8905 with 3/8" square drive - see table below for torque capacities

**CP8915****TORQUE WRENCH****ACCURACY, LONG-LASTING ACCURACY AND DURABILITY****FEATURES**

- Scale in ft-lbs and Nm
- Torque adjustment with manual locking in front of the handle
- Fine scale graduation
- Sensitive & sound signals when reaches the torque
- Provided with ISO 6789 calibration certificate
- Provided in a protective blow molded case
- Numbered wrenches

**BENEFITS**

- Accuracy: 4% according to the EN ISO 6789:2003 specifications
- Long-lasting accuracy up to 25000 cycles
- Durable: Reliability of the mechanism up to 25000 cycles
- Robust: 54 teeth fixed pear head ratchet with quick socket release
- Comfort: Black aluminum handle resistant to common chemicals in workshops
- Compact: To work in restricted areas

**CP8917**

Same features as CP8915 see table below for torque capacities

**CP8920****TORQUE WRENCH****ACCURACY, LONG-LASTING ACCURACY AND DURABILITY****FEATURES**

- Scale in ft-lbs and Nm
- Torque adjustment with manual locking in front of the handle
- Fine scale graduation
- Sensitive & sound signals when reaches the torque
- Provided with ISO 6789 calibration certificate
- Provided in a protective blow molded case
- Numbered wrenches

**BENEFITS**

- Accuracy: 4% according to the EN ISO 6789:2003 specifications
- Long-lasting accuracy up to 25000 cycles
- Durable: Reliability of the mechanism up to 25000 cycles
- Robust: 54 teeth fixed pear head ratchet with quick socket release
- Comfort: Black aluminum handle resistant to common chemicals in workshops
- Compact: To work in restricted areas

**CP8925**

Same features as CP8920 with 1" square drive - see table below for torque capacities

MODEL	PART NUMBER	SQUARE DRIVE	CAPACITY		GRADUATION		LENGTH	WEIGHT
			Nm	ft.lbs	Nm	ft.lbs		
TORQUE WRENCHES IN FOOT-POUNDS + NEWTON METERS graduation on the back side								
CP8905	894 108 9055	1/4	5 – 25	50 – 250 in-lbs.	1	1	9.64	2.82
CP8910	894 108 9105	3/8	15 – 75	15 – 75	0.5	0.5	16.14	3.3
CP8915	894 108 9155	1/2	30 – 150	30 – 150	1	1	20.47	4.45
CP8917	894 108 9170	1/2	60 – 340	60 – 340	2	2	24	3,88
CP8920	894 108 9205	3/4	100 – 550	100 – 550	5	5	12.87	35.71
CP8925	894 108 9255	1	150 – 750	150 – 750	5	5	15.07	42,27
TORQUE WRENCHES IN NEWTON METERS								
CP8905	894 108 9050	1/4	5 – 25	50 – 250 in-lbs.	0.1	0.1	245	1.28
CP8910	894 108 9100	3/8	20 – 100	20 – 100	0.5	0.5	410	1.5
CP8915	894 108 9150	1/2	40 – 200	40 – 200	1	1	495	1,57
CP8917	894 108 9175	1/2	50 – 250	50 – 250	2	2	610	1,76
CP8920	894 108 9200	3/4	150 – 750	150 – 750	5	5	1060	16,2
CP8925	894 108 9250	1	200 – 1000	200 – 1000	5	5	1255	19,1





# WORK LIGHT



## Powerful Work Light

### HIGH LIGHTING POWER:

30 LED's, 2250 Lux @ 50 cm, 55 Lumens

## CP8006

### RECHARGEABLE

Li-ion battery

### QUICK CHARGING

3.5 hours

### LONG WORKING TIME

6 hours (full power)

### WATERPROOF

IP65 grade



### ACCESSORIES INCLUDED

- Car plug (DC 12V)
- Plug (AC100-240V 50/60Hz in EU, UK, US or AUS versions)



### CONVENIENT

- 120° adjustable and magnetic base
- 360° swivel hook
- Led charging indicator

### LIGHTING OPTIONS

- Half light
- Full light
- Flashing
- Off

### COMFORTABLE & DURABLE

TPR housing

MODEL	LUX @ 50 CM	LUMENS	LENGTH		WIDTH		DEPTH		SAFETY	CHARGER INPUT	WEIGHT	
			mm	in.	mm	in.	mm	in.			g	lb
CP8006	2250	55	265	10.4	67	2.6	47	1.8	IP65	AC 100 – 240 V – 50/60 Hz & DC 12 V	37	0.8
CP8006	2250	55	265	10.4	67	2.6	47	1.8	IP65	AC 100 – 240 V – 50/60 Hz & DC 12 V	37	0.8
CP8006	2250	55	265	10.4	67	2.6	47	1.8	IP65	AC 100 – 240 V – 50/60 Hz & DC 12 V	37	0.8
CP8006	2250	55	265	10.4	67	2.6	47	1.8	IP65	AC 100 – 240 V – 50/60 Hz & DC 12 V	37	0.8



# JUMP STARTERS

NEW



## Extremely High Starting

9000 A PEAK (500 FARAD MODEL)

HIGH QUALITY: 5 YEAR WARRANTY, LIFETIME OF CAPACITOR 1 MILLION CYCLES

## CP90250 & CP90500

### HIGH DURABILITY

- Batteryless with 1 Million cycles life time;
- 5 years warranty

## 5 YEAR WARRANTY

### DOUBLE POLARITY PROTECTION

- Buzzer to prevent polarity inversion and fuse to protect booster and car.

### FAST CHARGING

- 30 seconds on running engine;
- 6 hour with DC adaptor included (1).

### HIGH QUALITY

- Large copper clamps and 50 mm<sup>2</sup> / 0.48 in<sup>2</sup> cables (500 Farads model).



### EASY TRANSPORTATION

- Lightweight and comfortable large handle.

### EASY TO USE

- Easy reading capacitor charge information with LED light.

### CONVENIENT

- Cable reel plus clamp holder for better storage;
- 43.6 in. / 110 cm length cable for better access.

### VERSATILE

- All type of engines powered by 12V.

### ULTRACAPACITOR TECHNOLOGY

Car starters demand high power to run engines. A 2L diesel engine demands around 700A. Chicago Pneumatic capacitor can deliver 8000A.

MODEL	PART NUMBER	CAPACITY		SHORT CIRCUIT CURRENT AP	STARTING CURRENT A	POLARITY INVERSION ALARM	PROTECTION FUSE	CHARGE ON		CABLE LENGTH		CABLE SECTION		WEIGHT		LENGTH	
		Farad	Ah					Sector	Engine	m	ft	mm <sup>2</sup>	in. <sup>2</sup>	kg	lb	mm	in
CP90250	894 109 0250	250		8000	1300	yes	yes	yes	yes	1.1	3.6	50	2	8.8	19.4	370	14.6
CP90500	894 109 0500	500		9000	1800	yes	yes	yes	yes	1.1	3.6	50	2	9.7	21.4	370	14.6





# ACCESSORIES

## TROLLEY JACKS



### PADS

FOR MODEL	DESCRIPTION	PART
CP80015 & CP80020	Saddle	895 031 1503
CP80015 & CP80020	Rubber pad set	895 031 0421
CP80030	Saddle kit	895 031 1852

### METAL WHEELS

FOR MODEL	DESCRIPTION	PART
CP80020 & CP80021	Front wheel kit	894 017 3311
CP80020 & CP80021	Back wheel kit	894 017 3313
CP80030 & CP80031	Front wheel kit	894 017 3312
CP80030 & CP80031	Back wheel kit	894 017 3314

## BALLOON JACKS



### EXTENSIONS

FOR MODEL	DESCRIPTION	PART NUMBER
CP88221 & CP88222	Extension 3.15"/80mm	895 031 2038
CP88232	Extension 2.36"/60mm mm	895 031 2081

## AIR HYDRAULIC JACKS



### EXTENSIONS

FOR MODEL	DIMENSIONS		PART NUMBER
	HEIGHT		
	mm	in	
CP85030 & CP85050	1.77	45	894 017 4093
CP85030 & CP85050	2.95	75	894 017 4105
CP85080 & CP85100	1.7	45	894 017 4271
CP85080 & CP85100	2.95	75	894 017 4272

## PRESSES



### PRESS PUNCHES

DESCRIPTION	PART NUMBER
Press punch Ø 0.39"/10mm	895 500 0048
Press punch Ø 0.47"/12mm	895 500 0047
Press punch Ø 0.63"/16mm	895 500 0042
Press punch Ø 0.71"/18mm	895 500 0041
Press punch Ø 0.79"/20mm	895 500 0043
Press punch Ø 0.87"/22mm	895 500 0044
Press punch Ø 1"/25mm	895 500 0045
Press punch Ø 1.18"/30mm	895 500 0046
Plate	895 500 0049
Quick exchange chuck	895 500 0039
Frame body	895 500 0040

DESCRIPTION	PART NUMBER
Set of press punches	895 500 0050

### PROTECTION CAGE

FOR MODEL	PART NUMBER
CP86100	894 017 3459
CP86151	894 017 3207
CP86201	894 017 3208
CP86301	894 017 3209
CP86501	894 017 3210
CP86750	894 017 3458

