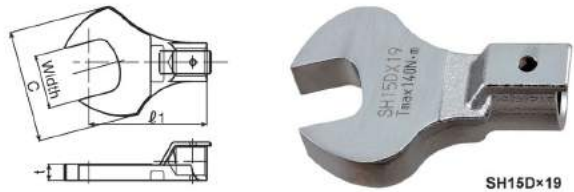


# Interchangeable Head

## SH Open Spanner Head

RoHS

The SH type spanner heads suit for the place where sockets can not be used, for flare nuts in piping and for work in narrow places.



Tohnichi Head Size	Model (Body Size x Width)	Allowable Torque		Outside Width C (mm)	Thickness t (mm)	
		[N·m]	[kgf·cm]			
8D	SH8Dx5.5	1.5	15	13	3	
	SH8Dx6	2.5	25	15	3.5	
	SH8Dx7	3.5	35	17	4	
	SH8Dx8	7	70	20	4.5	
	SH8Dx10	14	140	25		
	SH8Dx11			27	5.5	
	SH8Dx12					
	SH8Dx13			29		
	SH8Dx14					
	SH8Dx16			31		
10D	SH8Dx17	15	150	32		
	SH8Dx19			35	6.5	
	SH8Dx21			36		
	SH8Dx22			37		
	SH8Dx24			38		
	SH10Dx7					
	SH10Dx8					
	SH10Dx10	20	200	28		
12D	SH10Dx11					
	SH10Dx12					
	SH10Dx13			32		
	SH10Dx14				6.5	
	SH10Dx16					
	SH10Dx17					
	SH10Dx18	25	250			
	SH10Dx19			39		
	SH10Dx21					
	SH10Dx22					
15D	SH10Dx24			43		
	SH12Dx8	7	70	20	5	
	SH12Dx10	12	120	24		
	SH12Dx11	20.5	205	28	5.5	
	SH12Dx12			31	6.5	
	SH12Dx13	29.5	295	32		
	SH12Dx14			38	8	
	SH12Dx16	59	590		10	
	SH12Dx17			40		
	SH12Dx18				11	
12D	SH12Dx19			41		
	SH12Dx21	70	700			
	SH12Dx22			43		
	SH12Dx24			48	13	
	SH12Dx27			52		
	15D	SH15Dx12				
		SH15Dx13	59	590	38	8
		SH15Dx14				
		SH15Dx16				
		SH15Dx17				
SH15Dx18						
SH15Dx19		140	1400	51	13	
SH15Dx21						
SH15Dx22						

Tohnichi Head Size	Model (Body Size x Width)	Allowable Torque		Outside Width C (mm)	Thickness t (mm)
		[N·m]	[kgf·cm]		
15D	SH15Dx24				
	SH15Dx26				
	SH15Dx27	140	1400	60	12
	SH15Dx30				
	SH15Dx32				
	SH15Dx36				68
19D	SH19Dx17				
	SH19Dx18	200	2000		
	SH19Dx19			54	13
	SH19Dx21	180	1800		
	SH19Dx22				
	SH19Dx24	200	2000	60	15
22D	SH19Dx27				
	SH19Dx30	180	1800		
	SH19Dx32				
	SH19Dx34	200	2000	76	11
	SH19Dx36				
	SH19Dx41	180	1800		
	SH22Dx19	280	2800	63	
	SH22Dx22				
	SH22Dx24	500	5000		
	SH22Dx27				
27D	SH22Dx30	420	4200	78	
	SH22Dx32				15
	SH22Dx34	500	5000		
	SH22Dx36	420	4200		
	SH22Dx41			85	
	SH22Dx46	280	2800		
	SH22Dx50	500	5000	103	
	SH22Dx55			108	
	SH27Dx22	255	2550	65	14
	SH27Dx24	350	3500	72	15
32D	SH27Dx27	490	4900	82	16
	SH27Dx30	670	6700	88	19
	SH27Dx32	750	7500	92	
	SH27Dx34	670	6700	90	20
	SH27Dx36			94	21
	SH27Dx41	750	7500	98	22
	SH27Dx46			100	24
	SH27Dx50			103	26
	SH32Dx27				
	SH32Dx30	850	8500	105	18
SH32Dx32					
SH32Dx34					
SH32Dx36					
SH32Dx41			110	24	
SH32Dx46					
SH32Dx50	1200	12000			
SH32Dx55			120	29	
SH32Dx60					

## Inch Size Models

Commonly used in the airline industry and for specific American product installation and maintenance.

Tohnichi Head Size	Model (Body Size x Inner Width [in])	Inner Width [mm]	Allowable Torque N·m [lbf·in]	Outside Width C [mm [in]]	Thickness t [mm [in]]
8D	SH8Dx1/4	6.35	2.5 [22]	15 [0.59]	3.5 [0.14]
	SH8Dx5/16	7.94	7 [61]	20 [0.79]	4.5 [0.18]
	SH8Dx3/8	9.53	14 [123]	25 [0.98]	
	SH8Dx7/16	11.11		27 [1.06]	5.5 [0.22]
	SH8Dx1/2	12.7	15 [132]		
	SH8Dx9/16	14.29		29 [1.14]	6.5 [0.26]
10D	SH10Dx1/4	6.35			
	SH10Dx5/16	7.94	20 [177]	28 [1.10]	
	SH10Dx3/8	9.53			6.5 [0.26]
	SH10Dx7/16	11.11		32 [1.26]	
	SH10Dx1/2	12.7	25 [221]		
	SH10Dx9/16	14.29		39 [1.54]	
12D	SH12Dx3/8	9.53	12 [106]	24 [0.94]	5 [0.20]
	SH12Dx7/16	11.11	20.5 [181]	31 [1.22]	
	SH12Dx1/2	12.7	29.5 [261]	32 [1.26]	6.5 [0.26]
	SH12Dx9/16	14.29		40 [1.57]	10 [0.39]
	SH12Dx5/8	15.88	59 [522]		
	SH12Dx11/16	17.46	70 [620]	41 [1.61]	11 [0.43]
15D	SH15Dx1/2	12.7		38 [1.50]	8 [0.31]
	SH15Dx9/16	14.29	59 [522]		
	SH15Dx5/8	15.88			
	SH15Dx11/16	17.46		51 [2.01]	13 [0.51]
	SH15Dx3/4	19.05			
	SH15Dx13/16	20.64	140 [1239]		
	SH15Dx7/8	22.23			
	SH15Dx15/16	23.81			
	SH15Dx1	25.40		60 [2.36]	12 [0.47]
	SH15Dx1-1/16	26.99			

Tohnichi Head Size	Model (Body Size x Inner Width [in])	Inner Width [mm]	Allowable Torque N·m [lbf·in]	Outside Width C [mm [in]]	Thickness t [mm [in]]
15D	SH15Dx1-1/8	28.58			
	SH15Dx1-3/16	30.16		60 [2.36]	
	SH15Dx1-1/4	31.75			
	SH15Dx1-5/16	33.34	140 [1239]		12 [0.47]
	SH15Dx1-3/8	34.93		66 [2.59]	
	SH15Dx1-7/16	36.51			
19D	SH15Dx1-1/2	38.10		69 [2.72]	
	SH19Dx15/16	23.81			
	SH19Dx1	25.4		60 [2.36]	15 [0.59]
	SH19Dx1-1/16	26.99			
	SH19Dx1-1/8	28.58			
	SH19Dx1-3/16	30.16	200 [1947]		72 [2.83]
19D	SH19Dx1-1/4	31.75			
	SH19Dx1-5/16	33.34			11 [0.43]
	SH19Dx1-3/8	34.93		76 [2.99]	
	SH19Dx1-7/16	36.51			
	SH19Dx1-1/2	38.1			

**The Relationship between Interchangeable Heads and Torque Wrenches**

Tohnichi's interchangeable head wrenches have specific diameter round ends that fit into corresponding head base openings. Head and wrench model names include the diameter sizes so heads can be matched to wrenches that will accept those heads.

For example: SH15D×17 will fit on CL100N×15D

A variety of different head types (SH, RH, QH, RQH, FH, DH, AH and SH-N) can be used on one wrench or different types of wrenches such as CL (for tightening) and CEM3 (for inspection) can use the same head that has the corresponding diameter size.

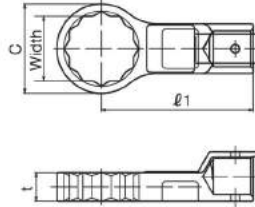


**RH Ring Head**

RoHS

The RH type ring heads guarantee the safe work as the axes of bolt and RH ring head are always aligned and prevent the heads will drop.

Note: RH8D×5.5 to RH8D×7 are hex shape.



RH15D×17

Tohnichi Head Size	Model (Body Size × Width)	Allowable Torque		Outside Width C [mm]	Thickness t [mm]
		[N·m]	[kgf·cm]		
8D	RH8D×5.5	1.5	15	10.5	5
	RH8D×6	2.4	24	11	5
	RH8D×7	3.6	36	12	6
	RH8D×8	7.2	72	13.5	6
	RH8D×10	12.2	122	15.5	6
	RH8D×11			17	7
	RH8D×12	15	140	18	7
	RH8D×13			19	
10D	RH10D×8	7.2	72	12.5	6
	RH10D×10	12.2	122	15.5	7
	RH10D×11	20	200	17	
	RH10D×12			18	
	RH10D×13			19	
	RH10D×14			20	
	RH10D×16			22	
	RH10D×17	25	250	24	8
	RH10D×18			25	
	RH10D×19			26	
12D	RH12D×8	7.2	72	15	5
	RH12D×10	12.2	122	16	5
	RH12D×11	20	200	18	5.5
	RH12D×12			20	6.5
	RH12D×13	29.5	295	21	
	RH12D×14			20	10
	RH12D×16	59	590	24	
	RH12D×17			25	
	RH12D×18			26	12
	RH12D×19	70	700	26	
15D	RH15D×12			29	13
	RH15D×13			30	
	RH15D×12	29.5	295	19	7
	RH15D×13			22	
	RH15D×14			25	8
	RH15D×16	59	590	25	
	RH15D×17			26	10
	RH15D×18	100	1000	26	
	RH15D×19			28	
	RH15D×21			31	
15D	RH15D×22			34	13
	RH15D×24	140	1400	34	
	RH15D×27			37	
	RH15D×30			41	

Tohnichi Head Size	Model (Body Size × Width)	Allowable Torque		Outside Width C [mm]	Thickness t [mm]	
		[N·m]	[kgf·cm]			
19D	RH19D×14	59	590	22.5	8	
	RH19D×17			27	10	
	RH19D×18	100	1000	28	11	
	RH19D×19			29		
	RH19D×21	166	1660		13	
	RH19D×22			32		
	RH19D×24			35		
19D	RH19D×27			39		
	RH19D×30			41		
	RH19D×32	200	2000	44	15	
	RH19D×34			47		
	RH19D×36			49		
	RH19D×41			55		
	22D	RH22D×19	166	1660	30	14
RH22D×22				34		
RH22D×24		255	2550	37	15	
RH22D×27		490	4900	41		
RH22D×30				44		
22D	RH22D×32			45		
	RH22D×34			49	17	
	RH22D×36	500	5000	51		
	RH22D×41			57		
	RH22D×46			62		
27D	RH27D×22	255	2550	38	14	
	RH27D×24	350	3500		15	
	RH27D×27	490	4900	42	16	
	RH27D×30	670	6700	46	19	
	RH27D×32	750	7500	48		
	RH27D×34	670	6700	51	20	
	RH27D×36			52	21	
27D	RH27D×41			58	22	
	RH27D×46	750	7500	64	24	
	RH27D×50			69	26	
	32D	RH32D×27	490	4900	43	16
		RH32D×30	670	6700	46.5	
RH32D×32				49	18	
RH32D×34		860	8600	52		
RH32D×36				53		
RH32D×41				59	24	
32D	RH32D×46			65		
	RH32D×50	1200	12000	69	27	
	RH32D×55			75		
	RH32D×60			80	29	

**Inch Size Models**

Commonly used in the airline industry and for specific American product installation and maintenance.

Tohnichi Head Size	Model (Body Size × Inner Width [in])	Inner Width [mm]	Allowable Torque		Outside Width C [mm]	Thickness t [mm]
			N·m [lbf·in]	mm [in]		
8D	RH8D×1/4	6.35	3.6 [31]	11 [0.43]	5 [0.20]	
	RH8D×5/16	7.94	7.2 [63]	13.5 [0.53]	6 [0.24]	
	RH8D×3/8	9.53	12.2 [108]	15 [0.59]	7 [0.28]	
	RH8D×7/16	11.11	15 [132]	17 [0.67]		
10D	RH10D×1/4	6.35		11 [0.43]		
	RH10D×5/16	7.94	7.2 [64]	12.5 [0.49]	6 [0.24]	
	RH10D×3/8	9.53	12.2 [108]	15.5 [0.61]	7 [0.28]	
	RH10D×7/16	11.11		17 [0.67]		
10D	RH10D×1/2	12.7	25 [221]	19 [0.75]	8 [0.31]	
	RH10D×9/16	14.29		20 [0.79]		
	RH12D×3/8	9.53	12.2 [108]	16 [0.63]	5 [0.20]	
	RH12D×7/16	11.11	20 [177]	18 [0.71]	5.5 [0.22]	
12D	RH12D×1/2	12.7	29.5 [261]	21 [0.83]	6.5 [0.26]	
	RH12D×9/16	14.29		20 [0.79]		
	RH12D×5/8	15.88	59 [522]	24 [0.94]	10 [0.39]	

Tohnichi Head Size	Model (Body Size × Inner Width [in])	Inner Width [mm]	Allowable Torque		Outside Width C [mm]	Thickness t [mm]
			N·m [lbf·in]	mm [in]		
15D	RH15D×1/2	12.7	29.5 [261]	19 [0.81]	7 [0.28]	
	RH15D×9/16	14.29		22 [0.87]		
15D	RH15D×5/8	15.88	59 [522]	25 [0.98]	8 [0.31]	
	RH15D×11/16	17.46	100 [885]	26 [1.06]	10 [0.39]	
	RH15D×3/4	19.05	140 [1239]	28 [1.10]	13 [0.51]	

Accessories





**The Relationship between Interchangeable Heads and Torque Wrenches**

Tohnichi's interchangeable head wrenches have specific diameter round ends that fit into corresponding head base openings. Head and wrench model names include the diameter sizes so heads can be matched to wrenches that will accept those heads.  
 For example: SH15D×17 will fit on CL100N×15D  
 A variety of different head types (SH, RH, QH, RQH, FH, DH, AH and SH-N) can be used on one wrench or different types of wrenches such as CL (for tightening) and CEM3 (for inspection) can use the same head that has the corresponding diameter size.



**QH Ratchet Head** RoHS

QH15D

As the QH type ratchet heads need only small swing for tightening, they suit for operations in narrow spaces.

Head Size	Model	Dimensions			
		Sq. Drive a [mm]	Outside Width c [mm]	h [mm]	b [mm]
8D	QH8D	6.35	23	17.5	7.5
10D	QH10D-1/4	9.53	26	18.5	11
	QH10D			22	
12D	QH12D	12.7	32	25.6	11
	QH15D-3/8			30.5	
15D	QH15D	15.4	37.5	33.5	14
	QH19D			38.4	
22D	QH22D-1/2	19.05	51	41.5	20.5
	QH22D			46.5	
27D	QH27D	25.4	74	49.7	21.5
	QH32D			55.7	

**Note**

1. For the model having 25.4mm square drive, use a through-hole socket. QH15D-3/8 Tmax 100N·m, QH22D-1/2 Tmax 280N·m
2. Ratchet protective cover is available. Refer to page 45.

**DH Square Drive Head** RoHS

DH15D

The DH square drive heads are the standard interchangeable head. They are useful when tightening a large number of matching screws with a common torque wrench. It is recommended to keep one set. They are used with sockets.

Head Size	Model	Dimensions			
		Sq. Drive a [mm]	Outside Width c [mm]	h [mm]	b [mm]
10D	DH10D	9.53	18	22.5	13
12D	DH12D	12.7	22	23	16.5
15D	DH15D			29.5	
19D	DH19D	19.05	24	34	23.5
22D	DH22D			43.3	
27D	DH27D	25.4	50	42	30.25
32D	DH32D			58.5	

**Note** DH32D is a through hole type.

**RQH Female Ratchet Head** RoHS

RQH15D×17

As the RQH type ratchet heads need only small swing for tightening, they suit for operations in narrow and low ceiling spaces.

Head Size	Model (Body Size × Width)	Dimensions			
		D [mm]	Outside Width C [mm]	H [mm]	h [mm]
12D	RQH12D×12	20.5	32	24.1	10
	RQH12D×14				
	RQH15D×14				
15D	RQH15D×17	24.5	37.5	29	10
	RQH19D×17				
19D	RQH19D×19	31	45	28	10
	RQH19D×22				
	RQH22D×22				
22D	RQH22D×24	35.2	51	35	10
	RQH22D×24				

**HH Hex Head** RoHS

HH10D×6

HH hex-head is for hexagon socket head bolts. A hex key can be inserted.

Hex key (Sold separately)

The HH hex-head is for hex, socket head cap screws.

Head Size	Model (Body Size × Width)	Dimensions			
		Outside Width C [mm]	t [mm]	m [mm]	φD2 b [mm]
8D	HH8D	12	14.5	-	-
	HH10D×5	11	8	-	-
10D	HH10D×6	12	8	-	-
	HH10D×8	15	8	-	-
	HH12D×5	11	10	19	7
12D	HH12D×6	14	10	-	-
	HH12D×8	15	10	-	-
	HH12D×10	17	10	-	-
15D	HH15D×8	14	13	21	-
	HH15D×10	17	13	21	-
	HH15D×12	20	13	21	-
19D	HH15D×14	21.5	13	21	-
	HH19D×10	17	13	8.5	-
	HH19D×12	21.5	13	8.5	-
19D	HH19D×14	23	13	23	-
	HH19D×17	27	13	23	-
	HH19D×19	29	13	23	-
22D	HH22D×12	19.5	17	26	10
	HH22D×14	27	17	26	10
	HH22D×17	30	17	26	10
22D	HH22D×19	32	17	26	10
	HH22D×22	35	17	26	10

**Note**

1. To be used with hex. key inserted.
2. HH8D is not used with hex. key but interchangeable bit.
3. Insertion of HH10D×5 and HH10D×6 are hexagon. Others are double hexagon.

HH8D

Bits are sold separately. Refer to page 10.

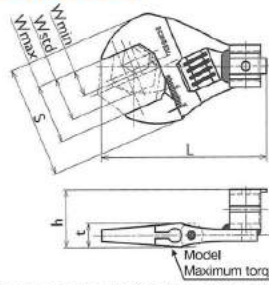
**Ratchet Protective Cover for QH/RQH**

Fit on your Tohnichi Ratchet Head to protect your work

Part #	Applicable Interchangeable Head
870	QH8D
871	QH10D
872	QH12D/RQH12D
874	QH15D/RQH15D
875	QH19D
876	RQH19D
878	QH22D/RQH22D

Accessories

## AH/AH2 Adjustable Open End Head RoHS



AH15D2x30

AH is easy and convenient to use for applications that require different size bolt heads. Available currently only for the 15mm diameter root shaped Tohnichi torque wrenches.

Head Size	Model (Body Size x Width)	Allowable Torque		Inner Width Min.-Standard- Max.[mm]	Dimensions			
		[N·m]	[kgf·cm]		S [mm]	L [mm]	t [mm]	h [mm]
10D	AH10Dx13	25	250	3-8-13	36	57	9	23
	AH10Dx26			7-17-26	49	62	11	25
	AH12Dx13	30	300	3-8-13	36	66	9	23
12D	AH12Dx26			7-17-26	49	71	11	26
	AH12Dx36	50	500	8-22-36	65	78	13	27
	AH15D2x26			10-18-26	50	77	11	31
15D	AH15D2x30	100	1000	13-22-30	60	84	12	32
	AH15D2x36	140	1400	13-24-36	65	87	13	33

Note Use with a click type torque wrench.

## PH Pipe Wrench Head RoHS



PH15Dx350

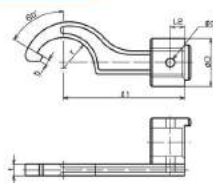
The PH heads suit for use with pipes and plumbing applications.

Head Size	Model (Body Size x Width)	Pipe Wrench Head Max. Length [mm]	Applicable Pipe Diameter [mm]	Standard Pipe Diameter [mm]	Recommendable Torque Wrench
15D	PH15Dx350				
19D	PH19Dx350	350	13-38	25.5	CSP
22D	PH22Dx350				
	PH22Dx450	450	26-52	39	

Note

- PH can be used with CSP model (P.16) only.
- When ordering with CSP, please specify PH model name and required set torque.
- In case of using graduated torque wrench, order PHL models.

## FH Hook Head RoHS

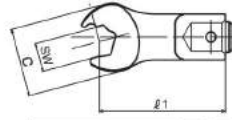


FH

The FH hook heads are ideal for use with bearing locknut applications.

Head Size	Model (Body Size x Width)	Applicable Size of Nut Outside Diameter [mm]	Nominal Size of Screw	Dimensions									
				r [mm]	O' [mm]	b [mm]	t [mm]	H [mm]	D [mm]	L2 [mm]	d [mm]		
15D	FH15Dx30	30-38	M20	16									
	FH15Dx38	38-45	M25	20									
	FH15Dx45	45-52	M30	24									
	FH15Dx52	52-58	M35	27	90								
19D	FH15Dx58	58-65	M40	31									
	FH19Dx65	65-75	M45, M50	35.5									
22D	FH22Dx75	75-85	M60, M65	39									
	FH22Dx85	85-98	M70, M75	45.5	45								

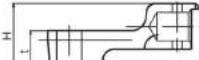
## SH-N Open End Head with Notch RoHS



SH-N models (except for SH10D-5x10N)



SH10D-1x10N



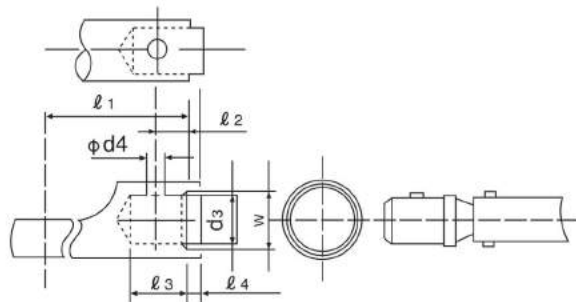
SH10D-5x10N

The notch creates speed in the tightening process by grasping the side of the fastener without removing the wrench. Ideal for brake line assembly.

Head Size	Model (Body Size x Width)	Allowable Torque		Dimensions			
		[N·m]	[kgf·cm]	Outside Width C [mm]	Thickness H [mm]	Thickness l [mm]	Thickness h [mm]
10D	SH10D-1x10N	22.5	225		18.75	12	6
	SH10D-3x10N				20.25		7.5
	SH10D-5x10N	19	190	24	24.5	15	-
	SH10D-4x10N				17.75		5
	SH10D-9x10N	22.5	225		18.75	10	
	SH10Dx11N				18.8	12	6
	SH10Dx12N	25	250	32	16	6.5	3.25
	SH12Dx11N				30	19	7.5
	SH12D-1x12N				21	12	6
	SH12D-3x12N	30	300	32	22.5	15	7.5
12D	SH12D-5x12N				26		-
	SH12D-4x12N				20	10	5
	SH12D-1x14N				21	12	6
	SH12D-3x14N	40	400	35	22.5	15	7.5
	SH12D-5x14N				26		-
	SH12D-4x14N				20	10	5
	SH12D-1x17N				21	12	6
	SH12D-3x17N	50	500	38	22.5	15	7.5
	SH12D-5x17N				26		-
	SH12D-4x17N				20	10	5

## Common Dimensions for Interchangeable Head

Model	Dimensions [mm]						
	l1	l2	l3	l4	d3	d4	W
SH8D, RH, QH, HH	35	4	10	2	8	3.0	9
SH10D, RH, QH, HH, DH, SH-N	44	5	12	2.5	10	3.5	12
SH12D, RH, QH, HH, DH, RQH	53	6	14	3	12	3.5	14
SH15D, RH, QH, HH, DH, RQH, FH	63	7.5	17	3	15	4.5	17
SH19D, RH, QH, HH, DH, RQH, FH	80	9.5	21	3	19	4.5	21
SH22D, RH, QH, HH, DH, RQH, FH	100	11	24	3.5	22	5.5	24
SH27D, RH, QH, DH	125	13.5	29	5	27	6.5	30
SH32D, RH, QH, DH	160	16	34	7	32	6.5	35



Note When requesting a special head that is used with various types of torque wrench, it is strictly required to follow the "l1" dimension to keep torque accuracy. Any deviation from the "l1" dimension affects torque accuracy.





# Auxiliary Equipment

To facilitate effective and convenient use of Tohnichi products, a number of auxiliary parts and special tools are available (Some torque tools are provided with the necessary auxiliary parts). We are ready to manufacture custom-made parts and tools to meet your requirements.

## For Torque Wrench

### QH/QL/PQL/QSP PROTECTIVE HEAD COVER

Fit on your Tohnichi Ratchet Head to protect your work



Part #	Applicable Interchangeable Head & Model
870	QH8D QL-PQL2N-15N/-MH, QSP1.5N4-12N4
871	QH10D QL-PQL-QSP25N/-MH
872	QH12D/RQH12D QL-PQL-QSP50N/-MH
873	- QL-PQL-QSP100N4/-MH
874	QH15D/RQH15D QL-PQL-QSP140N/-MH
875	QH19D QL-PQL-QSP200N4/-MH
876	RQH19D -
877	- QL-PQL-QSP280N4/-MH
878	QH22D/RQH22D QL-PQL-QSP420N

### TiQLE ADJUSTING TOOL FOR TiQLE

For previous large QLE and current TiQLE models



Part #	Applicable Model
301	TiQLE750N-TiQLE1400N

### SP THRUSTING TOOL FOR SP

This tool is used to set the torque of preset types SP, RSP, QSP and CSP torque wrenches.



Part #	Tool #	Applicable Model
310	A-1	QSP/CSP1.5N-6N
311	A-2	SP2N-SP19N, QSP/CSP12N, QSP/CSP25N
312	A-3	SP38N, SP67N, QSP/CSP50N-140N
313	A-4	SP120N-SP310N, QSP200N-QSP280N
314	A-5	QSP/CSP420N, BQSP/BCSP400N
315	A-6	SP420N, SP560N

### QSP3 ADJUSTING TOOLS FOR QSP3



Part #	Dimensions [mm]	Applicable Model
931	2.5 × 1.5 × 6	QSP/CSP25N3, QSP1.5N4-12N4 SP2N2-19N2, SP19N2-N BQSP/BCSP10N-20N CSP1.5N4-CSP12N4
930	4 × 2.5 × 8	QSP/CSP50N3-QSP/CSP280N3 SP38N2-N, SP/RSP38N2-310N2 BQSP/BCSP40N-300N MQSP50N-200N, MCSP50N-140N

### DB TOOL SET FOR DB

This set of pliers is used to adjust the torque to dial type torque wrenches and torque checkers.



Part #	Applicable Model
316	DB, DBE, CDB-S, T-S, DOT

### CARRYING CASE



842



846

Part #	Dimensions [mm]	Weight [kg]
842	QL50N/-MH, MTQL40N/70N, QL100N4/-MH, CL50N×12D/-MH, CL50N×15D/-MH, CL100N×15D/-MH H60 × W400 × D70	0.25
843	QL140N/-MH, MTQL140N, QL200N4/-MH, CL140N×15D/-MH, CL200N×19D/-MH H60 × W520 × D80	0.36
846	QL140N/-MH and below, MTQL and below, CL200N×19D/-MH and below H170 × W500 × D100	1.0
847	QL280N/-MH and below, CL280N×22D/-MH and below H170 × W740 × D100	1.6

## For Torque Screwdriver

### LTD, RTD ADJUSTING TOOL FOR LTD/RTD

This tool is used to adjust the torque of LTD and RTD torque screwdrivers.



Part #	Applicable Model
51	LTD/RTD15CN, LTD/RTD30CN
46	LTD/RTD60CN
47	LTD/RTD260CN
48	LTD/RTD500CN
49	LTD/RTD1000CN
1046	LTD/RTD120CN

### LTD TIGHTENING TOOL FOR LTD

This tool makes tightening with large LTD much easier.



Part #	Applicable Model
31	LTD/RTD/NTD/RNTD500CN FTD400CN
32	LTD/NTD1000CN FTD8N, FTD16N
40	LTD2000CN

### LTD/RTD/MNTD HOOK SPANNER

This tool makes it easier to set the torque for mid. to large capacity torque screwdrivers.



Part #	Applicable Model
52	LTD/RTD260CN, MNTD120CN
53	LTD/RTD500CN, MNTD260CN
54	LTD1000CN, MNTD500CN
55	LTD2000CN

### NTD/RNTD ADJUSTING BAR FOR NTD/RNTD

This tool is used to set the torque of preset types NTD and RNTD screwdrivers.



Part #	Applicable Model
42	NTD/RNTD15CN-120CN
43	NTD/RNTD260CN, RNTD2260CN
44	NTD/RNTD500CN-1000CN, RNTD2500CN

### TORQUE SCREWDRIVER ADAPTER

This accessory is used with TME2 and TM torque meters to check UNITORK and torque screwdrivers.



Part #	Applicable Model
30	LTD/RTD/NTD/RNTD FTD50CN-FTD400CN

### Lubricant for repairing torque products EVERTORQUE

Model	Part #
EVERTORQUE	830



RoHS

### Applicable Models and Parts

	Applicable Model	Applicable Part
Click Type Torque Wrench	QL, QLE2, CL, CLE2, PQL, PCL, YCL etc.	Thrusting; Steel Ball Scale Piece, Adjusting Screw; Thread
	WQL	Thrusting; Steel Ball Scale Piece, Adjusting Screw; Thread Screw Knob, Protector; Joint
Click Type Torque Screwdriver	MPQL	Thrusting; Steel Ball Scale Piece, Adjusting Screw; Thread Ratchet, Marker Pipe; Joint
	RTD, RNTD RTD, LTD, BMLD	Main Shaft, Toggle Sheet; Serration Case, Adjusting Piece; Thread

# Connecting Cable

\* The cable length is 2m.

## ■ EPP16M3 Printer Connecting Cable

Part #	Applicable Model	Figure		Plug
383	DOT4-G (P.51), TDT3-G (P.53), LC3-G (P.54), TME2 (P.57), CD5 (P.63)			D-SUB 9 Pin Female
575	CTA2-G (P.23), CEM3-G/CEM3-P (P.35), CTB2-G (P.36), R-DT999 (P.63)			D-SUB 9 Pin Female

## ■ PC Connecting Cable

Part #	Applicable Model	Figure		Plug
575	CTA2-G (P.23), CEM3-G/CEM3-P (P.35), CTB2-G (P.36), R-DT999 (P.63)			D-SUB 9 Pin Female
584	CTA2-G (P.23), CEM3-G/CEM3-P (P.35), CTB2-G (P.36), R-DT999 (P.63)			USB A type
585	CPT-G (P.22)			D-SUB 9 Pin Female
383	DOT4-G (P.51), TDT3-G (P.53), LC3-G (P.54), TME2 (P.57), CD5 (P.63)			D-SUB 9 Pin Female
384	STC2-G (P.9), ST3-G (P.54), ATGE-G (P.55), BTGE-G (P.56)			USB A type
385	DOT4-G (P.51), TDT3-G (P.53), LC3-G (P.54)			USB A type

# Quick Charger, Battery Pack, AC Adapter

## ■ Quick Charger

Model	Applicable Model	Figure
<b>RoHS</b> BC-3-G	CEM3-G/CEM3-P (P.35), CTA2-G (P.23), CTB2-G (P.36) (100-240V)	
<b>RoHS</b> BC-4-2	ST3-G (P.54)	

## ■ Battery Pack

Model	Applicable Model	Figure
<b>RoHS</b> BP-5	CTA2-G (P.23), CEM3-G/CEM3-P (P.35), CTB2-G (P.36)	
<b>RoHS</b> BP-7	STC2-G (P.9)	
<b>RoHS</b> BP-100-4	DOT4-G (P.51), TDT3-G (P.53), LC3-G (P.54), TME2 (P.57), CD5 (P.63)	

## ■ AC Adapter

Model	Applicable Model	Figure
<b>RoHS</b> BA-6	DOT4-G (P.51), TDT3-G (P.53), LC3-G (P.54), CD5 (P.63)	
<b>RoHS</b> BA-5	ATGE-G (P.55), BTGE-G (P.56)	
<b>RoHS</b> BA-8	R-BT (P.48), R-BLA (P.30), R-BLE (P.30)	

Model	Applicable Model	Figure
<b>RoHS</b> BA-4	TME2 (P.57)	
<b>RoHS</b> BA-7	STC2-G (P.9)	

