



# Cislin®

THIS IS A PESTICIDE ADVERTISEMENT  
TO BE HANDLED BY TRAINED PERSONNEL ONLY.

### DIRECTION FOR USE:

PLACES / SITUATION	PESTS	USAGE RATE PER 1 LITRE WATER	SPRAY VOLUME PER M <sup>2</sup>	REMARKS
Public health: kitchen, cabinet, floor, walls, under the sink, corners, cracks and crevices.	Flies ( <i>Musca domestica</i> )  Cockroaches ( <i>Periplaneta americana</i> ; <i>Blattella germanica</i> )	5 ml (1 : 200)	50 ml	Effective period is 2 months.

USAGE	PEST	TREATMENT	USAGE RATE		REMARK
			DILUTION RATE	APPLICATION RATE	
Wood Treatment	Furniture Beetle ( <i>Lyctus</i> sp. or <i>Xyleborus</i> sp.)  Termite ( <i>Cryptotermes</i> sp.; <i>Reticulitermes</i> sp.)	Residual Spray	5 ml / litre diesel (1:200)	100 ml / m <sup>2</sup>	Efficacy Residual <b>3-6 months</b>
		Dyeing	20 ml / 10 litre water (1:500)	-	Wood cut into pieces must be soaked with chemical solution inside the dyeing drum for 3 minutes. Efficacy Residual is 3 years.



## An effective pyrethroid spray to control your pest problems combining effective knockdown and kill



x 1.25  
Cockroaches  
(*Blattella germanica*)

For more information please contact:

**Bayer Co. (Malaysia) Sdn Bhd** (7563 M)  
B-19-1 & B-19-2, The Ascent Paradigm,  
No. 1, Jalan SS 7/26A, Kelana Jaya,  
47301 Petaling Jaya, Selangor, Malaysia.  
Tel.: 03-7801 3121 Fax: 03-7886 3993  
Email: es.malaysia@bayer.com

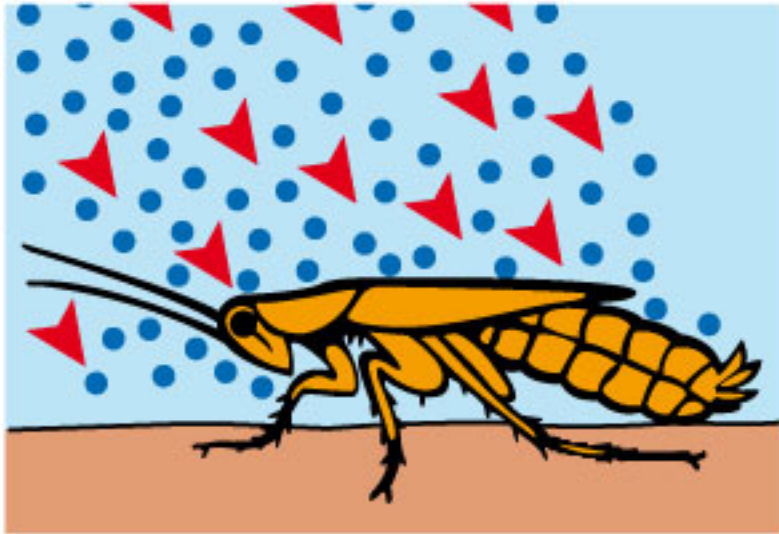
**READ THE LABEL BEFORE USE**

JIRP. E/0217/066



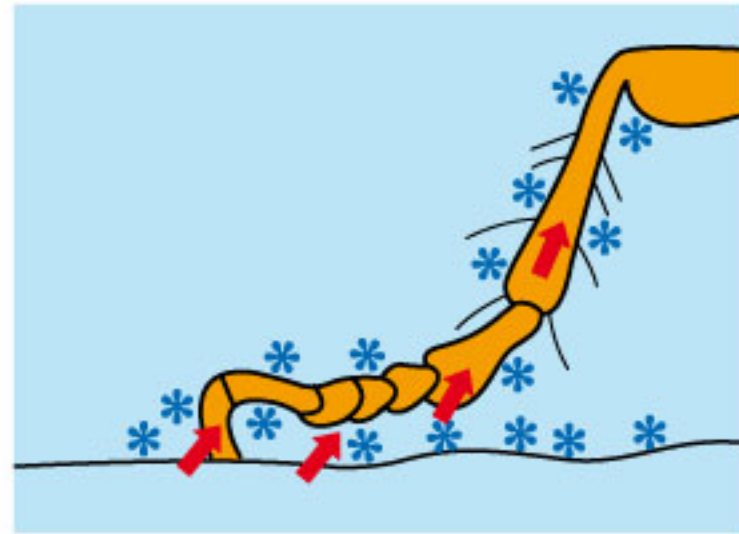


## Effective Residual spray combining effective 'flush-out', knockdown and kill



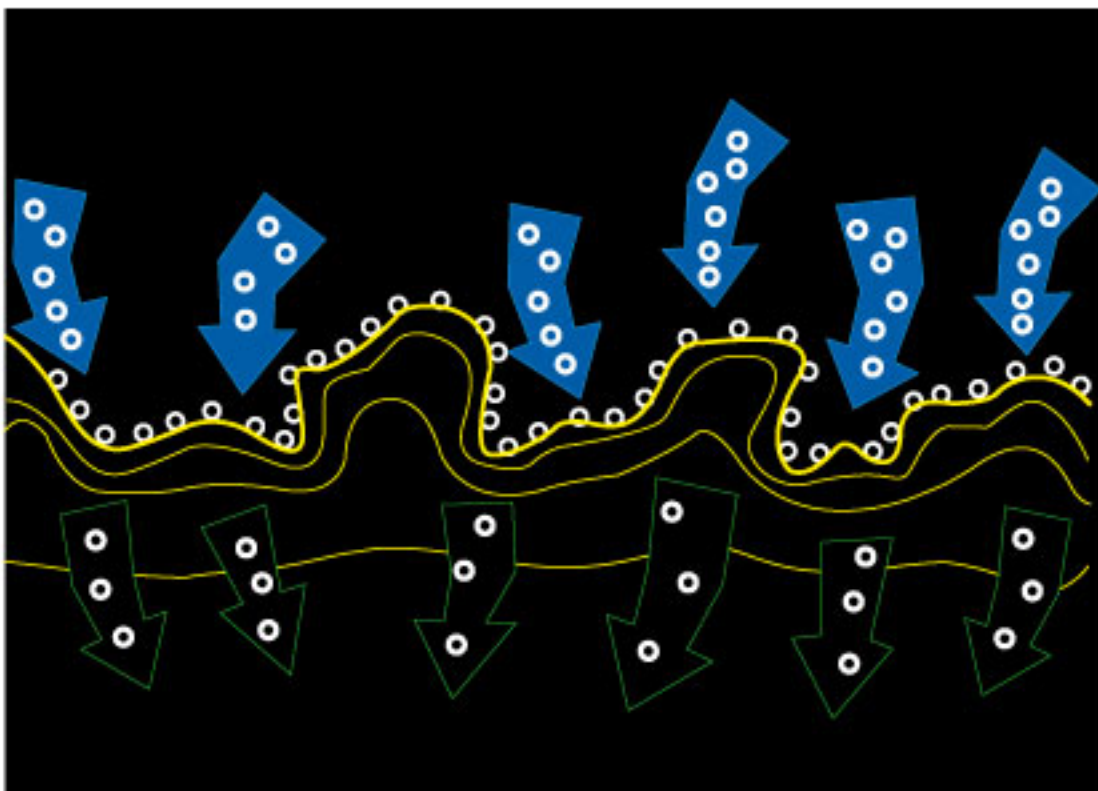
**Cislin has effective knockdown and 'flushing-out' action**

That explains the high level of insecticidal activity. Even if the spray does not reach the pests, they would be irritated by the vapour in the air to leave their hiding places. In so doing, they'll come into contact with the sprayed surfaces and get killed.



**It is photostable**

Depending on the type of surfaces and the extent of infestation, the residual effect could last up to 2 months, provided the surfaces is not cleaned or washed.



### **Cislin is an Emulsifiable Concentrate**

Emulsifiable Concentrate: a solution of active ingredient and surfactants in a water immiscible solvent, which forms a stable emulsion after dilution with water. These emulsions leave few visible deposits on the treated surface; however, diluted emulsifiable concentrates can have a strong smell and are absorbed by porous surfaces.

### **The potent synthetic pyrethroid**

Cislin contains 2.8% w/w deltamethrin that is single isomer.

### **Use as a surface spray...**

		Indoors	Outdoors
Surface Spray (diluted)	Direct Contact	✓	✓
	Residual Spray	✓	✓

See label for full details.



### **Direction for Use and Application Guide**

Dilute Cislin at the rate of 5 ml in 1 liter of clean water. Spray using sprayer fitted with fan nozzle that gives a coarse spray to surfaces at 50 ml per sq meter.