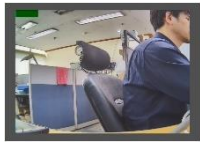


IX-8060-MH – Dual Vision IP Thermal Camera

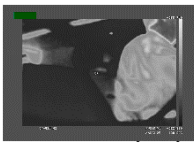


Features

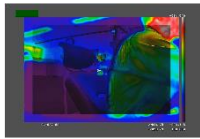
- **1.3 Megapixel + Thermal** Dual Vision Camera
- Mode : Normal / Thermal / **Overlay**
- H.264+ Compression
- **6mm** Fixed Lens
- Network 10/100 Base-T
- Dual Stream
- Upper/Lower Temperature Triggering
- Dedicated Temperature Monitor Software, T-VMS
- Alarm (Relay) out x1
- **Corrosion Resistant** Stainless Steel SUS316L Housing
- POE / 12VC Dual Power



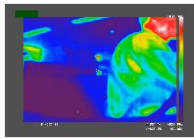
VISUAL



THERMAL (BW)



OVERLAY



THERMAL

SPECIFICATION

Model	IX-8060-MH
Visible Image	1/3.2" progressive scan CMOS Sensor
Resolution	1280x960 @25fps (PAL)/30fps (NTSC)
Shuttle	1/25s ~ 1/100,000s
Thermal Image	80(H) x 60(V) pixels
Spectral Range	LWIR, 8~14 μm
Field of View	Horizontal : 51°, Vertical : 40°
Sensitivity	0.5°C
Network	10/100-BaseT, RJ45
Bit Rate	256Kbps ~ 5Mbps
Compression	2-Stream : H.264 / MJPEG
W. Environment	0° ~+50°C, <90° Humidity (Non-Condensing)
Power	POE IEEE 802.3af /12VDC, Max. 3.9W
Dimension	100 x 165 x 45mm, 2.4kg

