

Dosage Rate & Application



● Spot Treatment

LOCATION	PESTS	DOSAGE PER LITRE	SPRAY VOLUME PER 1M ²
External and internal areas associated with institutions, commercial, storerooms, hospitals, public buildings, offices, private houses and others.	Cockroaches (<i>Blattella germanica</i>)	4.0 g	50 ml
	House Flies (<i>Musca domestica</i>)	4.0 g	50 ml
	Ants (<i>Monomorium pharaonis</i>)	4.0 g	50 ml
	Bed Bugs (<i>Cimex hemipterus</i>)	6.6 g	50 ml
	Fleas (<i>Ctenocephalides felis</i>)	5.0 g	50 ml
	Mites (<i>Dermanyssus gallinae</i>)	5.0 g	50 ml
	Darkling Beetle Larvae (<i>Alphitobius diaperinus</i>)	5.0 g	50 ml

APPLICATION

SECLIRA® SG can be applied using a knapsack sprayer with fan jet nozzle for control of public health pests.

SECLIRA® SG is a soluble granule which is easily mixed and diluted in water and applied as a residual spray. Fill spray tank to ½ full of water. Add the required amount of **SECLIRA® SG** to the spray tank and disperse using mechanical or hydraulic agitation. Add remaining water required for finished dilution.

SECLIRA® SG should be applied by a licensed pest controller only. This brochure is intended as advice.

Registered by:
BASF (MALAYSIA) Sdn. Bhd. (182671-M)
 No. 2, Jalan Astaka U8/87, Bukit Jelutong, Seksyen U8, 40150 Shah Alam,
 Selangor Darul Ehsan, Malaysia Tel.: 03-5628 3888 Faks: 03-5628 3777



© Copyright BASF 2019 © Registered trademark of BASF

READ LABEL BEFORE USE

JIR.P.P/0519/181



TO BE HANDLED BY TRAINED PERSONNEL ONLY.
 THIS IS A PESTICIDE ADVERTISEMENT.

Seclira® SG

Innovative Non-Repellent Solutions



- 3rd Generation Neo-Nicotinoid
- Transfer Effect
- Class IV
- HACCP & EPA Certified

BASF
 We create chemistry

Seclira® SG Insecticide

General insect control product for indoor and outdoor use.

Seclira® SG represents the latest significant innovation in general insecticide technology. **Seclira® SG** has been formulated into Soluble Granules which dissolve totally and remains in suspension ensuring uniformity and consistency of application.

Seclira® SG is formulated with a novel, non-repellent active ingredient, which provides knockdown characteristics exhibiting BASF Genuine Transfer Effect technology and resulting in unmatched performance. **Seclira® SG** is approved for use both inside and outside. It controls pests including house flies, cockroaches, and ants.



Non-Repellent

- Undetectable to insects.
- Does not repel or flush out insects causing unfortunate sightings by customers.
- Does not scatter insects and spread the infestation.
- Able to use with baits for quicker pest control results.

Transfer Effect

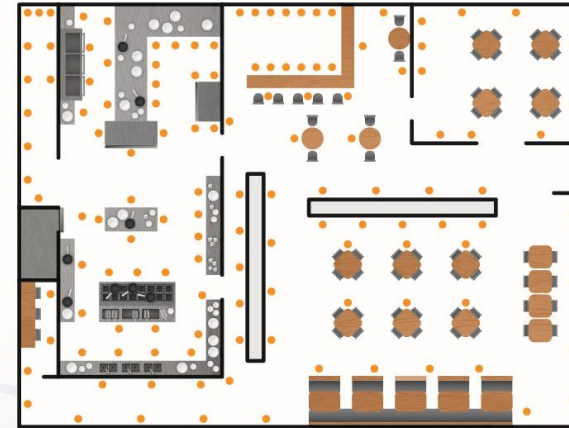
- Transfer effect on social insects such as cockroaches and ants.
- Due to it's non-repellency, insects pick up **Seclira® SG** unknowingly and spread to others.



Targeted Spot Applications

Targeted applications are more efficient than continuous sprays.

Quickly hit areas of interest like gaps, along the edges of walls and underneath equipment and required less finished product.



● Seclira® SG insecticide application

Globally Recognised

Seclira® SG is certified by the EPA (Environmental Protection Agency) and approved by HACCP, an international system for food safety certification.

