

| Order Code | Description |
|---|--------------------------------------|
| <input type="checkbox"/> 200D1 | PosiTector Standard with 200 D Probe |
| <input checked="" type="checkbox"/> 200D3 | PosiTector Advanced with 200 D Probe |

PosiTector²⁰⁰ Coating Thickness Gage

Compare PosiTector Gage Bodies

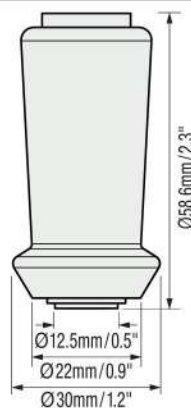
| Features | Standard | Advanced |
|---|-----------------|--------------------------------|
| NEW Larger 2.8" impact resistant color touchscreen with redesigned keypad for quick menu navigation | ● | ● |
| Measure total thickness of a coating system | ● | ● |
| Measure up to 3 individual layer thicknesses in a multi-layer coating system | | ● |
| Graphics mode with screen capture for detailed analysis of the coating system | | ● |
| Statistics Mode—Instantly calculate average, standard deviation, min/max, and number of readings while measuring | ● | ● |
| Two year warranty on body AND probe | ● | ● |
| Reading Storage Capacity | 1,000 per probe | 250,000 in up to 1,000 batches |
| NEW Touchscreen keyboard for quickly renaming batches, adding notes, and more | | ● |
| Connection Options | | |
| USB port for fast, simple connection to a PC and to supply continuous power. USB cable included. | ● | ● |
| WiFi technology wirelessly synchronizes with PosiSoft.net and downloads software updates | | ● |
| Bluetooth 4.0 Technology for data transfer to a mobile device running the PosiTector App or optional portable printer. BLE API available for integration into third-party software. | | ● |



PosiTector 200 D3



Removeable Cabled Probe



Probe Model 200 D

| | |
|--|---|
| Typical Applications: | Thick, soft coatings such as polyurea, asphaltic neoprene, very thick polymers, etc. |
| *Measurement Range: | 50 to 7600 μm 2 to 300 mils |
| Accuracy: | $\pm (20 \mu\text{m} + 3\% \text{ of reading})$ $\pm (1 \text{ mil} + 3\% \text{ of reading})$ |
| **Minimum Individual Layer Thickness: | 500 μm 20 mils |
| Certified Thickness Standard | STDP1 Visit www.defelsko.com/coating-thickness-standards for more details. |

*Range limits apply to polymer based coatings only. 200 D probe polyurea range is 50 to 5000 μm (2 to 200 mils).
**For multiple layer applications only. Dependent on material to be tested.

200 D probe measures coating thickness over concrete, fiberglass, and other non-metal substrates using ultrasonic technology.

| Order Code | Description |
|---|--------------------------------------|
| <input type="checkbox"/> 200D1 | PosiTector Standard with 200 D Probe |
| <input checked="" type="checkbox"/> 200D3 | PosiTector Advanced with 200 D Probe |

All Gages Feature...

Simple

- Ready to measure—no adjustment required for most applications
- **NEW** Larger 2.8" impact resistant color touchscreen with redesigned keypad for quick menu navigation
- **NEW** On-gage help explains menu items at the touch of a button
- RESET feature instantly restores factory settings

Durable

- **NEW** Weatherproof, dustproof, and water-resistant—IP65-rated enclosure
- **NEW** Ergonomic design with durable rubberized grip
- Shock-absorbing protective rubber holster for added impact resistance
- Two year warranty on gage body AND probe

Accurate

- Responsive transducers provide fast, accurate readings
- Certificate of Calibration showing traceability to NIST or PTB included
- Proven non-destructive technique conforms to ASTM D6132 and ISO 2808

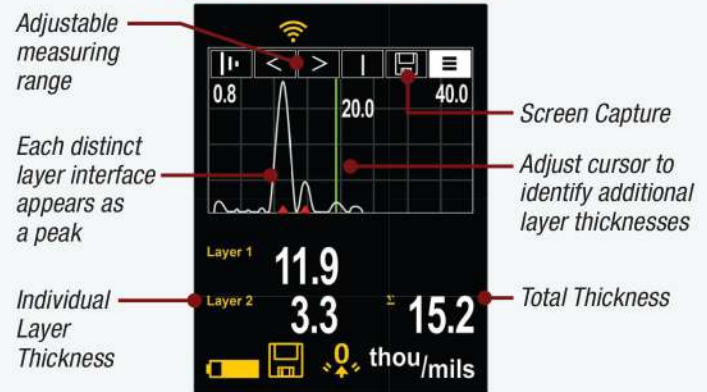
Versatile

- **NEW** Auto rotating display with Flip Lock
- Selectable display languages
- Mil/Microns switchable

Powerful

- Continually displays/updates average, standard deviation, min/max and number of readings while measuring
- Max Thick Mode displays the deepest ultrasonic echo eliminating the need to adjust the Lo Range—ideal for ignoring unwanted surface echoes
- **NEW** Up to 30% longer battery life
- USB port for fast, simple connection to a PC and to supply continuous power. USB cable included.
- Software updates via web keep your gage current
- PosiSoft USB Drive—stored readings and graphs can be accessed using universal PC/Mac web browsers or file explorers. No software required.
- Includes PosiSoft suite of software for viewing and reporting data (see page 3)

Easy-to-read graphic display provides clear, detailed analysis of coatings.



Advanced Models only

Award Winning Compatibility!

PosiTector body accepts all PosiTector 200, 6000, DPM, IRT, RTR, SPG, SST, SHD, BHI, and UTG probes easily converting from a coating thickness gage to a dew point meter, surface profile gage, soluble salt tester, hardness tester, or ultrasonic wall thickness gage.



Comes complete with PosiTector gage body, 200 D probe, couplant (ultrasonic gel), plastic shims or block, protective rubber holster, wrist strap, 3 AAA alkaline batteries, instructions, protective lens shield, convenient carrying case, Long Form Certificate of Calibration traceable to NIST or PTB, USB cable, PosiSoft Software, two (2) year warranty.

***SIZE:** 127 x 66 x 25.4 mm (5" x 2.6" x 1")

***WEIGHT:** 137 g (4.9 oz.) without batteries

CONFORMS TO: ASTM D6132 and ISO 2808

*Size and weight are for the PosiTector gage body only and do not include the probe.

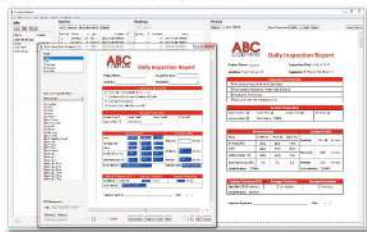
PosiSoft® Suite of Software

Four FREE and unique ways to view and report your PosiTector and PosiTest data

PosiSoft Desktop — PC/Mac

Powerful desktop software for downloading, viewing, printing and archiving measurement data. No internet connection required.

- Import readings directly from the gage via USB or from legacy PosiSoft desktop versions
- Synchronize measurement data including readings, notes and pictures to and from PosiSoft.net
- Import/Export Templates and Jobs to share with other users
- Import PDF forms and overlay **Custom Fields** for automatic population of inspection and measurement data
- Report preview automatically refreshes as changes are made



Prompted Batch Mode

Create pre-defined batches with onscreen text and image prompts for each reading and upload to PosiTector 6000 gages (Advanced models only).

- Ideal for ensuring a consistent measurement pattern for repetitive jobs or when specific measurement locations are required
- Create and store multiple templates for different jobs



PosiTector App — Mobile

Mobile app connects PosiTector Advanced instruments, the PosiTector SmartLink and the PosiTest AT-A to your *iOS* or *Android* smart device.

- Auto pairing Bluetooth BLE connection
- Automatically generate user-formatted reports and share via email, text, cloud storage services like Dropbox, and more
- Export readings to PosiSoft Desktop or synchronize readings to and from PosiSoft.net for further reporting and archival options

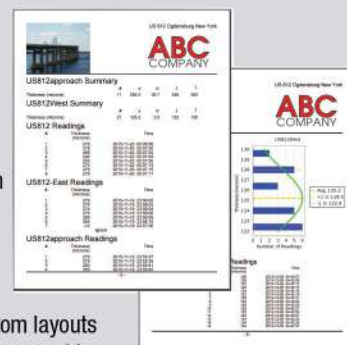


PosiSoft Custom PDF Report Generator

Easily create reports from your measurement data in seconds.

featured on
PosiSoft Desktop
PosiSoft.net
PosiTector App

- Include inspection information such as on-site pictures, screen captures, notes, and more to communicate important details
- Create and save multiple custom layouts as templates—insert cover pages, add logos/images, and select font and point size
- Select the information to include for each product type—charts, histograms, readings, time stamps and more
- Compile multi-batch reports from one or more probes and instrument types
- Export readings as comma separated value (.CSV) files which can easily be imported into Excel and other supporting applications



Jobs feature consolidates batches into groups to keep measurement data organized and to quickly create multi-batch reports (not available on PosiTector App).



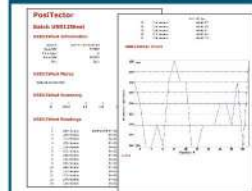
PosiSoft.net — Web based

A web-based application offering secure, centralized management of readings. Access your data from any web-connected device.

- Synchronize data when connected via USB or WiFi
- Synchronize measurement data including readings, notes and pictures with PosiSoft Desktop and PosiTector App
- Securely store measurement data in the cloud and share with authorized users via a secure login



PosiSoft USB Drive — Gage based



A simple gage interface to retrieve data in a manner similar to USB flash drives, cameras, or digital audio players. No software to install or internet connection required.

- View and print readings and graphs using universal PC/Mac web browsers and file explorers
- Measurement data can be printed quickly from a formatted HTML report or exported in .CSV format for further analysis in spreadsheets
- Simple file management—Copy and paste measurement data from the PosiTector to a local folder on your computer, network folder or cloud drive
- Access stored screen captures (snapshots) of the PosiTector display



PosiTector and PosiTest AT-A instruments can integrate with third-party software, drones, ROVs, PLCs, and robotic devices using several industry-standard communication protocols.

PosiTector Developer Resources
including Bluetooth 4.0, WiFi,
USB Keyboard, and USB Serial