



# **IFTTT**

## INTEGRATION FOR TAHOMA<sup>®</sup> RTS

## TABLE OF CONTENTS

I.	OVERVIEW -----	3
	INTRODUCTION	
	RESOURCES & APPLICATIONS	
II.	SETUP -----	4
	SMART PHONE or TABLET REQUIREMENTS	
	CONNECTIONS & INDICATORS	
	SYSTEM CONFIGURATION	
	CONNECT IFTTT TO TAHOMA	
	CREATE AN APPLETT	
	DISCONNECT IFTTT FROM TAHOMA	

# I. OVERVIEW

## INTRODUCTION

The Somfy Organization strength has been demonstrated with 50 years of experience in motorization. Leading the shading industry with innovation and modernization solutions for homes and commercial buildings. Offering the widest range of strong, quiet motors and controls for all types of applications and technologies.

### Who is this Guide for?

This guide is aimed at providing support and guidance to homeowners, installers and dealers, achieving complete automation of Radio Technology Somfy® (RTS) motors and the TaHoma® Smartphone and Tablet Interface.

### What does this Guide contain?

The sections of this guide contain walkthroughs and methods of controlling RTS motors using the TaHoma® Smartphone and Tablet Interface as the bridge between IFTTT and the Smart Shading by Somfy.

This guide discusses the method of integration with IFTTT.

For advanced technical support contact:

Somfy Technical Support US at 1-800-227-6639

technicalsupport\_us@somfy.com

### How to use this Guide?

This guide is designed as a reference manual. Use the table of contents, then follow along in the instruction.

## RESOURCES & APPLICATIONS

Visit [www.somfypro.com](http://www.somfypro.com) for the following guides:

- Somfy TaHoma Smartphone and Tablet Interface Programming Guide
  - [Somfy RTS Pocket Programming Guide](#)

Subscribe to the Somfy YouTube Channel [www.youtube.com/somfysystems](http://www.youtube.com/somfysystems)

Visit the Google Play or iOS App Store for the Somfy TaHoma North America App:



Google Play Store



iOS App Store

Visit the Google Play or iOS App Store for the IFTTT App:



Google Play Store



iOS App Store

## II. SETUP

The Somfy TaHoma® Smartphone and Tablet Interface provides a single platform for Somfy RTS and future ecosystems with a wide range of interior and exterior applications. One TaHoma Interface supports up to 40 channels of RTS and 40 scenes with schedules. Install up to 10 interfaces as zone controllers to increase the RTS range and provide greater flexibility for larger projects.

Each TaHoma Interface is connected to WiFi or directly to the local area network by an optional ethernet adapter for IP Integration with third-party control systems. TaHoma® is compatible with the Somfy Synergy™ API.

Details of this controller and commissioning instruction is available in the Somfy TaHoma Smartphone and Tablet Interface Programming Guide.

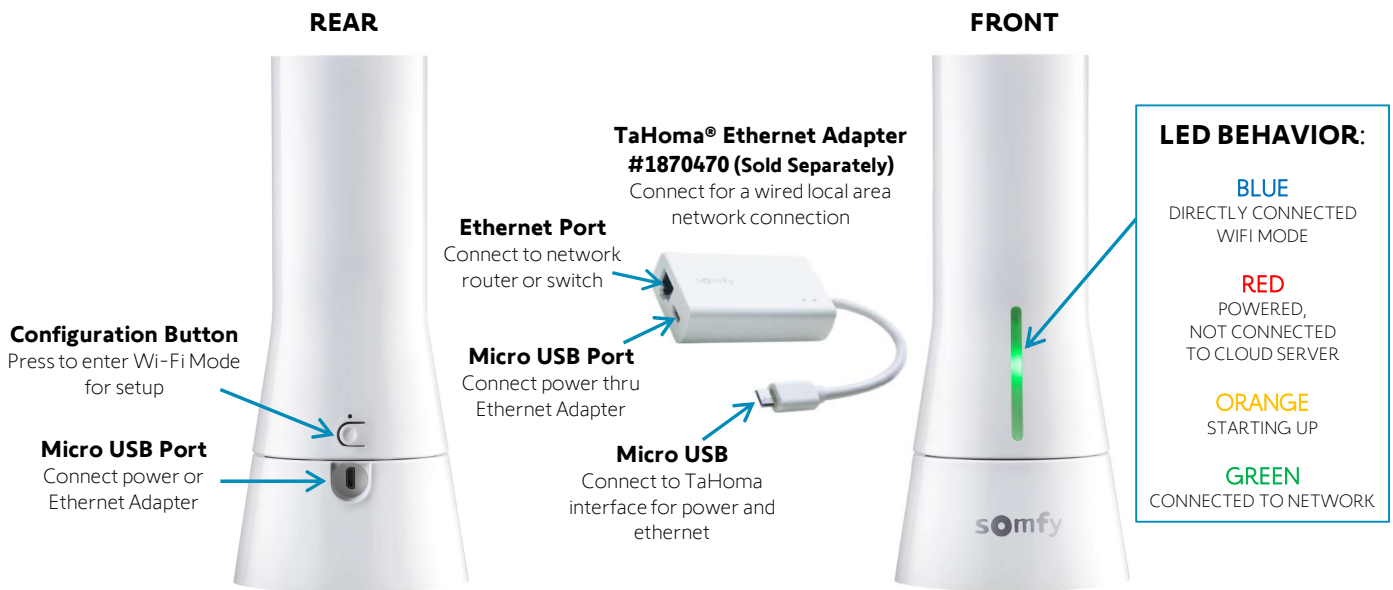
### SMART PHONE or TABLET REQUIREMENTS

The TaHoma app is compatible with the following operating systems and software versions:

iOS 8.0+

Android 6.0+

### CONNECTIONS & INDICATORS



### SYSTEM CONFIGURATION

*A fully operational TaHoma system is required prior to IFTTT programming. Each TaHoma Interface supports up to 40 channels of RTS. RTS devices programmed to an RTS channel will only receive commands from the associated TaHoma Interface. Interfaces must be placed within 25-35' of the RTS devices they control.*

- Confirm with Shade Commissioning Agent that the TaHoma Interface firmware is up to date
  - Must have an IFTTT credentials
- This guide is based on the Free Standard account for IFTTT (Maximum of 3 custom Applets)

## CONNECT IFTTT TO TAHOMA

- 1) Download and install IFTTT App from Google play store or IOS App Store
- 2) In the IFTTT App, Sign in using an email address and password
- 3) Once on the home page SELECT “Explore”
  - Choose “Create” to get started with custom Applets, or choose “Explore” to connect and use any of the 12 pre-made Applets.

NOTE: Standard account allows 3 custom Applets. To create more than 3 Applets the IFTTT Pro Account is required. For more information visit: <https://ifttt.com/plans>

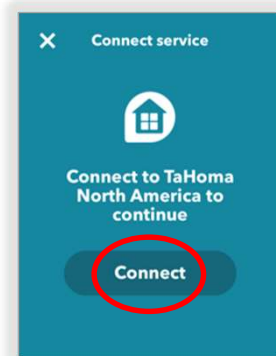
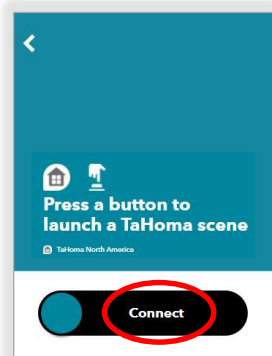
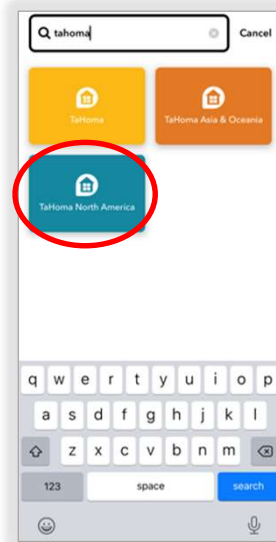
With the free account you can create a maximum of 3 Applets of your own.

- 4) From the search bar type “Tahoma” and SELECT “TaHoma North America”

- 5) SELECT an available pre-made Applet from the list, then SELECT “Connect”

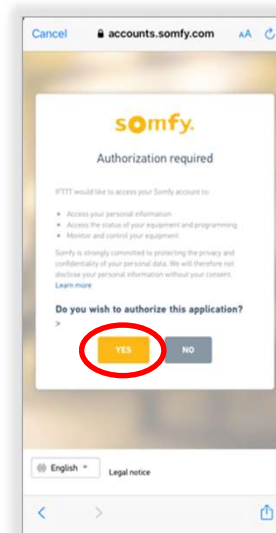
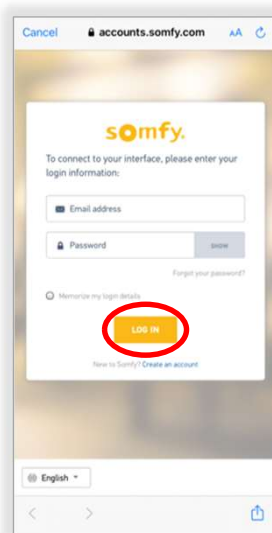
OR

SELECT “Connect” on Tahoma North America to create your own Applet



During this step, the Login Credentials for TaHoma Interface will be required.

- 6) Enter TaHoma Login credentials previously used to Register during Tahoma Programming
- 7) SELECT “LOG IN”
- 8) SELECT “YES” to authorize IFTTT to access the Somfy account



**Accounts are now connected.**

# CREATE AN APPLLET

## Create an Applet button widgets to launch TaHoma Scenes

This process creates widgets used from the home screen of Android and IOS devices.

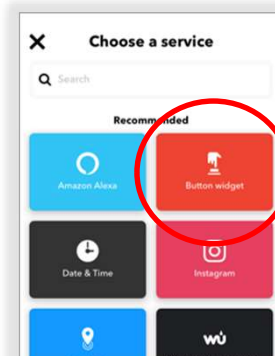
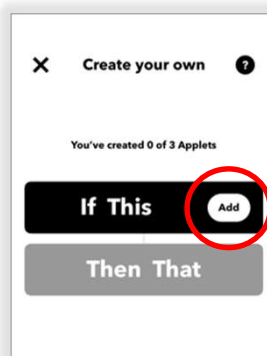
1) From IFTTT home page SELECT "Create"

- Choose "Create" to get started with custom Applets, or choose "Explore" to connect and use any of the 12 premade Applets.
- Standard account allows 3 custom Applets. To create more than 3 Applets the IFTTT Pro Account is required. For more information visit: <https://ifttt.com/plans>



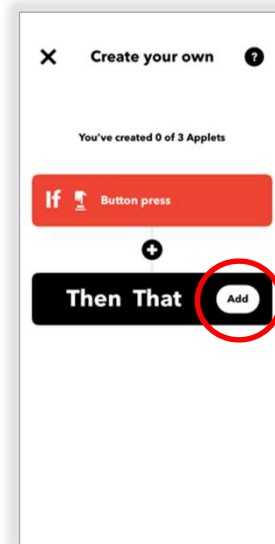
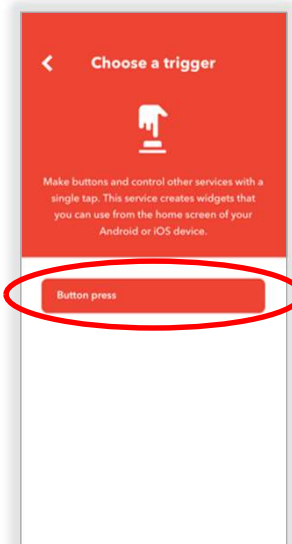
2) SELECT "Add" next to If This

3) SELECT "Button Widget"

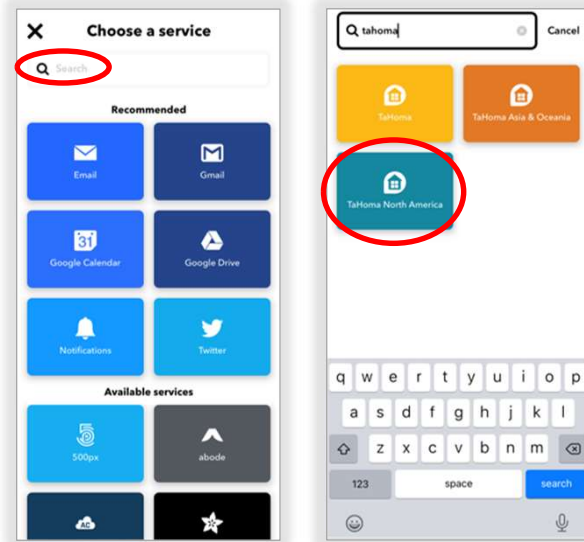


4) SELECT "Button Press"

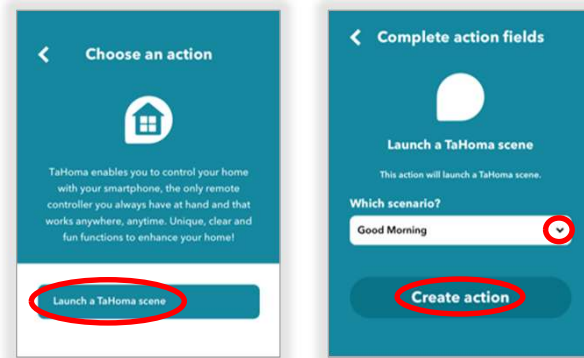
5) SELECT "Add" next to Then That



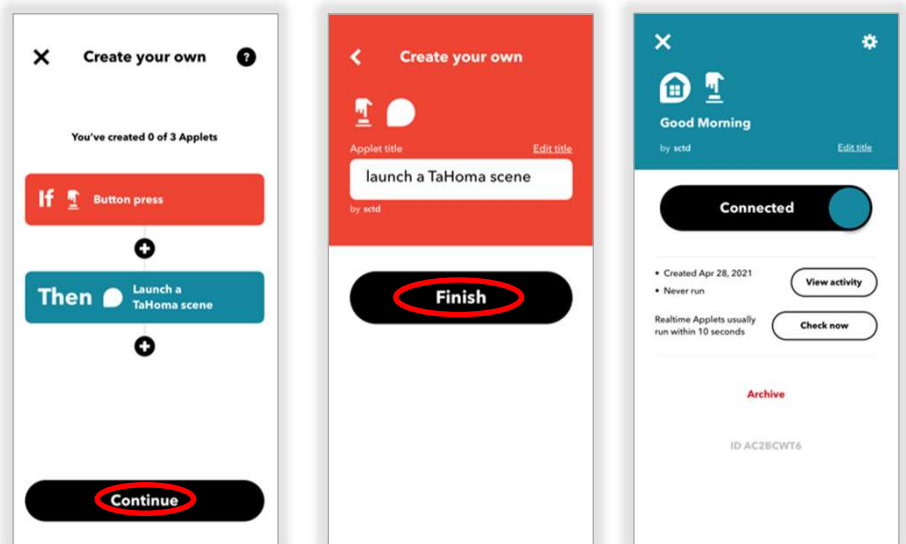
- 5) From the search bar type "Tahoma" and SELECT "TaHoma North America"
- 6) SELECT "Launch a TaHoma Scene"



- 7) SELECT "Create action"
- 8) SELECT "Continue"



- 9) Enter an Applet Title. Example "Good Morning"
- 10) SELECT "Finish"
- 11) SELECT "Continue" to complete the Applet



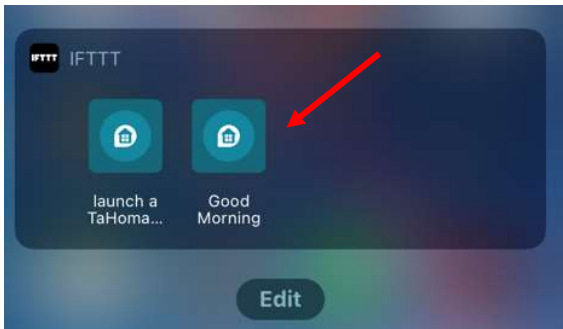
**Button widget Applet is now connected.**

To add the new button widget to your Android or IOS home screen, follow the steps below:

## IOS –

Widgets on IOS can be accessed in the “Today View”. Button Widget can be long-pressed to trigger the IFTTT Applet (for 3D Touch-enabled devices).

- 1) Open “Today View” on the IOS device
- 2) Scroll down to the bottom and SELECT “Edit”
- 3) Scroll down to the bottom and SELECT “Customize”
- 4) Find IFTTT and SELECT the green add/plus symbol (+)
- 5) SELECT “Done”



## ANDROID –

### OPTION 1

- 1) Go to the widget applet details screen in the IFTTT App.
- 2) Press the “Add home screen widget” button to prompt instructions

*Note: A button will be added to the home screen*

### OPTION 2

- 1) Go to the device home screen
- 2) Long press any empty space on home screen, this should prompt the widget menu to appear
- 3) On the widget menu, find IFTTT
- 4) Long press either “IFTTT Small” or “IFTTT Large” and drag it to any empty space on home screen to add the widget



## DISCONNECT IFTTT FROM TAHOMA

If Applets are no longer required to trigger any RTS shades by voice, follow the steps below:

*All premade and created Applets will no longer function after completing these steps*

*If IFTTT Services are required again, please refer to the CONNECT IFTTT TO TAHOMA section of this guide*

1) SELECT the email address on the top right-hand corner

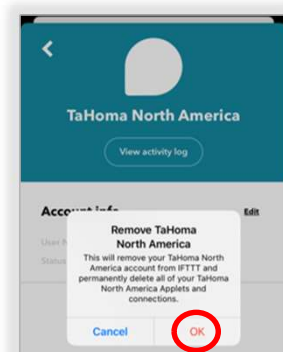
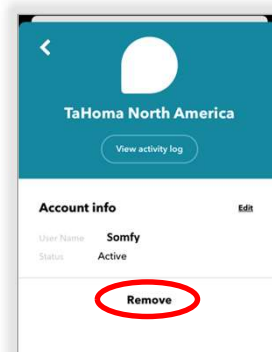
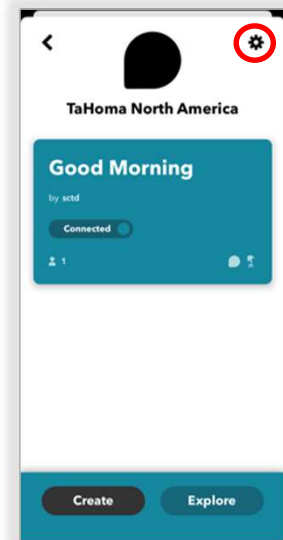
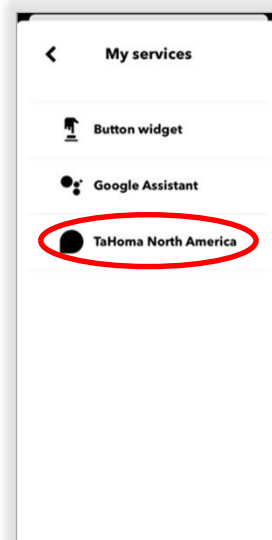
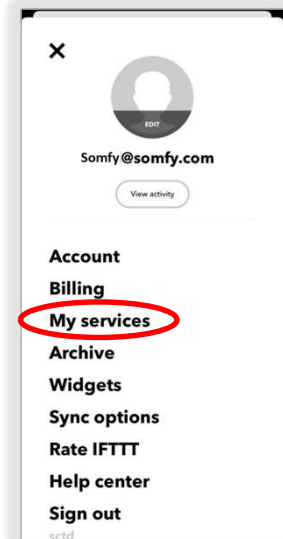
2) SELECT "My Services"

3) SELECT "TaHoma North America"

4) SELECT the gear icon on the top right-hand corner

5) SELECT "Remove"

6) SELECT "OK"



**The TaHoma North America Applet is now disconnected.**

## ABOUT SOMFY

SOMFY® has been improving everyday life for more than 270 million people by designing and manufacturing intelligent motorization solutions for interior window coverings and exterior solar protections. Somfy innovates to automate and connect shades, blinds, draperies, awnings, rolling shutters, exterior screens & pergolas for commercial and residential buildings in 58 countries across the globe. With 170+ million motors produced over the last half century, Somfy is committed to creating reliable and sustainable solutions that promote the best way of living and well-being for all.

## FOR QUESTIONS OR ASSISTANCE PLEASE CONTACT TECHNICAL SUPPORT:

(800) 22-SOMFY (76639)

technicalsupport\_us@somfy.com

### SOMFY SYSTEMS INC

#### SOMFY NORTH AMERICAN HEADQUARTERS

121 Herrod Blvd.

Dayton, NJ 08810

P: (609) 395-1300

F: (609) 395-1776

### FLORIDA

1200 SW 35th Ave.

Boynton Beach, FL 33426

F: (561) 995-7502

### CALIFORNIA

15301 Barranca Parkway

Irvine, CA 92618-2201

F: (949) 727-3775

### SOMFY ULC

#### SOMFY Canada Division

5178 Everest Drive

Mississauga, Ontario L4W2R4

P: (905) 564-6446

F: (905) 238-1491

[www.somfypro.com](http://www.somfypro.com)

A BRAND OF **SOMFY** GROUP

