

01511K 12pcs Penumatic shovel and hammer set

- Strong impact
- Variety of accessories
- Suitable for disassembly of chassis, suspension and brake system components
- Suitable for dismantling the car body



No.	Shank hole spec.(mm)	Impact frequency(BPM)	L×W×H(mm)	Unit Weight(kg)			
01511K	φ10	2200	284×52×162	2.2	-	3	17.5

▲ Three-month warranty. Accessories and wearing parts are not covered by the warranty

02571 Air Hammer Set



- The set includes: 1 pc Pneumatic Chipping Hammer, 5 pc Medium Carbon Steel Chisel of 175mm in length subjected to heat treatment, 1 pc Spring Fixator, and 1 pc Blow Mold Case
- Cylinder and piston made of alloy steel for long service life
- Power control switch for speed and power output adjustment
- Rear exhaust keeping airflow away from operator and workpiece



No.	Output End Specification	Free Speed (RPM)	Average Gas Consumption (CFM)	Noise Level ² dB(A)	L×W×H (mm)	Air Inlet Size	Min. Air Hose ID(mm)	Working Air Pressure ³ (Kgf/cm ²)	Unit Weight(kg)			
02571	10MM Round Bar Chuck	3000 BPM	3	101.4	175×180×50	1/4"	10	6.35	1.58	-	4	16

▲ ¹ For tightening capability standard for bolts, refer to bolts with strength level of 12.9 in DIN 267. ² Noise level is sound pressure of level A. ³ Working air pressure refers to the real-time dynamic air pressure measured at the air inlet of the product during idling operation; ⁴ Working torque refers to the accumulated torque actually output by the tool running forward for 5 seconds under working pressure; ⁵ Maximum reversing torque refers to the torque actually accumulated when the tool reverses for 15 seconds under operating air pressure

Air Blow Gun



97221



97222

- Working air pressure 5.0-8.0KGF/cm²
- Brass joint dimensions 1/4"NPT
- Gas flow
- 1/4"-inner-diameter air tube: 350L/min 3/8"-inner-diameter air tube: 430L/min
- Safety precautions
- Wear ear protection, eye protection, work gloves and other personal protective equipment for operation.

No.	Spec. (mm)			
97221	100	5	60	10.6
97222	250	5	50	12.6

▲ Excluded from lifetime warranty terms.

Industrial Air Blow Gun



- POM material handle
- Industrial valve inside
- Made in Denmark
- Valve body with one million life cycles

No.	Air Outlet ID	Air Flow (L/MIN)	Noise Level ² dB(A)	L×W×H(mm)	Air Inlet Size	Min. Air Hose ID(mm)	Working Air Pressure ³ (Kgf/cm ²)	Unit Weight(kg)			
97223	Φ2.3	380	85	233×122×23	1/4"	6.5	6-8	0.11	-	50	9.5
97224	Φ2.3	380	85	414×122×23	1/4"	6.5	6-8	0.14	-	50	11.4

▲ ¹ For tightening capability standard for bolts, refer to bolts with strength level of 12.9 in DIN 267. ² Noise level is sound pressure of level A. ³ Working air pressure refers to the real-time dynamic air pressure measured at the air inlet of the product during idling operation; ⁴ Working torque refers to the accumulated torque actually output by the tool running forward for 5 seconds under working pressure; ⁵ Maximum reversing torque refers to the torque actually accumulated when the tool reverses for 15 seconds under operating air pressure. Excluded from lifetime warranty terms.

Air Source Processor



Note: Please note that the compressed air should pass through the filter first and then through the lubricator.



No.	Connector Specification	Filtration Accuracy	Maximum Flow	Maximum Air Inlet Pressure	Maximum Air Outlet Pressure	Filter Cup Capacity	Oil Cup Capacity	L×W×H	Unit Weight					
	(PT)	(μm)	(L/min)	(psi)	(bar)	(psi)	(bar)						(ml)	(ml)
29921	1/4"	5	2200	215	15	145	10	55	80	115×69×233	1.5	-	12	19.9
29931	3/8"	5	3000	215	15	145	10	55	80	115×69×233	1.5	-	12	19.9
29941	1/2"	5	3100	215	15	145	10	55	80	115×69×233	1.5	-	12	19.9

▲ Excluded from lifetime warranty terms.

PU spiral air hose



- Made from TPU materials imported from Taiwan
- Standard male/female quick couplings
- Joint with rubber sheath

No.	Air Hose Id	Air Hose Od	Total Length	Max. Working Pressure		Unit Weight			
	(mm)	(mm)		(psi)	(bar)				
28081	8	12	6	145	10	0.61	-	12	8.2
28082	8	12	9	145	10	0.84	-	12	11.2
28101	10	14	6	132	9	0.76	-	12	10.2
28102	10	14	9	132	9	1.04	-	12	13.8
28103	10	14	12	132	9	1.34	-	9	13.7

▲ Excluded from lifetime warranty terms.



09008 12Pc. 1/2" Dr. Impact Socket Set, SAE



- 10Pc. 1/2" Dr. SAE Impact Socket (7/16", 1/2", 9/16", 5/8", 11/16", 3/4", 13/16", 7/8", 15/16", 1")
- 1Pc. 1/2" Dr. Impact Universal Joint
- 1Pc. 1/2" Dr. Impact Extension Bar (5")

No.			
09008	-	8	17.9

09009 12Pc. 1/2" Dr. Impact Socket Set, SAE

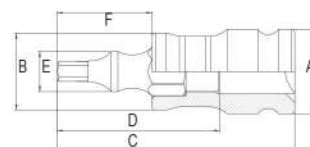


- 10Pc. 1/2" Dr. Impact Socket (10, 11, 13, 14, 17, 19, 21, 22, 23, 24mm)
- 1Pc. 1/2" Dr. Impact Universal Joint
- 1Pc. 1/2" Dr. Impact Extension Bar (5")

No.			
09009	-	8	16.5

1/4" Dr. Impact Bit Socket, Torx®

1/4"



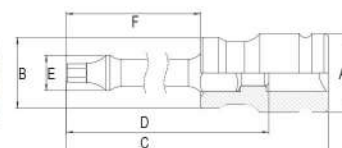
- Bit made of special alloy steel for high hardness and wear resistance Socket made of CR-Mo by cold forging process for impact resistance
- Cylindrical shank for better torsion resistance
- Special construction for tight connection between bit and socket

No.	Spec. (mm)	A (mm)	B (mm)	C (mm)	D (mm)	E (mm)	F (mm)			
35203	3	12.6	11.5	35	24	6	14	10	200	4.4
35204	4	12.6	11.5	35	24	6	14	10	200	4.5
35205	5	12.6	11.5	35	24	6	14	10	200	4.6
35206	6	12.6	11.5	35	24	7	14	10	200	4.7

▲ Excluded from lifetime warranty terms.

3/8" Dr. Impact Bit Socket, Hexagon

3/8"



- Bit made of special alloy steel for high hardness and wear resistance Socket made of CR-Mo by cold forging process for impact resistance
- Cylindrical shank for better torsion resistance
- Special construction for tight connection between bit and socket

No.	Spec. (mm)	A (mm)	B (mm)	C (mm)	D (mm)	E (mm)	F (mm)			
35304	4	20	18	70	57	8	39	6	120	9.2
35305	5	20	18	70	57	8	39	6	120	9.2
35306	6	20	18	70	57	9	39	6	120	9.3
35307	7	20	18	70	57	9	39	6	120	9.5
35308	8	20	18	70	57	9.5	39	6	120	10

▲ Excluded from lifetime warranty terms.

1/2" Dr. Impact Bit Socket, Hexagon

1/2"



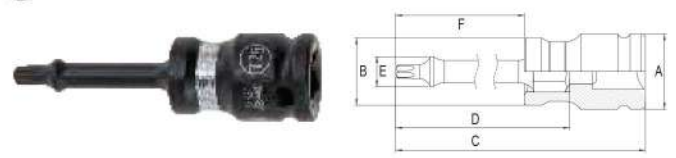
- Bit made of special alloy steel for high hardness and wear resistance Socket made of CR-Mo by cold forging process for impact resistance
- Cylindrical shank for better torsion resistance
- Special construction for tight connection between bit and socket

No.	Spec. (mm)	A (mm)	B (mm)	C (mm)	D (mm)	E (mm)	F (mm)			
35404	4	24	19	75	57	8	39	6	60	6.6
35405	5	24	19	75	57	8	39	6	60	6.6
35406	6	24	19	75	57	9	39	6	60	6.7
35407	7	24	19	75	57	9	39	6	60	6.8
35408	8	24	19	75	57	9.5	39	6	60	7
35410	10	25	25	75	57	14	39	6	60	8.2
35412	12	25	25	75	57	15	39	6	60	8.9
35414	14	25	25	75	57	17	39	6	60	9.5

▲ Excluded from lifetime warranty terms.

3/8" Dr. Impact Bit Socket, Torx®

3/8"



- Bit made of special alloy steel for high hardness and wear resistance Socket made of CR-Mo by cold forging process for impact resistance
- Cylindrical shank for better torsion resistance
- Special construction for tight connection between bit and socket

No.	Spec.	A (mm)	B (mm)	C (mm)	D (mm)	E (mm)	F (mm)			
35322	T15	20	18	70	57	5.2	39	6	120	8.9
35323	T20	20	18	70	57	5.2	39	6	120	8.9
35324	T25	20	18	70	57	8	39	6	120	8.9
35325	T27	20	18	70	57	8	39	6	120	9
35326	T30	20	18	70	57	8	39	6	120	9
35327	T40	20	18	70	57	9.5	39	6	120	9.4
35328	T45	20	18	70	57	9.5	39	6	120	10.2
35329	T50	20	18	70	57	11	39	6	120	10.2

▲ Excluded from lifetime warranty terms.

1/4" Dr. Impact Bit Socket, Torx®

1/4"



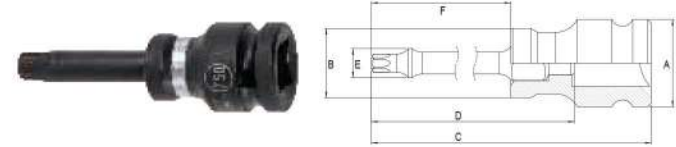
- Bit made of special alloy steel for high hardness and wear resistance Socket made of CR-Mo by cold forging process for impact resistance
- Cylindrical shank for better torsion resistance
- Special construction for tight connection between bit and socket

No.	Spec.	A (mm)	B (mm)	C (mm)	D (mm)	E (mm)	F (mm)			
35221	T10	12.6	11.5	35	24	6	14	10	200	4.2
35222	T15	12.6	11.5	35	24	6	14	10	200	4.3
35223	T20	12.6	11.5	35	24	6	14	10	200	4.3
35224	T25	12.6	11.5	35	24	6	14	10	200	4.3
35225	T27	12.6	11.5	35	24	6	14	10	200	4.4
35226	T30	12.6	11.5	35	24	7	14	10	200	4.4

▲ Excluded from lifetime warranty terms.

1/2" Dr. Impact Bit Socket, Torx®

1/2"



- Bit made of special alloy steel for high hardness and wear resistance Socket made of CR-Mo by cold forging process for impact resistance
- Cylindrical shank for better torsion resistance
- Special construction for tight connection between bit and socket

No.	Spec.	A (mm)	B (mm)	C (mm)	D (mm)	E (mm)	F (mm)			
35425	T27	24	19	75	57	8	39	6	60	6.5
35426	T30	24	19	75	57	8	39	6	60	6.5
35427	T40	24	19	75	57	9.5	39	6	60	6.7
35428	T45	24	19	75	57	9.5	39	6	60	6.9
35429	T50	24	19	75	57	11	39	6	60	7.1
35430	T55	25	25	75	57	14	39	6	60	8.9

▲ Excluded from lifetime warranty terms.



Impact Socket Adaptor

- 1/2"
- 1/4"
- 3/4"
- 3/8"



• Made of CR-Mo by cold forging process for impact resistance

No.	Male × Female			
34714	3/8"×1/4" [M×F]	20	300	5.2
34715	1/2"×3/8" [M×F]	20	200	12.7
34716	3/8"×1/2" [M×F]	20	200	13.5
34717	3/4"×1/2" [M×F]	12	60	9.4
34718	1/2"×3/4" [M×F]	12	60	20.7

Impact Universal Joint

- 3/8"



32902

- 1/2"



34719

- 3/4"



34720

• Made of CR-Mo by cold forging process for impact resistance

No.	L			
32902	3/8"×3/8" [M×F]	-	140	12.8
34719	1/2"×1/2" [M×F]	6	90	16
34720	3/4"×3/4" [M×F]	4	24	16.4

3/8" Dr. 6Pt. Impact Deep Socket

- 3/8"



• Made of CR-Mo by cold forging process for impact resistance

No.	Ø (mm)			
34101	7	6	-	-
34102	8	6	-	-
34103	9	6	-	-
34104	10	6	-	-
34105	11	6	-	-
34106	12	6	-	-
34107	13	6	-	-
34108	14	6	-	-
34109	15	6	-	-
34110	16	6	-	-
34111	17	6	-	-
34112	18	6	-	-
34113	19	6	-	-

3/8" Dr. 6Pt. Impact Socket

- 3/8"



• Made of CR-Mo by cold forging process for impact resistance

No.	Ø (mm)			
34202	7	6	-	-
34203	8	6	-	-
34204	9	6	-	-
34205	10	6	-	-
34206	11	6	-	-
34207	12	6	-	-
34208	13	6	-	-
34209	14	6	-	-
34210	15	6	-	-
34211	16	6	-	-
34212	17	6	-	-
34213	18	6	-	-
34214	19	6	-	-



3/8" Dr. Impact Extension Bar

3/8"



• Made of CR-Mo by cold forging process for impact resistance

No.	L[mm]	Material			
34701	75	Cr-Mo	12	180	15
34702	150	Cr-Mo	6	60	9.7

1/2" Dr. Impact Extension Bar

1/2"



• Made of CR-Mo by cold forging process for impact resistance

No.	Spec.			
33911	3"	1	90	12.9
33901	5"	-	80	171

1/2" Dr. 6Pt. Impact Socket

1/2"



• Made of CR-Mo by cold forging process for impact resistance

No.	Ø (mm)			
34303	10	6	-	-
34304	11	6	-	-
34305	12	6	-	-
34306	13	6	-	-
34307	14	6	-	-
34308	15	6	-	-
34309	16	6	-	-
34310	17	6	-	-
34311	18	4	-	-
34312	19	4	-	-
34314	21	4	-	-
34315	22	4	-	-
34316	23	4	-	-
34317	24	4	-	-
34320	27	4	-	-
34322	29	2	-	-
34323	30	2	-	-
34325	32	2	-	-

1/2" Dr. 6Pt. Thin Wall Impact Socket

1/2"



• Made of CR-Mo by cold forging process for impact resistance
• Thin-walled for use in narrow spaces

No.	Ø (mm)			
34303T	10	6	-	-
34304T	11	6	-	-
34305T	12	6	-	-
34306T	13	6	-	-
34307T	14	6	-	-
34308T	15	6	-	-
34309T	16	6	-	-
34310T	17	6	-	-
34311T	18	4	-	-
34312T	19	4	-	-
34314T	21	4	-	-
34315T	22	4	-	-
34316T	23	4	-	-
34317T	24	4	-	-
34320T	27	4	-	-

▲ Excluded from lifetime warranty terms.

1/2" Dr. 6Pt. Thin Wall Impact Deep Socket

1/2"



• Made of CR-Mo by cold forging process for impact resistance
• Thin-walled for use in narrow spaces

No.	Ø (mm)			
34403T	10	6	-	-
34404T	11	6	-	-
34405T	12	6	-	-
34406T	13	6	-	-
34407T	14	6	-	-
34408T	15	6	-	-
34409T	16	6	-	-
34410T	17	6	-	-
34411T	18	6	-	-
34412T	19	4	-	-
34414T	21	4	-	-
34415T	22	4	-	-
34417T	23	4	-	-
34419T	24	4	-	-
34420T	27	4	-	-

▲ Excluded from lifetime warranty terms.



1/2" Dr. 6Pt. Impact Deep Socket

1/2"



• Made of CR-Mo by cold forging process for impact resistance

No.	Ø (mm)			
34403	10	6	-	-
34404	11	6	-	-
34405	12	6	-	-
34406	13	6	-	-
34407	14	6	-	-
34408	15	6	-	-
34409	16	6	-	-
34410	17	6	-	-
34411	18	6	-	-
34412	19	4	-	-
34414	21	4	-	-
34415	22	4	-	-
34417	23	4	-	-
34419	24	4	-	-
34420	27	4	-	-
34422	29	2	-	-
34423	30	2	-	-
34425	32	2	-	-

1/2" Dr. Impact Extension Bar

1/2"



• Made of CR-Mo by cold forging process for impact resistance

No.	L(mm)			
34703	125	6	72	17.2
34704	150	6	72	20.1
34705	250	6	36	16.2
34706	300	6	30	16

3/4" Dr. 6Pt. Impact Socket

3/4"



• Made of CR-Mo by cold forging process for impact resistance

No.	Ø (mm)			
34505	17	6	72	17.1
34506	18	6	72	17.9
34507	19	6	72	17.8
34508	20	6	72	18.6
34509	21	6	72	19.6
34510	22	6	72	19.1
34511	23	6	54	14
34512	24	6	54	15.4
34513	25	6	54	15.4
34514	26	6	54	14.3
34515	27	6	36	10.9
34516	28	6	36	10.5
34517	29	6	36	12.1
34518	30	6	36	13.5
34519	31	6	36	15.4
34520	32	6	36	16.7
34521	33	6	36	16
34522	34	2	-	-
34523	35	6	36	16.7
34524	36	6	36	17.7
34525	37	6	36	20.3
34526	38	6	36	19.4
34527	39	6	36	21
34528	40	6	36	21.8
34529	41	6	36	21.7
34530	42	6	36	22.5
34531	43	1	18	12.8
34532	44	1	18	13
34533	45	1	18	13.6
34534	46	1	18	13.8
34535	47	1	18	15.1
34536	48	1	18	15.2
34537	49	-	18	16.5
34538	50	-	18	20.2
34540	52	1	-	-
34542	54	1	18	1.7
34543	55	1	12	14.9
34544	56	1	12	23.8
34545	57	-	12	15.5
34546	58	1	-	-
34547	59	1	12	25.7
34548	60	-	12	17.6
34549	63	-	12	18.5
34550	65	1	12	20
34551	67	1	12	21.4

3/4" Dr. 6Pt. Impact Deep Socket

3/4"



• Made of CR-Mo by cold forging process for impact resistance

No.	Ø (mm)			
34605	17	1	20	12.5
34606	18	1	20	12.7
34607	19	1	20	12.8
34608	20	1	20	20.6
34609	21	1	20	13
34610	22	1	20	13.3
34611	23	1	20	13.8
34612	24	1	20	13.9
34613	25	1	20	14.4
34614	26	1	20	22.9
34615	27	1	20	12.9
34616	28	1	-	-
34617	29	1	-	-
34618	30	1	20	14.1
34619	31	1	20	23
34620	32	1	20	14.8
34621	33	1	20	15.9
34622	34	1	20	16
34623	35	1	-	-
34624	36	1	20	17
34625	37	-	20	28.1
34626	38	1	20	18
34628	40	1	18	17.6
34629	41	1	18	17.8
34630	42	1	18	18.6
34631	43	1	-	-
34632	44	-	18	19.7
34633	45	1	18	19.9
34634	46	6	18	20.4
34635	47	1	-	-
34636	48	1	-	-
34637	49	1	-	-
34638	50	-	12	16.5
34640	55	-	12	18.7

3/4" Dr. Impact Extension Bar

3/4"



• Made of CR-Mo by cold forging process for impact resistance

No.	L(mm)			
34707	90	4	24	13.5
34708	100	4	24	14.4
34709	150	3	18	14.2
34710	175	3	18	15.9
34711	200	2	12	11.9
34712	250	-	10	12.1

1/2" Dr. Wheel Protector Impact Socket

1/2"



• Made of CR-Mo by cold forging process for impact resistance

No.	Spec. (mm)			
34410H	17	6	60	11
34412H	19	6	60	12
34414H	21	6	60	15

▲ Excluded from lifetime warranty terms.



1" Dr. 6Pt. Impact Socket

1"



• Made of CR-Mo by cold forging process for impact resistance

No.	Ø (mm)			
34805	17	6	36	19.7
34806	18	6	36	19.9
34807	19	6	36	20.1
34808	20	6	36	20.1
34809	21	6	36	20.3
34810	22	6	36	20.6
34811	23	1	30	20.1
34812	24	5	30	17.6
34813	25	6	30	21.9
34814	26	6	30	22.3
34815	27	5	30	18.9
34816	28	6	30	19.2
34817	29	5	30	19.9
34818	30	4	24	16.3
34819	31	6	24	19.5
34820	32	4	24	16.7
34821	33	4	24	16.8
34822	34	4	24	17.1
34823	35	4	24	18.3
34824	36	4	24	18.6
34825	37	4	24	19.1
34826	38	4	24	19.7
34827	39	4	24	19.8
34828	40	4	24	20.2
34829	41	4	16	14.5
34830	42	4	16	14.7
34831	43	4	16	15.1
34832	44	4	16	15.5
34833	45	4	16	16.8
34834	46	4	16	17.3
34835	47	4	16	17.4
34836	48	4	16	19
34837	49	1	12	19.6
34838	50	4	12	15
34839	51	2	12	15.4
34840	52	2	12	17
34841	53	-	12	17.6
34842	54	2	12	17.9
34843	55	2	12	18.8
34844	56	2	12	37.6
34845	57	2	12	19.6
34846	58	1	8	13.7
34847	59	1	8	15
34848	60	1	8	14.8
34849	63	1	8	15.1
34850	65	1	8	16.8
34851	67	-	8	17.5
34852	68	1	8	18.2
34853	69	-	8	19.1

1" Dr. 6Pt. Impact Deep Socket

1"



• Made of CR-Mo by cold forging process for impact resistance

No.	Ø (mm)			
34905	17	1	18	15.7
34906	18	1	18	25.4
34907	19	-	18	10.8
34908	20	1	-	-
34909	21	1	18	16
34910	22	1	18	16.2
34911	23	1	-	-
34912	24	1	18	16.4
34913	25	-	18	16.6
34914	26	1	-	-
34915	27	1	18	17
34916	28	1	18	17.1
34917	29	1	18	17.3
34918	30	-	18	17.6
34919	31	1	18	17.8
34920	32	1	18	18.7
34921	33	1	18	18.5
34922	34	-	18	18.6
34923	35	1	12	12.5
34924	36	-	12	12.7
34925	37	1	12	19.4
34926	38	-	12	13.3
34928	40	1	-	-
34929	41	1	12	14.5
34930	42	1	-	-
34931	43	1	-	-
34934	46	1	6	9.3
34937	49	1	6	10.2
34938	50	1	6	10.3
34940	55	1	6	11.4

1/4" Dr. Magnetic Nut Driver



• Made of SVCM for high hardness, wear resistance and toughness
 • Cold forged and subjected to integral heat treatment for impact resistance
 • Applicable to electric and pneumatic screwdrivers
 • Built-in magnet for easy connection with screws and nuts

No.	Ø (mm)	L(mm)			
35106	6	65	12	144	5.5
35107	7	65	12	144	6
35108	8	65	12	144	6
35110	10	65	12	144	6.2
35112	12	65	12	144	8.2
35113	13	65	12	144	8.2

Warranty Terms for Pneumatic Tools

Warranty Scope

Subject to the provisions of "Non-Warranty Scope" in Part II below, all pneumatic tools marked with the **SATA** trademark can be repaired free of charge or replaced at the designated maintenance store of SATA within 3 months from the date of purchase in case of any malfunction during normal use. Repaired or replaced items shall be warranted for the rest of the valid period in accordance with This Clause.

Non-Warranty Scope

Pneumatic tools without the **SATA** trademark will not be warranted. Products that are damaged due to abnormal use will not be warranted.

Products that are worn due to too-much continuous use will not be warranted.

Products that are not repaired by maintenance store designated by SATA, disassembled without permission, or damaged due to the use of spare and accessory parts not authorized by SATA will not be warranted.

Products that are subjected to rust, plating peeling, surface scratches or plastic handle damage after use will not be repaired or replaced by SATA.

Products with warranty card not sent back within the specified time will not be repaired or replaced by SATA.

How to replace or repair products

Users shall, within one month from the date of purchase of SATA pneumatic tools (i.e., within 30 days from the date marked on the purchase voucher, and the final date shall be subject to the postmark of the buyer), send back to SATA a complete and valid copy of the "Return Receipt of SATA Pneumatic Tools Warranty Card". Otherwise, it shall be deemed to be a waiver of the warranty rights.

For products within free repair or free replacement scope, users can go to the nearest SATA designated sales shop to fill in the product warranty card and enjoy free repair even repairment with proof of purchase like original receipts and copies.

Service Consulting

If you have any question about warranty terms for **SATA** pneumatic tools, or if you are not satisfied with the service provided by designated sales shop, please contact SATA Tool (Shanghai) Co., Ltd.: SATAMarcom_Asia@ApexToolGroup.com.

Power of Interpretation

These Terms shall be interpreted by SATA Tools (Shanghai) Co., Ltd.

98103 Digital Tire Inflation Gun



- LCD display with backlight, which is clearer
- Aluminum body with rubber sheath, better shockproof and impact-proof performance
- Stainless steel braided hose, resistant to bending with longer life
- Copper intake connector, rust-proof and durable

No.	Measurement range	Reading accuracy	Precision	Max. inlet pressure	L×W×H (mm)	✂	📦	🗑
98103	0-12 bar/ 174 psi	0.01 bar/ 0.1 psi	JB/T 7392-2006 Standard Grade 0.4 Tolerance ±0.4%	15 bar/ 218 psi	315×100× 170	-	20	22

98101 Dial Tire Inflation Gun



- The measurement range is specially designed for passenger cars, with scales displayed clearer
- High-precision mechanical pressure gauge, with better stable performance
- Aluminum body with rubber sheath, better shockproof and impact-proof performance
- Stainless steel braided hose, resistant to bending with longer life
- Copper intake connector, rust-proof and durable

No.	Measurement range	Reading accuracy	Precision	Max. inlet pressure	L×W×H (mm)	✂	📦	🗑
98101	0-8 bar / 117 psi	0.1 bar	JJG 927-2013 Standard Grade 1.6, Within max.range 90- 100%, tolerance ±2.5% The rest of range tolerance ±1.6%	2.215 bar/218 psi	315×100× 170	-	20	22

98104 Exquisite Digital Tire Inflation Gun

2pcs AAA Battery



- Cast aluminum body with shock-absorbing protective cover
- There are three units of PSI, BAR, KPA to choose from
- Three-in-one function, can be used to inflate, deflate and measure tire pressure
- The metal spring sheath protects the hose and prevents the hose from entanglement

No.	Reading accuracy	Digital display meter range	Max Intake pressure	Product accuracy	Work Temperature	✂	📦	🗑
98104	0.01Bar (0.1Psi)	0-12Bar (174Psi)	15 bar/ 218Psi	JB/T 7392-2006 Standard Grade 0.25 Tolerance ±0.25%	-10° C-60° C	-	20	22



98105 Automatic Tire Inflator



- Automatic inflation, easy to operate and comes with a reminder
- Imported high precision ceramic sensors, ensuring accurate tire pressure
- Aluminum cast body has a modern look, light-weighted and durable
- New tyre inflation function, helping tires to get closer to the hub

No.	Measurement range	Reading accuracy	Precision	Max. inlet pressure	L×W×H (mm)	Operating temperature			
98105	0-10 bar/ psi	0.01 bar/ 0.1 psi	0.5-4 Bar: J1875 Standard Grade 0.2 4-10 Bar: J1875 Standard Grade 0.5	10.5 bar/ 152 psi	315×1300× 220	-10°C-50°C	-	21	22.5

