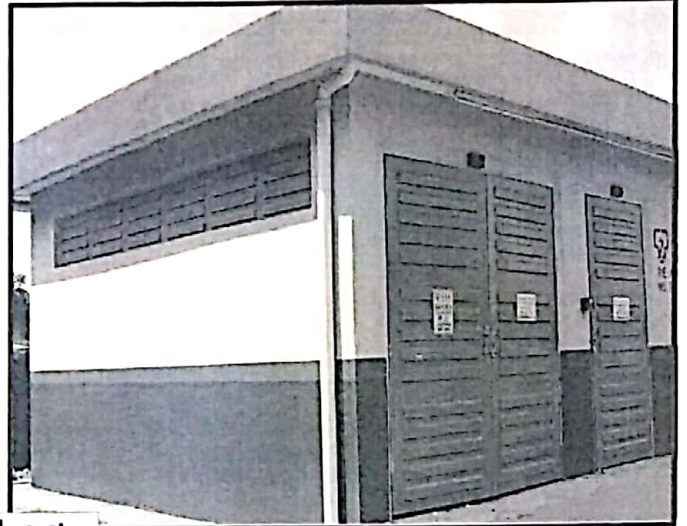
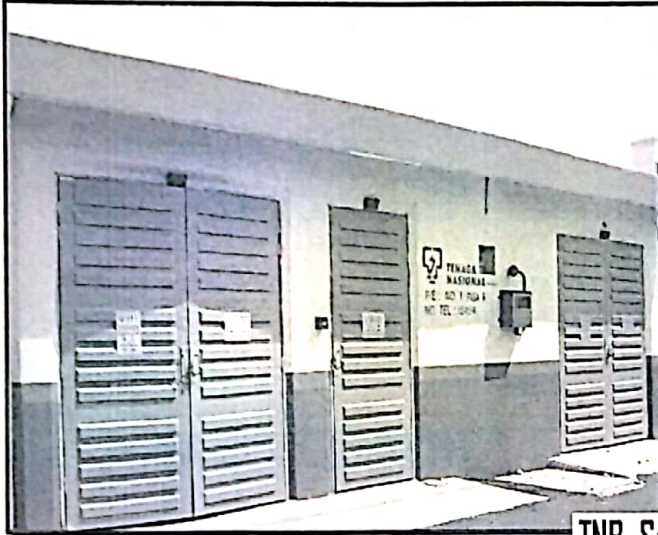




FRP COMPOSITE DOORS AND WINDOW

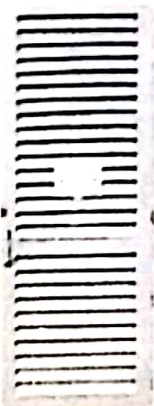
**** We provided FRP Composite Doors & Window for TNB Substation ****



TNB Substation

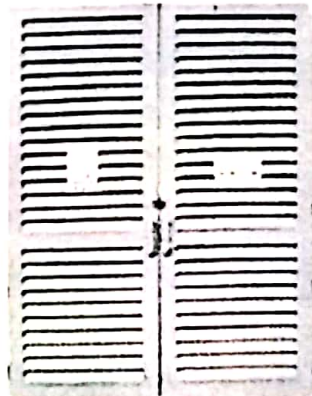


TNB
1 FL



Single Full
Louver Door

TNB
2 FL



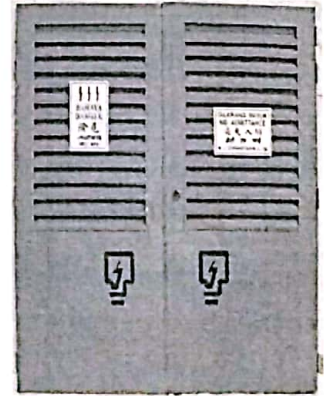
Double Full
Louver Door

TNB
1 HL

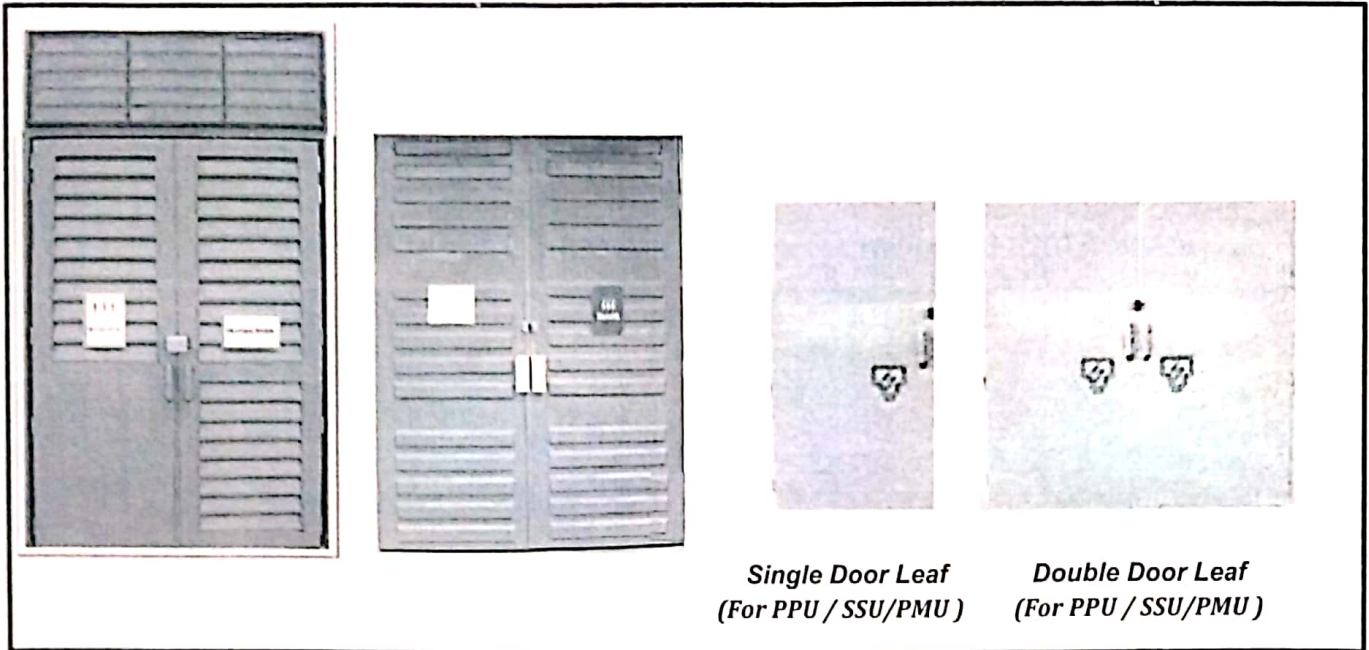


Single Half
Louver Door

TNB
2 HL



Double Half
Louver Door



Single Door Leaf
(For PPU / SSU/PMU)

Double Door Leaf
(For PPU / SSU/PMU)

Composite Door Model :

- ★ *Single Half Louver Door* : *TNB 1HL*
- ★ *Double Half Louver Door* : *TNB 2HL*
- ★ *Single Full Louver Door* : *TNB 1FL*
- ★ *Double Full Louver Door* : *TNB 2FL*
- ★ *Single Solid Door* : *TNB 1SD*
- ★ *Double Solid Door* : *TNB 2SD*
- ★ *Louver Window* : *TNB LW*



Advantages of Composite Door

- *Both side smooth surface*
- *Flame retardant property*
- *Water-proof*
- *Non Corrosive*
- *Strength and durability*
- *No risk of theft*
- *Dielectric*
- *Maintenance free*

No. 11 & 12, Jalan Wira 5, Taman Tan Sri Yaacob Industrial Park, 81300 skudai, Johor Bahru, West Malaysia.

Tel : +6 07-511 6268

Email : asia_hai@streamyx.com

Fax : +6 07-511 1268

Website : www.asiahai.com.my