



LIFTING CLAMP

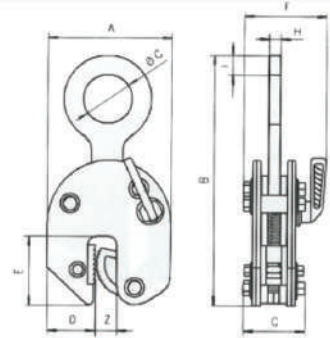
Camlok[®]
Lifting Clamps



92 Series Vertical Plate Clamp



This light weight clamp can be used for transporting sheet metal and steel plates in the vertical position, as well as lifting and rotating through 180°. The jaw can be opened and closed with the locking lever (except for the 92-500 which uses a positive spring-loaded cam). Lift plate with surface hardness level below HRC 30 / Brinell 300.

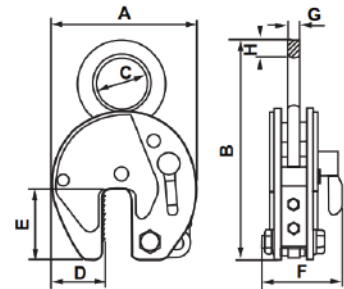


Model	Working Load Limit (kgs)	Jaw Capacity (mm)	Dimensions (mm)								Weight (kg)
			A	B	C	D	E	F	G	H	
92500	50 - 500	0 - 16	99	195	29	33	47	50	48	11	1.5
921500	150 - 1500	0 - 20	126	225	50	49	70	82	55	12	3.0
922000	200 - 2000	0 - 32	192	312	80	75	96	100	81	20	8
923000	300 - 3000	0 - 32	192	312	80	75	96	100	81	30	10

CZ Heavy Duty Vertical Plate Clamp



This heavy duty clamp with welded body can be used for transporting sheet metal and steel plates in the vertical position, as well as lifting and rotating through 180°. The jaw can be opened and closed with the locking lever. The safety lock over rides the spring-loaded cam, preventing the clamp from opening even when there is no load. Lift plate with surface hardness level below HRC 30 / Brinell 300.

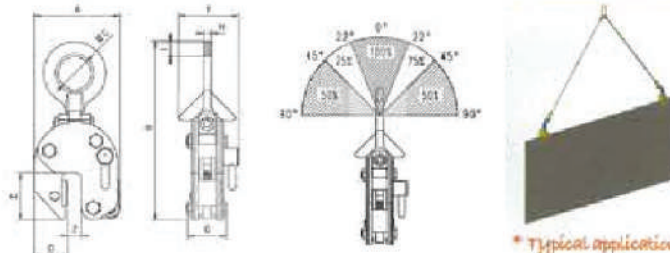


Model	Working Load Limit (kgs)	Jaw Capacity (mm)	Dimensions (mm)								Weight (kg)
			A	B	C	D	E	F	G	H	
CZ1L	100 - 1000	20 - 40	161	260	51	48	70	83	20	19	5
CZ2L	200 - 2000	30 - 60	228	330	67	68	93	110	20	20	13
CZ3L	300 - 3000	30 - 60	228	390	80	68	93	110	20	30	15
CZ4	480 - 4000	0 - 32	197	371	80	68	93	129	20	30	12
CZ4L	480 - 4000	30 - 60	228	390	80	68	93	129	20	30	18
CZ6	720 - 6000	0 - 50	293	484	89	95	143	129	25	35	21
CZ6L	720 - 6000	50 - 100	362	524	89	95	143	129	25	35	28
CZ8	960 - 8000	0 - 50	293	492	89	95	143	129	25	42	26
CZ8L	960 - 8000	50 - 100	362	524	89	114	143	129	25	42	32
CZ10	1500 - 10000	0 - 50	293	545	110	95	143	139	25	45	30
CZ10L	1500 - 10000	50 - 100	362	545	110	114	143	139	25	45	37
CZ12	1800 - 12000	0 - 50	360	613	130	125	162	154	30	55	54
CZ12L	1800 - 12000	50 - 100	460	678	130	175	162	154	30	55	63
CZ15	3000 - 15000	0 - 50	360	613	130	125	162	204	45	55	75
CZ15L	3000 - 15000	50 - 100	460	678	130	175	162	204	45	55	88
CZ20	4000 - 20000	0 - 65	462	755	130	165	210	235	45	65	123
CZ20L	4000 - 20000	65 - 130	560	805	130	195	210	235	45	65	136
CZ30	6000 - 30000	0 - 65	462	732	60	165	210	295	65	-	195
CZ30L	6000 - 30000	65 - 130	560	797	60	195	210	295	65	-	295



CY Hinged Vertical Plate Clamp

The CY plate clamps with hinged hook rings can be used for safe handling of plate at various angles. It can lift plate from the horizontal and put down in the vertical. The hinged hook ring ensures adequate gripping pressure in every position, but the load capacity is reduced as seen in the diagram below showing the load / force capacities.



The main benefit of the CY hinged plate clamps is that longer plates can be lifted or handled, using two clamps on a two legged chain sling, thus eliminating the need for a spreader beam. Lift plate with surface hardness level below HRC 30 / Brinell 300.

Model	Working Load Limit (kgs)	Jaw Capacity (mm)	Dimensions (mm)									Weight (kg)
			A	B	C	D	E	F	G	H	I	
CY1	200 - 1000	0 - 20	126	270	50	49	70	95	63	12	23	4.6
CY2	400 - 2000	0 - 20	192	382	80	75	96	132	92	20	30	14
CY3	600 - 3000	0 - 32	192	382	80	75	96	132	92	20	30	14

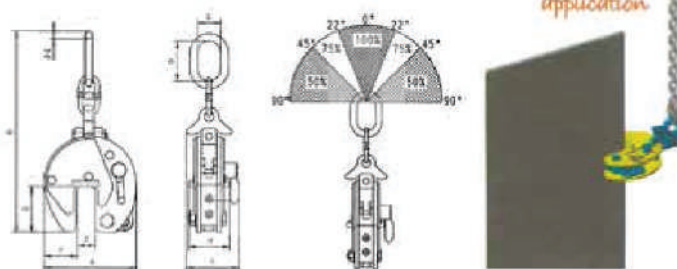
CX Hinged Vertical Plate Clamp



The CX plate clamp shares all the benefits of the CY clamps, but are specifically designed for more heavy duty applications.

The other benefit that the CX clamps offers over the CY clamps is that vertically racked plates can be turned through 180°.

Lift plate with surface hardness level below HRC 30 / Brinell 300.



Model	Working Load Limit (kgs)	Jaw Capacity (mm)	Dimensions (mm)									Weight (kg)
			A	B	C	D	E	F	G	H	I	
CX1500	225 - 1500	0 - 20	140	399	63	125	12.5	48	70	57	83	7
CX3000	450 - 3000	0 - 32	197	515	67	138	19	68	93	81	110	12
CX3000L	450 - 3000	30 - 60	227	515	67	138	19	68	93	81	110	15
CX6000	1200 - 6000	0 - 50	292	737	95	176	28	95	143	137	188	38
CX6000L	1200 - 6000	50 - 100	367	785	98	180	28	115	143	135	188	48
CX8000	1600 - 8000	0 - 50	292	737	98	176	28	95	143	136	210	39
CX8000L	1600 - 8000	50 - 100	367	785	98	180	28	115	143	136	210	51
CX10000	2000 - 10000	0 - 50	360	903	110	195	33	125	162	170	223	61
CX10000L	2000 - 10000	50 - 100	446	921	112	195	33	168	162	170	223	76

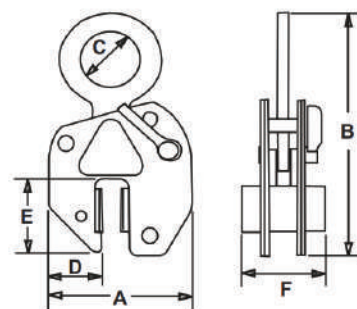
LJ Non-Marking Vertical Plate Clamp



The LJ non-marking plate clamps are designed for lifting, turning and transporting of all structural steel plates, stainless steel, iron, timber and aluminum without marking, damaging or leaving indentations on the surface. It can also be used for plates with extremely hard surfaces.

These clamps come with leather lined pads and jaws, however there is also the option of having rubber pads fitted for use with polished materials.

The surface of the plate must be free of oil, grease or any other liquid to ensure safe transport.



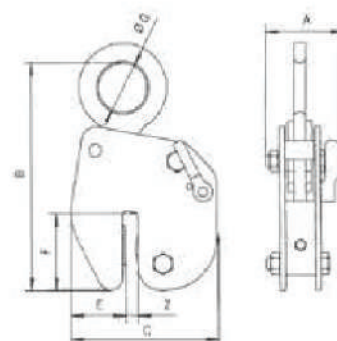
Model	Working Load Limit (kgs)	Jaw Capacity (mm)	Dimensions (mm)									Weight (kg)
			A	B	C	D	E	F	G	H	I	
LJ500	25 - 500	0 - 10	127	200	55	52	69	86.5	76	13	20	3.5
LJ1500	180 - 1500	0 - 20	215	345	85	75	135	131	118	20	23	12

HG High Grip Vertical Plate Clamp



HG plate clamps have an extremely high clamping pressure which makes the clamps suited to the transport of plate with surface hardness up to HRC 40 / Brinell 375.

The clamps can be opened and closed with a locking lever. The safety lock overrides the spring-loaded cam, preventing the clamps from disengaging from the transported material even where there is no load.



Model	Working Load Limit (kgs)	Jaw Capacity (mm)	Dimensions (mm)							Weight (kg)
			A	B	C	D	E	F	G	
HG500	25 - 500	0 - 10	42	230	148	10	55	79.0	50	5
HG1000	50 - 1000	0 - 16	93	297	210	16	75	114	67	12
HG2000	200 - 2000	0 - 20	110	416	305	20	102	159	80	22
HG3000	300 - 3000	0 - 20	110	416	305	20	102	159	80	27
HG4000	400 - 4000	0 - 20	120	335	305	20	102	158	80	32



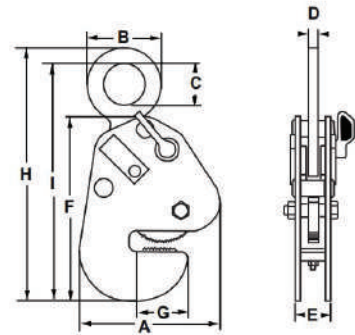
CG Girder Turning Clamp

The main purpose of the CG girder turning clamps is for the transportation and turning of steel girders through 90°.

They are suitable for beams, fabrications, channels and RSJ's with surface hardness up to HRC 30 / Brinell 300.

They can be used individually or for longer beams used in pairs in conjunction with a spreader beam.

The clamps are attached to the horizontal flange of the girder and locked in place by the jaw locking lever.



Model	Working Load Limit (kgs)	Jaw Capacity (mm)	Dimensions (mm)										Weight (kg)
			A	B	C	D	E	F	G	H	I		
CG1	100 - 1000	0 - 16	211	90	50	13	43	263	64	350	337	6	
CG2	200 - 2000	0 - 32	290	140	80	20	60	317	100	465	435	14	
CG4	400 - 4000	0 - 32	290	161	89	20	77	326	108	523	482	19	
CG6	600 - 6000	12 - 50	340	171	89	25	103	375	145	551	524	37	
CG8	800 - 8000	12 - 50	340	203	102	25	103	375	145	545	514	40	



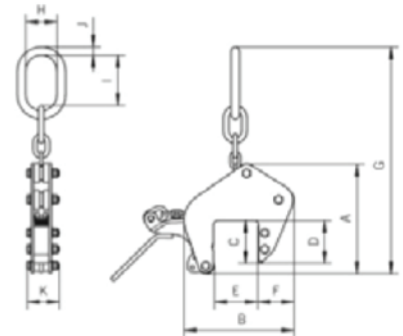
TAG Wide Jaw Universal Clamp

The TAG universal clamps are extremely versatile. They have a large jaw capacity that enables them to be used on a multitude of applications such as loading machine tools, steel constructions, welding and numerous assembly duties. The design means that they do not require additional chain slings and are very easy and simple to use.

The automatic gripping force is retained by a positive tension jaw spring, even if there is slack in the chain. The clamps are also fitted with a 'Quick-Open' lever for ease of loading and unloading.

These clamps are service-friendly, making it easy to exchange parts, which are readily available. Clamp repairs are available through LB Wire Ropes, or can be done by a competent person.

Protective lined jaws can be fitted up to 1250kgs WLL.



Model	Working Load Limit (kgs)	Jaw Capacity (mm)	Dimensions (mm)											Weight (kg)
			A	B	C	D	E	F	G	H	I	J	K	
TAG350/100	35 - 350	0 - 100	264	259	128	100	100	85	550	75	121	20	78	9
TAG350/200	35 - 350	90 - 200	382	434	195	156	200	120	760	75	121	20	90	14
TAG750/100	75 - 750	0 - 100	264	259	128	100	100	85	550	75	121	20	83	9
TAG750/200	75 - 750	90 - 200	382	434	195	156	200	120	760	75	121	20	90	15
TAG1250/100	125 - 1250	0 - 100	320	289	128	100	100	85	570	75	121	20	83	15
TAG1250/200	125 - 1250	90 - 200	382	434	195	156	200	120	760	75	121	20	90	26
TAG2000/100	200 - 2000	0 - 100	328	415	135	115	100	105	571	75	121	20	105	22
TAG2000/200	200 - 2000	90 - 200	375	515	195	165	200	160	750	75	121	20	105	30
TAG3000/90	360 - 3000	5 - 90	297	290	136	106	90	91	570	82	111	32	137	25.5
TAG5000/90	600 - 5000	5 - 90	297	290	136	106	90	91	570	82	111	32	147	30
TAG10000/100	1500 - 10000	0 - 100	405	423	160	130	100	160	720	102	144	40	208	70
TAG10000/200	1500 - 10000	100 - 200	440	562	200	175	200	183	840	102	144	40	208	101

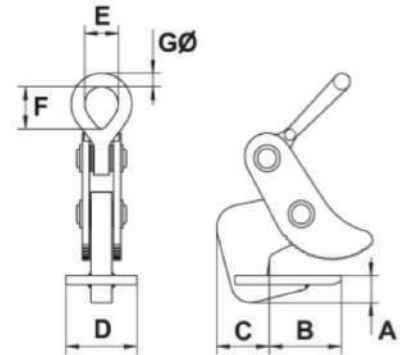
CH Heavy Duty Horizontal Plate Clamp

Used in pairs the CH clamp is designed for loading process machines and to lift and transport sheet steel plate in a horizontal position.

The standard smooth jaw can be replaced with serrated hardened steel teeth by request.

A pair of clamps is designed for use on a 2 legged sling for plate lengths up to 1500mm. It is recommended to use two pairs for larger lengths in conjunction with a spreader beam.

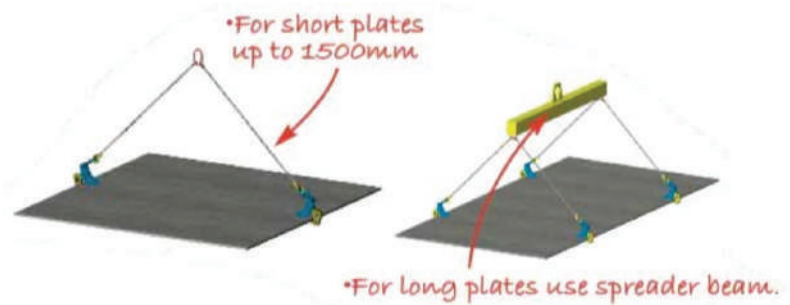
The HH horizontal plate clamps incorporate all of the features of the CH clamps, yet are manufactured from high strength steel giving them exceptionally low tare weights.



Model	Working Load Limit (tonnes)	Jaw Capacity (mm)	Dimensions (mm)							Weight per Pair (kg)
			A	B	C	D	E	F	G	
CH1	1.0	5 - 32	15	82	60	100	32	44	13	6
CH2	2.0	5 - 32	30	82	60	100	50	73	18	11
CH2/L	2.0	20 - 50	30	82	60	100	50	73	18	12
CH4	4.0	5 - 50	40	112	80	100	64	92	25	17
CH4/L	4.0	50 - 100	40	112	80	100	64	92	25	23
CH6	6.0	5 - 75	55	172	100	130	90	130	35	46
CH6/L	6.0	50 - 125	55	172	100	130	90	130	35	56
CH8	8.0	5 - 75	55	172	105	130	90	130	35	53
CH8/L	8.0	50 - 125	55	172	105	130	90	130	35	60
CH10	10.0	5 - 100	65	215	120	150	114	130	35	95
CH10/L	10.0	50 - 150	65	215	120	150	114	130	35	108
HH8	8.0	5 - 50	55	168	105	130	105	130	90	21
HH8/L	8.0	50 - 100	55	168	105	130	90	114	35	28



Note: The top angle between the chain / rope legs must not exceed 45° from vertical.



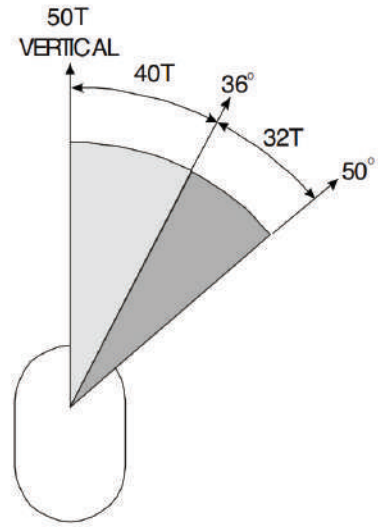


Container Lifting Lugs

These container lifting lugs are supplied in sets of 4 and are available with a lifting capacity up to 56 tonnes. The CLT and CLB lugs serve as flexible lashing points for the transportation of containers.

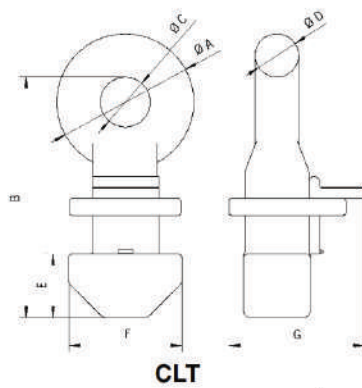
The CLT type is vertically mounted in the hole at the top of the container and is locked into place by simply turning the lug 90°. This configuration allows for transportation via the use of a lifting frame in conjunction with cables, chains or slings.

The CLB model is mounted horizontally to the side of the container at either the top or bottom fixing holes. This model has a spring loaded bolt to prevent accidental release.

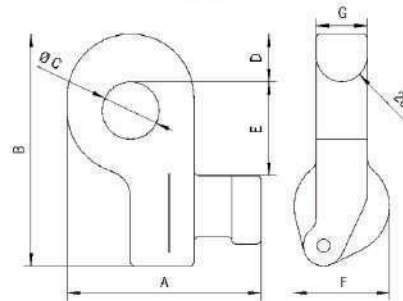


CLB Load Diagram

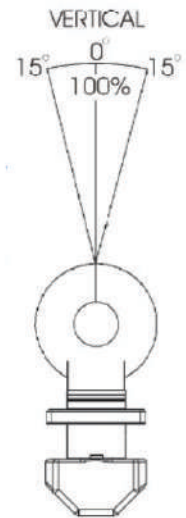
Model	Working Load Limit per Set of 4 (tonnes)	Type of Lifting	Chain Angle From Vertical	Dimensions (mm)							Weight per Set of 4 (kg)
				A	B	C	D	E	F	G	
CLB	32	Side	50°	152	181	45	37	73	75.0	40	18
	40	Side	36°	152	181	45	37	73	75.0	40	18
	50	Side	Vertical	152	181	45	37	73	75.0	40	18
CLT	56	Top	Vertical	123	217	45	39	57	101	121	28



CLB



CLT



CLT Load Diagram