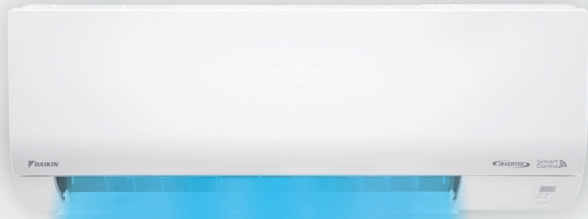




FTKF-0424-I



R32 Inverter

Wall Mounted
FTKF Series

R32



Built-In **Wifi** Control



FTKF

STANDARD INVERTER



Features



Econo Mode

This mode limits the maximum power consumption. It improves operating efficiency while fulfilling basic human comfort needs.



Low/High Voltage Shield (Super PCB)

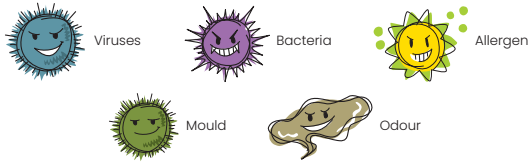
All electrical components in indoor and outdoor units are designed for extreme durability. The printed circuit boards can easily handle large variations of voltage (150V-440V) and increase operation durability.



Gin-Ion Blue Filter

This filter is treated with a positively charged silver ion, which efficiently draws viruses onto its surface and decomposes up to 99.9% in 2 hours. On top of that, this filter can deactivate bacteria and inhibit fungal growth on its surface to improve the quality of indoor air for a healthier lifestyle. The filter delivers consistent performance for around a year if filter is cleaned once every 2 weeks.

Substances can be collected and deactivate by filter:



GO DAIKIN

In-Home & Out-Of-Home Function Allows You To Control Your AC At Anywhere Anytime.



Scan the QR code to find out more!



Easy Maintenance with Removable Drain Pan

The drain pan collects condensation from the indoor heat exchanger fins. Removeable drain pans help to reduce the cleaning time.



Anti-Corrosion Treatment of Outdoor Heat Exchanger Fins

The Outdoor units come with anti-corrosion properties with its Blue fin heat exchanger and new corrosion resistant aluminium alloy microchannel heat exchanger.

Remark: Blue fins heat exchanger for RKF25-71C and microchannel heat exchanger for RKF75C.



RKF25-71



GO DAIKIN

This built-in network adaptor (AWM61A01) and the app turn a smartphone into a remote controller that can be used inside or outside the home. Together, they help to not only save energy and maintain comfort but also eliminate any worries of forgetting to turn off your air conditioner! (Certain app functions are optional.)



Compact & Easy To Use Controller

- Prominent temperature display.
- Real-time clock display. (ARC486A1 only)
- Easily accessible buttons.
- Wired controller option - SHIRO Wired Remote (BRC51D61)



ARC486A1

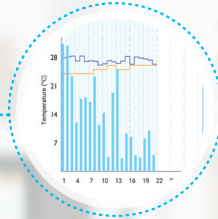


BRC51D61



GO CONVENIENCE

- In-home & Out-of-home function allows you to control your AC at anywhere anytime.
- Weekly scheduling allows you to set your AC at your preferred timing at a weekly basis.



GO SAVE

- Statistical energy usage graphs that allows you to monitor and keep track of your daily energy usage to ensure an efficient AC operation.
- With this, greater savings can be achieved as you can now smartly monitor your AC energy consumption!

* The energy consumption values are based on averaged data; Monetary values is calculated based on domestic tariff A at 21.8sen/kWh.



GO COMFORT

- Different operational modes allows you to enjoy the different kinds of cooling experience.
- Advance control* that provides you with even more cooling options for a better cooling comfort.

* May vary depends on model availability



GO SHARE

- User control sharing easily allows you to share your AC controls with your family members through a simple QR code scanning.
- You can unbind the controls or restrict certain app functions of the AC from your family members at any time you desire.

GO DAIKIN Configuration



Internet



OUT OF HOME



GO DAIKIN
Control your AC at
anywhere and anytime

SPECIFICATIONS

Input Voltage	DC 5V
Power Consumption	750mW
Size (H x W x D)	32.1mm x 50.1mm x 15.0mm
Mass	APPROX. 23g
Wireless Lan Protocol	IEEE 802.11b/g/n
Frequency Range	2.4GHz - 2.48GHz
Encryption	WPA/WPA2

Required for Operation:



Network Adaptor
(Built-in)
AWM61A01



Android™ Phone
or iPhone



GO DAIKIN App
(free)



Wireless
Router



Internet

Available At:



iOS 9.0 or above



Android 5.0 or above



Android 5.0 or above

3 Simple Steps For Unit Pairing

STEP 1



STEP 2



STEP 3



Scan QR code to see
GO Daikin setup video

ENJOY 2 YEARS FREE*1 UPGRADE TO PRO ON US

Function List	Standard RM0.00	Pro RM11.99 Per year
Standard Control Functions *2	✓	✓
User Control Sharing to Family & Friends	✓	✓
In-Home AC Control	✓	✓
Out-Of-Home AC		✓
Indoor/Outdoor Temperature Monitoring		✓
Energy Usage Monitoring		✓
Weekly Scheduling		✓
Countdown Timer		✓
Auto Error Code Detection	✓	✓
Voice control (Alexa, Google Home)	✓	✓

Smart Control Subscription:

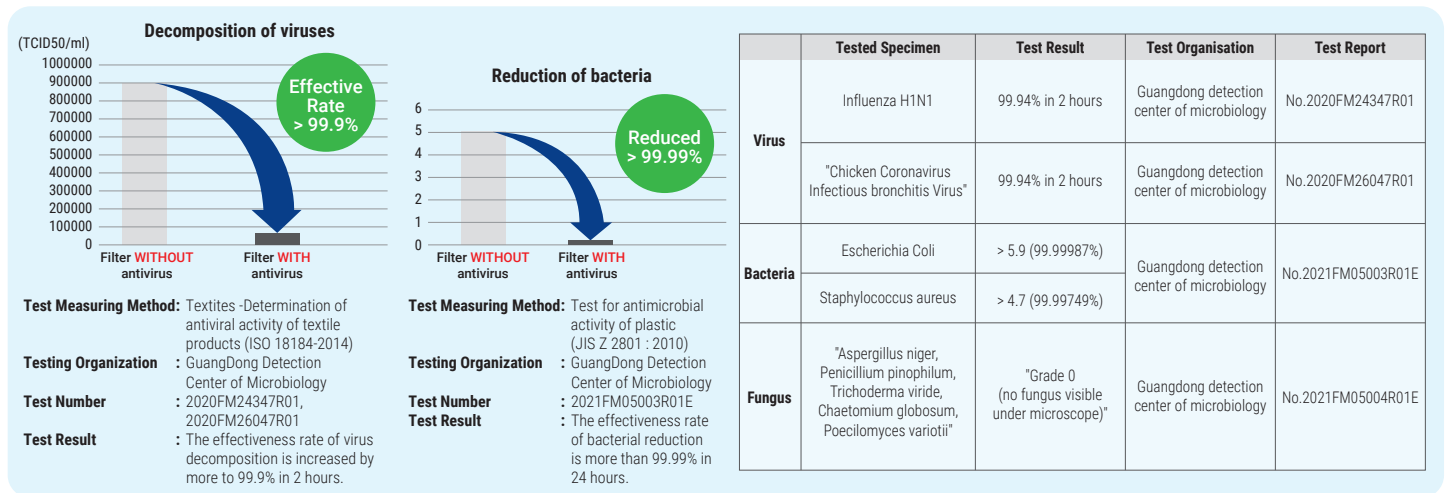
- Free 2 years upgrade to Smart Control Pro upon first time successful pairing to network adaptor (AWM61A01). Package will switch back to Smart Control Standard (FREE) after 2 years. User can choose to upgrade to Smart Control Pro with subscription of RM 11.99 yearly per air conditioner.
- Function includes: On/Off, Operation Mode, Fan Swing, Fan Speed, Powerful Mode, Quiet Mode, Sleep Mode.

Go Daikin App:

- An Internet connection through mobile data or WiFi network is required to use Smart Control function.
- Connectivity of App to AC will depend on the effective coverage area of your Local Area Network (LAN).
- This device supports DHCP (Dynamic Host Configuration Protocol) only. Ensure that your router has DHCP server option function activated before pairing.
- The controllable functions and features may differ depending on the model.

Gin-ION Blue Filter Test Result

The Gin-ION Blue Filter has been tested and confirmed to decompose viruses, bacteria, and inhibit fungal growth on the filter surface.



Specification



FTKF25CV1MF



FTKF35/50CV1MF



FTKF71/75CV1MF



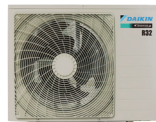
RKF25CV1M



RKF35CV1M



RKF50/71CV1M



RKF75CV1M



FTKF25/35/50CV1M



FTKF71CV1M

Model name	Indoor unit	Wireless	FTKF25CV1MF	FTKF35CV1MF	FTKF50CV1MF	FTKF71CV1MF	FTKF75CV1MF
		Wired	FTKF25CV1MW	FTKF35CV1MW	FTKF50CV1MW	FTKF71CV1MW	-
Outdoor unit			RKF25CV1M	RKF35CV1M	RKF50CV1M	RKF71CV1M	RKF75CV1M
Capacity	Rated (Min - Max)	kW	2.64 (1.00 - 2.70)	3.60 (1.20 - 3.81)	5.28 (1.52 - 5.42)	7.03 (1.93 - 7.18)	7.50 (2.32 - 8.50)
		Btu/h	9,000 (3,400 - 9,200)	12,300 (4,100 - 13,000)	18,000 (5,200 - 18,500)	24,000 (6,600 - 24,500)	25,600 (7,900 - 29,000)
Power supply			1 phase, 220-240 V, 50 Hz (Power to indoor)				
Running current	Rated	A	3.87	5.27	8.24	8.61	9.71
Power consumption	(Min - Max)	W	860 (200 - 960)	1,175 (200 - 1,285)	1,880 (380 - 1,950)	1,965 (380 - 2,300)	2,180 (520 - 2,580)
CSPF		Wh/Wh	4.60	4.60	5.02	6.00	5.60
Energy rating			4 star			5 star	
Heat insulation			Both liquid and gas piping				
Indoor unit			FTKF25CV1M	FTKF35CV1M	FTKF50CV1M	FTKF71CV1M	FTKF75CV1M
Airflow rate	H	cfm	340	400	430	640	700
Sound pressure levels	H / M / L / Q	dB(A)	39 / 33 / 26 / 21	39 / 34 / 26 / 21	42 / 39 / 32 / 29	43 / 41 / 36 / 30	44 / 41 / 36 / 30
Dimensions	H x W x D	mm	280 x 730 x 213	288 x 770 x 234		297 x 990 x 273	297 x 990 x 273
Unit weight		kg	8.5	9.0	9.5	13.0	13.0
Outdoor unit			RKF25CV1M	RKF35CV1M	RKF50CV1M	RKF71CV1M	RKF75CV1M
Refrigerant	Type		R32				
Sound pressure levels	H	dB(A)	48		52	53	
Dimensions	H x W x D	mm	418 x 695 x 244	550 x 675 x 284	615 x 845 x 300		695 x 930 x 350
Unit weight		kg	18.0	21.0	33.0	37.0	40.0
Piping connection	Liquid	mm	ø6.35				
	Gas		ø9.52		ø12.70		ø15.90
Chargeless pipe length			7.5				
Maximum pipe length	m		20		30		35
Maximum height difference			15		20		
Heat Exchanger	Type		Hydrophillic Blue Fin				Microchannel

- Remarks:
- Due to product innovation, all specifications are subjected to change by the manufacturer without prior notice.
 - All units are being tested and comply to ISO5151.
 - Nominal cooling capacity are based on the conditions: 27°C DB / 19°C WB indoor and 35°C DB outdoor ; piping length 7.5m.
 - Sound pressure levels are measured in anechoic chamber according to JIS C 9612 standard. During actual operation, sound pressure level will be higher as a result of room specification condition.
 - The Gin-ION Blue Filter is not a medical device. Benefits shown are only effective for substances which are directly attached on the filter surface.
 - Wireless model will be supplemented with a Wireless Remote Controller (ARC486A1) and a built-in network adaptor (AWM61A01).
 - Wired model will come with only a SHIRO Wired Remote Controller (BRC51D61). To enable the Smart Control function, optional NS Splitter (R50044157819) is required.

DAIKIN MALAYSIA SALES & SERVICE SDN. BHD.

Call Centre: 1300-88-DAIKIN(324546) 198301014326 (109719-M)

Email: customer_service@daikin.com.my

- Branches:
- Kedah Tel: 04-730 5670
 - Johor Tel: 07-557 7788
 - Penang Tel: 04-331 1670
 - Pahang Tel: 09-567 6778
 - Perak Tel: 05-548 2307
 - Kelantan Tel: 09-747 4578
 - Negeri Sembilan Tel: 06-768 8969
 - Sabah Tel: 088-722 194
 - Melaka Tel: 06-288 1133
 - Sarawak Tel: 082-333 299

Website: www.daikin.com.my

Authorized dealer: