



E.VIS

Visitor Management System

E.VIS is a highly effective and user-friendly visitor management system. Its systematic approach makes management of visitors a breeze. The E.VIS helps reduce break-ins and also enhances corporate security through the identification of unwanted or suspicious visitors with the help of the MyKAD technology. E.VIS is designed to keep track of visitor traffic details. It also enables instantaneous background checks to be done easily. It minimizes processing time and errors – signing-in and out, and generates visitor badges in seconds. The E.VIS incorporates a touch screen monitor, MyKAD reader, web-camera and proximity reader to provide the user with a simple and total solution for visitor management.

Highlights of E.VIS

Fast and Accurate Registration

E.VIS allows automatic log-in of visitor information within seconds through the MyKAD reader. This reduces registration time as well as minimizes operational errors.



Flexible Data Entry

The E.VIS, incorporated with touch screen monitor, allows user to key-in the additional information easily via the intuitive on-screen virtual keyboard.



Instant Image

The E.VIS, incorporated with a web-camera, allows user to capture a visitor's image and business card, and such captured visuals are easily and directly stored into the database.

Instant Visitor Badge

E.VIS allows user to assign pre-printed visitor badges (proximity cards) within seconds through proximity reader. The card number will be recorded automatically while signing-in and out.

Enhanced Security Level

The E.VIS is able to restrict/limit access rights of visitor through a pre-assigned proximity card. Thus, security level within a building is greatly enhanced.

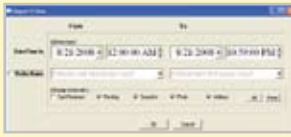
Real-time Status

At any given point of time in a day, real-time information on number of visitors registered, and number of visitors still present in premises, is on constant display on the Main Screen.



Comprehensive Reporting

The E.VIS provides comprehensive reports in real time using analysis tool. User is able to generate reports of visitor traffic pattern, of suspicious visitors, of visitor information with snapshot and business card, etc, easily.



| ELID Sdn Bhd | | | | | |
|--------------------------------------|-----------------|----------------|----------------|----------------|-----------|
| Daily Visitor Report | | | | | |
| 13-08-2008 00:00 to 13-08-2008 23:59 | | | | | |
| Printed: 21/08/2008 9:58:48 AM | | | | | |
| ID Number | Name | Date/Time In | Date/Time Out | Staff Visited | Program |
| 810210-10-0010 | Mr. John SUDHAR | 13/08/08 09:00 | 13/08/08 09:30 | Robert De Jans | Marketing |
| 810210-10-0011 | Dr. John SUDHAR | 13/08/08 09:00 | 13/08/08 09:30 | Robert De Jans | Marketing |

Cost Effective

An affordable and comprehensive visitor management system – immediate savings in paper costs and administrative manpower costs!

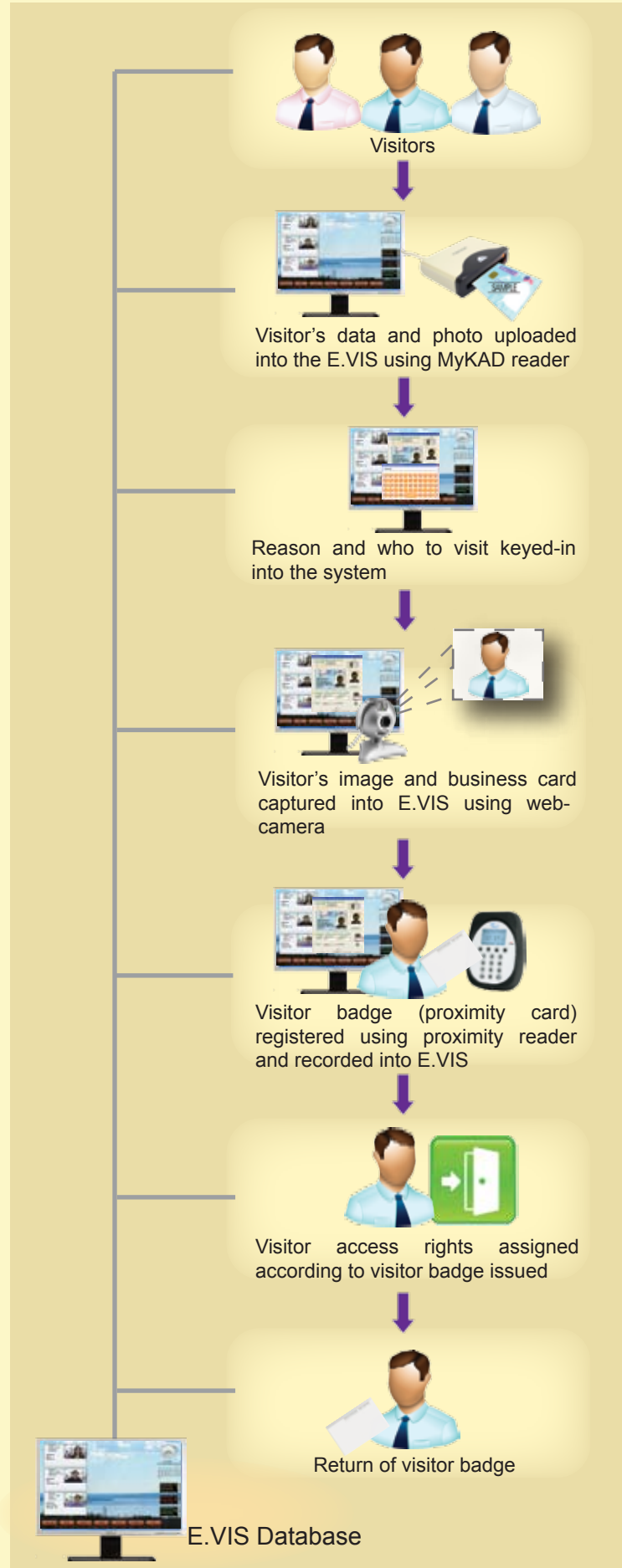
Ordering Information

| | |
|---------------|---|
| Product Code: | ET-EVIS-111 |
| Discriptions: | E.VIS Visitor Management System bundle package consists of: <ul style="list-style-type: none"> • 1 x CPU with 5 USB ports • 1 x 15" LCD Touch Screen • 1 x MyKAD Reader • 1 x ET636 EM Proximity Reader with E.VIS software license • 1 x Web-based Camera |

System Requirements

| | |
|-------------------------|---|
| CPU | Pentium IV or higher with USB ports |
| Operating System | Microsoft Windows 2000/XP/Vista |
| Hard Disk Space | 500MB (Standard Operation), 10GB (with snapshots) |
| Display | Super VGA Monitor with 1 M SVGA interface board (800 x 600 or better) |
| Communication Interface | 2 USB ports: MyKAD reader, EM reader/Software License 3 USB ports (optional): Web-camera (image), Web-camera (business card), Touch-screen monitor |
| Database | Microsoft SQL Server |

E.VIS System Flow



For more information: check out the website at: www.elid.com, or contact our dealers. ELID has a policy of continuous research and development, and reserves the right to change specifications without notice.