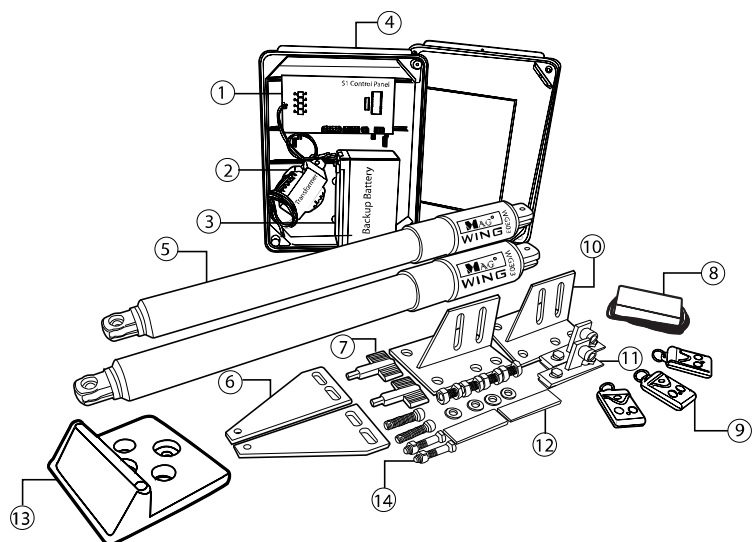


MAG WING ARM WG303

Package Content:



1	MAG S1 Controller Board
2	Transformer 3 amp
3	12v, 7Ah Backup Battery
4	Weatherproof PVC Box
5	Stainless Steel Arm (DC Motor)
6	Rear Connection
7	Manual Release Key
8	Remote Control Receiver
9	Remote Control Transmitter
10	Metal Plate
11	Front Connection
12	Front Metal Plate
13	Stopper
14	Bolt & Nuts

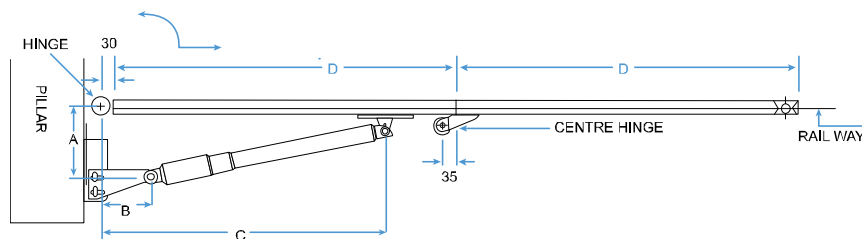
Technical Specification:

Description	Parameter
Driving Method	Electro – mechanical screw driver piston type
Operating voltage	DC 18 V for normal Speed DC 12 V for ending speed
Motor Output	15 watt per arm
Motor Amp.	2.1
Piston Displace	32 cm
Piston Speed	2.9 cm/sec

Description	Parameter
Back-up battery	12 volt. 7Ah rechargeable
Safety Clutch	Electric current sensing using H-Amp Auto Reverse
Electric Controller	Micro-processor based
Temperature	0 to 80°C
Gear Box	Three stages planetary reducer
Manual Operation	Special released key during power failure
Max. Weight of gate	400 kg per wing with force adjustable

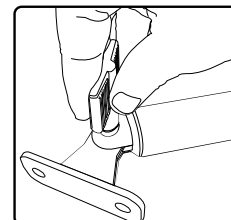
Installation Guide:

Dimension structure for folding gate

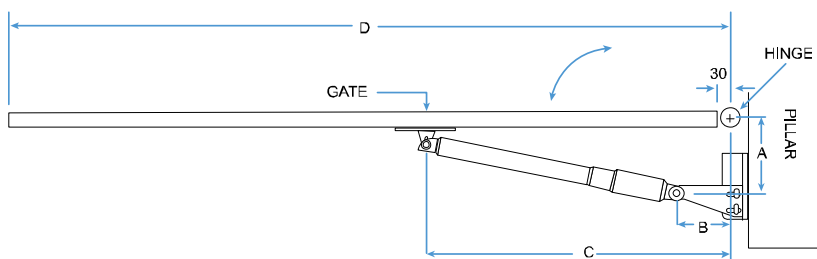


A	165mm ~ 180mm
B	128mm ~ 140mm
C	816mm ~ 837mm
D	Min.1000mm

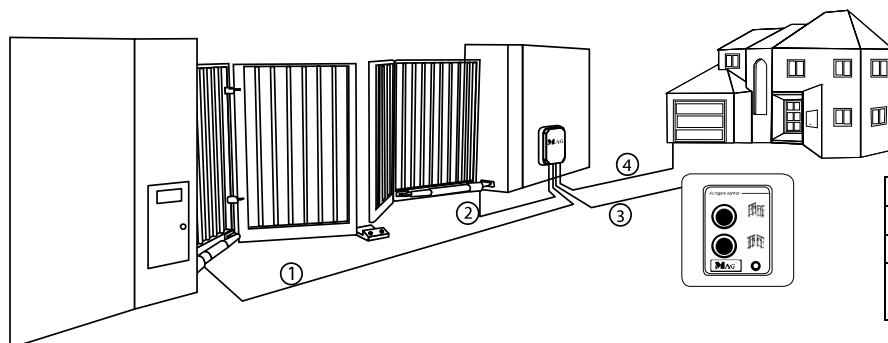
Manual Release Key:



Dimension structure for swing gate

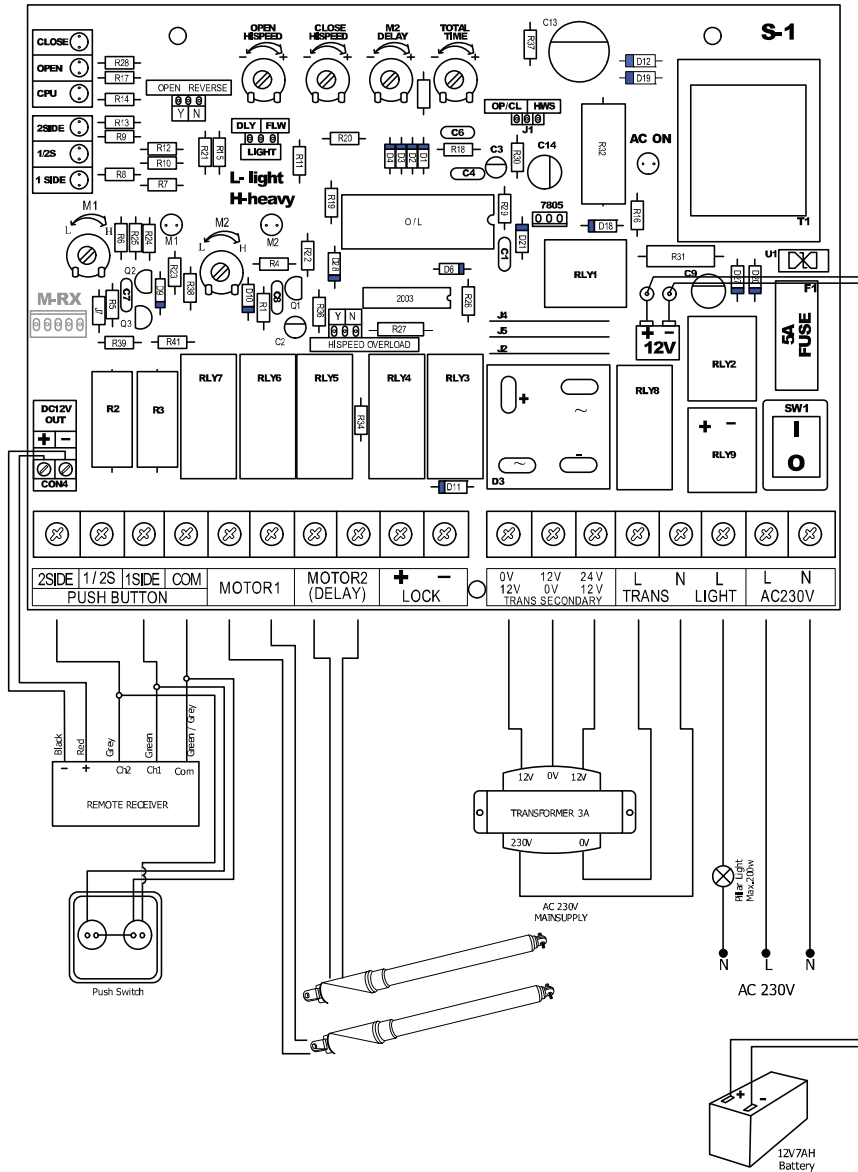


Typical Installation Diagram:



1	Actuator 1 – 2 core. 1.5mm diameter
2	Actuator 2 – 2 core. 1.5mm diameter
3	Push Button – 3 core. 1.5mm diameter
4	AC230V power supply – 3 core. 2.5mm diameter

Control Panel:



Preset	
Open Hi-speed	Adjust from 0~20 sec for opening at hi-speed
Close Hi-speed	Adjust from 0~20 sec for closing at hi-speed
M2 Delay	Adjust from 0~6 sec for closing gate with lock
Total Time	Adjust from 5~30 sec total travelling time
M1	Adjust from 1.5~4amp for motor 1 sensitivity of hi-amp cut
M2	Adjust from 1.5~4amp for motor 2 sensitivity of hi-amp cut

LED	
AC ON	When AC power and red LED lit
Close	Turn on power red close LED lit or when closing
Open	When opening green LED lit until close button pressed
CPU	Turn on power red LED 1 sec continue flash
2 Side	When 2 side push button pressed
½ S	When ½S push button pressed & hold for 3 sec
1 Side	When 1 side push button pressed

Jumper	
Open reverse	“Y” for lock with 0.5 sec reverse when opening.
OP/CL HWS	Press against button gate will reverse close/open at half way. Press against button gate will stop at half way.
Hi speed overload	“Y” when opening hi-amp cut gate will stop, when closing hi-amp cut gate will reverse.
Light – DLY – FLW	Pillar light remain on after closing 30 sec. Pillar light follow motor cut off time.

Wiring Connection	
Push button 2	Press for both gate open/close side
1/2s	Press & hold for 3 sec. Lock side gate open. (for 2 wire only)
1 side	Press for lock side gate open.
Motor	
Motor 1	Connect to arm motor
Motor 2 (Delay)	Connect to arm motor with lock
Lock	Optional DC12V lock require
Trans Secondary	Connect 3amp main transformer secondary terminal
Trans	Connect 3amp main transformer primary terminal
Light	Connect to pillar light LIVE wire terminal
AC230V	Connect to AV230V main power supply