

# WING303

## Automated Arm Gate System



MAG WING303 is an electro-mechanical complete system for automatic arm gate system. It is composed with primary of an electronic panel unit that control actuator motor to open or close the gate in swing motion.

Applicable for residential home with single leaf weight not exceeding 400 kg.

**Standard feature:**

- Max gate weight per leaf is 400 kg
- Full DC operation to avoid any potential electric hazard
- Backup battery standby for power failure
- Actuator capability for 90° opening within only 8 to 10 second
- No underground installation
- Coded remote control allow 30 to 50 meter transmission

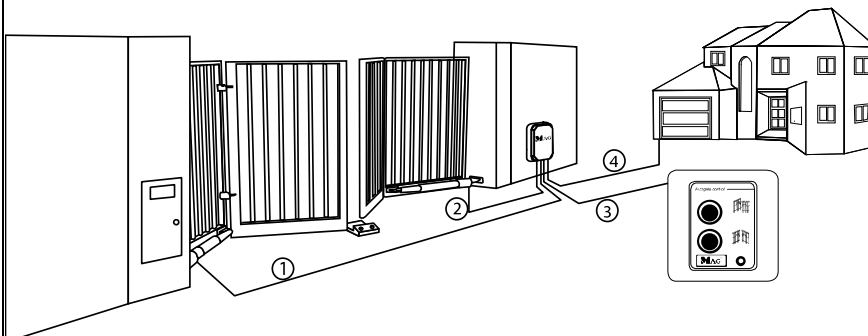
**Technical Specification:**

Description	Parameter
Driving Method	Electro – mechanical screw driver piston type
Operating voltage	DC 18 V for normal Speed DC 12 V for ending speed
Motor Output	15 watt per arm
Motor Amp.	2.1
Piston Displace	32 cm
Piston Speed	2.9 cm/sec
Back-up battery	12 volt. 7Ah rechargeable
Safety Clutch	Electric current sensing using H-Amp Auto Reverse
Electric Controller	Micro-processor based
Temperature	0 to 80°C
Gear Box	Three stages planetary reducer
Manual Operation	Special released key during power failure
Max. Weight of gate	400 kg per wing with force adjustable

**Package includes:**

1	MAG S1 Controller Board
2	Transformer 3 amp
3	12v, 7Ah Backup Battery
4	Weatherproof PVC Box
5	Stainless Steel Arm (DC Motor)
6	Rear Connection
7	Manual Release Key
8	Remote Control Receiver
9	Remote Control Transmitter
10	Metal Plate
11	Front Connection
12	Front Metal Plate
13	Stopper
14	Bolt & Nuts

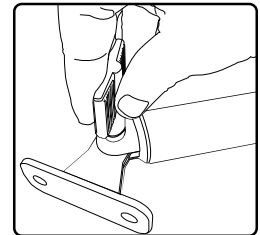
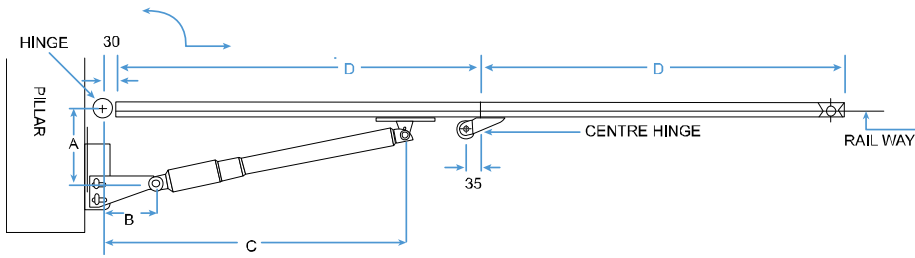
**Typical Installation Diagram:**



1	Actuator 1 - 2 core. 1.5mm diameter
2	Actuator 2 - 2 core. 1.5mm diameter
3	Push Button - 3 core. 1.5mm diameter
4	AC230V power supply - 3 core. 2.5mm diameter

## Typical Installation:

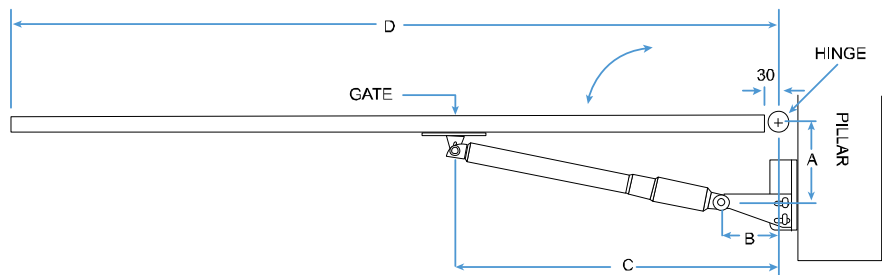
### Dimension structure for folding gate



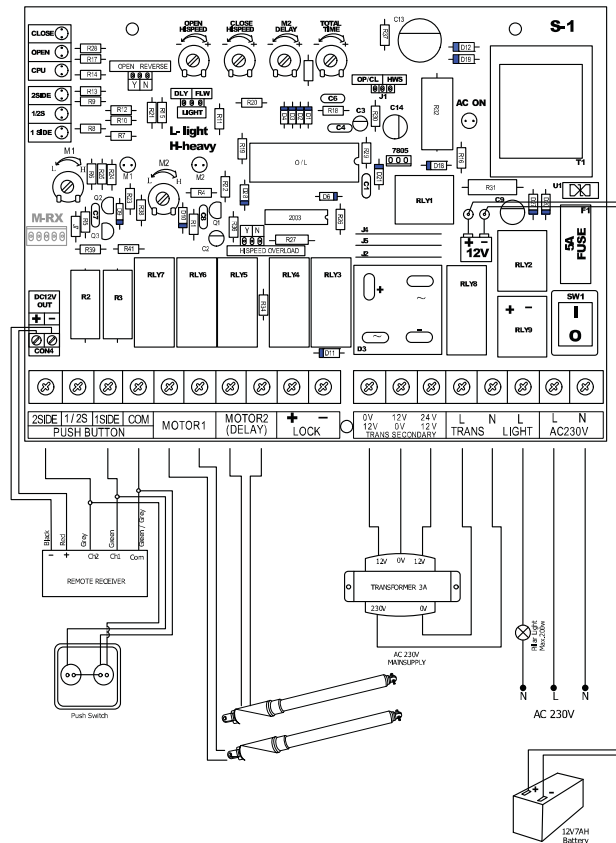
Manual Release Key

A	165mm ~ 180mm
B	128mm ~ 140mm
C	816mm ~ 837mm
D	Min.1000mm

### Dimension structure for swing gate



## Control Panel - Model F203



© COPYRIGHT Nov 2009. This documentation served as a reference only. It is subject to change without further notice. All the diagrams and information in this documentation may not be duplicated or modified in any form without the written approval from the management.