

 <p>CNC-7300 2.0M Box Camera 1/2.8" SONY CMOS Sensor Up to 1920 x 1080 at 30fps TDN POE uSD Card Up to 16G Audio In Video Out</p>	 <p>CNC-7310 2.0M Mini Vandal Proof Dome 1/2.8" CMOS Sensor Up to 1920 x 1080 at 30fps 2.5mm Fixed Lens POE</p>	 <p>CNC-7320 2.0M Vandal Resist Dome Camera 1/2.8" CMOS Sensor Up to 1920 x 1080 at 30fps 3-9mm Motorized Zoom with Auto-Focus Lens POE</p>	 <p>CNC-7330 2.0M 42 IR LEDs Outdoor Camera 1/2.8" CMOS Sensor Up to 1920 x 1080 at 30fps 3-9mm Motorized Zoom with Auto-Focus Lens TDN POE uSD Card Up to 16G Audio In Video Out</p>
---	---	---	--

 <p>CNC-7340 2.0M Mini Zoom Camera 5x (5-25mm) Motorised Zoom with Auto Focus Up to 1920 x 1080 at 30fps POE Video Out</p>	 <p>CNC-7210 1.3M Mini Dome 1/3" SONY CCD Up to 1280 x 720 at 30fps 2.5mm Fixed Lens POE</p>	 <p>CNC-7230 1.3M Outdoor IR Camera 1/3" SONY CCD Up to 1280 x 720 at 30fps 3-9mm Motorized Zoom with Auto-Focus Lens 42 IR LEDs TDN POE Audio In Video Out</p>	 <p>CNC-7350 2.0M Speedome Camera 3.0 Megapixel CMOS Sensor Up to 1920 x 1080 at 30fps 20X (4.7-94mm) Optical Zoom TDN uSD Card Up to 16G Audio In/Out Video Out</p>
--	--	---	---

*Specification may be changed without prior notice.

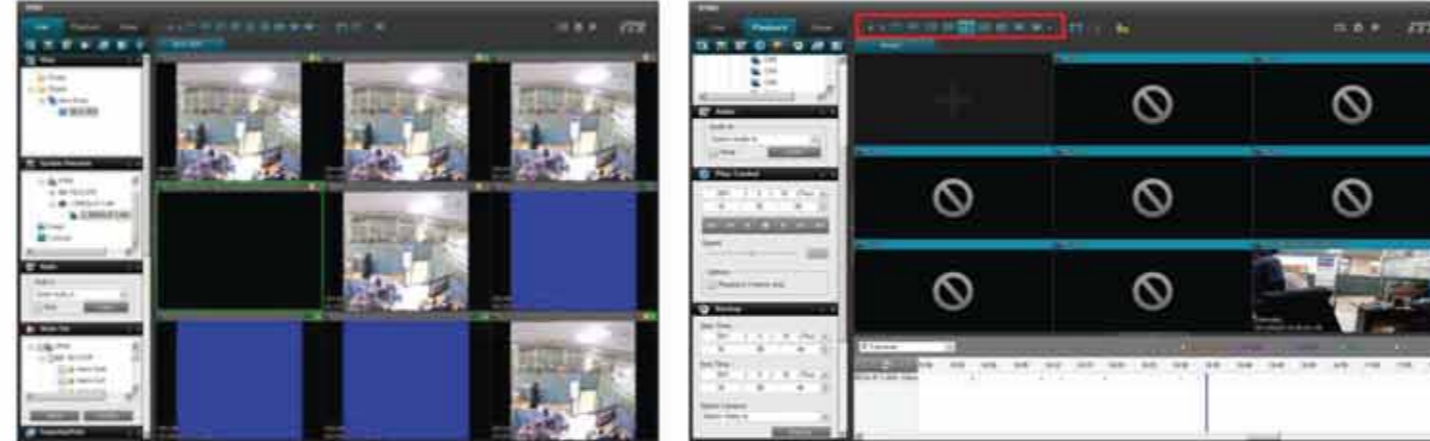
Other Accessories

eSATA External Storage



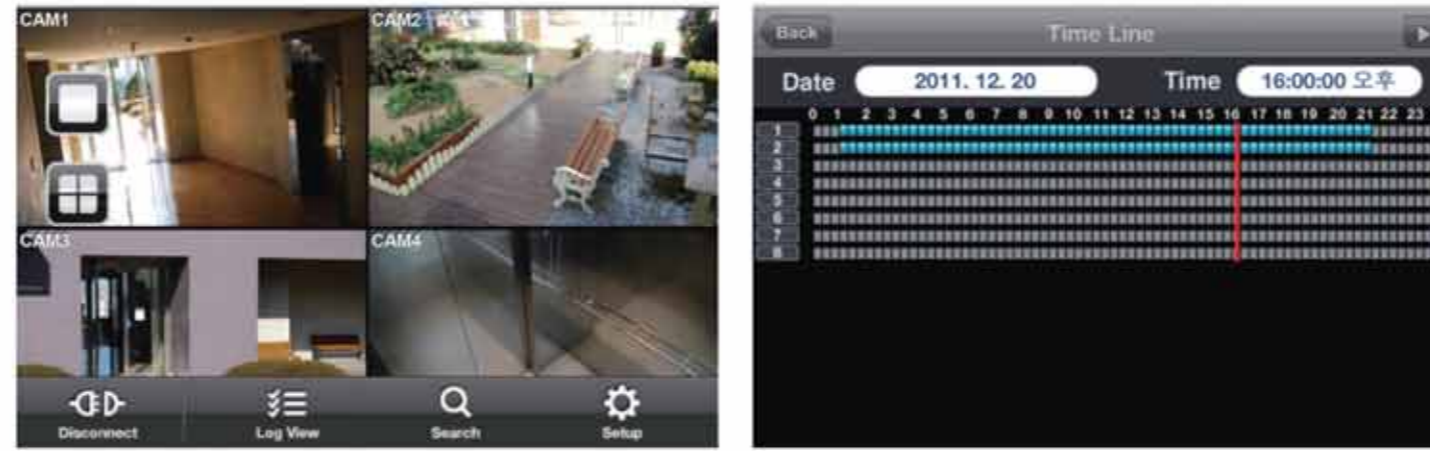
ESTG
5 HDDs eSATA RAIDs Storage Bay
3.5" SATA HDD up to 3TB each
130(W) x 262(L) x 184(H) mm
3.3kg (w/o HDD)

NVR (Network Video Recorder) Software



Live View

Playback



Mobile - Live View

Mobile - Playback

CMS (Central Monitoring System) Software

- Up to 64CH IP camera & DVR display & recording
- Search & Playback local recorded IP camera as well as remote DVR & NVR
- Event monitoring and alarm notification
- On screen PTZ control
- Two-way audio communication
- Digital zoom
- Alarm out activation
- Snap shot & print function
- Multi-monitor display
- Automatic re-connection
- Multi languages
- Export AVI backup
- Digital watermark on captured JPEG image
- E-mail and FTP transfer of snapshot image
- Support Windows with auto-switching specific video channels delay Carousel
- Megapixel camera support (1920x1080)
- Remote DVR, NVR and IP Camera setting adjustment



Authorized Dealer:



CYNICS and CYNICS logo are trademarks of CYNICS INTERNATIONAL SDN BHD MALAYSIA. All rights reserved. Note: All specifications may be changed without prior notice.



The Most Advance IP Solution In The World




4 / 8 / 16 CH Real-Time Display
Real-Time 100 / 200 / 400fps Full HD
1080p Recording For Each Channel
True Plug & Play

Full HD 1080

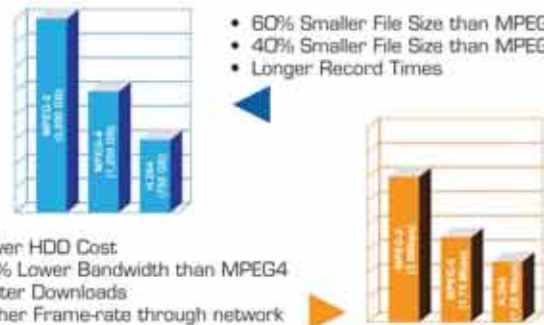
What is IP CCTV

IP based cameras are the future. They work by turning images and audio into data then transmitting over a network or Internet connection. The ultimate benefit of this over analogue CCTV systems is greater flexibility, better performance, less cabling and easier installation.



Advance Proprietary H.264 Video Compression

H.264 Technology, our advanced proprietary compression algorithm, that provides more storage on smaller media, without compromising image quality - resulting in days, weeks and even months of high-resolution video storage.



- Lower HDD Cost
- 30% Lower Bandwidth than MPEG4
- Faster Downloads
- Higher Frame-rate through network

Stable Standalone Linux Base NVR System

Stable, Reliable & Cost Effective comparable to PC system.



Quadplex

Simultaneous Live Monitoring, Record, Archiving & Network

Full DH 1080p

Real-Time Monitoring, Recording & Playback
HDMI Output



Flexible Recording Resolution

Full HD 1080p : 1920x1080, HD 720p : 1280x720 & D1 : 704x576

Dual Stream

Separate Recording & Network stream allow high recorded image without sacrificing video streaming framerate over network

Dedicated Network Cable To NVR, No Bandwidth Congestion Problem

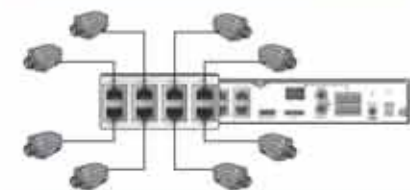
POE

1st NVR in the world with build-in Gigabit POE switch for all channels



Automatic Connection IP Address To Camera

No need to assign IP.



Easy Installation
Just 1 CAT5e to connect the camera and NVR. The CAT5e will transmit Video, Audio, Data (PTZ & Alarm) and Power

Visual Network Condition Monitoring



Watchdog For IP Cameras

Video Alarm Condition Monitoring



Alarm Monitoring Instant Playback

Instant Video Playback



Ease Time Search

- Calendar Display
- Recorded Video Status
- Multi-Channel Thumbnail Display
- Preview

Thumbnail Search

- Selection of Channel, by Hour or Minute
- Preview



Advance Archiving

- Selection of AVI or DVR original format
- Backup with codec or log
- Reserve video in HDD
- Playback reserve or backup video from HDD or USB
- Backup to USB or FTP server



Build-In Free DDNS



4/8/16CH 2 Way Communication



Web Browser

Remote view with PC Internet Explorer & Mac Safari



Remote View Via Smart Phone

Mobile phone remote view through iPhone, iPad and Android



Camera Setup

Camera setup through DVR OSD Menu or Remote Software



Easy Digital Zoom

Easy and unlimited digital zoom by scrolling a mouse during live and playback



Email Notification

DVR can be programmed to send text message to 5 E-mail account if any event occur.



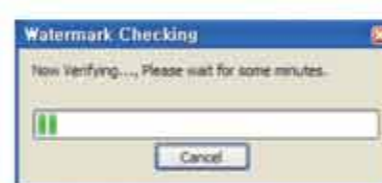
System Setup Export & Import

NVR 1st time power up, automatically prompt for Quick Setup like DVR name, language, time/date, network setting, recording frame rate/quality, format HDD.



Watermark

Before playing back recorded video using Client Software, the software will prompt for watermark checking to confirm the video has not been altered.



Support 4/8/16CH PTZ Cameras

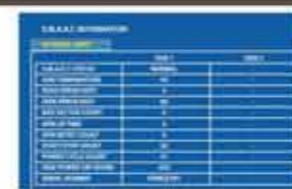
eSATA External Storage & RAID5

Model : ESTG, Support up to 5X 3TB SATA HDD



SMART HDD Health Check

HDD vital information including temperature, bad sector, disk power-on hours are constantly monitored.



Temperature Monitoring With Fan Notification

Resolution	Width	Height
CIF	352	288
D1	704	576
HD	1280	720
Full HD	1920	1080

Digital Zoom - SD (Analog) Digital Zoom - HD (720p) Digital Zoom - Full HD (1080p)

Recording Resolution



HDD Calculation

HDD Calculation using 1TB HDD, 100fps, Continuous Recording

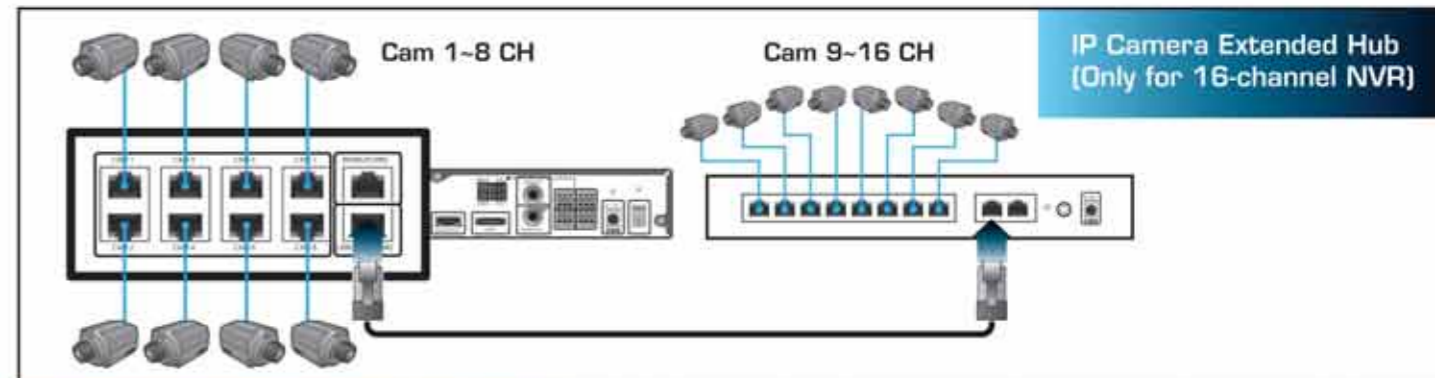
Resolution	High	Standard	Low	Lowest
Full HD	2.17	4.33	8.66	17.32
HD	2.64	5.28	10.56	21.12
D1	10.25	11.2	12.33	15.48

- Full HD 1080p (1920x1080)
- HD 720p (1280x720)
- D1 (704x480)

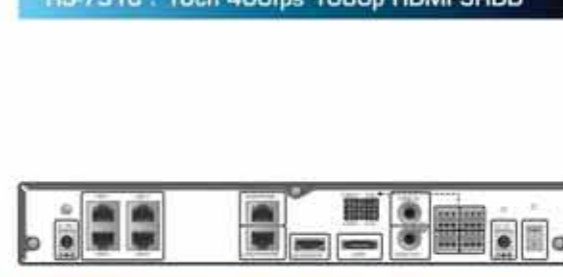
Note :
1) Pls allow +/-10% for this calculation.
2) Audio for all CH +5%



Specifications	HN-7204	HN-7208	HN-7516
Channel	4	8	16
Display	Real-Time Display For All Channels	Real-Time Display For All Channels	Real-Time Display For All Channels
Recording	Up to 100fps 1080p	Up to 200fps 1080p	Up to 400fps 1080p
Playback	4CH Simultaneous Playback up to 100fps	8CH Simultaneous Playback up to 200fps	16CH Simultaneous Playback up to 400fps
Main Monitor	Full HD 1080p HDMI	Full HD 1080p HDMI	Full HD 1080p HDMI
Audio	4CH (from IP Camera)	8CH (from IP Camera)	16CH (from IP Camera)
Audio Output	1CH	1CH	1CH
Microphone Input	1CH	1CH	1CH
Alarm In	4 (from IP Camera) + 2 (DVR)	8 (from IP Camera) + 2 (DVR)	16 (from IP Camera) + 2 (DVR)
Alarm Out	4 (from IP Camera) + 2 DVR relay	8 (from IP Camera) + 2 DVR relay	16 (from IP Camera) + 2 DVR relay
HDD Bay (Max. 3TB)	2	2	5
Weight (w/o HDD)	305(W) X 298(D) X 44(H), 4.1KG	305(W) X 298(D) X 44(H), 4.1KG	430(W) X 360(D) X 88(H), 7.5KG



HN-7516 : 16ch 400fps 1080p HDMI 5HDD



HN-7204 : 4ch 100fps 1080p HDMI 2HDD



HN-7208 : 8ch 200fps 1080p HDMI 2HDD

