

PROLINK®

www.prolink2u.com

WIRELESS
IP CAMERA

Your Inspirations.
Our Innovations.

PIC1006WN

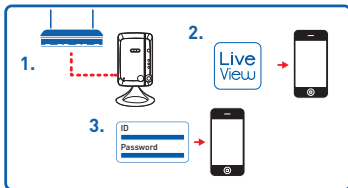
Wireless-N IP Camera with Dual Lens



DUAL LENS TECHNOLOGY



The **PROLINK® PIC1006WN Wireless-N IP camera with Dual Lens** is designed with the "user-friendly" idea deep in mind. The user can install the PIC1006WN easily on his/her home network and then access the IP Camera anywhere in the world through the accompanied video management software-mLiveView without setting some complicated DNS name or changing the router's settings. It's just a plug & play action.



60-second setup*

- 1) Plug in camera to router.
- 2) Download apps to mobile.
- 3) Key in user id and password. PIC1006WN is online in three pain-free steps with no pc required.



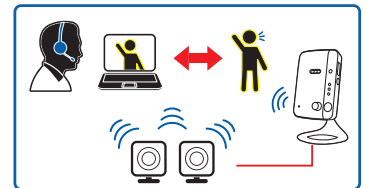
One touch WiFi Security Setup (WPS)

Easy connection to home network with Ethernet or WiFi.



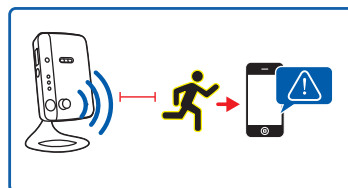
Activity Alert*

Push notification Alert, Email / FTP, Speaker Alarm.



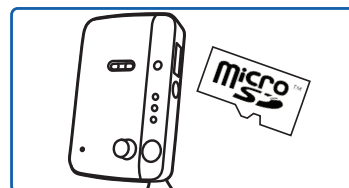
2-way Audio

With built-in microphone and support for external speakers, user can communicate with the people around the IP camera allowing application such as public address to remote worksite, checking the identity of a person before unlocking a door or talking to your loved ones at home.



Triple motion detection technology

Featuring Triple motion detection technology with triple Passive Infra-Red (PIR), smart video Sound Motion detection & Sound.



Recording, Snapshot and Playback

Recording and playback on PC, NAS, MicroSD and Smartphone. Using H.264 video compression technology to maximize recording space and conserve internet bandwidth.

Compatible with :



Windows 8



* Terms & Conditions apply.



PIC1006WN

DUAL LENS Wireless-N IP Camera

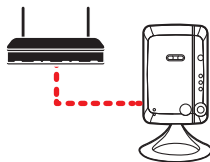
TRUE Plug-and-Play with Zero Configuration

True Plug-and-Play solution with no complicated router settings and network configuration. All you need to do is to connect **PIC1006WN** to the internet network and key in the username and password to get started.

As Easy As 1-2-3

Step 1 : Connect

Connect the camera to the router through wired or use one touch WiFi security setup (WPS) for wireless connection



Step 2 : Install

Mobile Access (Android & iOS):

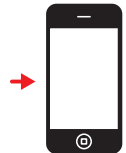
Install the free application mLiveView on your smartphones/ tablets

PC Viewing (Windows):

Install LiveView software from CD (provided in the Setup CD)

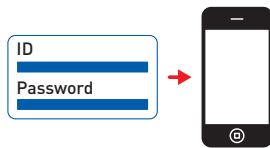
Web Access (Internet Explorer):

Open <http://www.fida.com/online.html>



Step 3 : View

Key in your camera ID and password
Ready for viewing



*Push Notification is only available in Android, iOS mLiveView PRO and HD PRO version.

** External speaker is required.

Specifications

Interface

RJ-45 Ethernet 10/100Mbps, Auto-Negotiation (MIDX)
Wireless IEEE 802.11 b/g/n

Max. Connection

Up to 36 cameras and 20 unicast users simultaneously

Recording

Built-in Micro-SD slot (up to 32GB); Direct recording to NAS Storage or local PC/ Laptop

Image Sensor

RGB VGA 1/4 inch CMOS; Day and Night Separate Sensors;
Automatic Exposure/ White Balance/ Gain/ Brightness control

Light Sensitivity

0.2 Lux (IR LED off); 0 Lux (with 10 meters IR LED on);
Automatically turn on the IR LED in low light environment

Lens

4.5mm; F1.9; Viewing angle: 55.6; Fixed iris; Focus range: 30cm to infinity; Two separate lenses, one for Day and one for Night

Buttons

Factory default reset; Automatic WiFi security setup (WPS)

Indicators

LED indication for Internet connection, Ethernet connection and SD card recording

Video

H.264 (MPEG-4 AVC) compression; Max. resolution VGA 640 x 480;
Separate frame rate/resolution/bandwidth setting for streaming to PC and mobile

Audio

Built-in microphone for audio monitoring; 3.5mm line out jack for external speaker;
Audio compression: G.711

Alert And Monitoring Mechanisms

Events triggered by PIR sensor (abrupt changes in temperature) and sound detection;
Notification via Email or FTP server; Push notification on IOS and Android devices*

Physical Specifications

Dimensions - 68(L) x 25(W) x 95(H) mm; Weight - 280g (incl. Camera bracket)

Environment Specifications

Operating Temperature: 0-50c; Humidity: 20-80% RH (non-condensing)



<http://www.facebook.com/globalprolink>

Compatible with:



System Requirements:

Windows XP/Vista/7/8, Mac*, Linux

*Support for Intel-based Mac only



Distributed by:

Fida Systems (M) Sdn Bhd

Jatan USJ 1/31, 47600 Subang Jaya, Selangor Darul Ehsan

Tel : 03. 8024 9151 Technical Support : 03. 8023 9151

Email/MSN : sales@prolink2u.com Business Hours : 9am-6pm(Mon-Fri)

PROLINK® is a trademark of Fida International (S) Pte Ltd and is manufactured under its authority. Microsoft®, Windows®, Windows® 98SE/ME/2000/XP/Vista/7/8 are either registered trademarks or trademarks of Microsoft Corporation. Mac and the Mac logo are trademarks of Apple, Inc., registered in the U.S. and other countries. Linux® is a registered trademark of Linus Torvalds and Linux penguin "Tux" created by Larry Ewing and The Gimp. All other brands, products, services, logos and company names mentioned herein are trademarks of their respective owners. All specifications, designs and contents are subjected to changes without prior notice. Images are for demonstration and may vary from actual products. © Copyright 2012. PROLINK® All rights reserved.

