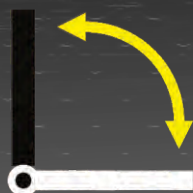


*Italianor*TM

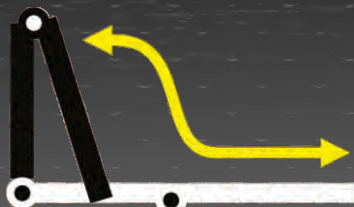
ITALIA LA TECNOLOGIA



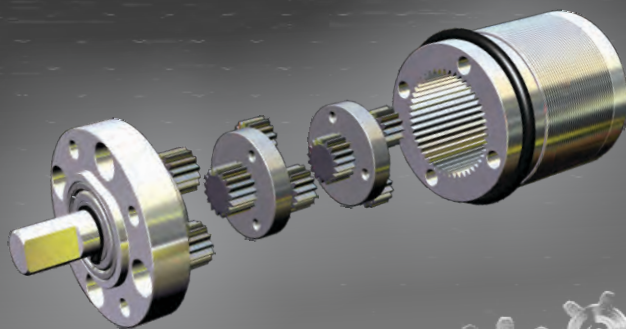
Swing / Folding Gate Linear Actuator



SWING GATE



FOLDING GATE

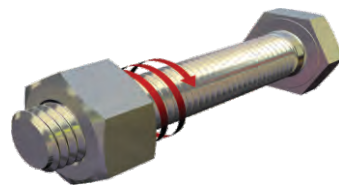


Technical Specifications:

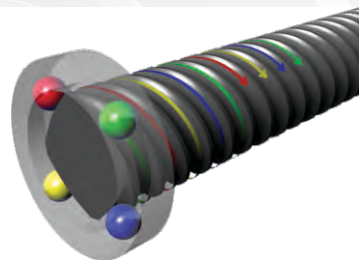
MAIN POWER REQUIREMENTS	220~240VAC 50/60Hz 1 PHASE
OPERATING VOLTAGE	24VDC FOR NORMAL SPEED 12VDC FOR ENDING SPEED
MOTOR POWER CONSUMPTION	25watt PER ARM
DRIVING METHOD	4 START BALL SCREW DRIVEN PISTON TYPE
GEARBOX	THREE STEPS PLANETARY REDUCER
MAX. PISTON STROKE	300mm
MAX. PISTON SPEED	30mm/sec
OPERATING CYCLE	7 SECOND PER 90° (APPROX.)
MAX. WEIGHT OF GATE	350KG PER WING
MAX. LENGTH OF GATE	3.5 METER PER WING
CONTROL DEVICE	MICROCOMPUTER BASED
SAFETY CLUTCH	LATEST EXCLUSIVE LINEAR 4 START BALL SCREW ENHANCE 4 TIME FAST OF STABLE CURRENT SENSING TO ELECTRONIC CONTROLLER
SAFETY BARRIER	INFRARED BEAM SENSOR (OPTIONAL)
BACKUP BATTERY	12V 7AH
CASING MATERIAL	WEATHERPROOF AND RUST RESISTANT CAST ALLOY
AMBIENT TEMPERATURE	0 TO +80°C
SHIPPING WEIGHT	10kg



3 STEP PLANETARY GEAR REDUCER

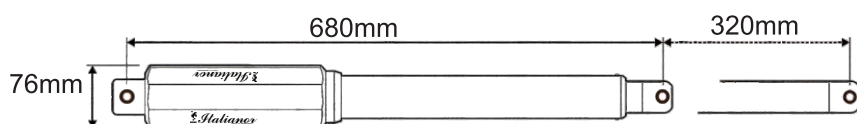


CONVENTIONAL 1 START SCREW



HIGH PRECISION 4 START BALL SCREW

In the interest of product improvements, specifications are subject to change without prior notice.



Professional: