

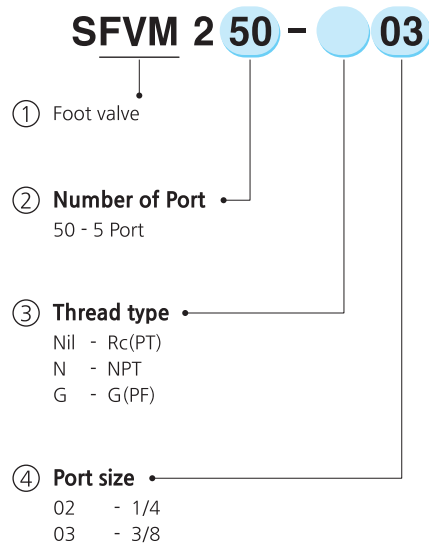
# Pilot type Foot Valve (SFVM)

## SFVM250 Series

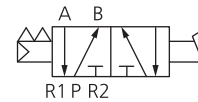


SFVM 250

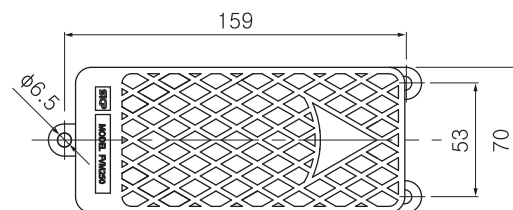
### How to order



### Symbol



### Dimensions (mm)



### Specification

Model	SFVM250-02	SFVM250-03
Fluid	Compressed Air	
Max. operating pressure	0~10bar (0~1MPa)	
Ambient and Media temp.	-5 ~ 60°C (No freezing)	
Effective orifice(Cv)	19mm <sup>2</sup> (1.0)	45mm <sup>2</sup> (2.4)
Lubrication	Not required	
Port size	1/4	3/8

