

Floating Joint (SJ)

SJ(F)10~140 Series

- SJ series compensate displacement, imbalance and equilibrium deficiency of the rotating axle between a cylinder and the other component.



How to order

SJ F 40 - 14-150

① Floating Joint

② **Mounting style**
 Nil - Standard
 F - Flange type

③ **Applicable bore size(mm)**

| Model | Symbol | Applicable bore size(mm) |
|----------|-----------|--------------------------|
| Standard | 10 | 10 |
| | 15 | 10 · 15 |
| | 20 | 20 |
| | 30 | 25 · 30 |
| | 40 | 40 |
| | 63 | 50 · 63 |
| | 80 | 80 |
| | 100 | 100 |
| 140 | 125 · 140 | |

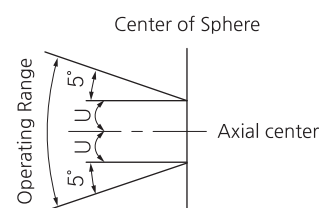
④ **Thread nominal size(Standard)**

| Nominal thread size | Applicable cylinder nominal thread size |
|---------------------|---|
| 5-080 | M4 x 0.8 |
| 6-100 | M6 x 1 |
| 8-125 | M8 x 1.25 |
| 10-125 | M10 x 1.25 |
| 14-150 | M14 x 1.5 |
| 18-150 | M18 x 1.5 |
| 22-150 | M22 x 1.5 |
| 26-150 | M26 x 1.5 |
| 30-150 | M30 x 1.5 |

Specification

| | |
|--------------------|---|
| Operating Pressure | Pneumatic cylinder : 10bar(1MPa) or less |
| | Hydraulic cylinder : 35bar(3.5 MPa) or less |
| Mounting | Standard, Flange type |

Range in Use

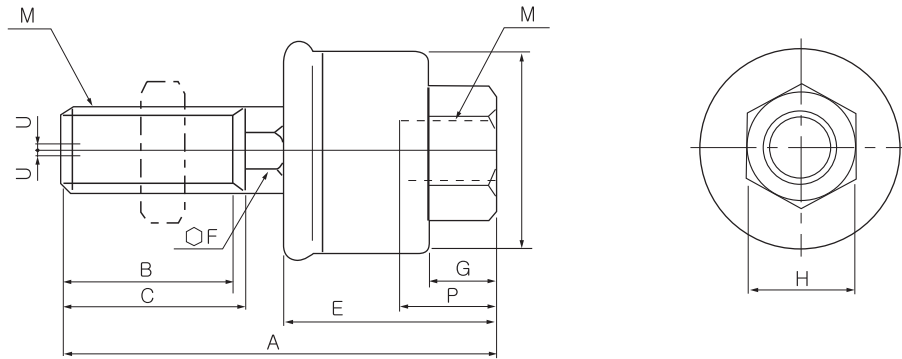


Precautions

- ① To use a floating joint to connect the cylinder rod to a driven body, secure it in place by applying a torque that is appropriate for the thread size. Also, if there is a risk of loosening during operation, take measures to prevent loosening, such as using a locking pin or thread adhesive. In the event that the connected portion becomes loose, the driven body might lose control or fall off, leading to equipment damage or injury to personnel.
- ② Do not use for rotational applications, because it is not a fitting designed for rotational axis.
- ③ High strength adhesive is applied to the portion of the connection that is threaded to prevent it from loosening, and it must not be disassembled. If it is forcefully disassembled, it could lead to damage.

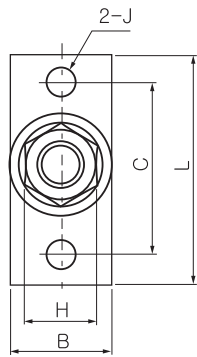
DIMENSIONS (mm)

SJ 10~140

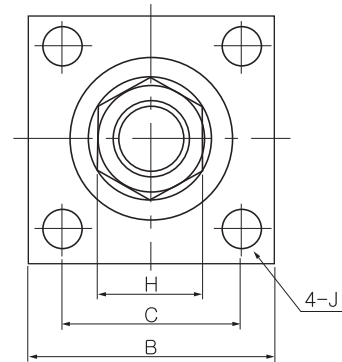
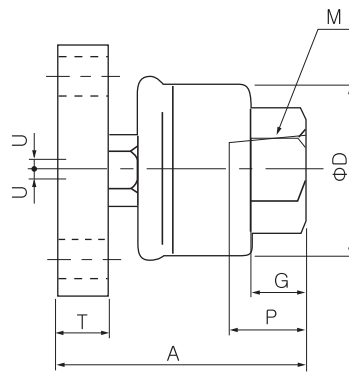


| Model | M | | A | B | C | D | E | F | G | H | Max. Depth of screw(P) | Permitted eccentricity(U) | Max. Operating compression(kgf) | Weight(g) |
|--------------|----------|-------|-----|----|----|----|------|----|------|----|------------------------|---------------------------|---------------------------------|-----------|
| | Diameter | Pitch | | | | | | | | | | | | |
| SJ10-4-070 | 4 | 0.7 | 34 | 12 | 14 | 16 | 2 | 6 | 5 | 10 | 5.5 | 0.5 | 5.4 | 20 |
| SJ15-5-080 | 5 | 0.8 | 34 | 12 | 14 | 16 | 2 | 6 | 5 | 10 | 7 | 0.5 | 12.3 | 22 |
| SJ15-6-100 | 6 | 1 | 34 | 12 | 14 | 16 | 2 | 6 | 5 | 10 | 7 | 0.5 | 12.3 | 24 |
| SJ20-8-125 | 8 | 1.25 | 44 | 17 | - | 22 | 4.5 | 7 | 7 | 13 | 8 | 0.5 | 110 | 54 |
| SJ30-10-125 | 10 | 1.25 | 50 | 19 | - | 25 | 5 | 8 | 8 | 17 | 9 | 0.5 | 250 | 86 |
| SJ40-14-150 | 14 | 1.5 | 60 | 20 | - | 32 | 6 | 11 | 11 | 22 | 13 | 0.75 | 600 | 182 |
| SJ63-18-150 | 18 | 1.5 | 75 | 25 | - | 42 | 7.5 | 14 | 13.5 | 27 | 15 | 1 | 1,100 | 404 |
| SJ80-22-150 | 22 | 1.5 | 90 | 29 | - | 52 | 9.5 | 19 | 16 | 32 | 18 | 1.25 | 1,800 | 700 |
| SJ100-26-150 | 26 | 1.5 | 110 | 35 | - | 63 | 11.5 | 24 | 20 | 41 | 24 | 2 | 2,800 | 1,250 |
| SJ140-30-150 | 30 | 1.5 | 153 | 42 | 45 | 79 | 14 | 30 | 22 | 46 | 38 | 2.5 | 5,400 | 2,952 |

SJ F30~F40



SJ F63~F140



| Model | M | | A | B | L | C | D | E | F | G | H | Max. Depth of screw(P) | Permitted eccentricity(U) | Max. Operating compression(kgf) | Weight(g) |
|----------------|----------|-------|-----|-----|----|----|----|----|-----|------|----|------------------------|---------------------------|---------------------------------|-----------|
| | Diameter | Pitch | | | | | | | | | | | | | |
| SJ F30-10-125 | 10 | 1.25 | 40 | 25 | 52 | 40 | 25 | 6 | 6.6 | 8 | 17 | 9 | 0.5 | 250 | 128 |
| SJ F40-14-150 | 14 | 1.5 | 49 | 32 | 70 | 52 | 32 | 9 | 9 | 11 | 22 | 13 | 0.75 | 440 | 292 |
| SJ F63-18-150 | 18 | 1.5 | 62 | 65 | - | 45 | 42 | 9 | 9 | 13.5 | 27 | 15 | 1 | 1,100 | 680 |
| SJ F80-22-150 | 22 | 1.5 | 77 | 75 | - | 55 | 52 | 16 | 11 | 16 | 32 | 18 | 1.25 | 1,800 | 1,206 |
| SJ F100-26-150 | 26 | 1.5 | 94 | 90 | - | 65 | 63 | 19 | 11 | 20 | 41 | 24 | 2 | 2,800 | 2,170 |
| SJ F140-30-150 | 30 | 1.5 | 131 | 125 | - | 82 | 79 | 25 | 18 | 22 | 46 | 38 | 2.5 | 3,600 | 5,420 |

- SAS
- SQE
- SJ
- SRJ