

PNEUMATIC PRESS



Features

- * The cylinder is identical to ISO6431 standard.
- * Magnet is optional accessory, and sensor switch is available to be installed.
- * Model no. P100 is light and compact, suitable for small size press.
- * The cushions are installed on both ends for stable operation.
- * We accept the order without cushions, please make a note of it on purchase order.
- * Strong body and simple maintenance.
- * It is available to install quick exhaust valve for speed up operation.
- * Guide rod is installed for prevention of piston rod rotate.
- * Hand control or foot control at your selection.



How to order

P100	-	60	S	2
Pneumatic press		Series	Solenoid	Voltage
P100 P200A,B,C P300		Type Stroke	Single solenoid	1 110VAC 2 220VAC 9 24VDC
		60 50mm		
		100 50mm		
		200 100mm		
		300 100mm		
		500 100mm		
		900 100mm		

Specifications

Model	P100-60	P100-100	P200-100	P200-200	P200-300	P300-500	P300-900
Port size	1/4"		3/8"			1/2"	
Fluid	Compressed air						
Stroke	50mm		50mm	100mm		100mm	
Cylinder bore size	φ 50mm	φ 63mm	φ 63mm	φ 80mm	φ 100mm	φ 125mm	φ 160mm
Stroke adjustment	25.5mm						
Air consumption liter	1.2	2	4	6	10	15	32
Operating pressure range	1.5~9.5 kgf/cm ²						
Working height	150		A:200,B:270,C:270			250	
Ambient temperature	-10°C~60°C						
Voltage tolerance	±10%						
Standard voltage	220VAC, 110VAC, 24VDC						
Weight	20 kg	20.3 kg	39 kg	43 kg	47 kg	90 kg	105 kg

Theoretic force of press

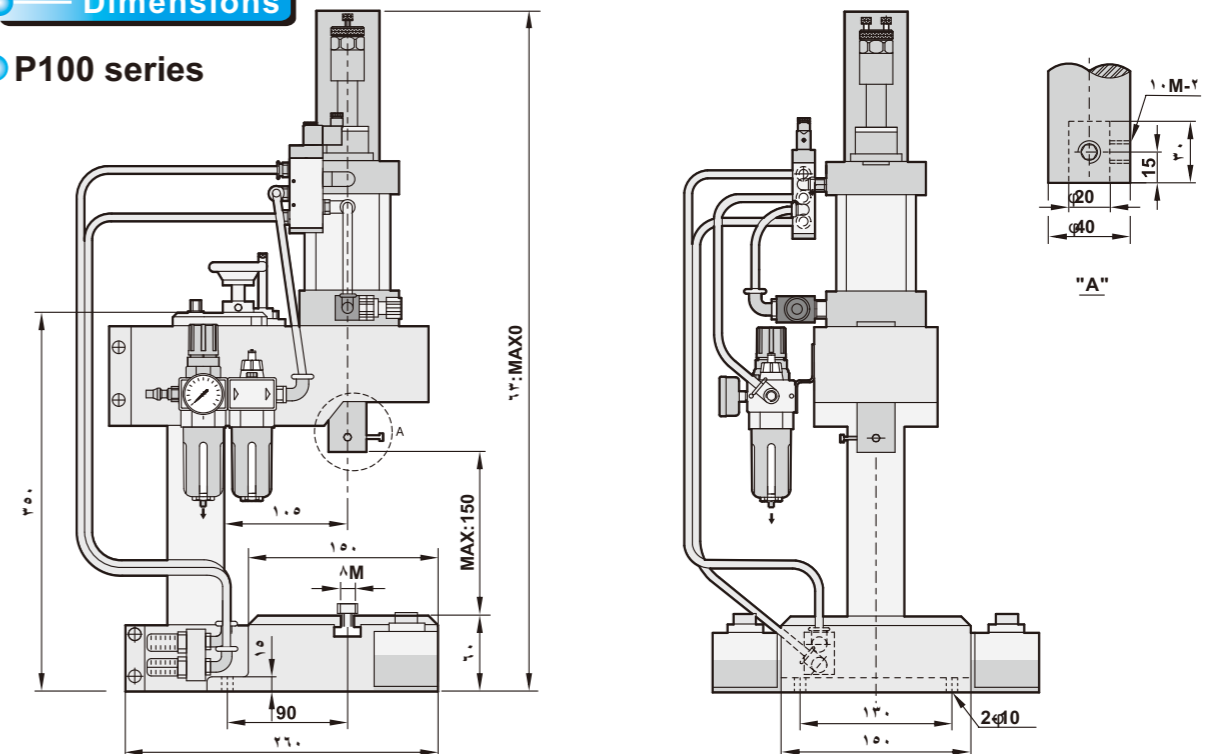
Operating pressure			P100-60			P100-100		
			Theoretic force of press			Theoretic force of press		
Mpa	KG	PSI	N	KG	LB	N	KG	LB
0.4	4	57	774	79	174	1255	125	275
0.5	5	71	960	98	216	1523	156	344
0.6	6	85	1156	118	260	1833	187	412
0.7	7	100	1343	137	302	2136	218	480

Operating pressure			P200-100			P200-200			P200-300		
			Theoretic force of press			Theoretic force of press			Theoretic force of press		
Mpa	KG	PSI	N	KG	LB	N	KG	LB	N	KG	LB
0.4	4	57	1225	125	275	1775	181	400	2883	294	649
0.5	5	71	1523	156	344	2226	227	500	3609	368	811
0.6	6	85	1833	187	412	2668	272	600	4335	442	974
0.7	7	100	2136	218	480	3109	317	700	5051	415	1136

Operating pressure			P300-500			P300-900		
			Theoretic force of press			Theoretic force of press		
Mpa	KG	PSI	N	KG	LB	N	KG	LB
0.4	4	57	4413	450	992	7879	804	1771
0.5	5	71	5521	563	1241	9849	1105	2213
0.6	6	85	6620	675	1488	11819	1206	2656
0.7	7	100	7728	788	1737	13789	1407	3099

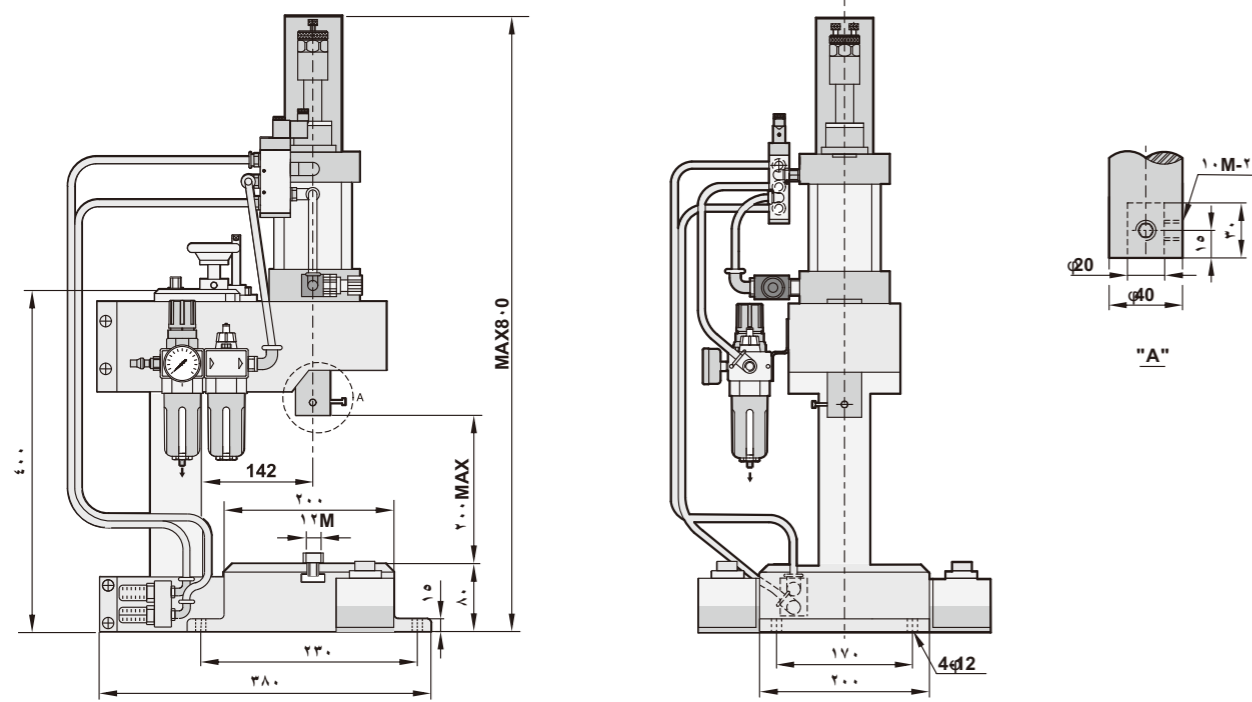
Dimensions

P100 series



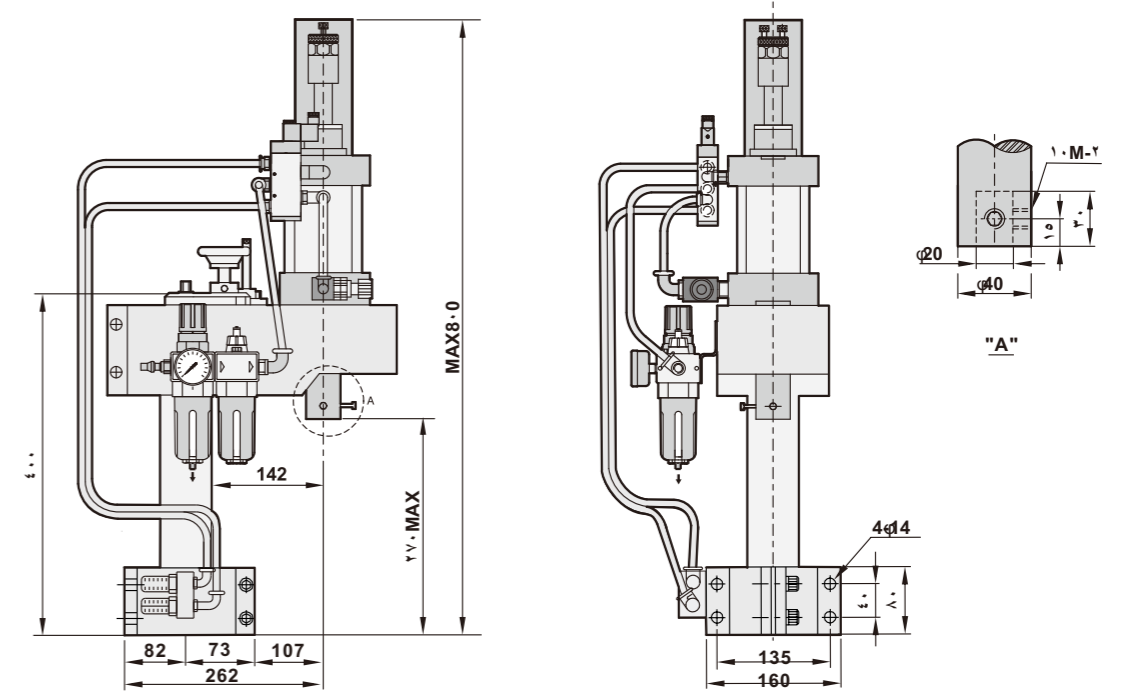
Dimensions

P200A series

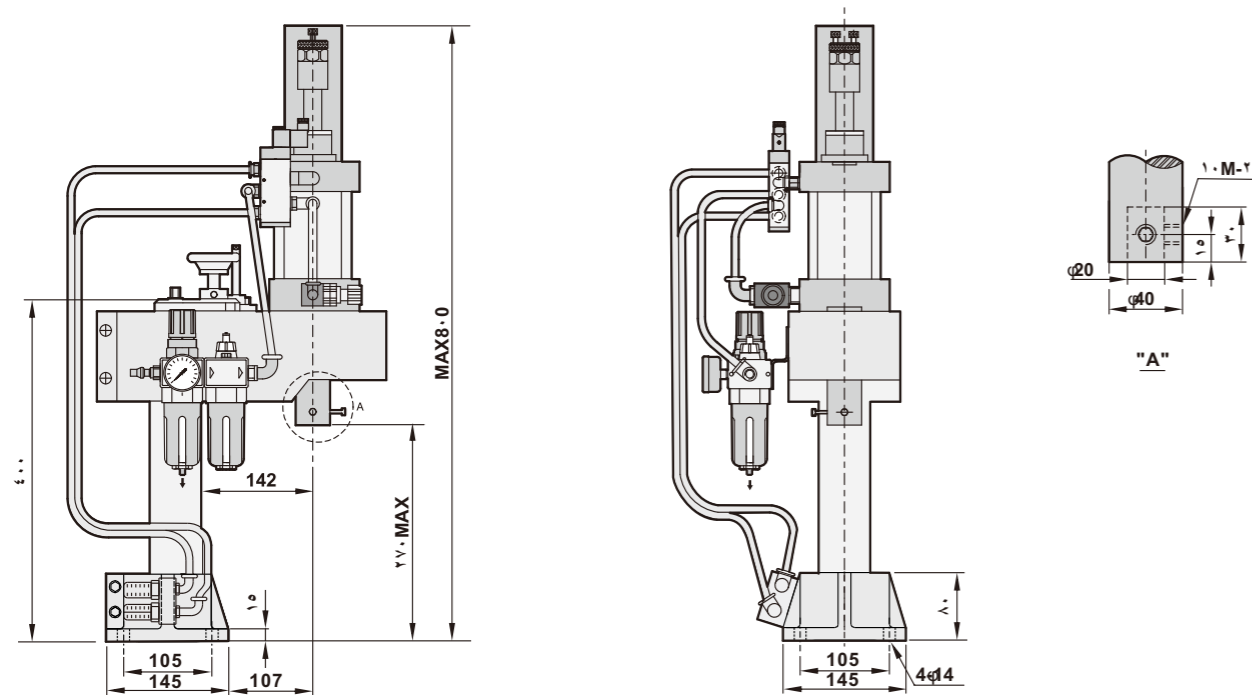


Dimensions

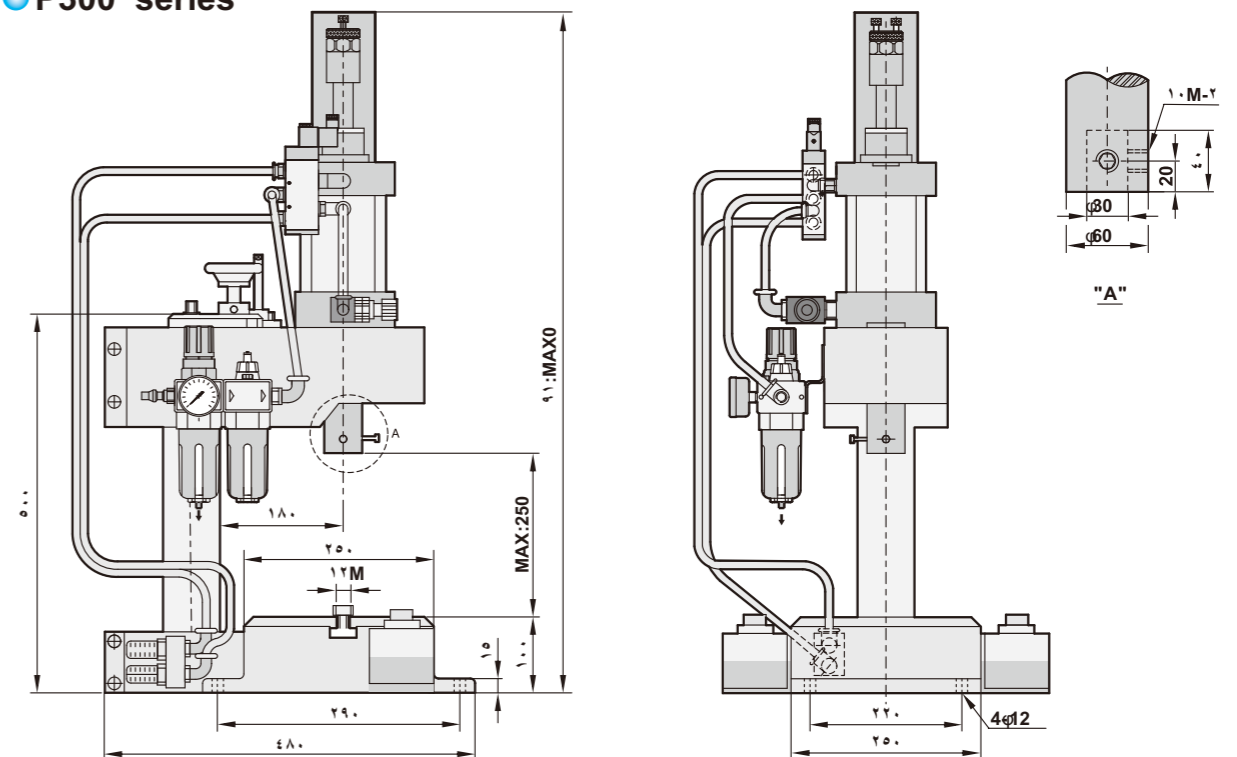
P200C series



P200B series



P300 series



Introduction

ISO6431 cylinder adopts high quality seals made in Germany, it features stable, smooth and durable operation.

For stroke adjustment, please loosen fixed screws, then lock screws after complete adjustment.

Specific manifold and Namur valve.

Counter for quantity control of production.

Solenoid valve operation can be automatic or manual.

Timer for working time control.

Speed control valve for working speed setting.

Timer switch. Switch on is for automatic operation, and switch off is for manual operation.

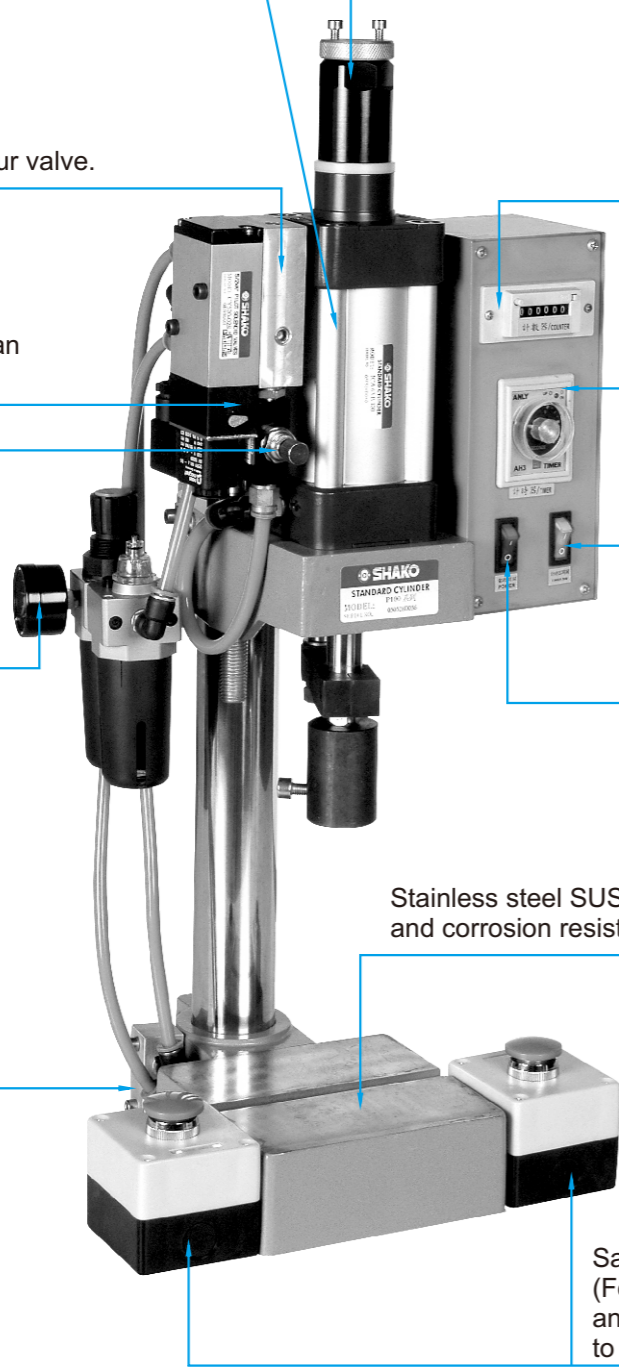
FRL air treatments ensure stable air quality.

Power switch.

Silencer is for pollution and noise reduction.

Stainless steel SUS316 working table is strong and corrosion resistance .

Safety button
(For safety concerns, press left and right button at same time to operate.)



A series of horizontal dashed lines for taking notes, spanning the right half of the page.

