



# FB-2862C

## Ceiling Subwoofer



Smiles  
for the  
Public

Low frequency range  
& high-quality sound output

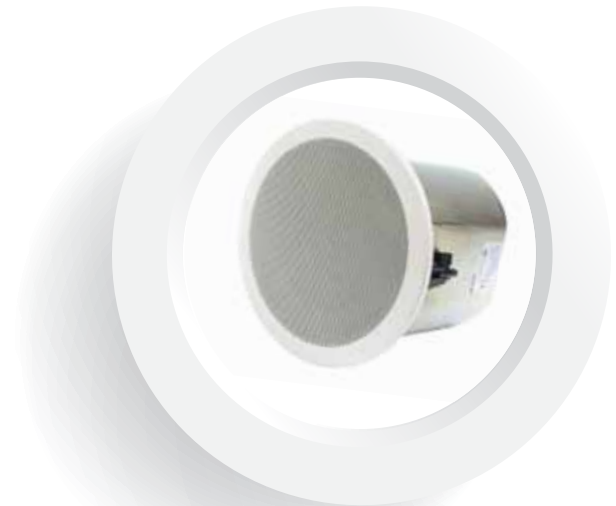
## FB-2862C Ceiling Subwoofer

TOA's ceiling subwoofer FB-2862C offers an attractive exterior design created by an interior designer to blend it naturally to any architectural space, enhancing the immediate area's sense of harmony. The bass reflex speaker system designed to provide low frequency range and high-quality sound output, ideal for locations with high ceiling or places that requires true-to-life sounds. The FB-2862C permits versatile mounting to match a wide range of applications and installation locations with the use of its optional mounting hardware.

### Key Features:

- 16 cm (6.5") cone-type, 60W continuous
- Tapping switch allows for 70V/100V or 8Ω operation
- Rotating grille for quick & convenient installation
- Low pass filter with overload protection

### Installation Example



### Specifications

Model	FB-2862C AS
Rated Input	60W (High Impedance)
Power Handling Capacity	Continuous: 60W (8Ω) (IEC60268-5), Program: 120W (8Ω)
Impedance	100V line: 170Ω (60W), 330Ω (30W), 670Ω (15W), 3.3kΩ (3W) 70V line: 83Ω (60W), 170Ω (30W), 330Ω (15W), 670Ω (7.5W), 3.3kΩ (1.5W) 25V line: 83Ω (7.5W), 170Ω (3.7W), 330Ω (1.9W), 670Ω (0.9W), 3.3kΩ (0.2W) 8Ω (120W)
Sound Pressure Level	87dB (1W,1m) installation in ½ free sound field (Measured by installing the unit in the center of a ceiling or wall) 81dB (1W,1m) installation in free sound field (Measured in anechoic chamber)
Frequency Response	60-250Hz (-10dB) Installation in ½ free sound field (Measured by installing the unit in the center of a ceiling or wall)
Speaker Component	Low frequency: 16 cm (6.5") cone-type
Mounting Hole	φ 250mm (Maximum ceiling thickness: 37mm)
Input Terminal	Removable locking connector with screw-down terminals (2 input terminals & 2 bridge terminals)
Usable Cable	Solid copper wire: φ0.5 – φ1.6mm (equivalent to AWG No. 24-14) Stranded copper wire: 0.2 - 2.5mm <sup>2</sup> (equivalent to AWG No. 24-14)
Finish	Enclosure: Steel plate, plating, Baffle: Fire-resistant ABS resin (UL-94 V-0), black, Rim: Fire-resistant ABS resin (UL-94- V-0), white (RAL 9016), Punched net: Steel plate, white (RAL 9016) paint
Dimensions	φ280 x 198 (D) mm (φ11" x 7.79" )
Weight	6.3kg (including mounting accessory)
Accessory	Grille x 1, Ceiling reinforcement x 1, Safety wire x 1, Paper pattern x 1
Option	Anchor hanging bracket: HY-AH1, Tile Bar Bridge: HY-TB1



Like us on Facebook  
facebook.com/TOAasiapacific



TOA Electronics Pte Ltd

www.toa.com.sg

Specifications are subject to change without notice.  
Printed in Singapore (65) 865-1215-06A