



Wall Mount Series

P0950WM - 9U

G0950WM - 9U



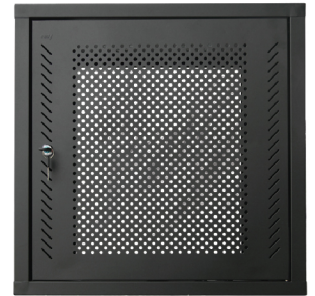
GV INDUSTRIES SDN. BHD

G-Series



PERSPEX WITH FRAME DOOR

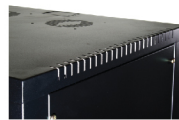
P-Series



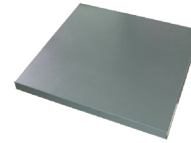
FULL PERFORATED DOOR

Features & Specifications

- Flexible PERFORATED and PERSPEX front door
- Side panels
- 19" server compatible panel mounting members
- 20 sets of M6 caged nuts & screws
- 13A power point channel complete socket
- High quality epoxy powder coating



Top Cover Vented Design



Equipment Tray



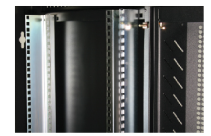
3 Gang Power Distribution



Earthing cable



Side Panel Latch



19" Panel Mounting

Model	Capacity (U)	Height (mm)	Width (mm)	Depth (mm)	Packing Dimension (H*W*D)	Weight (kg)
P0950WM	9	467	600	500	477 x 610 x 510	14.5
G0950WM	9	467	600	500	477 x 610 x 510	15

Black
 Grey
 Beige

* P = Perforated door, G = Perspex with frame

* Customized sizes available upon request

GV INDUSTRIES SDN. BHD

NO. 28 & 30, Jalan TS 6/7, Taman Perindustrian Subang,
 Taman Indah Subang Uep, 47150 Subang Jaya,
 Selangor Darul Ehsan. E-mail: sales@gvisb.com.my
 +603 - 8081 2216 Website: www.gvisb.com.my

Penang Branch

737-6-9, Sri Nibong Complex,
 Jalan Sultan Azlan Shah,
 11900 Penang
 +604 - 642 8753

Johor Branch

No.49 & 49A, Jalan Pulai 23,
 Taman Pulai Utama, 81300
 Skudai, Johor, Malaysia
 +607 - 520 5236