

CORROSION RESISTANCE CHART 耐藥品性一覽表

CHEMICAL NAME 藥品名	CONCENTRATION 濃度 %	TEMPERATURE 溫度 °C	BODY MATERIAL 泵浦本體材質			SEAL MATERIAL 軸封材質				RUBBER MATERIAL 橡膠材質		
			FRPP	CFRPP	PVDF	Ceramic	Carbon	Sic	NBR	EPT	VITON	
H ₂ SO ₄ Sulfuric acid 硫酸 H ₂ SO ₄	30	40	●	●	●	●	●	●	●	●	●	●
		60	●	●	●	●	●	●	●	●	●	
		95	●	●	●	●	●	●	●	●	●	
HCL Hydrochloric acid 鹽酸 HCL	15	40	●	●	●	●	●	●	●	●	●	●
		60	●	●	●	●	●	●	●	●	●	
		80	●	●	●	●	●	●	●	●	●	
HNO ₃ Nitric acid 硝酸 HNO ₃	20	40	●	●	●	●	●	●	●	●	●	●
		60	●	●	●	●	●	●	●	●	●	
		80	●	●	●	●	●	●	●	●	●	
H ₃ PO ₄ Phosphoric acid 磷酸 H ₃ PO ₄	25	40	●	●	●	●	●	●	●	●	●	●
		60	●	●	●	●	●	●	●	●	●	
		80	●	●	●	●	●	●	●	●	●	
NaOCl Sodium Hypochlorite 次氯酸鈉 NaOCl	10	40	●	●	●	●	●	●	●	●	●	●
		60	●	●	●	●	●	●	●	●	●	
		80	●	●	●	●	●	●	●	●	●	
HF Hydrofluoric acid 氫氟酸 HF	25	40	●	●	●	●	●	●	●	●	●	●
		60	●	●	●	●	●	●	●	●	●	
		80	●	●	●	●	●	●	●	●	●	
H ₂ O ₂ Hydrogen peroxide 雙氧水 H ₂ O ₂	10	40	●	●	●	●	●	●	●	●	●	●
		60	●	●	●	●	●	●	●	●	●	
		80	●	●	●	●	●	●	●	●	●	
NaOH Caustic soda 氫氧化鈉 NaOH	45	40	●	●	●	●	●	●	●	●	●	●
		60	●	●	●	●	●	●	●	●	●	
		80	●	●	●	●	●	●	●	●	●	
FeCl ₃ Ferric chloride 氯化鐵 FeCl ₃	40	40	●	●	●	●	●	●	●	●	●	●
		60	●	●	●	●	●	●	●	●	●	
		80	●	●	●	●	●	●	●	●	●	
Cu(CN) ₂ Copper Cyanide 氰化銅 Cu(CN) ₂	40	40	●	●	●	●	●	●	●	●	●	●
		60	●	●	●	●	●	●	●	●	●	
		80	●	●	●	●	●	●	●	●	●	
ZnO Zinc Oxide 氧化鋅 ZnO	40	40	●	●	●	●	●	●	●	●	●	●
		60	●	●	●	●	●	●	●	●	●	
		80	●	●	●	●	●	●	●	●	●	
NiSO ₄ Nickel Sulfate 硫酸鎳 NiSO ₄	40	40	●	●	●	●	●	●	●	●	●	●
		60	●	●	●	●	●	●	●	●	●	
		80	●	●	●	●	●	●	●	●	●	

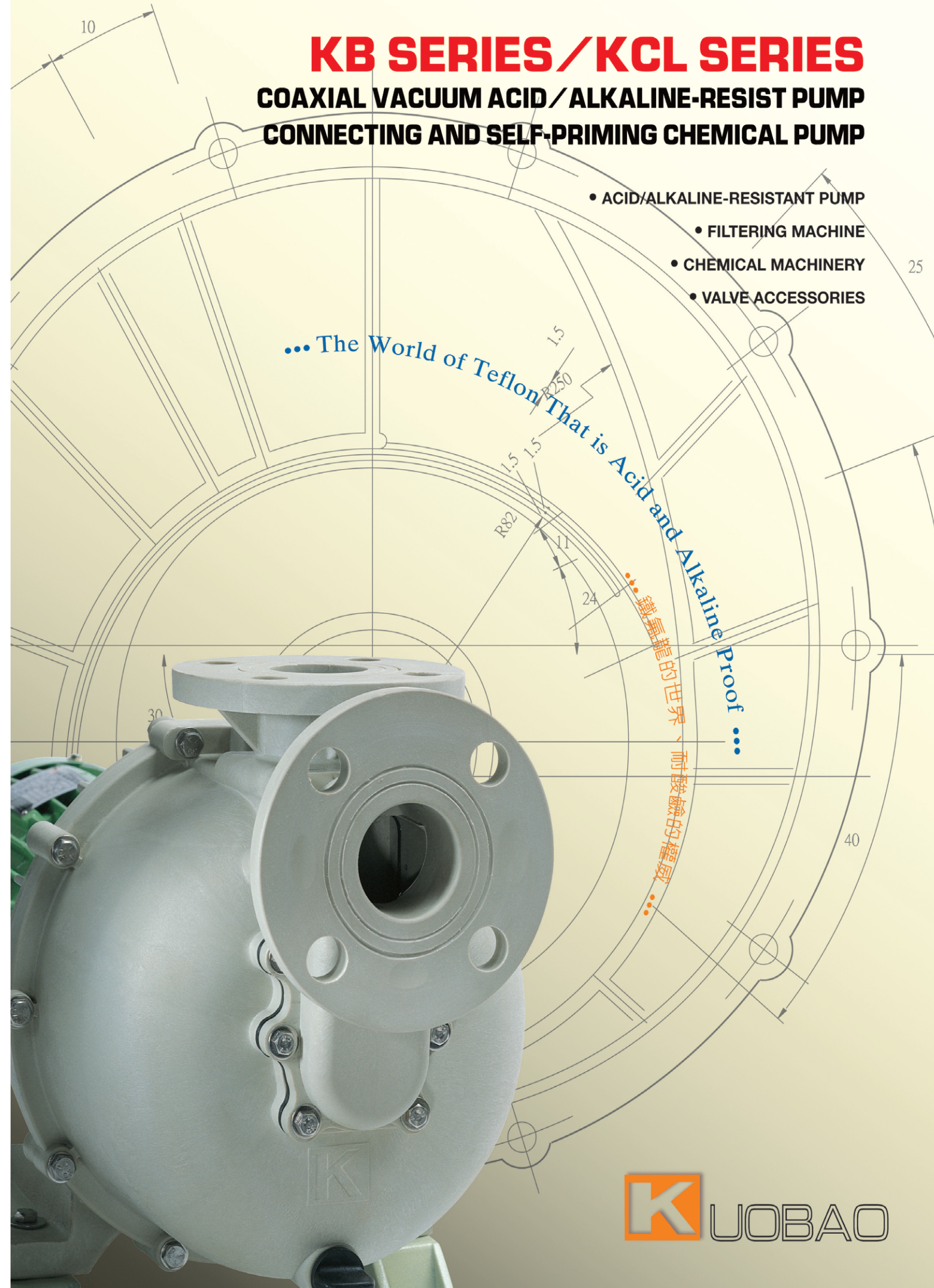
● EXCELLENT 優良 ○ GOOD 尚好 △ NOT GOOD 不佳 × BAD 差

* Specifications and other features are subject to change without notice.
* 本公司對產品規格、設計時在不影響研究改進、上述規格若有變更，恕不另行通知。

Klang Office:
25 Jalan Batu Nilam 17,
Bandar Bukit Tinggi 2,
41200 Klang, Selangor,
Malaysia.
Tel:03-33233462
Fax:03-33263129
H/P:012-3276682
Email:sales@cosmic-engrg.com

JB Office:
#01-1AB, Block A, Business Suite Level,
Datin Haimah Condominium,
Jalan Datin Halimah,
80350 Larkin, Johor Bahru,
Malaysia.
Tel:012-7236336
Fax:07-2344801
Email:cosmic.engg09@gmail.com

※版權所有 翻印必究※



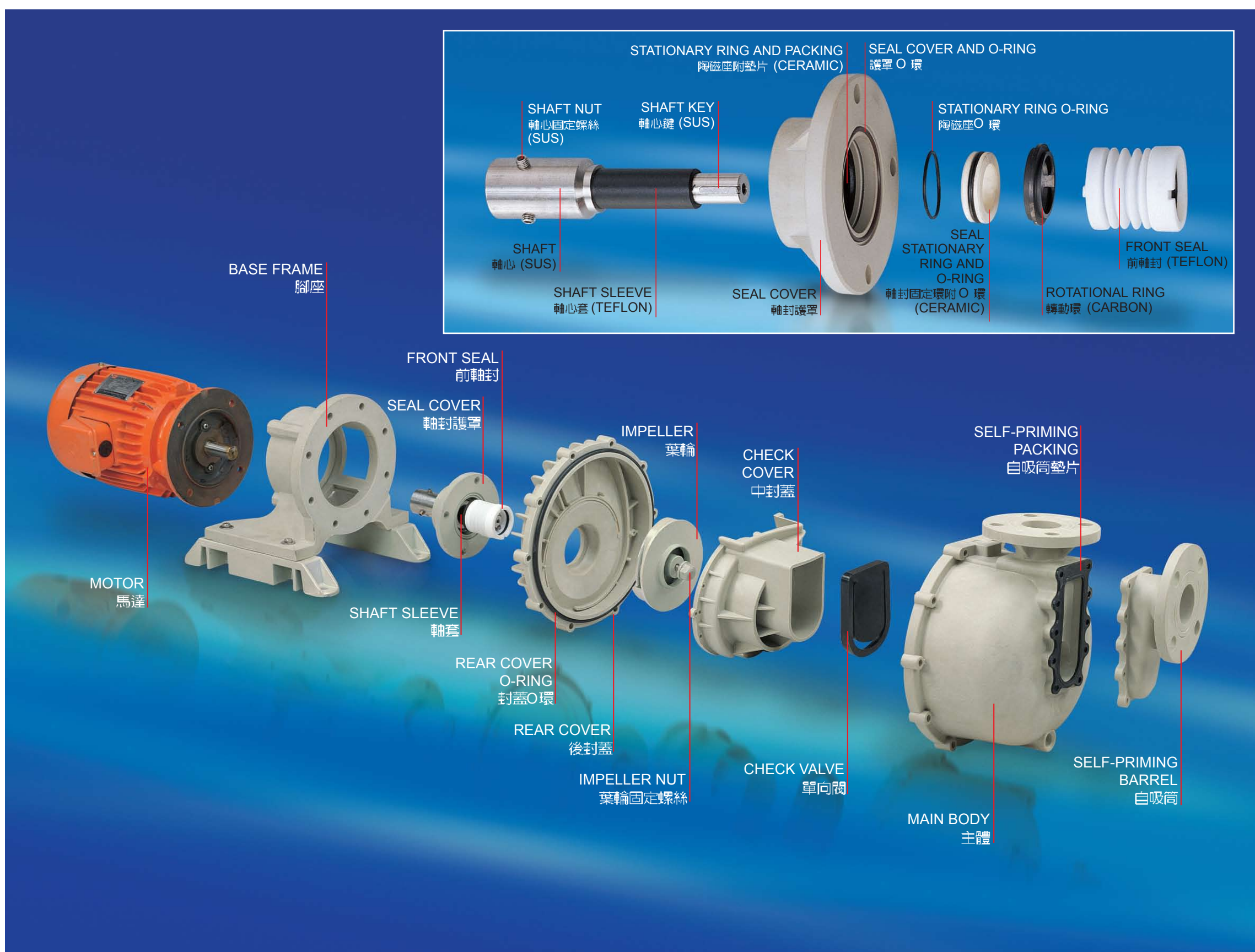
A combination of theorem and extensive experience.

A new level of pump performance.

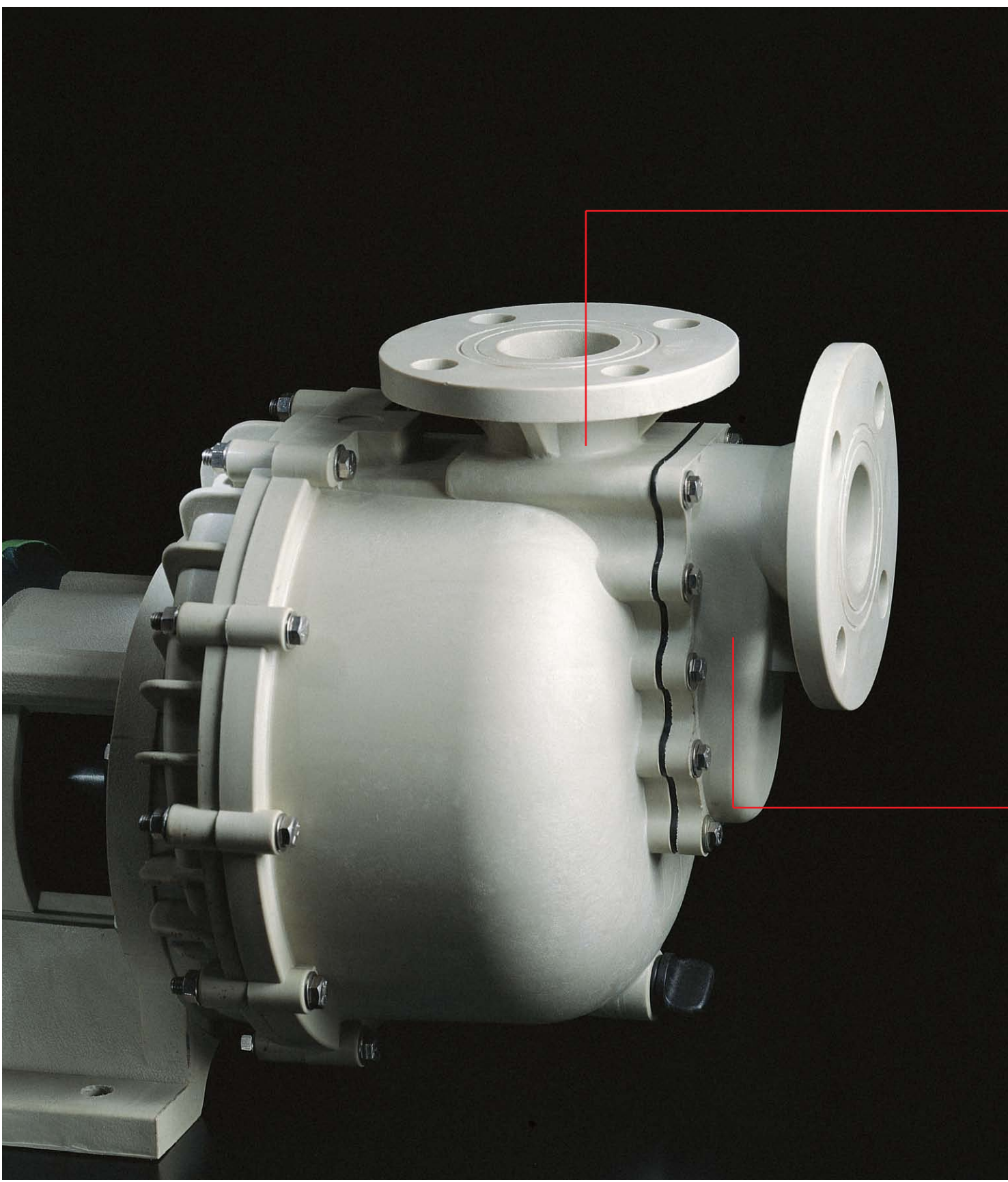
ZI YI ELECTRICAL ENGINEERING CO., LTD. is an expert in design, and manufacturing of a wide variety of acid/alkaline, and chemical resistant pump. Based on the years of total dedication to the research of pump performance and chemical composition, in incorporating with the extensive experience and theoretical basis, enabled ZI YI pumps to be a new standard. The outstanding engineering capability from ZI Yi will offer the innovative and dependable pumps to meet your requirements.....

融合理論與實務經驗。展現泵浦性能新境界。

專業設計，開發製造各式耐酸鹼化學性泵浦之ZI YI電機股份有限公司，秉持多年來矢志鑽研泵浦特殊及化學成份，其卓越傑出的經驗與理論基礎，ZI YI公司為高級過濾機及泵浦之新典範，ZI YI公司深厚的技術背景，將為您提供創新可靠的過濾機及泵浦。



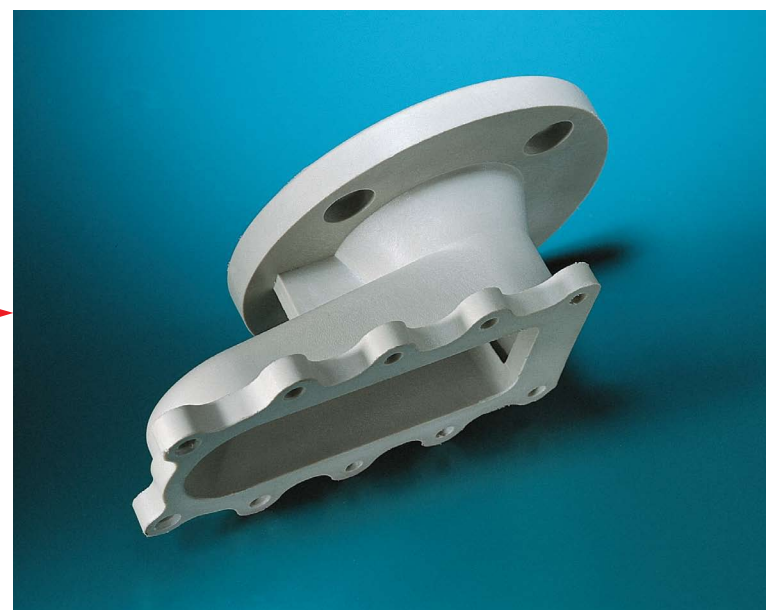
Superior quality of pump body.
One piece injected without welding.
超質泵浦主體結構，前所未有品質，一體射出成型無須焊接。



Unmatched Quality.
Unmatched Performance.
卓越品質，一般廠牌難以抗衡。



The pump body is manufactured from PVDF and CFRPP, FRPP. The body and upper self-priming barrel are one piece injected without welding, for leakfree performance.
泵浦主體採用 PVDF、CFRPP、FRPP 材質，主體與上方自吸筒一體射出成型，決無任何焊接點，所以決不洩漏。



The front self priming barrel is manufactured from PVDF and CFRPP, FRPP. The flange and front self priming barrel are one piece injected without welding that greatly upgrades durability, and ensures leakfree performance.
前自吸筒採用 PVDF、CFRPP、FRPP 材質，自吸筒與法蘭一體射出成型，決無焊接，更強化本產品耐用性，所以決不洩漏。



The conventional method is to weld the upper self priming barrel on the pump body, which may cause leakage at the welded position.
傳統式泵浦，主體與自吸筒採用焊接方式，長時間使用導致容易造成洩漏情形。



The conventional method is to weld the flange on the front self-priming barrel, that may cause leakage and poor durability, and seal damage due to dry running.
一般式自吸筒與法蘭力是傳統，耐用性不佳，容易造成洩漏現象，以至產生入口空轉損傷軸封。



POOR SELF PRIMING BARREL
The self priming barrel can't be sealed with pump body. An additional screw shall be fitted in the inlet port for sealing purpose.
• In case of over-tightening of screw may cause glue on screw peeling off.
• If screw fall into the pump, it needs to disassemble the pump and reassemble.

密封不良之自吸筒
• 自吸筒無法與泵浦主體完全密封，必須在入口處內，加裝一螺絲，以達完全密封之效果。
• 當螺絲旋轉過緊，可能造成螺絲上之膠質剝落。
• 螺絲旋轉過松，如螺絲掉入泵浦內，必須花費較多工時的拆卸與重新裝配，則造成損耗。

KB SERIES 同軸自吸式耐酸鹼泵浦
COAXIAL VACUUM ACID/ALKALINE-RESIST PUMP

KCL SERIES 連接自吸式耐酸鹼泵浦
CONNECTING AND SELF-PRIMING CHEMICAL PUMP

KB / KCL	1	2	3	4	5	6	7	8	9	10
KB / KCL-TYPE	1	2	3	4	5	6	7	8	9	10
KB / KCL- MATERIAL	FRPP	FRPP	FRPP	FRPP	FRPP	FRPP	FRPP	FRPP	FRPP	FRPP
KB / KCL- MATERIAL	FRPP	FRPP	FRPP	FRPP	FRPP	FRPP	FRPP	FRPP	FRPP	FRPP
KB / KCL- MATERIAL	FRPP	FRPP	FRPP	FRPP	FRPP	FRPP	FRPP	FRPP	FRPP	FRPP
機型編號	1	2	3	4	5	6	7	8	9	10
KB / KCL- 泵浦材質	FRPP	FRPP	FRPP	FRPP	FRPP	FRPP	FRPP	FRPP	FRPP	FRPP
KB / KCL- 橡膠材質	FRPP	FRPP	FRPP	FRPP	FRPP	FRPP	FRPP	FRPP	FRPP	FRPP
KB / KCL- 橡膠材質	FRPP	FRPP	FRPP	FRPP	FRPP	FRPP	FRPP	FRPP	FRPP	FRPP
B-NON CHECK-VALVE (INLET LOWER THAN LIQUID LEVEL)	1	2	3	4	5	6	7	8	9	10
A-WITH CHECK-VALVE (INLET HIGHER THAN LIQUID LEVEL)	1	2	3	4	5	6	7	8	9	10
B- 無單向閥 (入口比液面低適用)	1	2	3	4	5	6	7	8	9	10
A- 有單向閥 (入口比液面高適用)	1	2	3	4	5	6	7	8	9	10
L- 低揚程	1	2	3	4	5	6	7	8	9	10
H- 高揚程	1	2	3	4	5	6	7	8	9	10
STATIONARY RING	1	2	3	4	5	6	7	8	9	10
C- CERAMIC	1	2	3	4	5	6	7	8	9	10
S- SIC	1	2	3	4	5	6	7	8	9	10
ROTATIONAL RING	1	2	3	4	5	6	7	8	9	10
C- CARBON	1	2	3	4	5	6	7	8	9	10
S- SIC	1	2	3	4	5	6	7	8	9	10
SPRING	1	2	3	4	5	6	7	8	9	10
H- HASTELLOY-C	1	2	3	4	5	6	7	8	9	10
S- SUS316	1	2	3	4	5	6	7	8	9	10

KB SERIES TYPE



KCL SERIES TYPE



PUMP APPLICATION EXAMPLES

泵浦典型應用例

