

F301- New 270mm large size pipe size 3/4"-1" F301 series



**Product Features · Use**

- 4 design innovations to improve usability:  
 New body design: Decreases the vibration when working which stabilises flow distribution./ New indicator design: Easily adjustable and positionable./ Thickened threads for caps: Caps are easy to be locked even under bad concentricity./ Models with and without guide rods are able to share the same adaptors.
- Patented dual-indicator design for easy and clear flow range management.
- Laser engraved degree scales provide better readability and longer life.
- Available in customizable units, temperature, and molecular weight.

**Standard Specs**

- Model: F301PSU, F301H PSU
- Adaptor Size: 3/4", 1"
- Applicable Fluid: Liquid
- Flow direction: From the bottom up
- Engraved degree scales: Laser engraved degree scales
- Fluid Temperature: 50°C (Standard: UPVC adaptor)  
60°C (PP adaptor)
- Working Pressure: 5.0 kg/cm<sup>2</sup>
- Full Scale Accuracy: ±5% F.S.
- Product Material

Body - PSU, PC  
 Float - Stainless 316, Hastelloy C  
 Guide Rod - Stainless 316, Hastelloy C  
 Guide Rod Bottom - PP  
 Adaptor - Welding Type: UPVC  
 Male, Female Thread: UPVC, PP  
 Butt-fusion Adaptor: PP  
 Union Nuts - UPVC, Aluminum  
 O-ring - EPDM, VITON

- Adaptor Material
- Welding Type, Male Thread, Female Thread, Butt-fusion Adaptor

※ BSPT is standard thread type. NPT is available for custom order.

**Scale Range**

Product Code	Scale Range ※ 1 ※ 2 (L/min)
F301 - 20LPM	2.0-20 / S, H
F301 - 30LPM	3.0-30 / S, H
F301 - 50LPM	5.0-50 / S, H
F301 - 80LPM	8.0-80 / S, H
F301 - 100LPM	10-100 / S, H

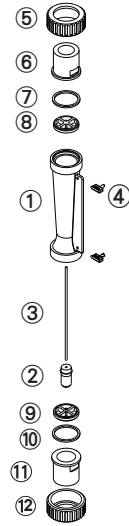
※ 1. Liquid flow meters are calibrated for 20°C water.  
 ※ 2. " / "float material, S- Stainless 316, H- Hastelloy C.

**Maximum working temperature for different adaptor materials**

Adaptor Types	Maximum working temperature materials		
	~ 50°C	~ 60°C	~ 100°C
Welding Type	UPVC	-	-
Male / Female Thread	UPVC	PP	-
Butt-fusion Adaptor	-	PP	-

※ When maximum working temperature is over 50°C, the material for guide rod bottom and union nuts have to be PSU and aluminium.  
 ※ If the maximum working temperature requirement of the adapter is over 60°C, please contact LORRIC directly.

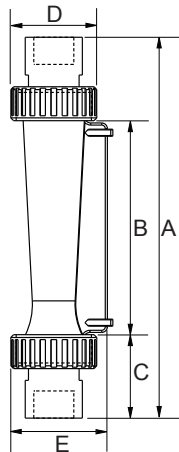
## Parts Material



No.	Series	Material (Main material)*			
		1	2	3	4
1	Body	PSU	PSU	PSU	PSU
2	Float	S316	S316	Hastelloy C	PVC
3	Guide Rod	S316	S316	Ti	Hastelloy C
4	Pointer	PP	PP	PP	PP
5,12	Union Nuts	UPVC	UPVC	UPVC	UPVC
6,11	Adaptor	UPVC	UPVC	UPVC	UPVC
7,10	O-ring	EPDM	VITON	VITON	VITON
8,9	Guide Rod Bottom	PP	PP	PP	PP

\* Material for different parts is optional for each flowmeter.

## Parts Size



Adaptor Spec	A	B	C	D	E
1"Male Thread	270	153	58.5	61	69
1"Female Thread	270	153	58.5	61	69
1"CNS	257	153	52	61	69
1"ASTM	257	153	52	61	69
1"JIS	255	153	51	61	69
3/4"Male Thread	256	153	51.5	61	69
3/4"Female Thread	272	153	59.5	61	69
3/4"CNS	260	153	53.5	61	69
3/4"ASTM	254	153	50.5	61	69
3/4"JIS	260	153	53.5	61	69
3/4"DIN	254	153	53.5	61	69
3/4"DIN Thick pipe wall	254	153	51.5	61	69
3/4"JIS MIN	254	153	49.5	61	69
1/2"ASTM	252	153	49.5	61	69
1/2"JIS	250	153	48.5	61	69
1/2"DIN	250	153	48.5	61	69
PP OD33 ID25.2	254	153	50.5	61	69

Unit: mm

## Specification inquiry (F301)

\* Contact us with below information.

- Fluid -  Water  Other \_\_\_\_\_
- Specific gravity -  Standard-1.0  Other \_\_\_\_\_
- Pressure -  Standard-5.0kg/cm<sup>2</sup>  Other \_\_\_ kg/cm<sup>2</sup>
- Temperature -  Normal temperature  Other \_\_\_ °C
- Scale Range - \_\_\_\_\_ L/min ~ \_\_\_\_\_ L/min
- Adaptor Size -  1" JIS  Other \_\_\_\_\_
- Adaptor Material -  Welding Type  Male Thread  
 Female Thread  Butt-fusion Adaptor  
 Other \_\_\_\_\_

- Material
  - 1 Body PC  2 Body PSU
  - 3 Body PSU Hastelloy C FloaT, Ti Guide Rod
  - 4 Body PSU Hastelloy C Float & Guide Rod  
Adaptor PSU (for high working temperature)
  - 5 Other  
Specs besides above listed information \_\_\_\_\_