

# PRODUCT CATALOGUE

Cleaning Machinery and Equipment Supplies

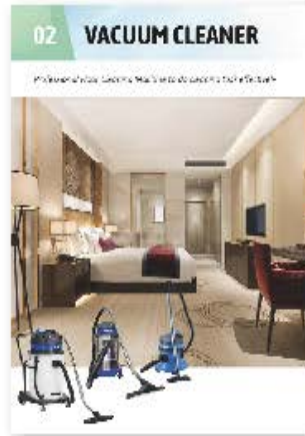
2025/2026



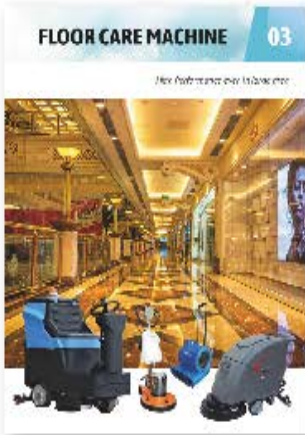
# CONTENTS



Page **03**  
**DETERGENT**



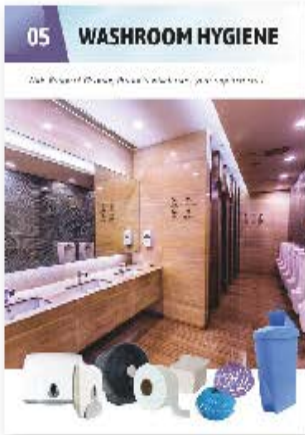
Page **10**  
**VACUUM  
CLEANER**



Page **13**  
**FLOOR CARE  
MACHINE**



Page **24**  
**DISHWASHER**



Page **28**  
**WASHROOM  
HYGIENE**



Page **33**  
**TOOLS AND  
EQUIPMENT**



Page **44**  
**BUILDING  
SERVICES**

# DETERGENT

01

*Variety of Detergents with Effective Cleaning Performance*



## DETERGENT

### ▼ STRIPPER

#### HB 702 STRIP OFF



CODE	PACKING
701-702-00	4 x 5Lit/Ctn
701-702-10	2 x 10Lit/Ctn

##### **Synthetic Stripper**

- For Stripping (with floor scrubber) Dilution ratio: -  
1 (chemical) : 10 (water) (need to wait)
- Use on all floor surfaces
  - Removing water emulsion polish
  - Require rinsing prior application of floor polish
  - pH(± 0.5) : 12.5

### ▼ HARD SURFACE CLEANER

#### HB 711 KLEEN ALL



CODE	PACKING
701-711-00	4 x 5Lit/Ctn
701-711-10	2 x 10Lit/Ctn
701-711	20Lit/Drum

##### **Highly Concentrated Neutral Cleaner**

- For Mopping Dilution Ratio: 1 (chemical) : 100 (water)  
For Scrubbing Dilution Ratio: 1 (chemical) : 50 (water)
- Safe to use on all surfaces
  - Highly efficient for general cleaning maintenance
  - Environmental friendly
  - pH(± 0.5) : 7.0

#### HB 799M M CLEAN



CODE	PACKING
701-799M-00	4 x 5Lit/Ctn
701-799M-10	2 x 10Lit/Ctn
701-799M	20Lit/Drum

##### **Rinse Free Multi Purpose Alkaline Cleaner**

- For Mopping Dilution Ratio: -  
1~2cap (chemical) : ½ Mop Bucket (water)
- Fresh and pleasant odour detergent.
  - Cuts through stubborn dirt without much effort.

#### HB 799GP M CLEAN GP



CODE	PACKING
701-799GP-00	4 x 5Lit/Ctn
701-799GP-10	2 x 10Lit/Ctn
701-799GP	20Lit/Drum

##### **Non Caustic Multi Purpose Cleaner**

- For Mopping Dilution Ratio: -  
1~2cap (chemical) : ½ Mop Bucket (water)
- Versatile cleaner without fragrant.
  - Suitable for Auto Scrubber.

### ▼ DEGREASER

#### HB 714 INDUSTRIAL DEGREASER



CODE	PACKING
701-714-00	4 x 5Lit/Ctn
701-714-10	2 x 10Lit/Ctn
701-714	20Lit/Drum

##### **Water Based Biodegradable Degreaser**

- For Normal Duty Dilution Ratio:-  
1 (chemical) : 30 (water)
- Safe to use in Food & Beverage (F&B) area
  - Contains rust inhibitor
  - Highly recommended for removing vegetable and mineral oil
  - For usage in food processing plant, municipalities, printing and marine industry
  - pH(± 0.5) : 12.5

#### HB DISCOTT HEAVY DUTY



CODE	PACKING
701-7011-00	4 x 5Lit/Ctn
701-7011-10	2 x 10Lit/Ctn
701-7011	20Lit/Drum

##### **Highly Concentrated, Acid-based Cleaner**

- DISCOTT is a highly concentrated, acid-based, end of installation cleaner to remove residues of cement, cement-based grout, dirt and inorganic residues such as salts, limescale and efflorescence.

- Dilute to 30-40% in water:  
- approx. 1 (chemical) : 2 (water)

## ▼ SPECIALITY

### HB 715 GLASS KLEEN



CODE	PACKING
701-715-00	4 x 5Lit/Ctn
701-715-10	2 x 10Lit/Ctn
701-715	20Lit/Drum

#### **Double Solvent Glass Cleaner**

For Spray Dilution Ratio: 1(chemical) : 10 (water)  
 - Fast cleaning for windows, mirrors, glass desktops and car windows  
 - Dilution at 1:10(spray cleaning)  
 - pH(± 0.5) : 9.5

### HB 730 CAR WASH



CODE	PACKING
701-730-10	2 x 10Lit/Ctn
701-730	20 Lit/Drum

#### **High Foaming Vehicle Detergent**

For General Dilution Ratio: 1(chemical) : 100 (water)  
 - Remove grease and dust from vehicles  
 - Maintain the luster and gloss of the paintwork  
 - Dilution at 1:100  
 - pH(± 0.5) : 9.5

## ▼ WASHROOM CLEANER

### HB 717 FLUSH KLEEN



CODE	PACKING
701-717-00	4 x 5Lit/Ctn
701-717-10	2 x 10Lit/Ctn
701-717	20Lit/Drum

#### **Concentrated Acid Toilet Bowl Cleaner**

For Spray Dilution Ratio: 1(chemical) : 6 (water)  
 - Periodic deep cleaning of toilet bowl and urinal  
 - Remove scale and disinfect  
 - pH(± 0.5) : 0.5

### HB 720 ODORBAN



CODE	PACKING
701-720-5	5kg/Tin (+/-115pcs)
501-520	20 kg/Drum

#### **Crystallized Parablock**

Disinfect, reduce odour or mask odours of restroom  
 - Place 1 block on the drain of the urinal  
 - Recommended to use at toilets, urinal bowl, schools, theatres and institutions.

## ▼ CARPET CARE

### HB 723 LO FOAM



CODE	PACKING
701-723-00	4 x 5Lit/Ctn
701-723	20Lit/Drum

#### **Low Foaming Carpet Shampoo**

For Extraction System Dilution Ratio: -  
 1 (chemical) : 6 (Water)  
 - Coverage 2,500 sq.ft. per 10L diluted solution  
 - Also suitable for bonnet cleaning of heavily soiled traffic area  
 - Low foaming detergent with anti-redeposition properties which allows easy vacuum extraction  
 - pH(± 0.5) : 11.5

### HB 723E CARPET ODOUR ELIMINATOR



CODE	PACKING
701-723E-00	4 x 5Lit/Ctn
701-723E	20Lit/Drum

#### **Water Extraction Carpet Cleaner**

For Spraying Dilution Ratio: -  
 1 (chemical) : 10 (Water)  
 - Reduce the carpet odour effectively  
 - pH(± 0.5) : 7.0

## ▼ STONE CARE

### HB MARBLE POLISHING POWDER



CODE	PACKING
701-7003	1kg/Drum
	5kg/Drum
	20kg/Drum

#### **Revitalised dull and lifeness floor to a sparkling finish**

For 10sq. ft Scrubbing Dilution Ratio: -  
 1 scoop (chemical) : 1 scoop (Water)  
 - Natural-effect polishing powder for marble surfaces and lime-based materials such as limestone, travertine and marble-based agglomerates.

# DETERGENT

## ▼ AIR FRESHENER



- 1 HB 719A AIR FRESH (APPLE)
- 2 HB 719LE AIR FRESH (LEMON)
- 3 HB 719LV AIR FRESH (LAVENDER)
- 4 HB 719R AIR FRESH (STRAWBERRY)

### **Perfumed Disinfectant, Cleaner & Deodorizer**

For Mopping Dilution Ratio: 1 (chemical) : 15 (water)  
 For Spraying Dilution Ratio: 1 (chemical) : 3 (water)  
 - Clean, sanitize and deodorize  
 - Leaves the area smelling fresh and clean  
 - pH(± 0.5) : 7.0

CODE	PACKING
701-719A-00	4 x 5Lit/Ctn
701-719A-10	2 x 10Lit/Ctn
701-719A	20Lit/Drum
701-719LE-00	4 x 5Lit/Ctn
701-719LE-10	2 x 10Lit/Ctn
701-719LE	20Lit/Drum
701-719LV-00	4 x 5Lit/Ctn
701-719LV-10	2 x 10Lit/Ctn
701-719LV	20Lit/Drum
701-719R-00	4 x 5Lit/Ctn
701-719R-10	2 x 10Lit/Ctn
701-719R	20Lit/Drum

## ▼ FRESH FLOOR CLEANER



- 1 HB 719LF LAVENDER FLOOR CLEANER
- 2 HB 719RF STRAWBERRY FLOOR CLEANER
- 3 HB 719IF LIME FLOOR CLEANER

### **Fresh Multi Cleaner without Rinsing**

For Mopping Dilution Ratio: 1 (chemical) : 250 (water)  
 For Spraying Dilution Ratio: 1 (chemical) : 3 (water)  
 - Sparking clean rinse-free cleaner for all water safe surfaces such as floor  
 - pH(± 0.5) : 10.0

CODE	PACKING
701-719LF-00	4 x 5Lit/Ctn
701-719LF-10	2 x 10Lit/Ctn
701-719LF	20Lit/Drum
701-719RF-00	4 x 5Lit/Ctn
701-719RF-10	2 x 10Lit/Ctn
701-719RF	20Lit/Drum
701-719IF-00	4 x 5Lit/Ctn
701-719IF-10	2 x 10Lit/Ctn
701-719IF	20Lit/Drum

## ▼ HAND CARE



### **Pearlised Perfumed Liquid Hand Soap**

- Enriched with lanolin skin conditioner
- Works safely to clean and protect hands
- pH(± 0.5) : 7.0

1	HB 725T HAND SOAP (DETTOL)
2	HB 725G HAND SOAP (GREEN)
3	HB 725P HAND SOAP (PINK)
4	HB 725W HAND SOAP (WHITE)
5	HB 725Y HAND SOAP (YELLOW)

CODE	PACKING
701-725T-00	4 x 5Lit/Ctn
701-725T-10	2 x 10Lit/Ctn
701-725T	20Lit/Drum
701-725G-00	4 x 5Lit/Ctn
701-725G-10	2 x 10Lit/Ctn
701-725G	20Lit/Drum
701-725P-00	4 x 5Lit/Ctn
701-725P-10	2 x 10Lit/Ctn
701-725P	20Lit/Drum
701-725W-00	4 x 5Lit/Ctn
701-725W-10	2 x 10Lit/Ctn
701-725W	20Lit/Drum
701-725Y-00	4 x 5Lit/Ctn
701-725Y-10	2 x 10Lit/Ctn
701-725Y	20Lit/Drum



1	HB 725TF DETTOL FOAM
2	HB 725GF FOAM SOAP (APPLE)

### **Conditioner Hand Soap with a Pleasant Fragrance**

- Environmental friendly compared to liquid soap
- Reduces soap and water consumption
- Provide instant lather which promotes through washing
- Gentle on hands and easy to rinse off
- Ideal choice for hospitality, healthcare, F&B and education centers
- pH(± 0.5) : 6.5

CODE	PACKING
701-725TF-00	4 x 5Lit/Ctn
701-725GF-00	4 x 5Lit/Ctn



1	HB 785S HAND SANITIZER
2	HB 785J HAND SANITIZER GEL

### **Kill Viruses and bacteria up to 99.9%**

- Disinfect hands without soap and water
- Ideal to use in hospitals, schools, daycare centers, shopping complex and all public areas
- Protects from growth of unwanted germs
- pH(± 0.5) : 6.5

CODE	PACKING
701-785S-00	500ml/Bottle
701-785S-5	5Lit/Drum
701-785J-5	5Lit/Drum
701-785J-10	10Lit/Drum

# DETERGENT

## ▼ HAIR AND BODY SHAMPOO



### Perfumed Hair & Body Cleaner

- Cosmetic grade shampoo safe on hair and body
- Enriched with emollients and conditioner
- pH(± 0.5) : 7.0

1 HB 726M HAIR & BODY SHAMPOO (GOAT'S MILK)

2 HB 726P HAIR SHAMPOO (PINK)

3 HB 726W BODY SHAMPOO (WHITE)

CODE	PACKING
701-726M-00	4 x 5Lit/Ctn
701-726M-10	2 x 10Lit/Ctn
701-726P-00	4 x 5Lit/Ctn
701-726P-10	2 x 10Lit/Ctn
701-726W-00	4 x 5Lit/Ctn
701-726W-10	2 x 10Lit/Ctn

## ▼ DISINFECTANT

### HB 727 ORUO PINE



CODE	PACKING
701-727-00	4 x 5Lit/Ctn
701-727-10	2 x 10Lit/Ctn
701-727	20Lit/Drum

#### General Purpose pine disinfectant

- For Disinfectant Dilution: 1 (chemical) : 20 (water)  
 For Mopping Dilution: 1 (chemical) : 200 (water)
- Clean, disinfect and deodorize in one application
  - Suitable to use in washroom, showers, drains and dustbins
  - pH(± 0.5) : 12.5

### HB 756/756R SANITISER



CODE	PACKING
701-756-00	4 x 5Lit/Ctn
701-756-10 / 701-756R-10	2 x 10Lit/Ctn
701-756 / 701-756R	20Lit/Drum

#### One Step Sanitizer, Deodorizer and Cleaner

- For Mopping Dilution: 1 (chemical) : 60 (water)  
 For Sanitizing Dilution: 1 (chemical) : 20 (water)
- Combination of surfactants and quat disinfectant
  - For sanitation of hard surface such as floors, walls, fixtures and fittings
  - Suitable to use in washroom, showers, countertops, Dining tables, cabinets, and hospital wards
  - pH(± 0.5) : 10.5

## ▼ LAUNDRY CARE

### HB 743 LAUNDRY DETERGENT



CODE	PACKING
701-743-00	4 x 5Lit/Ctn
701-743	20 Lit/Drum

#### All Purpose Laundry Detergent

- For Washing: Use 50ml to 7kg Clothing
- Suitable for large quantity clothing cleaning
  - pH(± 0.5) : 10.0

### HB 744 FABRIC SOFTENER



CODE	PACKING
701-744-00	4 x 5Lit/Ctn
701-744	20 Lit/Drum

#### Fabric Softener

- When Rinsing: Use 50ml to 7kg Clothing
- Give softness and freshness to all types of fabrics
  - pH(± 0.5) : 2.8

## ▼ KITCHEN CLEANER

### HB 748G DISHWASH (GREEN)

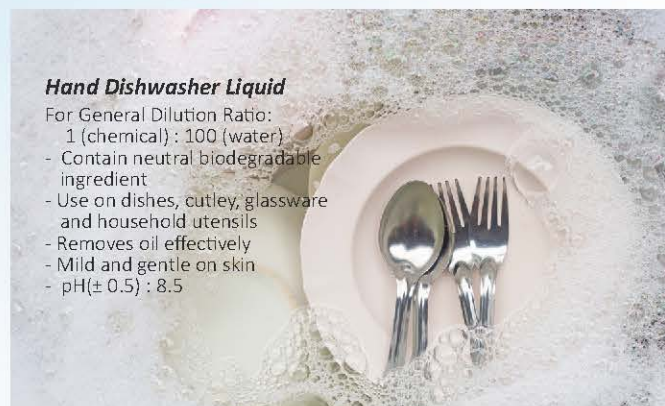


**CODE**  
701-748G-00  
701-748G

**PACKING**  
4 x 5Lit/Ctn  
20Lit/Drum

#### *Hand Dishwasher Liquid*

- For General Dilution Ratio:  
1 (chemical) : 100 (water)
- Contain neutral biodegradable ingredient
  - Use on dishes, cutlery, glassware and household utensils
  - Removes oil effectively
  - Mild and gentle on skin
  - pH(± 0.5) : 8.5



### HB 775 OVEN CLEAN

**CODE**  
701-775-10  
701-775

**PACKING**  
2 x 10Lit/Ctn  
20Lit/Drum

#### *High Performance Alkaline Oven Cleaner*

- For Fryer Dilution Ratio: 1 (Chemical) : 10 (Water)
- For removing carbonized fats, oils & grease
  - Ideal for cleaning grill drip pan, porcelain and glass
  - Safe to use on iron.
  - Contain corrosion inhibitor to protect metalware
  - Apply neat to warm oven

## ▼ KITCHEN DISPENSING SYSTEM

### HB 757 MAC DETERGENT

**CODE**  
701-757-10  
701-757-00

**PACKING**  
2 x 10Lit/Ctn  
20Lit/Drum

- Biodegradable Concentrated Detergent**  
For Spraying Dilution: 1 (chemical) : 333 (water)
- Suitable to use in Dishwasher Machine
  - Will not cause white dirt on dishes
  - pH(± 0.5) : 12.0

### HB 758 RINSE AID

**CODE**  
701-757-10  
701-757-00

**PACKING**  
2 x 10Lit/Ctn  
20Lit/Drum

- Dishwasher Rinsing Detergent**  
For Spraying Dilution: 1 (chemical) : 1667 (water)
- Suitable to use in Dishwasher Machine
  - Will not dull surface, leaving a clear and sterile surface without spotting or streaking
  - Reduce drying time
  - pH(± 0.5) : 4.0



02

# VACUUM CLEANER

*Professional Floor Cleaning Machine to do cleaning task effectively*



## ▼ WET AND DRY VACUUM CLEANER

### HyBert 15

**15 Litres Wet and Dry Vacuum Cleaner**  
 CODE 701-20015

#### Technical Specification

Motor	1000W
Tank Capacity	15 Litres
Voltage	220V - 240V
Air Flow Rate	48L/s
Cable Length	5m
Dimension	L39 x W39 x H55.5cm

- Has low-noise motor and powerful suction
- Machine is Durable, Waterproof and Anti-static
- Nice appearance, with Stable base and large capacity tank

OPT Small Size Dust Bag



### HyBert 30

**30 Litres Wet and Dry Vacuum Cleaner**  
 CODE 701-20030

#### Technical Specification

Motor	1300W
Tank Capacity	30 Litres
Voltage	220V - 240V
Air Flow Rate	53L/s
Cable Length	5m
Dimension	L43 x W43 x H78cm

- Stainless Steel Vacuum body with nice appearance
- Stable base and large capacity tank
- Suitable for long working time
- Powerful suction with low noise motor

OPT Medium Size Dust Bag



### HyBert 70 / 70P

**70 Litres Wet and Dry Vacuum Cleaner**  
 CODE 701-20070 (Stainless Steel Tank)  
 701-20070-P (Plastic Tank)

#### Technical Specification

Motor	2000W
Tank Capacity	70 Litres
Voltage	220V - 240V
Air Flow Rate	106L/s
Cable Length	5m
Dimension	L60 x W54 x H101cm

- Silent motor with powerful suction, suitable for long working time.
- Machine is Durable, Waterproof and Anti-static.
- Nice appearance, with Stable base and large capacity tank.

OPT Large Size Dust Bag



# VACUUM CLEANER

## ▼ WET AND DRY VACUUM CLEANER

### HyBert 80

**80 Litres Wet and Dry Vacuum Cleaner**  
CODE 701-20080

#### Technical Specification

Motor	3000W
Tank Capacity	80 Litres
Voltage	220V - 240V
Air Flow Rate	120L/s
Cable Length	5m
Dimension	L60 x W53 x H112cm

- Stainless Steel Vacuum body with nice appearance
- Stable base and large capacity tank
- Suitable for long working time
- Powerful suction with low noise motor



### HyBert 90

**90 Litres Wet and Dry Vacuum Cleaner**  
CODE 701-20090

#### Technical Specification

Motor	2000W
Tank Capacity	90 Litres
Voltage	220V - 240V
Air Flow Rate	106L/s
Cable Length	7.2m
Dimension	L62 x W52 x H102cm

- Large capacity semi-transparent plastic tank which is acid-proof, anti-alkali and collision resistant
- Nice appearance, high flexibility and stable base



### HyBert 220L

**Turbine Multifunctional Wet/Dry Vacuum Cleaner**  
CODE 701-20220

#### Technical Specification

Power	1800W
Tank Capacity	220 Litres
Voltage	220V / 50Hz
Barrel Diameter	570mm
Vacuum Suction	27 kPa
Net Weight	72.8kg
Gross Weight	91.8kg
Function	Wet and Dry
Packing Specification	110 x 86 x 145cm

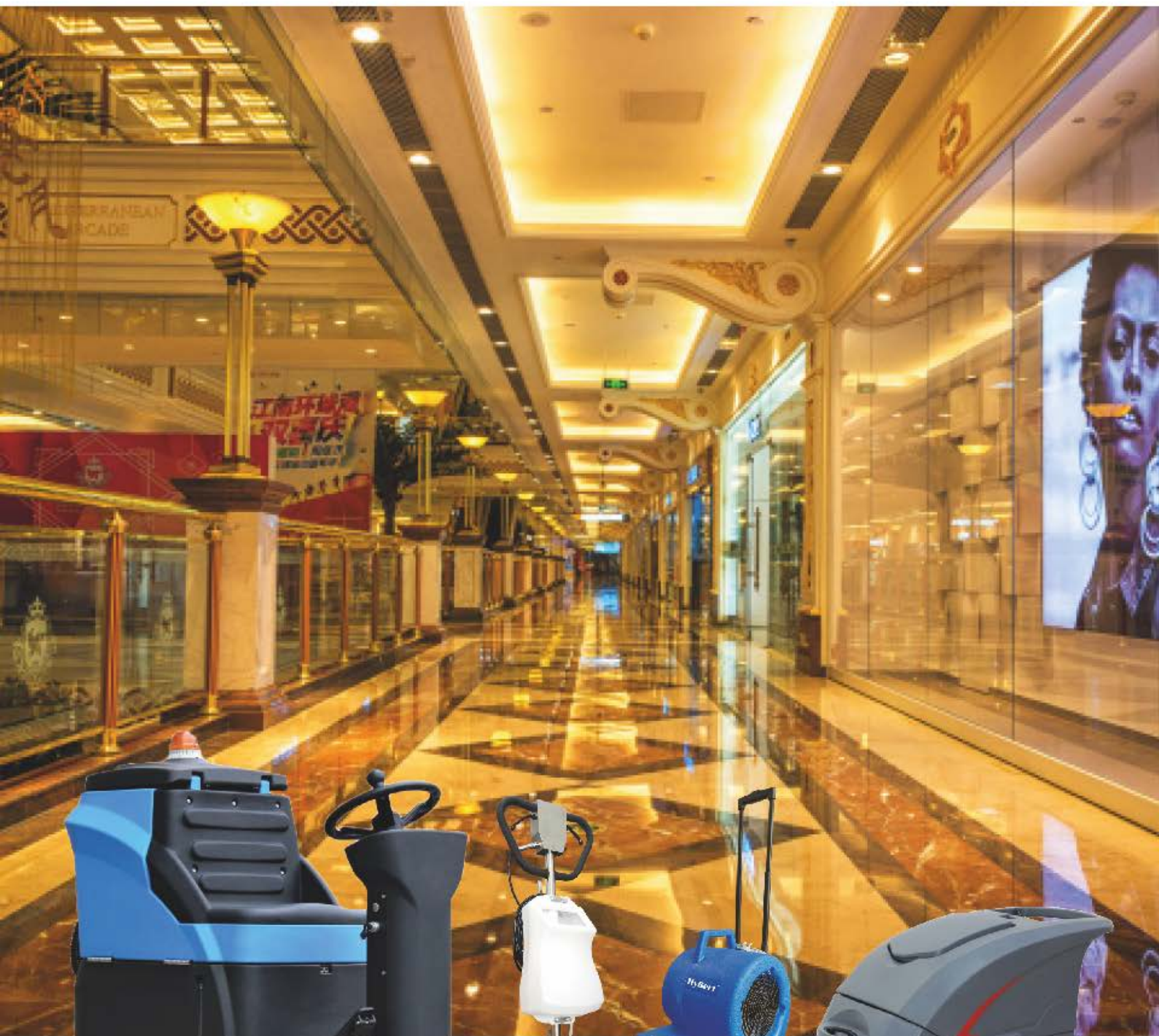
- Silent motor with powerful suction, suitable for long working time
- Machine is Durable, Waterproof and Anti-static
- Nice appearance, with Stable base and large capacity tank



# FLOOR CARE MACHINE

03

*High Performance even in large area*



# FLOOR CARE MACHINE

## ▼ FLOOR SCRUBBER MACHINE

- Multifunctional burnisher is designed with handle controlling. It is outstanding for its four chief functions-carpet washing, floor washing, wax removing and low-speed burnishing, which can meet different customers' requirements.
- The handle is designed with new aluminium alloy construction that makes it strong and durable.
- Full stainless steel handle, sturdy and durable. It can be adjusted freely.

OPT 18" Floor Brush



**HyBert P154B**

**Industrial Single Disc Floor Scrubber**  
CODE 701-2103-00

### Technical Specification

Motor Power	1200W
Voltage	220V - 240V
Rotation	154rpm
Weight	48kg
Diameter of Base Plate	17"
Cable Length	12m

OPT 13L Tank



OPT 17" Floor Brush



**P175**

**Industrial Single Disc Floor Scrubber**  
CODE 701-2104-00

### Technical Specification

Motor Power	1200W
Voltage	220V - 240V
Rotation	175rpm
Weight	51kg
Diameter of Base Plate	17"
Cable Length	12m

OPT Pad Holder and Brush Set



**HyBert 2.5HP**

**Stone Care Machine**  
CODE 701-2109-00

### Technical Specification

Motor Power	2.5HP
Voltage	220V / 50Hz
Rotation	175rpm
Weight	48kg
Diameter of Base Plate	17"
Cable Length	42m



## ▼ BATTERY OPERATED FLOOR SCRUBBER MACHINE

### HyBert P18

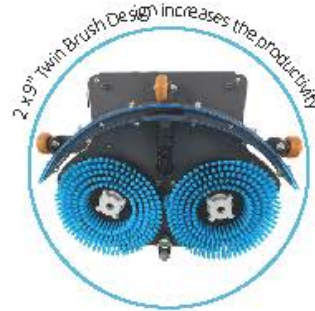
Walk-Behind Twin-Brush Battery Operated Auto Scrubber

CODE 701-2116-00

#### Technical Specification

Cleaning Efficiency	1200m <sup>2</sup> /H
Water Tank Capacity	6L
Drain Tank Capacity	9L
Brush Power	160W
Suction Power	120W
Noise Level	65dB
Battery Capacity	16Ah
Working Time	2 Hours
Full Charge Time	5 Hours
NET Weight	24kg
Dimension	51.8 x 41 x 123.5cm

- 16A large capacity lithium iron phosphate battery is safe and durable, which can continuous use for more than 120 minutes.
- Backflow prevention device technology to prevent stains from remaining.



### HyBert P11

180° Rotating Plate Battery Operated Mini Scrubber

CODE 701-2201-00

### HyBert P14

180° Adjustable Handle Battery Operated Walk Behind Scrubber

CODE 701-2202-00

#### Technical Specification

	HyBert P11	HyBert P14
Squeegee Width	340mm	420mm
Productivity	800 <sup>2</sup> /h	1000 <sup>2</sup> /h
Water Tank Capacity	6L	13L
Drain Tank Capacity	9L	15L
Brush Motor	200W	400W
Suction Motor	120W	400W
Battery Capacity	12Ah/16Ah	2*12V/32Ah
Working Time	1.5h/2h	1.5 hours
NET Weight	23kg	60kg
Dimension	58.4 x 40.1 x 104cm	72 x 45 x 103cm

- **HyBert P11** has imported technology of rotary brush plate design, can move forward and backward freely. 360 degree rotating squeegee, adjustable handle, 90 degree wall can be cleaned.
- **HyBert P14** Ergonomic handle design with 180 degrees adjustable and foldable for easy transport and storage.



# FLOOR CARE MACHINE

## ▼ POLISHING MACHINE

- An 1100W electric motor to rotate a 20" brush or pad against a floor to strip wax, scrub dirt, apply finish, polish, or buff a floor surface.
- Combination of orbital and rotary motions which gives the machine its great stability, thus enhancing the performance of a regular single disc machine.
- Users will find it easy to use as they will face little resistance from the machine, as such training time is greatly reduced.

OPT 20" Floor Brush



HyBert P1500

Polishing Machine  
CODE 701-2118-00

### Technical Specification

Power	1100W
Voltage	220 - 240V
Rotation	1500rpm/min
Brush Diameter	20"
Weight	±45kg
Cable Length	12m
Noise Level	54dB

HyBert P1500S

High Speed Burnisher Machine  
CODE 701-2121-00

### Technical Specification

Power	1800W
Voltage/Frequency	220V/50Hz
Rotation	1500rpm/min
Brush Diameter	20"
Weight	±50kg
Cable Length	12m



# HyBert P10

## 10" Stair Scrubbing Machine

**HyBert P10** is designed for grinding and cleaning the surface of stairs and corners that cannot be reached by large machines. It is flexible and simple to operate. It has functions such as floor washing, carpet washing, waxing, and low-speed polishing. It can meet the different work needs of customers at the same time. The brush machine is precisely designed, gear-driven, and dual-capacitor configured. It is safe, reliable, and powerful.



### SPECIFICATION

Power	1.0HP
Voltage	220V
Rotation	150rpm/min
Chassis Diameter	10"
Weight	±35kg
Cable Length	13m

### Accessories Provided



Pad Holder



Aluminium Plate

# FLOOR CARE MACHINE

## ▼ CARPET EXTRACTOR

HyBert 460

**3 in 1 Carpet Extractor**  
CODE 701-2201-00

HyBert 460H

**4 in 1 Cold & Hot Water Carpet Extractor**  
CODE 701-2202-00



### Technical Specification

	HyBert 460	HyBert 460H
Power	1290W	3290W
Brush Speed	1100rpm/min	1100rpm/min
Brush Motor	180W	180W
Brush Width	40cm	40cm
Productivity	400m <sup>2</sup> /h	400m <sup>2</sup> /h
Pump Pressure	30PSI	30PSI
Water Tank Capacity	20L	20L
Drain Tank Capacity	18L	18L
Cable Length	18m	12m
Product Size	100 x 54.5 x 97.5cm	100 x 54.5 x 97.5cm

- Have combination of 3 functions: Spraying Water, Washing and Sucking Water.
- It come with 4m Plastic Sucker which allow to clean sofa, cushion or curtain and dry 80% in short time.
- Optional with 4 in 1 Carpet Extractor which has Hot Water Function that can heat up quickly with 30°C to 55°C.



HyBert 14

**Carpet Extractor**  
CODE 701-2203-00

### Technical Specification

Water Suction Motor	800W
Water Pump	50W
Water Spray Pressure	4.8bar
Rate of Flow	4.5LPM
Clean Water Capacity	14L
Sewage Tank Capacity	8L
Wire Length	8m
Noise Level	60dB

HyBert C60

**Wet and Dry Carpet Cleaner**  
CODE 701-2204-00

### Technical Specification

Power	2110W
Capacity	60L
Water Pump	110W
Vacuum Motor	2000W
Air Flow Rate	106L/s
Vacuum Suction	250mbar
Cable Length	8m
Hose Diameter	40mm
Net Weight	28.9kg
Pressure	116PSI

## ▼ WALK BEHIND AUTO SCRUBBER

### HyBert 55B

Walk Behind Battery Operated Auto Scrubber  
CODE 701-2301-00



OPT



21" Floor Brush



Squeegee Blade

#### Technical Specification

Power	1000W
Cleaning Width	560mm
Squeegee Width	830mm
Productivity	1500-2300m <sup>2</sup> /h
Brush Motor	500W
Brush Speed	150rpm
Vacuum Motor	500W
Vacuum Degree	180mbar
Solution Tank	50L
Drain Tank	55L
Sound Level	68dB
Running Time	4 hours
Product Size	124 x 60 x 96cm

- Intuitive Operational Panel easy to control.
- ECO mode which have lower noise and energy save, suitable for epoxy floor and smooth floor.
- Equiped with Floating Device which well protect motor when Drain Water is full.

### HyBert 55E

Walk Behind Cable Operated Auto Scrubber  
CODE 701-2302-00

#### Technical Specification

Power	1450W
Cleaning Width	510mm
Squeegee Width	755mm
Productivity	1750m <sup>2</sup> /h
Brush Motor	750W
Brush Speed	160rpm
Vacuum Motor	700W
Vacuum Degree	140mbar
Solution Tank	50L
Drain Tank	55L
Cable Length	18m
Product Size	125 x 63 x 107cm
Gross Weight	103kg

OPT



20" Floor Brush



Squeegee Blade



- Intuitive Operational Panel easy to control.
- Large tank capacity which ensure longer working hours.
- Equiped with Floating Device which well protect motor when Drain Water is full.

# FLOOR CARE MACHINE

## ▼ RIDE ON AUTO SCRUBBER

### HyBert R70

Ride on Auto Scrubber (Dual-Brush)

CODE 701-2401-00

#### Technical Specification

Driving Motor	500W
Brush Motor	2*300W
Brush Speed	180rpm
Vacuum Motor	500W
Vacuum Degree	180mbar
Water Tank	70L
Drain Tank	80L
Squeegee Width	820mm
Productivity	3800m <sup>2</sup> /h
Product Size	120 x 82 x 115cm

- Flexible and easy to operate.
- Suitable for large areas cleaning operation such as factories, shopping malls, supermarkets, hotels, schools, hospitals, etc. with broad and hard ground.



### HyBert R110

Ride on Auto Scrubber (Dual-Brush)

CODE 701-2402-00

#### Technical Specification

Driving Motor	650W
Brush Motor	2*300W
Brush Speed	180rpm
Vacuum Motor	500W
Vacuum Degree	180mbar
Water Tank	100L
Drain Tank	110L
Squeegee Width	1020mm
Productivity	4200m <sup>2</sup> /h
Product Size	125.5 x 102 x 127.4cm

- Has high-efficiency performance and its Smart Panel provides powerful protection for motor and battery.
- It has ECO mode which is power-saving and low-noise for longer working operation time.



## ▼ RIDE ON AUTO SCRUBBER

### HyBert R180

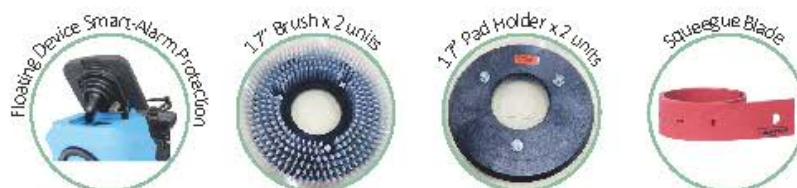
Ride on Auto Scrubber (Dual-Brush)

CODE 701-2403-00

#### Technical Specification

Driving Motor	800W
Brush Motor	2*500W
Brush Speed	180rpm
Vacuum Motor	500W
Vacuum Degree	180mbar
Water Tank	170L
Drain Tank	180L
Squeegee Width	1150mm
Productivity	6000m <sup>2</sup> /h
Product Size	160 x 105 x 145cm

- Dashboard with One-Touch button, automatically start scrubbing, absorbing, intuitive display integrated in the steering wheel.
- Eco with silent mode make it easy to clean over longer periods.



### HyBert R1260

Ride on Sweeper (Dual-Brush)

CODE 701-2404-00

#### Technical Specification

Driving Motor	750W
Main Brush Power	650W
Sweeping Width	1260mm
Cleaning Efficiency	7200sqm/h
Working Time	3-5 Hours
Waste Capacity	80L
Water Tank Capacity	70L
Side Brush Diameter	500mm
Max Driving Speed	8km/h
Machine Dimension	1560 x 1260 x 1320mm

- Has high-efficiency performance and it's Smart Panel provides powerful protection for motor and battery.
- It has ECO mode which is power-saving and low-noise for longer working operation time.



# FLOOR CARE MACHINE

## ▼ FLOOR DRYER

- Ideal for drying and ventilation after the cleaning of carpet and floor surfaces
- The net cover helps to prevent motor from sucking sundries
- High performance with stronger wind power and lower noise
- Rotocast polyethylene tank
- Come with extendable handle

### HyBert FLOOR DRYER

#### Floor Dryer with Wheels and Handle

CODE 701-2101-8

COLOR Blue

#### Technical Specification

Motor Power	850W
Voltage	220V - 240V
Rotation	High/Medium/Low
Weight	15.7kg
Carton Dimension	45 x 43 x 51cm
Cable Length	6m



## ▼ STEAM CLEANER

### HyBert ST02

#### High Pressure Steam Cleaner

CODE 701-2602-00

#### Technical Specification

Voltage	220 - 240V
Power	2200W
Steam Level	4
Steam Quantity	80g/min
Steam Pressure	5bar
Heating up time	Less than 1 min
Water Tank Capacity	1.1L with continuously refilling technology
Product Dimension	32 x 27.5 x 33cm



## ▼ HIGH PRESSURE CLEANER

### HyBert 150E

#### High Pressure Washer (Water Jet)

CODE 701-2501-00

#### Technical Specification

Power	240V
Max Pressure	150bar/2200psi
Max Flow	14.5L/min
Power Required	3.0kW
Max Inflow Temperature	60°C
Dimension	L73 x W41 x H50cm



## ▼ AUTOMATED CLEANING ROBOT

### META-SCRUB 60

Advanced Automated Cleaning Robot

CODE MT-60

#### Technical Specification

Cleaning Width	600mm
Cleaning Efficiency	2,100 m <sup>2</sup> / hour
Brush Rotation Speed	180rpm
Cleaning Pressure	25kg
Water Recycling	Yes
Clean Water Tank	50L (3-Stage Filtration)
Recovery Tank	50L
Scrubbing Operations	Up to 4 hours
Dustmop Operations	Up to 12 hours
Charging Time	4 hours
Max. Operational Speed	1m/s
Noise	70dBA
Weight	200kg
Dimensions (L x W x H)	810 x 784 x 1115mm



Universal key to access all compartments (power switch, tablet and battery panel)

Auto-dumping of water tank with a single button

Replaceable battery for extended operation time

Removable front bumper for easy access and brush replacement



Removable Tablet Device Built-in and remote

Multi-Platform Interface Using mirror technology



Edge Cleaning Less than 10cm from wall surfaces

Zero Degree Turning Radius Seamless and precise cleaning

# 04

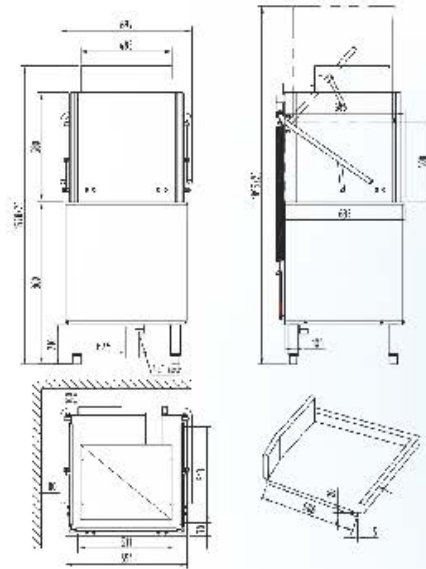
# DISHWASHER

*Clean and Sanitised Dishes with Affordable Operating Cost*



## ▼ SALE OR RENT

### DOOR TYPE DISHWASHER



### SPECIFICATION

Description	Door Type
Dimension	697x686x1578mm
Loading Height	420mm
Cycle Time	60-90-180sec
Capacity	60rack/hr
Prinse Usage	3L/rack
Wash Pump Power	0.75kW
Wash Tank Heater	3kW
Booster Heater	14kW
Rinse Pump Power	0.25kW
Electrical Loading	18kW
Power Supply	380V/50Hz/3ph
Net Weight	125kg

### Characteristic

- Built-in rinse Pump
- HACCP certified machine
- Mechanical circuit control
- Highly efficient performance
- 1.25 HP powerful washing pressure
- All stainless steel wash tank components
- ▶ Consistent rinse pressure
- ▶ Ensure hygiene standard
- ▶ Minimizes down time & repair cost
- ▶ Reduce labor costs
- ▶ Superior washing results
- ▶ Durable and reliable

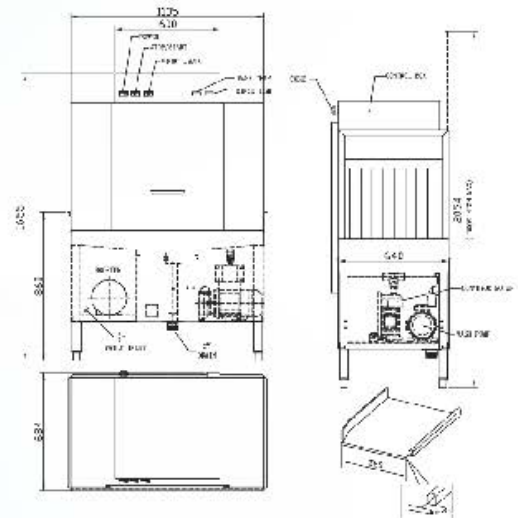
## ▼ SALE OR RENT

### SINGLE TANK CONVEYOR DISHWASHER

#### Features

- New Design of Washing Arm
- Wash Pump with fully stainless steel impeller
- Wide angle Water Jet type nozzle design
- Improved appearance structure design
- Double layer door
- Whole Machine is made of SUS304 stainless steel

- ▶ Easy to dismantle and clean
- ▶ High washing efficiency
- ▶ Perfect washing quality and anti-clog
- ▶ Wider space to avoid cross contamination
- ▶ Prevent heat loss and energy saving
- ▶ More Durable, hygiene and anti-rot



### SPECIFICATION

Rack Type	1 Tank + 1 Rinse Conveyor
Dimension	1105 x 684 x 1655mm
Loading Height	450mm
Capacity	200 racks/hr
Rinse Usage	2L/rack
Wash Pump Power	1.5kW
Wash Tank Heater	12kW
Booster Heater	36kW
Power Supply	380V/50Hz/3ph
Steam Supply	70kg/hr
Electrical Loading	50kW

#### Dryer Optional:-

Length	850mm
Height	2050mm
Motor Power	1.5kW
Heater	9kW

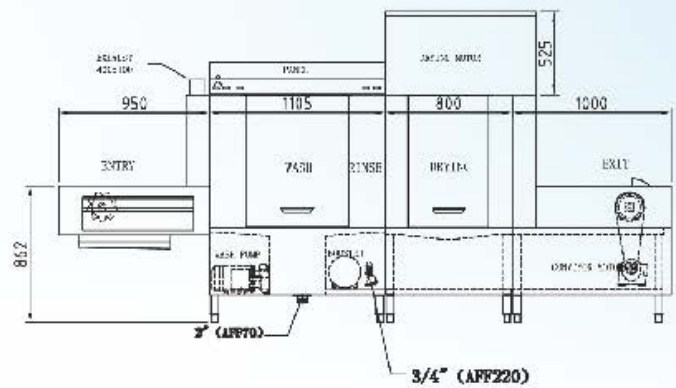
## MINI FLIGHT TYPE DISHWASHER

### SPECIFICATION

Rack Type	1 Tank + 1 Rinse
Dimension	3055 x 830 x 1650mm
Loading Dimension	530 x 420mm
Capacity	1.7~2.0m/min@240Racks/hr
Rinse Usage	5L/min
Wash Pump Power	1.5kW
Wash Tank Heater	15kW
Booster Heater	36kW
Power Supply	400V/50Hz/3ph
Steam Supply	70kg/hr
Electrical Loading	53kW/2kW

#### Dryer Optional:-

Length	800mm
Height	2050mm
Motor Power	1.5kW
Heater	9kW



*Wide Range of Cleaning Products which meet your requirements*



## ▼ PAPER DISPENSER AND REFILL

### HB JRT DISPENSER

**Jumbo Roll Dispenser (Transparent)**

**DIMENSION** D28 x W12.5 x H28.5cm  
**MATERIAL** ABS



REFILL

### HB JRT300

**2-Ply Jumbo Roll Tissue ±300m**

**PACKING** 12 Rolls / Box  
**MATERIAL** 100% Virgin Pure Pulp



REFILL

### HB JRT130

**2-Ply Jumbo Roll Tissue ±130m**

**PACKING** 12 Rolls / Box  
**MATERIAL** 100% Virgin Pure Pulp



### PU DISPENSER

**Table Tissue Dispenser**

**DIMENSION** L11 x W11 x H16cm  
**MATERIAL** ABS



### HBT DISPENSER

**Wall Mount Hand Towel Dispenser**

**DIMENSION** L13.5 x W12 x H27.5cm  
**MATERIAL** ABS



REFILL

### HBT-1

**Single-Ply Emboss Tissue**

**PACKING** 250 Pcs x 36 Packs / Box  
**MATERIAL** Pure Pulp  
**DIMENSION** 20 x 10 cm



REFILL

### HBT-2

**2-Ply Emboss Tissue**

**PACKING** 200 Pcs x 36 Packs / Box  
**MATERIAL** Pure Pulp  
**DIMENSION** 20 x 9.5 cm



### ▼ Do you know?

Pure Pulp Jumbo Roll Tissue can Dissolve Easily and Prevent Blockage during flushing



REFILL

### HB 120T

**2-Ply Tissue Roll**

**PACKING** 200 Sheets x 10 Rolls x 12 Packs / Bundle  
**MATERIAL** Virgin Pulp



### TPD 30 DISPENSER

**Hand Towel Dispenser**

**DIMENSION** L27 x W11.5 x H36.5cm  
**MATERIAL** ABS



### TPD 34 DISPENSER

**Wall Mount Hand Towel Dispenser**

**DIMENSION** L13.5 x W12 x H27.5cm  
**MATERIAL** ABS



REFILL

### HB 200N

**Hand Towel / Multi Fold Towel**

**PACKING** 250 Pcs x 16Packs / Box  
**MATERIAL** Pure Pulp  
**DIMENSION** 22 x 23 cm



### 1/8 FOLD LUNCHEON

**1-Ply Plain Napkin**

**PACKING** 200 Sheets x 3DPacks / Ctn  
**MATERIAL** Virgin Pulp



# WASHROOM HYGIENE

## ▼ SOAP DISPENSER

- Compact leakage-free design
- Easy Press dispenser button
- Highly durable with enhanced TOI Pump System for longer term usage
- Quick and easy to refill
- Clear sight window for quick soap level check
- Suitable for any bathroom, toilet, kitchen & laundry room

### IR 1000P

**Liquid Soap Dispenser with TOI Pump System**

**DIMENSION** L12 x W8.5 x H22cm  
**MATERIAL** ABS (Impact Resistant)  
**CAPACITY** 1000 ml



REFILL



**HB 725T / 725G / 725P / 725W / 725Y** Hand Soap  
**HB 726M / 726P / 726W** Hair and Body Shampoo

\*Refer page 7 & 8

### SL 1000

**Liquid Soap Dispenser**

**DIMENSION** L12.5 x W9.1 x H22.8cm  
**MATERIAL** ABS  
**CAPACITY** 1000 ml



- Unique and elegant design
- Clear sight window for quick soap level check
- Push-to-discharge
- Quick and easy to refill

### IF 1001

**Manual Foam Soap Dispenser**

**DIMENSION** L11.5 x W11 x H23cm  
**MATERIAL** ABS  
**CAPACITY** 1000 ml



REFILL



**HB 725TF** Dettol Foam Soap  
**HB 725GF** Foam Soap

\*Refer page 7

### IAF 1000

**Auto Foam Soap Dispenser**

**DIMENSION** L13.2 x W12.5 x H26cm  
**MATERIAL** ABS  
**CAPACITY** 1000 ml



## ▼ SPRAY BOTTLE

### HB SPRAY BOTTLE

**600 ml Spray Bottle**

**DIMENSION** L12 x W8.5 x H22cm  
**MATERIAL** ABS (Impact Resistant)  
**CAPACITY** 600 ml



## ▼ MOBILE PUMP

### 5L & 20L MOBILE PUMP

**Press-type squeeze pump**

**MATERIAL** PP Plastic  
**OPTIONAL** 5L or 20L



## ▼ WASHROOM DEODORIZATION

### i-Fresh 5

**Super Silent Intelligent Turbo Fan Air Freshener Dispenser**

**DIMENSION** D11.5 x W11.1 x H22.9cm

**MATERIAL** ABS

**COLOR** White



- Get rid of any unpleasant odours or bad smells
- Save cost with its easy to operate Smart Switch which promotes energy saving and extend dispenser's lifespan
- Mounted or free standing with its unique holder.
- To keep your environment freshly fragranced all day for a premium scent experience

### Auto 202

**Auto Air Freshener Spray Type Dispenser**

**DIMENSION** D11.5 x W11.1 x H22.9cm

**MATERIAL** ABS

**COLOR** White



- Programmable Battery Operated Dispenser
- Adjustable time setting to spray 5, 15 or 25 mins
- Stand or wall mounted
- Light indicator to remind changing of battery
- Ideal for washroom, lobby, reception area, office, halls, conference room or public area

### URINEFREE

**Scented Urinal Screen**

**FRAGRANCE** Rose

**PACKING** ±70gm

**COLOR** Purple



### AZ 360

**Scented Urinal Screen**

**FRAGRANCE** Lavender/Lemon

**PACKING** Ø 15cm

**COLOR** Purple/Yellow



REFILL

### NF 60

**Natural Fresh Air Freshener Refill**

**PACKING** ±90gm/Can @ 6 Cans/Box  
@ 72 Cans/Ctn

**FRAGRANCE**



- Provides most effective odour control system
- Made from 100% natural fiber wick
- NON-CFC content - environmental friendly
- Long lasting fragrance refill up to 60 days supply
- Can use without air freshener dispenser (use dispenser for wider fragrance coverage area)

REFILL

### AR300

**Aerosol Can Air Freshener Refill**

**PACKING** ±265gm/Can  
@ 24 Cans/Ctn

**FRAGRANCE** Lemon, Lavender, Sea Breeze,  
Sparkling Lemon, Vanilla Bouquet,  
Lemongrass



- Provides most effective odour control system
- Made from 100% natural fiber wick
- NON-CFC content - environmental friendly
- Long lasting fragrance refill up to 60 days supply
- Can use without air freshener dispenser (use dispenser for wider fragrance coverage area)

### i-FRESH

**Scented Urinal Screen**

**FRAGRANCE** Rose

**PACKING** ±70gm

**COLOR** Ocean Blue



# WASHROOM HYGIENE

## ▼ WASHROOM ACCESSORIES

### BABY NURSING CHAIR

#### Washroom baby chair

<b>DIMENSION</b>	L34 x W33 x H51cm (Open) L34 x W14 x H51cm (Closed) L25 x W20 x H4cm (Chair)
<b>COLOR</b>	Grey
<b>MAX LOAD CAPACITY</b>	25kg
<b>MATERIAL</b>	HDPE
<b>SUITABLE FOR CHILDREN</b>	Age 1-3 years old
<b>PRODUCT WEIGHT</b>	2.5kg



- Parents can attend to their toilet or fitting room matters while securing their children on the nursing chair
- Comfortable large seat with nylon strap to keep baby in place
- Perfect for small or restricted space such as cubical toilet, nursing room, fitting room
- Easy to clean
- Rust free
- Ergonomic design and easy to open/close
- Wall mounted
- Durable HDPE construction
- Built-in adjustable safety buckle strap for baby safety
- Wider seating for baby's comfort (hold up to 25kg)
- No sharp edges to prevent any injury to baby
- Foldable seat to save space
- Non-slip surfaces design to prevent slippery
- Designed to support baby of less than 25kg (1 – 3 years old)

### BABY NURSING CHAIR

#### Washroom baby chair

<b>DIMENSION</b>	L86 x W58 x H50cm (Open) L86 x W10 x H58cm (Closed) D6 x L14.5 (Hook Holder) L8.5 x W6 x H16 (2 units Tissue Compartment)
<b>MAX LOAD CAPACITY</b>	50kg
<b>MATERIAL</b>	HDPE
<b>PRODUCT WEIGHT</b>	10kg



- Durable HDPE construction
- Convenient hook holder to hang handbags, diapers bags & etc
- Easy to refill dual tissue compartment (HBT-1 or HBT-2 pop up tissue)
- Curve design on the edges for safety and prevention of accident to babies and mothers
- Big bed measurement with maximum load capacity of 50kg
- Build-in adjustable safety buckle strap for baby safety
- Foldable to save space



### IE 93

#### Auto Hand Dryer - Silent

<b>DIMENSION</b>	L27 x W20.2 x H26.5cm
<b>POWER</b>	1500W



### HYBERT HD6

#### Automatic Jet Hand Dryer

<b>DIMENSION</b>	L30 x W20 x H61cm
<b>POWER</b>	1800W



### IE 200

#### V-Design Air Blade Hand Dryer

<b>DIMENSION</b>	L24 x W14 x H39.5cm
<b>POWER</b>	1000W



### SANITARY BIN

#### Standard Sanitary Bin

<b>DIMENSION</b>	L32 x W19 x H60cm
<b>CAPACITY</b>	18L
<b>COLOR</b>	Blue



*Various Types of Cleaning Equipment Cover Different Industries*



# TOOL AND EQUIPMENT

## ▼ MICROFIBER CLOTH

MF25 / MF30

### Microfiber Cloth Value Pack

**PACKING** 5 Pcs / Pack  
**DIMENSION** 40cm x 40cm  
**COLOR** Red / Yellow / Blue / Green / Light blue / sky blue



- Can be used dry or damp, with or without detergent
- Fingerprint removal from glass, mirror, stainless steel, etc
- Removing glaze and polish from painted metals, brass or furniture
- Removing dust easily
- Ideal for household, office, kitchen, restaurant, canteen, pantry, auto care detailing etc



## ▼ MICROFIBER MOP

HDM25

### High Microfiber Duster Set

**DIMENSION** L90.5  
 L50 x W7.5cm (Sleeve)



- Microfiber material Removable Sleeve
- Soft foam material inside and bendable
- Lightweight
- Non-slip aluminium handle (optional telescopic handle to reach higher places)
- Attract and trap dust particles like magnet
- Machine washable



MFD350

### Microfiber Dolly Round Mop

**COLOR**



- Composition of 80% polyester and 20% polyamide (100% high quality microfiber)
- Easy to clean and ultra-soft
- Highly absorbent and Super fast drying, leaving floor dry and safe
- Remove fine dust, dirt, and hair effectively
- Lint free, leave no dust or particles after mopping
- Durable

▼ **KINDER TO YOUR FLOOR**  
 Non-abrasive and uses less detergent



## ▼ MICROFIBER MOP

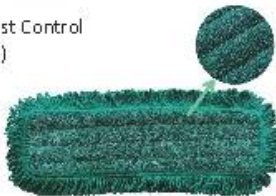
### MFD 40/60

**Microfiber Dust Control Mop**

**LENGTH** 40cm / 60cm  
**COLOR** Green

**REFILL** Microfiber Pad Refill (40cm / 60cm)

Microfiber Dust Control Sleeve (Green)



### MFW 40/60

**Microfiber Wet Mopping System**

**LENGTH** 40cm / 60cm  
**COLOR** Blue

Microfiber Wet Mopping Refill (Blue)

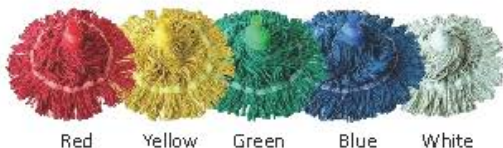


## ▼ DOLLY ROUND MOP

### DW10

**Dolly Round Mop, Looped End**

**COLOR**



Red Yellow Green Blue White

- Loop-End Mop Head Design to reduce unraveling and fraying so that won't get stuck easily at furniture compared to ordinary traditional mop
- Large mopping coverage up to of 35cm
- Durable and Long Lasting, perfect for commercial, industrial and home floor mopping jobs
- Save Time as it can clean twice the surface area in a half time

## ▼ KENTUCKY MOP

### KENTUCKY MOP

**Kentucky Mop Set, Cut End**

**COLOR**



Red Yellow Green Blue White

**USE WITH**



Plastic Mop Head Clip



- A larger, longer, flatter head, can hold and transfer to the floor a far greater quantity of cleaning
- Greater ability in picking up or laying down large amounts of liquid
- Machine washable (remove the clip)
- Lint-free, doesn't leave any cleaning dust or particle
- Effective and economical for commercial and industrial applications

# TOOL AND EQUIPMENT

## ▼ DUST CONTROL MOP

### DCS 60/80 TC

Cotton Sleeve Dust Control Mop

LENGTH 60cm / 80cm  
COLOR White



**REFILL** Cotton Sleeve Refill (60cm / 80cm)  
Save Time on Dusting



► Clean Dust Effectively

### DCS 60/80

Synthetic Sleeve Dust Control Mop

LENGTH 60cm / 80cm



**REFILL** Synthetic Sleeve Refill (60cm)  
Upgrade to Color Coded Dusting System



COLOR Red / Yellow / Green / Blue

**REFILL** Synthetic Sleeve Refill (80cm)



COLOR Red / Blue

► Ergonomic 360 degree rotate design to clean corner easily



### DHH150

Aluminium Handle c/w Screw

LENGTH 150cm  
COLOR Blue



- Made of lightweight, non-rust and strong aluminium for improved productivity
- Long handle is comfortable to use and easy to clean
- Easily maneuver your mop for a fast and efficient cleaning
- Ideal for professional cleaning, healthcare, food service, office buildings, education, manufacturing and heavy duty commercial use

### DCH 60/80

Dust Control Mop Handle

LENGTH 60 / 80cm  
COLOR Blue



► Easy to attach and unattach easily, hold the sleeve tight and will not loosen easily

## ▼ SINGLE MOP BUCKET

**HB 32L**

Single Mop Bucket c/w Side Press Wringer

**DIMENSION** L60 x W40 x H92cm

**CAPACITY** 32L



**OPT** 32L Bucket Wringer Only



**HB MSB81**

Multi Single Mop Bucket c/w Down Press Wringer

**DIMENSION** L91 x W51 x H94cm

**CAPACITY** 35L + 15L + 4L



- Comfortable, upright trolley handle for easy maneuverability
- Extra accessory bucket to keep tools and accessories neat and tidy
- 15L Dirty water bucket
- No spill pouring spout
- Quiet castor trolley

## ▼ DOUBLE MOP BUCKET

- Prevent Cross Contamination with Double Mop Bucket system
- Blue for Clean Water bucket, Red for Chemical Solution bucket
- Quiet castor trolley

**HB DMB46**

Double Mop Bucket c/w Metal Frame Down Press Wringer

**DIMENSION** L86 x W41 x H90cm

**CAPACITY** 46L

**HB DMB46P**

Double Mop Bucket c/w Plastic Frame Down Press Wringer

**DIMENSION** L85 x W44 x H92cm

**CAPACITY** 46L

**OPT** Grey Wringer Only



## ▼ COMPACT MOP BUCKET

**SRM15**

Single Round Mop Bucket with 2 Compartment

**DIMENSION** L43 x W24 x H27cm

**CAPACITY** 15L

**MATERIAL** Premium Plastic



**SP18**

Double Mop Bucket c/w Plastic Frame Down Press Wringer

**DIMENSION** L85 x W44 x H92cm

**CAPACITY** 46L



# TOOL AND EQUIPMENT

## ▼ WINDOW CLEANING

HB UB24

Utility Bucket c/w Wheel

**DIMENSION** L55.5 x W31 x H61cm  
**MATERIAL** Plastic (PP)



HB TBS

Tools Basket (Small)

**DIMENSION** L40.5 x W27 x H17.5cm  
**MATERIAL** Plastic (PP)



C10

Window Cleaning Complete Set



Include

- 1 pc floor and window scraper with 5 blades replacement
- 1 pc sponge
- 1 pc window squeegee with replacement rubber 92cm
- 1 pc cranked joint for telescopic pole
- 1 pc window washer 35cm
- 1 pc telescopic pole in two pieces (2x1.25m)
- 1 pc end cone for telescopic pole

TELEPOLE

2 Joint / 3 Joint Telescopic Pole

**LENGTH** 2 X 0.6M  
2 X 1.5M  
3 X 1.2M  
3 X 3.0M



HB FW40

Floor & Window Scraper

**LENGTH** 22 x 11.5cm  
**MATERIAL** Aluminum, PP Plastic



- Plastic material, anti-rust at the end, strong and firm, flexible to use, durable
- Comfortable handle, thick grip, non-slip and wear-resistant, not easy to break
- The screw fixes the blade, easy to disassemble, easy to replace the blade
- Lightweight material for easy stain removal

HB W14

Window Washer 35cm

**LENGTH** 18.5 X 35cm  
**MATERIAL** Fiber, PP Plastic



HB S14

Window Squeegee

**LENGTH** 14 X 35cm  
**MATERIAL** Rubber, Stainless Steel



## ▼ FLOOR CLEANING

HB RS18

Floor Rubber Squeegee 18" W/ Handle

HB RS22

Floor Rubber Squeegee 22" W/ Handle

HB RS30

Floor Rubber Squeegee 30" W/ Handle

**LENGTH** 16cm x 45/55/75cm  
**MATERIAL** Rubber, PP Plastic



HB LDP

Lobby Dustpan with Aluminium Handle and Broom Set

**DIMENSION** 94 x 32 x 12cm  
**MATERIAL** Rubber, PP Plastic



## ▼ ORGANIZER KIT

BM92

6 Holders & 5 Hooks Organizer Kit

BM60

4 Holders & 3 Hooks Organizer Kit

BM04

4 Holders & 4 Hooks Organizer Kit

BM03

3 Holders & 3 Hooks Organizer Kit



## ▼ OTHER EQUIPMENT

M6 TOOL BELT

Mobile Tool Belt

**LENGTH** L17 x W11cm,  
Packet Depth: 15cm  
**MATERIAL** Nylon, PVC, Dacron



MPC 36

Multipurpose Clips

**LENGTH** 18 x 19cm

Can clip with sponge, towel, cloth to use for cleaning



TS13 STEP STOOL

Two Step Mobile Step Stool

**LENGTH** D40.5 x H34cm  
**MAX LOAD** 128kg



TS17 STEP STOOL

Two Step Folding Step Stool

**LENGTH** D47 x W49 x H58cm  
**MAX LOAD** 100kg



# TOOL AND EQUIPMENT

## ▼ JANITOR TROLLEY

- Made of new high quality plastic
- High-strength thickened structure
- Strong bearing capacity
- Light, easy and convenient to use.
- Reflect a more professional and advanced cleaning service image.

### HB JT 1000

Janitor Cart Trolley c/w Cover

CODE 701-009  
 DIMENSION 120 x 46 x 99.5cm  
 COLOR Grey / Blue



OPT

Mop Bucket



HB 32L

HB M5B81

HB DMB46/46P



Tools Basket



HB TB5

Vinyl Garbage Bag



Yellow Bag

### HB JT 2000

Janitor Cart Trolley c/w Cover

CODE 701-019-BLK  
 DIMENSION 130 x 55 x 100cm  
 COLOR Black



### HB JT 2000C

Complete Janitor Cart Trolley c/w Twin Bucket & Wringer

CODE 701-019C-BLK  
 DIMENSION 128 x 50 x 96cm  
 COLOR Black



### HB JT 3000

Multi Function Trolley c/w Twin Bucket and Tool Buckets

CODE 701-019A  
 DIMENSION 131.2 x 64.8 x 115cm  
 COLOR Grey, White Door



### HB JT 3000D

Multi Function Trolley with Dome Head c/w Twin Bucket

CODE 701-019D  
 DIMENSION 151.4 x 64.8 x 131cm  
 COLOR Grey



## ▼ LINEN TROLLEY

### HB QLT-8156

Quadrate Linen Trolley c/w Canvas Bag

CODE 701-025  
 DIMENSION 94 x 54.5 x 89.5cm  
 COLOR Khaki



### HB XCT-8157

X-Shape Chorme Trolley c/w Canvas Bag

CODE 701-026  
 DIMENSION 62 x 62.5 x 98.5cm  
 COLOR Khaki



### HB MTS-8172

Multifunctional Maid Trolley Service Cart

CODE 701-048  
 DIMENSION 154 x 54 x 128.5cm  
 COLOR Grey



OPT

Classified Layer



## UTILITY CART

- Three-layer design provides generous options to store and display many items
- Easy to clean: simply wipe it clean with a damp cloth
- Material: Heavy Duty Plastic Tray with Aluminium Tube



### HB 3TT & 3TT-X

#### 3-Tray Utility Cart

CODE	DIMENSION	COLOR
① 701-005	L102 x W50 x H96cm	Grey
② 701-006	L84.5 x W43 x H95cm	Grey / Black



OPT  
Buckets



### HB 3TT-PRO

#### 3-Tray Utility Cart (Large) c/w Twin Bucket

CODE	701-051-BLK
DIMENSION	L139.5 x W52.4 x H94cm
COLOR	Black



### HB KUT-8186

#### Kitchen Utility Trolley Cart

CODE	701-050
DIMENSION	L103.6 x W50.5 x H89.2cm
COLOR	Grey



### HB RC-8167

#### Restaurant Cart c/w Bucket (s)

CODE	701-007
DIMENSION	L139.5 x W52.4 x H94cm



## BABY CHAIR

### HB BABY CHAIR

#### Baby Chair with Tray (Adjustable)

CODE	701-024-A
DIMENSION	L54.8 x W61.1 x H73.9cm
COLOR	Grey



## ▼ 3M FLOOR PAD

- Improve productivity - takes less time to achieve better results
- Consistent performance - abrasive minerals distributed uniformly
- Longer life - 4X last longer as many competitive pads
- Fewer chemicals - Effective even using only water for many floor maintenance operations.
- Environmentally responsible - Green Seal Certified

### 3M Black Pad

#### Suitable for Stripping

To remove finish, sealer and contaminants from the floor surface.



### 3M Blue Pad

#### Suitable for Scrubbing

To provide a fresh new surface for finishing.



### 3M Red Pad

#### Suitable for Buffing

To remove scuffs and black heel marks and enhance floor appearance.



### 3M White Pad

#### Suitable for Polishing

To remove scuffs and marks, repair finish, improve gloss and image clarity.



## ▼ 3M SCOURING PAD



### 3M #8541

#### Suitable for Stripping

To remove finish, sealer and contaminants from the floor surface.

CODE CL-D20



### 3M #96

#### General Purpose Scouring Pad

For daily cleaning of pots, pans and kitchen equipments.

CODE OT-D119



### 3M #98

#### Light Duty Cleansing Pad

For cleaning delicate surfaces like porcelain, glass and ceramic.

CODE OT-D129



### 3M #9030

#### Suitable for Polishing

To remove scuffs and marks, repair finish, improve gloss and image clarity.

CODE OT-D133



### 3M #9650

#### Suitable for Polishing

To remove scuffs and marks, repair finish, improve gloss and image clarity.

CODE SJ5-D33



## ▼ 3M SURFACE MAINTENANCE

### 3M Stainless Steel Polish Cleaner

#### Cleans and Polishes in One-Step

CODE CL-D11  
VOLUME 21oz  
PACKING 12 Cans/Ctn



- With a high gloss formula, it wipes clean with no streaks or buildup, resists fingerprints and masks surface blemishes.

### 3M TroubleShooter

#### Baseboard Stripper (Aerosol)

CODE CL-D42  
VOLUME 21oz  
PACKING 12 Cans/Ctn



- It is designed to remove heavy soils, wax and floor finish buildup from hard surfaces.

## DIAMOND PAD

### HB Angle Marble Pad

Professional Marble Polishing Kit Solution - Restoration

**DIMENSION** 17 inch  
**GRIT** 1#- 5#

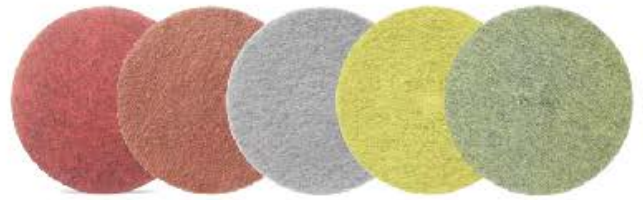


- Mechanical polishing with water only to achieve mirror-finish
- Especially good for deep restoration and polishing on marble
- Fast polishing with high gloss end
- Durable and Long-lasting shine
- Longer lifetime
- Environmentally-friendly and cost-effective

### HB Epoxy Maintenance Polish Pad

Deep Restoration and Heavy-duty Cleaning

**DIMENSION** 17 inch  
**GRIT** 200#, 400#, 800#, 1500#, 3000#



USED WITH



Hybert Scrubber Machine (P154B/P175/2.5HP)

\*Refer page 14

### HB Glossy Diamond Pad

Professional Polishing Solution for New Marble

**DIMENSION** 4 inch/100mm  
**GRIT** 50#, 100#, 200#, 400#, 800#, 1500#, 3000#  
**BASE MATERIAL** Resin-bond



- Super Lifespan
- No orange peels with mirror-finish
- Gloss stays 10 times 10\* r than any tradition routine
- Mechanical polishing with water only

### HB Flexible Diamond Pad

Professional Polishing Solution for New Marble

**DIMENSION** 4 inch/100mm  
**GRIT** 50#, 100#, 200#, 400#, 800#, 1500#, 3000#  
**BASE MATERIAL** Resin-bond



### HB Metal Pad

Construction Lippage Removal and Wet Grinding

**DIMENSION** 4 inch/100mm  
**GRIT** 30#, 60#, 120#  
**HEIGHT** 4mm



*Fit in both indoor and outdoor purposes.*



▼ **STEP-ON BIN**

**ST30/ST45/ST68/ST88**

**Step-on Bin**

CODE	DIMENSION	CAPACITY	COLOR
7D1-100	L41 x W39.8 x H43.5cm	30L	Grey
7D1-100	L41 x W39.8 x H60cm	45L	Grey
7D1-100	L50.4 x W41.2 x H67.3cm	68L	Grey
7D1-100	L50 x W41 x H82cm	88L	Grey



**OPT Add Recycle Sticker**

CODE	CAPACITY
① 7D1-100	30L
② 7D1-100	45L
③ 7D1-100	68L



**100L/120L/240L STEP ON BIN**

**Heavy Duty Step-on Two Wheel Bin**

CODE	DIMENSION	COLOR
7D1-1001-100L	L55.7 x W48.3 x H83.5cm	Grey
7D1-1001-120L	L55 x W50 x H93cm	Green
7D1-1001-240L	L73.5 x W57.5 x H109cm	Green



▼ **TWO WHEEL BIN**

**120L/240L 2-WHEEL BIN**

**Two-Wheel Bin**

CODE	DIMENSION	CAPACITY	COLOR
7D1-1003-GRN	L55 x W48 x H95cm	120L	Green
7D1-1004-GRN	L73.5 x W57.5 x H109cm	240L	Green



**660L 4-WHEEL BIN**

**Four-Wheel Bin**

CODE	DIMENSION	CAPACITY	COLOR
7D1-1006-GRN	L129 x W80 x H102cm	660DL	Green



**OPT Other Color Options**



# BUILDING SERVICES

## ▼ FLOOR MATTING

### HB RIB MAT

#### Needle Rib Mat

**MATERIAL** 100% polypropylene needle punched fibres  
**THICKNESS**  $\pm 3/8''$  ( $\pm 9.5\text{mm}$ )  
**COLOR** Red / Blue / Black / Grey / Brown / Green

- 100% polypropylene needle punched fibres channels dirt and moisture away from foot traffic
- Solid vinyl backing reduces mat movement and protects the floor.
- Rugged groove structure provides long wear and color fastness.
- Easy to clean - vacuum, sweep or hose down / mopping.



### HB STD COIL MAT

#### PVC Normal Duty Coil Mat

**MATERIAL** PVC  
**THICKNESS**  $\pm 14\text{mm}$   
**COLOR** Grey / Green / Black / Yellow / Red / Brown / Blue

- Remove dirt and moisture from shoes.
- Prevent debris from entering the building.
- Keep entrance ways looking clean and presentable.
- Reduce slips, trips and falls from slip hazards on wet floors.
- Easy and inexpensive to maintain. Shake off, vacuum or rinse out.



### HB HEAVY DUTY COIL MAT

#### PVC Normal Duty Coil Mat

**MATERIAL** PVC  
**THICKNESS**  $\pm 16\text{mm}$   
**COLOR** Grey / Red / Black / Brown / Green / Blue

- Heavy duty vinyl loops is durable and long lasting.
- Scrape dirt and grime off shoes and boots.
- Unbacked construction allows dirt and moisture to fall through the matting, keeping feet clean and dry and allows easy clean-up.
- Remains good looking & performs well under heavy traffic condition.



## RESTORATION CONSULTATION AND SERVICES

### Renewation of Floor Matting

We have consulting and servicing our clients to restore their floor mat, which helped their places become neat and tidy.



▼ **QUEUE UP STAND**

**HB QS101**

**S/Steel Retractable Belt Q-Up Stand**

**CODE** 701-037  
**DIMENSION** 6.3 (Pole Dia.) x 32 (Base Dia.) x H91cm  
**BELT COLOR** Blue / Black / Red



**HB QS201**

**S/Steel U-shape Q-Up Stand**

**CODE** 701-038  
**DIMENSION** 6.2 (Pole Dia.) x 35 (Base Dia.) x H90cm  
**BELT COLOR** Black / Red



**HB QS202**

**Black Steel U-shape Q-Up Stand**

**CODE** 701-038-DD-BLK  
**DIMENSION** 5 (Pole Dia.) x 35 (Base Dia.) x H88cm  
**BELT COLOR** Black



▼ **A4 FRAME**

**HB S/STEEL A4 FRAME**

**A4 Frame for Q-Up Stand**

CODE	DIMENSION	TYPE	SUITABLE FOR
① 701-039H-A4	L32 x W22cm	Horizontal	QS101 / QS201
② 701-039V-A4	L22 x W32cm	Vertical	QS101 / QS201



▼ **A FLOOR SIGN**

**HB A FLOOR SIGN (YELLOW)**

**A4 Frame for Q-Up Stand**

CODE	WORDING
① 701-004-CIP	Cleaning in Progress
② 701-004-WF	Wet Floor





**HB HYGIENE SDN BHD**

**TEL :** 07-699 1686  
**FAX :** 07-699 6034

**Office H/P** : 019-750 6246  
**Dishwasher Customer Service** : 019-719 6246  
**HB Account Department** : 011-6936 2788

**📍** No. 12, Jalan Sri Jaya, Taman Sri Jaya,  
81500 Pekan Nenas, Pontian, Johor.

**✉** hbhygiene@yahoo.com  
hbhygiene@outlook.com (Account)

**🌐** [www.hbhygiene.com](http://www.hbhygiene.com)