



# WIRED & WIRELESS ALARM SYSTEM

**One Home, One Security**





Home security should be important to everyone whether you live in a house or an apartment. Burglar alarm systems not only protect your family while at home, they can often provide a quick link to the authorities while you're away.

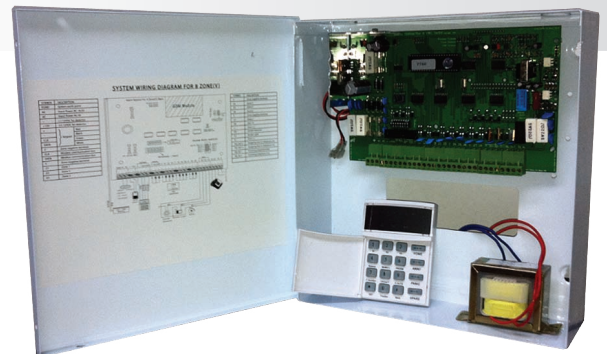
**VFocus** alarm series offers the intelligent 8, 10 and 16 zones system to protect your premise. The control panels have been designed with a very simple purpose in mind-to detect alarm and report them.

**VFocus** intelligent 8,10 and 16 zones system comprises with 8, 10 & 16 programmable zones respectively, offers the advance features alarm series offers interior and perimeter protection, Home Automation function and wide range of configurable features to suit your life style.



## General Features for **VFocus** Alarm Series:

- Support up to 4 keypads
- 2 partition and 4 home automation outputs for momentary \*
- Individual sensitivity for all zones
- Individual Chime zone & Individual zone Bypass function
- View alarm memory function
- Quick key entry for Away, Home, Panic, Zone Bypass, Review event memory mode
- Fire, Police and Medical Alarm
- Programmable siren On/Off squawk for Arm and Disarm
- Dual reporting for CMS and Personal format
- Call in with function menu selection in voice \*
- Remote access to Away arming, Home arming and Disarm system
- 4 Personal reporting dialing numbers
- Fax Bypass
- Anti-takeover function
- System supervision features
- False Alarm prevention



## OPTIONAL ACCESSORY

### 1. GSM Module

GSM Module is an inexpensive and reliable GSM Alarm autodialer. The GSM network is used and it is especially suitable for locations, where there is no fixed telephone or in the event of telephone fails.

The module is compatible with all mobile providers (e.g. Maxis, Digi, Celcom, etc) and it is integrated with voice-feedback ability during call in or call out report. Choose "SIM" to suit best network coverage in the area the unit is to be installed.



GSM Module

### 2. Home Automation

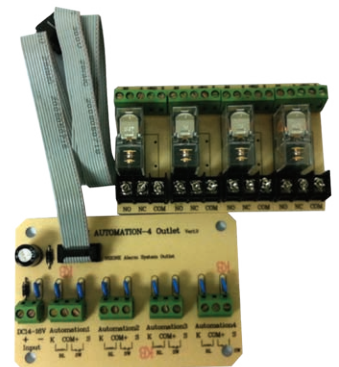
**VFocus** Security Systems provides you with a high level of comfort and security. Besides offering burglary detection, it gives you "smart" home automation function. You can call up your system and perform system arming / disarming and also activate Home Automation. Just touch a few keys on your telephone, you may switch ON your porch light or some electrical devices from anywhere without much hassle, you can even have Alarm and Home Automation reports in voice.\*

### 3. LED & LCD Keypad

The LED keypad provides easy-to-understand information about the status of your security system by lighting words corresponding to important functions on the LED display. The LCD keypad offers complete system control in an elegant, compact design that's surprisingly affordable and it's equipped with a backlit interactive LCD screen which provides status information and feedback for users.




LED Keypad



Home Automation

# HOW IS THE VFocus ALARM SYSTEM PROTECT YOUR PREMISE?

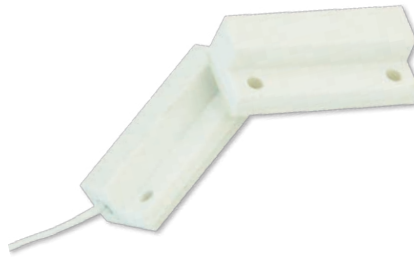
 VFocus Alarm system has put together a complete range of home security solutions. The system provides a superb interface to monitor data from door, window and motion sensors. Any violations of these sensors while the system is armed will result in an alarm condition. This will reported to you and your security company via the telephone communicator and/or radio transmitter.

## Accessory For Alarm System



### Vibration Sensor

Vibration sensor is a simply device that detects shocks, and is used to detect an attempted break in by forced entry.



### Magnetic Sensor

Magnetic sensor is a device that simply lets the alarm control panel know if a door, shutter or window is open or closed.



### Smoke Detector\*

A smoke detector is a device that detects smoke and issues an alarm to alert nearby people that there is a potential fire.



### Passive Infrared Motion Detector (PIR)\*

The PIR Detector provides extra protection for those areas inside your premise (e.g. hallways, doorways, stairways, etc.) where an intruder might pass through.



### Panic Button\*

Panic button is mainly use in the event of emergency. Ideal locations might be installed at the front door, or within reach of your bed.



### Wireless Receiver\*

Adding a wireless solution to a hard-wired alarm system can be achieved with this receiver. It has a single output that can be used to communicate with most security system and support up to 16 wireless transmitters and devices.



### Wireless Transmitter\*

A feature for this wireless transmitter is to eliminate the need to run wire from the sensor to the main alarm controller while it still remains function as wiring sensor. (2 way communication)



### Keypad

The keypad displays continuous information about the status of the alarm system. The idea location might be installed at the master bedroom or living room, which is convenience for user to operate the system.



### Siren & Strobe Light

Siren & Strobe light is an audio and visual indicator. When an intrusion is taken place, the system will turn on the siren & strobe light to notify user and people around the premises.

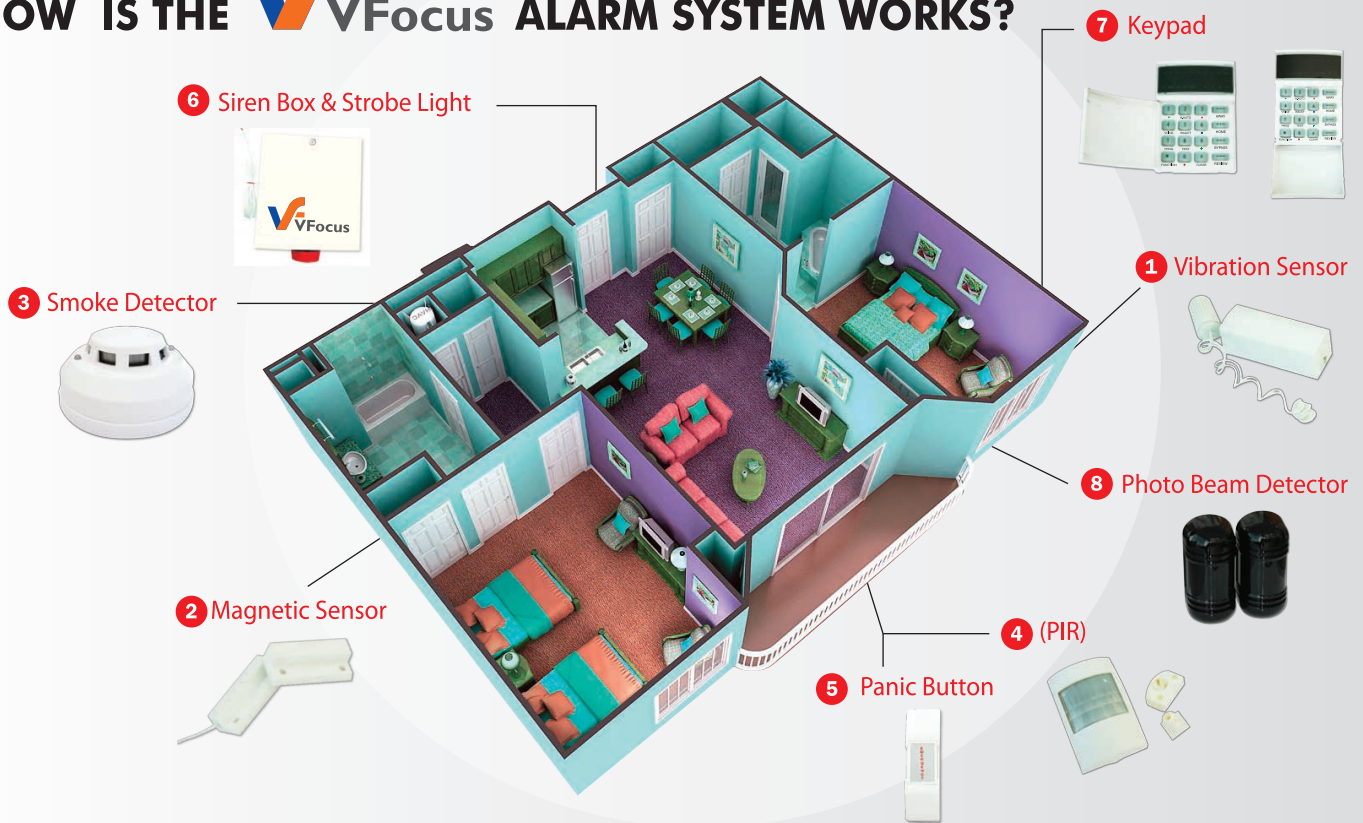


### Photo Beam Detector\*

Photo Beam Detector is best used when detecting movement across larger areas. Photo Beam Detector has separate transmitter and receiver units, and movement is detected by something crossing the beam created between the units.

\* Optional Item

# HOW IS THE VFocus ALARM SYSTEM WORKS?



FEATURES	Vz-8	Vz-8v	Vz-10v	Vz-16v
Programmable zones	8	8	10	16
Zone partition	-	2	2	2
Maid partition	-	Y	-	Y
User code including Master & Installer code	9	9	9	9
Away/Home arming mode	Y	Y	Y	Y
Delay, Instant, Handover, 24 hours	Y	Y	Y	Y
Pulse	Y	Y	Y	Y
Programmable Exit and Entry delay	Y	Y	Y	Y
Key-switch arm and disarm	Y	Y	Y	Y
Individual Door Chime mode	Y	Y	Y	Y
Force arming	Y	Y	Y	Y
Individual zone sensitivity	Y	Y	Y	Y
Individual zone bypass	Y	Y	Y	Y
Intelligent zone counter	-	Y	-	Y
Programmable arm and disarm siren squawk	Y	Y	Y	Y
Programmable force arming siren warning	Y	Y	Y	Y
Zone alarm memory review mode	Y	Y	Y	Y
Dureless alarm	Y	Y	Y	Y
Auto daily test	Y	Y	Y	Y
Dual reporting	Y	Y	-	Y
SMS Reporting	-	-	-	optional
Build In GSM Module	-	-	-	optional
Contact ID for CMS reporting format	Y	Y	Y	Y
Number of programmable CMS telephone numbers	2	2	2	2
Number of programmable Personal telephone numbers	4	4	4	4
Nuber of CMS account	1	1	1	1
Remote access to arm/disarm	Y	Y	Y	Y
Fax bypass option	Y	Y	Y	Y
Fail to communicate output	Y	Y	Y	Y
Police, Medical emergency	Y	Y	Y	-
Fire emergency	Y	Y	Y	Y
Panic emergency	Y	Y	Y	Y
Auto arming and disarming	Y	Y	Y	Y
Keypad lockout	Y	Y	Y	Y
Anti takeover	Y	Y	Y	Y
Voice-assisted programming	-	Y	Y	Y
Personal reporting format in voice	-	Y	Y	Y
Personal reporting format in beeping tones	Y	-	-	-
Home Automation with feedback (PGM output)	-	-	8	4
Individual selection of latch or momentary for Home Automation	-	-	Y	Y
Programmable Home automation output to activate upon alarm being triggered	-	-	Y	Y
Auto ON/OFF of Home Automation output	-	-	Y	Y
<b>OPTIONAL ITEM</b>				
Wireless zone	8	8	10	16
Transmission range	100 meter	100 meter	100 meter	100 meter
Battery type	Lithium	Lithium	Lithium	Lithium
<b>SPECIAL ITEM</b>				
- 'Spy Now' Function*				
- Voice Activated Alarm*				
- 2 way communication* *				



Authorised Dealer

\* Available for Vz-10v & Vz-16v only

\*\* Available for All Models

# Specification are subject to change without prior notice.