



### Model: AZNVR8000-32EH2

#### FEATURES:

- Support IPC 32ch / 25ch 5MP or 16ch/9ch 8MP
- Support P2P cloud, including cloud connecting, cloud monitoring, cloud transmitting to access IPC and NVR at any time and any place
- Support ONVIF Protocol-High profile S
- Support preview image and playback of electronic amplification
- Support by event query, playback, backup video files
- Support all channels with screen display, support 4 screen the main circulation preview, synchronous playback 4ch;
- Provide network centralized monitoring management software
- H.265 / H.264 Compression
- Video backup according to time and length of time to backup, backup can be accurate to seconds (backup accurate)
- Hard disc sequence writing, starting with zero track writing data, improved efficiency of hard disk 2.5 times.
- Smart Analysis : Line Crossing, Area Detection, Missing and unattended object, object counting
- 2 HDD slot (up to 8TB per slot)
- Alarm input / output, audio input / output

#### Supported Brand



SONY

Panasonic

SANYO



AEVISION®

HIKVISION

dahua

海康

Histream



#### Ordering Information

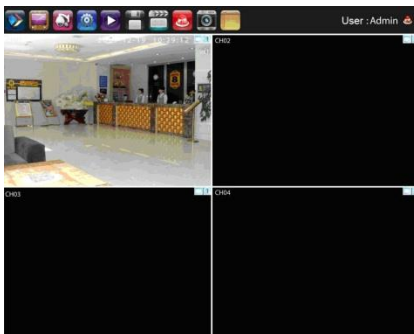
Model No	AZNVR8000-32EH2
Dimension (LxHxW)	350mm x 68mm x 240mm
Weight	2.9KG
Product Box Size (mm)	409 x 365 x 129 mm
Carton Size; Qty/CTN	675*385*425mm; 5pcs/ctn

#### Precaution

- Do not install NVR with temperature above 50°C or under -10°C.
- Do not install in a places with high humidity
- The back of the DVR should be away from other devices or the wall above 6cm in order to release heat
- Do not drop the NVR and avoid physical shock.
- Only Professional and qualified technician can install and test the NVR

Model No	AZNVR8000- 32EH2
Operating System	Embedded LINUX operating system
Image Code Control	Image code quality adjustable, variable bit stream optional.
Stream	Each channel can set main stream and sub stream.
Video Standard	8MP / 5MP/ 3MP/ 1080p / 960p / 720p
Monitoring Image Quality	8MP or 1080p
Compression	H.265 / H.264
Image Motion Detection	Each screen can set multiple detection areas and set 6-level sensitivity (IPC Support)
Recording Playback Quality	1ch 4K or 4ch 1080p
Recording Mode	Support manual, auto, motion detection, alarm trigger record mode.
Region Cover	Every channel can set 4 cover regions (IPC Support)
Backup Way	Support U disk, USB mobile HDD, USB DVD-RW, network storage and backup.
Operation Way	Mouse
Local Login	User name and password.
Recording Storage	Local HDD, network
Video Input	32ch / 25ch 5MP IPC (2592 x 1944) @ 30fps per ch or 16ch / 9ch 4K 8MP IPC (4096*2160) @ 30fps per ch
Audio Input	1:1 network audio ; 1ch RCA input
Audio Output	1ch RCA output
Video Output	1ch VGA+1ch HDMI
Network Port	1 RJ45, 10M/100M/1000M self-adaptive LAN port
RS485 Port	Full duplex standard 485 port.
USB Port	2 x USB 2.0 ports
Alarm Input / Output	4ch Input / 1ch Output
HDD Port	2 x SATA (each support 8TB)
Mobile Surveillance	Support(iPhone, Windows Mobile, Android) smart phone
Smart Analysis Function	Line Crossing, Area Detection, Missing and unattended object, object counting
ONVIF	ONVIF High Profile S
General	
Power Supply	DC12V, 3A
Power Consumption	<20W, without HDD
Working Temperature	-10°C ~ +55°C
Working Humidity	10% ~ 90%RH
Dimension	350mm (W) × 240mm (L) × 68mm (H)
Weight(without HDD)	2.9kg

Specifications subject to change without notice. © 2019.All rights reserved.



← NVR Live View

CMS Live View →

