



Model: AZNVR8000-64EX9

FEATURES:

- Support IPC 64ch 8MP @ 30fps per ch
- Support P2P cloud, including cloud connecting , cloud monitoring, cloud transmitting to access IPC and NVR at any time and any place
- Support ONVIF Protocol-High profile S
- Support preview image and playback of electronic amplification
- Support by event query, playback, backup video files
- Support all channels with screen display, support 4 screen the main circulation preview, synchronous playback 4ch ;
- Provide network centralized monitoring management software
- H.265 / H.264 Compression
- Video playback time column display, video type with that color, video query is very convenient
- Video backup according to time and length of time to backup, backup can be accurate to seconds (backup accurate)
- Hard disc sequence writing, starting with zero track writing data, improved efficiency of hard disk 2.5 times.
- Smart Analysis : Line Crossing, Area Detection, Missing and unattended object, object counting
- 16 HDD slot (up to 8TB per slot)
- Alarm input / output, audio input / output
- Support Hot-swappable HDD RAID0, RAID1, RAID5, RAID6, RAID10

Supported Brand



SONY

Panasonic

SANYO



AEVISION®

HIKVISION

dahua

海康

Histream

瀚流网络

TOPSEE

天视通

Launch

朗驰

WISION

中盈器

Ordering Information

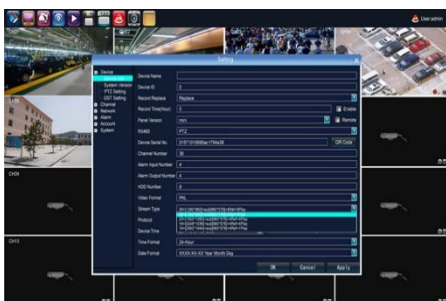
Model No	AZNVR8000-64EX9
Dimension (LxWxH)	440mm x 432mm x 90mm
Weight	7.4KG
Product Box Size (mm)	539 x 550 x 225 mm
Carton Size; Qty/CTN	555*545*470mm; 2pcs/ctn

Precaution

- Do not install NVR with temperature above 50°C or under -10°C.
- Do not install in a places with high humidity
- The back of the DVR should be away from other devices or the wall above 6cm in order to release heat
- Do not drop the NVR and avoid physical shock.
- Only Professional and qualified technician can install and test the NVR

Model No	AZNVR8000-64EX9
Operating System	Embedded LINUX operating system
Image Code Control	Image code quality adjustable, variable bit stream optional.
Stream	Each channel can set main stream and sub stream.
Video Resolution	8MP, 5MP, 3MP, 1080P @30fps
Compression	H.265 / H.264
Image Motion Detection	Each screen can set multiple detection areas and set 6-level sensitivity (IPC Support)
Recording Playback	16ch × 1080P / 9ch × 5MP / 4ch × 8MP
Recording Mode	Support manual, auto, motion detection, alarm trigger record mode.
Region Cover	Every channel can set 4 cover regions (IPC Support)
Backup Way	Support U disk, USB mobile HDD, USB DVD-RW, network storage and backup.
Operation Way	Mouse
Local Login	User name and password.
Video Input	64 x 4096*2160)+sub[960*576]+4Ref+4Play 64ch 8.0MP IP Camera
	64 x (2592*1944)+sub[960*576]+4Ref+9Play 64ch 5.0MP IP Camera
	64 x (1920*1080)+sub[720*576]+4Ref+16Play 64ch 2.0MP IP Camera
Audio Input	1:1 network audio
Audio Output	1ch RCA
Video Output	1ch VGA+1ch HDMI
Network Port	2 RJ45, 10M/100M/1000M self-adaptive LAN port
RS485 Port	Full duplex standard 485 port.
USB Port	1 x USB 3.0 ports, 2 x USB 2.0 ports
Alarm Input / Output	4ch Input / 4ch Output
HDD Port	9 x SATA (each support 8TB)
RAID	Hot-Swappable RAID0, RAID1, RAID5, RAID6, RAID10
Mobile Surveillance	Support(iPhone, Windows Mobile, Android) smart phone
Smart Analysis	Line Crossing, Area Detection, Missing and unattended object, object counting (Only 8ch Support Smart Analysis)
General	
Power Supply	ATX110-220V 250W 50-60Hz
Power Consumption	<30W, without HDD
Working Temperature	-10°C~+55°C
Working Humidity	10%~90%RH
Dimension	432mm (W) x 440mm (L) x 90mm (H)
Weight(without HDD)	7.4kg

Specifications subject to change without notice. © 2019.All rights reserved.



← NVR Live View

CMS Live View →

