

Avantis

AXI WEB SERVER MODULE

USER MANUAL



CONTENTS

CHAPTER 1: SYSTEM LOGIN AND WEB PAGE LAYOUT	1
1.0 ACCESSING THE WEB PAGE	1
1.1 USER AUTHORITY	2
1.1.1 MASTER USER	2
1.1.2 USER/ GUEST SETTING	2
1.1.3 INSTALLER ACCESS CONTROL	3
1.2 REAL TIME CLOCK	3
1.3 SYSTEM LAST STATE STATUS	3
 CHAPTER 2: AX1 SYSTEM CONTROL AND STATUS VIEWING	 4
2.0 MASTER CONTROL AND SETTING	4
2.1 CHECKING SYSTEM STATUS AND CONTROLLING	4
2.1.1 ZONE STATUS	4
2.1.2 ARM	5
2.1.3 DISARM	5
2.1.4 IO STATUS	5
2.1.5 CLEAR ALARMED MEMORY	5
2.1.6 COMMAND REJECTED MESSAGE	6
2.2 MODULE CONFIGURATION	6
2.2.1 SITE INFO AND USER LOGIN	6
2.2.2 DYNAMIC DNS CONFIGURATION	7
2.2.3 TCP/IP CONFIGURATION	7
2.2.3.1 WHEN ENABLE DHCP	8
2.2.3.2 WHEN DISABLE DHCP	8

2.3	MISCELLANEOUS SETTING	9
2.4	SYSTEM TROUBLE	9
2.5	EDIT TIMER	10
2.5.1	ARM TIMER	10
2.5.2	DISARM TIMER	10
2.5.3	IO ON TIMER	11
2.5.4	IO OFF TIMER	11
2.5.5	REAL TIME CLOCK	12
CHAPTER 3:	LOGOUT FROM WEB SERVER SYSTEM	13
3.0	LOGOUT FROM SYSTEM	13
3.1	MANUAL LOGOUT	13
3.2	AUTO LOGOUT	13

CHAPTER 1: SYSTEM LOGIN AND WEB PAGE LAYOUT

1.0 Accessing the Web Page

Access to Login Page

1. Open the Internet browser and key in the Host Name “WSM” at the address bar of the internet browser and press Enter.

OR

1. Enter the IP address of the web server module at the address bar of the internet browser and press Enter. The internet browser will direct it to the Login page and follow the instructions as below:

Login Page

Avantis™

Security and Home Automation System

Login

Username :

Password :

Login Cancel

Enter 'Master' into username textbox for first time login. The user can change the username in the site info & user login page

Click 'Login' to access the page after username and password is entered

Click 'Cancel' to clear the entered username and password.

Enter '111111' into password textbox

© 2010 O.Y.I. TECHNOLOGY

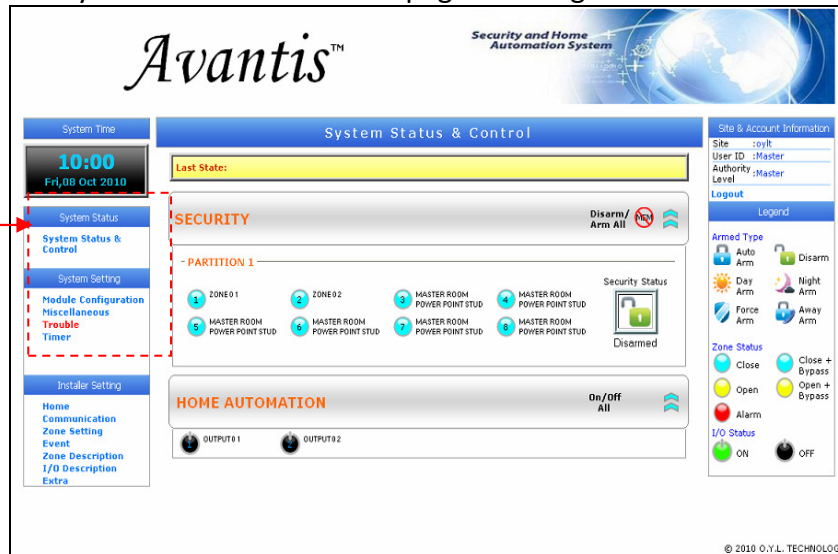
*Note: The user should not access the website within half minute after the system is switch on as its need some times to standby. The interruption may cause login failed or no data in the webpage.

1.1 User Authority

1.1.1 Master User

- Redirect to system status and control page after login succeeded.

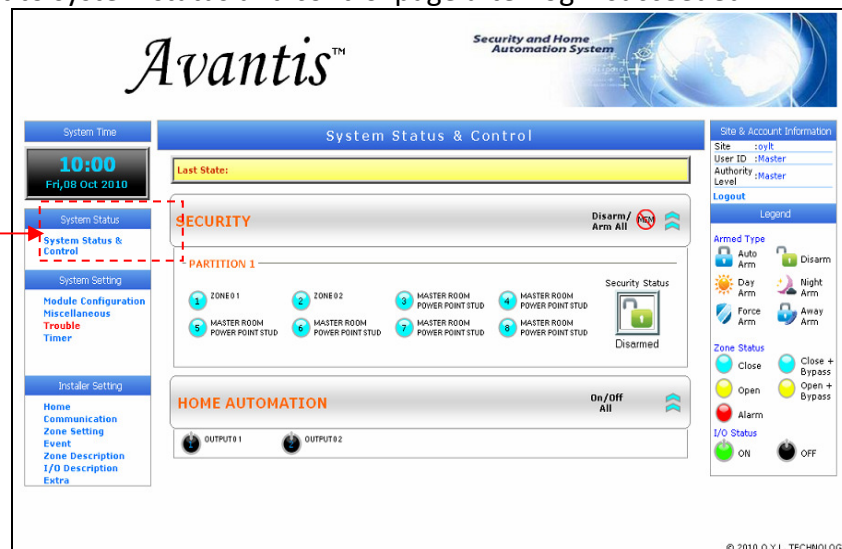
User able to click and access system status and system setting items



1.1.2 Users/ Guest setting

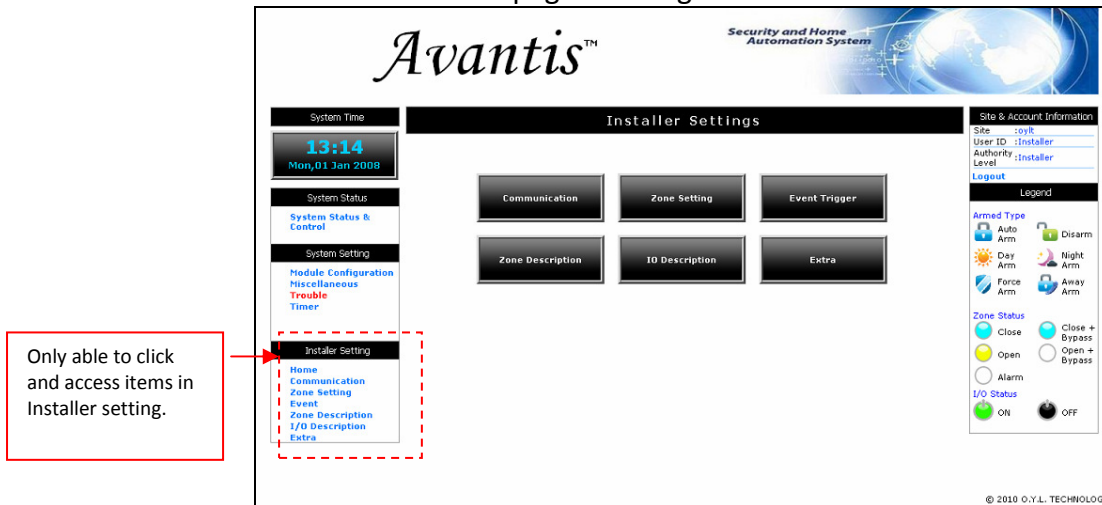
- Master user must set the username for users/ guest in the 'site info and user login' page.
- Redirect to system status and control page after login succeeded.

Only able to click and access system status and control page.



1.1.3 Installer Access Control

- Master user must set the username for installer in the 'site info and user login' page.
- Redirect to installer home page after login succeeded.

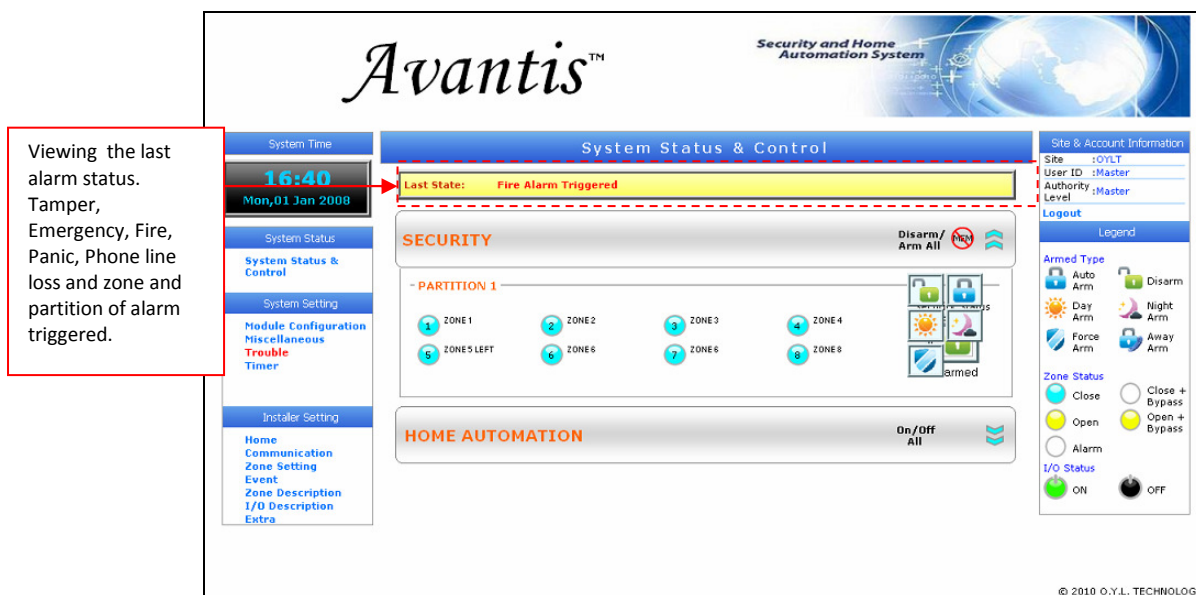


1.2 Real Time Clock

- The following is the System Time which indicates the current Time, Date & Day.



1.3 System Last State Status



CHAPTER 2: AX1 SYSTEM CONTROL AND STATUS VIEWING

2.0 Master Control and Setting

2.1 Checking System Status and Controlling

The screenshot shows the Avantis web interface with the following annotated features:

- Partition:** Points to the 'Partition' dropdown menu in the top left.
- Zone:** Points to the 'Zone' button in the left sidebar, with the instruction: 'Click To Bypass/Unbypass.'
- Zone Description:** Points to the 'Zone Description' button in the left sidebar.
- IO:** Points to the 'IO' button in the left sidebar, with the instruction: 'Click To On/ Off'.
- IO Description:** Points to the 'IO Description' button in the bottom center.
- On/Off All:** Points to the 'On/Off All' button in the bottom center, with the instruction: 'Mouse over the icon then clicks to on/off all.'
- Arm/Disarm All:** Points to the 'Disarm/Arm All' button in the top right, with the instruction: 'Mouse over the text then dropdown menu is drop, clicks to arm/disarm all.'
- Clear Alarm Memory:** Points to the 'Clear Alarm Memory' button in the top right, with the instruction: 'Click to clear alarm memory.'
- Arm/Disarm:** Points to the 'Arm/Disarm' button in the bottom right, with the instruction: 'Mouse over the icon then dropdown menu is drop, clicks to arm/disarm.'

2.1.1 Zone Status






Allow the user to monitor current zone status and bypass the zone by one-click. Accessibility is fully depending on the authorization level awarded to the particular user or guest. The menu of this features are as follow.

Icon	Definition
	Close State -Indicate by cyan color. Close and Bypass State -Indicate by cyan color with blinking.
	Open State -Indicate by yellow color. Open and Bypass State -Indicate by yellow color with blinking
	Alarmed State -Indicate by red color with blinking.

2.1.2 Arm

This feature allows the user to monitor current arming status.
Allow the user to arm all the partitions or particular partition.
Accessibility is fully depending on the authorization level awarded to the particular user or guest.


The menu of this features are as follow.

Icon	Definition
	<u>Auto Arm</u> -Indicate that current partition is in auto arm state
	<u>Day Arm</u> -Indicate that current partition is in day arm state
	<u>Force Arm</u> -Indicate that current partition is in auto arm state
	<u>Night Arm</u> -Indicate that current partition is in night arm state
	<u>Away Arm</u> -Indicate that current partition is in away arm state

2.1.3 Disarm



This feature allows the user to monitor current disarming status.
Allow the user to disarm all the partitions or particular partition.
Accessibility is fully depending on the authorization level awarded to the particular user or guest.

The menu of this features are as follow.

Icon	Definition
	<u>Disarm</u> -Indicate that current partition is in disarm state


2.1.4 IO Status

Allow the user to monitor the current IO status and On/Off the IO by one-click on the icon.

Icon	Definition
	<u>On</u> -Indicate that IO is on
	<u>Off</u> -Indicate that IO is off

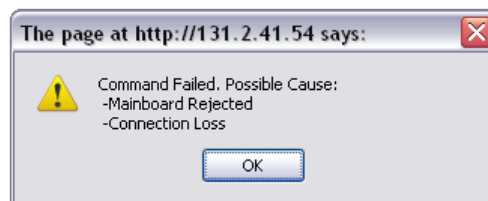
2.1.5 Clear Alarmed Memory

This feature allows the user to clear the alarmed memory.

Icon	Definition
	<u>Clear Alarmed Memory</u> -Allow the user to clear the alarmed status.

2.1.6 Command Rejected Message

- Message box is prompt out if the action is rejected by the system or connection to the WSM was lost.



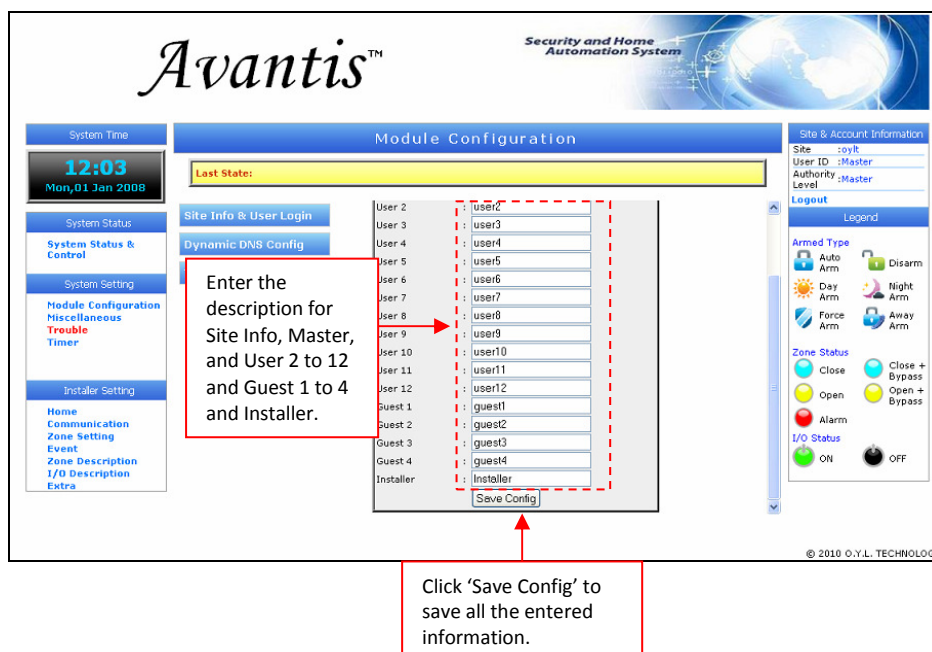
- Message box is prompt out if connection to the WSM was lost.



*Note: The zone's icon will not take action if bypass is disabled in zone setting or cause by the user limitation. Arm/ Disarm also will not take action if it is disabled as user authority.

2.2 Module Configuration

2.2.1 Site Info and User Login



- Redirect to success page after 'Save' button is click and will redirect back when it is successfully saved.

*Note: The entered description is needed during user login. It works as the user name. For the password, user needs to set it in the alarm keypad.

2.2.2 Dynamic DNS Configuration

Avantis™ Security and Home Automation System

System Time: 12:14 Mon, 01 Jan 2008

Module Configuration

Dynamic DNS Configuration

DDNS Service : No-IP (www.no-ip.com)

User Name : tanow@oyltech.com

Password : *****

Host : oyl.no-ip.org

Save Config

Select Any DDNS Service:
-No-IP
-DynDNS
-DNS-O-Matic

Username and password are the registered in the DDNS service page (www.no-ip.com). The host is set in the page.

Click 'Save Config' to save all the entered information.

- Redirect to success page after 'Save' button is click and will redirect back when it is successfully saved.

2.2.3 TCP/IP Configuration

Avantis™ Security and Home Automation System

System Time: 12:08 Mon, 01 Jan 2008

Module Configuration

TCP/IP Configuration

Host Name : WSM

Port : 80

MAC Address : 00:04:A3:12:25:74

IP Address : 131.2.41.42

Gateway : 131.2.1.1

Subnet Mask : 255.255.0.0

Primary DNS : 131.2.10.2

Secondary DNS : 0.0.0.0

Save Config

Key in the Host Name

Tick to enable DHCP. Un-tick to disable DHCP and enter the IP address, Gateway, Subnet mask, primary and secondary DNS

Click 'Save Config' to save all the entered information.

- Redirect to reboot page after 'Save' button is click

2.2.3.1 When Enable DHCP

TCP/IP Configuration		
Host Name	WSM	E.g: WSM, John, Tan (** No Spacing)
Port	80	E.g: 80
<input checked="" type="checkbox"/> Enable DHCP		
MAC Address	00:04:A3:12:25:74	
IP Address	131.2.41.42	E.g: 131.2.41.30
Gateway	131.2.1.1	E.g: 131.2.1.1
Subnet Mask	255.255.0.0	E.g: 255.255.0.0
Primary DNS	131.2.10.2	E.g: 131.2.10.2
Secondary DNS	0.0.0.0	E.g: 0.0.0.0
<input type="button" value="Save Config"/>		

Name that is assigned to a device connected to network. Can only be use when direct connect and LAN. If the host name is changed, the user need to [http:// 'new host name'](http://new host name) to access the page.

Eg: Hostname: avantis,
So, <http://avantis>

If DHCP is enabled, Mac Address, IP Address, Gateway, Subnet Mask, Primary DNS, Secondary DNS are disabled. By this the IP address is assigned automatically.

2.2.3.2 When Disable DHCP

TCP/IP Configuration		
Host Name	WSM	E.g: WSM, John, Tan (** No Spacing)
Port	80	E.g: 80
<input type="checkbox"/> Enable DHCP		
MAC Address	00:04:A3:12:25:74	
IP Address	131.2.41.54	E.g: 131.2.41.30
Gateway	131.2.1.1	E.g: 131.2.1.1
Subnet Mask	255.255.0.0	E.g: 255.255.0.0
Primary DNS	131.2.10.2	E.g: 131.2.10.2
Secondary DNS	0.0.0.0	E.g: 0.0.0.0
<input type="button" value="Save Config"/>		

Name that is assigned to a device connected to network. Can only be use when direct connect and LAN. If the host name is changed, the user need to [http:// 'new host name'](http://new host name) to access the page.

Eg: Hostname:avantis,
<http://avantis>

MAC Address

Hardware's Address. Always disable.

IP Address

The users able to assigned the IP address for the devices.

Gateway and Subnet Mask

Local Area Connection Status

General Support

Connection status:

Address Type: Manually Configured

IP Address: 131.2.40.289

Subnet Mask: 255.255.0.0

Default Gateway: 131.2.1.1

Windows did not detect problems with this connection. If you cannot connect, click Repair.

2.3 Miscellaneous Setting

Avantis™ Security and Home Automation System

System Time
12:08
Mon, 01 Jan 2008

Miscellaneous
Last State:

System Status
System Status & Control
System Setting
Module Configuration
Miscellaneous
Trouble
Timer
Installer Setting
Home Communication
Zone Setting
Event
Zone Description
I/O Description
Extra

Current Status of Phone Line Loss Detection
Phone Line Loss Detection
Disabled
Enable

Click To Enable / Disable Phone Line Loss Detection.

Current Status of Installer Setting
Installer Setting
Enabled
Disable

Click To Enable / Disable Installer Setting.

Current Status of 15 Minutes Auto Logout
15 Minutes Auto Logout
Enabled
Disable

Click To Enable / Disable 15 Minutes Auto Logout

Site & Account Information
Site :
User ID :Master
Authority :Master
Level :
Logout
Legend
Armed Type
Auto Arm
Disarm
Day Arm
Night Arm
Force Arm
Away Arm
Zone Status
Close
Close + Bypass
Open
Open + Bypass
Alarm
I/O Status
ON
OFF

© 2010 O.Y.L. TECHNOLOGY

*Note: Toggle Method is use in this page. If current status is 'Disabled', the user can only enable the setting and vice versa.

2.4 System Trouble

Avantis™ Security and Home Automation System

System Time
12:34
Mon, 01 Jan 2008

Trouble
Last State:

System Status
System Status & Control
System Setting
Module Configuration
Miscellaneous
Trouble
Timer
Installer Setting
Home Communication
Zone Setting
Event
Zone Description
I/O Description
Extra

Trouble View
Bell Loss
DC Loss

Color of the 'Trouble' will become red if system trouble is detected.

Display the system trouble like AC Loss, DC loss, Bell/Strobe/Siren loss, Short circuit, Tamper and External communication failure

Site & Account Information
Site :oylt
User ID :Master
Authority :Master
Level :
Logout
Legend
Armed Type
Auto Arm
Disarm
Day Arm
Night Arm
Force Arm
Away Arm
Zone Status
Close
Close + Bypass
Open
Open + Bypass
Alarm
I/O Status
ON
OFF

© 2010 O.Y.L. TECHNOLOGY

2.5 To Edit Timer

2.5.1 Arm Timer

Avantis™ Security and Home Automation System

System Time: 12:42 Mon, 01 Jan 2008

Timer Setting

Last State:

Arm Timer Setting

Timer	Type	Setting	Partition
1	Daily	Year: 01, Month: 01, Date: 01, Hour: 11, Minute: 22	<input checked="" type="checkbox"/> Partition 1 <input checked="" type="checkbox"/> Partition 2 <input checked="" type="checkbox"/> Partition 3 <input checked="" type="checkbox"/> Partition 4
2	Schedule	Year: 18, Month: 03, Date: 19, Hour: 00, Minute: 18	<input checked="" type="checkbox"/> Partition 1 <input checked="" type="checkbox"/> Partition 2 <input checked="" type="checkbox"/> Partition 3 <input checked="" type="checkbox"/> Partition 4

Save

Callouts:

- Select the Timer Type:
 - Not In Use/Delete
 - Daily
 - Schedule
- Select the Timer Setting:
 - Year (01-99)
 - Month (01-12)
 - Date (01-31)
 - Hour (00-23)
 - Minute (00-59)
- Select the partition to apply this
- Click 'Save' to save the setting

Site & Account Information: Site: :oylt, User ID: :Master, Authority: :Master, Level: :Master, Logout

Legend: Armed Type (Auto Arm, Disarm, Day Arm, Night Arm, Force Arm, Away Arm), Zone Status (Close, Close + Bypass, Open, Open + Bypass, Alarm), I/O Status (ON, OFF)

© 2010 O.Y.L. TECHNOLOGY

- Redirect to success page after 'Save' button is click and will redirect back when it is successfully saved.

2.5.2 Disarm Timer

Avantis™ Security and Home Automation System

System Time: 13:09 Mon, 01 Jan 2008

Disarm Timer Setting

Timer	Type	Setting	Partition
1	Schedule	Year: 10, Month: 04, Date: 07, Hour: 11, Minute: 22	<input checked="" type="checkbox"/> Partition 1 <input checked="" type="checkbox"/> Partition 2 <input checked="" type="checkbox"/> Partition 3 <input checked="" type="checkbox"/> Partition 4
	Schedule	Year: 12, Month: 12, Date: 12, Hour: 12, Minute: 12	<input checked="" type="checkbox"/> Partition 1 <input checked="" type="checkbox"/> Partition 2 <input checked="" type="checkbox"/> Partition 3 <input checked="" type="checkbox"/> Partition 4
	Schedule	Year: 11, Month: 11	<input checked="" type="checkbox"/> Partition 1

Save

Callouts:

- Select the Timer Type:
 - Not In Use/Delete
 - Daily
 - Schedule
- Select the Timer Setting:
 - Year (01-99)
 - Month (01-12)
 - Date (01-31)
 - Hour (00-23)
 - Minute (00-59)
- Select the partition to apply this
- Click 'Save' to save the setting

Site & Account Information: Site: :oylt, User ID: :Master, Authority: :Master, Level: :Master, Logout

Legend: Armed Type (Auto Arm, Disarm, Day Arm, Night Arm, Force Arm, Away Arm), Zone Status (Close, Close + Bypass, Open, Open + Bypass, Alarm), I/O Status (ON, OFF)

© 2010 O.Y.L. TECHNOLOGY

- Redirect to success page after 'Save' button is click and will redirect back when it is successfully saved.

2.5.3 IO ON Timer

Avantis™ Security and Home Automation System

System Time: 13:10 Mon, 01 Jan 2008

System Status: System Status & Control, System Setting, Module Configuration, Miscellaneous, Trouble, Timer, Installer Setting, Home, Communication, Zone Setting, Event, Zone Description, I/O Description, Extra

Timer Setting

Last State:

Arm Timer, Disarm Timer, IO On Timer, IO Off Timer, Real Time Clock

IO On Timer Setting

Timer: 1, Type: Schedule

Setting: Year 01, Month 01, Date 01, Hour 00, Minute 00

IO: 1, 2, 3, 4, 5, 6, 7, 8, 9, 10, 11, 12, 13, 14, 15, 16, 17, 18, 19, 20, 21, 22, 23, 24, 25, 26, 27, 28, 29, 30, 31, 32

Save

Site & Account Information: Site: coyit, User ID: Master, Authority: Master, Level: Master, Logout

Legend: Armed Type (Auto Arm, Day Arm, Force Arm, Disarm, Night Arm, Away Arm), Zone Status (Close, Open, Alarm, Close + Bypass, Open + Bypass), I/O Status (ON, OFF)

© 2010 O.Y.L. TECHNOLOGY

Select the Timer Type:
- Not In Use/Delete
- Daily
- Schedule

Select the Timer Setting:
- Year (01-99)
- Month (01-12)
- Date (01-31)
- Hour (00-23)
- Minute (00-59)

Select the IO to apply this setting.

Click 'Save' to save the setting

- Redirect to success page after 'Save' button is click and will redirect back when it is successfully saved.

2.5.4 IO OFF Timer

Avantis™ Security and Home Automation System

System Time: 13:12 Mon, 01 Jan 2008

System Status: System Status & Control, System Setting, Module Configuration, Miscellaneous, Trouble, Timer, Installer Setting, Home, Communication, Zone Setting, Event, Zone Description, I/O Description, Extra

Timer Setting

Last State:

Arm Timer, Disarm Timer, IO On Timer, IO Off Timer, Real Time Clock

IO Off Timer Setting

Timer: 1, Type: Daily

Setting: Year 01, Month 01, Date 01, Hour 10, Minute 10

IO: 1, 2, 3, 4, 5, 6, 7, 8, 9, 10, 11, 12, 13, 14, 15, 16, 17, 18, 19, 20, 21, 22, 23, 24, 25, 26, 27, 28, 29, 30, 31, 32

Save

Site & Account Information: Site: coyit, User ID: Master, Authority: Master, Level: Master, Logout

Legend: Armed Type (Auto Arm, Day Arm, Force Arm, Disarm, Night Arm, Away Arm), Zone Status (Close, Open, Alarm, Close + Bypass, Open + Bypass), I/O Status (ON, OFF)

© 2010 O.Y.L. TECHNOLOGY

Select the Timer Type:
- Not In Use/Delete
- Daily
- Schedule

Select the Timer Setting:
- Year (01-99)
- Month (01-12)
- Date (01-31)
- Hour (00-23)
- Minute (00-59)

Select the IO to apply this setting.

Click 'Save' to save the setting

- Redirect to success page after 'Save' button is click and will redirect back when it is successfully saved.

2.5.5 Real Time Clock

Avantis™ Security and Home Automation System

System Time
12:10
Mon, 01 Jan 2008

System Status
System Status & Control
System Setting
Module Configuration
Miscellaneous
Trouble
Timer
Installer Setting
Home
Communication
Zone Setting
Event
Zone Description
I/O Description
Extra

Timer Setting
Last State:

RTC Setting
Year: 08, Month: 01, Date: 01, Hour: 12, Minute: 10, Day: Monday
Save
Get PC Time

Site & Account Information
Site: :oylt
User ID: :Master
Authority Level: :Master
Logout
Legend

Armed Type
Auto Arm, Disarm, Day Arm, Night Arm, Force Arm, Away Arm
Zone Status
Close, Open, Alarm, Close + Bypass, Open + Bypass
I/O Status
ON, OFF

Select the Timer Setting:
- Year (01-99)
- Month (01-12)
- Date (01-31)
- Hour (00-23)
- Minute (00-59)
- Day

Synchronize the system time with the PC

Click 'Save' to save the setting

© 2010 O.Y.L. TECHNOLOGY

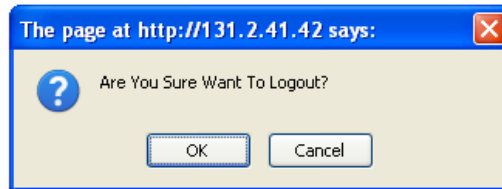
- Redirect to success page after 'Save' button is click and will redirect back when it is successfully saved.

CHAPTER 3: LOGOUT FROM WEB SERVER SYSTEM

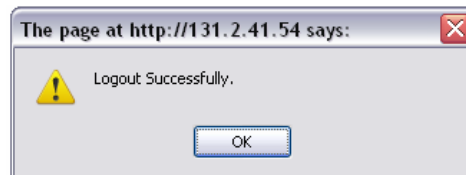
3.0 Logout from the System

3.1 Manual Logout

- Click on the 'Logout' and message box is prompt out

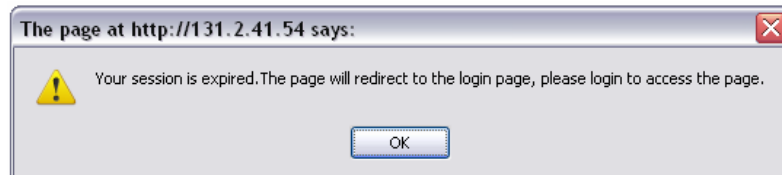


- Click on the 'OK' to confirm and the Logout message box is prompt out



3.2 Auto Logout

- For the safety purpose, the webpage will auto logout if no action within 15 minutes and message box is prompt out.



- However, if user would like to continue login for more the 15 minutes, user can disable the auto logout feature (refer to the Miscellaneous setting at page 9) and it must be logout manually by clicking the 'Logout' link.