

WITH MECHANICAL SEAL
AND SEALLESS



DRUM PUMPS STAINLESS STEEL

IF NO CONTAMINATION AND PRODUCT
CARRYOVER IS ALLOWED



FOOD



BEVERAGE



PHARMACEUTICAL



COSMETICS

Drum pumps stainless steel with mechanical seal (MS) and sealless (SL)

DRUM PUMPS STAINLESS STEEL

IF EASY CLEANING, DURABILITY AND EXPLOSION-PROOF ARE REQUIRED



PAINTS + COATINGS



ACIDS + BASES



SOLVENTS



SPECIAL APPLICATIONS, PLANT ENGINEERING



Our new pumps!

The quickest way to get to know us is to contact us directly. Save your precious time.

Contact us and we will do the rest for you.

Consulting service, product selection, project planning assistance and quote – fast and all free of charge.

Advantages

more ...

- practical
- variable
- complete
- hygienic
- solid
- robust
- imaginative
- fit for use
- modular
- individual

Sealed and sealless pumps types have grown closer to one another

The SD (Simple Disassembly) series is sealed with a mechanical seal (MS). In the SL series (sealless) there is an inner tube in the pump tube. The leakage unit depressurises the inner tube. The drive shaft is running within the inner tube. With no pressure difference between the inner tube and the outside ambient air no liquid can leave the pump, where the drive shaft comes out from the pump head. The pump is therefore always without leakage at the pump head.

Tel. +49 93 42 / 9 35 16-0
info@gruen-pumpen.de



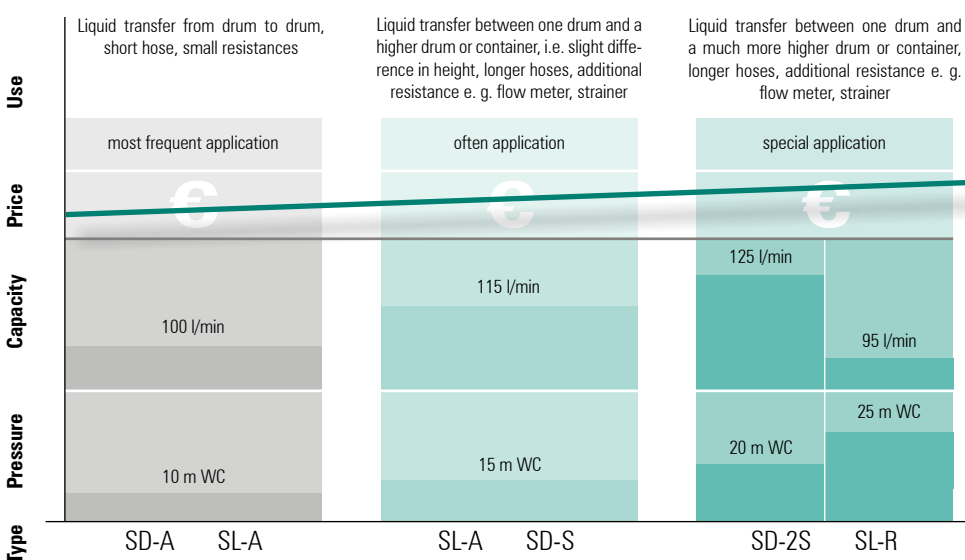
In this booklet you will learn a lot about grün-drum pumps. We are sure you will experience proof of our commitments and product statements when using our equipment.

Online you can learn interesting facts about 'grün-business-philosophy' in a three minute audio slideshow.

Worth seeing.

www.gruen-pumpen.de

The right pump for your application



drum pumps stainless steel with features for the top position

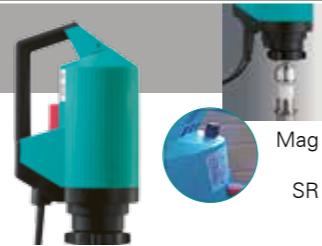


DRUM PUMPS STAINLESS STEEL

	SD-SS-	A	S	DL-SS-	A	R	S	MP-DL-SS-	A	R	S	Mag-SS-	A	R	
important for your application															
large capacity		X			X				X				X		
high pressure			X			X	X			X	X			X	
viscosity up to 1.500 mPas (pd500)			X				X				X				
hydraulic tuning			X			X	X			X					
many different liquids				X				X							
mixing function								X				hermetically sealed			
simple disassembly (SD)	X														
easy to clean	X			X				X							
explosion proof	AtEx			AtEx				AtEx				no			
continuous work with induction motor			X				X				X				
tube length	container size	ord.-no.			ord.-no.			ord.-no.			ord.-no.			ord.-no.	
700 mm	hobcock 30l	631-0001	631-0006		691-0001	696-0001	691-0006		691-0011	696-0011	691-0016		631-0021	636-0021	
1000 mm	drum up to 220 l	631-0002	631-0007		691-0002	696-0002	691-0007		691-0012	696-0012	691-0017		631-0022	636-0021	
1200 mm	IBC up to 1000 l	631-0003	631-0008		691-0003	696-0003	691-0008		691-0013	696-0013	691-0018		631-0023	636-0021	
> 1200 mm	special container	on demand	on demand		on demand	on demand	on demand		on demand	on demand	on demand		on demand	on demand	
electrical motors without explosion proof															
p310 optimised in price	preferred combination	X			X				X				X	X	
p400 the ideal drive	improved hydr. performance	X	X		X	X	X		X	X	X		X	X	
pd500 silent worker	smooth product treatment		X				X				X				
electrical motors with explosion proof															
EX700 for hazardous locations	safety by power	X	X		X	X	X		X	X	X				
pd500 Ex	smooth product treatment		X				X				X				
compressed air motor for all applications															
d600 for hazardous locations	the power drive	X	X		X	X	X		X	X	X				

Drive motors, select the best drive for every application

p310 optimised in price



p400 the ideal drive



Ex700 safety through power in hazardous locations



pd500 the silent marathon worker

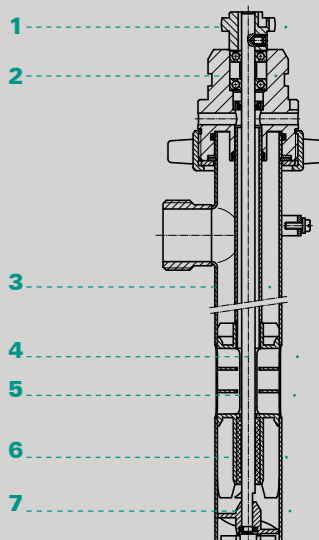


d600 the power drive for all locations



properties	short and occasional use, it likes light and thin liquids, internal cooling	big resources in power and durability, works quickly and saves time, internal cooling	big resources in power and durability, certified for the most liquids, external cooling (TEFC)	robust, without wear, powerful for viscous liquids, smooth product treatment with feed screw (S) 2800 rpm	for heavy duty applications, economical air consumption, certified for hazardous locations, variable speed, starting knob fixable, lightweight
options	low voltage release (LVR) recommended according to EU-directives, speed reducer (SR) varies pressure and capacity	low voltage release (LVR) recommended according to EU-directives, speed reducer (SR) varies pressure and capacity, IP54 with TEFC (MA)	without LVR available for special applications	single phase induction motor 230 V, three phase 230/400 V, explosion proof 3- phase 230/400 V, overload protection switch	
data					
power (W)	520	850	700	370 und 550	600
voltage (V)	230 120	230 120	230	230 400	compressed air 3-7 (bar)
protection	IP24	IP24 / IP54 IP24	IP54	IP54	air consumption 10 (l/s)
LVR*	optional	optional	EU-directive	optional	
SR**	optional	optional	-	with frequency inverter (FI)	standard
weight (kg)	3,5	4	6	5 5	weight (kg) 2
	type of impeller s. p. 4/5	Förderelement s.S. 4/5	type of impeller s. p. 4/5	type of impeller s. p. 4/5	type of impeller s. p. 4/5
max. spec. gravity (kg/l)	A 1,4	A / R / S 2 / 1,8 / 1,5	A / R / S 1,8 / 1,6 / 1,4	S: 2 S: 2,5	A / R / S 2 / 2 / 2
max. viscosity (mPas)	250	A / R / S 800 / 600 / 500	600 / 500 / 400	S: 1500 S: 1800	A / R / S 800 / 800 / 800

1. coupling PA
2. pump head SS
3. pump tube SS
4. Drive shaft SS
5. inner tube SS
6. slide bearing Carbon
7. Impeller ETFE

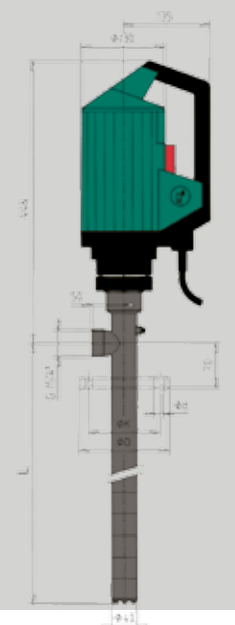
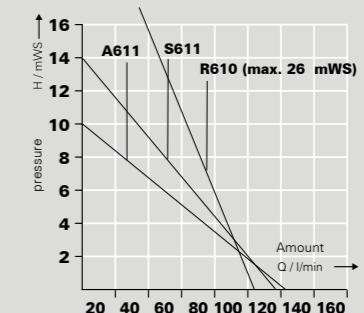
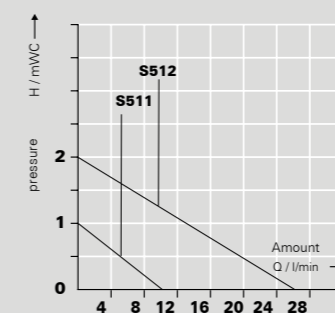
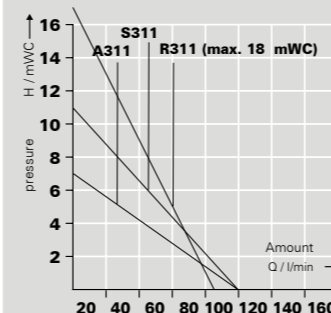
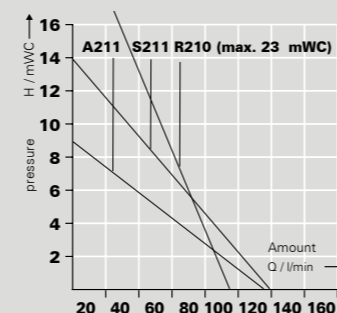
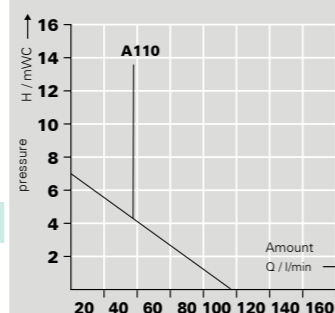


	ord.-no		ord.-no		ord.-no	ord.-no	
with LVR*	500-0016	500-0028	500-0023	500-0025	510-0010	pd500-1-0,37-230	500-0042
with SR** and LVR	500-0074	500-0060	500-0069	500-0066		pd500-3-0,37 230/400	500-0039
without LVR	500-0017	500-0029	500-0024	500-0026	510-0012	pd500-FU-0,55 kW	500-0043
without LVR with SR	500-0054	500-0057	500-0056	500-0063		pd500 Ex-0,37 230/400	510-0009
magnetic clutch , LVR	500-0030	500-0032	500-0034	500-0036		AtEx	
magnetic clutch , LVR, SR	500-0061	500-0062	500-0067	500-0068			
TEFC (MA) IP54			500-0072				

characteristics

* low voltage release
** speed reducer

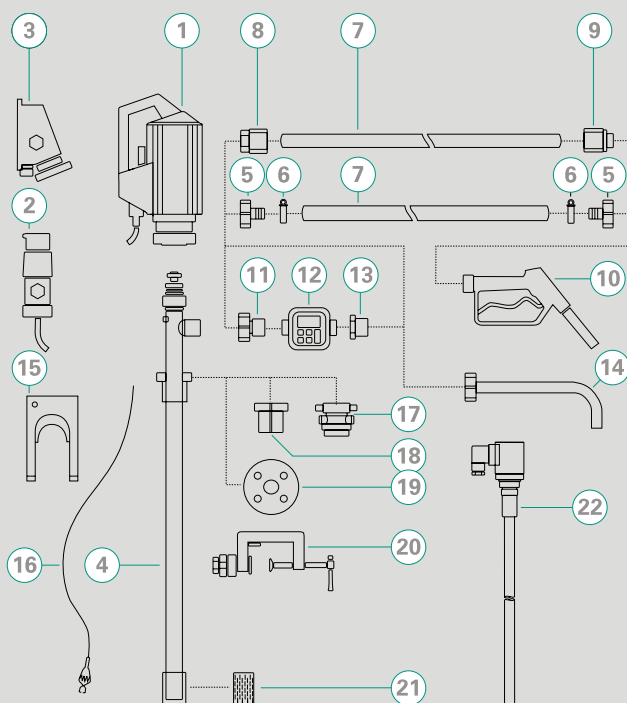
recommended types



Other pumps in separate catalogue.



ACCESSORIES



- 1 Drive motor
- 2 Explosion-proof plug
- 3 Explosion-proof socket
- 4 Pump tube
- 5 Hose connector
- 6 Hose clamps
- 7 Hose
- 8 Hose fittings
- 9 Hose fittings
- 10 Nozzle
- 11 Flow meter connection
- 12 Flow meter
- 13 Reducing piece
- 14 Discharge spout
- 15 Wall bracket
- 16 Equipotential bonding cable
- 17 Emission proof drum adapter
- 18 Drum adapter
- 19 Installation flange
- 20 Clamping device
- 21 Foot strainer
- 22 Level switch

Distributor:

grün-pumpen gmbh
Otto-Schott Str. 19
D-97877 Wertheim
Phone +49 93 42 9 35 16-0
Fax +49 93 42 9 35 16-29
info@gruen-pumpen.de
www.gruen-pumpen.de

Handelsregister:
Reg. Gericht Mannheim
HRB 570326
Sitz der Gesellschaft:
Wertheim
Geschäftsführer:
Ralph Dostmann, Dr. Thomas Sigel
USt.IdNr. DE 160765854

g[®]
grün-pumpen
 take out, what's in.