

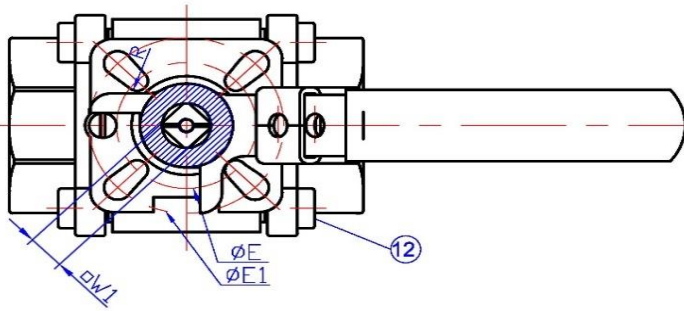


SPECIFICATION:

- 3-piece-body reduced bore
- Working pressure up to 2000psi W.O.G
- Investment casting body A351 Gr-CF8M
- Blow-out-proof stem
- Direct mounting dimension according to ISO5211 DIN3337
- Working temperature up to 180° C

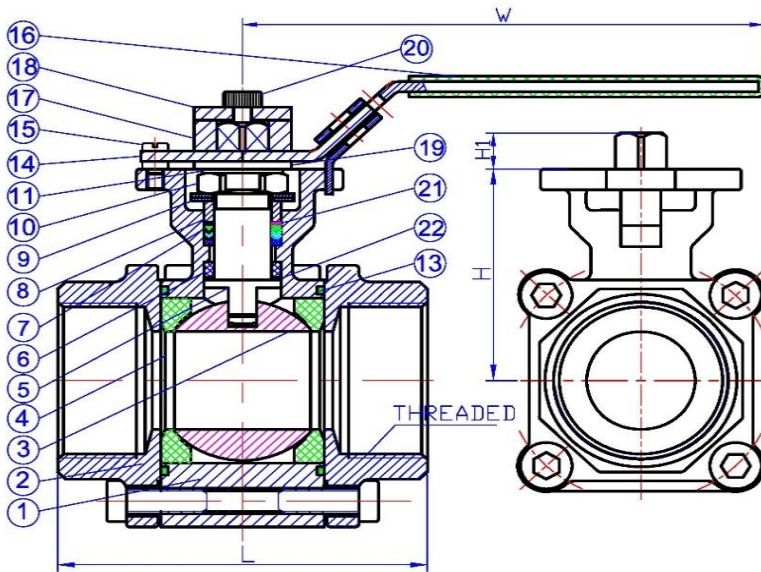
PRESSURE TEST

BODY	SEAT	
by water	by water	by air
210 kg/cm ²	80 kg/cm ²	6 kg/cm ²



MATERIAL LIST

NO.	PART NAME	MATERIAL
1	Body	CF8M
2	Cap	CF8M
3	Ball	CF8M
4	Seat	R-PTFE
5	Stem	SUS316
6	Thrust washer	PTFE
7	Stem Packing	Graphite
8	Gland	SUS304
9	Handle washer	SUS304
10	Stem nut	SUS304
11	Stop washer	SUS304
12	Bolt	SUS304
13	Gasket	Graphite
14	Handle	SUS304
15	Stop pin	SUS304
16	Joint nut	PLASTIC
17-19	Washer	SUS304
20	Bolt	SUS304
21	Bushing	50% SS powder /
22	Thrust washer	50% PTFE



DIMENSIONS

SIZE		L	H	W	H1	W1	ISO5211	Ø E	ACTUATOR		
G	d								AD	AS	ATM
1/2	12.7	71.6	41	123	9	9x9	F03-F04	36-42	AD50	AS50	ATM40
3/4	15	71.6	41	123	9	9x9	F03-F04	36-42	AD50	AS50	ATM40
1	20	96.6	44	123	9	9x9	F03-F04	36-42	AD50	AS65	ATM40
1-1/4	25	109	59	153	11	11x11	F04-F05	42-50	AD50	AS65	ATM80
1-1/2	31.8	117	63	153	11	11x11	F04-F05	42-50	AD65	AS65	ATM80
2	37.1	129	82	183	14	14x14	F05-F07	50-70	AD65	AS65	ATM80
2-1/2	50.8	142	90	183	14	14x14	F05-F07	50-70	AD80	AS80	ATM160
3	65	174	118.5	246	17	17x17	F07-F10	70-102	AD80	AS80	ATM240
4	76	193	129	246	17	17x17	F07-F10	70-102	AD100	AS100	ATM240

The specification and dimensions are subject to change without prior notice!