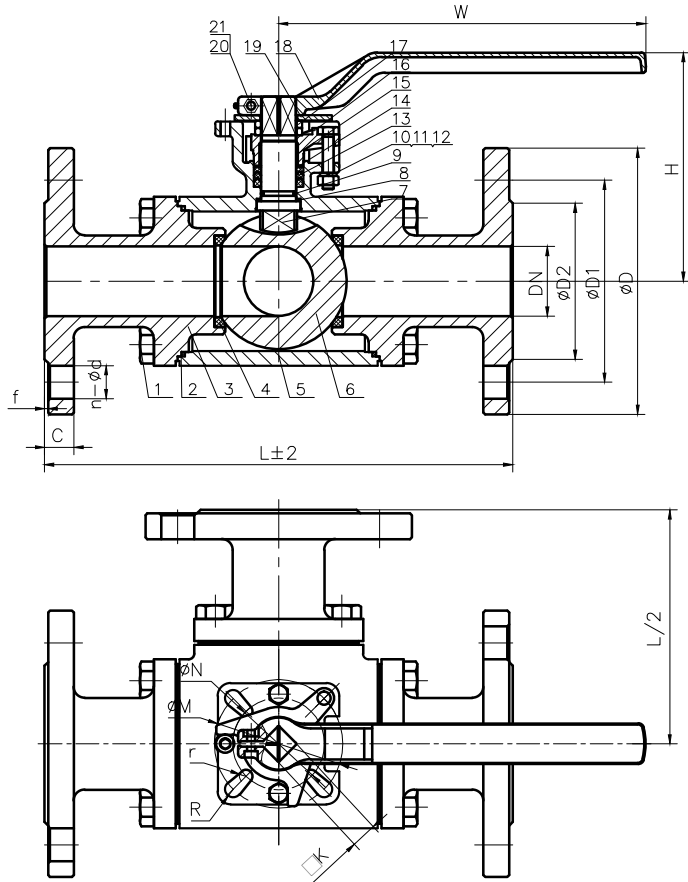


Q44(5)F-150LB-00

# AT347F - SS304-BODY ANSI150

DN	L	D	D1	D2	C	f	n-φd	H	W	K	M	N	R	r
DN25	215	110	79.4	50.8	12	2	4-φ16	104	150	11	50	42	3.5	3
DN40	255	125	98.4	73	15	2	4-φ16	125	200	14	70	50	4.5	3.5
DN50	280	150	120.7	92.1	16	2	4-φ19	154	270	17	70	-	4.5	-
DN65	310	180	139.7	104.8	18	2	4-φ19	162	270	17	70	-	4.5	-



21	GB/T 6170-2000	NUT	1	A2-70/304	
20	GB/T 70.1-2000	HEX SOCKET BOLT	1	A2-70/304	
19	Q45F-150LB-14	STOPPER	1	SS304	
18	Q45F-150LB-13	HANDLE	1	STAINLESS STEEL	
17	Q45F-150LB-12	WASHER	1	PVC	
16	Q45F-150LB-11	GLAND	1	CF8	
15	Q45F-150LB-10	BUSHING	1	PTFE	
14	Q45F-150LB-09	GASKET	1	304	
13	Q45F-150LB-08	PACKING		PTFE	
12	GB/T 6170-2000	NUT	2	A2-70/304	
11	GB/T 93-1987	SPRING WASHER	2	304	
10	GB/T 5783-2000	BOLT	2	A2-70/304	
9	GB/T 3452.1-2005	O-RING	1	NBR/VITON	
8	Q45F-150LB-07	STEM WASHER	1	PTFE	
7	Q45F-150LB-06	STEM	1	A276 304	
6	Q45F-150LB-05	BALL	1	SS304	
5	Q45F-150LB-04	BODY	1	A351 CF8	
4	Q45F-150LB-03	SEAT	4	PTFE	
3	Q45F-150LB-02	BONNET	3	A351 CF8	
2	Q45F-150LB-01	GASKET	3	PTFE	
1	GB/T 5783-2000	BOLT	-	A2-70/304	

NO.	DRAWING NO.	DESCRIPTION	Q'TY	MATERIAL	REMARKS
GENERAL DRAWING			<b>AUTOMA</b>		
MARK BEFORE MODIFIED AFTER MODIFIED DATE					
DRA.	APP.	SCALE	3-WAY BALL VALVE		
CHK.	DATE	Q44(5)F-150LB-00			

NOTE:

- 1.Design and Manufacture for valve according to ANSI B16.34-2009.
- 2.Face-to-face dimensions for valve according to ASME B16.10-2009.
- 3.End flange dimensions for valve according to ASME B16.5-2009.
- 4.Inspection and Test for valve according to API 598-2009.

Nominal pressure			150LB				
Test pressure	Shell test	3	MPa	test medium	water	Test temperature	normal temperature
	seal test	2.2			air		
	Gas seal test	0.6					
Applicable medium		water,oil,gas					
Applicable temperature		-29-150°C					